

同济大学建筑与城市规划学院
国际联合设计教学作品集

INTERNATIONAL
DESIGN
PROGRAM
CAUP TONGJI
UNIVERSITY

同济大学建筑与城市规划学院 主编



同济大学 出版社
TONGJI UNIVERSITY PRESS

同济大学建筑与城市规划学院
国际联合设计教学作品集

INTERNATIONAL DESIGN PROGRAM AT TONGJI UNIVERSITY

同济大学建筑与城市规划学院 主编



同济大学出版社
TONGJI UNIVERSITY PRESS

图书在版编目 (CIP) 数据

国际联合设计教学作品集 = International Design
Program CAUP, Tongji University : 汉英对照 / 同济大学
建筑与城市规划学院主编. -- 上海: 同济大学出版社, 2012.5
ISBN 978-7-5608-4867-9

I. ①国… II. ①同… III. ①建筑设计 - 作品集 - 世界 - 现代
IV. ① TU206

中国版本图书馆 CIP 数据核字 (2012) 第 082585 号

同济大学建筑与城市规划学院 国际联合设计教学作品集
International Design Program Caup, Tongji University

同济大学建筑与城市规划学院 主编
责任编辑 荆华 责任校对 由爱华 装帧设计 王晓君

出版发行 同济大学出版社
(上海四平路 1239 号 邮编: 200092 电话: 021-65985622)

经 销 全国各地新华书店
印 刷 上海盛隆印务有限公司
开 本 787mm×1 092mm 1/16
印 张 14.75
字 数 368 000
版 次 2012 年 5 月第 1 版 2012 年 5 月第 1 次印刷
书 号 ISBN 978-7-5608-4867-9
定 价 120.00 元

本书若有质量问题, 请向本社发行部调换

编委会 / Editorial Committee:

(按照姓氏笔画排序 / In alphabetical order)

王伯伟 卢济威 伍江 刘滨谊 李振宇 李德华 吴长福 吴志强 陈秉钊 周俭 郑时龄 赵民 赵秀恒
莫天伟 钱锋 唐子来 陶松龄 黄一如 常青 彭震伟 蔡永洁 戴复东

Wang Bowei, Lu Jiwei, Wu Jiang, Liu Binyi, Li Zhenyu, Li Dehua, Wu Changfu, Wu Zhiqiang,
Chen Bingzhao, Zhou Jian, Zheng Shiling, Zhao Min, Zhao Xiuheng, Mo Tianwei, Qian Feng,
Tang Zilai, Tao Songling, Huang Yiru, Chang Qing, Peng Zhenwei, Cai Yongjie, Dai Fudong

执行编委 / Executive Editor:

黄一如 王一 李翔宁 张建龙 章明 孙施文 杨贵庆 周向频 王云才

Huang Yiru, Wang Yi, Li Xiangning, Zhang Jianlong, Zhang Ming, Sun Shiwen, Yang Guiqing,
Zhou Xiangpin, Wang Yuncai

参编 / Assistant Editor:

王红军 朱玮 董楠楠 王晓君 徐蜀辰 吴诗静 阳旭

Wang Hongjun, Zhu Wei, Dong Nannan, Wang Xiaojun, Xu Shuchen, Wu Shijing, Yang Xu

前言 / Preface

国际联合设计工作室——培育创造性和前瞻性的开放性实验室

The International Workshop - A Laboratory to Cultivate Creativity and Foresightedness

郑时龄 教授

Prof. Dr. Zheng Shiling

建筑师的创造性是建筑的生命，创造性需要培育，需要探索。由学术机构和大学举办的国际联合设计工作室就是培育创造性和前瞻性，推动思想交流，培养团队精神，探索先锋性与实验性的研究室和实验室。这样一种开放性实验室为参加者，尤其是为学生提供在理想状态下探索现实问题，充分发挥他们的想象力，更广泛地探讨问题，寻找设计理念，寻找另一种现实可能性等超越偶然性的现实制约的机会。联合设计工作室已经成为建筑界，尤其是建筑院校的重要教学、研究和实验基地，是开放性的建筑设计教学实践。联合设计工作室有时候会与专题研讨会、主题论坛、讨论会等相结合，使工作室具有更高的学术层次。

联合设计工作室的探索具有多文化交融和多学科交叉以及广泛参与的特点。2000年9月，在第七届威尼斯建筑双年展期间，主持了由威尼斯双年展、荷兰贝尔拉格学院、密斯·凡·德·罗基金会、威尼斯建筑大学等共同组织的主题为《城市中新的工作与生活条件》的为期一周的论坛和工作室，结合当年威尼斯建筑双年展的主题“少点美学，多些伦理”，将来自荷兰、意大利、法国和西班牙的政府官员、规划师、建筑师、建筑教师、学生和市民聚集在一起，共同勾画城市的未来，探讨新的城市类型学和组织方式，寻求建筑师在城市发展过程中的作用。

在任务明确，而且准备充分的前提下，采用联合设计工作室的方法往往可以获得比较深入，而又较理想的成果。2003年7月，为了城市的战略性跨易北河发展，同时也为了准备2006年的汉堡国际园艺展以及2013年国际建筑展，适应城市滨水地区的后工业化更新和可持续发展，以“跨越易北河”（Sprung über die Elbe）作为规划设计的主题，汉堡市邀请了来自德国、荷兰、西班牙、法国、意大利、英国和中国的建筑师、规划师、景观设计师、政府官员、学生、市民代表等约140人，混合编组，每个组都有建筑师、规划师、景观建筑师、学生和市民代表参加。将整个项目划分为五个地块，每个地块有至少两个组参加规划。用一个星期的时间，集中

在易北河南部的港口仓库区进行规划工作，并在工作的同时，举办了讲座、分析和讨论。

在工作室中，草图和中间过程的评图以及最终方案的评图和分析是建筑教育的核心内容，是培养学生的分析能力、论证思维、设计技能和判断力的重要环节，使学生以批评意识反观自己的设计，同时也可以学习其他同学的设计立意。教师的点评和总结，对于学生具有重要的启示和指导作用。有时候，联合设计工作室也会对学生的作品进行评奖，评选优秀的设计，更能培养学生迎接挑战的热情，激发创意。

同济大学建筑与城市规划学院的联合设计工作室自20世纪90年代开始，是国内最早的联合设计工作室之一，其专业遍及建筑学、城市规划、城市设计、景观设计等，探讨未来城市、城市交通、城市历史地区的更新、新城规划、历史建筑保护、生态设计、城市景观环境等各种论题。其合作的建筑院校包括澳大利亚、奥地利、加拿大、德国、法国、荷兰、希腊、以色列、意大利、日本、韩国、科威特、挪威、波兰、西班牙、瑞士、突尼斯、阿联酋、英国、美国等国家的大学，以及国内的大学建筑院校，探索共同关注的现实问题。联合工作室在上海或联合主办的国外学校举办，帮助学生认识并理解国际文化，扩展全球视野，思考未来，成为一种开放性的办学方式。

2000年10月，由欧洲大学、上海市城市规划管理局和同济大学共同组织的为期一个月的夏日工作室在上海举办。这次工作室的主题是2010年上海世博会的园区规划，其成果促成了世博会选址的改变，从原来占用绿地改为利用黄浦江两岸的工业地带，表明了一种城市可持续发展的变化。世博会缝合了黄浦江两岸的城市功能，将受污染并布满工厂、仓库、码头的工业地带转化为公共开放空间。

本书展示的是近年来国际联合设计工作室的一些作品，既是国际联合设计工作室的实验成果，也是建筑思想的集成；既是一种历史的回顾，也是建筑思想探索的启示。

The creativity of an architect is the life of architecture, which needs to be cultivated, investigated. The international workshops organized by academic institutions and universities is such a kind of studio and laboratory for cultivating the creativity and foresightedness, fostering the communications of thinking, training the team work, investigating the avant-gardism and architectural experiment. This open laboratory has established an opportunity for the students to investigate the real problems under an idealistic situation, to stimulate their imagine, to study the situation with a vast vision, to search the design idea, to find another reality in order to transcend the constraint of occasionality. The international workshop is becoming an important studio and laboratory for the domain of architectural design and theory, especially for the architecture school, it is an open studio and architecture education practice. Sometimes, the workshop is combined with seminar, forum and conference together, it will have higher academic level.

Usually, the investigation of international workshop is of the multi-cultural and trans-disciplinary character, with an extensive participation. In September 2000, during the 7th Biennale of Venice, there was a Forum & Workshop Venice 2000 co-organized by Berlage Institute, Fundació Mies van der Rohe ETSAB, La Biennale di Venezia and others, the theme was 'New Working and Living Conditions in Cities', which lasted for one week, with the theme of the Biennale, 'Less Aesthetics, More Ethics', government officials, urban planners, architects, teachers, student and citizens from Holland, Italy, France and Spain gathered together in the workshop, to draw the future blueprint, to investigate the new urban typology and structure, to find the role of architects in the course of urban development.

Under the condition of clear program and good preparation, the international workshop can achieve a more profound and idealistic result. In July 2003, for the strategic development of the trans-Elbe and the preparation of International Garden Show 2006 and the International Building Exhibition 2013, to meet the regeneration of post-industrialization and the sustainable development of the city, Hamburg City has invited government officials, urban planners, architects, landscape architects, student and citizens from Germany, Holland, Spain, France, Italy, U.K. and China for the program of 'Leap Across the Elbe', altogether more than 140 people has taken part in the event. They have been divided into mixed teams for five areas project, every area had two or more teams working on the master plan.

The workshop has been held in the warehouses area of the Elbe Port and sustained for a whole week with lectures, seminars and discussion.

In the workshop, the draft sketches and the mid-term jury, the final jury and analysis is the key issues for the studio, which is helpful to promote the students' ability for analysis and thinking argumentation, design skill and judgement. During the jury, students can learn from each other, and self-critique. The professors' and tutors' comments and evaluations will be of important instruction for the students. Sometimes, the workshop will select the outstanding designs and grant prizes to the students' projects, which will greatly promote the creativity and encourage the desire to meet challenges.

The international workshops of the College of Architecture and Urban Planning (CAUP) has a quite long history since early 1990s, the field has covered architecture, urban planning, urban design and landscape architecture etc. The future city, the urban traffic, the regeneration of historical areas, new city planning, the preservation of historical architecture, the ecological design, urban landscaping and others have been investigated in the workshops. The universities and architecture schools from Australia, Austria, Canada, Germany, France, Holland, Greece, Israel, Italy, Japan, Korea, Kuwait, Norway, Poland, Spain, Tunisia, Switzerland, UAE, U.K., USA and others with Chinese universities together for the investigation of mutual real problems. The workshop are held in Shanghai or abroad and become an open campus.

In October 2000, an international workshop for EXPO 2010 Shanghai was co-organized by European University, the Urban Planning and Administration Bureau of Shanghai, Tongji University, which achievement has promoted the selection of EXPO site on the waterfront of the Huangpu River, an industrial area for transformation from an original planned green area, it means an important sustainable urban development, to transform the polluted land full of factories, docklands, warehouses into public open space.

This atlas has shown some of the projects of the international workshops in recent years, which are the achievements of the workshops, and also the collection of design thinking, it is a trace of the history, but also the footprints for the investigation of architecture thinking.

目录

CONTENTS

- 4 前言：国际联合设计工作室——培育创造性和前瞻性的开放性实验室
Preface: The International Workshop - A Laboratory to Cultivate Creativity and Foresightedness
- 10 伊利诺伊大学 - 同济大学暑期学校 1988-2012
University of Illinois - Tongji University Summer School 1988-2012
- 14 同济 - 普林斯顿大学 2004: 苏州古城区二号街坊城市设计
Tongji - Princeton University 2004: Urban Design for the No.2 City Block of Old Town Suzhou
- 18 同济 - 巴黎美丽城国立高等建筑学校
Tongji - Ecole National Supérieur d'architecture Paris- Bellevill
- 20 同济 - 普林斯顿大学 2006: 苏州古城怡园历史文化保护区城市设计
Tongji - Princeton University 2006: Urban Design for Yi-Yuan Historical Preservation Area of Suzhou
- 24 同济 - 香港大学 - 耶鲁大学: 城市的历史与今天
Tongji - The University of Hong Kong - Yale University: Today and before of City
- 28 同济 - 加州大学伯克利分校: 绿色嘉兴——可持续发展建议书
Tongji - University of California, Berkley: Green Jiaxing - Recommendations for a Sustainable Future
- 32 同济 - 纽约理工学院: 中国 2010 年上海世博会中国馆
Tongji - New York Institute of Technology: China Pavilion of Shanghai World Expo 2010
- 38 同济 - 耶鲁大学 - 香港大学: 吴江路城市更新
Tongji - Yale University - The University of Hong Kong: WuJiang Road Urban Design
- 42 同济 - 法国夏约高等研究中心: 夏约建筑与城乡遗产保护联合设计
Tongji - Ecole de Chaillot of France: Chaillot Joint Workshop of Architecture and Urban-Rural Heritage Conservation
- 46 同济 - 南加州大学: 田子坊项目
Tongji - University of Southern California: Tianzifang Project
- 50 同济 - 联合国教科文组织:
景观和环境设计教席 (CUPEUM) 国际联合设计 · 2008 中国金泽 (上海青浦)
Tongji - UNESCO: The UNESCO Chair in Landscape and Environmental Design (CUPEUM) of WAT 2008 - Jinze, Qingpu, Shanghai
- 45 同济 - 九州大学: 可持续城市与建筑设计
Tongji - Kyushu University: Sustainable Urban and Architecture Design
- 51 同济 - 麻省理工学院: 上海多层高密度混合社区
Tongji - Massachusetts Institute of Technology: Toward a Hybrid Mid-Rise High-Density Community in Shanghai

- 55 同济 - 乔治亚理工: 上海陆家嘴金融区城市设计绩效评估及研究
Tongji - Georgia Institute of Technology: Evaluation and Research of Shanghai Lujiazui CBD's Urban Design
- 66 同济 - 法国夏约高等研究中心: 山西平遥梁村建筑遗产保护
Tongji - Ecole de Chaillot of France: Architecture Heritage Conservation of Liang Village, Pingyao, Shanxi
- 70 同济 - 麻省理工学院: 徐家汇地块
Tongji - Massachusetts Institute of Technology: Xujiahui Block
- 74 同济 - 耶鲁大学 - 香港大学: 四川北路城市设计
Tongji - Yale University - The University of Hong Kong: North Sichuan Road Urban Design
- 78 同济 - 巴黎美丽城国立高等建筑学校: 上海黄浦区外滩中心地区联合城市设计
Tongji - Ecole National Supérieur d'architecture Paris- Bellevill: Urban Design for Bund Central Blocks, Shanghai
- 82 同济 - 德国布伦瑞克工业大学 - 兰州理工大学: 中国城市愿景——上海复兴岛城市设计
Tongji - Technische Universität Braunschweig - Lanzhou University of Technology: Urban visions for China - Urban Design on Fuxing Island, Shanghai
- 86 同济 - 美国俄亥俄州立大学: 城市记忆——苏州河 M50 地块城市更新
Tongji - The Ohio State University USA: Urban Memory - Urban Redevelopment of Site M50 Along Suzhou Creek
- 90 同济 - 伦斯勒理工学院联合设计
Tongji - Rensselaer Polytechnic Institute Joint Design Program
- 96 同济 - 国际风景园林师联合会学生设计营: 与山水共荣——苏州石湖风景区景点设计
Tongji - EFLA: Landscape Design of an Island in Shihu (Stone-lake) Scenic Area, Suzhou
- 100 同济 - 伦斯勒理工学院: 未来的浮动
Tongji - Rensselaer Polytechnic Institute: Future Floating
- 104 同济 - 美国佐治亚理工学院: 宜居密度——虹桥综合交通枢纽地区开发
Tongji - Georgia TECH: Livable Density - Development around Hongqiao Integrated Transport Hub, Shanghai
- 110 同济 - 德国比勃拉赫大学: 斯图加特国际设计展示中心
Tongji - Biberach University: Exhibition Center for International Design, Stuttgart, Germany
- 114 同济 - 以色列特拉维夫大学 - 西班牙塞维利亚大学: 城市变革——来自上海提篮桥前犹太社区的声音
Tongji - Tel Aviv University of Israel - Universitat de Sevilla of Spain: Urban Change - Echoes from Tilanqiao, the Former Jewish Ghetto in Shanghai

- 118 同济 - 美国哈佛大学 - 清华大学: 后世博主题办公楼建筑设计竞赛
Tongji - Harvard university - Tsinghua University:
A Post-Expo Shanghai Office Building Design Concept Competition
- 124 同济 - 柏林工业大学 - 东京工业大学 - 东南大学: 城墙内外
Tongji - Technical University of Berlin - Tokyo Institute of Technology -
Southeast University: Inside and Outside the City Wall
- 128 同济 - 美国哥伦比亚大学: 知识城市
Tongji - GSAPP Columbia University: Knowledge City
- 134 同济 - 巴黎美丽城国立高等建筑学校: 上海火车西站地区联合城市设计
Tongji - Ecole National Supérieur d'architecture Paris- Bellevill: Urban Design of Shanghai West Station Area
- 138 同济 - 德国斯图加特大学等: 木构设计与建造营——极小居空间
Tongji - University of Stuttgart etc.: Construction Workshop - Minimum Living Space
- 142 同济 - 法国国立高等技术学院: 在上海的河岸边——黄浦江两岸开发调研及概念设计
Tongji - ENSAM: SHANGHAI LES RIVES - Huangpu River
- 146 同济 - 包豪斯魏玛大学 - 柏林技术大学 - 里尔大学 - 维也纳技术大学:
与山水共荣——苏州石湖风景区景点设计
Tongji - Bauhaus Weimar University - Technische Universität Berlin - University of Lille - TU Vienna:
Landscape Design of an Island in Shihu (Stone-lake) Scenic Area, Suzhou
- 154 同济 - 新加坡国立大学等: 亚洲垂直城市
Tongji - National University of Singapore etc.: Vertical Cities in Asia
- 158 同济 - 美国宾夕法尼亚大学: 上海虹口区原工部局宰牲场历史地段更新设计
Tongji - School of Design University of Pennsylvania: Renovation of the Historical Area around Original Municipal
Committee Slaughterhouse in Hongkou District, Shanghai
- 162 同济 - 法国凡尔赛建筑学院: 城市外围轨道交通站点地区的规划设计
Tongji - Institute of Architecture at Versailles: Planning of Rail Station Area in Urban Fringe
- 170 同济 - 美国华盛顿大学 - 新加坡国立大学联合城市设计:
可持续的城市: 2050 M²E³——都市形态、代谢与生态
Tongji - Washington University - National University of Singapore:
Sustainable Hyper Cities: 2050 M²E³ - The Morphology & Metabolism of Three Ecologies of Urbanism
- 174 同济 - 塞维利亚大学 2011: 给历史遗产一个机会
Tongji - Universidad de Sevilla 2011: Give Heritage a Chance

- 180 同济 - 南加州大学 - 华南理工大学: 数字云
Tongji - University of Southern California - South China University of Technology: Digital Cloud
- 184 同济 - 大阪大学: 上海外滩吴淞路西街区设计
Tongji - Osaka University: A Proposal for the Development of the West Block of Wusong Road, North Bund, Shanghai
- 192 同济 - 普林斯顿大学 2011: 灌溉未来城市——苏州新区狮子山 - 何山片区城市设计
Tongji - Princeton University 2011: Suzhou New District - Irrigating the Future City
- 196 同济 - 维也纳工业大学 - 东南大学 - 深圳大学: 上海地铁十号线四川北路站地区城市设计研究
Tongji - Vienna University of Technology - Southeast University - Shenzhen University: Urban Design for the North Sichuan Road Station District of Metro Line 10
- 200 同济 - 联合国教科文组织: 景观和环境设计教席国际联合设计 · 2011 加拿大蒙特利尔
Tongji - UNESCO: WAT_Montreal of the UNESCO Chair in Landscape and Environmental Design
- 204 同济 - 意大利帕维亚大学: 南外滩滨水区节点概念设计
Tongji - University of Pavia: Concept Plan & Key Nodes Design for South Bund Waterfront, Shanghai
- 206 同济 CAUP 国际暑期学校 2006: 文化 · 街区 · 城市更新
Tongji CAUP International Summer School 2006: Culture · Street · Urban Renew
- 210 同济 CAUP 国际暑期学校 2007: 创造美丽的城市景观——中国景观规划设计的正本清源
Tongji CAUP International Summer School 2007: Create the Beautiful Landscape to City - Recovery Chinese Landscape Architecture
- 214 同济 CAUP 国际暑期学校 2009: 荷巷桥历史村镇的再生
Tongji CAUP International Summer School 2009: Hope- History/ Origin/ Plebs/ Equity, Shanghai
- 218 同济 CAUP 国际暑期学校 2010: 传承与创新——2010 年上海世博会城市最佳实践区的“后世博”发展规划
Tongji CAUP International Summer School 2010: Heritage and Innovation - Post- EXPO Development Planning in Urban Best Practices Area of EXPO 2010, Shanghai
- 222 同济 CAUP 国际暑期学校 2011: 后世博时代的景观再生
Tongji CAUP International Summer School 2011: Landscape Regeneration for the Post-Expo Age of Shanghai
- 236 后记 / Epilogue

伊利诺伊大学 – 同济大学暑期学校 1988–2012

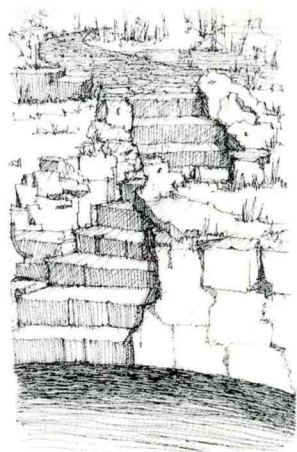
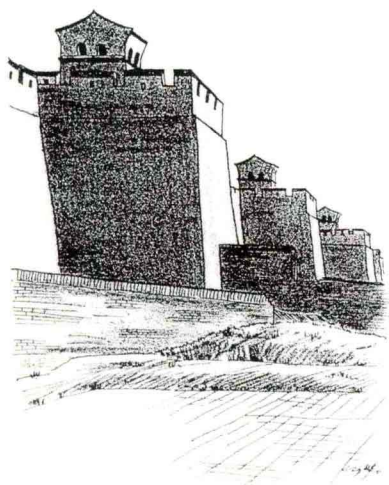
University of Illinois - Tongji University Summer School 1988-2012

詹姆斯·沃菲尔德
Prof. James P. Warfield

1987年，同济大学和伊利诺伊大学香槟分校双方的学术带头人共同构想了国际联合设计项目。在中国举办的第一期伊利诺伊大学/同济大学暑期联合设计，是由美国伊利诺伊大学建筑学教授詹姆斯·沃菲尔德（James P. Warfield），景观建筑学教授乔纳森·哈蒙德（Jonathan Hammond）与同济大学建筑与城市规划学院前任院长郑时龄教授共同组织与指导完成，共分为建筑学、景观学和城市规划与设计三个方向。这个项目的特色是通过在中国实地考察以及在同济大学的理论学习，在国际化多元设计主题下，强化对于城市建筑的跨文化学习。自1988年第一期暑期学校开展以来，在詹姆斯·沃菲尔德教授的协调下，并在超过12名伊利诺伊大学教师和近40名同济大学教师的共同努力下使这个项目持续至今。它不仅促进了中美两校教师与学生之间的学术交流和个人联系，还经历了许多重大国际性事件，如2003年在中国爆发的非典型性肺炎（SARS）。25年来，暑期学校不断发

展，大约每隔一年举办一期（1988、1991、1993、1997、2000、2002、2004、2006、2008、2010年）。伊利诺伊大学每期派出的学生团队人数从10到15人不等，以及随团的教师和管理人员。2012年的暑期学校仍然由沃菲尔德教授带队，作为庆祝伊利诺伊大学与同济大学25年成功合作的贺礼。

在25年的历史进程中，参加此项中国暑期学校的学生中涌现了一大批优秀的设计师，他们如今任职于SOM建筑设计事务所、诺曼·福斯特建筑事务所、WJE建筑公司和HOK建筑师事务所，为设计行业做出了重大贡献。参与这个项目的教师也取得了杰出的成就。郑时龄教授成为同济大学副校长，同时作为建筑与城市规划界的领袖人物，为上海建设21世纪现代化城市做出了重大贡献。他设计的第一座横跨黄浦江的大桥连接了上海浦东和浦西，促进了浦东现代建筑群迅速崛起，并成长为中国新的金融中心；他设计的上海南京路步行



街如今已成为世界上最繁忙的商业购物中心；他还被委任为2010上海世博会主题演绎总策划师。曾担任沃菲尔德教授助教的伍江教授，曾任上海城市规划管理局副局长，在建筑保护方面扮演了极为重要的角色，现任同济大学副校长。同济大学建筑与城市规划学院前任院长吴志强教授，现任同济大学副校长，他领导的国际设计团队赢得了2010上海世博会总体规划竞赛。

自该项目开展以来，沃菲尔德教授对中国各地的风土建筑进行了实地调查研究。美方学生回国后，他继续聘请同济的教师和学生作为在中国考察的翻译和向导。2003年，在上海东强艺术中心举办了题为“不变的梦想：中国的民间环境之人与建筑”的展览，他的研究成果最终呈现在中国公众面前。展览吸引了中国各地的新闻媒体，并在不久后到美国芝加哥I space展览。沃菲尔德教授撰写了《少有人走的

路》(Roads Less Traveled)一书，书中概述了他对世界各地的地方建筑的研究，书的中英文版也已在中国发行，由UN + Architecture出版社出版。2008年初，在日本建筑师隈研吾(Kengo Kuma)设计的上海Z58举办的展览开幕式上，该书的国际版首发。

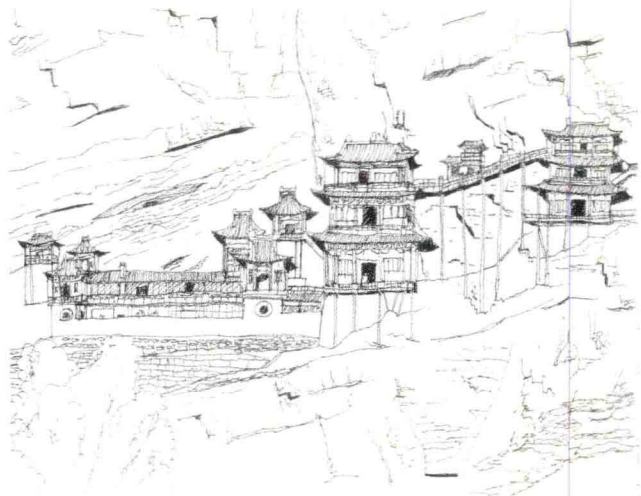
在这25年中，同济大学和伊利诺伊大学香槟分校合作的中国暑期学校规模虽小却是意义极其重要的国际项目。多年来，伊利诺伊大学香槟分校接待了一大批同济的教师。今年，同济大学建筑系两名访问学者和一名博士研究生访问了伊利诺伊大学。这个当初由两校共同构想的两个大国间的国际联合教育项目业已取得巨大的成功，它对参与其中的每位学生和教师的生活产生了积极的影响。



This joint venture in international design education was conceived by academic leaders of Tongji University and the University of Illinois at Urbana-Champaign in 1987. The first UIUC/Tongji University Summer Program in China in Architecture, Landscape Architecture and Urban Planning was designed and directed by Professor of Architecture, James P. Warfield and Professor of Landscape Architecture, Jonathan Hammond of the University of Illinois, and by Professor Zheng Shiling, the former Dean of the College of Architecture and Urban Planning (CAUP) at Tongji University in Shanghai. Featuring components of travel in China and formal study at Tongji University, the program stressed cross-cultural studies in the built environment with an emphasis upon international design issues. Since that first program in 1988, the project has continued under the coordination of Professor Warfield, involving over a dozen faculty from the University of Illinois and nearly 40 from Tongji University. It has fostered strong professional and personal relationships between Chinese and American faculty and students and has weathered international storms including the SARS outbreak in 2003. Conducted

approximately every other year (1988, 1991, 1993, 1997, 2000, 2002, 2004, 2006, 2008 and 2010) with student groups from the University of Illinois varying from 10 to 15 and an array of visiting faculty and administrators, the program has developed and flourished. This summer, Professor Warfield will conduct the 2012 program as a celebration of 25 years of cooperation between the University of Illinois and Tongji University.

In the course of its 25 year history, the China Program can list among its alumni a number of former students who are now making major contributions in the design profession in firms such as SOM, Norman Foster, Wiss-Janney-Elstner and HOK. The program's teaching membership has also excelled. Zheng Shiling became the Vice President of Tongji University and an outstanding contributor as leader of the architects and urban planners who have brought the city of Shanghai into the 21st century. He designed the first bridge across the Huangpu River opening Pudong and allowing a renaissance of modern architecture in that new financial center of China. He redesigned, Nanjing Road, the busiest shopping center in

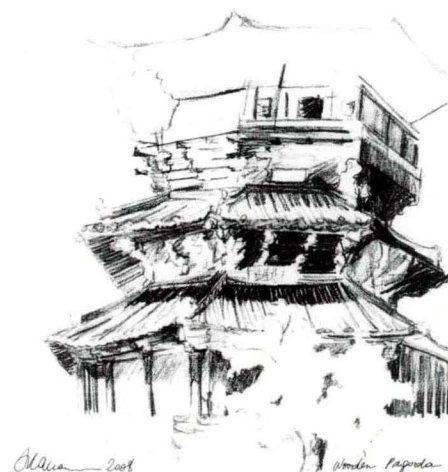
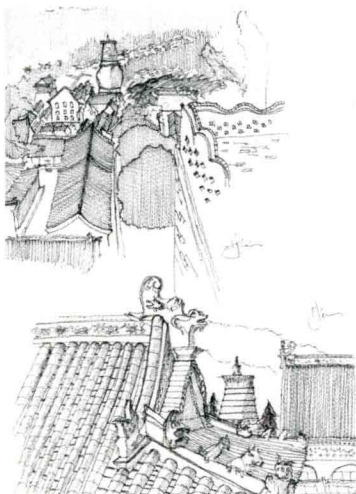


the world and has most recently been selected as the primary architect in charge of themes for Expo 2010. Wu Jiang, Professor Warfield's teaching assistant in 1988, became Deputy Director of Shanghai Urban Planning Administrative Bureau and has been playing a leading role in architectural preservation, and is now the Vice President of Tongji University. Wu Zhiqiang, the former Dean of CAUP and host of our program, and is now the Vice President of Tongji University, led the international design team which won the competition for the master plan of Expo 2010.

Since the beginning of the China program, Professor Warfield has conducted field research in vernacular architecture in a variety of rural communities throughout China, traveling after students return home and employing Tongji faculty and students as translators and travel guides. That research work was presented to the Chinese public in 2003 in the form of a major exhibit entitled "Inalterable Dreams: People and Architecture of China's Folk Environments" at the Deke Erh Art Center in Shanghai. The exhibit received national press

throughout China, and was later shown at I space in Chicago. Most recently, Professor Warfield has written *Roads Less Traveled* summarizing his research in worldwide vernacular architecture. It was published in China in English and Chinese by UN + Architecture and was released for international distribution in early 2008 at an opening of his exhibition at Kengo Kuma's Z58 in Shanghai.

For 25 years, the UIUC/Tongji University Summer Program in China in Architecture, Landscape Architecture and Urban Planning has remained a small, but significant international program. Over the years, the University of Illinois has hosted a number of Tongji faculty members in Champaign Urbana. This year, we welcome two visiting scholars and a first Ph.D. student from Tongji University to study in the School of Architecture. Conceived as a joint venture between two mighty nations and between two major universities, the program has succeeded most in its ability to remain small and personal affecting the lives of students and faculty alike.



同济 – 普林斯顿大学 2004：苏州古城区二号街坊城市设计

Tongji - Princeton University 2004: Urban Design for the No.2 City Block of Old Town Suzhou

设计者 / Designer:

同济大学 / Tongji University: 陈超, 唐莉, 郭志明, 李秋韵, 刘旻, 刘祖健, 聂兆征, 赵玮, 胡涛, 陈锋, 史晨鸣, 黄金玉, 殷勇, 方芳, 孙宏亮, 惠无央, 孙静, 胡宇之, 阮萍, 胡国剑, 柴旭原, 卜域, 万全, 雷刚 / Chen Chao, Tang Li, Guo Zhiming, Li Qiuyun, Liu Min, Liu Zujian, Nie Zhaozheng, Zhao Wei, Hu Tao, Chen Feng, Shi Chenming, Huang Jinyu, Yin Yong, Fang Fang, Sun Hongliang, Hui Wuyang, Sun Jing, Hu Yuzhi, Ruan Ping, Hu Guojian, Chai Xuyuan, Bu Yu, Wan Quan, Lei Gang
普林斯顿大学 / Princeton University: Adekunle Adeyemi, John Bassett, Christopher Leong, Brian Tabolt, Meredith Miller, Alysa Nahmias, Theresa Stehel, Els K Verbakel

指导老师 / Instructor:

同济大学 / Tongji University: 庄宇, 戴松茁 / Zhuang Yu, Dai Songzhuo
普林斯顿大学 / Princeton University: Mario Gandelonas, Els K Verbakel

合作院校 / Collaboration College:

普林斯顿大学 / Princeton University
同济大学建筑与城市规划学院 / CAUP, Tongji University

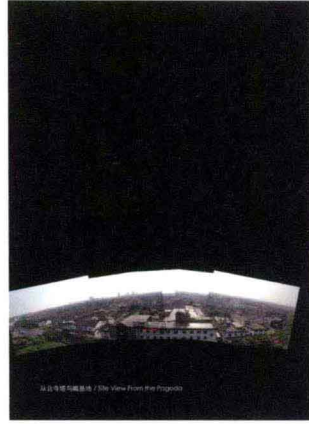
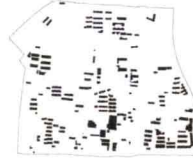
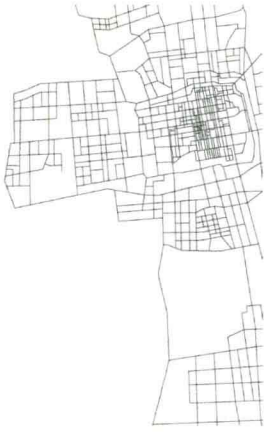
完成时间 / Completion time:

2004年9月 – 2004年12月 / September of 2004 - December of 2004

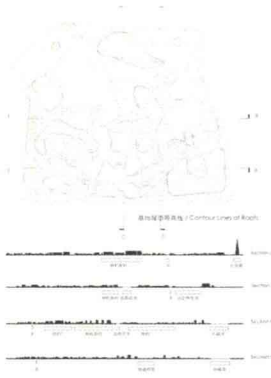
苏州古城区二号街坊位于古城西北角，北隔护城河与火车站相望，范围东起人民路，西至桃花桥弄，南抵桃花坞大街，总用地面积69.29公顷。二号街坊是超大地块，地势相对较低。用地现状混杂，既有唐寅故居、唐寅祠堂、朴园等历史遗迹，也有相对成片的传统民居，还包括不同年代改建的住宅楼和别墅，地块西北部分另有工业、仓储等其他用地，整体居住环境和质量均较差。地块沿人民路还有苏州丝绸博物馆、苏昆剧团等单位。课题试图通过城市设计手段改善超大地块的“不透明”状态，通过新的城市系统叠加等方法，沟通重组历史景观，调整功能，改善居住，保护和利用文物，将历史街区融入新的城市发展之中。

The No.2 City Block of Old Town Suzhou locates at the northwest inside the city river. It is a mega-block which is totally about 69.29 hectare, surrounded by Renmin Road to the east, Tao-Hua-Wu river to the south, the city river to its north and Tao-Hua Bridge Lane to its west. The site is also quite mixed. It includes the old house and memorial temple for Tang Yin - a famous Ming dynasty calligrapher and painter, Pu-Yuan garden, several old houses for some other famous historical figures, clusters of some traditional local style residential courtyards/ houses and Suzhou Silk Museum as well. The site is also consist of several factories/ warehouses at its northwest side. The altitude of the terrain slightly varies and is considerable low in topography compared with the other part of the old town.

In this studio, how to activate the mega-block with certain kinds of transparency should be taken into account. And how to dissolve segregated historical areas isolation within this city block and instead to integrate these attractions with overlapping a new 3-dimensional network of urban links is encouraged.



从山看楼与楼看山 / The View from the Pagoda

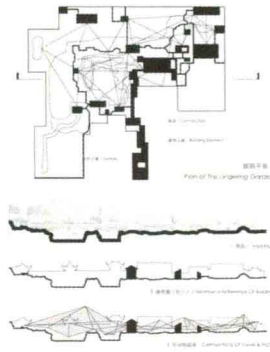


屋顶等高线 / Contour Lines of Roof

园林路径空间分析 / Path in Classical Gardens

园林中的路径空间 / Paths in Gardens

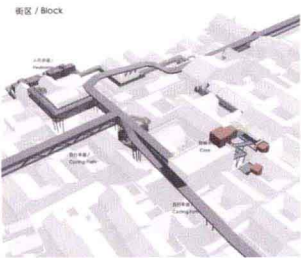
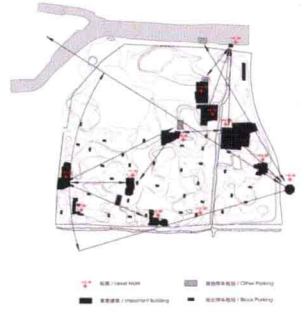
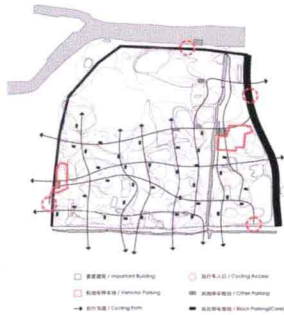
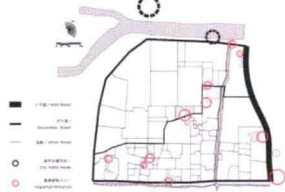
The ideology of Chinese classical gardens represents a unique approach toward nature. The buildings, being products of a long-tradition, strive to maintain the longest of their mode elements on their history.



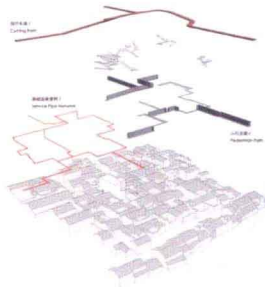
御花园 / Part of the Lingjing Garden



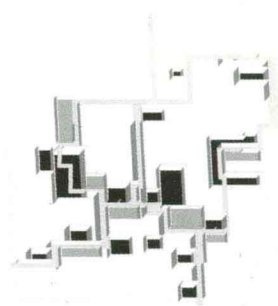
宫中御花园 / Inside the Palace



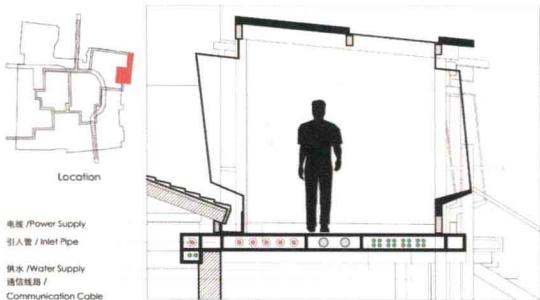
街区 / Block



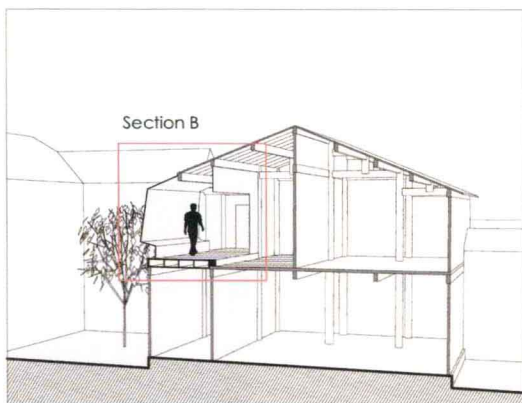
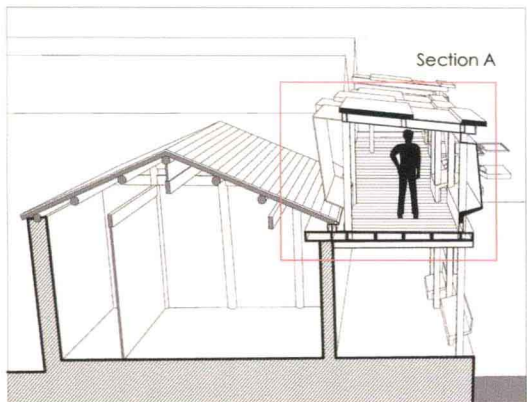
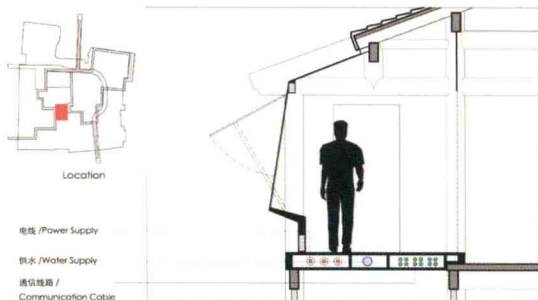
街区步行网络 / Pedestrian Path in Block



步行路径 / Pedestrian Path



步行路径 / Pedestrian Path



步行路径与自行车道 / Pedestrian Path & Cycling Path

街区中心 / Block Centre

