

JWDA AWARD- WINNING PROJECTS

JWDA 骏地设计 1977-2013

JWDA 骏地设计 著

 天津大学出版社
TIANJIN UNIVERSITY PRESS

JWDA AWARD- WINNING PROJECTS

JWDA 骏地设计 1977-2013

图书在版编目 (C I P) 数据

JWDA骏地设计 : 1977—2013 / JWDA骏地设计著. —

天津 : 天津大学出版社, 2014. 9

ISBN 978-7-5618-5181-4

I. ①J… II. ①J… III. ①建筑设计—作品集—世界—现代 IV. ①TU206

中国版本图书馆CIP数据核字(2014)第210915号

责任编辑 郝永丽

出版发行 天津大学出版社

出 版 人 杨欢

地 址 天津市卫津路92号天津大学内 (邮编: 300072)

电 话 发行部 022-27403647

网 址 publish.tju.edu.cn

印 刷 上海当纳利印刷有限公司

经 销 全国各地新华书店

开 本 224 mm × 290 mm

印 张 24.75

字 数 343千

版 次 2014年10月第1版

印 次 2014年10月第1次

定 价 328.00元

凡购本书, 如有质量问题, 请向我社发行部门联系调换

A Heartfelt Appreciation to Our Friends and Colleagues,
Whose Love and Passion for Architecture Inspire Us.

谨以此书献给热爱建筑的朋友们

032/113	HOSPITALITY DESIGN 酒店设计
036/051	DALIAN RED FLAG VALLEY GOLF COMMUNITY 大连红旗谷高尔夫社区 <i>2012 Gold Nugget Merit Award</i>
052/065	DEL MAR L'AUBERGE HOTEL 德尔玛L'AUBERGE酒店 <i>2008-2012 AAA Four Diamond Award</i> <i>2010 Illumination Engineer Society Awards</i> <i>2010 World's Best Resort Award</i> <i>2010 Reader's Choice: Best Continental Resort Award</i> <i>2010/2011 Best Local Hotel</i>
066/075	SAN DIEGO HOTEL INDIGO 圣地亚哥英迪格精品酒店 <i>2010 American Institute of Interior Design Award</i> <i>2010 Illumination Engineer Society Award</i>
076/085	SAN DIEGO HILTON BAYFRONT HOTEL 圣地亚哥希尔顿会议中心酒店 <i>2005 National Design-Build Institute of America (DBIA) Award</i> <i>2008 AGC Honors Award CA Construction</i> <i>2009 American Society of Civil Engineering Design Award</i>
086/093	SAN DIEGO CARLSBAD BEACH HILTON GARDEN INN 圣地亚哥希尔顿花园酒店 <i>2007 Best "Hilton Garden Inn" Award</i>
094/105	SHANGHAI JINMAO CHONGMING HYATT HOTEL 上海金茂崇明凯悦酒店 <i>2014 Gold Nugget Grand Award</i> <i>2014年度第九届金盘奖年度最佳酒店奖</i>
106/113	SHANGHAI INTERNATIONAL TENNIS CENTER & REGAL HOTEL 上海国际网球中心&东亚富豪酒店 <i>1995 AIA San Diego Merit Award</i> <i>1999年度上海市优秀设计奖</i>

CONTENTS / 目录

- 114/245** **UPSCALE RESIDENTIAL DESIGN**
豪宅设计
- 118/129** **SHANGHAI GEMDALE GREAT MANSION**
上海金地天境
2011 China Architectural Journal Award
2011年度中国房地产最具创新价值示范楼盘
- 130/141** **SHANGHAI HUANGPU BAY BUND HOUSE**
上海外滩黄浦湾
2009 Shanghai Best Residential Development Project Award
2012年度上海市优秀住宅工程设计一等奖
2012年度上海市优秀住宅工程设计二等奖
2013 Gold Nugget Grand Award
- 142/151** **HANGZHOU DEEP BLUE PLAZA RESIDENTIAL DESIGN**
杭州深蓝广场住宅设计
2007年度中国建筑艺术奖
- 152/159** **SAN DIEGO 15TH & COMMERCIAL**
圣地亚哥商业中心区高层经济住宅设计
2012 AIA Design Award
2012 San Diego Housing Federation Ruby Award
2012 Builder's Choice Award
2012 ASID Design Award
2013 San Diego County Federation Special Housing Project
- 160/167** **SAN DIEGO 16TH & MARKET**
圣地亚哥第16住宅综合区
2009 Contract Magazine Inspiration Award
2009 Builder's Choice Award
2009 Housing Project of the Year Award
2010 San Diego County Housing Federation Award
- 168/154** **SHANGHAI CIFI GULF RESORT**
上海旭辉圆石滩
2012 Gold Nugget Grand Award

180/189

SHANGHAI VANKE'S RANCHO SANTA FE

上海万科兰乔圣菲

2003年度全国人居经典建筑规划设计方案竞赛综合大奖（别墅精品）

190/199

SHANGHAI GUANTING FOUR LOTUS ART VILLA

上海观庭四荷艺墅

2011 Gold Nugget Merit Award

200/207

SHANGHAI VANKE'S FIRENZE VILLA

上海万科翡翠别墅

2013年度第三届第一财经 | 第一地产品质奖公益评选品质金奖、住宅类单项奖之最佳规划奖

208/217

SHANGHAI CENTRAL PARK LAKE VILLA

上海华润中央公园

2013 Gold Nugget Merit Award

2013年度第三届第一财经 | 第一地产品质奖公益评选住宅类单项奖之最佳规划奖

2014年度第九届金盘奖年度最佳综合楼盘奖

218/225

SHANGHAI JUNLINTIANXIA GARDEN

上海君临天下花园

2000年度“创新风暴”全国住宅设计夺标活动综合金奖

2000年度“明日星城杯”上海最佳住宅房型奖

2001年度上海市优秀工程设计（住宅）一等奖

226/235

SHANGHAI JUNLINYIHE GARDEN

上海君临颐和花园

2001年度上海市优秀工程设计一等奖

2003年度全国人居经典建筑规划设计方案竞赛综合大奖（别墅精品）

236/245

SHANGHAI SHENGDE HENGYE GARDEN

上海圣德恒业花园

2003年度全国人居经典建筑规划设计方案竞赛综合大奖（别墅精品）

CONTENTS / 目录

- 246/343** **URBAN DESIGN & PUBLIC ARCHITECTURE**
城市规划&公共建筑
- 250/261 **HANGZHOU ZHONGDA FUYANG FUCHUN LANDSCAPE COMMUNITY**
杭州中大富阳富春山水社区
2009 United Nations Habitat Planning Design Award
- 262/271 **SAN DIEGO CONVENTION CENTER SAILS PAVILION**
圣地亚哥帆船会议中心
CA Construction Link's "Best of California 2000" Award
2000 American General Contractor Association Award
2001 Design-Build Institute of America (DBIA) Excellence Award
- 272/279 **CORONADO JOHN W. FINN HALL CAMPUS HOUSING**
圣地亚哥海军基地
2012 Design-Build Institute of America (DBIA) Honor Award
2012 Gold Nugget Merit Award
2013 APWA Best Project Award
- 280/289 **SAN DIEGO NEUROSCIENCES INSTITUTE**
圣地亚哥神经科学研究所
"Best of 1996" Grand Orchid Award
1996 Project of the Year Award
1996 AIA San Diego Honors Award
1997 National AIA Honor Award
- 290/299 **SAN DIEGO NORTH COUNTY REGIONAL EDUCATION CENTER**
圣地亚哥北区教育中心
2007 San Marcos Redevelopment Educational Design Award
- 300/311 **HAINAN FISHERMAN'S WHARF COMMERCIAL STREET**
海南龙沐湾渔人码头商业街
2013 Gold Nugget Merit Award
- 312/323 **SHANGHAI ZHANGJIANG LOTUS CREATIVE CENTER**
上海张江集电港产业中心
2009 China Top 10 Sustainable Design Award
- 324/331 **SHAANXI HANZHONG XINGYUAN LAKE PLAN MUSEUM**
陕西汉中兴元湖规划展览馆
2013 Gold Nugget Merit Award
- 332/343 **SHANGHAI ICBC DATA CENTER**
上海工商银行数据中心
2003 AIA San Diego Citation Award

344/385

INTERIOR DESIGN

室内设计

348/355

SHANGHAI ICBC HEADQUARTERS TOWER

上海工商银行世纪金融大厦

2002 AIA San Diego "Best Interior Design" Award

356/363

SHANGHAI ICBC BRANCH OF THE BUND

上海工商银行外滩支行

2000 City of Shanghai Preservation Award

2001 AIA San Diego Honors Award

364/375

WUHAN ICBC BANK (PREVIOUS CITIBANK)

武汉工商银行私人银行

2013 Gold Nugget Merit Award

376/385

SHANGHAI JADE GARDEN

上海苏浙汇1933店

2009 AIA San Diego Top Honors Award

2009 Boutique Design Best Restaurant Award

386/391

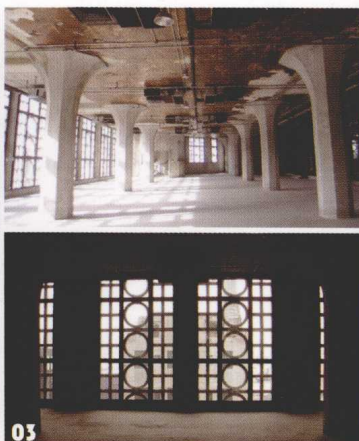
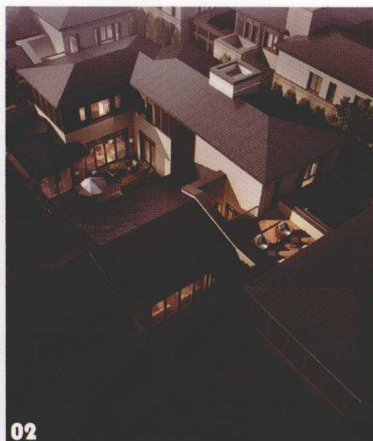
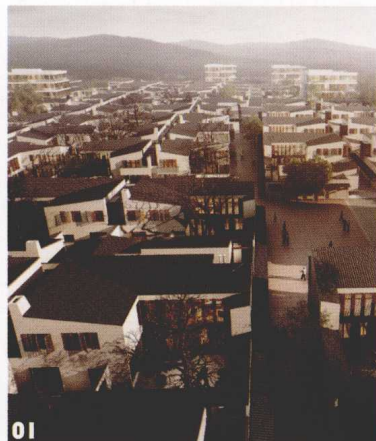
ANNALS

编年史

JWDA AWARD- WINNING PROJECTS

JWDA 骏地设计 1977-2013

PREFACE / 前言



PLACEMAKING

NEW PLACES-NEW FUTURE

Joseph Wong, FAIA

Joseph Wong Design Associates | Founding Partner · President

2014.05 | San Diego

Placemaking is both a process and a philosophy. It is a multi-faceted approach that builds our communities around places, reimagining public spaces as the foundation of a community. Conventional architectural theories are applied, broken, and transformed to produce innovative ideas for inhabiting public spaces. Placemaking integrates people, their communities, and the uniqueness of a site.

JWDA is looking to create new places and new future that strengthen the connection between people and the places they share. The ability to design relevant places at present stems from the connections between the past and the future. The COFCO Sun River Residential Development in Beijing, Jardin de Jade and the ICBC Branch of the Bund in Shanghai, and the ICBC Bank(Previous Citibank)in Wuhan are four examples of JWDA projects that are rooted in the past, relevant at present, and planned for the future.

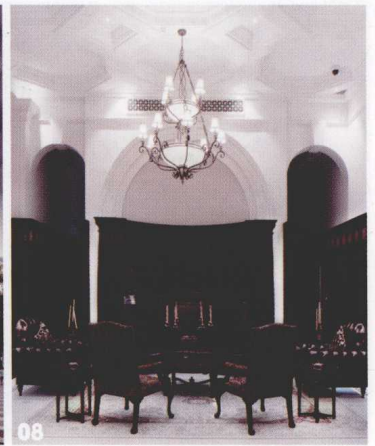
Beijing is a city rich in history and culture with an ever-growing interest to modernize. It is the capital of China, home to over 21 million residents. The urban districts that carry the core function of the city represent financial power, industrialization, and modern development. Consequently, traditional styles of family housing are being replaced by high-rise urban developments. In many aspects, high-rise residences are advantageous and efficient, especially in a city as populated as Beijing; but not at the cost of displacing its inhabitants and demolishing the beloved historical Hutong, or

"Courtyard"home (Fig.1).

The COFCO Sun River Residential Development highlights the over 2,000-year-old traditional home style of Beijing with modern design elements and amenities, transforming the historic landmark—Hutong into a reimagined place (Fig.2).

As the history of the Hutong is to Beijing, eclectic architectural styles are to Shanghai. Shanghai has a rich collection of distinctive buildings with various architectural styles, including Neo-Classic, Baroque, Romanesque, and Art Deco. Shanghai boasts several splendid Art Deco landmarks as a result of a construction boom in the 1920s and 1930s. These iconic buildings are celebrated today because they represent a unique cultural identity to Shanghai.

In 2009, JWDA embraced the opportunity to transform an existing Art Deco building—rich in ornamental details and cultural significance—into an architectural vision of history and innovation with the Jardin de Jade restaurant design. Originally built in 1933 as an abattoir, the Jardin de Jade building offers vast, beautifully proportioned loft life spaces, floor-to-ceiling windows with an Art Deco flair and stately fluted columns (Fig.3). The restaurant was designed and created to nestle within the grand structure of this historical building in the heart of Shanghai. It is a fusion of historical



and modern design, creating a bold mix of existing and newly imagined elements (Fig.4). JWDA understood the importance of preserving the historical structure while adapting the design to modern requirements.

The Bund is one of the most famous historical areas in Shanghai, housing the headquarters of many, if not most, of the major financial institutions operating in China. Many buildings identify the Bund, with its renowned waterfront location, as the symbol of Shanghai. JWDA restored and renovated the monumental ICBC Branch of the Bund in the historic Bund District. The building was originally built before WWII, and the design objective was to return the building to its original state while meeting current building regulations (Fig.5-6). Since the Bund was formerly the center of Western economic power in China, the building embodies the eclectic dialect of financial institutions worldwide.

Similar to the ICBC Branch of the Bund, JWDA revitalized the historic Wuhan Citibank with a renewed sense of purpose in modern China. Wuhan Citibank is a six-story building designed in the classical architectural style, built in 1921. Classified as a culture relic protection unit in Hubei Province, the building is one of a select group of special architectural sites that the central government has designated for preservation. Designed by the American Architect Henry Murphy from Hemming & Berkley, it is representative of the architectural style of financial institutions of the period. The façade consists

of light-colored granitic stucco with striking horizontal ornaments and Ionic-ordered columns (Fig.7). JWDA preserved, enhanced, and renovated Wuhan Citibank, optimally incorporating the existing historic elements of the building into contemporary bank functions (Fig.8).

Placemaking values the uniqueness of an environment. San Diego Hotel Indigo, Atmosphere Affordable Housing, Del Mar L'auberge Hotel, and the Jinmao Chongming Hyatt Hotel highlight JWDA's commitment to creating places that respect their local site and context.

The Hotel Indigo is located in San Diego. JWDA transformed a brownfield into a luxury hotel that reflects the city's inviting, coastal lifestyle with indoor/outdoor spaces that blend the San Diego setting with the comfort, high-tech, at-home feel of the hotel (Fig.9-10). It boasts various mediums of local artwork throughout while catering to the local architectural style—perfectly blended leisure and chic. Keeping the client and guest in mind, JWDA celebrated the San Diego climate with operable windows, allowing more natural daylight to enter thus reducing the need for artificial lighting and air-conditioning costs. The Hotel Indigo has the distinction of many "firsts" in San Diego sustainable hospitality design: Hotel Indigo is the first sustainably built hotel in San Diego, the first building to achieve LEED certification, the first downtown San Diego building to have a green roof, and the first LEED-certified hotel in the U.S. for the InterContinental

PREFACE / 前言



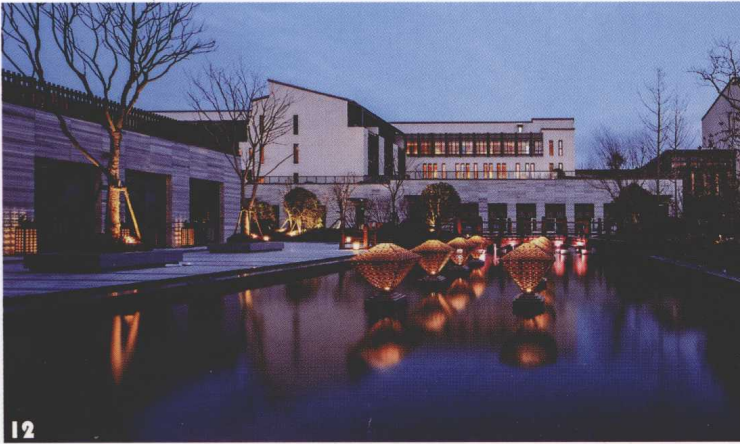
Hotels Group. It is a unique destination, place, and landmark in San Diego. Atmosphere Affordable Housing responds to the overwhelming need for decent and affordable housing in San Diego. Developed by Wakeland Housing and Development Corporation, Atmosphere is sponsored by the City of San Diego Redevelopment Agency as well as the San Diego Housing Commission. As an urban infill development project, Atmosphere will utilize a previously abandoned site in the established downtown neighborhood of Cortez Hill. Various building typologies surround the project that reinforce the desirability to live in the area. Community amenities include public transportation, parks, a community center, schools, restaurants, and markets, all located within walking distance of the complex.

The design of Atmosphere delicately responds to the site's unique circumstance. It is carefully situated and carves out spaces that interweave the surrounding context into the building, creating indoor/outdoor environments that enhance community engagement and interaction (Fig.11). This highly efficient complex offers various housing options including studio, 1-, 2- and 3-bedroom units which are meticulously designed to maximize space and comfort for its residents.

Specificity to site and the opportunity to create a unique destination initiated the Jinmao Chongming Hyatt Hotel project. The Jinmao Chongming Hyatt Hotel is located in the Dongtan Wetlands which is one of the most beautiful

nature reserves in Chongming Island, Shanghai. The hotel is the first Hyatt eco-resort in China. The design of the hotel organically integrates traditional Eastern garden spaces and dispersed holiday resort elements to create a localized "Modern-Chinese" architectural style. It also reflects the classic Jiangnan architectural style popular in the region, which is characterized by white walls, grey tiles, and bridges (Fig.12). The complex is based on a series of courtyards interwoven into the surrounding landscape (Fig.13). The hotel becomes a destination for those desiring an escape from city life to a quiet retreat, allowing the user to fully engage with the environment. It creates a place untouched by people.

Del Mar is the quintessential beach city in San Diego, known for its Mediterranean climate and relaxing lifestyle. JWDA provided architectural services to renovate Del Mar L'auberge Hotel, transforming a passé hotel into a choice San Diego destination. This cozy 120-room inn by the sea offers its guests comfortable yet elegant architectural features reminiscent to the San Diego coastal lifestyle of indoor/outdoor living. Aside from picturesque views of the ocean, its beachfront location and modern updates helped transform L'auberge into one of the region's pre-eminent contemporary and luxurious beach resorts (Fig.14).



12



13

PEOPLE

CLIENT-USER-COMMUNITY

Architecture is a product of society, reflecting the life styles, culture, and people. Design that responds to the needs of an individual, a group and to a larger extent, the needs of a community, is a vital component of the architectural process and ultimately defines the success of that project's function.

JWDA works to create an environment that is relevant, appropriate, and reflective of the user's needs. From our design team to the client to the user to the community in which the project is embedded, people are the common denominator to the design decisions we make. The culture of our firm is based on the ability of our team of diverse individuals with varying perspectives to come together as a cohesive unit, determined to achieve architectural excellence. The excellence refers to the ability of a design to fulfill a purpose, through artful expression of optimal function.

JWDA has embarked on a mission of social responsibility that makes the built environment become a place that services the user and the community. Upon its completion in 2009, 16th & Market was the only affordable housing complex in San Diego serving families earning up to only 50% of the median area income. It would have been easy for the developer and designer to create something utilitarian. Instead, the collaboration between Father Joe's Villages and JWDA produced an exceptional building. 16th & Market enhances the street with ground-floor retail, community outreach facilities, a courtyard recreational area, and a rooftop common area (Fig.15). The design of 16th & Market responds to the site's unique circumstance. It not only responds to the community need for affordable family housing in San Diego, but also provides a sophisticated solution to urban living in downtown San Diego.

COLLABORATION

INDIVIDUAL PERSPECTIVE- TEAM METHODOLOGY

True collaboration provides the richness of vision that comes when people from different groups bring a broad range of perspectives to bear on a particular project. Collaboration is a key principle in our design philosophy. Innovation is a result of listening, responding, imagining, and rethinking. Collaboration is a constant from the conception of an idea to its execution. In the end, design is a continuous evolution that requires the attention of all members involved in a project.

PREFACE / 前言



RESEARCH

THOROUGH & DELIBERATE

Analytical thinking and critical research drive projects to optimal design solutions. Thorough and deliberate research defines the project parameters in real terms. Developing case studies relevant to the project typology and site promotes an acute awareness of possibilities for the project. However, case studies are not matter-of-fact research solutions. They must be investigated in terms of the nuances of a site. This approach often leads to the discovery of fresh ideas relevant to the project. In celebrating these nuances, we create designs that are both innovative and uncommonly sensitive to the particular site.

Placemaking is a shared value, in which every perspective contributes to the project and has important implications. This shared attitude demonstrates a collective intent that promotes discovery as well as shapes humanity's future.

DISCOVERY

LEAD TO INNOVATION

Challenging existing conventions leads to the discovery of fresh ideas. Conventional research can only get you so far. Fresh ideas stem from conventional research paired with innovative, forward-thinking intellect, theory, and sometimes a little bit of heart. Innovation inspires us as designers to look to the future and create places that integrate practice and theory. Our objective is to inspire others to explore endless possibilities through the built environment.

Our sense of discovery is stimulated by a team mentality and by the drive and explorative nature of the firm's individuals. It brings individual ideas to group collaboration, fostering the ideation process. A collective vision of the future unites people around a larger vision of what "could be". This vision quickly evolves into an implementation strategy where we create places that bring benefits to public spaces and the people who use them.



16

OPPORTUNITY

FROM THEORY TO PRACTICE

JWDA's philosophy stems from the principle that architecture is an opportunity to enhance human existence. The power of design can affect social and economic change as well as support the most deeply felt emotions of individuals and communities.

Entering design competitions is one way that JWDA wins projects. Competitions spur creativity and engage the public. The Greenland Luogang Mixed-Use Master Plan Development was designed by JWDA as the winning entry in a competition sponsored by the Chinese developer, Greenland. Sustaining over 14 million residents, Guangzhou—China's third largest city and the capital of Guangdong Province—is accustomed to thinking big. The winning entry proposes an array of individual parcels for future program flexibility and sustainable practices under the concept of "Garden Town." Connections between individual buildings and their relationship with the site become more important than the individual building. "Garden Town" emphasizes pedestrian areas, community spaces, green terraces and roofs, and high-performing sustainable practices relevant to today (Fig.16). The project becomes a unique destination, integrating various activities and building typologies together while celebrating energy efficient technologies (Fig.17).



17

RESULTS

ELEVATED PERFORMANCE

Performance is defined as the execution of an action. At JWDA, we strive to provide our clients with an elevated standard of performance. Ultimately, our design solutions produce quantifiable and superior results, as evidenced by the receipt of more than 200 regional and international awards of excellence. Throughout the world, JWDA has created original, award-winning designs that are functional, efficient, and site-specific. With its talented team of architects, interior designers, landscape designers, planners, and research team members, JWDA has maintained its reputation for developing top quality, meticulously coordinated, and smoothly delivered projects to its clients over the years. We honor both our client and the people our projects serve.

Many of JWDA's current employees have been with the firm for over ten years, providing a seasoned and stable base of operations as well as the knowledge and experience required for ongoing professional growth and exceptional client service. Our longevity in practice is a testament to the individuals that represent JWDA. Each project is a new beginning and opportunity to become your trusted partner. We hope that this book is a testament to our beliefs, specifically in our commitment to create lasting and satisfying architecture that puts people first.

PREFACE / 前言

场所营造

新场所—新未来

场所营造是一个过程，也是一种理念。这是一种多元化的方法，将不同场所形成社区，使公共空间经过重塑成为社区存在的基础。如此，传统建筑理论经过“取其精华，去其糟粕”后形成了居住型公共空间的创新理念。场所营造是人类、社区以及场所独特之处的融合。

JWDA骏地设计着眼于创建“新的场所，新的未来”，旨在增强人与公共场所之间的联系。JWDA骏地设计对目前相关场所的设计基础是连接着过去和未来的。北京的中粮孙河住宅项目、上海的苏浙汇餐厅和工商银行外滩支行以及武汉的工商银行私人银行，是JWDA骏地设计的四个案例，设计根植于过去、关联于现在并规划为未来。

北京——中国的首都，是一个拥有悠久历史和文化、欣欣向荣的现代化城市，拥有2 100万常住人口。市区承载着城市的核心功能，代表着经济实力、工业化和现代化发展水平。因此，传统型家庭住宅正在不断被高耸的都市建筑所替代。高层住宅优势突出，可容纳更多人口，尤其是在像北京这样人口众多的城市，但是现代化的代价不应是侵害居民利益，拆除受人景仰的、具有历史价值的胡同或四合院（图1）。

中粮孙河住宅项目既体现了北京城2 000多年的传统住宅风格，也整合了现代设计元素和便利设施，赋予历史地标——胡同新的气象（图2）。

正如胡同之于北京的历史意义，折中派建筑风格对于上海一样具有重要意义。上海拥有众多特色建筑，风格多种多样，包括新古典、巴洛克、罗马式和装饰派。上海耸立着众多源于20世纪二三十年代建筑繁荣时期的地标建筑，它们充满艺术气息，装饰精美。这些标志性建筑代表了上海独特的文化特色，至今仍被人称道。

2009年，JWDA骏地设计迎来一次机遇，改造一栋现有的摩登建筑——苏浙汇1933店。原建筑始建于1933年，当时是一个屠宰场。该建筑装潢精致，文化意义深远，设计须使其具有历史气息，同时令人耳

目一新。苏浙汇餐厅设有阁楼和落地窗，空间宽敞、布局精良，凹槽柱摩登庄重（图3）。苏浙汇餐厅的设计建造，使这个宏伟而又悠久的历史建筑完美融入上海市中心。这是历史与现代的融合，是现有元素和新兴元素的鲜明混搭（图4）。JWDA骏地设计深知设计需要保留建筑历史风貌并满足现实需求。

外滩是上海最著名的历史地段之一，分布着当时中国几乎所有主要金融机构的总部。众多建筑成就了外滩，使著名的外滩中心成为上海的标志。JWDA骏地设计承接并修复、翻新了位于外滩的工商银行外滩支行。这是一座里程碑式的历史建筑，始建于第二次世界大战前。设计目标是还原建筑原始风貌，同时满足现代建筑标准（图5、图6）。外滩曾是西方金融力量在中国的中心，建筑不拘一格，体现了全球金融机构的特有风格。

同工商银行外滩支行一样，JWDA骏地设计复原了原武汉花旗银行，现为武汉工商银行私人银行，使其在现代化的中国具有了全新的意义。原武汉花旗银行是一幢六层高的古典风格建筑，建于1921年。湖北省将其归为文化保护单位，同时，该建筑还是中央政府指定的特殊保护建筑之一。该建筑由来自美国赫明和伯克利公司的建筑师亨利·墨菲设计，体现了当时金融机构的建筑风格。建筑正面采用浅色花岗岩灰泥，配以水平装饰和埃尼奥柱子（图7）。JWDA骏地设计对该建筑加以保存、巩固并翻新，将现有历史元素完美融入现代银行职能（图8）。

场所营造十分注重环境的独特性。圣地亚哥英迪格精品酒店、ATMOSPHERE环境保障住房、圣地亚哥德尔玛L'auberge酒店以及上海金茂崇明凯悦酒店便是此类设计的突出代表。

英迪格精品酒店位于圣地亚哥。JWDA骏地设计将一片棕色地带改造成了豪华酒店，反映了城市的热情好客、海滨风情以及完美的室内外空间，充分将舒适、高科技、宾至如归的酒店服务与当地环境融合（图9、图10）。酒店整体镶饰着大量具有当地艺术气息的装饰品，迎合了

黄安和 美国建筑师协会会员
JWDA骏地设计 | 创始合伙人·董事长
2014.05 | 圣地亚哥