

BY CYCLE

自·行·车

The cooperation workshop between students from Tongji University,
Design Skolen Kolding and Folkwang University

杨文庆 刘力丹 主编

目录

CONTENTS

PRELUDE

PREFACE

TEACHER GROUP

PROCESS ——— 01

FINAL DESIGN WORKS ——— 011

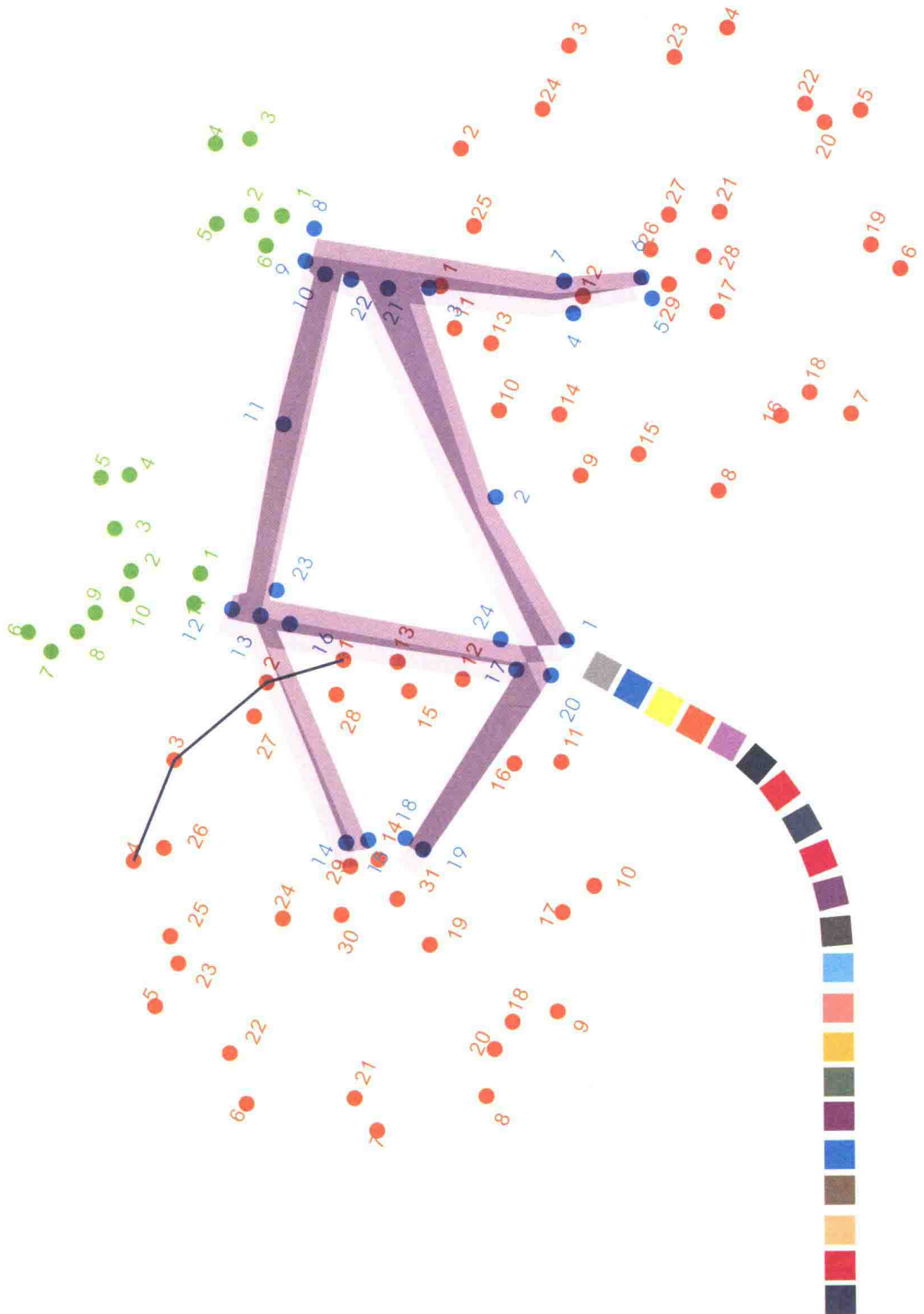
BICYCLE DESIGN ——— 015

ARC/017	SHAO/065
BLACKBOARD/023	STURDY/071
CHI/029	TEN/077
EDGE/035	THE V/083
FREDERIK/041	XPO/089
KITE BIKE/047	YI/095
RHYTHM/053	ZEUS/101
PIAO/059	

INTERACTION DESIGN ——— 107

FLOATING AIMS/017
KEEP MOVING/117
NAVILIGHT/125
SEED/133

OUR COMMENTS AND FEELINGS ——— 141



PROCESS



9:00am, 2009-9-14
Mingcheng Building
Tongji University, China

Welcome

Meet with each other
Project Introduction
Say Hi

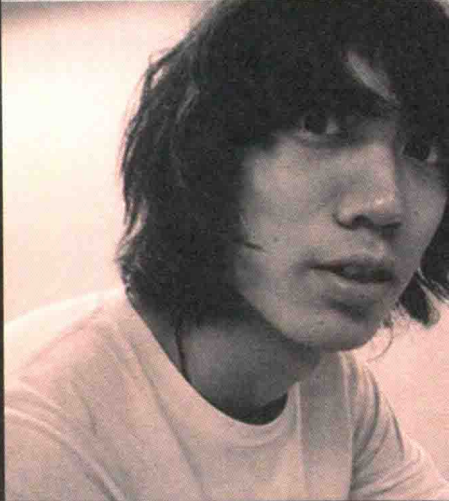
Afternoon, 2009-9-14

Research

Downtown Area
Shanghai, China
See local cultural
Overview bicycle market

项目开始

2009年9月4日，在同济大学明成楼进行了简短的欢迎仪式以及项目介绍之后，德国、丹麦和中国的学生共组合成5个小组分头进行市场调研。



2009-9-15 2009-9-24
Comprehensive Building
Tongji University, China

Schematic design

Brain storm
Sketch

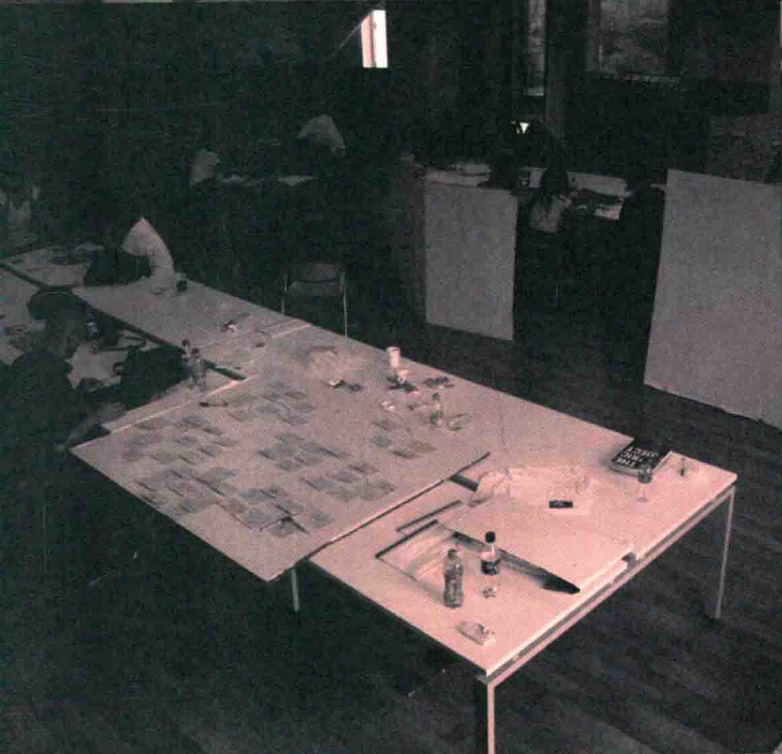
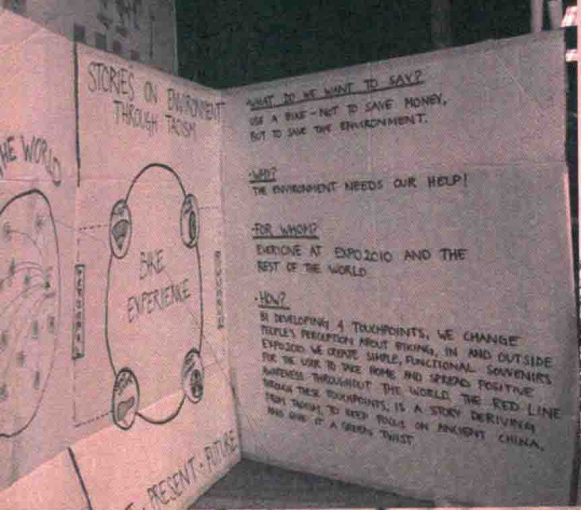
2009-9-25 2009-10-4
Comprehensive Building
Tongji University, China

Further Development

Feasibility discussion with Forever

方案确定及深化

2009年9月15日至10月4日，同学们分组进行了头脑风暴，确定方案概念，完成草图、二维及三维建模的过程，并且和来自于永久自行车有限公司的工程师讨论了方案的可行性及对策。



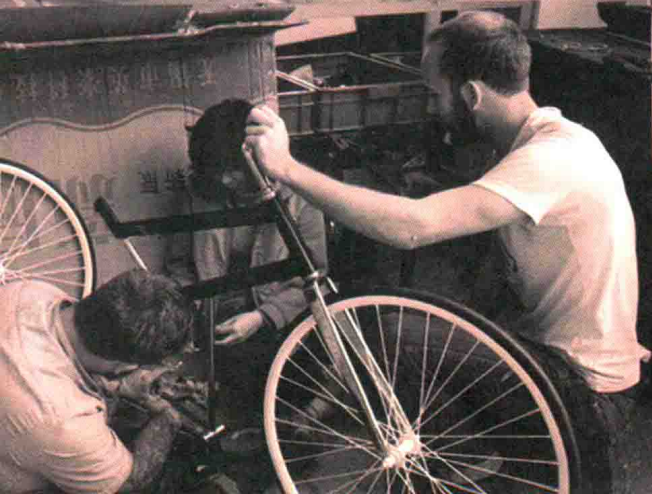
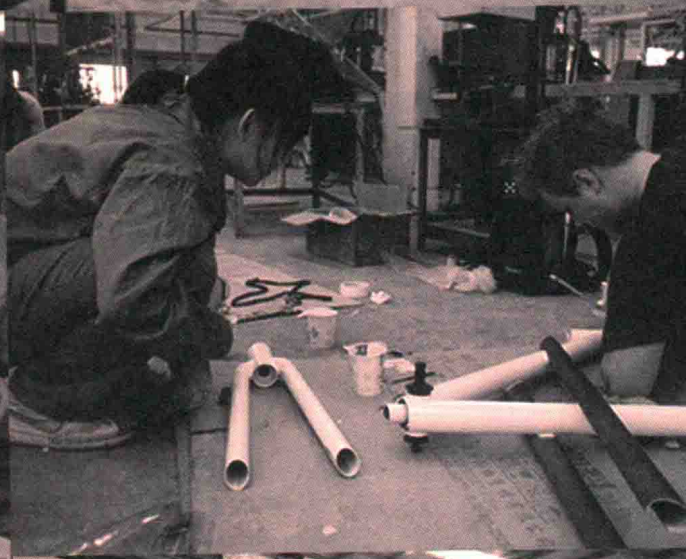
2009-10-5 2009-10-15

Prototype

Forever Factory & Tongji University

模型制作

2009年10月5日至15日，全体参与设计的学生在永久自行车工厂进行模型制作，交互小组在学校继续进行方案的深入探讨。



Exhibition

2009-10-16 2009-10-21

Shanghai International Creative
Industry Week

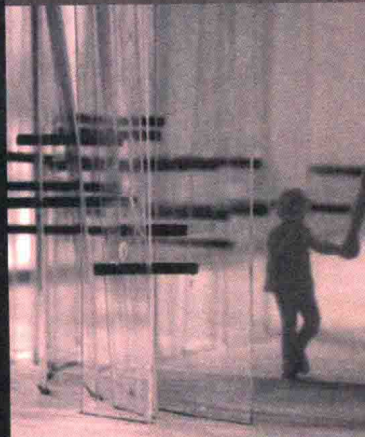
2009-10-22 2009-11-5

Comprehensive Building, Tongji
University, China

On 10th November, these works
were sent to Denmark and
Germany and will be back again
in 8th Shanghai Biennale 2010.

展览

2009年10月16日至21日所有模型在上海国际创意产业活动周上展示，并于10月22日至11月5日在同济大学综合楼举办专门展览。11月10日，所有自行车以及部分交互模型被运往丹麦展示。请您在关注本书的同时继续关注我们的各项展览。2010年上海双年展，您将有机会再次看到我们的作品。



FINAL DESIGN WORKS

BICYCLE DESIGN & INTERACTION DESIGN

BICYCLE DESIGN/自行车设计

We set 15 personas such as the architect, elderly, Chinese family, children and businessman; from the focus of former research and design works. In the first two weeks we decided our concept after brainstorming and group discussions. The next two weeks were spent in the Forever factory, where we actualized the bikes. After bending, welding, grinding and painting, we finally finished 15 new bikes that embody both innovation and practicality, ending the four-week workshop perfectly.

在此次联合自行车设计项目中，首先设定了建筑师、老人、中国父女、儿童、商人等15组目标角色，针对每组的目标角色进行设计定位和市场调研等一系列前期工作。我们利用2周时间不断地讨论修改并最终确定了方案，其后的15天我们在永久工厂亲身参与自行车模型的制作。经过弯管、焊接、打磨、上腻子、喷漆等诸多工序，15辆创新性兼具实用性的自行车最终呈现在面前，为33天的紧张工作划下了完美的句号。

INTERACTION DESIGN/交互设计

Based on the background of the EXPO, we designed four public bicycle interaction systems considering different issues such as way finding and environmental talking. All the design works aim at developing new experiences and possibilities in the user process.

Firstly we set a Pitch as the concept of each group before we did social research to ensure that our design integrates the features of both international and Chinese traditional culture. After a whole month of brainstorming, heated discussions, logical development and many experimental texts, we completed the four design works and made models for exhibition.

在这个项目中我们立足于世博会环境，从寻找路径、环境讨论几个课题出发，围绕自行车设计了4个公共交互系统，为人们在使用的过程中获得新体验与可能性作出了探索。

我们设定了 pitch 作为各个组目标的概述，之后进行社会调查，确保设计既具有开放的国际性，又保留中国文化自身的色彩。一个月来经过头脑风暴，激烈讨论，逻辑的发展和反复实验测试，产生了呈现在您面前的最终的4组方案，并且制作了展示模型。

BICYCLE DESIGN