



THE WORLD 世界建筑事务所精粹 ARCHITECTURAL FIRM SELECTION II

OFFICE BUILDING / COMMERCIAL BUILDING / CULTURAL
BUILDING / RESIDENTIAL BUILDING / COMPLEX BUILDING
办公建筑 / 商业建筑 / 文化建筑 / 住宅建筑 / 综合建筑

深圳市博远空间文化发展有限公司 编

THE WORLD 世界建筑事务所精粹 ARCHITECTURAL FIRM SELECTION

OFFICE BUILDING / COMMERCIAL BUILDING / CULTURAL
BUILDING / RESIDENTIAL BUILDING / COMPLEX BUILDING
办公建筑 / 商业建筑 / 文化建筑 / 住宅建筑 / 综合建筑

深圳市博远空间文化发展有限公司 编



天津大学出版社
TIANJIN UNIVERSITY PRESS

图书在版编目(CIP)数据

世界建筑事务所精粹: 全3册 / 深圳市博远空间文化发展有限公司编. — 天津: 天津大学出版社, 2013.5

ISBN 978-7-5618-4622-3

I. ①世… II. ①深… III. ①建筑设计—作品集—世界
IV. ①TU206

中国版本图书馆CIP数据核字(2013)第066708号

责任编辑 郝永丽

策划编辑 刘谭春

世界建筑事务所精粹 I

深圳市博远空间文化发展有限公司 编

出版发行 天津大学出版社

出版人 杨欢

地址 天津市卫津路92号天津大学内(邮编: 300072)

电话 发行部 022-27403647

网址 publish.tju.edu.cn

印刷 深圳市彩美印刷有限公司

经销 全国各地新华书店

开本 245 mm×330 mm

印张 60

字数 810 千

版次 2013年5月第1版

印次 2013年5月第1次

定价 998.00元(共3册)

(凡购本书, 如有质量问题, 请向我社发行部门联系调换)

PREFACE

PREFACE

In the past few decades, the practice of architectural design has developed towards the postmodern design concept with collage, mixture and coexistence from the modernism on the basis of functionalism and single typology. Rationality turns to be the theme of the development clue of architecture from the modernism stage dominated by the geometric form to the postmodernism stage with multiple mixing symbols. Both the architecture and the social activities of human penetrate and promote each other. The history, economics, philosophy, sociology, etc. have exerted unprecedented influence on the theory and practice of architecture design, which enable the contemporary buildings to obtain the ecological characteristics with multi-elements. The thoughts of architecture such as the phenomenology, semiology, structuralism and deconstruction endow the architecture in this era with symbolic interpretations and create the works for this era.

The innovative and pioneering architects open up new possibilities of the functions, spaces and forms of the architecture with non-traditional innovative spirit and creative practices. The design methodologies based on the information technology, such as the nonlinear design, parametric design and virtual construction, greatly enrich the design measures of the architects, and open the gate towards the architecture in the new era. The unrealized design creations such as non-standardization, structural skin, free form and surreal characteristics under traditional design conditions have displayed themselves with the development of the digital technology, information technology, structure and material technology. The architecture breaks through the restraints from the structure and function, and the shape and space tend to be more complicated and intriguing, displaying the unique characteristics and times imprinting of the contemporary architecture. Extensive excellent cases and architectural practices are provided in this book, which offers architectural cases with different functions, scales, fields and cultural backgrounds. Readers can spy into the influences and expressions of the above mentioned architectural thoughts and design methodology in the excellent architectural creations, thus achieving thought-provoking inspiration and apperception.

Wang He
January 28, 2013

序言

在过去的几十年，建筑设计的实践从功能主义和单一类型学基础上的现代主义向后现代的拼贴、混合、共存并置的设计思想发展。建筑从强调几何形体构成的现代主义时期，到多元符号混合的后现代主义时期，理性成为这一发展线索的主题。建筑与人类的社会活动相互渗透、相互促进。历史学、经济学、哲学、社会学等都对建筑设计理论与实践产生了空前的影响，使当代建筑呈现出多元并存的生态特征；现象学、符号学、结构主义、解构主义等建筑思潮都给这个时代的建筑赋予了标志性的注释，并创造出属于这个时代的作品。

勇于创新 and 开拓的建筑师以颠覆传统的创新精神和创作实践，开拓了建筑功能、空间、形式的新可能。非线性设计、参数化设计、虚拟建造等后工业时代以信息技术为基础的设计方法论极大地丰富了建筑师的设计手段，打开了通向新时代建筑的大门。非标准化、结构性表皮、自由形体、超现实的特征等在设计条件下难以实现的设计创作，随着数字技术、信息技术、结构与材料技术的发展，一一呈现在世人面前，建筑自身突破了结构与功能的约束，造型与空间更趋于复杂与耐人寻味，表现出当代建筑独有的特征和时代印记。

本书提供了大量的优秀范例和建筑实践，呈现了不同功能、不同规模、不同地域和文化背景的建筑案例。读者可以从中窥探到以上建筑思潮和设计方法论在优秀建筑创作中的影响与展现，并从中得到思考性的启发与感悟。

王禾

2013年1月28日

序言

目录 CONTENTS

办公建筑 OFFICE BUILDING

- 008 **WUHAN CENTER**
武汉中心
- 014 **EOS—MICROSOFT EUROPE HEADQUARTERS OFFICE COMPLEX**
EOS——微软欧洲总部办公大楼
- 020 **SOUTH NINGBO BUSINESS DISTRICT**
宁波南部商务区
- 026 **JINSHANGU CREATIVE OFFICE PARK**
金山谷创意产业园
- 030 **CHEUNG KONG CENTER**
长江集团中心
- 036 **SHENZHEN LOGAN CENTURY PLAZA**
深圳龙光世纪大厦
- 042 **SHANGHAI HUANGPU CENTER**
上海黄浦中心
- 050 **XI'AN TELEVISION BROADCASTING CENTER**
西安广播电视中心
- 058 **JINAN HANYU FINANCIAL CENTER**
济南汉峪金融中心
- 064 **JIANGXI NANCHANG INDUSTRIAL PARK OF YONYOU GROUP**
江西用友集团南昌产业园
- 070 **TWO E-COM CENTER**
两个电子商务中心
- 076 **TEMPO SCAN TOWER**
TEMPO SCAN TOWER
- 082 **HONGQIAO AIRPORT TECHNOLOGY**
虹桥临空科技产业楼
- 086 **EXALTIS TOWER AT LA DÉFENSE**
拉德芳斯 Exaltis 大厦

商业建筑 COMMERCIAL BUILDING

- 094 **TAIPEI GALLERY**
台北艺廊
- 100 **CROWNE PLAZA SHENYANG INTERNATIONAL**
沈阳国际皇冠假日
- 106 **ZHENGZHONG GOLF YINXIU SHANJU HOTEL, SHENZHEN**
深圳正中高尔夫隐秀山居酒店
- 114 **MAOYE TIMES PLAZA**
茂业时代广场
- 122 **GUANGZHOU SOUTH LAKE HOTEL**
广州南湖宾馆
- 128 **EXPO INTERCONTINENTAL HOTEL**
世博洲际酒店
- 134 **CHINA HUASHUIWAN RESORT AND HOTSPRING SPA**
中国花水湾度假酒店及温泉水会
- 140 **TAIKOO HUI MIXED-USE DEVELOPMENT**
太古汇
- 146 **BEGONIA BAY INTERCONTINENTAL RESORT HOTEL**
海棠湾洲际度假酒店
- 152 **JINAN HANG LUNG PLAZA**
济南恒隆广场





文化建筑 CULTURAL BUILDING

- 160 **MERCEDES-BENZ ARENA**
梅赛德斯奔驰文化中心
- 166 **HONG KONG LINGNAN UNIVERSITY
COMMUNITY COLLEGE**
岭南大学社区学院
- 174 **SHANGHAI EXPO CENTER**
世博中心
- 178 **CAPITAL NEW AIRPORT HOTEL BEIJING**
北京新国际机场酒店
- 184 **LIBRARY OF PUBLIC INFORMATION**
公共资讯图书馆
- 190 **HUNYA CHOCOLATE MUSEUM**
宏亚巧克力博物馆
- 196 **HUADU DONGFENG STADIUM**
花都东风体育馆
- 202 **CHILDREN' S PALACE AND
LIBRARY IN BAOTOU CITY**
包头市少年宫、图书馆
- 208 **XU XIAKE EXPO PARK**
徐霞客旅游博览园
- 214 **WHITE SAND SHORE AND VISITOR CENTRE**
白沙湾海水浴场旅客服务中心
- 218 **THE GRADUATE APARTMENT OF
TONGJI UNIVERSITY**
同济大学研究生公寓
- 226 **SHANDONG PROVINCIAL
HOSPITAL EASTERN DISTRICT**
山东省立医院东院区
- 230 **YINCHUAN CULTURE AND ART CENTER**
银川文化艺术中心
- 234 **SHANGHAI WORLD EXPO THEME PAVILIONS**
中国 2010 年上海世博会主题馆
- 240 **GUANGZHOU ASIAN GAMES HALL**
广州亚运馆

住宅建筑 RESIDENTIAL BUILDING

- 248 **THE RIVERSIDE — EAST PARK**
山水文园——东园
- 254 **SHANGHAI MINI MANSION**
上海 MINI 公馆
- 258 **LONGHU ORIGINAL
MOUNTAIN VILLA CLOSE COURT**
常州龙湖原山合院别墅
- 264 **HARBIN SEA ISLAND VILLA**
哈尔滨海域岛屿墅
- 270 **SHANGHAI GREENLAND QIANGWEI JIULI**
上海绿地蔷薇九里
- 276 **HOP KING · FRAGRANT SEASONS**
合景·香悦四季
- 282 **QINGYUAN YUNSHAN SHIYI**
清远云山诗意

综合建筑 COMPLEX BUILDING

- 290 **WUHAN TOWER**
武汉塔
- 296 **THE WINDOW OF GREENLAND,
ZHENGZHOU**
郑州绿地之窗城市综合体
- 302 **THE COSMOPOLITAN RESORT CASINO**
国际赌城度假村
- 306 **HONGQIAO COMPREHENSIVE
TRAFFIC HUB**
虹桥综合交通枢纽
- 312 **PARK VENTURES — THE ECOPLEX ON
WITTHAYU**
VENTURES 花园
- 316 **PLAN AND DESIGN FOR
LONGTANG HOT SPRING, CHANGZHOU**
江苏常州恐龙谷温泉酒店

THE WORLD 世界建筑事务所精粹 ARCHITECTURAL FIRM SELECTION

OFFICE BUILDING / COMMERCIAL BUILDING / CULTURAL
BUILDING / RESIDENTIAL BUILDING / COMPLEX BUILDING
办公建筑 / 商业建筑 / 文化建筑 / 住宅建筑 / 综合建筑

深圳市博远空间文化发展有限公司 编

PREFACE

PREFACE

In the past few decades, the practice of architectural design has developed towards the postmodern design concept with collage, mixture and coexistence from the modernism on the basis of functionalism and single typology. Rationality turns to be the theme of the development clue of architecture from the modernism stage dominated by the geometric form to the postmodernism stage with multiple mixing symbols. Both the architecture and the social activities of human penetrate and promote each other. The history, economics, philosophy, sociology, etc. have exerted unprecedented influence on the theory and practice of architecture design, which enable the contemporary buildings to obtain the ecological characteristics with multi-elements. The thoughts of architecture such as the phenomenology, semiology, structuralism and deconstruction endow the architecture in this era with symbolic interpretations and create the works for this era.

The innovative and pioneering architects open up new possibilities of the functions, spaces and forms of the architecture with non-traditional innovative spirit and creative practices. The design methodologies based on the information technology, such as the nonlinear design, parametric design and virtual construction, greatly enrich the design measures of the architects, and open the gate towards the architecture in the new era. The unrealized design creations such as non-standardization, structural skin, free form and surreal characteristics under traditional design conditions have displayed themselves with the development of the digital technology, information technology, structure and material technology. The architecture breaks through the restraints from the structure and function, and the shape and space tend to be more complicated and intriguing, displaying the unique characteristics and times imprinting of the contemporary architecture. Extensive excellent cases and architectural practices are provided in this book, which offers architectural cases with different functions, scales, fields and cultural backgrounds. Readers can spy into the influences and expressions of the above mentioned architectural thoughts and design methodology in the excellent architectural creations, thus achieving thought-provoking inspiration and apperception.

Wang He
January 28, 2013

序言

在过去的几十年，建筑设计的实践从功能主义和单一类型学基础上的现代主义向后现代的拼贴、混合、共存并置的设计思想发展。建筑从强调几何形体构成的现代主义时期，到多元符号混合的后现代主义时期，理性成为这一发展线索的主题。建筑与人类的社会活动相互渗透、相互促进。历史学、经济学、哲学、社会学等都对建筑设计理论与实践产生了空前的影响，使当代建筑呈现出多元并存的生态特征；现象学、符号学、结构主义、解构主义等建筑思潮都给这个时代的建筑赋予了标志性的注释，并创造出属于这个时代的作品。

勇于创新 and 开拓的建筑师以颠覆传统的创新精神和创作实践，开拓了建筑功能、空间、形式的新可能。非线性设计、参数化设计、虚拟建造等后工业时代以信息技术为基础的设计方法论极大地丰富了建筑师的设计手段，打开了通向新时代建筑的大门。非标准化、结构性表皮、自由形体、超现实的特征等在设计条件下难以实现的设计创作，随着数字技术、信息技术、结构与材料技术的发展，一一呈现在世人面前，建筑自身突破了结构与功能的约束，造型与空间更趋于复杂与耐人寻味，表现出当代建筑独有的特征和时代印记。

本书提供了大量的优秀范例和建筑实践，呈现了不同功能、不同规模、不同地域和文化背景的建筑案例。读者可以从中窥探到以上建筑思潮和设计方法论在优秀建筑创作中的影响与展现，并从中得到思考性的启发与感悟。

王禾

2013年1月28日

序言

目 录 CONTENTS

办公建筑 OFFICE BUILDING

- 008 **WUHAN CENTER**
武汉中心
- 014 **EOS—MICROSOFT EUROPE HEADQUARTERS OFFICE COMPLEX**
EOS——微软欧洲总部办公大楼
- 020 **SOUTH NINGBO BUSINESS DISTRICT**
宁波南部商务区
- 026 **JINSHANGU CREATIVE OFFICE PARK**
金山谷创意产业园
- 030 **CHEUNG KONG CENTER**
长江集团中心
- 036 **SHENZHEN LOGAN CENTURY PLAZA**
深圳龙光世纪大厦
- 042 **SHANGHAI HUANGPU CENTER**
上海黄浦中心
- 050 **XI'AN TELEVISION BROADCASTING CENTER**
西安广播电视中心
- 058 **JINAN HANYU FINANCIAL CENTER**
济南汉峪金融中心
- 064 **JIANGXI NANCHANG INDUSTRIAL PARK OF YONYOU GROUP**
江西用友集团南昌产业园
- 070 **TWO E-COM CENTER**
两个电子商务中心
- 076 **TEMPO SCAN TOWER**
TEMPO SCAN TOWER
- 082 **HONGQIAO AIRPORT TECHNOLOGY**
虹桥临空科技产业楼
- 086 **EXALTIS TOWER AT LA DÉFENSE**
拉德芳斯 Exaltis 大厦

商业建筑 COMMERCIAL BUILDING

- 094 **TAIPEI GALLERY**
台北艺廊
- 100 **CROWNE PLAZA SHENYANG INTERNATIONAL**
沈阳国际皇冠假日
- 106 **ZHENGZHONG GOLF YINXIU SHANJU HOTEL, SHENZHEN**
深圳正中高尔夫隐秀山居酒店
- 114 **MAOYE TIMES PLAZA**
茂业时代广场
- 122 **GUANGZHOU SOUTH LAKE HOTEL**
广州南湖宾馆
- 128 **EXPO INTERCONTINENTAL HOTEL**
世博洲际酒店
- 134 **CHINA HUASHUIWAN RESORT AND HOTSPRING SPA**
中国花水湾度假酒店及温泉水会
- 140 **TAIKOO HUI MIXED-USE DEVELOPMENT**
太古汇
- 146 **BEGONIA BAY INTERCONTINENTAL RESORT HOTEL**
海棠湾洲际度假酒店
- 152 **JINAN HANG LUNG PLAZA**
济南恒隆广场



文化建筑 CULTURAL BUILDING

- 160 **MERCEDES-BENZ ARENA**
梅赛德斯奔驰文化中心
- 166 **HONG KONG LINGNAN UNIVERSITY COMMUNITY COLLEGE**
岭南大学社区学院
- 174 **SHANGHAI EXPO CENTER**
世博中心
- 178 **CAPITAL NEW AIRPORT HOTEL BEIJING**
北京新国际机场酒店
- 184 **LIBRARY OF PUBLIC INFORMATION**
公共资讯图书馆
- 190 **HUNYA CHOCOLATE MUSEUM**
宏亚巧克力博物馆
- 196 **HUADU DONGFENG STADIUM**
花都东风体育馆
- 202 **CHILDREN'S PALACE AND LIBRARY IN BAOTOU CITY**
包头市少年宫、图书馆
- 208 **XU XIAKE EXPO PARK**
徐霞客旅游博览园
- 214 **WHITE SAND SHORE AND VISITOR CENTRE**
白沙湾海水浴场旅客服务中心
- 218 **THE GRADUATE APARTMENT OF TONGJI UNIVERSITY**
同济大学研究生公寓
- 226 **SHANDONG PROVINCIAL HOSPITAL EASTERN DISTRICT**
山东省立医院东院区
- 230 **YINCHUAN CULTURE AND ART CENTER**
银川文化艺术中心
- 234 **SHANGHAI WORLD EXPO THEME PAVILIONS**
中国 2010 年上海世博会主题馆
- 240 **GUANGZHOU ASIAN GAMES HALL**
广州亚运馆

住宅建筑 RESIDENTIAL BUILDING

- 248 **THE RIVERSIDE — EAST PARK**
山水文园——东园
- 254 **SHANGHAI MINI MANSION**
上海 MINI 公馆
- 258 **LONGHU ORIGINAL MOUNTAIN VILLA CLOSE COURT**
常州龙湖原山合院别墅
- 264 **HARBIN SEA ISLAND VILLA**
哈尔滨海域岛屿墅
- 270 **SHANGHAI GREENLAND QIANGWEI JIULI**
上海绿地蔷薇九里
- 276 **HOP KING · FRAGRANT SEASONS**
合景·香悦四季
- 282 **QINGYUAN YUNSHAN SHIYI**
清远云山诗意

综合建筑 COMPLEX BUILDING

- 290 **WUHAN TOWER**
武汉塔
- 296 **THE WINDOW OF GREENLAND, ZHENGZHOU**
郑州绿地之窗城市综合体
- 302 **THE COSMOPOLITAN RESORT CASINO**
国际赌城度假村
- 306 **HONGQIAO COMPREHENSIVE TRAFFIC HUB**
虹桥综合交通枢纽
- 312 **PARK VENTURES — THE ECOPLEX ON WITTHAYU**
VENTURES 花园
- 316 **PLAN AND DESIGN FOR LONGTANG HOT SPRING, CHANGZHOU**
江苏常州恐龙谷温泉酒店



办公建筑 OFFICE BUILDING

Office building nowadays occupies a pretty high amount only second to residential house. Since we have entered a wholly new era of information due to the endless stream of emerging high-tech in the 21st century. The development of office building, as one of the main places to collect and handle information, is beyond comparison. According to an estimate, over a half of our population will work in office buildings in the middle of this century. So from this point of view, 21st century is "the century of office building".

As a kind of place to collect, handle and generate various administrative, scientific and commercial information, office building belongs to the infrastructure construction for social reproduction. It is a kind of place where information is produced, as well a place where we live. So the comfort level of the office directly affects the working efficiency of the staff. That is the reason why the requirement of a humanized design of a modern office building is exalted. Hence it is demanded that the design of the inner space of an office building should be as favorable to staff's working mind and behavior as possible. Similarly, a balance between the elegant, cozy and humanized outer and inner spatial environment is required. All these will greatly enhance the physical and psychological development of the staff, as well as the working efficiency.

Meanwhile, the spatial construction of office building is varying to adapt new official functions and new requirements for a higher comfort level. It is not only a request for a reasonable schedule of traffic routes, but also a result of spatial organization with a general consideration of elements such as aesthetics and technique. A mature and independent development system of office building construction is now gradually taking shape. Architects of office building are continuously seeking for brand-new design methods and architectural styles to capture the spirit of the era, and to create office works with the most era features and modern science and techniques.

It is gradually an important premise of architectural design to develop sustainably, environment-friendly and energy-saving. How to maximize the function without the negligence of saving energy, and to make it a goal to be environment-protecting are among the key considerations of the architects. At present, the status of office building in the city is getting more and more important as its quality and quantity are increasing. It has become a significant part of the skyline of the city. Some momentous office buildings are even considered as landmarks of the city.

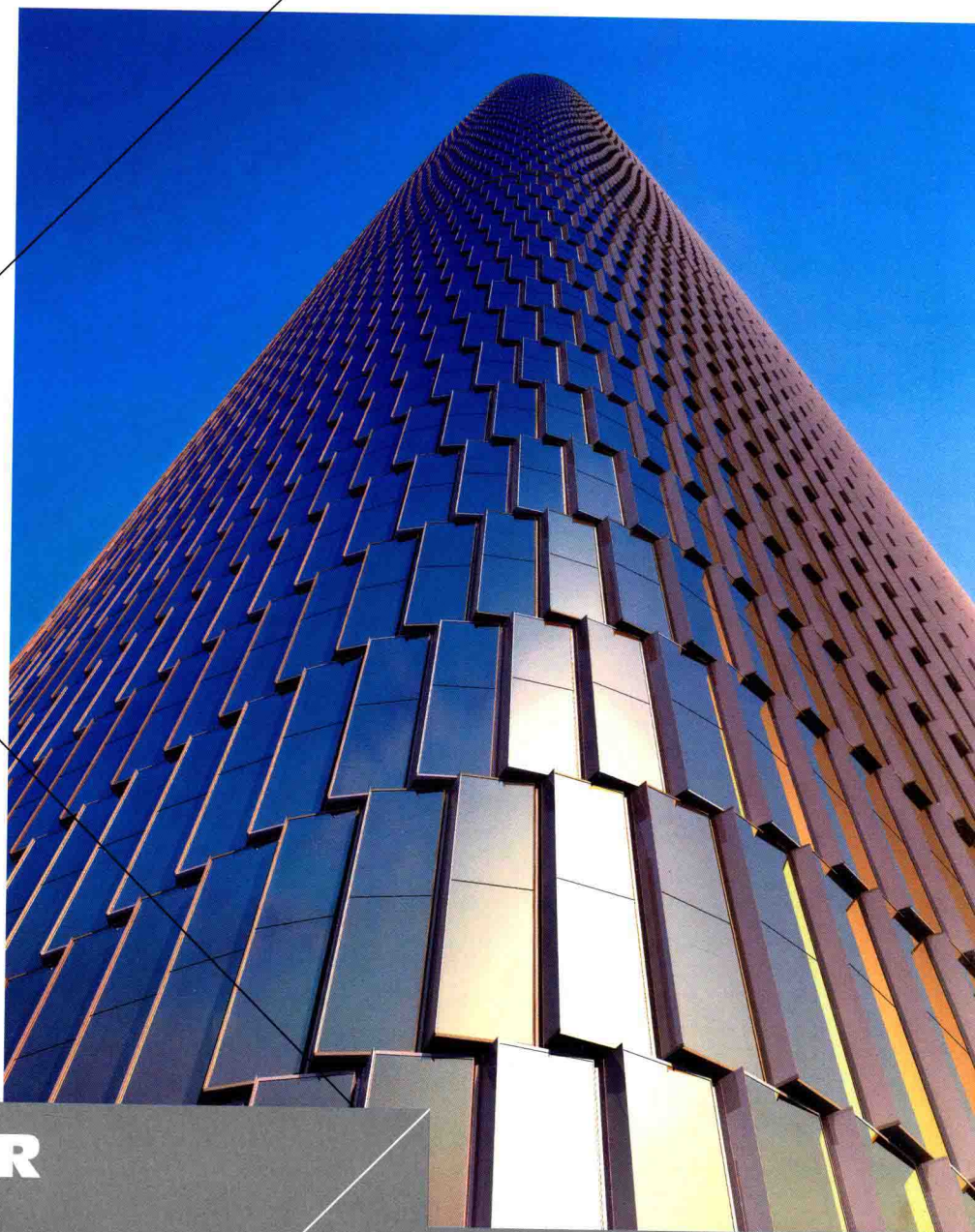
目前办公建筑已成为除住宅外，数量最多的一类建筑。在高新技术层出不穷的21世纪，人们进入了崭新的信息时代，办公建筑作为收集和处理信息的主要场所之一，其在信息时代的发展与过去已不可同日而语。据预测，到21世纪中叶，将有一半以上的人口在办公建筑里工作。从某种角度来讲，21世纪可谓是“办公楼的世纪”。

作为收集、处理和产生各种行政、科研、商务信息的场所，办公建筑是社会再生产的基础性建筑。办公室既是信息生产的场所，又是人们生活的场地，其环境的舒适度直接影响着员工的办公效率，因此，当代办公建筑设计对办公场所的人性化要求也逐渐提高，这就要求办公建筑内部空间的环境向着最有利于人员办公心理和行为的方向发展，同时要兼顾内外空间环境的美观、舒适，充满人性关怀，这些对员工身心健康和工作效率的提高都能起到重要的促进作用。

同时，办公建筑的空间构成也在不断适应新的办公功能和舒适性要求的变化，这不仅是合理安排交通路线的要求，也是综合考虑审美、技术等多种因素后的空间组合的结果。办公建筑已逐渐形成了成熟而独立的发展体系，建筑师在不断寻求新的设计方法、建筑形式，以捕捉时代精神，创造出最具有时代特色，能够显示现代科技的办公建筑作品。

可持续发展和绿色环保理念逐渐成为建筑设计的重要前提，如何在实现功能最大化的同时实现节约能源、绿色环保的目标，成为建筑师在设计办公建筑时考虑的重点之一。如今，随着办公建筑数量的增加和品质的提升，它在城市中的地位也愈加重要，成为城市天际线的重要组成部分，尤其是一些重要的办公建筑，已作为城市地标而成为城市的象征。





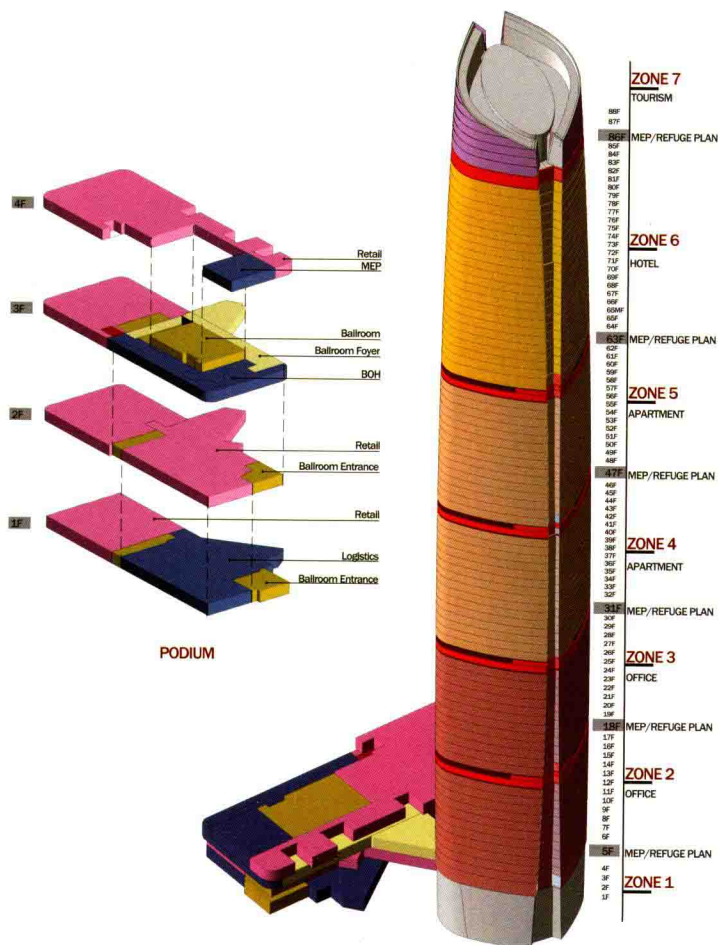
WUHAN CENTER 武汉中心

Architects: ECADI
Location: Wuhan, China
Site area: 28,100 m²
Gross floor area: 355,760 m²

设计机构：华东建筑设计研究院
项目地点：中国武汉市
总用地面积：28 100 平方米
总建筑面积：355 760 平方米

The project is located in the southwest corner of central business district of Wuhan, facing the central square on the northeast and east, the hotel site on the west, the water park on the south. The project is the first and the most important component to implement the development strategy in CBD core area. Wuhan Center tower is located in the middle site near to the intersection of the city roads. The podium and city square are arranged at the north and east in tower preposed and podium postposed pattern. The tower preposition can maximally use the both sides of the city road to give convenient traffic flows and pedestrian flows. The tower as a distinct landmark is directly toward the Mengze Lake. The commercial space encloses the Citizen Square by podium postposition to lead a direct contact with city public space. The large podium space is integrated with underground hub to improve the efficiency of the development. As for the form, Wuhan Center is like a sailing boat with full strengths and desires, marching forward courageously in the economic waves.



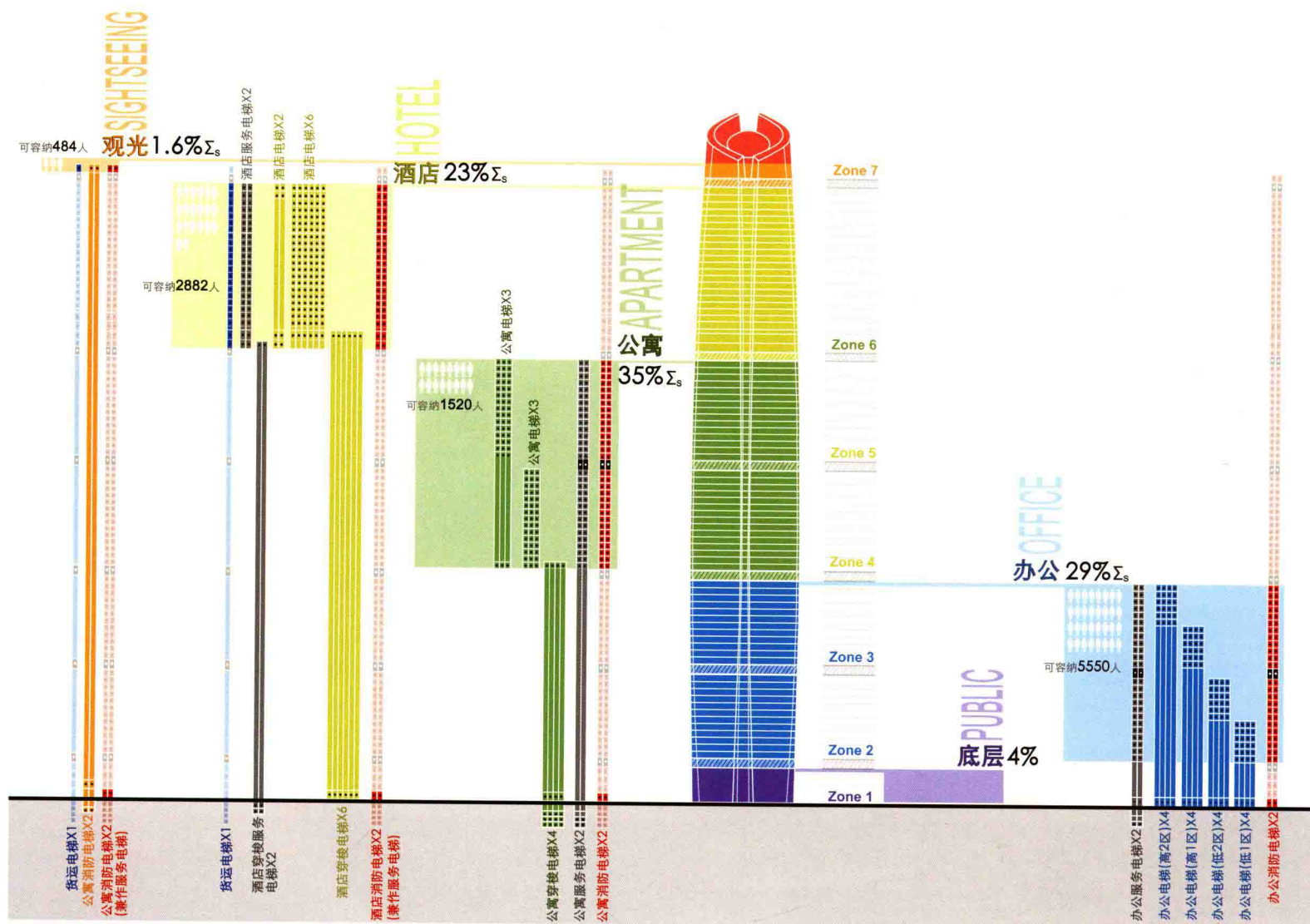


Analysis 1 分析图 1



项目位于武汉中心商务区西南角，其东北面、东面为中心区广场，西面为旅馆用地，南面为水景公园。该项目是实施 CBD 核心区开发战略的第一个项目，也是最重要的一个项目。

武汉中心塔楼位于用地中部，靠近城市道路交叉口，裙房和城市广场布置在用地北侧和东侧，采用塔楼前置、裙楼后置的模式。塔楼前置可以最大化利用基地两边的城市道路，便于组织机动车流和人流；塔楼直接朝向梦泽湖，标志性强烈。裙楼后置使商业空间围合市民广场，与城市公共空间直接联系；裙楼大空间与地下枢纽站空间整合，提高开发效率。在造型上，武汉中心状若帆船，寓意满载希望与力量，在经济的浪潮中乘风破浪、勇往直前。



Analysis 2 分析图 2