

世界建筑 13

World Architecture 13

# Urban Complex

## 城市综合体 II

佳图文化 编



世界建筑 13

World Architecture 13

# Urban Complex

## 城市综合体 II

佳图文化 编



华南理工大学出版社  
SOUTH CHINA UNIVERSITY OF TECHNOLOGY PRESS

·广州·

## 图书在版编目 (CIP) 数据

世界建筑. 13, 城市综合体 II: 英文 / 佳图文化编. —广州: 华南理工大学出版社, 2014. 3  
ISBN 978-7-5623-4078-2

I. ①世… II. ①佳… III. ①城市规划—建筑设计—作品集—世界 IV. ① TU206

中国版本图书馆 CIP 数据核字 (2013) 第 256199 号

## 世界建筑 13: 城市综合体 II

佳图文化 编

---

出 版 人: 韩中伟

出版发行: 华南理工大学出版社

(广州五山华南理工大学 17 号楼, 邮编 510640)

<http://www.scutpress.com.cn> E-mail: [scut13@scut.edu.cn](mailto:scut13@scut.edu.cn)

营销部电话: 020-87113487 87111048 (传真)

策划编辑: 赖淑华

责任编辑: 李彩霞

印 刷 者: 广州市中天彩色印刷有限公司

开 本: 889mm×1194mm 1/16 印张: 17

成品尺寸: 245mm×325mm

版 次: 2014 年 3 月第 1 版 2014 年 3 月第 1 次印刷

定 价: 298.00 元

---

版权所有 盗版必究 印装差错 负责调换

# Preface

The book brought together many types of Urban Complexes, such as shopping center complex, CBD complex, theme complex, designed by outstanding firms and well-known architects from France, Germany, U.S., Italy, Spain, India, Turkey, Slovenia, Ukraine, China and other countries. With the most extensive perspective and years of experience, they present their works in different perspectives flexibly, such as design concept, layout, facade design, function deployment, detail treatment and tackling big issues.

Sketches, plans, renderings, sections, schedule drawings and detail drawings are selected ingeniously. All of them are recent new works, to give the architects and design amateurs a rare reference.



# Contents

---

## Shopping Center Complex

BUYAKA	002
Airport Mall	020
Fashion Shopping Center	024
Jesolo Magica Retail Centre	028
Cascade commercial center	032
City Point	044
"Columbia Plaza" Complex	048

## CBD Complex

Lanyue Bay West Convention Centre & Mixed Development	068
Barwa City Retail Center	080
Wuxi Master plan: Mixed-use Building Complex	102
Vanke Foshan	106
Daxing Mixed-use Development	116
Shanghai Hongqiao Paradise Walk	126

---

The Suzhou Diaries	138
Lerthal Center	150
Summer International Retail and Entertainment Centre	160
Sliced Porosity Block	170

## Theme Complex

Beton Hala Waterfont Center	186
Shanghai International Cruise Terminal Master Plan	192
Beko Master plan	206
Dorobanti Tower	210
Eleftheria Square and the Surrounding Area	214
The Urban Crossing	218
Cairo Expo City	224
Roca London Gallery	234
Central St. Giles Court	252

---

Green space  
sustainability  
ecological and Saving



## Keywords

# Fragmentation Shedding of Skin Continuity

## BUYAKA

Location: Umraniye / Istanbul

Investor Group: Artell-Koytur A.S.

Architects: Uras+Dilekci Architects / Durmus Dilekci - Emir Uras

Project Team: Salih Kucuktuna, Fikret Sungay, Handan Akbudak, Evren Alpay, Aylin Ayvaz, Elvan Dervisoglu

Project Area: 44,000 m<sup>2</sup>

Construction Area: 248,000 m<sup>2</sup>

Construction date: 2007 - 2012

Photography : Murat German

Buyaka is located in the Asian part of Istanbul, Umraniye district. This district is one of the subcenters of trade and residential zones.

Buyaka was designed without using a thematic overlay. The design approach portrayed an honest intent to do with its program as a mixed-use building. It attempted to reflect a sense of integrity with its formal language, emphasizing that good design doesn't need thematic overlays.

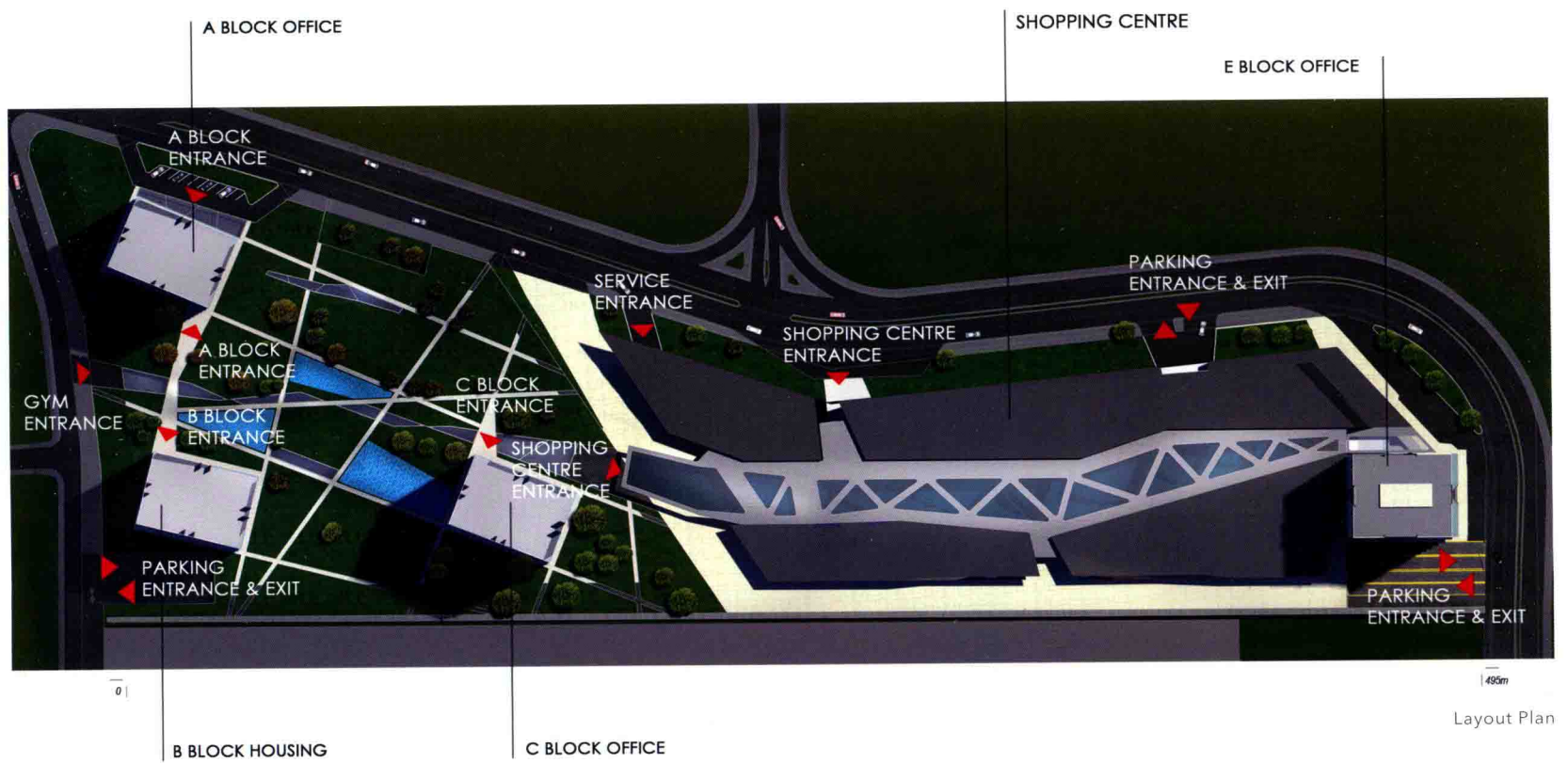
In architecture, meaning and content has been transposed. We are living in an era where the authentic has lost its importance and has been overruled by the superficial and fake realities have become the norm. Fake, theatrical facades are applied to buildings without a relationship with function and program. Materials mimic other materials with the excuse of cost effectiveness, creating a potpourri of postmodern clutter. What does the building say? Who is the user? It is an open question.

This potpourri of formal clutter has overtaken the fundamental role of architecture and architecture has become more of a pictorial race of artisans where origin and authentic notions have disintegrated. Trying to design purposeless projects for developers without identified users has become a big challenge for architects. Amongst this conversation Buyaka stands at a place speaking of architecture for the sake of architecture. It takes its references from itself and creates a formal dialogue unique to itself.

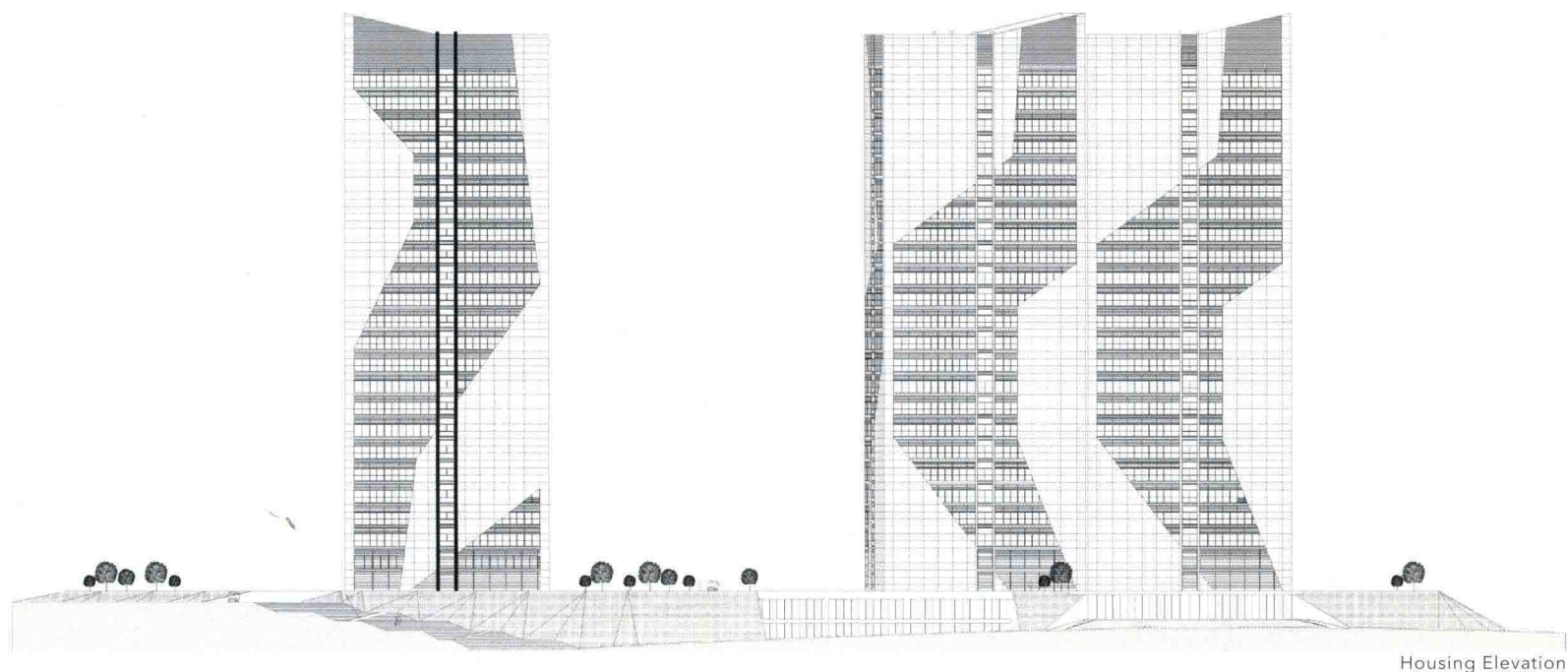








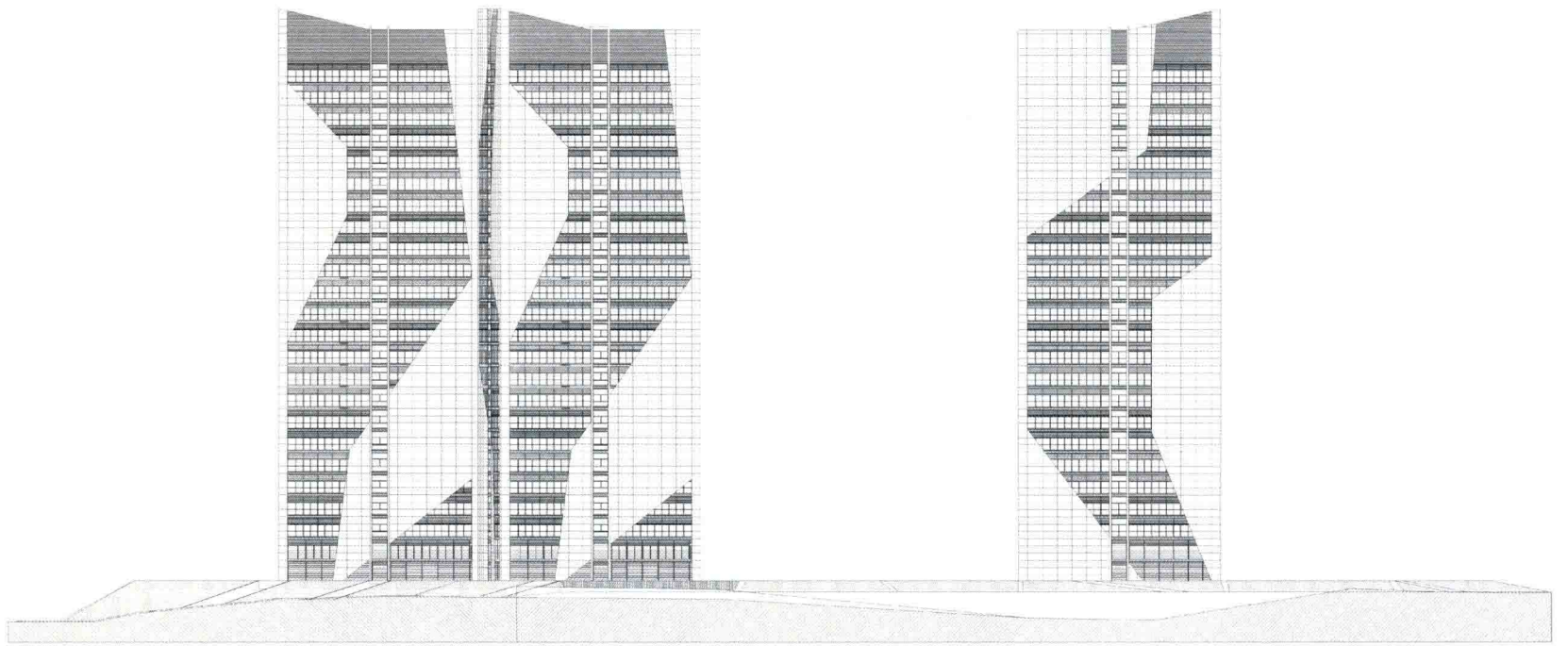




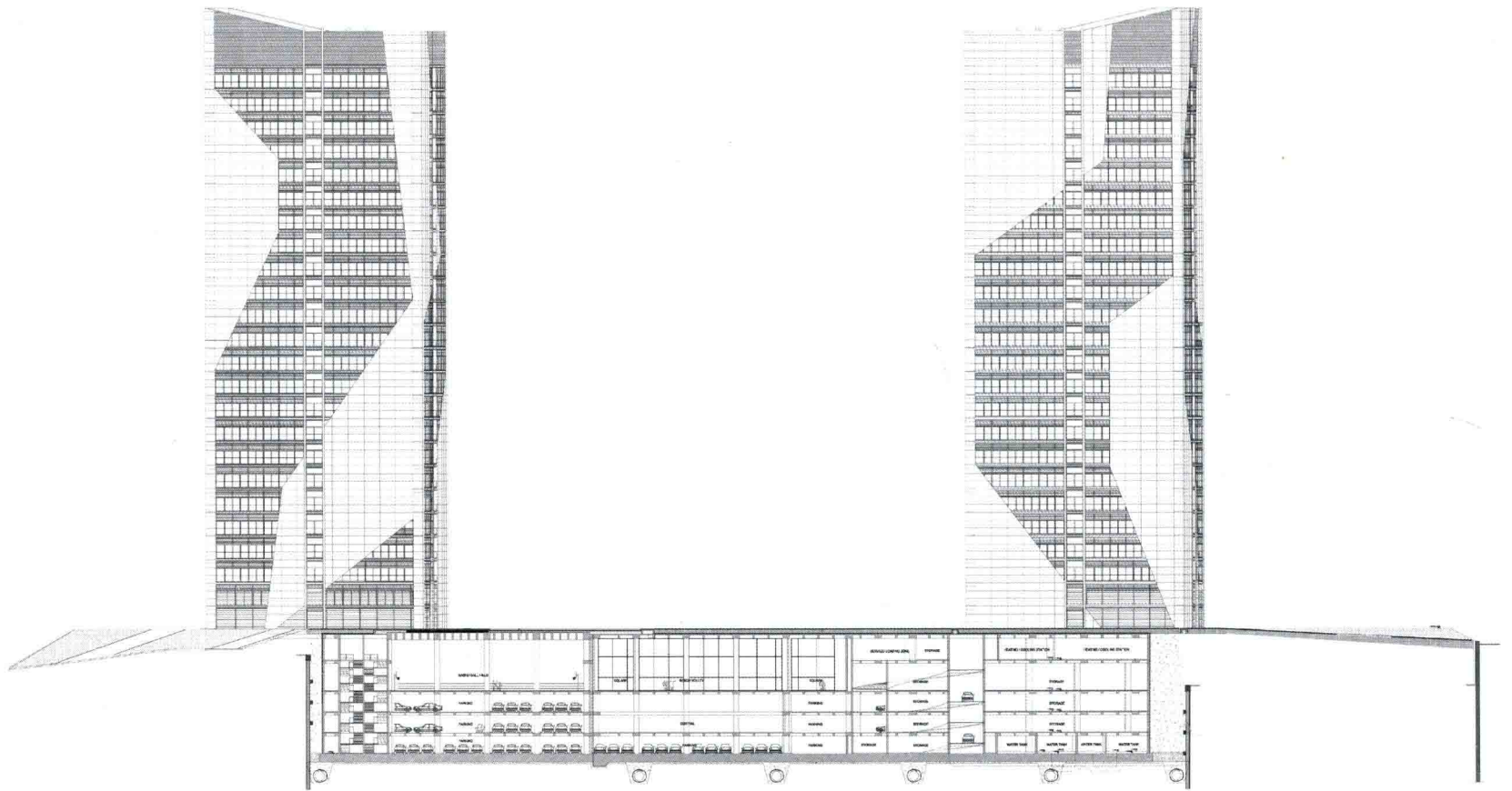
Housing Elevation



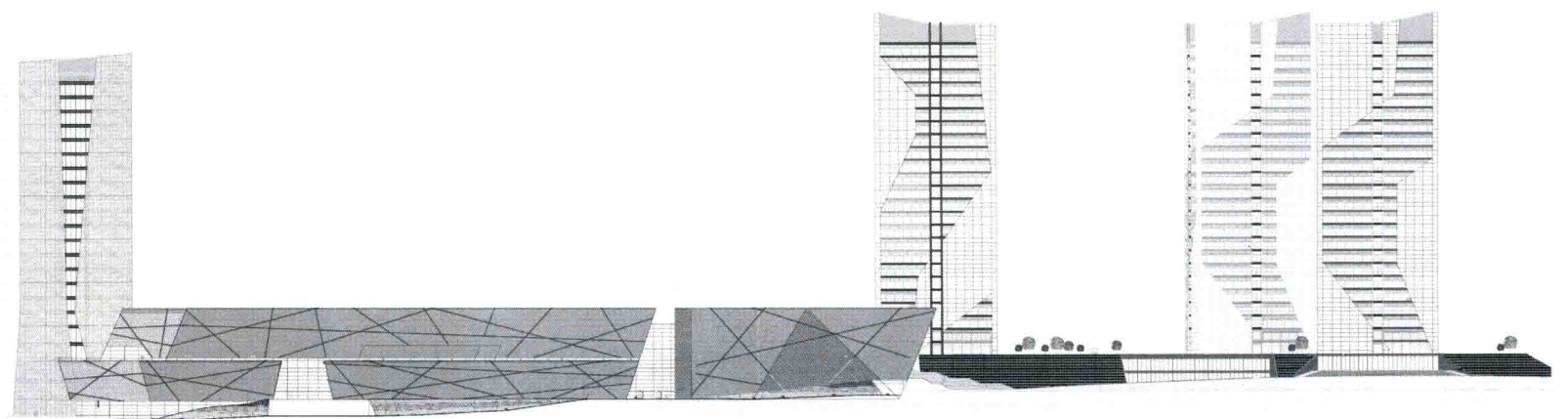




Housing Elevation



Housing Section



Elevation

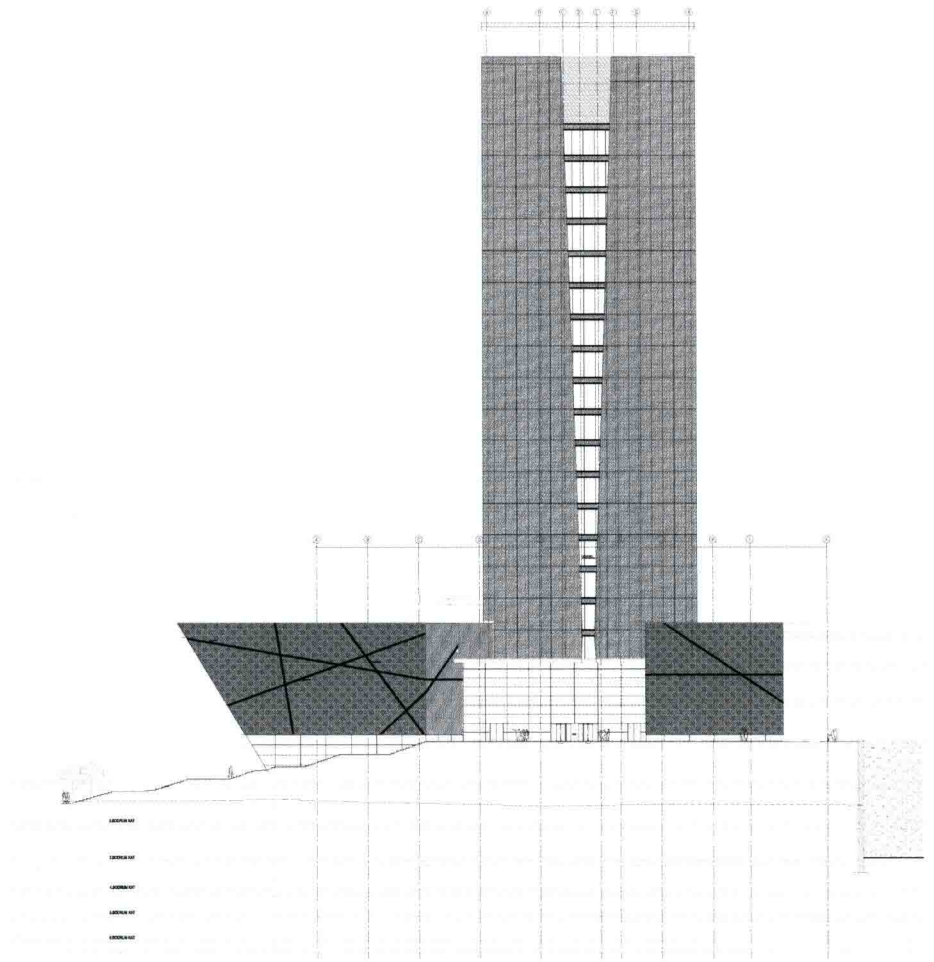


## Concepts and Thoughts

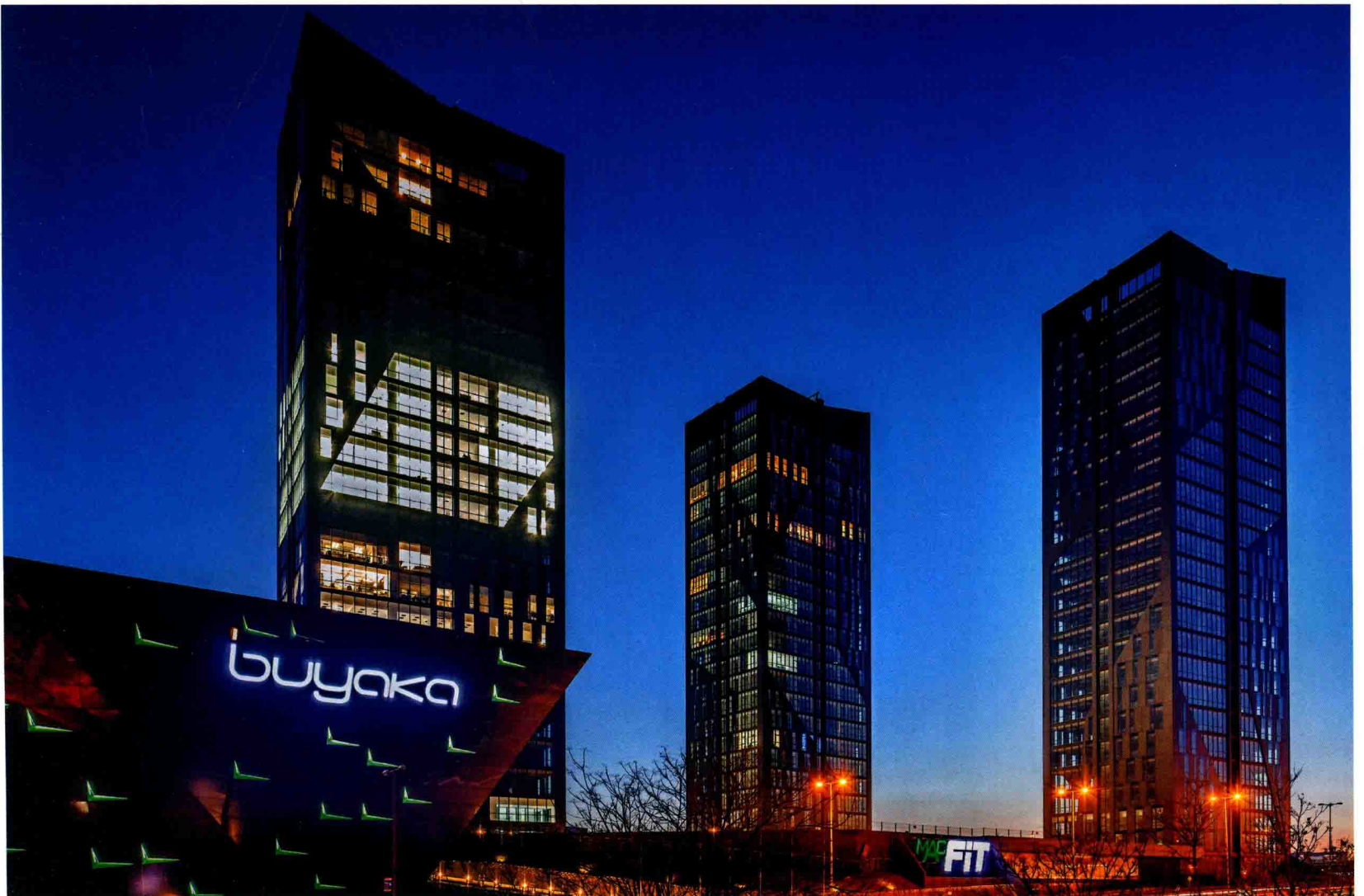
**Fragmentation:** Architects' main approach was to attempt to break the maga function boxes that are commonly seen in cities today into a more friendly and inviting formal language. The Project consists of several horizontal and vertical prisms in dialog with each other and their environment.

**Shedding of skin:** The transformation of function is reflected formally in a gradual change of material. One material sheds another to become and say something else. The play between dark dull surfaces and light shiny surfaces creates depth in the appearance of the building. The general black posture emphasizes the contours of the building against the blue-gray İstanbul sky.

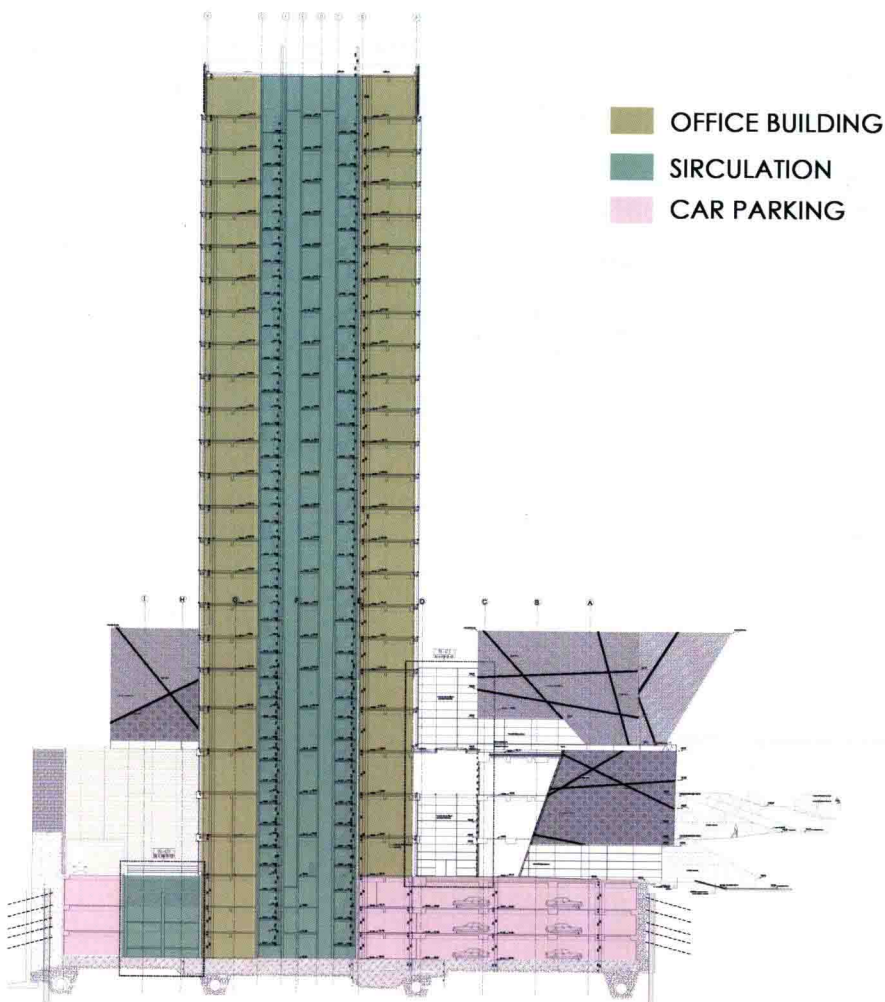
**Speed:** As the building is situated by a motorway junction, the perception of the building is cinematic. One mostly perceives the building by moving around it by car. This cinematic experience choreographed by play and juxtaposition of form and material.



Elevation







Section 1-1

**Continuity:** The Structural dynamic is seamlessly reflected inside-out and outside-in, creating sculptural, glacier like forms that speak with the fast moving surroundings.

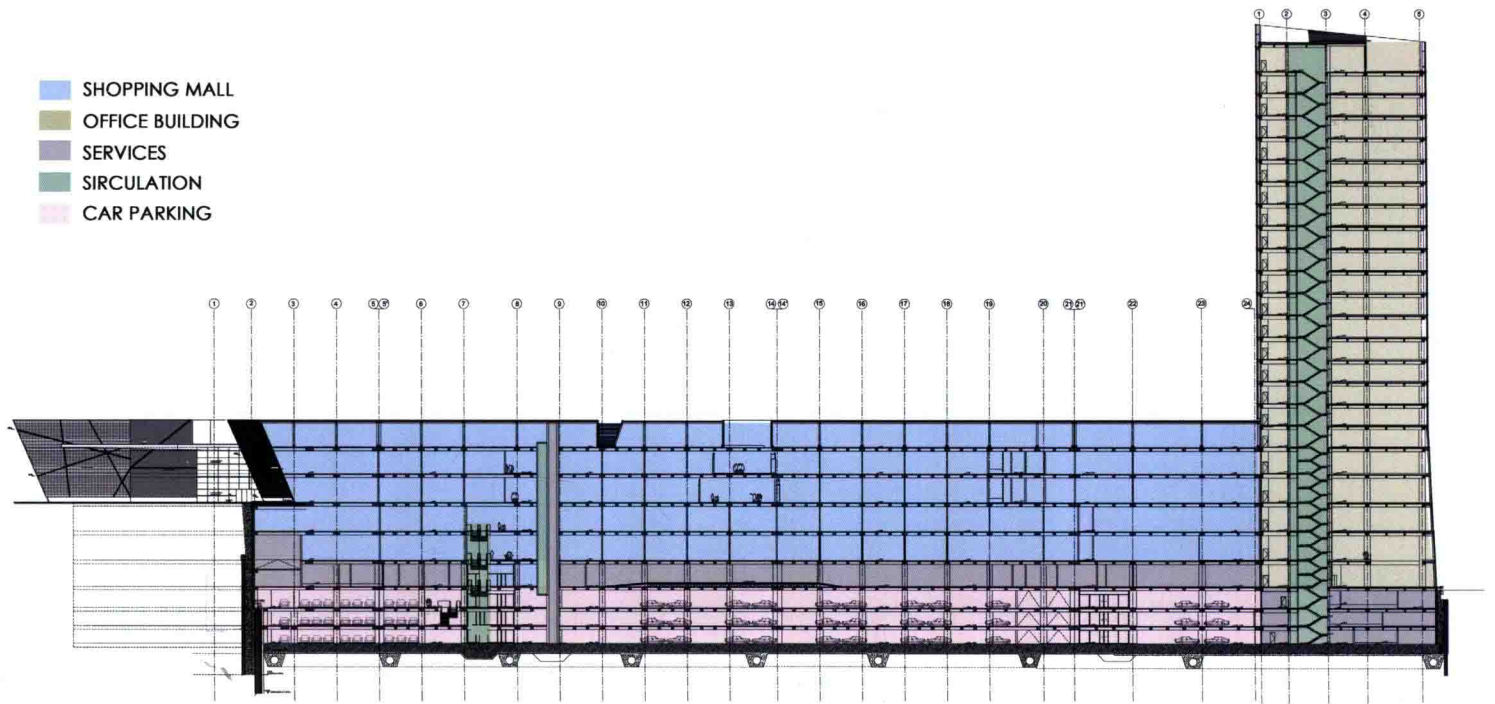
**Force projection:** Buyaka is a power center acting as a hub, taking impulses and also feeding the near environment without alienating It serves as a piece of the whole without getting lost in the popular identity crises of today.

#### Functions

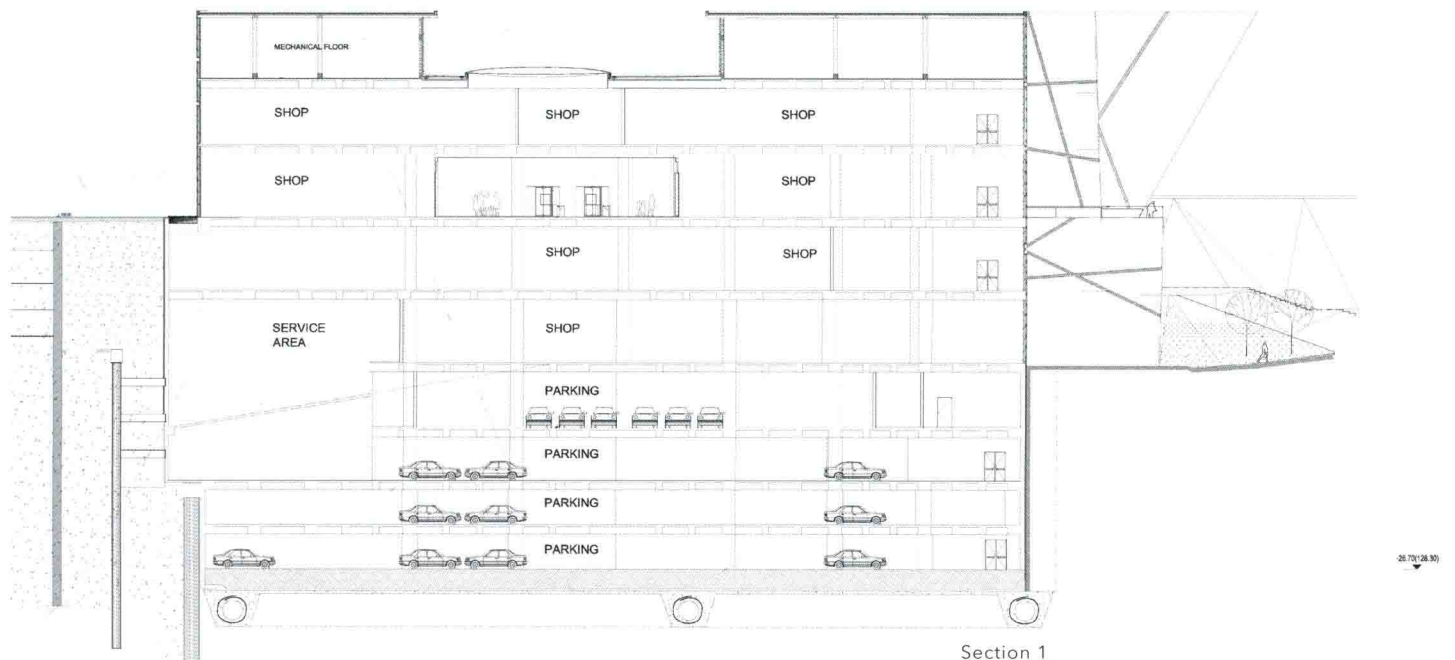
Buyaka involves a shopping mall, three office buildings and a residential building. The shopping center connects a 21-storey office building with other two 23-storey office buildings and a 23-storey residential building with a unique atmosphere with its several prisms.

There are two kind of main materials for facades. Composite panels were used for different types of shopping centers and glass curtain walls were used for different types of office and residential buildings.

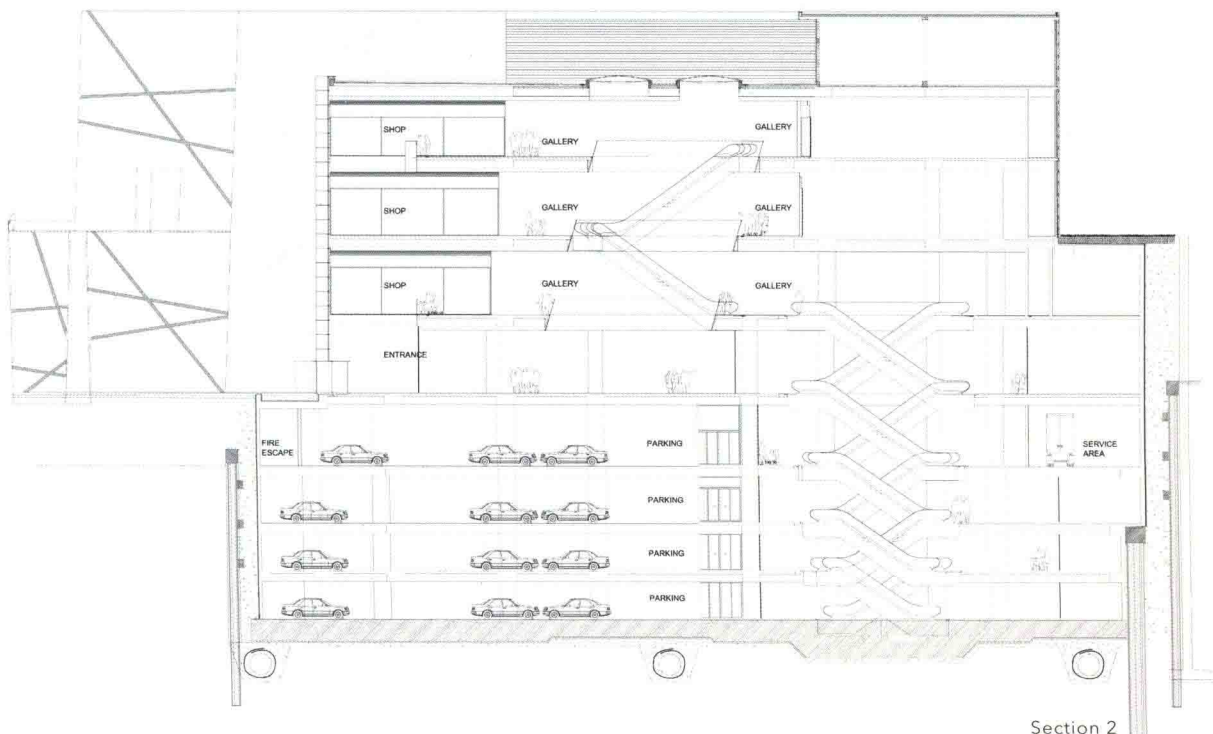
- SHOPPING MALL
- OFFICE BUILDING
- SERVICES
- SIRCULATION
- CAR PARKING



Section 2-2

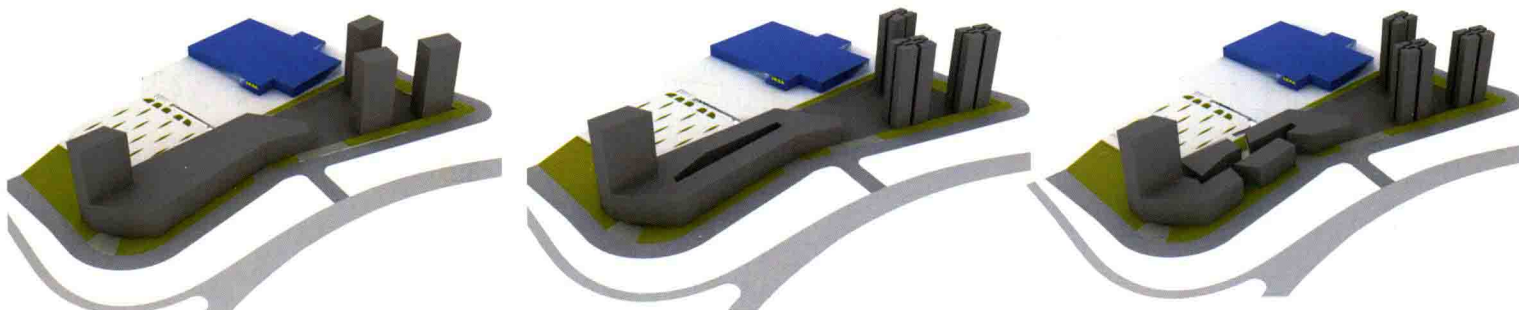
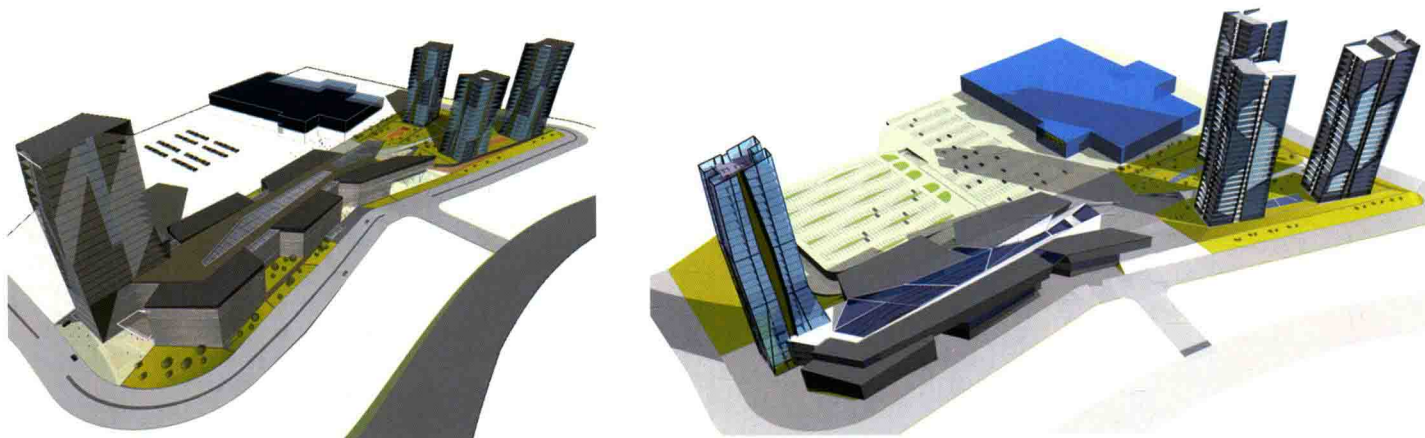
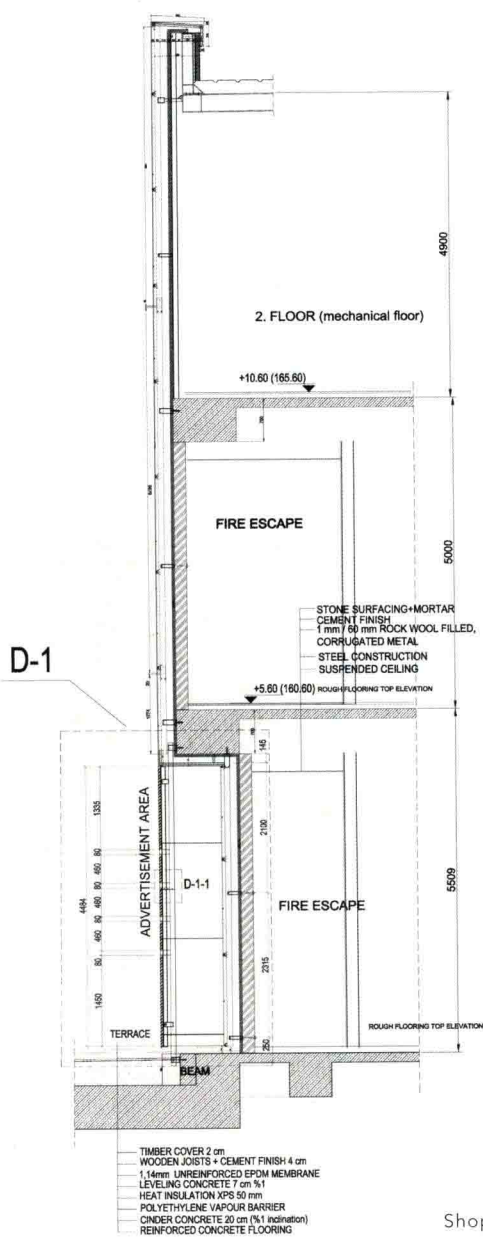


Section 1

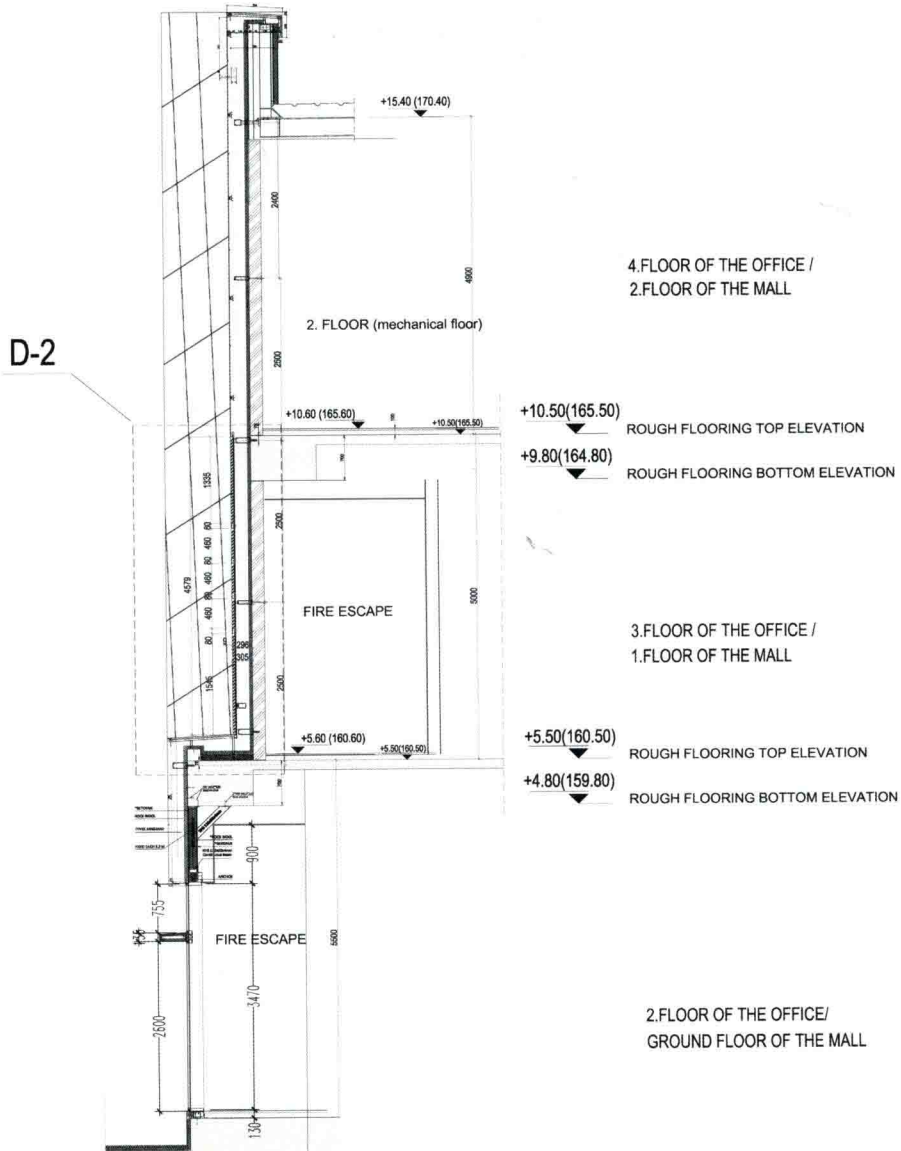


Section 2



[illegible][illegible]

Section 1-1  
Shopping Mall Facade Detail

Section 2-2  
Shopping Mall Facade Detail



