

CREATIVE
DIAGRAM
IN **创意分析** ——
图解景观与规划 II
LANDSCAPE & PLANNING II

丁奇 编

江苏凤凰科学技术出版社

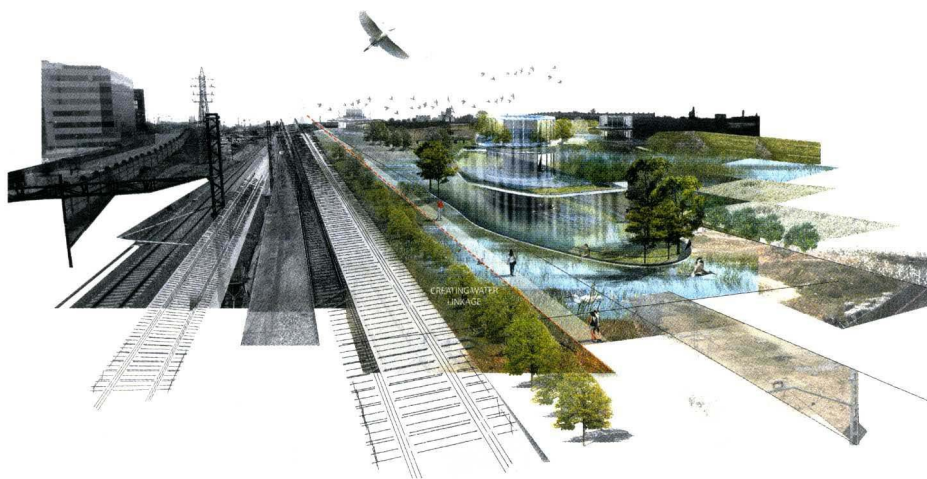
创意 分析

——图解景观与规划

CREATIVE DIAGRAM IN
LANDSCAPE & PLANNING II



丁奇 编



江苏凤凰科学技术出版社

图书在版编目 (C I P) 数据

创意分析. 图解景观与规划. 2 / 丁奇编. -- 南京 :
江苏凤凰科学技术出版社, 2015.4
ISBN 978-7-5537-2137-8

I. ①创… II. ①丁… III. ①景观规划-景观设计-
设计图 IV. ①TU2②TU986.2

中国版本图书馆CIP数据核字(2013)第235002号

创意分析——图解景观与规划 II

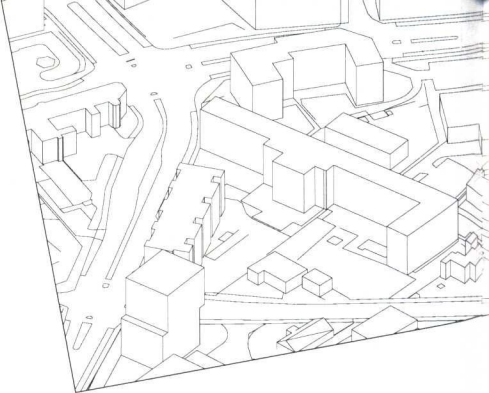
编 者 丁奇
项 目 策 划 凤凰空间 / 胡中琦 曹蕾
责 任 编 辑 刘屹立
特 约 编 辑 曹蕾

出 版 发 行 凤凰出版传媒股份有限公司
江苏凤凰科学技术出版社
出版社地址 南京市湖南路1号A楼, 邮编: 210009
出版社网址 <http://www.pspress.cn>
总 经 销 天津凤凰空间文化传媒有限公司
总经销网址 <http://www.ifengspace.cn>
经 销 全国新华书店
印 刷 北京利丰雅高(长城)印刷有限公司

开 本 787 mm×996 mm 1 / 16
印 张 19
字 数 200 000
版 次 2015年4月 第1版
印 次 2015年4月 第1次印刷

标 准 书 号 ISBN 978-7-5537-2137-8
定 价 268.00元 (USD: 50.00)

图书如有印装质量问题, 可随时向销售部调换 (电话: 022-87893668)。



公共空间景观 Public Landscape

006

莫斯科扎良奇耶公园

ZARYADYE PARK

/ 008

EUROPAN 11 获奖项目

EUROPAN 11 WINNING ENTRY

/ 012

PIAZZA D'ARMI 城市公园

PIAZZA D'ARMI URBAN PARK

/ 018

6970+城市公共空间设计

6970+

/ 026

平行网络空间

PARALLEL NETWORKS

/ 030

转被动为积极的空间网络

PASSIVE PERFORMATIVE

/ 036

假日海湾公园

FESTIVAL BAY PARK

/ 040

钟楼滩

CLOCK TOWER BEACH

/ 052

约克维尔景观

LANDSCAPE VISION FOR BAY-YORKVILLE

/ 056

网络式空间

NETWORK

/ 060

赫雷夏蒂克街公园

KRESCHATYK PARK

/ 066

城市森林——西雅图城市设施

URBAN FOREST—SEATTLE URBAN INTERVENTION

/ 074

重建滨水区——基辅城市景观

RECLAIMING THE SHORE—URBAN LANDSCAPING IN KYIV FOR THE EURO-2012

/ 080

安阳之巅

ANYANG PEAK

/ 086

彩虹

RAINBOW

/ 092

人群中的我

HIGH FIVE CROWD

/ 098

规划

Landscape Planning

100

华谊兄弟城发展可行性研究

HBT URBAN FEASIBILITY STUDY

/ 102

沿河而下

DOWN BY THE RIVER

/ 110

城市潮流

URBAN CURRENT[S]

/ 112

景观循环

LANDSCAPE LOOP

/ 120

CONTENTS

目录

地拉那岩石 / 126
TIRANA ROCKS

阿尔梅勒城市结构2030愿景 / 130
ALMERE STRUCTURE VISION 2030

模拟空间 / 134
SIMULATION SPACE

LEEWARDEN住区规划——城市中的睡莲 / 142
LEEWARDEN HOUSING——URBAN WATER LILIES

挪威奥斯陆之环 / 156
OSLO RINGS, NORWAY

拼接城市总体规划方案 / 166
PATCHWORK CITY MASTERPLAN

龙山公园的重建 / 176
THE REGENERATION / YONGSAN PARK

2022花卉节 / 186
FLORIADE 2022

温格市总体规划 / 194
VINGE CITY

基辅岛 / 198
KIEV ISLANDS

蚊州岛(月亮岛)景观修复规划设计 / 208
MOON ISLAND

AMBLESIDE海滨总体规划 / 212
AMBLESIDE WATERFRONT

伊斯坦布尔主题公园 / 218
ISTANBUL THEME PARK

橘城公园综合总体规划 / 228
ORANGE COUNTY GREAT PARK COMPREHENSIVE MASTER PLAN

可持续景观规划
Landscape Element

240

利用参数化设计来进行建筑和城市的设计 / 242
DIGITAL FABRICATION RELATED ARCHITECTURE AND URBAN DESIGN

我的竹林 / 256
MY BAMBOOM

旱地水再生——城市LMWT生态走廊 / 260
LIVING MACHINE WATER TOWER- WATER REGENERATION IN DROUGHT LAND

绿色健康城 / 286
GREEN HEALTH CITY

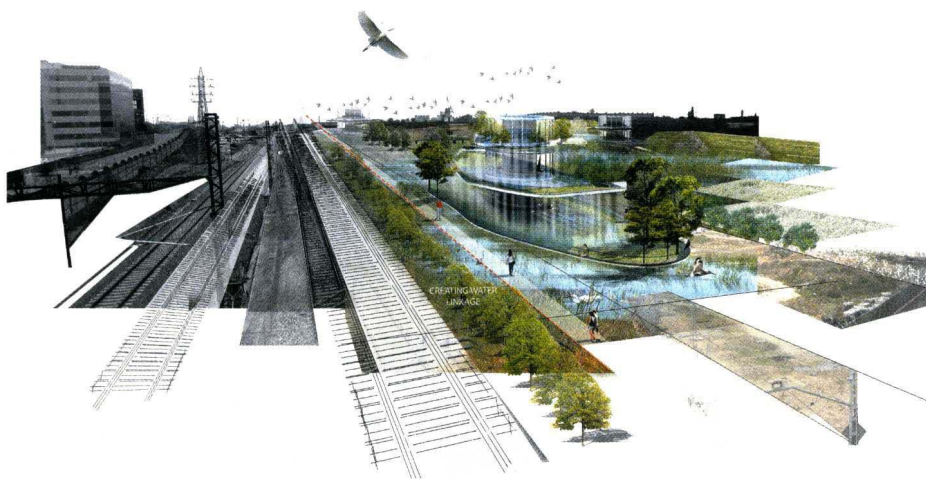
沙漠农业修复——从干地带到多明戈生态社区的转变 / 290
DESERT FARMING MOISTURIZER — TRANSITION FROM DRY LANDS TO DOMINGO ECO-COMMUNITY

创意 分析

——图解景观与规划 II

CREATIVE DIAGRAM IN
LANDSCAPE & PLANNING II

丁奇 编



江苏凤凰科学技术出版社

图书在版编目 (C I P) 数据

创意分析. 图解景观与规划. 2 / 丁奇编. -- 南京 :
江苏凤凰科学技术出版社, 2015.4
ISBN 978-7-5537-2137-8

I. ①创… II. ①丁… III. ①景观规划—景观设计—
设计图 IV. ①TU2②TU986.2

中国版本图书馆CIP数据核字(2013)第235002号

创意分析——图解景观与规划 II

编 者 丁奇
项 目 策 划 凤凰空间 / 胡中琦 曹蕾
责 任 编 辑 刘屹立
特 约 编 辑 曹蕾

出 版 发 行 凤凰出版传媒股份有限公司
江苏凤凰科学技术出版社
出版社地址 南京市湖南路1号A楼, 邮编: 210009
出版社网址 <http://www.pspress.cn>
总 经 销 天津凤凰空间文化传媒有限公司
总经销网址 <http://www.ifengspace.cn>
经 销 全国新华书店
印 刷 北京利丰雅高(长城)印刷有限公司

开 本 787 mm×996 mm 1 / 16
印 张 19
字 数 200 000
版 次 2015年4月 第1版
印 次 2015年4月 第1次印刷

标 准 书 号 ISBN 978-7-5537-2137-8
定 价 268.00元 (USD: 50.00)

图书如有印装质量问题, 可随时向销售部调换 (电话: 022-87893668)。

PREFACE

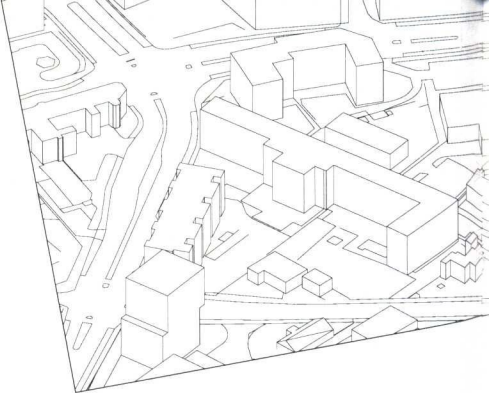
前言

视觉是最直接的获取信息的方式。身处读图时代，如何通过象征或抽象的图解语言形式来概括表达具体的或抽象的设计内容，方便人们直接观察和解读原本的设计内容，将是设计师必须拥有的能力。书中收录国际知名景观与规划设计公司的经典案例，它们使用恰当的表达元素、创新的表达方式，淋漓尽致地展现出设计意图与表达内容，是图解设计的典范之作。

设计的过程就是解决矛盾的过程，对问题的认识会影响到答案的形成。读者能够学会“运用图解简化矛盾、通过分析寻找答案”，是我们编写本书的宗旨。

Vision is the most direct way to obtain information. In the era of "reading pictures", the designers must master the ability to convey the tangible or abstract design ideas through symbolized and metaphysical diagram language, so as to help other people better observe and analyze their designs directly. This book includes around one hundred classic projects from international landscape / planning design firms. These projects, as outstanding examples of diagram designs, manage to show the intention and content of the designs vividly and incisively through appropriate expression elements and creative expression styles.

The design process is the process of resolving problems, and the understanding of the problem will influence the answer. It is our aim to help the readers to simplify the problem with diagrams, and find the answer through analyzing.



公共空间景观 Public Landscape

006

莫斯科扎良奇耶公园

ZARYADYE PARK

/ 008

EUROPAN 11 获奖项目

EUROPAN 11 WINNING ENTRY

/ 012

PIAZZA D'ARMI 城市公园

PIAZZA D'ARMI URBAN PARK

/ 018

6970+城市公共空间设计

6970+

/ 026

平行网络空间

PARALLEL NETWORKS

/ 030

转被动为积极的空间网络

PASSIVE PERFORMATIVE

/ 036

假日海湾公园

FESTIVAL BAY PARK

/ 040

钟楼滩

CLOCK TOWER BEACH

/ 052

约克维尔景观

LANDSCAPE VISION FOR BAY-YORKVILLE

/ 056

网络式空间

NETWORK

/ 060

赫雷夏蒂克街公园

KRESCHATYK PARK

/ 066

城市森林——西雅图城市设施

URBAN FOREST—SEATTLE URBAN INTERVENTION

/ 074

重建滨水区——基辅城市景观

RECLAIMING THE SHORE—URBAN LANDSCAPING IN KYIV FOR THE EURO-2012

/ 080

安阳之巅

ANYANG PEAK

/ 086

彩虹

RAINBOW

/ 092

人群中的我

HIGH FIVE CROWD

/ 098

规划

Landscape Planning

100

华谊兄弟城发展可行性研究

HBT URBAN FEASIBILITY STUDY

/ 102

沿河而下

DOWN BY THE RIVER

/ 110

城市潮流

URBAN CURRENT[S]

/ 112

景观循环

LANDSCAPE LOOP

/ 120

CONTENTS

目录

地拉那岩石 / 126
TIRANA ROCKS

阿尔梅勒城市结构2030愿景 / 130
ALMERE STRUCTURE VISION 2030

模拟空间 / 134
SIMULATION SPACE

LEEWARDEN住区规划——城市中的睡莲 / 142
LEEWARDEN HOUSING——URBAN WATER LILIES

挪威奥斯陆之环 / 156
OSLO RINGS, NORWAY

拼接城市总体规划方案 / 166
PATCHWORK CITY MASTERPLAN

龙山公园的重建 / 176
THE REGENERATION / YONGSAN PARK

2022花卉节 / 186
FLORIADE 2022

温格市总体规划 / 194
VINGE CITY

基辅岛 / 198
KIEV ISLANDS

蚊州岛(月亮岛)景观修复规划设计 / 208
MOON ISLAND

AMBLESIDE海滨总体规划 / 212
AMBLESIDE WATERFRONT

伊斯坦布尔主题公园 / 218
ISTANBUL THEME PARK

橘城公园综合总体规划 / 228
ORANGE COUNTY GREAT PARK COMPREHENSIVE MASTER PLAN

可持续景观规划
Landscape Element

240

利用参数化设计来进行建筑和城市的设计 / 242
DIGITAL FABRICATION RELATED ARCHITECTURE AND URBAN DESIGN

我的竹林 / 256
MY BAMBOOM

旱地水再生——城市LMWT生态走廊 / 260
LIVING MACHINE WATER TOWER- WATER REGENERATION IN DROUGHT LAND

绿色健康城 / 286
GREEN HEALTH CITY

沙漠农业修复——从干草地到多明戈生态社区的转变 / 290
DESERT FARMING MOISTURIZER — TRANSITION FROM DRY LANDS TO DOMINGO ECO-COMMUNITY

PU LANDS

PUBLIC SCAPE

公共空间景观 006—099

莫斯科扎良奇耶公园

ZARYADYE PARK

该项目要达到的主要目标非常简单，就是打造一座在未来的几百年时间里都能保有其独特魅力具有永恒魅力的公园。这座非正式的公园拥有无限活力，将未来的一些潮流趋势和功能变化都考虑在内。我们不考虑打造一座“正式”的静态公园，这种看似时髦、让人惊叹的公园只考虑到了当前的一些状况，其“时髦性”只能保持很短的一段时间。

可以通过八个原则来解释该公园的设计：

1. 提升遗产价值；
2. 考虑到不同类型的居民的需求；
3. 开放式与相互联系性；
4. 开阔的空间；
5. 与地形相适应的空间设施；
6. 相似的建筑；
7. 公园与河流相接；
8. 阶梯式景观环境。



SECTION C | North-South section facing West

From Vavarka Street the new landscape is going down in terraces to the Central Grounds. Via the new Zaryadye Passage the Park is directly linked to the River Moskva and a new Boat Pier.



设计师 **ARCHITECT** / TPO RESERVE (Vladimir Plotkin, RU)
 Latz+Partner landscape architects (Tilman Latz, DE)
 MAXWAN architects + urbanists (Hiroki Matsuura, NL)
 项目地点 **LOCATION** / 俄罗斯, 莫斯科 Moscow, Russia



Enhancing Heritage

1



The park is surrounded by Muscovite icons, and occupied by monumental buildings. In fact, the park is located within the Unesco heritage area. Instead of the park being yet another icon that competes with surrounding historical buildings, it is a park that enhances the qualities of these existing heritages.

Diverse Inhabitants

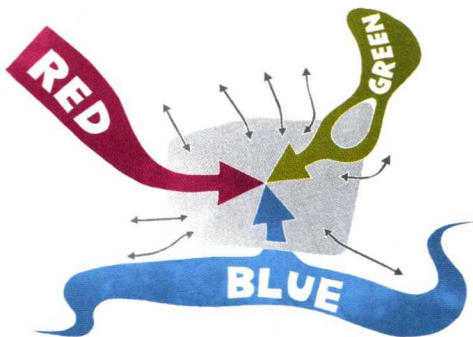
2



99% of all trees in Moscow are part of six tree species. We bring a wide variety of tree species into the park which symbolizes the variety of inhabitants of Moscow and Russia. And this variety naturally encourages biodiversity. This brings seasonal highlights throughout the year, with a spectacle of colours from spring to autumn.

Open & Connected

3



Red Square, Green Square Saint Elias and River Moskva are currently disconnected from each other. Our park connects these three important spaces by creating 3 main park entrances. Sub-entrances of the park are integrated into the adjacent urban tissue of Moscow in all directions.

Tolerant Rooms

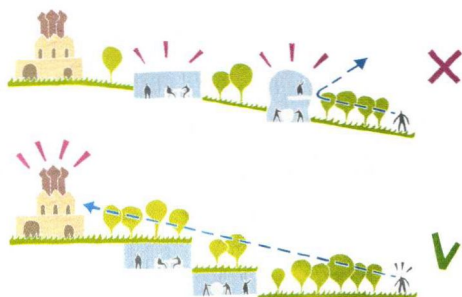
4



Diversity in the scale of open spaces within the park allows for a variety of park activities ranging from big public events to small intimate meeting. This also prepares the park for yet unknown future uses. We gave each open space their own character, thus serving the wishes of different users. Anybody can find their secret favourite spot in the park.

Topographic Facilities:

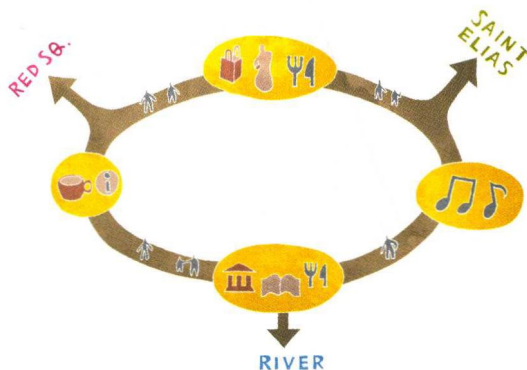
5



The new built facilities in the park are integrated into the sloping landscape, resulting in an optimized green park surface. This subtle integration means that buildings are never competing with the existing historical monuments in the direct surroundings.

Necklace of Building:

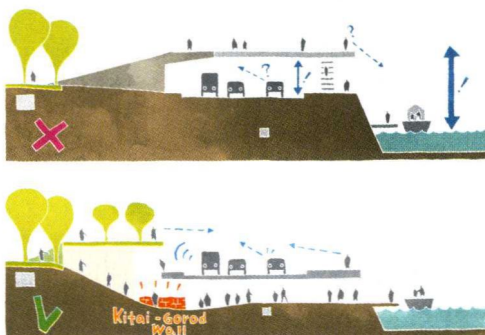
6



The new built facilities are located along a big ring in the park. The ring serves a simple and comfortable walking route for visitors to experience different indoor facilities. In winter, welcoming warmth and hot drinks are offered while strolling through the park.

Park meets River

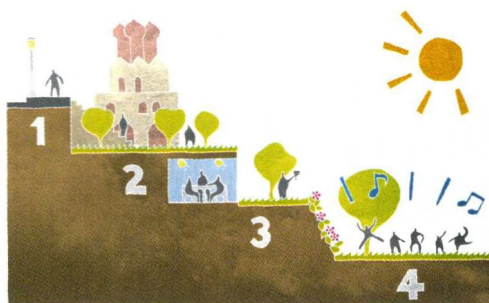
7



Currently the park and the river are separated from each other by a six-lane road. Instead of crossing over this road, we offer a wide passage under the road to the new grand waterfront that provides a smooth transition for pedestrians with minimum level differences. The passage coincides with the archaeological element "Kitai-Gorod wall" currently found in the underground. The building along the road serves as an anti-noise barrier for the park and creates a "belvedere" overlooking the River Moskva.

Terraced Landscape

8



We transformed the existing sloping topography of the site into four terrace-levels. Each terrace has its own character. They are great platforms, offering a variety of views and park activities. The upper terrace showcases the family of existing monuments.

奥地利维也纳European 11设计竞赛中，Dreiecksplatz的提案通过无记名投票的方式，赢得了一等奖。

该地块位于维也纳城区和维也纳森林之间，囊括了两个不同空间的特色——城市和大自然——这也是未来开发的基础理念。现在，地块被许多住宅建筑所环绕，拥有大片的私家绿地空间。该地块所需要的是一处大型的、高质量的公共空间，可以吸引不同类型的人来到这里生活、工作。三种主要类型的交通工具平台——公共汽车、电车和自行车——成为三角形广场的三个角，综合式的车站月台位于广场中央。不同的住宅、商务和社会空间项目成为空间的框架，向着公共三角广场延伸，并为其注入更多活力。设计师最大限度地放大绿色空间，培育了健康、教育和社会三方面的互动，同时，每一种自然元素——从野生林地到香草花园——确定了每个住宅区的空间氛围。

The proposal of Dreiecksplatz won the First Prize, by unanimous vote, for European 11 in Vienna, Austria.

Located between the Vienna Ring and Vienna Woods, the site embraces the marks of both environment – urban and nature – as a basis for future development. Currently surrounded by houses with a large amount of private green space, what is needed in the site is a generous, quality public space that will invite and sustain diverse groups of community to gather, live and work by. Major forms of transit – bus, tram and bicycle – anchor three corners of the triangle-shaped plaza with an integrated train platform in the middle. Various residential, commercial and social programs both frame and spill out toward the public triangle and support its liveliness. Green space is maximized at all different scales, fostering health, education and social interactions, while each kind of nature – from 'wild woods' to herb garden – defines the atmosphere of individual housing zone.

EUROPAN 11 获奖项目 EUROPAN 11 WINNING ENTRY

