

李望

大人

惠存

甥

興發

南洋大學卅周年紀念

徵文集

葉恭綽題

南洋大學卅周年紀念

徵文集

葉恭綽題

The Views of
The University Campus
in this Volume
are the Work
of
Chung Hwa Studio

The Shanghai Leading Photographer

Artistic Portrait	}	Our Speciality
Technical Photography		
Commercial Work		

Phone C. 5352

德 禪 臣 洋 行 商

創 立 於 西 曆 一 千 八 百 四 十 六 年

總 行 上 海 江 西 路 十 六 號

敝行經售德國著名製造廠各項機件如下：

(一) 原動機 各種內燃機。煤氣機。蒸氣機。透平機。

水力車等。

(二) 鐵路材料 各種機關車。客車。貨車。鋼軌。橋樑。

挖泥機等。

(三) 電汽機件 大小電光電力廠。水電廠。紗廠。麵

粉廠。榨油廠。水泥廠。造紙廠。煤氣廠。造船所等

應用一切電汽機件及材料如透平發電機。發

電機。馬達變壓器。配電盤。電線。電纜。電表等。

(四) 印刷機。紡織機。抽水機。冷氣機。造冰機。種類繁

多。不勝枚舉。

樣本及價目單函索即寄

SIEMSEN & CO.

SHANGHAI OFFICE 60 KIANGSE ROAD

BRANCHES ALL OVER CHINA

IMPORTERS : ENGINEERS : EXPORTERS

International Dispensary Co., Ltd.

Head Office: :: :: :: ::
Factory: :: :: :: ::

581-584 Foochow Road
Kin Kee Road, Siccawei

SHANGHAI

■營業宗旨

本公司凡各國醫療藥品 原料藥品
工業藥品 醫科器械 照相器具
各種衛生物品 化妝品一應俱全

▲唯一國貨

亞林
疫防臭水

▲質料純淨

▲成分充足

▲消毒滅菌

▲功效無比

▲凡惠顧者

▲須認明顯微鏡商標

本廠
自製 經驗家用良藥

人造自來血

女界寶

非洲樹皮丸

魚肝油精丸

海波藥

代參膏

呼吸香膠

良丹

上海
四馬路

五洲大藥房謹啓

中華興記香皂

上年八月間 本公司盤買
中華興記香皂廠 合併於
五洲固本廠內 牌號悉仍
其舊 專製各種中華興記
香皂及各種化妝品

五洲固本香皂

特聘經驗技師選用
上等原料精製化妝
各種香皂 質純氣
芳 國貨上品 價
廉物美 有口皆碑
請試購用 方知
不謬

壽比

恭賀



南山

友邦人壽保險公司謹祝

上海廣東路三號

南洋大學卅週紀念

南洋大學出版股介紹

中國牙科醫院
附設牙科留醫院院長司徒博牙醫生

司徒先生學術深邃經驗豐富敢以一言爲
牙疾諸公介紹

中國牙科醫院在法租界霞飛路尙賢坊三百

零四號

▲電話西五七七號

孫一茂紙號

本號紙貨首屈一指

品質優美信用久著

今更銳意研製精良

優待主顧取價從廉

諸君一試定能滿意

地址上海城內三牌樓中

英商怡和機器有限公司

獨家經理名廠五十家

本公司承辦一切精美機械聘有專門技師
代客計畫與夫指助各機用法並備有各種
現貨如蒙惠顧即請駕臨

圓明園路A八號總公司
或各處要埠分公司均可

自由之庫

本會創辦於民國元年。用獎金鼓勵儲蓄。信用昭著。保障穩固。每月積零成薨。且有最鉅大之希望。凡來本會儲蓄者。不但進幸福之門。亦如入自由之庫。學生時代如入本會儲蓄。則將來游學之費。可以無憂。倘有室家者。尤當亟早儲蓄。以備子女之教育費。凡爲未來之家計者。宜一加計算。早來儲蓄。

(詳章函索即奉)

全會

每月付十二元

半會

六元

四分之一會

三元

上海愛多亞路七號

萬國儲蓄會啓

The World's Greatest Graduation Class

During the period of a year's time **between** four and five thousand students of the International Correspondence Schools complete their Courses and are awarded diplomas thereon. In 1925 7,242 students were **graduated**.

Can you picture in your mind's eye the extent and the possibilities of such a group of ambitious men and women who have accomplished their aim solely in spare time?

Can you visualize the advancement in position and salary resulting from such a concerted effort on the part of a group of earnest, well-meaning, home-study students?

An I. C. S. Diploma is awarded only to a student who, by the excellence of his work, merits one. A Diploma is a statement signed and sealed by the officers of the Schools and members of the Faculty certifying that the person whose name appears thereon has satisfactorily completed the subjects taught in a given Course, including a Final Examination.

No one can buy these Diplomas ; they are given only for meritorious work. They have come to be recognized as an evidence of merit and are frequently passports to promotion. They may be found in the offices of many successful business men.

International Correspondence Schools

Dept. 51 83 Szechuen Road, Shanghai

List of some of the Courses offered :

TECHNICAL & INDUSTRIAL

ELECTRICAL ENGINEERING
MECHANICAL ENGINEERING
GAS ENGINES
CIVIL ENGINEER
RADIO
ARCHITECTURE
AGRICULTURE

BUSINESS TRAINING

SALESMANSHIP
ACCOUNTANCY
BOOKKEEPING
ADVERTISING
HIGH SCHOOL SUBJECTS
BANKING & BUSINESS
GOOD ENGLISH

Ask for a descriptive Catalog

先施有限公司

唯一大商店

滬行

上海南京路

津行

天津法租界(籌備)

本公司統辦環球貨

品推銷中華國貨舉

凡日用所需罔不搜

羅齊備價廉物美招

呼週到諸君賜顧

無任歡迎

粵行

廣州市長堤

總行

香港德輔道

SINCERE'S

(ESTB. 1900 A.D.)

HONGKONG

CANTON

SHANGHAI

TIENTSIN

(In projection)

UNIVERSAL PROVIDERS

MAIL ORDERS A SPECIALITY

上海

新新公司

本公司統辦環
球貨品推銷中
華國產舉凡名
貴珍品加意搜
羅一切日用需
求無美不備至
於學界所用中
西文具運動器
械久已悉心研
究務使貨美價
廉如蒙惠顧
格外歡迎

貴客函購貨品 * 郵票滙單通用

附設

新新旅館酒樓 新新屋頂花園

水火保險部 銀業儲蓄部

發售各種禮券 * 買貨可以代價

(電話) 中央二七一, 二七二, 二七三

(地址) 南京路市政廳對門

美商慎昌洋行

本行專辦機器、工程、進口、保險、成績優美。經驗
豐富。代表美歐各大名廠。經售電力電
燈廠全部機器材料。紡織、針織、建築、電
業、工廠、鐵路、農業、印刷、各種機器材料。
種類繁多。不勝枚舉。如蒙詢問或購辦。
無不歡迎。

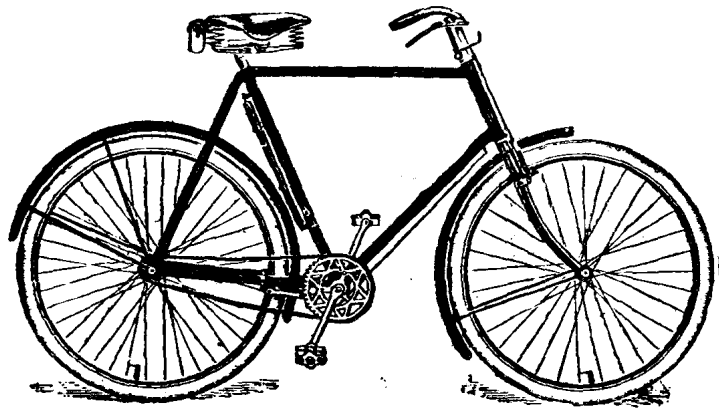
總行上海圓明園路。

分行漢口、天津、北京、奉天、濟南、香港、等處。



DUNLOP CYCLES

車 踏 脚 普 祿 鄧



LEAD THE WORLD IN CYCLE VALUE

CYCLISTS WHO KNOW THE NECESSITY OF HAVING ONLY MATERIALS OF THE FINEST QUALITY, THE MOST EXPERT OF WORKMANSHIP AND EXCELLENCE OF FINISH, FIND IN DUNLOP CYCLES, THE IDEAL MOUNT AT A PRICE WITHIN THE REACH OF ALL. BUY ONLY BICYCLES BEARING ONE OF THE FAMOUS DUNLOP MARKS

DUNLOP

牌 頭 人 老

POPULAR

牌 勒 潑 泡

THREE FLAG

牌 旗 三

CONVINCIBLE

牌 兒 白 雪 文 康



SELBY

牌 兒 賽

BOIDA

牌 德 巴

ADVANCE

牌 司 文 德 愛

RED LION

牌 獅 紅

“Count them on the road and
ask the man who owns one”

EVERY MACHINE CARRIES THE DUNLOP GUARANTEE OF QUALITY

DUNLOP RUBBER Co., (CHINA) LTD.

23 AVENUE EDWARD VII, SHANGHAI

告廣路鐵甯滬

啓者本路客列車往來於上海崑山蘇州無錫常州丹陽鎮江南京等站穩妥迅速設備週全沿途古蹟甚多風景雅幽靜別饒興趣堪稱為東南名勝菁華之區風景之佳甲於全國其最著者如南翔之古漪園崑山之馬鞍山蘇州之虎邱天平山無錫之惠山梅園太湖勝景常州之天寧寺太平寺鎮江之金山焦山甘露寺及南京之明陵莫愁湖等



蘇州虎邱塔之遠景

車務總管奉命啓

無錫常州丹陽處均爲我國特殊勝景如乘車出行作竟日之郊游必能爽心悅目於精神上康健上獲益匪鮮特別夜快車備有臥車床位清潔舒暢倘係團體旅行本路訂有定章以人數多寡核減票價惟須先期函知車務總管核准此佈

司公限有份股館器儀學科 **The China Educational Supply Association, Ltd.**

ESTABLISHED 1901

MANUFACTURERS AND IMPORTERS OF
SCHOOL AND LABORATORY SUPPLIES ETC.

CABLE ADDRESS
'KOHYOKWON' OR '6427'
SHANGHAI

HEAD OFFICE
C. 58-59 HONAN ROAD
SHANGHAI, CHINA

TELEPHONE
CENTRAL 2081

目 要 業 營

貨物精良充足

價值克己低廉

物理器械	化學器械	博物標本	醫學器械	農業用具	繪圖器具	音樂器具	文具用品
測量器械	化學藥品	博物模型	醫學藥品	工業材料	美術用品	運動器具	書籍碑帖

備有各種目錄

函索隨即寄奉

◎發行所

總館 上海棋盤街

分館 奉天鼓樓北 漢口後花樓

新鄉大北街

本館創立距今二十六年。前科學思想時方輸入本館。編譯書籍。設所傳習。北抵遼瀋。南及桂林。雖規模簡陋。而國人知有所謂科學者。實自此始。嗣後教育發達。新編日出。本館乃專致力於儀器之製造。未遑他務。惟是學識日進。思想日新。器械日精。本館以固陋之技能。閉門造車。深以未能合轍。自懼世有績學之士。晉而教之。幸何如焉。

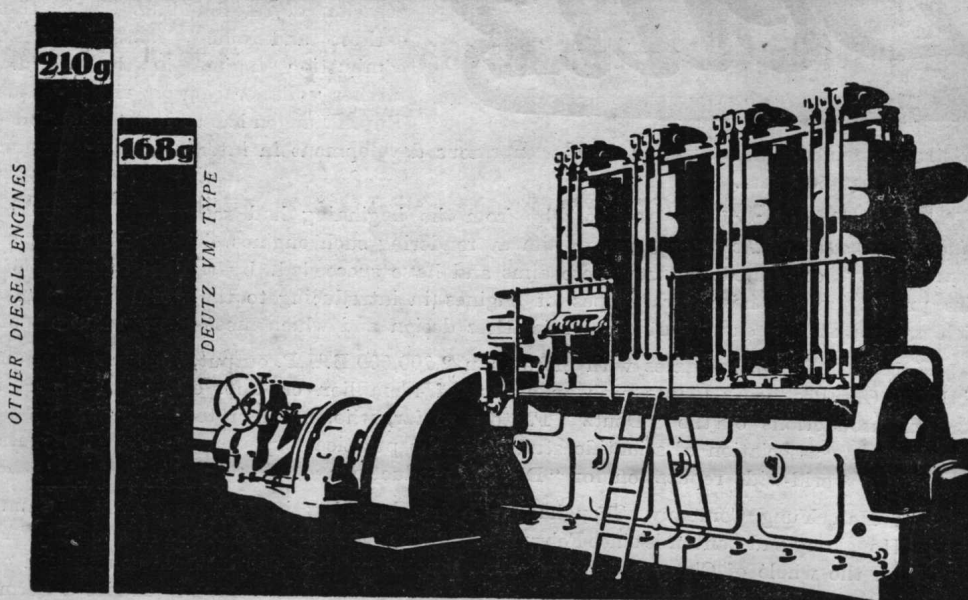
◎製造廠

總廠 上海恆豐路

新廠 新鄉大北街

Deutz Solid Injection Diesel Engine

DEUTZ-VM



The New airless injection Deutz Diesel Engines in sizes from 100 HP to 1,000 HP for all industrial and marine purposes: for Electricity Works, Cotton Silk, and Oil-Mills, etc. and with reversing gear or direct reversible for: Tugs, Cargo and Passenger-Boats, auxiliary Power for sailing vessels, Junks, Motor driven Anchor and Cargo winches, Electric Generating Sets, Fire and Bilge Pumps. More than 3,500 marine Engines have been supplied by the Factory and more than 25 Boats are running with Deutz Marine Engines in China.

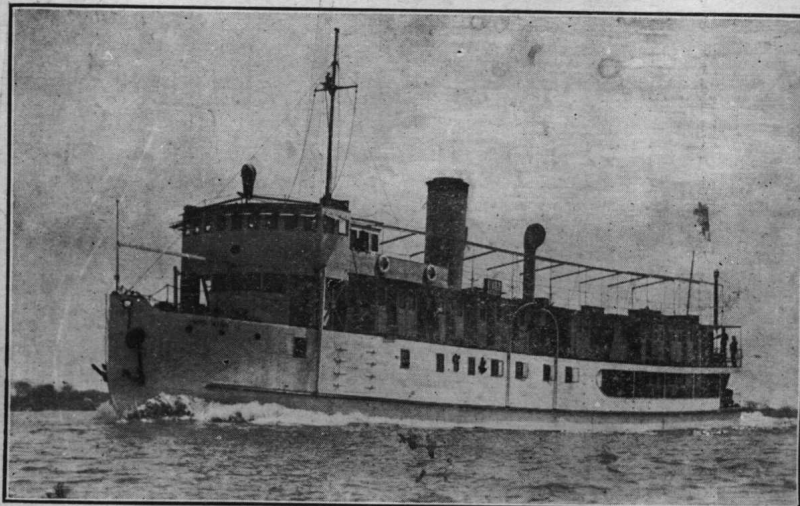
Unrivalled Economy and Efficiency

Fuel Consumption : 0,375 lbs per B. H. P./Hour

The principal advantages in comparison with other Heat Engines are:

1. Simplicity of design and easy control.
2. Moderate weight.
3. Small Engine Room space required.
4. Easy and speedy Erection
5. Runs on all cheap Liquid Fuels.
6. No high duty Compressor, no Magneto, no Blow Lamp, etc.
7. Low cost of maintenance.
8. Utmost reliability and safety of operation.
9. Maximum of Economy.
10. Always ready for immediate service.
11. Very economical consumption, of Fuel and Lubricants.

Passenger and Cargo Boat "Young Ning", a triple screw Motor Vessel, built by Nanyang Engineering Works, Shanghai. She is constructed for an overall length of 137 feet, a beam of 25 feet and a moulded depth of 6½ feet; she draws in service order 4 feet and carries 90 tons of freight at a draft of about 5 feet. She is driven by three Deutz airless injection Diesel Engines of 200 h. p. each and when timed over the measured mile, she performed a speed of 14 miles an hour. The Boat is now on her regular run between Ichang and Chungking and is capable to pass the Gorges by her own power.



2
557.071
1
12

1229519

Deutz

The MOTORENFABRIK DEUTZ A. G. was founded in the year 1864 by N. A. Otto and Eugen Langen. The invention of the gas engine by N. A. Otto was the occasion of its founding. It is thus the earliest and oldest factory for internal combustion engines in the world. The further collaboration of the inventor with Eugen Langen led to the production of the

four-stroke engine, which resulted in the enormous development in international intercourse and during the last 50 years.

The leading idea of the founder, who from the beginning had recognized, *in gas and oil engines, the power of the future*, was to aim at rendering such engines simpler and cheaper. His successors have continued loyal to these aims and have succeeded, by the introduction of mass series production of the several types of engines in introducing to the world market machines which are not merely cheap but also of faultless design and which meet every requirement.

More than 165,000 engines with more than 2,200,000 B.H.P. output, 7000 motor locomotives and 12000 Gas Producing Plants with an output of 43 million cub. ft. of gas per hour, is the record of productions of the "Deutz" Factory so far, who, by their technical perfection based on the intimate association of scientific study and the practical experience of over 60 years have established a world-wide reputation for "Deutz" productions.

The Han Yung Company, Shanghai, with her branches in Hankow, Ichang, Chungking, Tientsin, Hongkong and Canton is since February 1922, the representative of the MOTORENFABRIK DEUTZ for the whole of China and during that time more than 250 internal combustion engines of more than 11,000 H.P. were installed by her in China. The Company carries a permanent stock up to 200 B.H.P. Diesel Engines for industrial and marine purposes. For the installation of all engines from 6 H.P. to 1000 H.P. a permanent staff of German construction and expert erecting engineers is maintained in Shanghai and the Hankow, Chungking, and Tientsin Branches so that every guaranty for a good installation and a proper running of the engines can be given at any time.

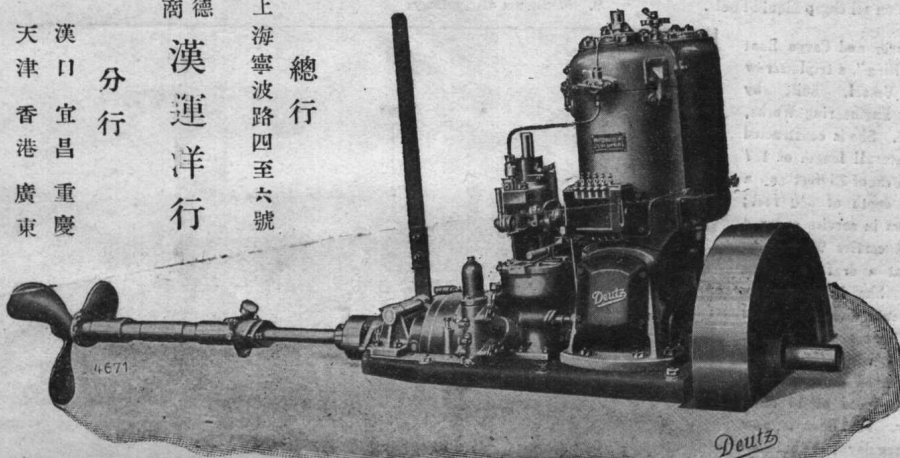
The Han Yung Company

4/6 Ningpo Road, Shanghai.

總行
上海寧波路四至六號

德商
漢運洋行

分行
漢口 宜昌 重慶
天津 香港 廣東

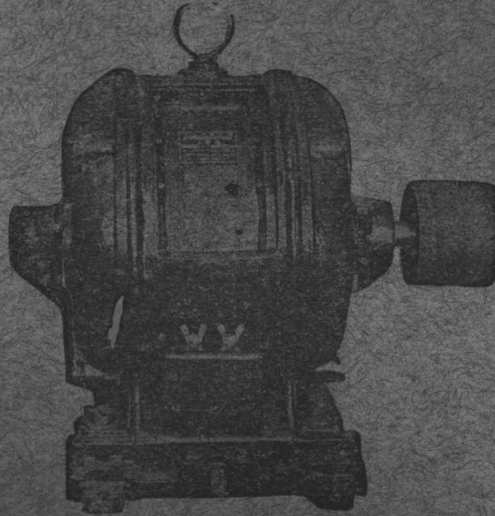


國貨電氣用品

電火爐



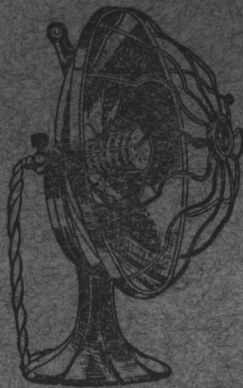
電動馬達 (達馬)



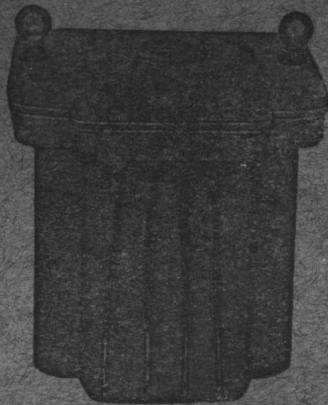
葫蘆



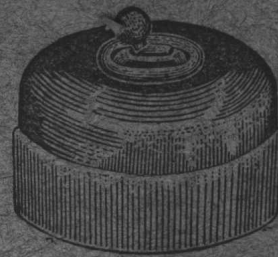
電火爐



變壓器 (方棚)



牛開關




電器

電機

電料

愛用國貨富民強

本公司為挽回利權外溢糾集同胞開設工廠專門製造電機電器電料於民國十一年成立於茲四載所有出品物美價廉勝過舶來品頗受社會歡迎茲為預防假冒起見本公司所有出品多有中商標為記恐未週知特此聲明望愛國同胞臨購時指定國貨臨購時認明

商標  為荷

益中機器公司謹啓

工廠 浦東凌家木橋

發行所 上海江西路B四十號

代售處 本外埠各電料行