

设计流

08

DESIGN STREAM 中式茶楼

Chinese teahouse

# 中式茶楼

professional edition of actual scene photographing

实景拍摄专业版

深圳市南海艺术设计有限公司 / 主编

南海出版公司



图书在版编目(CIP)数据

中式茶楼 / 深圳市南海艺术设计有限公司主编. —海口: 南海出版公司, 2003.8  
(设计流: 8)

ISBN 7-5442-2528-3

I. 中... II. 深... III. 茶馆—室内装饰—建筑设计—图集 IV. TU247.3-64

中国版本图书馆CIP数据核字 (2003) 第055469号

SHEJI LIU 08 —— ZHONGSHI CHALOU  
设计流 08 —— 中式茶楼

---

主 编	深圳市南海艺术设计有限公司
责任编辑	陈正云 周诗鸿
封面设计	深圳市南海艺术设计有限公司
出版发行	南海出版公司 电话 (0898) 65350227
社 址	海口市蓝天路友利园大厦 B 座 3 楼 邮编 570203
电子信箱	nhcbgs@0898.net
经 销	新华书店
印 刷	深圳宝峰印刷有限公司
开 本	635×965mm 1/8
印 张	29
版 次	2003年8月第1版 2003年8月第1次印刷
书 号	ISBN 7-5442-2528-3
定 价	198.00元

---

南海版图书 版权所有 盗版必究

# CHINESE TEAHOUSE 中式茶楼

深圳市南海艺术设计有限公司 / 主编  
Shenzhen Nanhai Art Design Co., Ltd. / Editor in chief

实 景 拍 摄 专 业 版



professional edition of actual scene photographing

南海出版公司

2003 · 海口

Nanhai Publishing Co.  
2003 Haikou



# CONTENTS

前言 Preface

仙人泉茶艺馆 .....	6
Xianrenquan Teahouse	
雅石茶艺馆 .....	14
Yashi Teahouse	
镜花缘茶楼 .....	24
Jinghuayuan Teahouse	
绿茵茶社 .....	30
Lüyin Teahouse	
明梦轩茶馆 .....	44
Mingmengxuan Teahouse	
径山茶馆 .....	50
Jingshan Teahouse	
茗山茶苑 .....	54
Mingshan Teahouse	
星辉茶楼 .....	62
Star Teahouse	
皇城老妈(皇城店)坝调茶庄 .....	68
Huangcheng Laoma (Huangcheng Store)	
Badio Teahouse	
广州流花茶艺馆 .....	76
GuangZhou Liuhua Teahouse	
月瀛茶艺馆 .....	80
Yueying Teahouse	
“茶言观舍”茶艺馆 .....	88
“Cha Yan Guan Shè” Teahouse	
酿名斋茶艺 .....	92
Niangmingzhai Teahouse	





清韵茶艺馆 .....	96
Qingyun Teahouse	
紫竹琴韵 .....	100
Charm of Bamboo and Qin	
深安茶艺馆 .....	104
Shen'an Teahouse	
豪宫茶艺美食馆 .....	110
Haogong Food and Teahouse	
华晨茶艺轩 .....	118
Huachen Teahouse	
青竹茶庄 .....	122
Bamboo Teahouse	
朗月茶艺馆 .....	126
Langyue Teahouse	
千源茶楼 .....	132
Qianyuan Teahouse	
自然茶艺馆 .....	138
Nature Teahouse	
亭亭茶艺馆 .....	144
Tingting Teahouse	
茗阁茶楼 .....	148
Mingge Teahouse	
石象湖茶楼 .....	150
Shixiang Lake Teahouse	
广州雁南飞茶艺馆 .....	152
Guangzhou Yan Nan Fei Teahouse	
西湖茶艺馆 .....	156
West Lake Teahouse	

金鼎茶楼 .....	162
Jinding Teahouse	
怡景茶馆(珠海怡景湾大酒店) .....	168
Yijing Teahouse (Zhuhai Yijing Bay Grand Hotel)	
山村茶艺馆 .....	172
Village Teahouse	
清怡阁茶楼 .....	174
Qingyige Teahous	
心镜茶艺馆 .....	176
Heart Mirror Teahouse	
静颐茶馆 .....	178
Jingyi Teahouse	
新雅苑茶楼 .....	190
New Yayuan Teahouse	
忆君香茶苑 .....	196
Yijunxiang Teahouse	
茶人居 .....	202
Cha Ren Ju	
热盆景金沙店 .....	208
Hot Miniature Garden Jinsha Store	
聚茗居茶楼 .....	210
Jumingju Teahouse	
广州越秀茶艺乐园 .....	214
GuangZhou Yuexiu Teahouse Paradise	
茶皇殿(银都酒店) .....	222
Chahuang Palace (Yindu Hotel)	



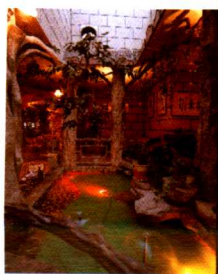


## 前言

中国茶文化是中华文化中重要的组成部分，由世界第一部茶书《茶经》，到近代文学名著《茶馆》，茶对国人影响极深，关于茶的各类文献更是不计其数。茶文化作为一种最具自然性质的文化形态，在中华历史上已经烙上深深印痕，成为极其闪光的部分。而品茶过程派生出的茶诗、茶词、茶帖、茶画、茶歌、茶舞等，使中国的茶道更是兼具各种艺术的精华而倍显其独特的神韵。

茶馆既是茶道展示、表演的地方，也是文人雅士品茗聚会的空间，更是时下都市人时尚品味的消费场所。它的空间营造已不仅仅是普通环境装饰那么简单，而是升华为一种特定的文化氛围的塑造。茶馆的设计不仅要求设计者精通茶道，着力体现茶之含蓄内敛，更需具备对各部门艺术通融贯穿的能力，从而营造现代的中式茶馆，使之有别于世界其他文化渊源的餐饮空间，蕴涵其中的儒、释、道三家的思想精华，调动人的各感官在三维空间里去体味这门综合的艺术。

特定的主题也赋予空间特定的功能形态，茶馆空间一般备有观赏茶艺或琴艺的散座，以及私密性较强的厢房，分别满足客人的不同需求。展示柜台、展示层架、壁龛可为经营者提供茶叶、茶具、艺术摆设展示的位置；茶、棋、书、画、陶的结合，有助于营造茶馆的文化气氛。中国哲学认为万事依据客观规律，“顺天之时，因地之宜”，茶文化最能体现这种“天、地、人”的思维模式。本书中的“静颐茶馆”就综合了中国最传统的思想哲学和自然



## Preface

Chinese tea culture is an important composition in the history of Chinese culture. From the world first tea book - "Tea Classics" to the famous literal works "Teahouse" in modern China, tea has great influence on the Chinese people, and there are many various literatures about tea. As a cultural form of the most natural property, the tea culture has had deep mark in the Chinese history, becoming its glittering part. The derivative tea poems, tea ci, tea document, tea painting, tea song, tea dancing, etc. make the Chinese tea ceremony full of various artistic glory and showing its unique charm.

Teahouse is the place to demonstrate and perform the tea ceremony, also the environment where the scholars gather, and what's more, it is the current consumption place where the urban people taste fashion. Its space creation is no longer that simple as changing the environmental decoration but is sublimed to the molding of a kind of specific cultural atmosphere. The teahouse design not only requires the designer knows tea ceremony and tries to reflect the inner meaning of the tea, but also requires him has the penetration ability for various arts, thus creating modern Chinese teahouse, making it different from the dining space of world other cultural origins, containing the ideological essence of Confucianism, Buddhism and Taoism, and mobilizing the sensory organs of the people to feel this comprehensive art.

The specific theme also assigns the space with specific function and form. The teahouse space normally has scattered seats for enjoying tea ceremony or performance of musical instrument and the wing rooms with strong privacy, meeting the different demands of the customers. The display counter, display shelf and niche can provide the managers with the location to display tealeaf, tea utensil and artistic layout; the combination of tea, chess, book, painting and pottery is helpful for creating the cultural atmosphere of the teahouse. The Chinese philosophy thinks everything is based on the objective rule, complying with the natural law. Tea and tea culture can reflect the thinking mode of "heaven, earth and man". "Jingyi Teahouse" in this book has summarized the most traditional Chinese ideological





理念。比如在琴台上装饰一根“天人合一”的主题雕柱以体现茶的最高精神境界；在适当的位置设置一个陶吧，客人可自己制作泥陶，让人寻回儿时的感觉；在主题体现上，围栏采用“茶花”陶片串以粗麻绳，使空间自然、舒雅；如茶叶经脉般的灯具，引领人步入幽静澄清的世界……茶馆的空间营造，不宜喧哗绚丽，以天然的元素为主，尽量减少人工合成材质，构筑一个清新、飘然于尘世之外的雅致空间，才是茶文化环境的最高境界。本书各茶馆空间在装饰选材上不拘一格，无论是平实的民间红砖或石板，贵重的明清家具，清新舒适的藤制品，还是各具情调的艺术摆设，多样化、人情化的表达方式都给茶馆空间带来一份脱俗的诗情画意，一份浓郁的文化气氛。它既是来自自然的元素构成，也是人工雕琢的精品。

愿《中式茶馆》在带给大家一幅幅精美且具有东方情调的画面时，还能给人一份茶的情思，一份文化的熏陶……

## 洪忠轩

中国建筑学会室内设计学会第三专业委员会（深圳委员会）委员、香港室内设计协会中国（深圳）代表处委员。汕头大学美术设计系毕业，学士学位，中国室内建筑师。致力于文化酒店的研究和设计。

### 设计的主要作品：

棒槌岛宾馆（五星级）、大连凯伦饭店（五星级）、焦作市国瑞酒店（五星级）、宁波天明山温泉度假大酒店、宁夏国际宾馆（五星级）、青海黄河水电开发公司调度大楼、黑龙江省电力调度大楼、丰田深圳经营店及办公楼、海南省曲靖电视中心、华中师范大学体育馆等。

### 曾获奖项：

2001 年作品“杭州大剧院”获中国室内设计大奖赛佳作奖；2002 年作品“香蜜湖·水榭花都”获第一届中国（青岛）国际设计节室内设计一等奖；2002 年获“中国金海螺设计大赛”8 项优秀奖及“全国室内设计大展”三项大奖。



philosophy and natural concept. For example, decorate one carving column on the musical instrument platform with the theme of "combining the heaven and man into one" to reflect the highest spiritual realm of the tea; set one pottery bar at appropriate location, the customers can make clay pot themselves, making the people find the feeling when they were young; in the theme expression, the fencing uses "camellia" pottery to string together with coarse hemp rope, making the space natural and elegant; the lighting fixture like channels of tealeaf guides people enter the serene and clear world. The teahouse space creation should take natural elements as the main part instead of being clamorous and flowery, trying to reduce the artificial synthetic material and construct one clean and elegant space beyond the ordinary world, and this is the highest realm of tea culture environment. Each teahouse in this book doesn't stick to one pattern for the selection of decoration materials, whether plain folk red brick or slab stone, noble furniture of Ming and Qing Dynasties, elegant and comfortable rattan products, various styles of artistic items, versatile and sentimental expression have brought the teahouse space with one refined artistic conception like poetry and painting, and one intense cultural atmosphere. It is both element coming from the nature and elaborate works with artificial carving.

We hope "Chinese-style Teahouse" can give you a lingering affection of tea and one cultural edification while bringing you those elegant paintings of oriental sentiment

## Hong Zhongxuan

Member of Tertiary Specialty Committee (Shenzhen Committee) of Indoor Design Society of China Architecture Association, and member of China (Shenzhen) Representing Office of Hong Kong Indoor Design Association, graduated from Fine Art Design Department of Shantou University, bachelor's degree, Chinese indoor architect, dedicated to the research and design of cultural hotel.

### Main design works:

Wooden Club Island Hotel (five-star), Dalian Kailun Hotel (five-star), Jiaozuo Guorui Hotel (five-star), Ningbo Tianmingshan Hot Spring Vacation Hotel, Ningxia International Guesthouse (five-star), Dispatching Building of Qinghai Yellow River Hydropower Development Co., Heilongjiang Power Dispatching Building, Toyota Shenzhen Branch and Office Building, Hainan Qujing Television Center, Stadium of Huazhong Normal University, etc.

### Prizes awarded:

"Hangzhou Grand Theater" in 2001 won Excellent Prize of China Indoor Design Competition; "Xiangmi Lake Waterflowers" in 2002 won the Indoor Design First Prize of the First China (Qingdao) International Design Festival; in 2002, won eight excellent prizes in "China Golden Sea Snail Design Competition" and three grand prizes in "China Indoor Design Exhibition".







仙人泉茶艺馆  
Xianrenquan Teahouse

摄影: 周末

建筑面积: 1600m<sup>2</sup>

装修材料: 木皮、地砖、涂料等

Photographer: Zhou Mo

Floor area: 1600m<sup>2</sup>

Decoration material: Wood skin, floor tile, coating, etc.



大厅 Hall



仙人泉茶艺馆位于华强北。在此不仅可以喝茶会友，还可以唱卡拉OK。其设计理念主要是传达现代人对舒适生活的向往，从而营造一种具有实际意义、人性化且舒适清雅的空间。

Xian Ren Quan Teahouse is situated in North Huaqiang Road. Here you can not only drink tea and meet friends, but also sing karaoke. Its design philosophy is mainly conveying the longing of modern people for the comfortable life, thus creating a practical, humanized, comfortable and elegant space.







大厅 Hall





大厅 Hall



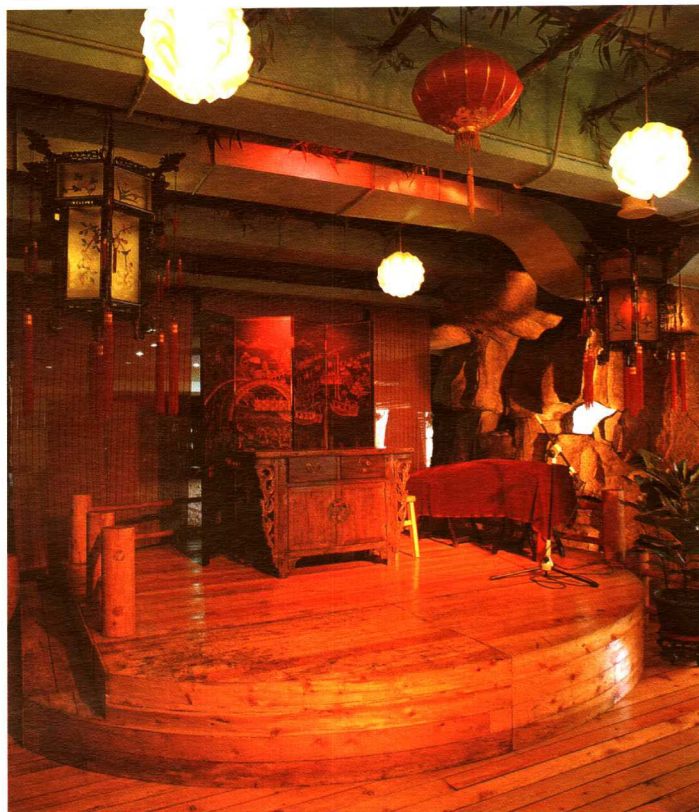




茶座 Teahouse



表演区 Performance area



休闲区 Leisure area



收银台 Cashier





包房 Compartment



包房 Compartment



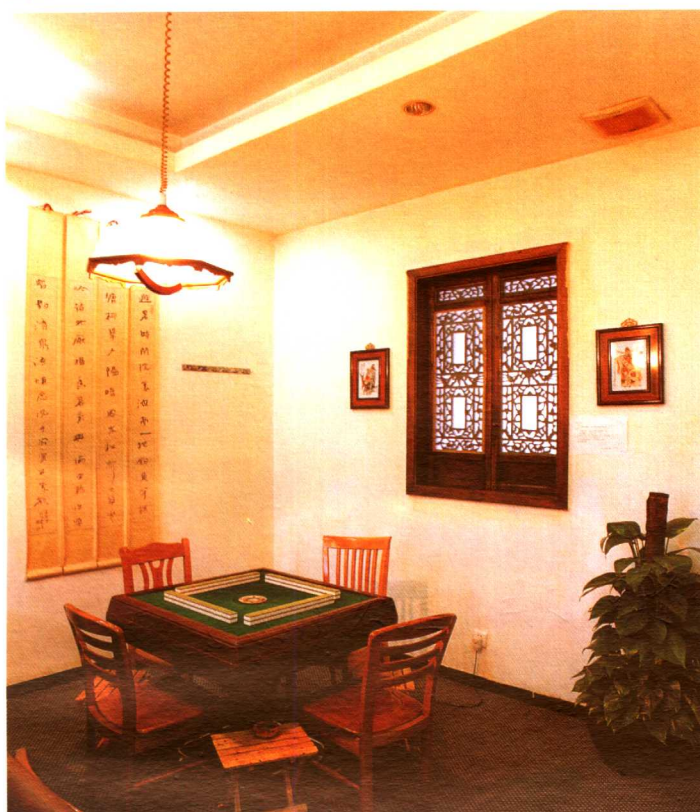
包房 Compartment



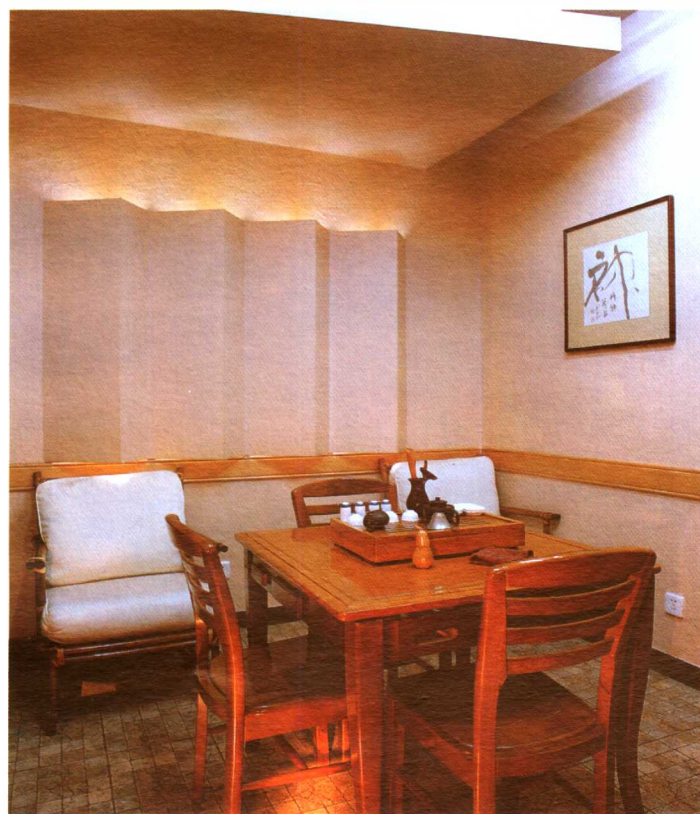
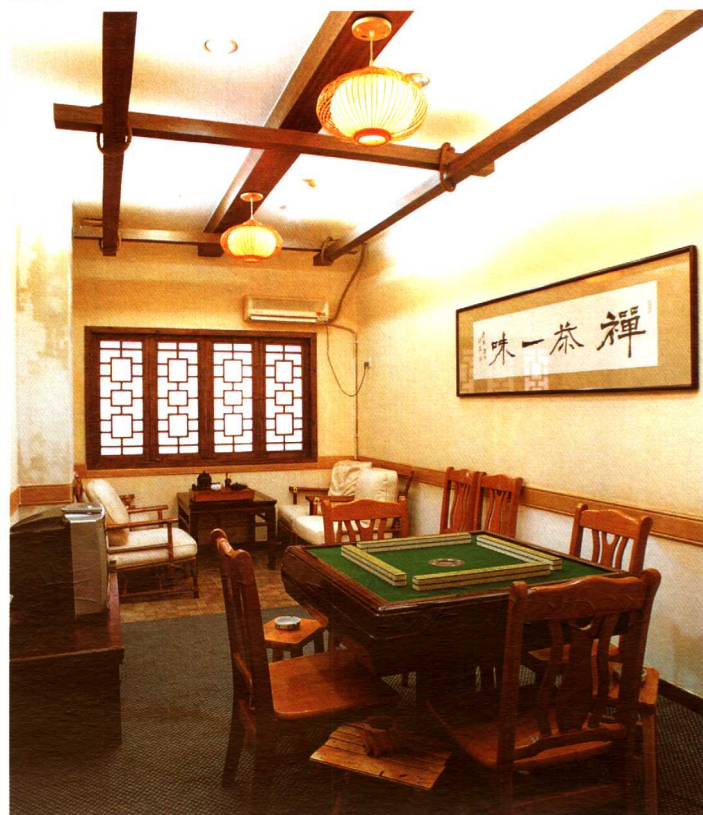
包房 Compartment



娱乐室 Amusement room



娱乐室 Amusement room



茶室 Teahouse



茶室 Teahouse





雅石茶艺馆  
Yashi Teahouse

设计单位: 深圳市博大装饰工程有限公司

设计师: 叶佐稳

摄影: 喻楚迪

建筑面积: 750m<sup>2</sup>

装修材料: 沙比利塑色、墙纸、文化石等

Designed by: Shenzhen Boda Decoration Engineering Co., Ltd.

Designer: Ye Zuowen

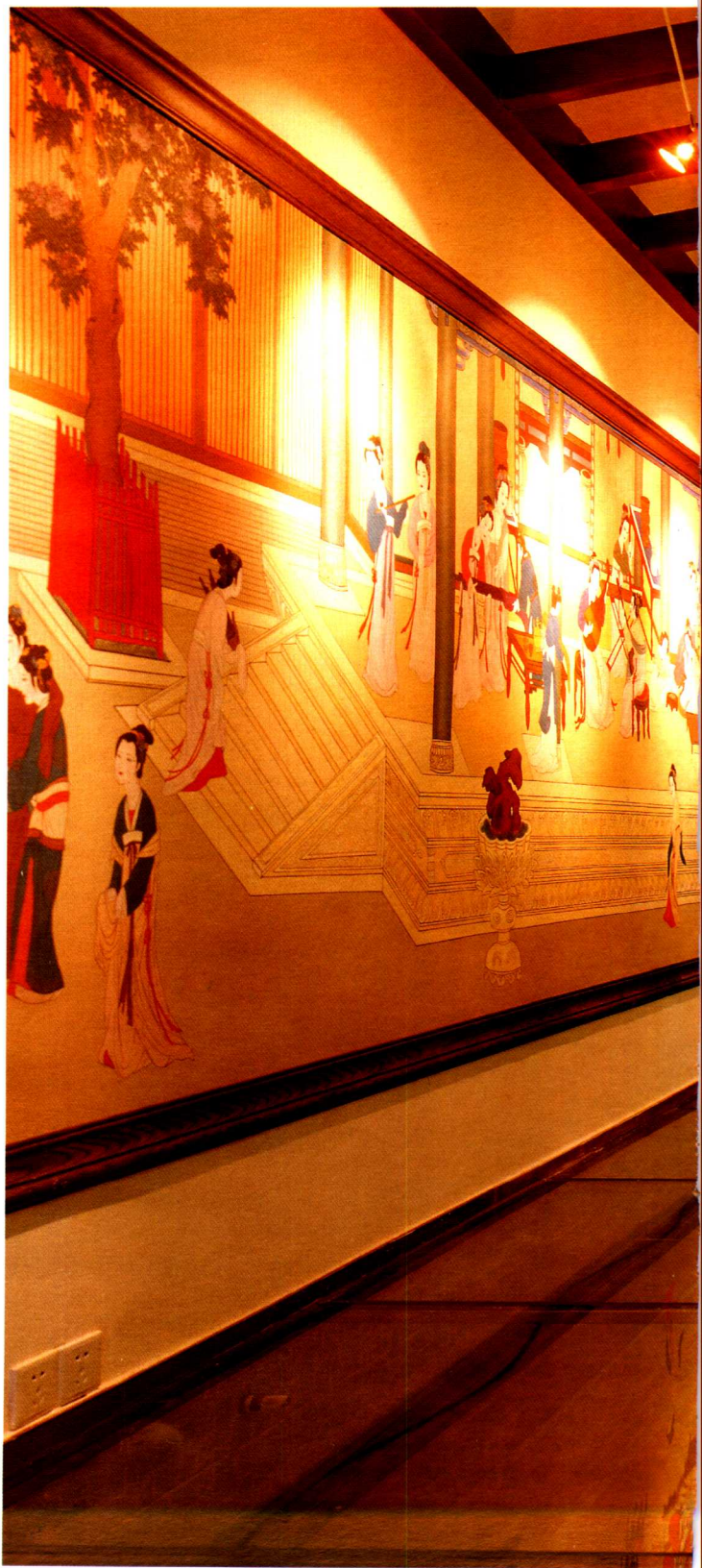
Photographer: Yu Chudi

Floor area: 750m<sup>2</sup>

Decoration material: Sapele plastic color, wallpaper, ICI paint, cultural stone, etc.



入口大门 Main gate at entrance



过道 Corridor



小桥流水配上中式风情的实木挂落，尽显悠然宁静的休闲氛围。各种奇石匠心独具地摆放在这个环境里，与整体风格丝丝入扣。简洁而不失韵味中式屏风、中式木雕经过有机组合，营造一个如江南水乡的人文去处。

Little bridge with flowing water and Chinese-style solid wood hanging has fully shown the elegant and serene leisure atmosphere. Various strange stones are uniquely arranged in this environment, matching the complete style. The simple but charming Chinese-style screen and wood carving are combined organically to create one humanistic place like Southern Chinese watery region.

