

当代景观设计2

CONTEMPORARY
LANDSCAPE
DESIGN 2

李壮 编



天津大学出版社
TIANJIN UNIVERSITY PRESS

北京吉典博图文化传播有限公司是融建筑、美术、印刷为一体的出版策划机构。公司致力于建筑、艺术类精品画册的专业策划。以传播新文化、探索新思想、见证新人物为宗旨、全面关注建筑、美术业界的最新资讯。力争打造中国建筑师、设计师、艺术家自己的交流平台。本公司与英国、新加坡、法国、韩国等多个国家的出版公司形成了出版合作关系。是一个倍受国际关注的华语出版策划机构。

Beijing Auspicious Culture Transmission Co., Ltd. is a publication-planning agency integrating architecture, fine arts and printing into a whole. The Company is devoted to the specialized planning of the selected album in respect of architecture and art, and pays full attention to latest information in the fields of architecture and art, with the transmission of new culture, the exploration of new ideas, the witness of new celebrities as its tenet, striving to build up the communication platform for Chinese architectures, designers and artists. The Company has established cooperative relationships with many publishing companies in Britain, Singapore, France and Korea etc. countries; it is an outstanding Chinese publishing agency that draws the global attention.

Contributions 征稿 Wanted... 进行中.....

《当代建筑师》、《当代景观设计》、《建筑+表现》

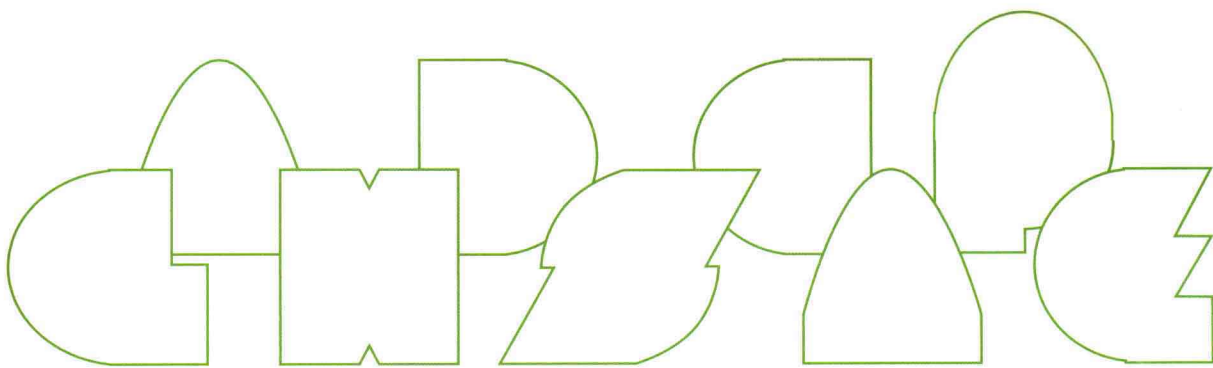
<<Contemporary Architects>> << Contemporary Landscape Design>> <<Architecture + Rendering>>

感谢您的参与！



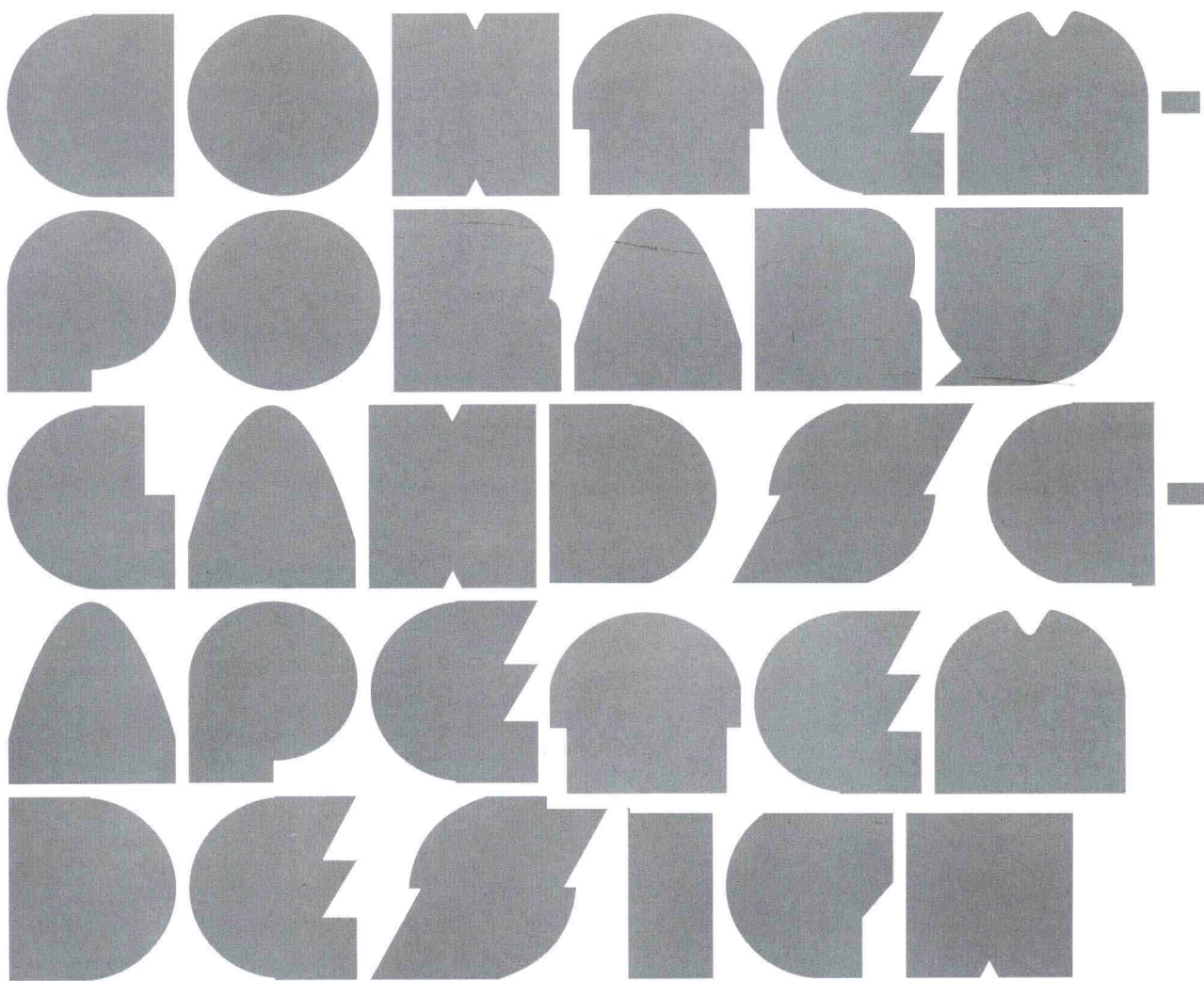
TEL: 010-68786829 010-67533200 010-68215537

E-MAIL: ji.shinei@gmail.com ji.jianzhu@gmail.com ji.jingguan@gmail.com



当代景观设计2

李壮 编



图书在版编目 (CIP) 数据

当代景观设计. 2 / 李壮编. — 天津: 天津大学出版社, 2011.6

ISBN 978-7-5618-3954-6

I. ①当… II. ①李… III. ①景观设计—图集
IV. ①TU986.2-64

中国版本图书馆CIP数据核字(2011)第099630号

主 编: 李 壮

执行主编: 孙 嘉

责任编辑: 油俊伟

编 委: 李 秀 刘 云 韦成钢 高 松
迟 锋 夏 屹 田 柳 顾吉胜

编 辑: 肖 娟

设计总监: 陈 利

设计制作: 杜 璟 周 宇 王琳珊

翻 译: 国 歌

策 划: 7 古典文化

出版发行 天津大学出版社

出 版 人 杨欢

地 址 天津市卫津路92号天津大学内 (邮编: 300072)

电 话 发行部: 022—27403647 邮购部: 022—27402742

网 址 www.tjup.com

印 刷 上海瑞时印刷有限公司

经 销 全国各地新华书店

开 本 240mm×312mm

印 张 40.5

字 数 578千

版 次 2011年6月第1版

印 次 2011年6月第1次

定 价 480.00元 (共两册)





**ANDREA COCHRAN LANDSCAPE
ARCHITECTURE**

安德烈·科克伦景观设计



CHARLES ANDERSON+PARTNERS

查尔斯安德森景观建筑公司



COEN+PARTNERS, INC.



GRUPO DE DISEÑO URBANO



GUSTAFSON GUTHRIE NICHOL LTD.



JANET ROSENBERG ASSOCIATES

CLAUDE CORMIER ARCHITECTES

PAYSAGISTES INC.

HARIRI PONTARINI ARCHITECTS



KEN SMITH



LANDWORKS STUDIO, INC.

Landworks工作室



MICHAEL SORKIN STUDIO

迈克尔·索金事务所



MARTHA SCHWARTZ PARTNERS



MOSSOP+MICHAELS



METROSTUDIO ASSOCIATES

**SHENZHEN METROSTUDIO LANDSCAPE
PLANNING & DESIGN CO., LTD.**

意大利迈丘设计事务所

深圳市迈丘景观规划设计有限公司



CONTENTS

目录:



MSI DESIGN



**NELSON BYRD WOLTZ LANDSCAPE
ARCHITECTS**



OLIN



OSLUND AND ASSOC.

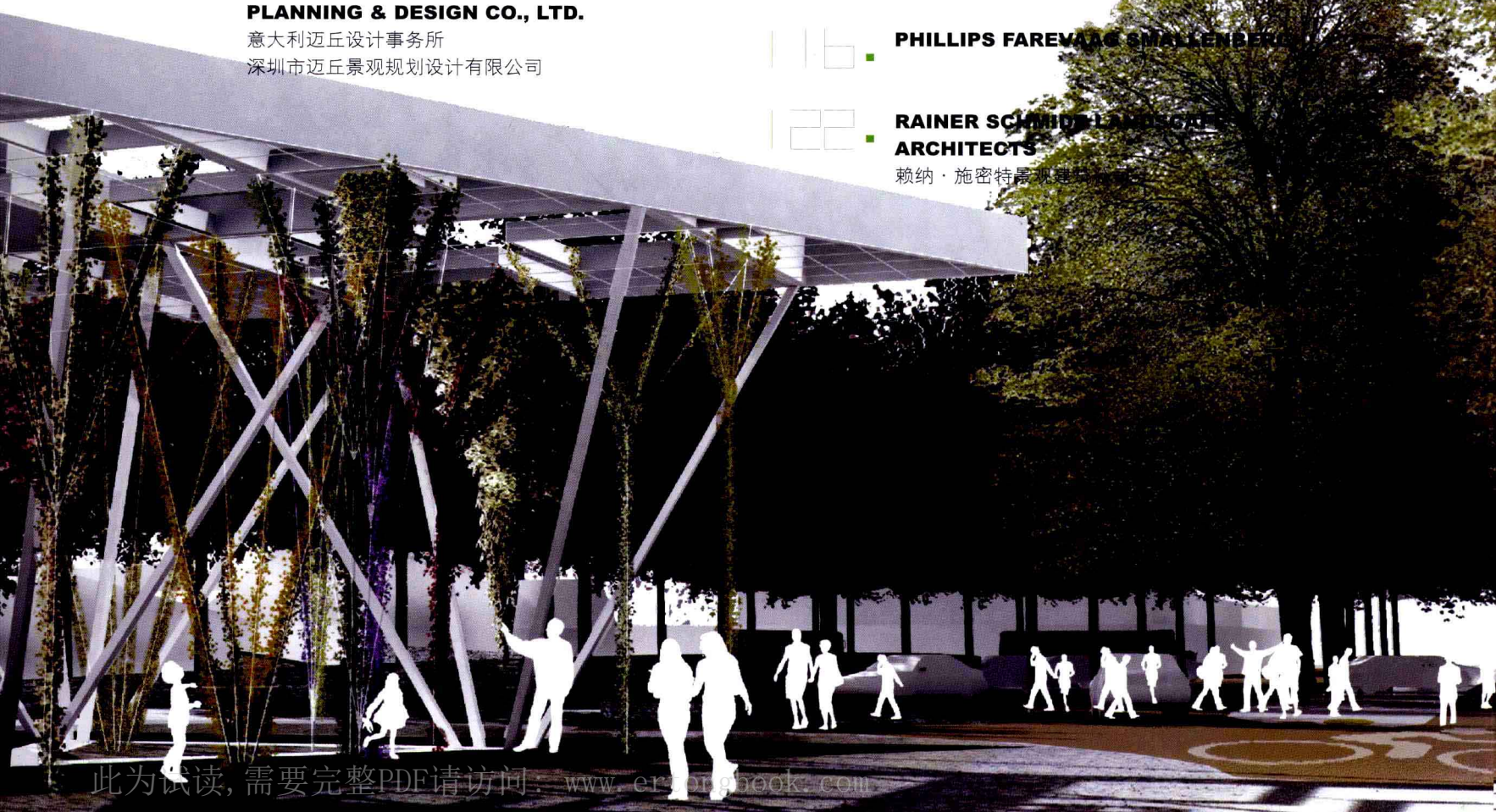


PHILLIPS FAREVAAG SMALLENBERG



**RAINER SCHMIDT LANDSCAPE
ARCHITECTS**

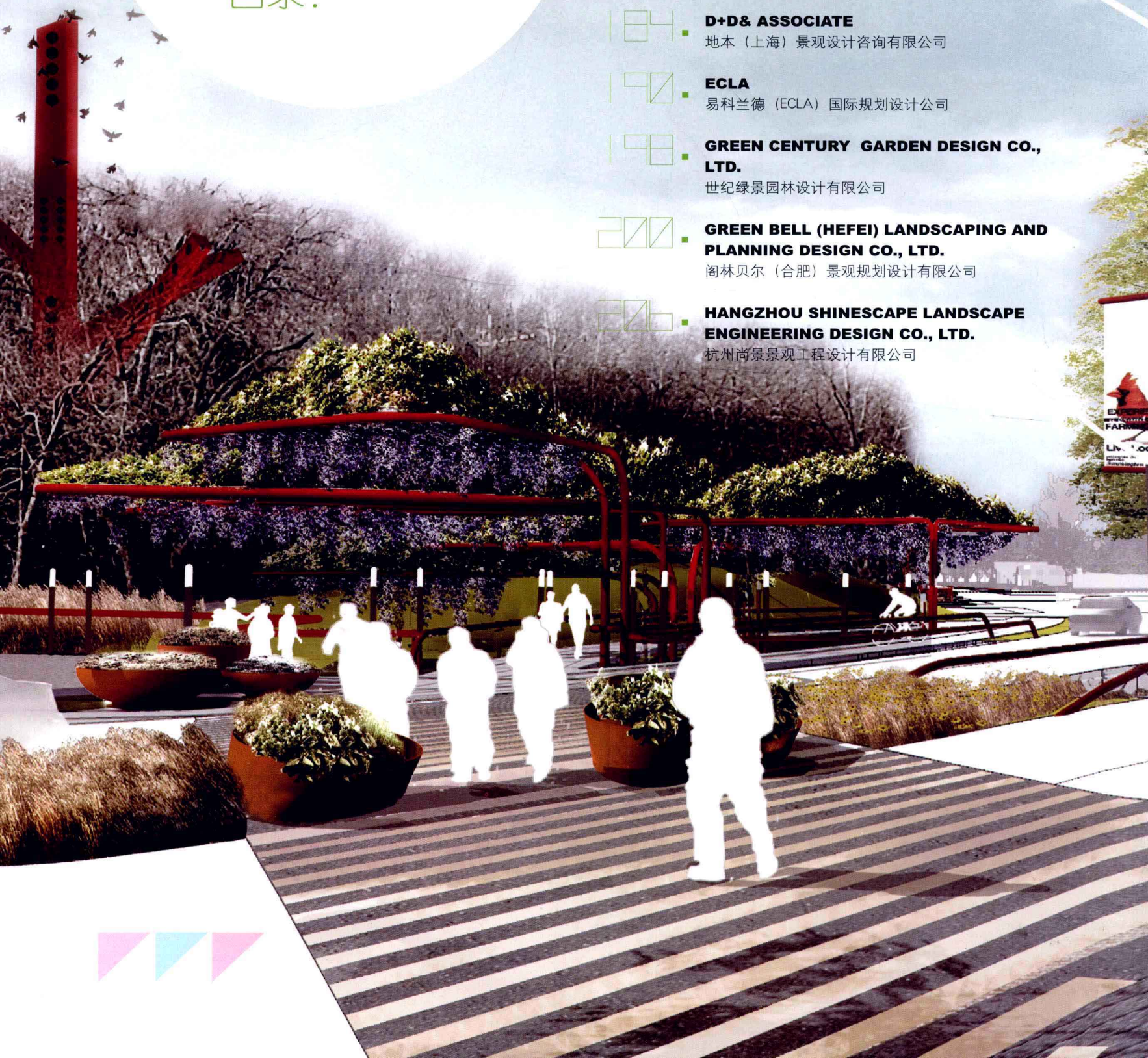
赖纳·施密特景观建筑事务所



CONTENTS

目录:

- 142 ■ **STUDIOS GUANGZHOU TUREN LANDSCAPE PLANNING CO.,LTD.**
广州土人景观顾问有限公司
- 156 ■ **SASAKI ASSOCIATES , INC.**
- 170 ■ **WALLACE ROBERTS & TODD, LLC**
- 174 ■ **WILLIAM CONCEPT DESIGN (WUHAN) CO., LTD.**
澳大利亚威廉规划设计(武汉)有限公司
- 178 ■ **WAA**
WAA
- 184 ■ **D+D& ASSOCIATE**
地本(上海)景观设计咨询有限公司
- 190 ■ **ECLA**
易科兰德(ECLA)国际规划设计公司
- 198 ■ **GREEN CENTURY GARDEN DESIGN CO., LTD.**
世纪绿景园林设计有限公司
- 200 ■ **GREEN BELL (HEFEI) LANDSCAPING AND PLANNING DESIGN CO., LTD.**
阁林贝尔(合肥)景观规划设计有限公司
- 206 ■ **HANGZHOU SHINESCAPE LANDSCAPE ENGINEERING DESIGN CO., LTD.**
杭州尚景景观工程设计有限公司



208 ■

HANGZHOU MODERN ENVIRONMENT ART INDUSTRIAL CO., LTD.

杭州现代环境艺术实业有限公司

214 ■

HARGREAVES ASSOCIATES

218 ■

HUBEI POETIC LANDSCAPE ART AND DESIGN ENGINEERING CO., LTD.

湖北博克景观艺术设计工程有限责任公司

224 ■

LEEDSCAPE ENGINEERING DESIGN CO., LTD.

北京佰禾景观工程设计有限公司 (鑫禾风景)

232 ■

MIKYOUNG KIM

234 ■

MICHAEL VAN VALKENBURGH ASSOCIATES, INC., LANDSCAPE ARCHITECTS

240 ■

MICHAEL VERGASON LANDSCAPE ARCHITECTS, LTD.

迈克尔沃加逊景观建筑师有限公司

244 ■

PROFESSIONAL LANDSCAPE ARCHITECTURE STUDIO

普梵思洛 (亚洲) 景观规划设计事务所

252 ■

SHANGHAI LANGXIANG ARCHITECTURAL PLANNING & DESIGN CO., LTD.

上海朗乡建筑规划设计有限公司

256 ■

SHANGHAI JSNOVO ARCHITECTURAL DESIGN CO., LTD.

上海新景升建筑设计咨询有限公司

264 ■

SHENZHEN BLY LANDSCAPE AND ARCHITECTURE PLANNING & DESIGN INSTITUTE CO., LTD.

深圳市北林苑景观及建筑规划设计院有限公司

272 ■

SAWYER / BERSON ARCHITECTURE & LANDSCAPE ARCHITECTURE. LLP

276 ■

STUDIO LASSO LTD.

282 ■

TOA NORTH SCAPE LTD.

诺风景观设计咨询 (上海) 有限公司

286 ■

TIANLEI INTERNATIONAL LANDSCAPE DESIGN (HONG KONG) CO., LTD.

天磊国际景观 (香港) 有限公司

292 ■

天磊国际设计集团

296 ■

ZHENGHE HENGJI URBAN PLANNING AND DESIGN INSTITUTE

正和恒基城市规划设计研究院

ANDREA COCHRAN LANDSCAPE ARCHITECTURE

安德烈·科克伦景观设计

加利福尼亚州亚历山大谷瓦尔登工作室

WALDEN STUDIOS, ALEXANDER VALLEY, CALIFORNIA

本工程位于俄罗斯河冲积平原上，土壤肥沃深厚，非常适合农业生产。虽然在这里主要种植葡萄，但在历史上，该地区以盛产啤酒花和李子著称，这种特产最初使当地成为了一个李子加工厂。本设计旨在找回人们对该地区那些满山遍野果园的记忆，从而同它的农业历史建立一个明显的联系。

业主是一位热心的艺术赞助人，他购买了这些资产，意在把旧仓库改造成成为他在附近一个大牧场的辅助设施；这家牧场是当地特产雕塑的著名收藏地。结果，瓦尔登工作室被设计成了与艺术相关的办公室、艺术家工作室和出租商业空间这样一个综合体。其场地设计将一个葡萄园和带有艺术设施的农业建筑物结合成为一个整体。

The project is sited in the flood plain of the Russian River, with deep, rich soil ideally suited for agriculture. Although now a prime wine-growing region, historically the area was known for growing hops and prune plums, and this property originally served as a prune-packing plant. The design intention was to draw on the memory of the orchards that once filled the valley in order to create a palpable link with its agricultural past.

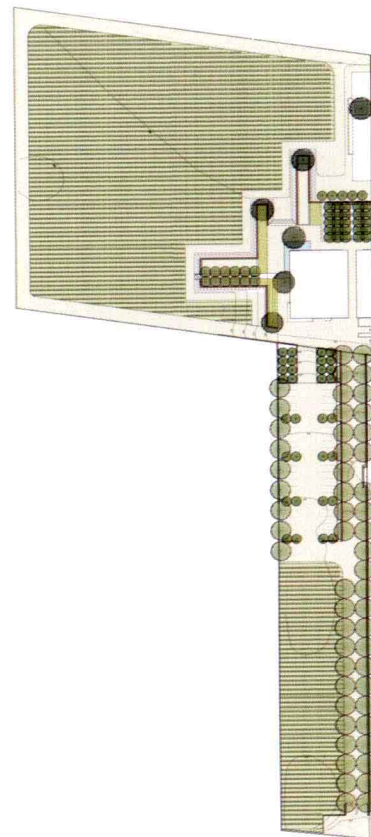
The owner, an avid patron of the arts, purchased the property with the intention of renovating the old warehouse into a support facility for his nearby ranch, which is home to a renowned collection of site-specific sculpture. As a result, Walden Studios is designed as a mixed-use facility with arts-related offices, artist studios and leased commercial space. The site design integrates a working vineyard and its agricultural buildings with the arts facility.

项目地点：亚历山大 设计单位：安德烈·科克伦景观设计

景观设计师：Andrea Cochran, FASLA, Pei-Ying Wang, Sarah Keizer, Katherine Bennett, Alice Chung

LOCATION：Alexander DESIGN UNITS：Andrea Cochran Landscape Architecture

LANDSCAPE ARCHITECT：Andrea Cochran, FASLA, Pei-Ying Wang, Sarah Keizer, Katherine Bennett, Alice Chung





加利福尼亚州旧金山市柯伦住宅

CURRAN HOUSE, SAN FRANCISCO, CALIFORNIA

柯伦住宅使经济适用房更上一层楼，它显示了在目光远见的客户和充满激情的设计团队的支持下能够达到设计质量。因为柯伦住宅的大部分居民都没有私家车，住宅区配备了方便的公交设施，所以客户和建筑师决定不设立停车场地。设计师利用省下的资金在设计中纳入了使人心情舒缓的绿化空间、花园地块和私人阳台。柯伦住宅既是值得拥有的房屋，也是支付得起的房屋。

从技术观点来看，该项目最具挑战性的部分是其屋顶排水系统。由于预算限制，屋顶结构设计只允许在结构平台上使用 6.35 厘米的混凝土顶板。为了实现有效的屋顶排水，需要大量的平台排水沟。设计师在混凝土中创造了一个排水槽网络，从而减少了排水渗透的数量，每一个种植者都能将水直接排放到沟渠里面，消除了种植者排水时滑倒的潜在因素，并且提供了一个敷设灌溉管路的地方。安装了可拆卸的带孔金属盖板，便于接近管路进行维修和排水。

设计的长凳为回收再用木制长凳，比成品长凳便宜得多。景观设计师通过家具制造业朋友的帮助找到一些原木，砍成规定的形状。总承包商同意和几个平常不是其分包商的制造商合作，使最终产品得以实现。从建筑师不愿意放弃为经济适用房项目设立令人愉快的喷泉等设施，到景观设计师设计出这些特色并组织其制造安排，到承包商和制造商使其成为现实，这是一个各方诚信的飞跃。没有上述非传统的方法，设计的关键元素就不会在预算之内得以建成。

Curran House raises the bar for affordable housing, demonstrating the quality of design that can be achieved with the support of a visionary client and a passionate design team. Because most of Curran House's residents don't own a car and the building offers easy access to public transportation, the client and the architect decided not to include onsite parking. With the money saved, the designers were able to incorporate soothing green spaces, garden plots, and private balconies into the design. Curran House is housing which is both desirable and affordable.

The most challenging part of the project from a technical perspective was the drainage on the roof areas. Due to budget constraints, the design of the roof structure only allowed for a 6.35cm inch concrete topping slab over the structural deck. In order to drain the roof effectively an enormous number of deck drains would be required. The designer created a network of channels in the concrete to reduce the number of drain penetrations, allowed each planter to drain directly into the trench, eliminated potential slipping on the planter runoff, and provided a place for irrigation lines to run. Removable perforated metal covers were installed to make the lines accessible for maintenance and allow the water to drain.

The reclaimed wood benches were designed to be less expensive than off-the-shelf benches. The landscape architect enlisted the aid of furniture-making friends to find the logs and hew them into the specified shape. The general contractor agreed to work with fabricators who were not his usual subcontractors in order to achieve the final product. It was a leap of faith for all parties, from the architect who would not give up on amenities such as a fountain for an affordable housing project, to the landscape architect who designed these features and orchestrated their fabrication, and the contractors and fabricators who made it possible. Without this unorthodox approach, key elements of the design could not have been constructed within budget.



项目地点：旧金山 面积：223 公顷 设计单位：安德烈·科克伦景观设计
LOCATION : San Francisco AREA : 223 hm² DESIGN UNITS : Andrea Cochran Landscape Architecture





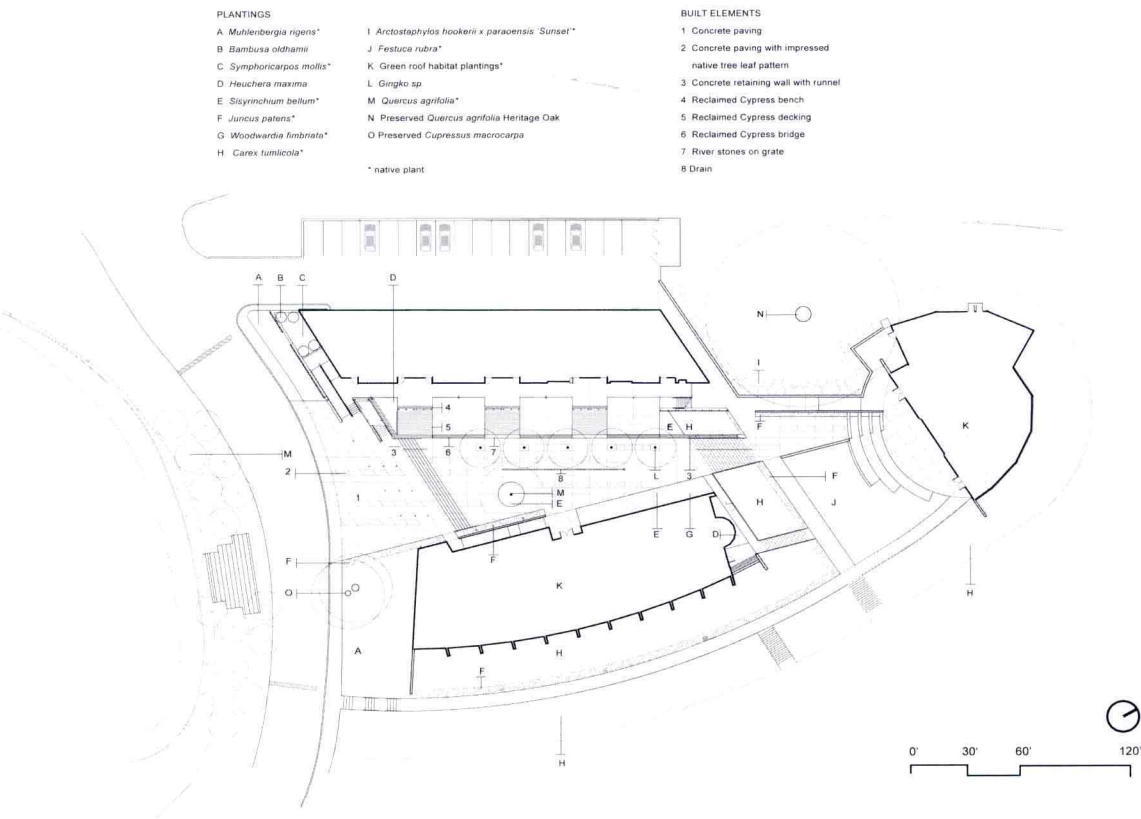


努埃瓦学校

NUEVA SCHOOL

此项目清楚地表明，通过将生活系统和雨水收集完全融入一个小学校园中，就有潜力创造出持久的价值。整个场地都被精心规划成了学生们学习和游乐的空间。学生在景观方面的参与在一定程度上保证了他们能有一种独特的主人翁感。场地对于水的关注的精巧之处在于——巧妙地把雨水收集纳入设计中，使之成为寓教于乐的设施。庭院内部布局简洁，成为了校园里当代建筑设计的一种浑然一体的优美延伸，掩映于地面及绿色的屋顶上葱郁而自然的景观之中。某些地方植物物种用作了装饰，表明了如果为它们（重新）创造出适宜的栖息环境，就能够使其适用于相应的文化背景中。根据某一特定场所的独特属性量身打造的综合、高效场地 / 景观能够提供优越的学习环境，本项目就是一个绝佳的范例。

This project clearly illustrates the potential to create lasting value through the holistic integration of living systems and rainwater into the context of an elementary grade school. The entire site has been crafted as a learning and play space for the students. The involvement of the students in aspects of the landscape offers a level of engagement that gives them a unique sense of ownership. There is a beautiful focus on water—rainwater has been artfully incorporated into the design as a didactic and playful amenity. The simple composition of the courtyard is an elegant, integrated extension of the contemporary building design, enhanced with the lush, naturalistic landscapes at grade and on the green roofs. The use of certain local plant species in an ornamental context illustrates the potential to adapt certain native plants into a cultural setting when the habitat is (re)created for them. The project is an excellent example of how an integrated, high-performance site/landscape can provide a superior learning environment crafted to the unique attributes of a particular place.



项目地点：希尔斯伯勒 设计单位：安德烈·科克伦景观设计
LOCATION: Hillsborough DESIGN UNITS: Andrea Cochran Landscape Architecture





