

度本图书 Dopress Books 编译



## 图书在版编目 ( CIP ) 数据

世界风尚·材质与装饰: 全2册 / 度本图书编译. —武汉: 华中科技大学出版社, 2012. 1

ISBN 978-7-5609-7250-3

I. 世… II. 度… III. 室内设计—世界—图集 IV. TU238

中国版本图书馆CIP数据核字 (2011) 第149860号

## 世界风尚·材质与装饰 (2)

度本图书 编译

出版发行: 华中科技大学出版社 (中国·武汉)

地 址: 武汉市珞喻路1037号 (邮编: 430074)

出 版 人: 阮海洪

责任编辑: 周 虹

责任校对: 孙淑婧

责任监印: 张贵君

装帧设计: Dopress Books

印 刷: 北京图文天地制版印刷有限公司

开 本: 1270mm×965mm 1/16

印 张: 26.5×2

字 数: 600千字

版 次: 2012年1月第1版第1次印刷

定 价: 728.00元 (US \$179.99) (全2册)



投稿热线: (010)64155588-8000 zhg\_hong@163.com

本书若有印装质量问题, 请向出版社营销中心调换

全国免费服务热线: 400-6679-118 竭诚为您服务

版权所有 侵权必究

Office ❖ Public & Culture ❖ Health ❖ Exhibition ❖ Residence

# Global Style

## Materials & Decoration

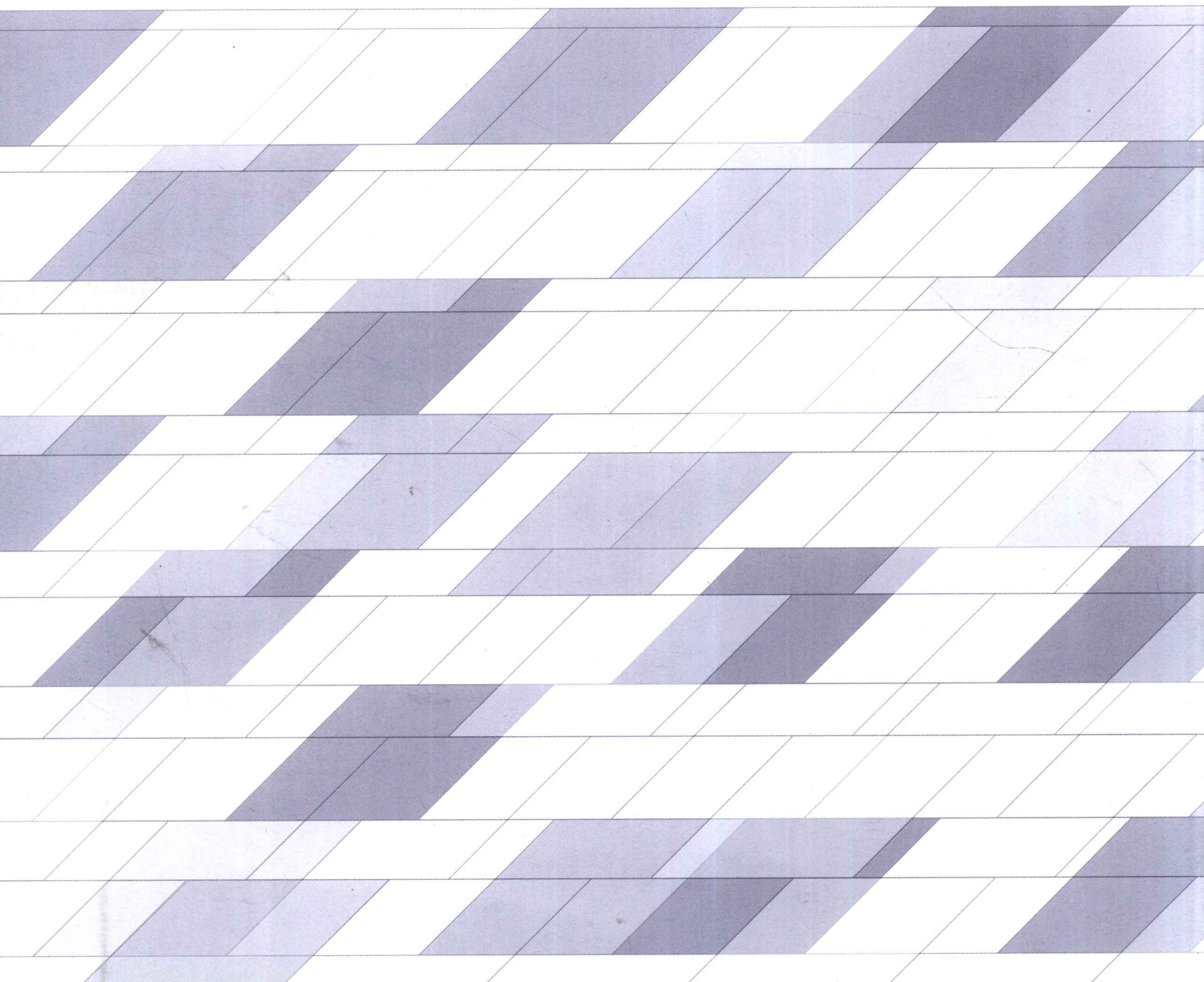
世界风尚 · 材质与装饰 (2)

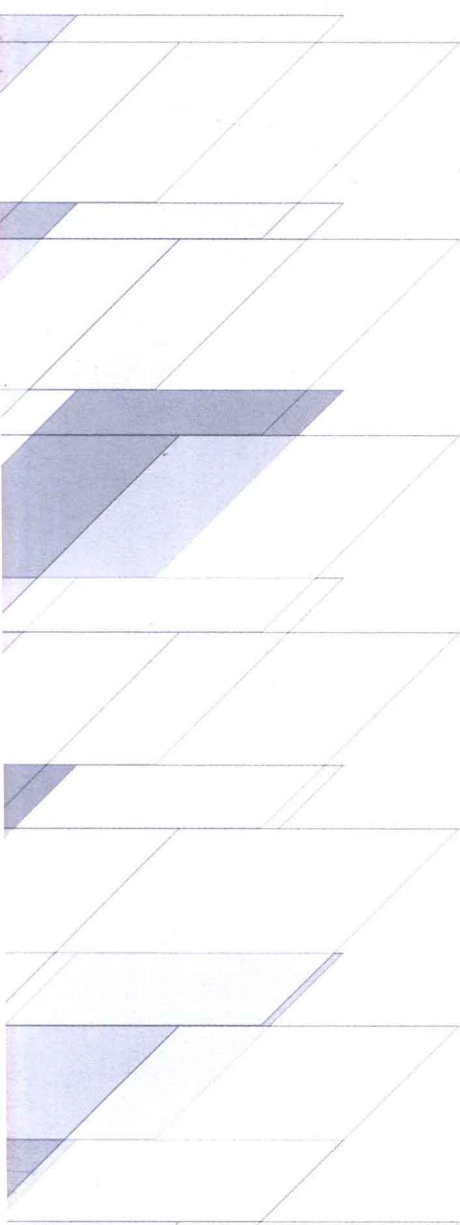
度本图书 Dopress Books 编译

# Global Style

## Materials & Decoration

世界风尚·材质与装饰(2)





The continued edition, *Global Style: Materials & Decoration* come out with eager anticipation after the widely acclaimed first edition of *Global Style: interiors & colours* was published. The new one expands the original concept "Cultural Fusion and Multiple Style", at the same time, pays more attention to share the information about materials, decoration and technology which contains great practical value and provides readers a one-stop guide to see the highlights of selecting and matching today's popular or cutting-edge materials in the worldwide interior works. All the important information was shown in the form of summary and coloured chart, which is clear at a glance for the readers.

Selected from hundreds internationally renowned architects, the 140 wonderful projects including hotel, bar, club, salon, beauty, spa, yoga, restaurant, shop, office, Lounge, cinema, library, museum, school, theater, clinic, hospital, pharmacy, exhibition and residence featured in the book cover a wide range of styles, such as African, Asian, European, Latin, North American, Australian and other regions. Created under the growing cross-culture background, mixing ancient and modern, Eastern and Western, these works set off a unique style, leading a trend of global high-end design.

随着第一版《世界风尚·室内空间与色彩》的广受好评,《世界风尚·材质与装饰》在期待中应运而生。在延续其“兼收并蓄、文化交融”这一理念的同时,着重为读者分享了材料、装饰与工艺方面极具实用价值的信息,让读者有机会“一站式”地了解到全球各地新近室内设计作品中各种新尚材料的选用及材质搭配上的设计亮点。所有这些重要信息都以内容提要 and 彩色图表的形式标注在书内,一目了然,以方便读者参考。

来自世界各地的几百位著名设计师为本书精心推举了140个当代室内设计佳作。从亚、非、欧、南美、北美、大洋洲等具有不同地域特色的设计,到酒店、酒吧、会所、沙龙、美容、SPA、瑜伽、餐厅、商店、办公、休息室、影院、图书馆、博物馆、学校、剧院、诊所、医院、药店、展示、住宅等各种功能空间,都有所涵盖。这些厚载人文、融汇中西的作品在文化跨界、演变的进程中独树一帜、风格自成,不断引领全球高端设计风潮!

# C O N T E N T S

Africa 非洲 Asia 亚洲 Europe 欧洲 North America 北美洲 Oceania 大洋洲 South America 南美洲

## Office 办公 ❖❖

|                         |                 |     |
|-------------------------|-----------------|-----|
| Desque Office           | the Netherlands | 010 |
| Cardboard Office        | France          | 016 |
| DRU Fabriek             | the Netherlands | 020 |
| Twinkling Space         | China           | 028 |
| Pixel in Beijing        | China           | 034 |
| Bank Office             | Japan           | 038 |
| Face to Face            | Singapore       | 044 |
| Leo Burnett Office      | Singapore       | 052 |
| SOR Office              | Japan           | 058 |
| Turkish DO&CO           | Turkey          | 062 |
| VOV Building            | Korea           | 068 |
| Aftonbaldet Mediecenter | Sweden          | 076 |
| Bearscave Office        | France          | 080 |
| Google Office           | Sweden          | 086 |
| Lego Office             | Denmark         | 094 |
| Paper Cloud Office      | France          | 100 |
| White Mountain          | Sweden          | 104 |
| ACBC Office             | Mexico          | 108 |
| Bohemian Embassy        | Canada          | 116 |
| Liberty Towers          | Canada          | 120 |
| National Foods          | Australia       | 128 |

### Public & Culture 公共&文化 ❖❖

|                      |                 |     |
|----------------------|-----------------|-----|
| Branch in Changchun  | China           | 138 |
| Bibliotheek Almere   | the Netherlands | 144 |
| Hjoering Library     | Denmark         | 148 |
| Library in Brabant   | the Netherlands | 154 |
| Tampa Museum         | USA             | 160 |
| Disney Museum        | USA             | 166 |
| Kremlin Concert hall | Russia          | 172 |
| Privium ClubLounge   | the Netherlands | 178 |
| Hongodai Education   | Japan           | 184 |
| Erika-Mann Schopl    | Germany         | 190 |
| School in Berlin     | Germany         | 196 |
| Masaryk University   | Czech Republic  | 200 |
| School Theatre       | USA             | 204 |

### Health 健康医疗 ❖❖

|                        |       |     |
|------------------------|-------|-----|
| Aohal Clinic           | Japan | 210 |
| MD.net Clinic          | Japan | 216 |
| Orthopaedics Clinic    | Japan | 220 |
| Takemura Dental Clinic | Japan | 224 |

# C O N T E N T S

Africa 非洲 Asia 亚洲 Europe 欧洲 North America 北美洲 Oceania 大洋洲 South America 南美洲

|                       |         |     |
|-----------------------|---------|-----|
| GKK Dental Ambulatory | Austria | 228 |
| Alpha Offices         | Brazil  | 232 |
| Isle of Elise         | Germany | 236 |
| Medical Center        | Italy   | 242 |
| Conde Lumiares        | Spain   | 246 |
| Farmacia Aguadulce    | Spain   | 250 |
| Farmacia Zubia        | Spain   | 256 |
| Pharmacy Appiano      | Italy   | 260 |

## Exhibition 展示 ❖❖

|                    |           |     |
|--------------------|-----------|-----|
| Art 4d Pavilion    | Thailand  | 266 |
| Austrian Pavilion  | China     | 270 |
| ICP Expo 2010      | China     | 274 |
| La Citta' Fragile  | Italy     | 278 |
| Nowhere Exhibition | Italy     | 282 |
| ROCA Exhibition    | Germany   | 286 |
| Yes is More        | Denmark   | 292 |
| Digital World      | USA       | 296 |
| Cascade Coil       | Australia | 300 |

# Global Style

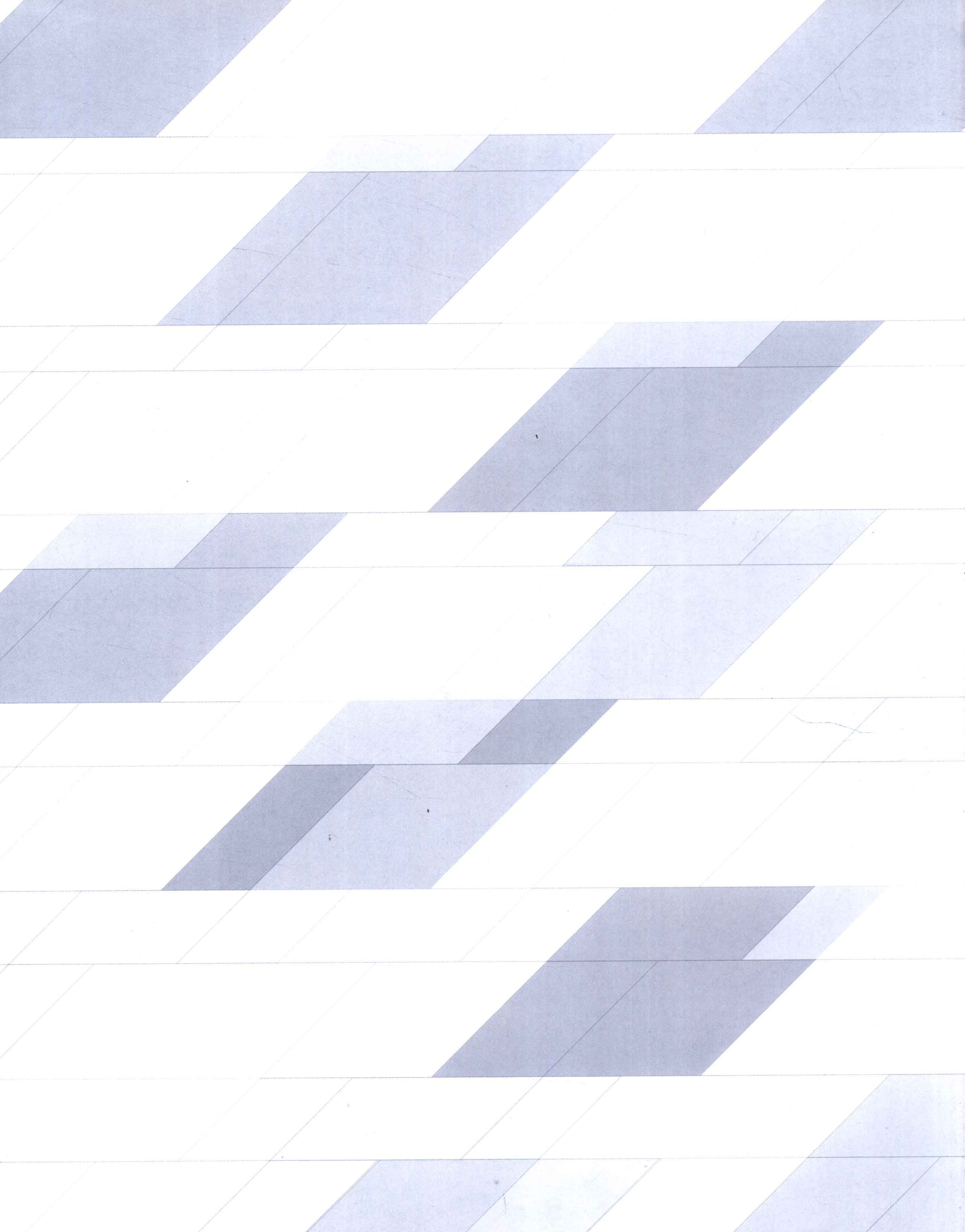
## Materials & Decoration

世界风尚·材质与装饰(2)

|                     |           |     |
|---------------------|-----------|-----|
| DEX Showroom        | Italy     | 304 |
| Corian Studio       | China     | 308 |
| I-WAY Complex       | France    | 314 |
| Schiavello Showroom | Australia | 320 |

## Residence 住宅 ❖❖

|                   |             |     |
|-------------------|-------------|-----|
| Hacienda Duplex   | Egypt       | 328 |
| White Residence   | Egypt       | 332 |
| 31 Blair Road     | Singapore   | 338 |
| Inside & Outside  | Japan       | 348 |
| KKC Residence     | Japan       | 356 |
| KRE House         | Japan       | 364 |
| Sentosa House     | Singapore   | 372 |
| Summer Villa      | China       | 380 |
| Swiss Chalet      | Switzerland | 386 |
| Laranjeiras Villa | Brazil      | 392 |
| Atlantic Suite    | Canada      | 398 |
| Gold Street House | Australia   | 404 |
| Perforated House  | Australia   | 408 |



办公.**Office**  
010-135 GLOBAL**STYLE**

# Desque Office

## Europe

Name of Project / 项目名称:

Desque Office

Location / 地点:

Eindhoven, the Netherlands

Completion Date / 竣工时间:

2009

Interior Design / 室内设计:

M+R interior architecture

Photography / 摄影:

STUDIO DE WINTER,

Herman de Winter

Client / 客户:

Desque

Materials / 材质:

Polished Concrete

Oak Timber

Glass

Stainless Steel

HPL

Office outfitter Desque found accommodation in the "Strijp-S" area in Eindhoven. This imposing building formerly housed the Philips factory. M+R interior architecture brought some new ideas to this industrial listed building.

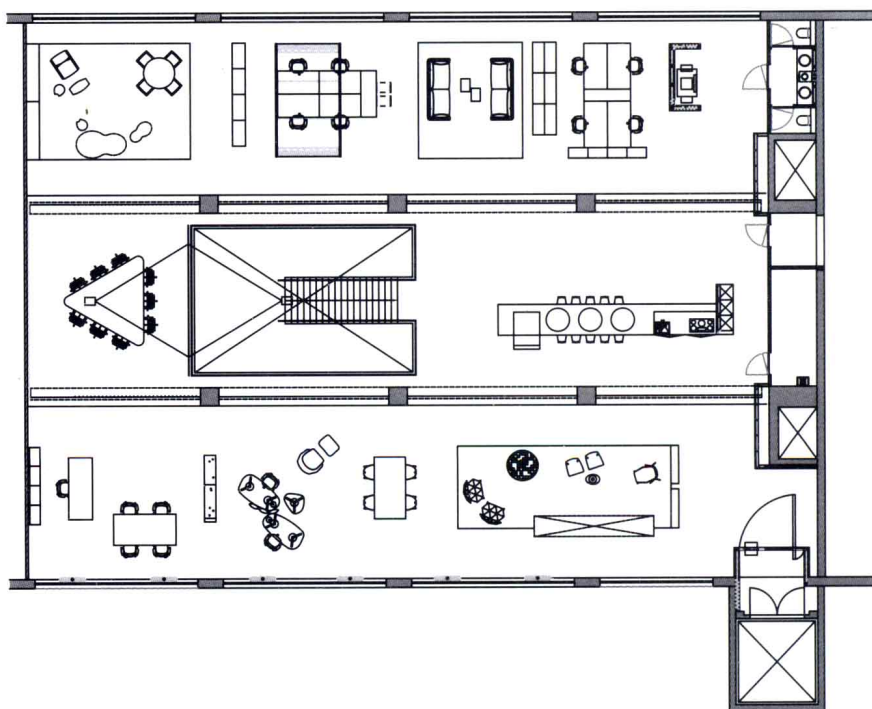
The main inspiration during the refurbishment was based on the transformation from production area to a home base for a creative design and interior decorating company. M+R interior architecture decided on clean lines and sustainable materials, and make the new interior blends naturally into the industrial environment.

The striking concrete structure was bared and kept in view. The prominent entrance consists of a large empty space with a sculptural stairway. The stairs lead to an area specially designed for meetings, relaxing and consultations, which in turn seamlessly merges into an elevation, from where you have a splendid view of the furniture and design products in the Desque range. In this almost unspoilt industrial environment, these products definitely will come into their own.

Desque办公装饰公司新办公地点设在埃因霍温市“Strijp-S”地区，其建筑原本是飞利浦工厂。M+R建筑设计事务所以全新的设计理念对这座工业保护建筑进行了翻修。

翻新过程中的设计重点在于如何将生产车间转变为一个体现创意设计和室内装饰业务的办公环境。设计团队决定采用简洁的线条和可持续使用的材料，使新办公空间与原有工业环境和谐相融。

设计师保留了原有建筑的混凝土结构，并使其暴露在外。入口由空旷宽阔的空间和一座气势宏伟的楼梯构成。经过楼梯可以直接通往用作会议室、休息区和洽谈区的二楼空间，各区域自然衔接为一体、浑然天成。在这里，人们可以看到Desque公司的各种家具和设计产品。在这个几乎未受破坏的工业环境中，这些产品定会受到越来越多消费者的青睐。











In the bar area, the beautiful furniture making from white oak timber and green HPL are naturally blended into the industrial environment, forming a strong contrast with the original concrete.

酒吧休闲区内，由白橡木和绿色防火板材料制成的漂亮桌椅自然地融入到硬朗的工业环境中，同原有建筑中的混凝土结构形成鲜明对比。



