

# 摩登样板间

Modern Showflat

ID Book 工作室 编

Modern Minimalism

# 现代简约



华中科技大学出版社  
<http://www.hustp.com>

MODERN  
SHOWFLAT

# 摩登样板间

MODERN MINIMALISM

## 现代简约

ID Book工作室 编



华中科技大学出版社

<http://www.hustp.com>

中国·武汉



# PREFACE I

## Understandings of Interior Design and Space Art

The guiding ideology of interior design should be displaying space art to the largest degree. The forms of space art should be displayed through new theories, new technologies, new materials and new crafts.

Traditional Chinese architectural design styles and Fengshui culture have a great influence on modern interior designs.

The history of architecture and the development of related design techniques affect the forms of space art immensely.

Space art stems from the development of cultural art and science and technologies.

Space art has social and cultural characteristics. Different kinds of public activities require different space forms.

Space art is a unity of material requisite and cultural demands.

Space art presents the principles of the beauty of forms to the largest degree.

The foundation of space art is the physical environment of the space and the human ecological environment.

Space art is fashion art. The vitality of space roots in the presentation of fashion.

Space must integrate with building structures organically to unfold the vitality of decorations.

Space is an organic unity of interior and exterior spaces.

Space format symbols and various kinds of space artistic forms with strong visual impact can be extracted from the space art of every historical period.

Modern interior design pays more attention to individual styles, traditional languages, material application and regional cultures.

Listed above are some of the understandings of the author from his more than 20 years' experience in interior design and architectural design.

Chief Designer of Guoguangyiye Decoration Institution

Ye Bin

## 对室内设计与空间艺术的理解

室内设计的指导思想就是应该最大限度地展示空间艺术形态，空间艺术形态更多地通过新理论、新技术、新材料、新工艺得以体现。

中国传统的建筑设计风格及风水文化深刻地影响着现代室内设计。

建筑的历史以及与此相关的设计技术的发展，深刻地影响着空间艺术形态。

空间艺术源自文化艺术与科学技术的发展。

空间艺术的要领源自东西方不同传统建筑空间的概念。

空间艺术具有社会文化性，各种不同的公共活动需要各自不同的空间形态。

空间艺术是物质需求和文化需求的统一体。

空间艺术最大化地展示形式美的原则。

空间艺术的基础是空间的物理环境及人为生态环境。

空间艺术即时尚艺术，空间的生命力来源于时尚的展现。

空间必须与建筑结构有机地结合，才能展现装饰的生命力。

空间是内部、外部空间的有机统一体。

每一历史时期的空间艺术都能提炼出具有视觉冲击力的空间造型符号及各式各样的空间艺术形态。

现代室内设计更关注个性风格、传统语言、材质应用及地域文化。

以上是作者从事空间室内设计和建筑设计二十多年来的点滴体会。

国广一叶装饰机构首席设师

叶斌

序言 I

Modern Minimalism

## PREFACE II

### Design from Heart Makes a New Life

Everyone has a dreamy house in his mind. It might just be some intangible sensations of certain tastes, certain moods or certain circumstances. But from people's natural instincts, no matter how spacious or luxurious the house is, it might still not be the one people really want.

Model house is the carrier and one form of expressions of commodity houses. The house buyers would also go to it for reference while decorating the houses.

Every property developer would focus on the decoration of the sales center and the model house all through the construction period. Party A requests the designer to attract as many consumers as possible within the allowable circumstances. And for the designer, in order to meet the requirements of Party A, unconsciously they would be confined into the regulations of Party A. With the development of our country's real estate industry, a group of mature designers emerge and define the developing orientation of interior design industry. They can get rid of the "directions" of the property owners and Party A and carry out better analysis and investigations towards the project. With meticulous analysis towards the identity of the house owners, their life habits and the family environment, custom-made living conditions and interior environment can be produced which match this building project. Thus they can get Party A's satisfaction after meeting the requirements of the consumers.

Seen from current situation, modern minimalism, elegant European style and Chinese Zen charms are the three styles that are the most welcome among the house owners. Among them, modern style is people's most favorite one due to its practical, concise, cozy and decent decorative characteristics. No matter for what style, if the designers start the people-oriented design conception from his heart, let the people enjoy the space atmosphere they are in and display the life concepts, this project would be a successful one and would become a model in the real sense.

Editor  
2011.10.28



## 心设计，新生活

每个人心中都有一个自己梦想的家，它可能只是某种味道、某种心情、某种状态等一些无形的感受。但从人的本性来说，多么宽敞、奢华的房子或装饰都无法启及心境中的某个触点。

样板间是商品房包装的载体和表现形式之一，也是购房者装修时的参照。

每个开发商对于售楼处和样板间的装修基本上是整个建造环节中的重中之重，甲方给予设计师的要求就是在条件允许的条件下最大化地吸引顾客，而设计师为了考虑甲方的需要，不自觉地就被束缚在甲方的条条框框中。我国房地产业发展到今天，已经有一大批成熟的设计师成长起来，并引领着室内设计的发展方向。他们已经能够摆脱业主或者甲方的“指点”，对项目的分析、调查更加到位，对住户的身份、生活习惯、家庭环境进行细致的解析，定制出能够和该楼盘匹配的生活状态和室内环境，从而去满足不同顾客的需求。满足了顾客的需求，自然就可以获得甲方的满意。

就目前的趋势来看，现代简约风格、典雅欧式风格、中式禅韵风格是广大业主最喜欢的三种风格。尤其是现代风格，以其简洁实用、舒适大方的装饰特点，备受人们的喜爱。不管是何种风格，只要设计师能够以人为本，从人的内心出发，能够让居住其间的人们与空间的氛围达成共识，将生活理念得到具体的呈现，那么，这个案子肯定就会成功，并成为真正意义上的样板、典范。

编者

2011.10.28

序言II

Modern Minimalism

# CONTENTS

008	金叶岛第十区6栋411样板房
014	黑白·流韵
020	花卉记忆——凯德置地御金沙交 楼标准样板房
026	都市漫步——凯德置地御金沙交 楼标准样板房
032	顺德海悦新城
036	素装の艳抹——梧桐城邦
040	心皈泊岸
046	现代品味 都市情怀
052	白色记忆·凯德置地御金沙创意样板房
058	翠湖绿洲花园
062	黑白·条码
066	金色港湾样板间F户型

070	金色港湾样板间D户型
076	光谷世界城加州阳光样板间
080	空间的流畅之美
086	秀水华庭·咖啡加奶的味道
092	金井梧桐秋叶黄
096	济南样板房B型
100	纯色空间
106	恒润御景湾样板房
112	来自游艇的灵感
118	背后的故事
122	金沙西园样板间
126	会呼吸的房子
130	现代气质
136	星河世纪城
140	巍廉伍拾式
146	厦门联发五缘湾一号样板房

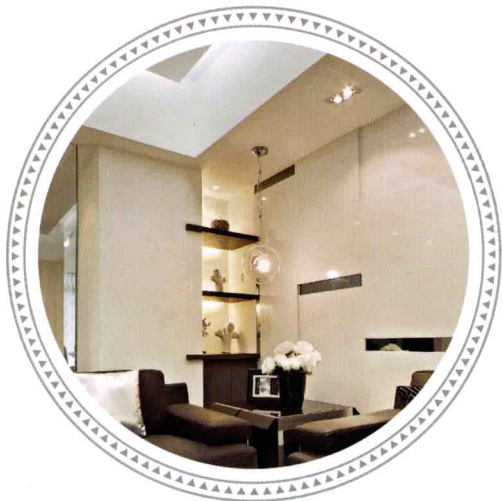
Modern Minimal

# 目录

152	卓越维港	238	阿尔卡迪亚
156	汇璟花园B28栋302	242	环球中央公寓·现代简约
160	公寓新诠释·加减生活	246	南宁大观天下D3-2样板房
166	安静的小岛	252	广州逸涛雅苑样板房
170	大华西溪风情	256	现代美居·原色生活
178	隐逸低调的华丽	260	中庚城某住宅
182	功能与美的角逐	264	大儒世家
186	金广东海岸 王先生宅	268	爱·尚
190	长沙广汇兰亭峰景1期1-G样板间	272	奢华诱惑
196	金色港湾5期样板间	276	黑白演绎的精彩
200	下午·江晖景苑郝宅	282	春江花城
206	万科第五园	288	合生·世界村样板间
210	公园道一号	292	晶金花羽
214	融桥华府	296	浪漫满屋
220	蓝色构想	300	悠闲假期
226	句容		
232	灰色回归		



# 金叶岛第十区6栋411样板房



设计单位：汕头市华盛环境艺术设计有限公司

设计师：李仕鸿

项目地点：金叶岛国际花园

项目面积：163.85 m<sup>2</sup>

装饰材料：丁香米黄石板、水晶白石板、水曲柳饰面板、进口墙纸、黑镜、皮革

本案秉承实用、简洁的设计理念，考虑到业主的喜好，营造出清新淡雅的环境氛围。本案有着合理的结构布局，以及协调、统一的整体搭配。代表高贵、优雅以及神秘的黑和朦胧、纯粹、雅致的白，加以金属摆件的点缀，把整个空间变成了时尚的舞台。

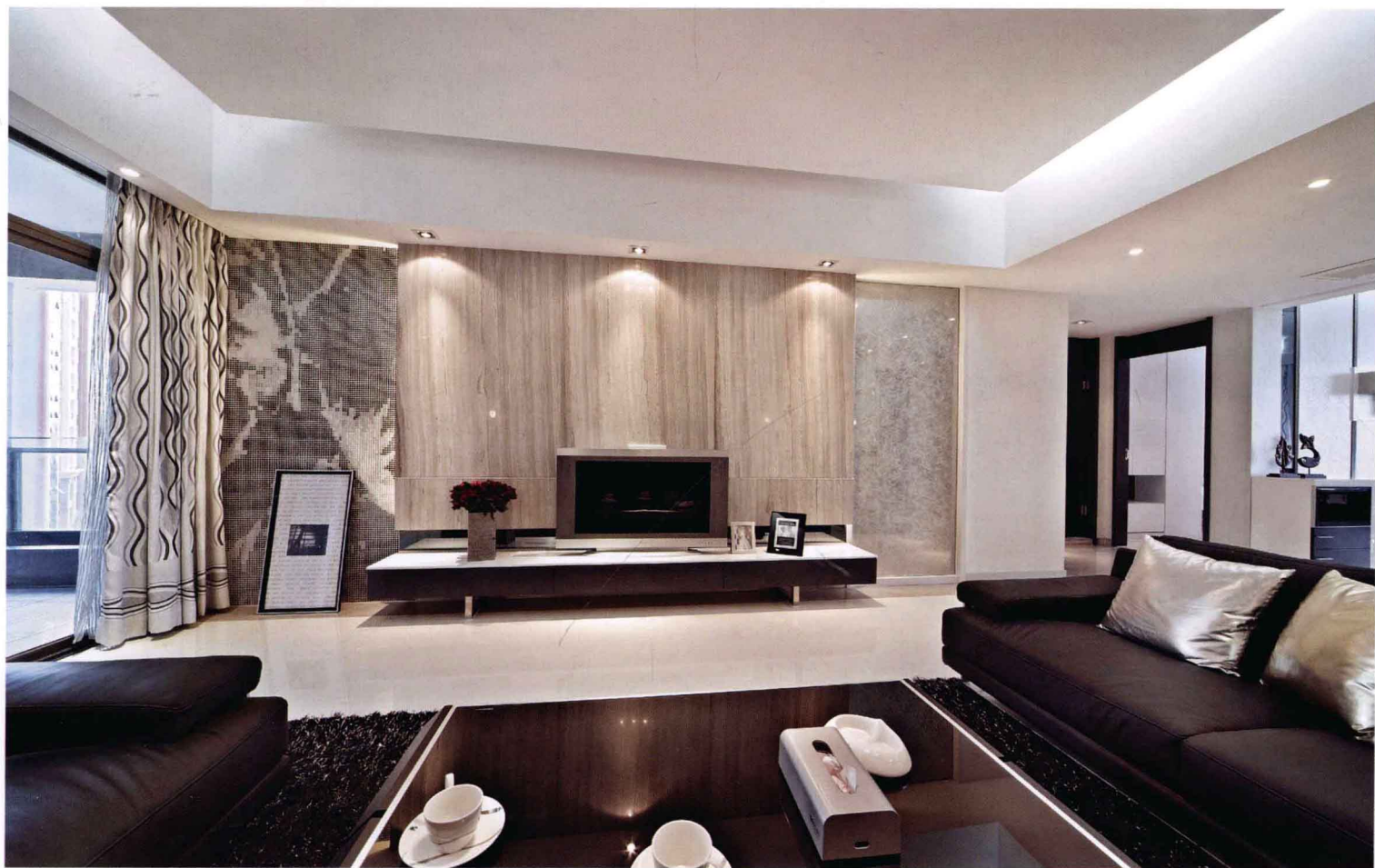
客厅以白色为主色调，看起来沉稳、大方，再搭配深色家具及配饰，精致而浪漫。白色的窗帘和纯黑沙发的对比使人眼前一亮。整个客厅用简单的亮色来营造出一种明媚感，将整个客厅的拘谨氛围一扫而空。

餐厅中极具个性的吊灯，将整个空间映照得格外明亮，灯带昏黄的灯光打破了空间的冷调氛围，再配以现代感十足的餐桌、餐椅，营造出一种简约而温馨的空间。

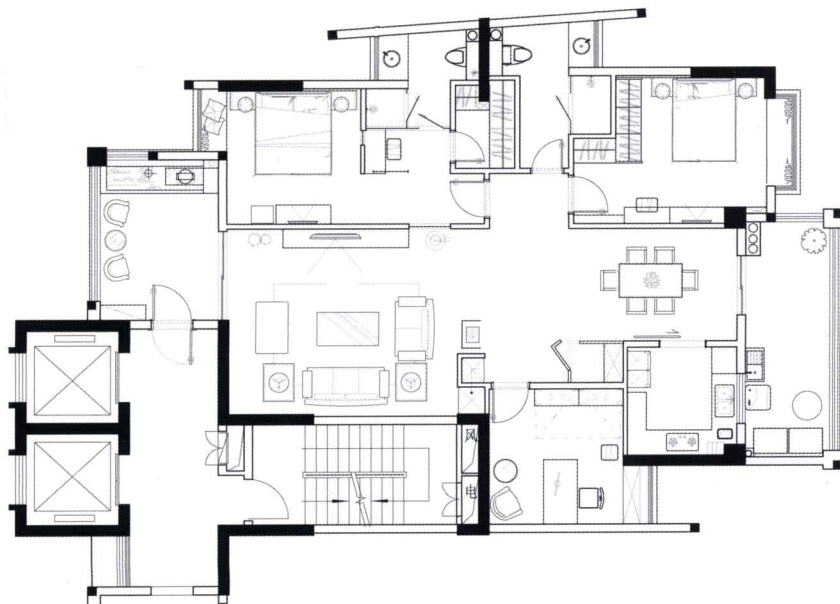
黑、白色调搭配的卧室看似简单，但细节处的处理却颇具匠心。设计师在这个空间把“你中有我，我中有你”的设计理念发挥得恰到好处，使黑与白在这个空间的配比显得非常协调。避免了黑与白在视觉上的冲撞，使整个空间看起来简洁却又融洽。













Taking into account the preferences of the owners, this apartment is designed to be practical and succinct, thus built up a fresh and elegant atmosphere. The design has a reasonable structure and layout, and coordination with a unified style. Black, which is noble, elegant and mysterious, and white, which is hazy, pure and elegant, decorated with metal ornaments made the whole space fashionable.

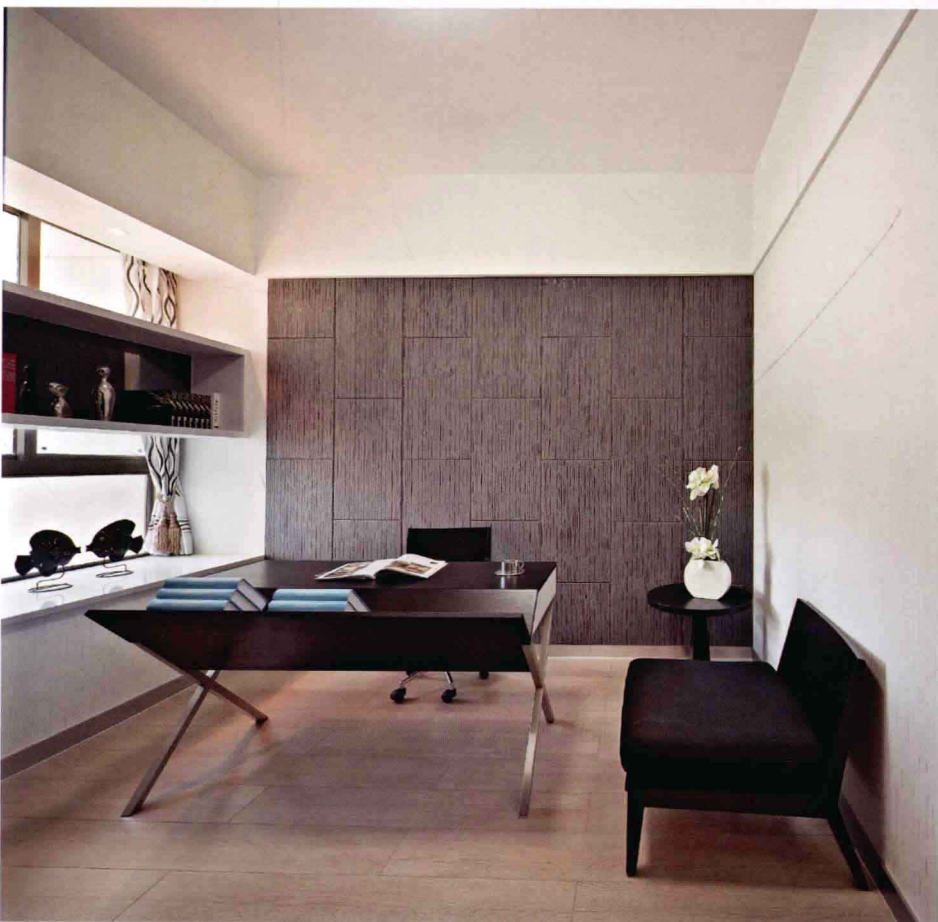
Living room is mainly designed in white, so it looks calm, generous, and matched with dark furniture and accessories, and presents delicate and romantic taste. The match of white curtains and black sofas makes the outstanding comparison. The simple bright colors of the living room create a beautiful mood which well balanced the grounded style.

The chandelier with unique style in the dining room illuminated the entire room was exceptionally bright, and the dim light breaks cold atmosphere. Decorated with stylish modern dining table, chairs, created a succinct and intimate space.

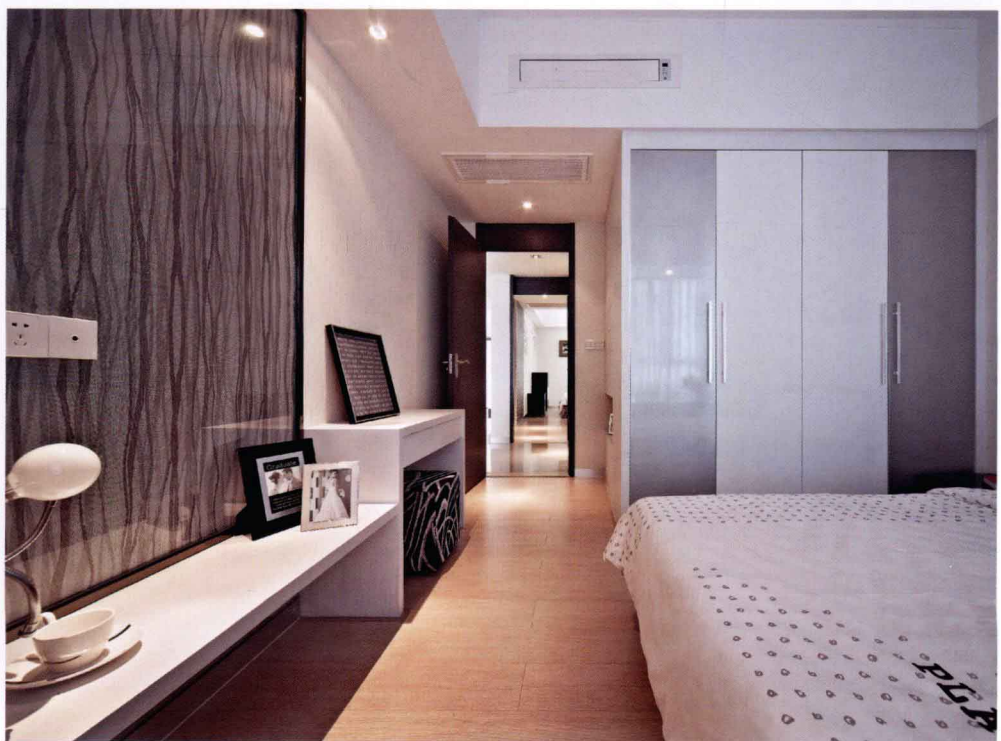
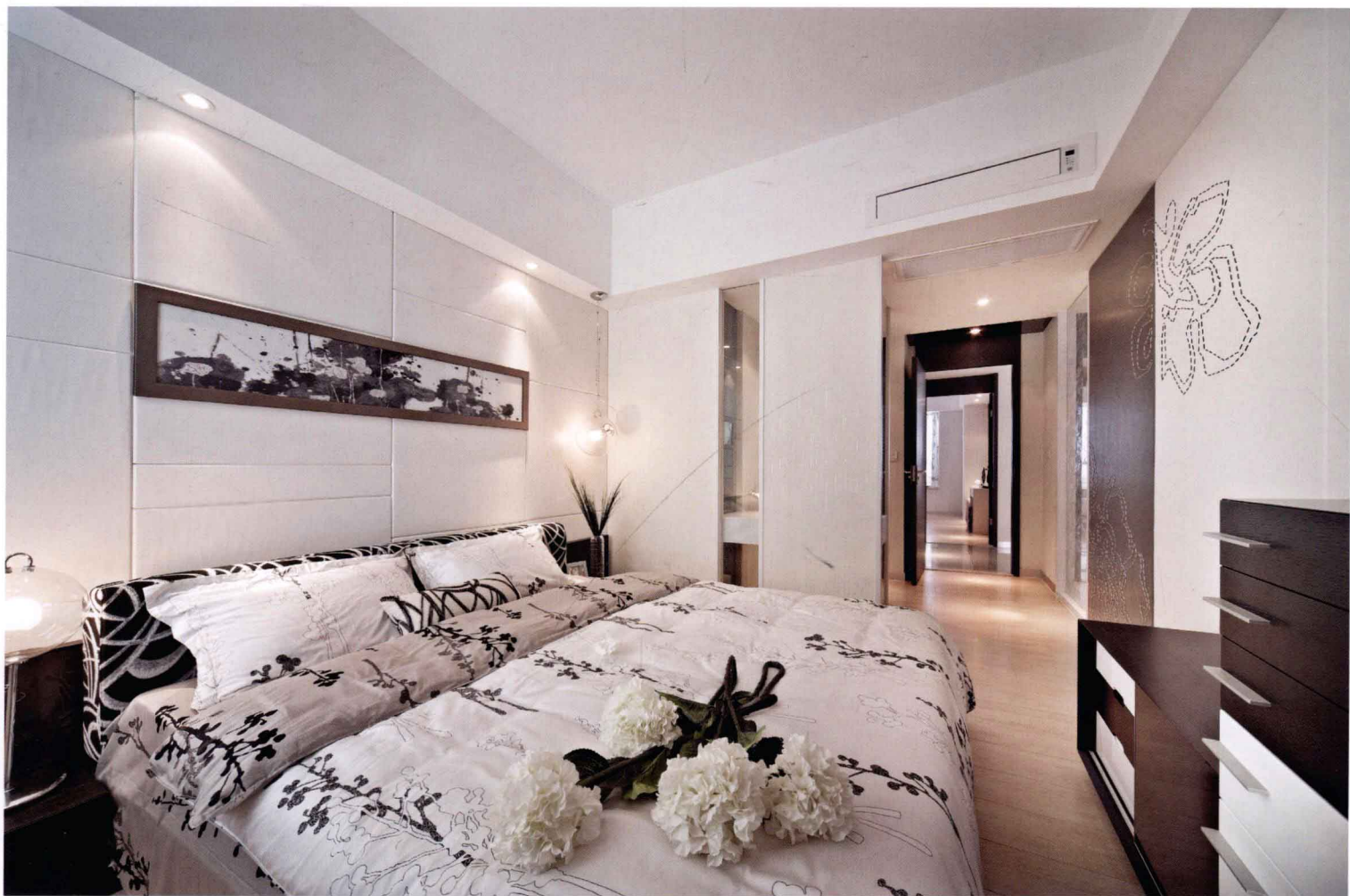
Black and white matched bedroom seems a simple work, but the details of the design really need additional effort. The designer well interpreted the design philosophy "you have me, I have you", so black and white ratio in this space is very coordinated. The visual collision of black and white is avoided, so the whole space looks succinct and harmonious.





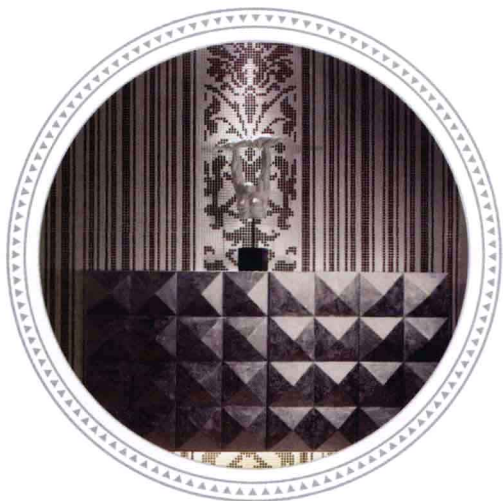








# 黑白·流韵



设计单位：福建国广一叶建筑装饰设计工程有限公司

方案审定：叶斌

设计师：李超

项目面积：120 m<sup>2</sup>

项目地点：福州

主要材料：雪花白大理石、硬包、壁纸、黑镜、陶瓷锦砖



简洁的线条与纯净的色彩，是这个家居空间给我们的视觉感受。当繁杂与喧嚣充斥在周遭的时候，这样一个明朗素雅的环境或许能给我们带来一种情感的愉悦。黑、白色调是这里的主旋律，它们有着自信率真的表情。既收纳了复古的稳重，又焕发着时尚的活力。

此外，得益于开放式结构与软性间隔产生的视觉变化，我们在不同角度欣赏这个空间时，黑、白两种色彩所占据的比例不但没有喧宾夺主，还印证着色彩对空间的强大装饰性和塑造力。

Simple lines and pure colors bring good visual effects to us. This elegant and bright space will bring a pleasant feeling to people who are surrounding with noisy and complications. Connection of black and white is the main theme of the design. They reflect confidence and frankness. It is a connection of classical steady and modern vigor.

Besides, profiting from open structure and soft material scene, using black and white represents colors have great influence on decoration and design.







