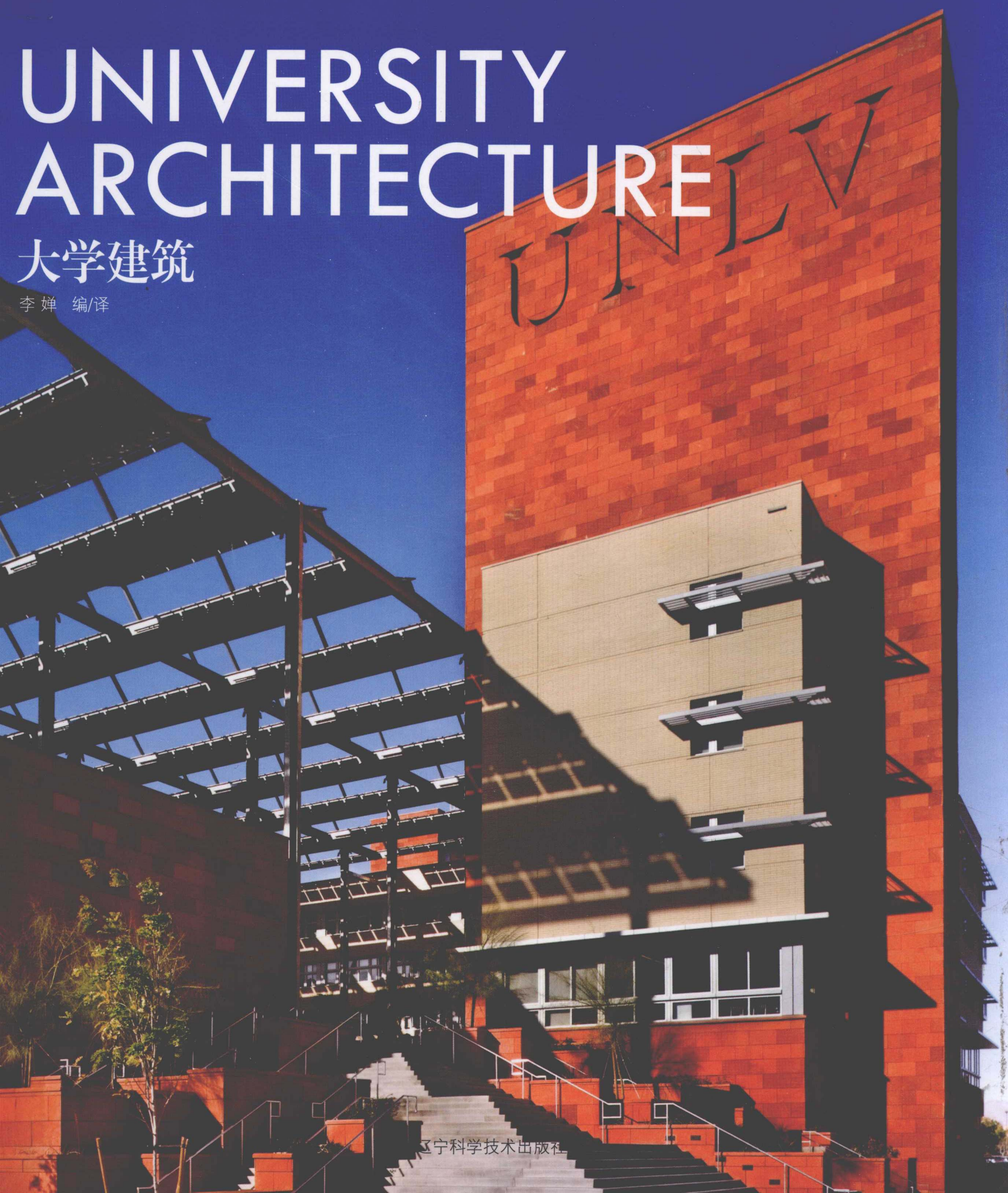


UNIVERSITY ARCHITECTURE

大学建筑

李 婵 编/译



辽宁科学技术出版社

UNIVERSITY ARCHITECTURE

大学建筑

李 婵 编/译

辽宁科学技术出版社

图书在版编目 (C I P) 数据

大学建筑 / 李婵编译. -- 沈阳: 辽宁科学技术出版社, 2011.4

ISBN 978-7-5381-6563-0

I. ①大… II. ①李… III. ①高等学校—建筑设计
IV. ①TU244.3

中国版本图书馆CIP数据核字 (2011) 第019160号

出版发行: 辽宁科学技术出版社

(地址: 沈阳市和平区十一纬路29号 邮编: 110003)

印 刷 者: 利丰雅高印刷 (深圳) 有限公司

经 销 者: 各地新华书店

幅面尺寸: 245mm × 290mm

印 张: 36

插 页: 4

字 数: 50千字

印 数: 1~2000

出版时间: 2011年4月第1版

印刷时间: 2011年4月第1次印刷

责任编辑: 陈慈良

封面设计: 赵 聪

版式设计: 赵 聪

责任校对: 周 文

书 号: ISBN 978-7-5381-6563-0

定 价: 268.00元

联系电话: 024-23284360

邮购热线: 024-23284502

E-mail: lnkjc@126.com

<http://www.lnkj.com.cn>

本书网址: www.lnkj.cn/uri.sh/6563

Introduction

前言

With the advancement of research and education in the 21st century, tertiary education has been posing an increasingly higher demand for its facilities. In response, concepts like high technology, energy-efficiency and sustainability have successfully found their way to the architecture for universities, institutes and colleges. The book aims at presenting the present-day campus facilities by introducing a number of recently-completed projects, some of which were built for internationally-renown universities and institutes such as Georgia Institute of Technology, University of Edinburgh and National University of Singapore.

University Architecture is the second book among the Architecture Book Series published by DMP. The book covers forty-four projects from all over the world, including America, Europe, Asia, Australia and Africa (mostly from North America and Europe). Here you may find contributions from world-renown architects such as KPF and FOA. Most of the featured projects have received various awards, such as AIA Awards, RIBA Awards and Chicago Athenaeum Awards.

The carefully-selected projects are categorised into four chapters: Teaching & Administration Facilities, Research & Laboratory Facilities, Mixed-use Facilities, and Other Facilities. In each chapter, ten or twelve projects are presented in an alphabetical order. Each project is introduced with plenty of images, a brief statement, and several plans or diagrams which contribute to the professional reference value of the volume. In the index, contact information of each architecture firm involved is given.

当高等教育进入21世纪，随着科研、教学水平的飞速发展和进步，我们对高等教育的场馆也提出了越来越高的要求。高新技术、绿色环保、可持续发展，这些理念正在越来越多地体现在大学建筑的设计中。如今的世界大学建筑呈现出怎样的景象？本书将通过近年竣工的一批优秀的大学项目（其中不乏国际知名学府，如佐治亚理工学院、爱丁堡大学、新加坡国立大学等），全面、翔实地为您展现。

《大学建筑》是我社推出的“建筑系列丛书”之一，集中展现了44个来自世界各地的大学建筑项目，地域上涵盖了五大洲，以欧美为主。书中有世界顶级建筑公司的作品（如KPF建筑事务所、FOA建筑事务所），且多数项目曾获各类奖项，包括国际知名的美国建筑师联合会大奖（AIA）、英国皇家建筑师协会大奖（RIBA）、芝加哥雅典娜神庙奖（Chicago Athenaeum）等。

在内容上，本书按照建筑的功能用途分为四章，分别是：教学楼、实验楼、综合楼、其他。每章10或12个项目，按照其英文原名的字母顺序编排。除了大量的图片、翔实的说明之外，每个项目还配有多张技术图，包括平面图、立面图、剖面图、透视图、详图等，具有丰富的专业参考价值。书后的索引中提供了设计师的联系方式及其收录项目所在页码，方便查找。

Contents

目录

Teaching & Administration Facilities

教学楼

Alvah H. Chapman Jr. Graduate School of Business <i>Florida International University</i>	6
佛罗里达国际大学小阿尔瓦·查普曼商学院研究生院	
Labovitz School of Business and Economics <i>University of Minnesota, Duluth</i>	14
明尼苏达州大学德卢斯分校拉波维兹工商与经济学院	
Law Faculty at Bukit Timah Campus <i>National University of Singapore</i>	20
新加坡国立大学武吉知马校区法学院大楼	
Mode Gakuen Cocoon Tower <i>Mode Gakuen University</i>	26
东京Mode大学蚕茧大厦	
New College Building at Greenwich Peninsula <i>Ravensbourne</i>	34
雷文斯本大学格林威治半岛新教学楼	
Schapiro and Hollander Halls <i>Williams College</i>	42
威廉姆斯大学夏皮罗与霍兰德大楼	
Potterrow Development <i>University of Edinburgh</i>	46
爱丁堡大学保特罗教学楼	
Ross School of Business <i>University of Michigan, Ann Arbor</i>	52
密歇根大学安娜堡分校罗斯商学院	
Sino-Italian Ecological and Energy Efficient Building (SIEEB) <i>Tsinghua University</i>	60
清华大学中意清华环境节能楼	
The Suttie Centre for Teaching and Learning in Healthcare <i>University of Aberdeen</i>	66
阿伯丁大学萨蒂医疗卫生教学中心	
Walter Cronkite School of Journalism & Mass Communication <i>Arizona State University</i>	72
亚利桑那州立大学沃尔特·克朗凯特新闻与大众传媒学院	
Willard J. Walker Hall, Walton College of Business <i>University of Arkansas</i>	78
阿肯色州大学沃尔顿商学院威拉德·J·沃克教学楼	

Research & Laboratory Facilities

实验楼

Anschutz Medical Campus Research 2 <i>University of Colorado, Denver & Health Sciences Centre</i>	86
科罗拉多州大学丹佛分校保健科学中心安修茨医学研究2号楼	
Berrick Saul Building <i>University of York</i>	92
约克大学贝里克·索尔大楼	
Centre for Sustainable Energy Technologies (CSET) <i>The University of Nottingham</i>	96
宁波诺丁汉大学可持续能源技术中心	
Chemical Sciences Building <i>University of New South Wales</i>	102
新南威尔士大学化学科学楼	
Clinic Campus Laboratory Building <i>Eppendorf University Clinic</i>	106
埃彭多夫大学临床医学部	
Interdisciplinary Science and Technology Building I <i>Arizona State University</i>	112
亚利桑那州立大学跨学科科技1号楼	
James I Swenson Science Building <i>University of Minnesota, Duluth</i>	118
明尼苏达州大学德卢斯分校科学院实验楼	
Marcus Nanotechnology Research Centre <i>Georgia Institute of Technology</i>	122
佐治亚理工学院马库斯纳米技术研究中心	
Robert and Clarice Smith Building at the Wilmer Eye Institute <i>Johns Hopkins University</i>	128
约翰·霍普金斯大学威尔默眼科学院罗伯特与克拉莉斯·史密斯大楼	
The Mountbatten Building <i>University of Southampton</i>	134
南安普敦大学蒙巴顿大楼	
UMH Laboratories <i>Miguel Hernández University (UMH)</i>	140
米格尔·赫尔南德斯大学UMH实验楼	
Van Leeuwenhoek Laboratory <i>Delft University of Technology</i>	146
代尔夫特科技大学凡·列文虎克实验楼	

Mixed-use Facilities

综合楼

Alsion

University of Southern Denmark154

南丹麦大学阿尔申多功能大厦

Broadcasting Place

Leeds Metropolitan University158

利兹城市大学广播大厦

College of Business & Computer Science

Carnegie Mellon University in Qatar164

卡内基·梅隆大学卡塔尔分校工商与计算机科学院

Communication, Culture and Technology (CCT) Buliding

University of Toronto, Mississauga170

多伦多大学米西索加分校信息文化科技大楼

Greenspun Hall, Greenspun College of Urban Affairs

University of Nevada, Las Vegas176

内华达州大学拉斯维加斯分校格林斯潘城市事务学院大楼

Physicum and Exactum

Helsinki University182

赫尔辛基大学物理楼与数学、统计、计算机科学楼

Rural Clinical School

The University of Queensland190

昆士兰大学乡村临床医学院

Samundra Institute of Maritime Studies

Indian Maritime University196

印度海事大学萨曼德拉海事研究院

Texas A&M Engineering College

Texas A&M University at Qatar202

得州农工大学卡塔尔分校工程学院

The Blizzard Building

Queen Mary College, University of London210

伦敦大学玛丽皇后学院布利泽德大楼

Other Facilities

其他

Architecture Department Studio Building

Woodbury University218

伍德布里大学建筑系工作室

Green Lighthouse

Copenhagen University226

哥本哈根大学绿色节能采光房

Helen S. Schaefer Poetry Centre

The University of Arizona234

亚利桑那大学海伦·S·沙佛诗歌中心

Master Plan and Architecture Design (Phase I)

Agostinho Neto University240

阿戈斯蒂纽·内托大学校园规划与建筑设计（一期工程）

Mensa Moltke – Student Canteen

Karlsruhe University248

卡尔斯鲁厄大学马奇学生食堂

Residence Halls

Reed College254

里德学院学生宿舍

Student Centre & Field House

Davenport University260

达文波特大学学生中心及田径场

Tietgen Dormitory

Copenhagen University268

哥本哈根大学蒂根宿舍楼

University Pavilion

University of Cincinnati274

辛辛那提大学校园活动馆

Wildcat Recreation Centre

California State University, Chico280

加利福尼亚州立大学奇科分校野猫娱乐中心

Index286

索引

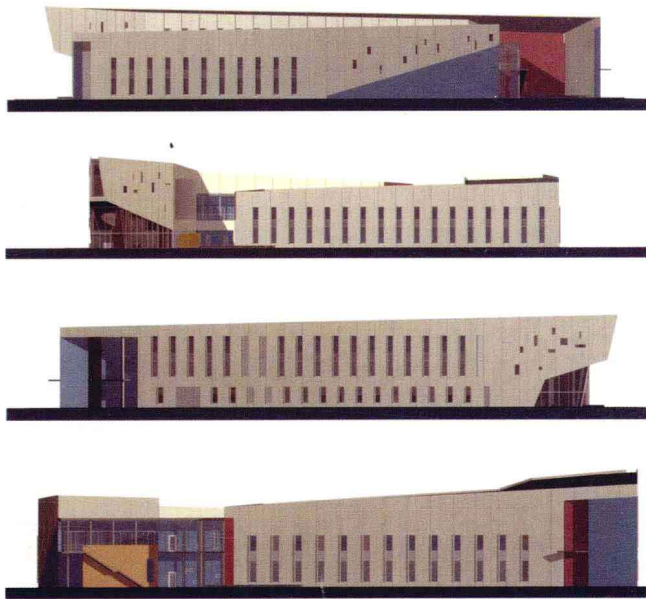
佛罗里达国际大学
小阿尔瓦·查普曼商学院研究生院

Alvah H. Chapman Jr. Graduate School of Business

Florida International University

Architect: Kohn Pedersen Fox Associates **Location:** Miami, Florida, USA **Completion:** 2008 **GFA:** 9,000 m²
Photography: H.G. Esch, Smith Aerial Photography & Claudia Uribe

建筑设计: KPF建筑事务所 项目地点: 美国 佛罗里达 迈阿密 建成时间: 2008年 建筑面积: 9000平方米 图片摄影: H.G.埃施、史密斯空中摄影公司、克劳迪娅·乌里维



Elevations
立面图

1. Aerial view
2. South view
3. Main entrance of the building

1. 鸟瞰图
2. 建筑南面
3. 正门



The identity of the Alvah H. Chapman Jr. Graduate School of Business at Florida International University in Miami merges a strong link to the Americas with the image and actuality of a modern facility.

The building starts at two storeys in height and spirals around the courtyard to reach approximately three storeys at the board room, above the main entrance lobby. The new business school will have two faces: to the exterior, it will be wrapped in a precast concrete panel system with three levels of sandblasting to create texture and pattern. Within the courtyard and in the slivers of spaces between the building bars, borrowing from the Florida vernacular, it holds vividly-coloured stucco walls, a palette inspired by pre-Columbian art to honour the cultural heritage of the largely Latin and Hispanic student body. The building is designed to be environmentally site-specific, with window patterns, arcades, and sun screens designed to address the predominantly hot Miami climate.

The phased design creates two distinct communities – one for students, another for faculty – linked by proximity, formal expression and materials. Phase One houses classrooms, administrative offices, a multipurpose facility, a 300-seat auditorium and student support spaces. Phase Two contains academic centres and faculty offices.

The first courtyard is anchored by a grand staircase, which recalls Mayan stepped structures and provides an informal gathering place for students and faculty. Classrooms are accessed through an open-air arcade, taking advantage of Miami's subtropical climate. The second courtyard, delineated by a water basin, forms an enclave for faculty offices.

Oriented to optimise and capture the prevailing winds from the west, the buildings are sliced at their corners to temper and ventilate the landscaped interior courtyards. In conjunction with water basins and dense plantings, the breezeways ensure that the courtyards are comfortable, even during the hottest hours of the day. By night, the open corners reveal the illuminated courtyards to the surrounding campus, creating a welcoming and dynamic environment for the many students who attend evening classes at the school.

位于迈阿密的佛罗里达国际大学小阿尔瓦·查普曼商学院研究生院的形象，通过现代的设施，跟美国的形象紧密相连。

这座建筑从两层的高度开始，围绕庭院盘旋上升，达到大约3层的高度，那里是会议室，在主入口大厅的上面。这所全新的商学院有两种外立面：外部由预制水泥板包裹，有3层的喷砂处理，以产生质感和图案。庭院内部，在建筑钢筋之间的各个狭长空间内，借用了佛罗里达当地的建筑风格，采用的是色彩明艳的粉刷墙壁，用这种前哥伦比亚时代的艺术是为了呼应这里大量的拉丁、西班牙、葡萄牙裔的学生的文化遗产。这座建筑的设计特别关注环境方面，特别考虑到了所处的特定环境，窗户制式、连拱廊、遮阳屏风都是为应对迈阿密的炎热气候而特别设计的。

这是一个分段设计，创造出截然不同的两段：一部分给学生，一部分给教师。两部分通过接近、形态上的表现和材料连接在一起。第一部分包括教室、管理办公室、多功能大厅、能容纳300人的礼堂，还有学生活动空间。第二部分包括几个学术中心和教师办公室。

第一个庭院有一段巨大的楼梯，使人想起玛雅人的建筑结构，同时又为学生和教师提供了一个非正式的聚

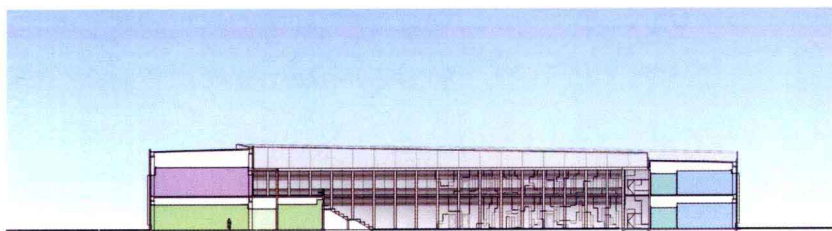
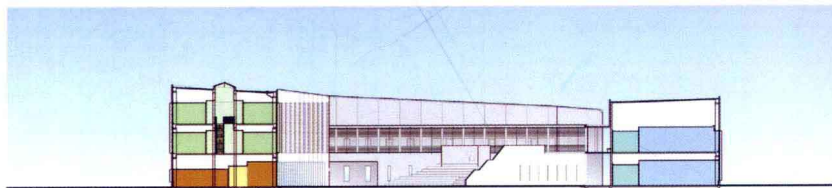






1. Entrance to the courtyard
2. Courtyard
3. Circulation space
4. Signage in the lobby

1. 庭院入口
2. 庭院
3. 交通走道
4. 大厅标识



Sections
剖面图

会场所。通过一段无顶连拱廊就来到教室，这种连拱廊特别适合迈阿密的亚热带气候。第二个庭院以水池为主要特色，为教师办公室创造出一块飞地。

建筑的朝向设计是为了最佳地利用这里的西风，建筑的角都经过切割，为了使内部景致优美的庭院的通风更好。除了水池和密集的植物，还有微风能保证庭院的舒适度，即使在一天中最热的几个小时。夜晚，开放的各个角向周围的校园展示着里面有照明的庭院，营造出一种动感的环境，仿佛在召唤着上晚课的学生走进来。

Awards:

Chicago Athenaeum Museum of Architecture & Design, American Architecture Awards, 2008

Construction Association of South Florida Craftsmanship Awards, 2008

所获奖项:

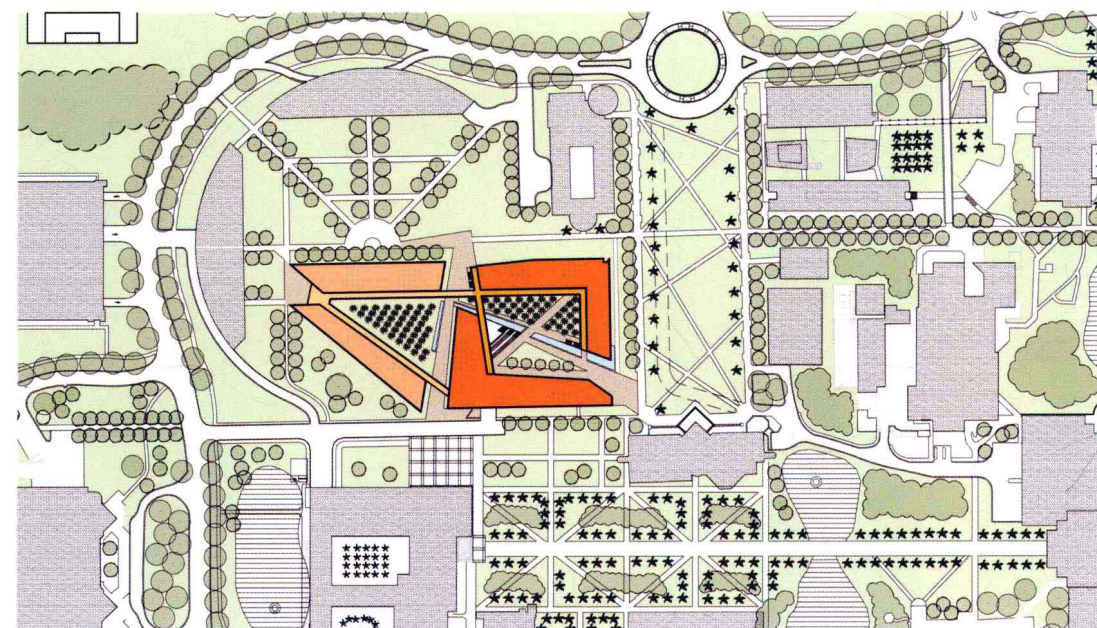
2008年芝加哥雅典娜神庙奖——美国建筑奖

2008年南佛罗里达州建筑协会技术奖

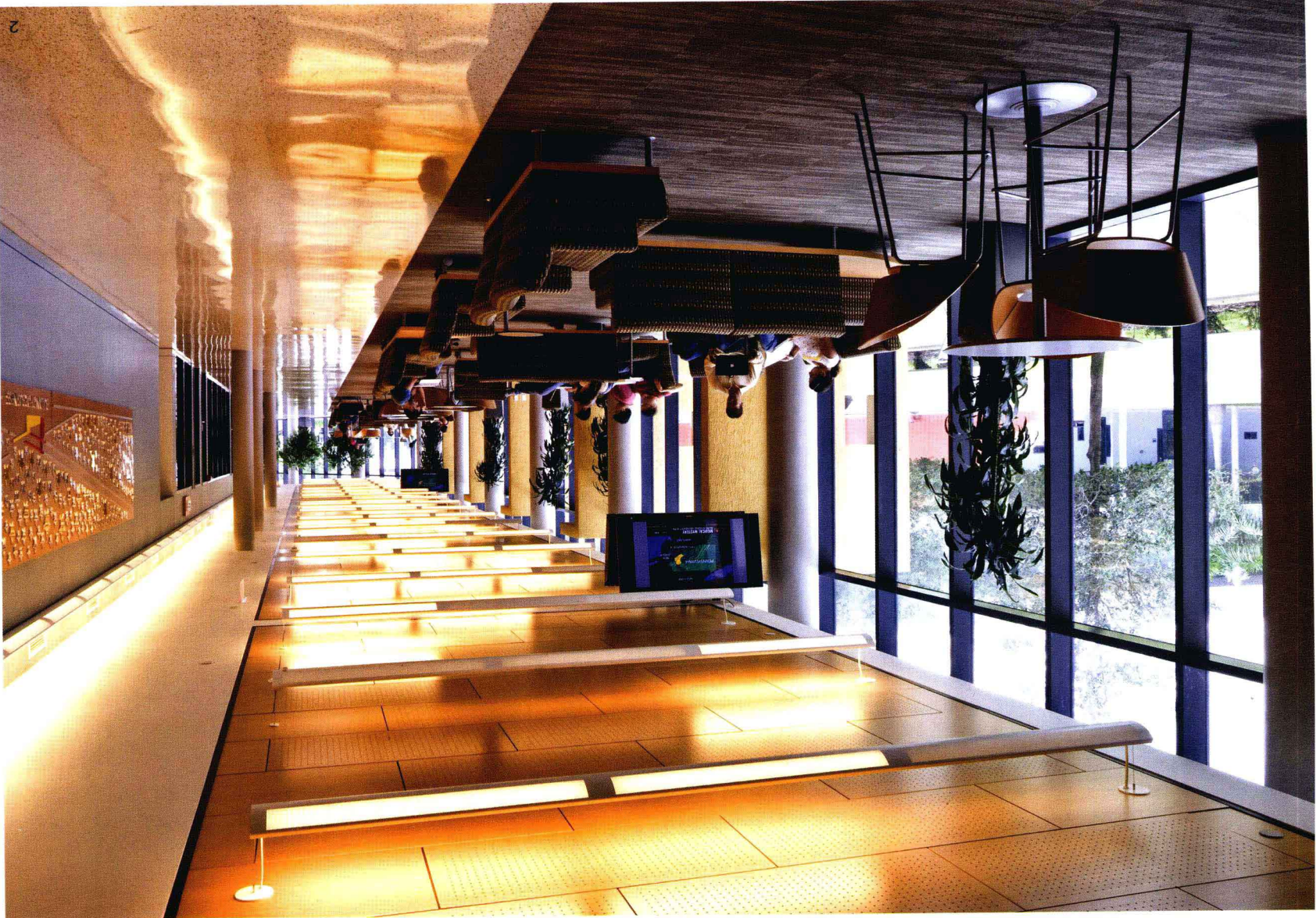


1. 300-seat auditorium
2. Common space

1. 能容纳300人的礼堂
2. 公共空间



Site plan
总平面图



Ground floor plan
一层平面图

- Public circulation
- Classrooms
- Break-out rooms
- Student spaces
- Event spaces
- Office
- Support
- 公共交通
- 教室
- 休息室
- 学生休闲空间
- 活动空间
- 办公室
- 辅助空间







1. Multipurpose facility
2. Multipurpose facility
3. Classroom

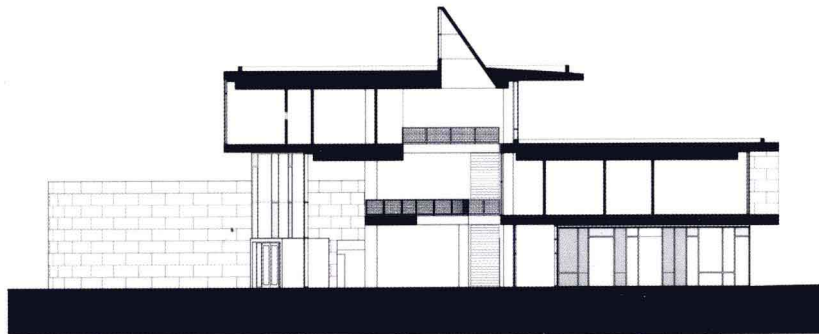
1. 多功能厅
2. 多功能厅
3. 教室

明尼苏达州大学德卢斯分校 拉波维兹工商与经济学院

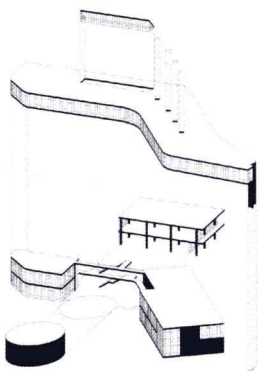
Labovitz School of Business and Economics University of Minnesota, Duluth

Architect: Perkins+Will **Location:** Duluth, Minnesota, USA **Completion:** 2008 **NFA:** 6,200 m²
Photography: James Steinkamp / Steinkamp Photography

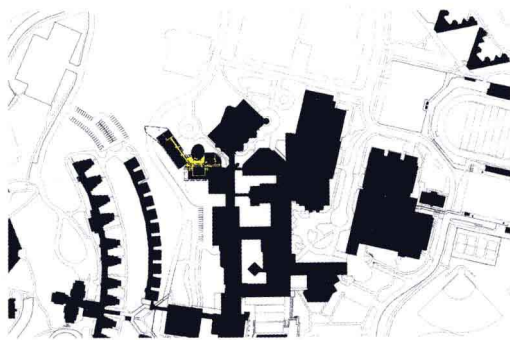
建筑设计：珀金斯+威尔建筑事务所 项目地点：美国 明尼苏达州 德卢斯 建成时间：2008年 实用面积：6200平方米
图片摄影：詹姆斯·斯坦坎普（斯坦坎普摄影公司）



Section
剖面图



Structural analysis
结构分析图



Site plan
总平面图

1. Aerial view
2. South entrance
3. Front view
1. 鸟瞰图
2. 南侧入口
3. 建筑正面



The existing campus of the University of Minnesota Duluth was organised around a series of connected classroom buildings along a north-south axis. The resulting mega-building, while succeeding in providing protection from harsh northern Minnesota winters, failed to create separate identities for the various schools housed within. The new Labovitz School of Business and Economics, positioned at the north end of the campus, shifts to an east-west axis in order to give more definition to the campus, especially as it is approached from the north. It also begins to define a quadrangle between the academic buildings to the east and residential buildings to the west.

The various programmatic components of the building are articulated both in their massing and their material expression. A two-storey base of administrative and instructional spaces, clad in weathering steel, slips under two horizontal floating concrete planes that define the faculty offices. The offices extend over Kirby Drive where the concrete wraps down to the ground to form a gateway to the campus. Entry to the building is from the north, into a glazed two-storey lobby that is the space between an elliptical auditorium and administration and instructional spaces. A three-storey circulation spine connects the lobby and existing buildings to the south.

The building's material palette of weathering steel and exposed concrete evokes Duluth's industrial history.

明尼苏达州大学德卢斯分校原校区的布局主要是沿南北轴分布的一系列教学楼。这个巨大的建筑群虽然能够抵御明尼苏达州北部冬季的严寒，但却不能让其中各个学院的建筑体现自身的特征。新的拉波维兹工商与经济学院坐落在校园北端，转而采取东西向轴线，让校园景致更加丰富多彩，而且该建筑还是从北面进入，这就更强化了这层含义。这座建筑同东边的教学楼和西边的住宅楼一起，界定出一个四边形院落。这座建筑包含多种功能用房，这从其体量和材料上都能体现出来。底层是两层的管理和教学空间，采用耐候钢覆层，上面是两层的混凝土楼板，是教职工办公室。办公区跨越柯比车道，水泥板在车道处向下延伸至地面，形成进入校园的一个大门。这座建筑的入口朝北，从入口进入一个玻璃幕墙的大厅，高两层，介于一座椭圆形礼堂和管理、教学空间之间。一条三层高的交通走道将大厅和南面的原有建筑连接起来。这座建筑选取的材料，包括耐候钢和外露的混凝土，体现了德卢斯的工业历史。

Awards:

World Architecture News, Design Award for Education, 2010

所获奖项：
2010年《世界建筑新闻》教育类建筑设计奖



