

# NEW VISION ON HOUSE

## 別墅新視野

深圳市海閱通文化傳播有限公司 編

53



華中科技大學出版社

<http://www.hustp.com>



# NEW VISION ON HOUSE

## 別墅新視野

深圳市海閱通文化傳播有限公司 編



華中科技大學出版社

<http://www.hustp.com>

# contents

**004** / 巴拉奇海滨别墅  
PARATY HOUSE

**012** / 巴伊亚生态住宅  
BAHIA HOUSE

**022** / 巴洛别墅  
BARROW HOUSE

**030** / 黑房子  
BLACK HOUSE

**038** / C+V 房  
C+V HOUSE

**048** / 城市海滩豪宅 —— Coleman 宅邸  
COLEMAN RESIDENCE CITY BEACH

**056** / 钻石别墅  
DIAMOND HOUSE

**062** / 漂浮的房子  
FLOATING HOUSE

**074** / 圣保罗 6 号别墅  
HOUSE 6

**086** / 圣保罗 53 号别墅  
HOUSE 53

**092** / 马里索尔别墅  
HOUSE IN MARISOL

**100** / J2 别墅  
HOUSE J2

**108** / K 别墅  
HOUSE K

**114** / 博物馆式的住宅  
HOUSE LIKE A MUSEUM

**122** / 太阳湖 RM 别墅  
HOUSE RM

**130** / 克莱因瓶别墅  
KLEIN BOTTLE HOUSE

**136** / 信箱别墅  
LETTERBOX HOUSE

**142** / 狮头别墅  
LION HEAD HOUSE

**148** / 光影别墅  
MAISON DE LA LUMIERE

**156** / 米兰特德霍尔托住宅  
MIRANTE DO HORTO HOUSE

**164** / 木乃伊山高地别墅  
MUMMY MOUNTAIN RESIDENCE

**172** / 溪边悠宅  
NOYACK CREEK HOUSE

**178** / 开放式别墅  
OPENHOUSE

**186** / OUTrial 别墅  
OUTRIAL HOUSE

**192** / 教堂里的住宅  
A HOUSE IN A CHURCH

**200** / 普雷尔别墅  
PRYOR RESIDENCE

**208** / 圣巴巴拉 RZ 别墅  
RZ HOUSE

**216** / 蓝宝石住宅式画廊  
SAPPHIRE RESIDENTIAL GALLERY

**224** / 天际线上的居所  
SKYLINE HOUSE

**232** / 索斯诺斯基别墅  
SOSNOWSKI RESIDENCE

**240** / 圆顶别墅  
THE DOME HOUSE

**246** / 半山腰红杉木别墅  
THE HILLSIDE HOUSE

**254** / 兰花宅  
THE ORCHID

**264** / 卡斯卡达的瀑布别墅  
THE WATERFALL HOUSE

**274** / V 住宅  
V HOUSE

**280** / 向“下”扩建的别墅  
VILLA "UNDER" EXTENSION

**290** / BH 别墅  
VILLA BH

**296** / 方坦住宅  
VILLA FORTUIN

**302** / Storingavika 别墅  
VILLA STORINGAVIKA

**308** / 威弗利别墅  
WAVERLY HOUSE



# PARATY HOUSE

project / 项目名称 > 巴拉奇海滨别墅

architect / 设计公司 > Marcio Kogan 建筑事务所

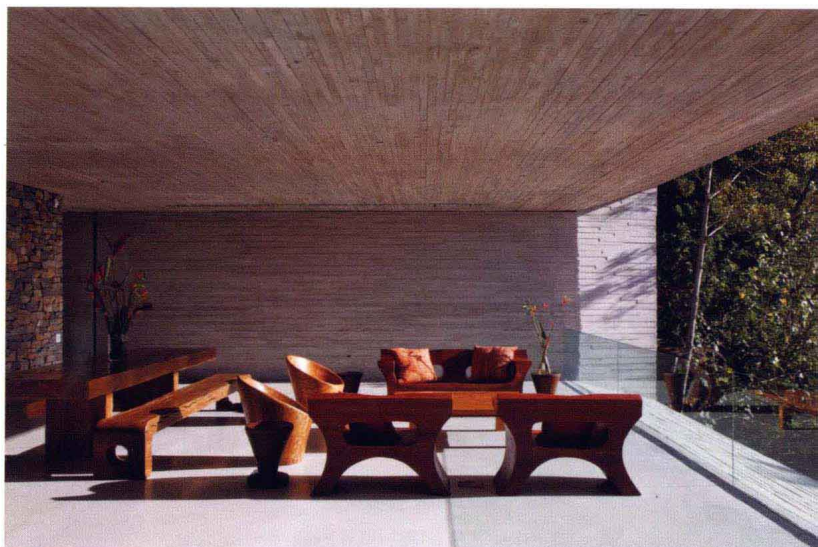
location / 项目地点 > 巴西

built area / 项目面积 > 840 m<sup>2</sup>

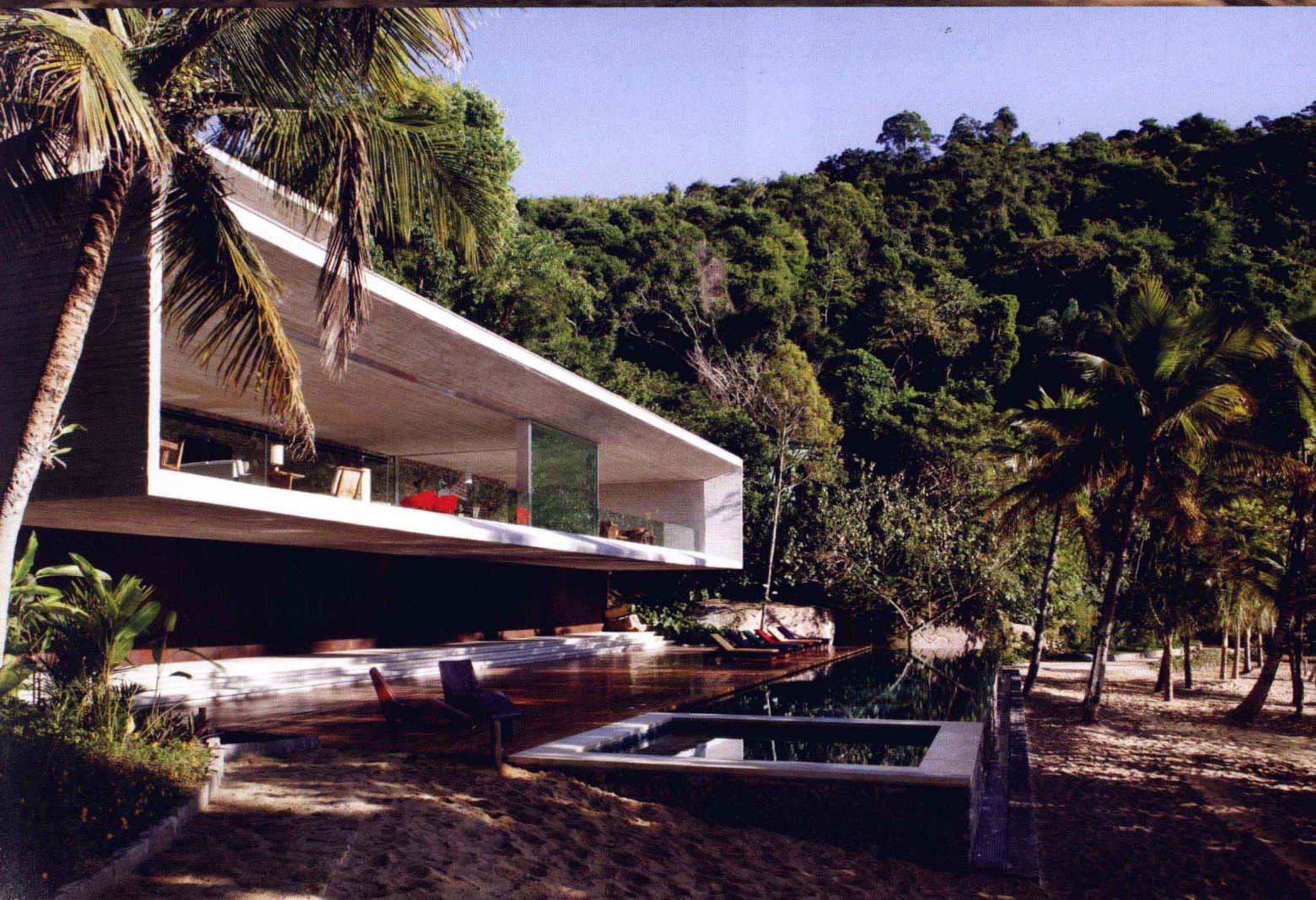
photographer / 摄影师 > Nelson Kon

Two boxes of reinforced concrete, rest fixed connected on the mountainside of one of these islands in Paraty and Angra dos Reis; two modern prisms between the large colossal stones of the Brazilian coast.

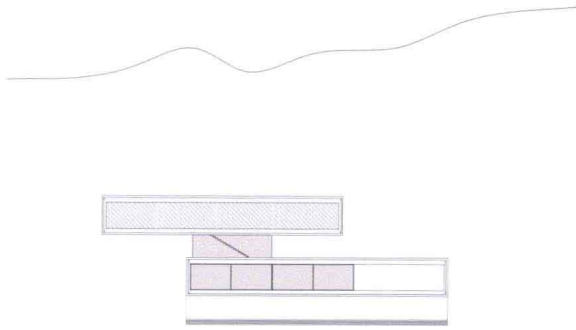
巴拉奇海滨别墅位于巴拉奇、安哥拉地区一座小岛的山坡上，它的结构像两个巨大的钢筋混凝土盒子叠加在一起，像两个位于巴西海岸的巨大石山之间的棱柱。



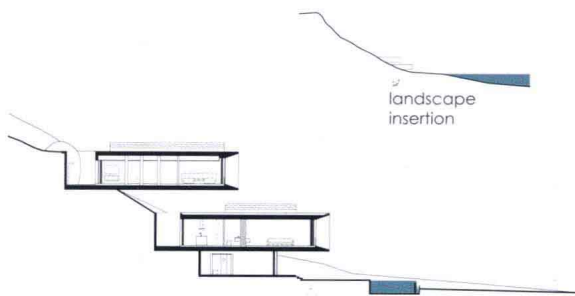








front view



section a



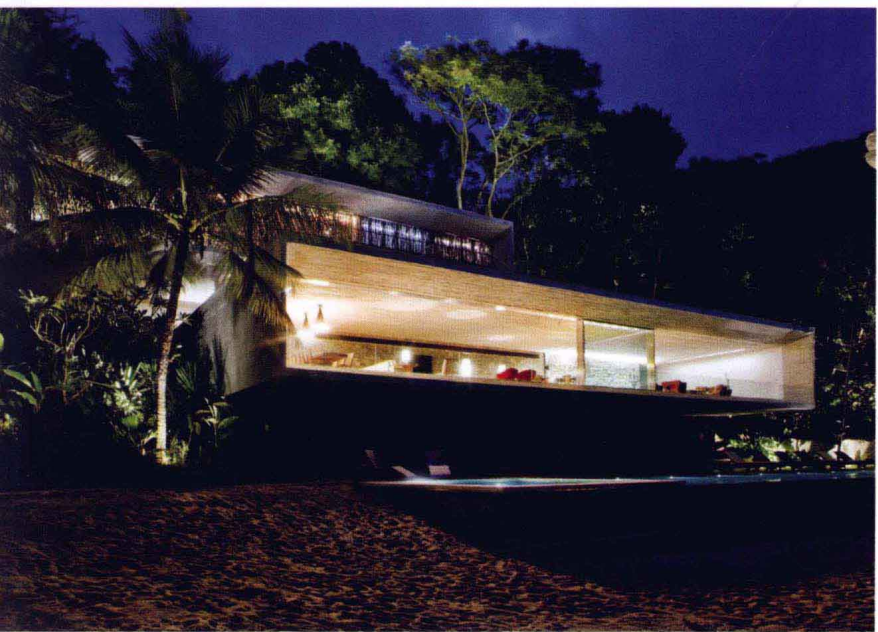
section b







The house, of structural ingenuity, finds balance in the topography of the land, constituting an extensive open doorway and living space in the practically-untouched nature where are rocks and dense rain forest. There is an important furniture collection designed by many famous designers.



这里属于岩石区和茂密的雨林区，在这本不易触及的自然环境之中，设计师根据地形创造了一个开阔的开放式生活空间。其结构精巧，内部家具别具特色，其中不乏许多名家的杰作。



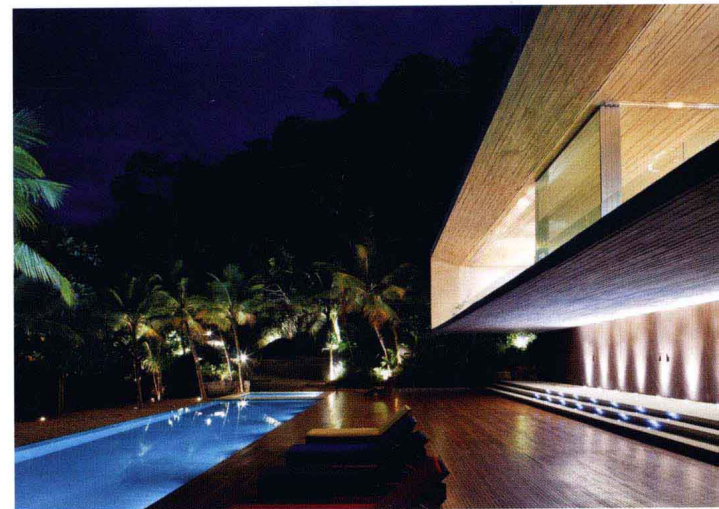
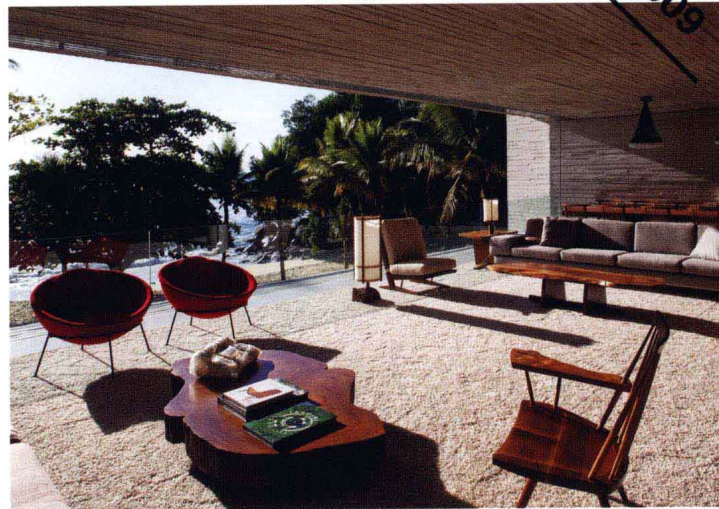




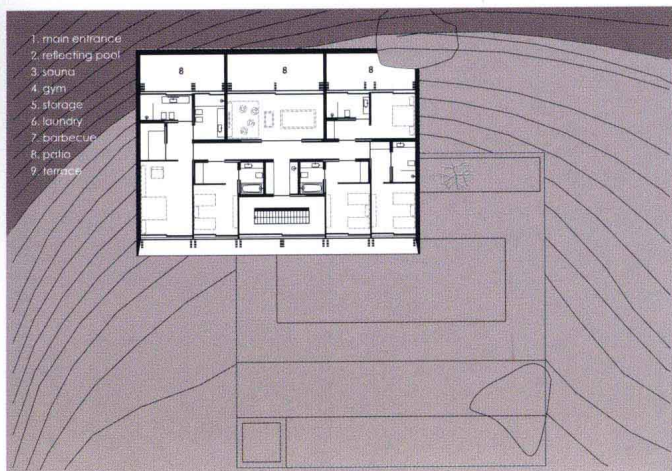


The inhabitants arrive by boat: the entrance to the house, already protected by the slab, after stepping on the sand, is via a metallic bridge positioned over a crystal-lined reflecting pool. The bridge leads to stairs connecting to the lower volume. This volume contains part of the program of the house: living room, kitchen and service area. The continual internal area has a 27-meter span and huge glass windows allow for the view, the sea. The same entrance stairs lead to the upper volume which lodges the bedrooms. In the front part of the house, retractile panels of eucalyptus sticks protect the bedrooms from the sun. The spaces that face the mountain, have small internal patios with zenital lighting and the use of exposed reinforced concrete grants a striking texture to the walls.

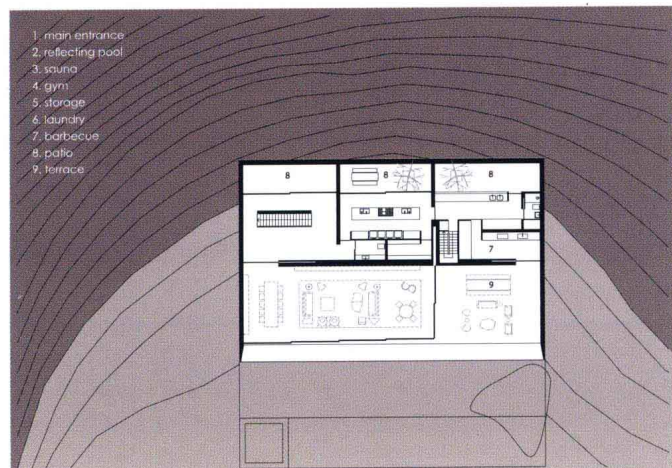
住户可以坐小船来这里。别墅的入口用石板铺成，沙滩和别墅之间有个晶莹剔透的水池，穿过水池上方的金属桥便可到达与一楼相连的楼梯旁。客厅、厨房和服务区位于一楼。这里有一个 27 米长的空间，宽大的玻璃可以让住户欣赏海景。通过楼梯可到达二楼的卧室。面向海滩的一面安装了可伸缩的桉树棍，可阻挡强烈的太阳光进入卧室。而面向山的一面有许多小型露台，顶上装有照明灯，暴露的钢筋混凝土和墙壁的纹理相互映衬。



third floor



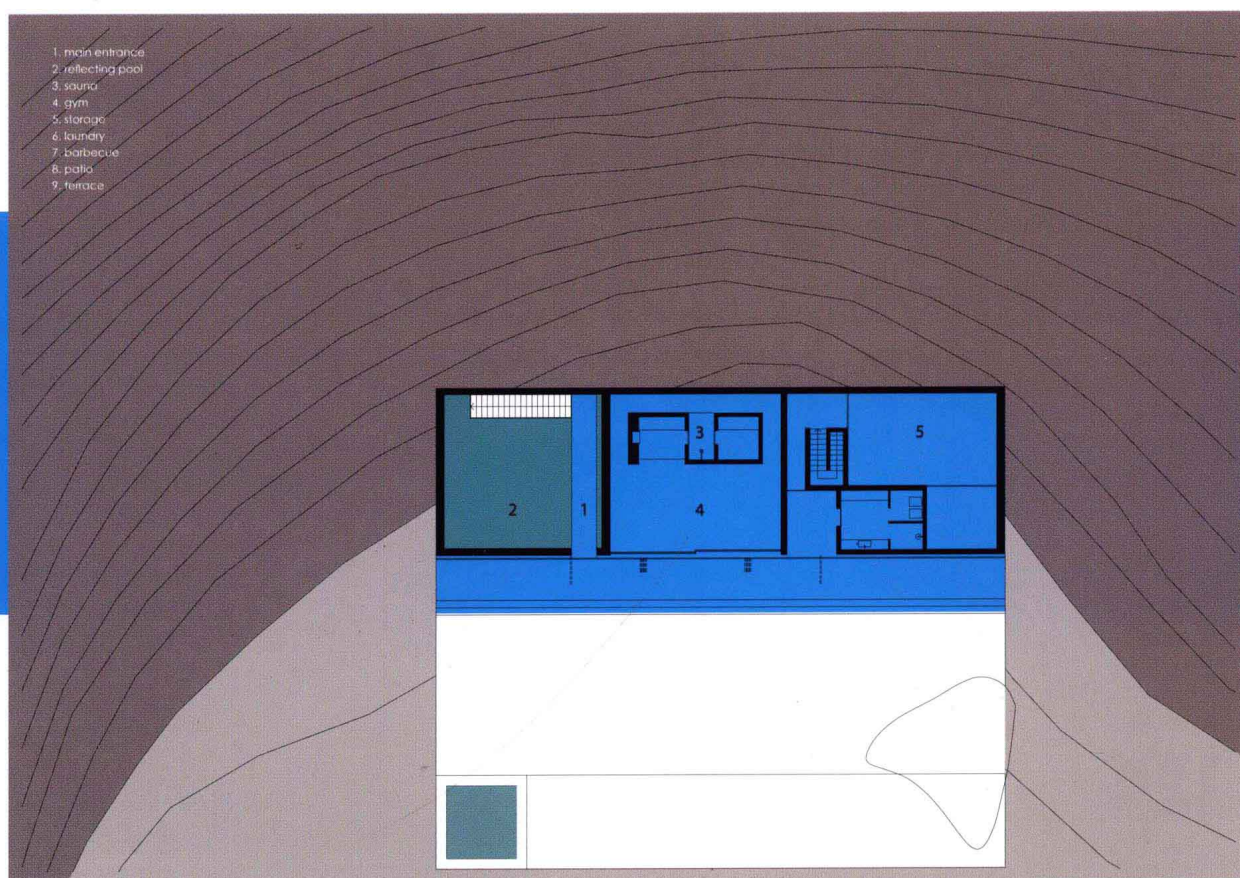
first floor







ground floor



The entire top of the house is covered with terraces, garden for the sculptures and for the medicinal plants and edible herbs.

别墅的整个顶部是屋顶平台，可作为花园放些雕塑品，同时也  
能种植一些医学植物和可食用的草药。







## BAHIA HOUSE

project / 项目名称 > 巴伊亚生态住宅

architect / 设计公司 > Marcio Kogan 设计公司

location / 项目地点 > 巴西

built area / 项目面积 > 690 m<sup>2</sup>

photographer / 摄影师 > Nelson Kon

The Bahia House is an ecological house. But, not in the technological sense, not in the contemporary sense of the word "sustainability", it does not have the very latest state-of-the-art gadgets that make it possible to optimize electric expenditure. The organization of the floor plan and the use of materials come close to those of traditional architecture.

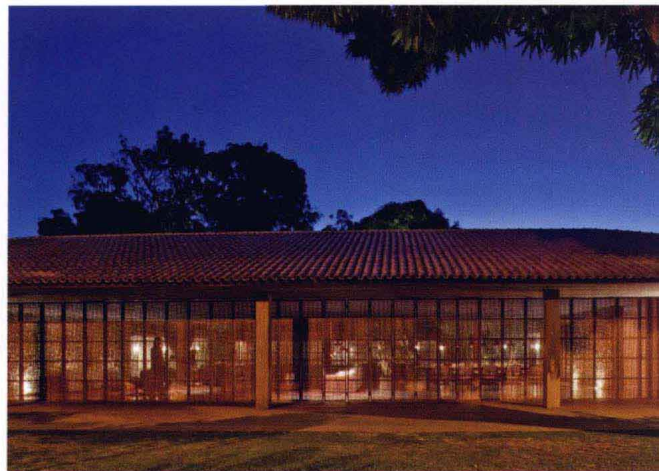
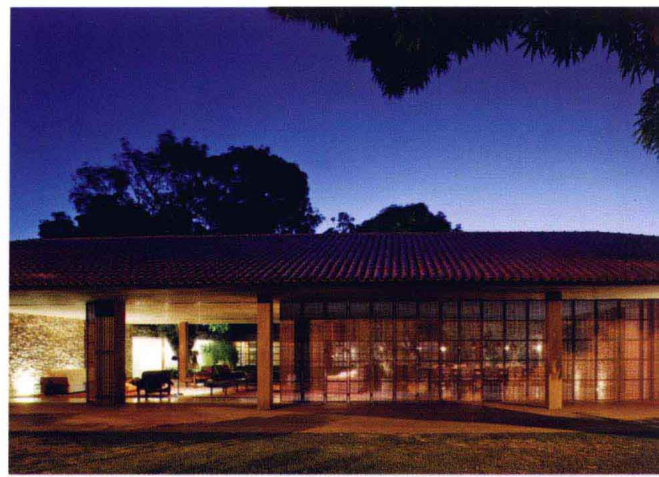
巴伊亚住宅是一栋生态建筑，但既非技术角度的定义也非“可持续”意义上的生态——它没有使用最先进的技术，因此可以节约电力消耗。其结构的组织和材料的运用使该住宅更趋向于传统建筑。



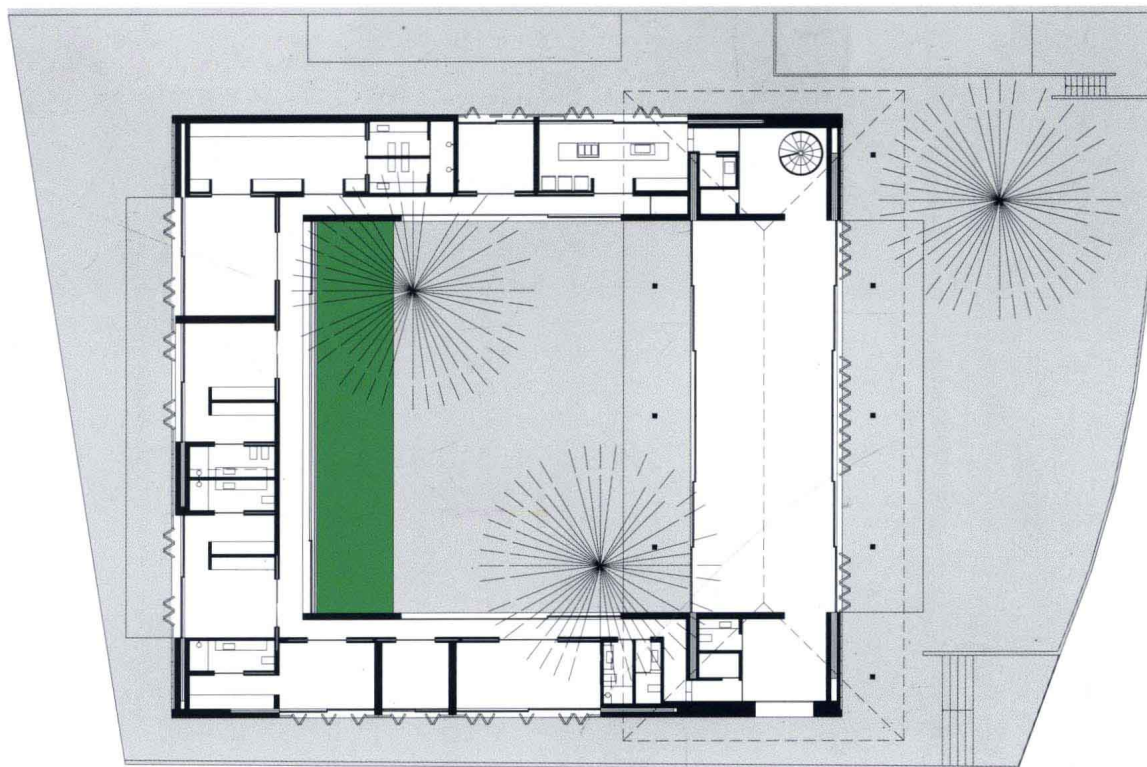












ground floor



The Bahia House makes use of the old popular knowledge that has been reinvented and incorporated throughout the history of Brazilian architecture. The house was considered for where it is, for the climate of where it is, for Bahia. And, for this no "green" software was used, no equipment and no calculations were made. The builders of bahian traditional houses have long-known how to keep interiors cool even with a blazing sun of more than 40°C.

该住宅利用巴西建筑史上不断改良的传统知识，同时考虑了巴伊亚的地形条件和气候条件，并且没有采用任何“绿色”软件，也没有制造任何设备和经过任何运算。即使室外温度超过 40 摄氏度，巴伊亚当地的房屋建造者也知道如何保持室内清凉。





These bahian houses have roofs of clay, a banal material made in a rustic manner, and wooden ceilings. The openings have large panels of wooden Mashrabiya brought to Brazil by the Portuguese colonial architecture since the first centuries of its occupation of the American territories, and its origin is of an Arabian cultural influence. These wooden panels provide vast comfort to the interior. The traditional bahian house uses the northeastern wind blowing in from the sea to organize the floor plan and has cross ventilation in its principal spaces, always making the interior cool and airy.

住宅的屋顶使用了乡村方法制作的普通粘土和木板。开口处的大块木板采用了 Mashrabiya 栅格结构，这也是葡萄牙人占领美洲大陆时引入的建筑手法，起源于阿拉伯。这一结构提高了室内的舒适度。巴伊亚传统住宅通常利用海面吹来的东北风组织空间，使主要区域产生穿堂风，整个空间清凉舒适。

此为试读，需要完整PDF请访问：[www.ertongbook.com](http://www.ertongbook.com)