

建/筑/设/计/全/方/案

OFFICE

W

# 办公建筑

韩国A&C出版社 著

Copyright © A&C Publishing Co., Ltd.  
All rights reserved.  
Chinese simplified translation copyright © 2011 Beijing  
Science and Technology Press Co., Ltd.

著作权合同登记号 图字: 01-2010-0445

## 图书在版编目(CIP)数据

W系列. 5, 办公建筑: 英文/韩国A&C出版社著. —北京:

北京科学技术出版社, 2011. 6

(韩国最新建筑&室内细部丛书.)

ISBN 978-7-5304-5045-1

I. ①韩… II. ①韩… III. ①办公室—建筑设计—英文

IV. ①TU2

中国版本图书馆CIP数据核字(2011)第031720号

## 办公建筑

---

作 者: 韩国A&C出版社

策 划: 李 媛

责任编辑: 李 媛 王 晖

责任印制: 杨 亮

封面设计: 青鸟意讯艺术设计

图文制作: 青鸟意讯艺术设计

出 版 人: 张敬德

出版发行: 北京科学技术出版社

社 址: 北京西直门南大街16号

邮政编码: 100035

电话传真: 0086-10-66161951 (总编室)

0086-10-66113227 (发行部) 0086-10-66161952 (发行部传真)

电子信箱: [bjkjpress@163.com](mailto:bjkjpress@163.com)

网 址: [www.bkjpress.com](http://www.bkjpress.com)

经 销: 新华书店

印 刷: 北京捷迅佳彩印刷有限公司

开 本: 920mm × 1260mm 1 / 32

字 数: 100千字

印 张: 8.5

版 次: 2011年6月第1版

印 次: 2011年6月第1次印刷

ISBN 978-7-5304-5045-1/T · 639

定价: 85.00元



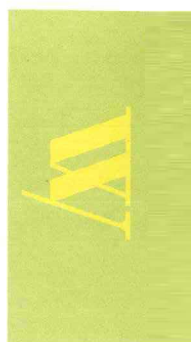
京科版图书, 版权所有, 侵权必究。  
京科版图书, 印装差错, 负责退换。

建/筑/设/计/全/方/案

# 办公建筑

OFFICE

韩国A&C出版社 著



北京科学技术出版社



# \*OFFICE









>>CONTENTS

# 办公建筑

## KNHC GWANGJU JEONNAM

### 分公司办公室

TOMOON Engineering & Architects Universe-  
Top Engineering & Architects  
UNSANGDOONG建筑公司\_006

## KNHC DAEGU GYEONGBUK 分公司办公室

WONYANG Architectural Design Group\_020

## 文化资源中心

WONYANG Architectural Design Group\_036

## WOONGJIN THINKBIG

Kim in-cheurl ARCHIUM Architect\_050

## DMC办公楼 (TRUETEC)

Barkow Leibinger Architects  
CHANGLO Architects\_072

## 数字奇异空间

HEERIM Architects & Planners\_084

## KORLOY HOLYSTAR 大楼

MANO建筑公司\_098

## B2Y办公室

Y SPACE\_110

## JEOLLANAM-DO 政府办公室

G.S.建筑公司 Kim Hyunchul\_120

## SEOUL 邮政中心 办公室 (SCPO)

SPACEGROUP HEERIM Architects & Planners  
HANGIL Architects & Engineers  
DeStefano Keating Partners有限公司\_134

## MERITZ 火灾海上 保险公司大楼

SHINHAN Architects & Engineers KEATING/  
KHANG LLP\_146

## **TAEYOUNG YEOUIDO**

### **大楼**

WONDOSHI建筑集团有限公司\_154

## **大韩民国驻华使馆**

KUNWON Architects Planners Engineers\_164

## **ENVISION**

Design Pure\_170

## **BLOOMING**

### **休息大厅**

VOID planning\_180

## **MAC政府大厦**

BAUM建筑工程咨询公司 ARTECH Architects

Kim Hong-il\_188

HEERIM Architects & Planners\_194

SPACE GROUP\_200

## **多功能市政厅**

HEERIM Architects & Planners

Kim Jung-gon\_204 KIAHAN Architecture\_210

KUN-WON Architects Planners Engineers\_216

## **CHUNGCHEONG**

### **-NAM-DO**

### **议会和办公室**

AUM & LEE建筑公司\_222

## **海洋生物资源国立学院**

HEERIM Architects & Planners DOSHIN

Architecture\_228

## **GIMPO-YANGCHON**

### **生态中心**

YEZU建筑规划公司\_236

Idea Image建筑学院\_242

NODE建筑规划公司 Lee Han-gi\_249

## **CHEONAN**

### **主题公园建筑群**

HAEAHN Architects & Planners

USUN Engineering DAMOOL Architects\_254

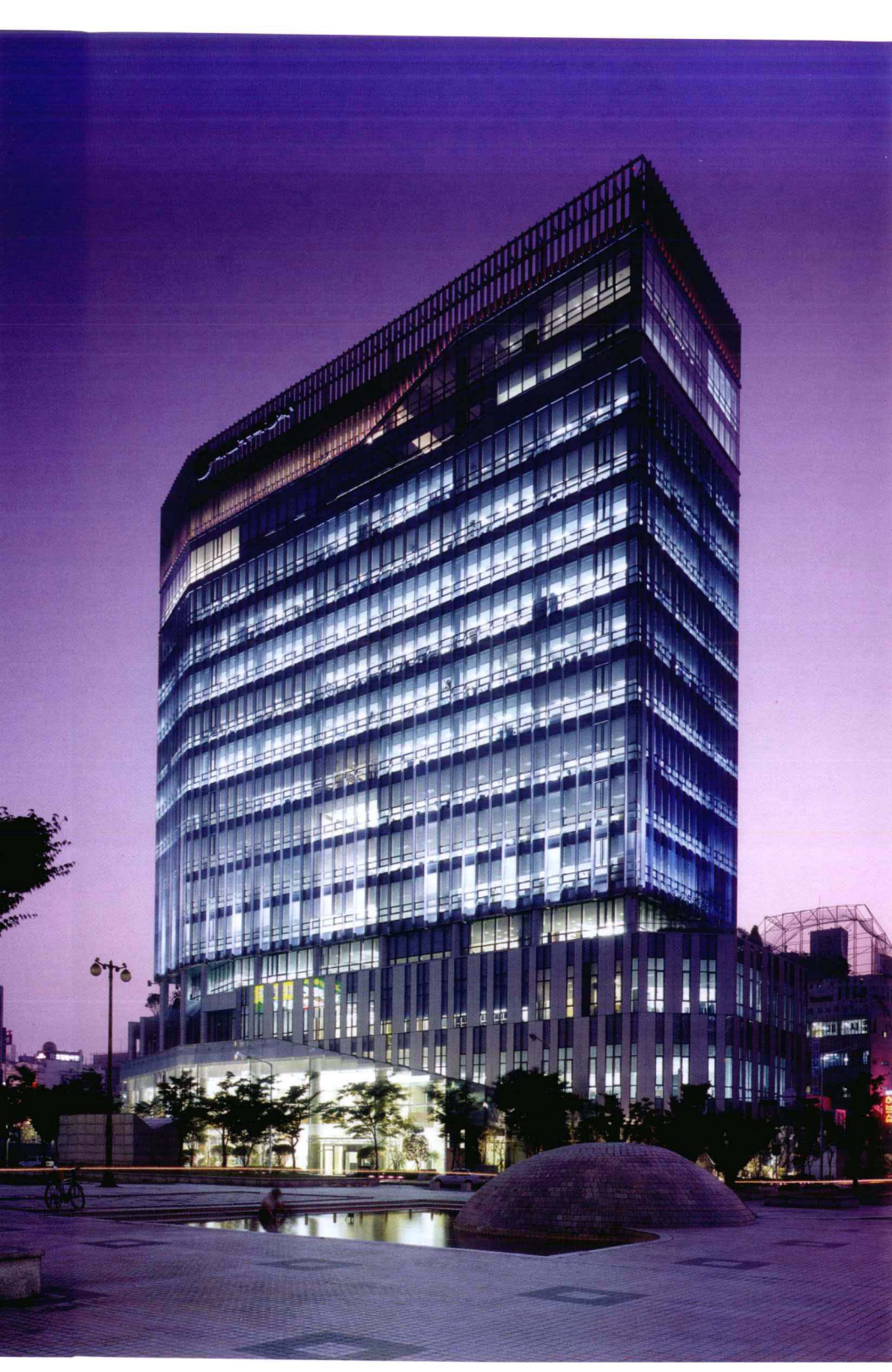
AUM & LEE 建筑公司 TOWOO

Architects & Engineers\_261

DOSHIN Architecture DONGWOO Architects &

Consultants DS GROUP Architecture\_266





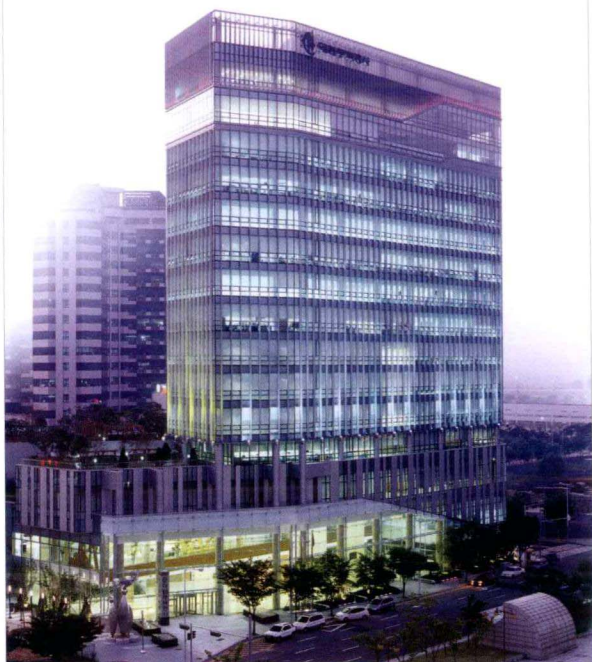


>> OFFICE

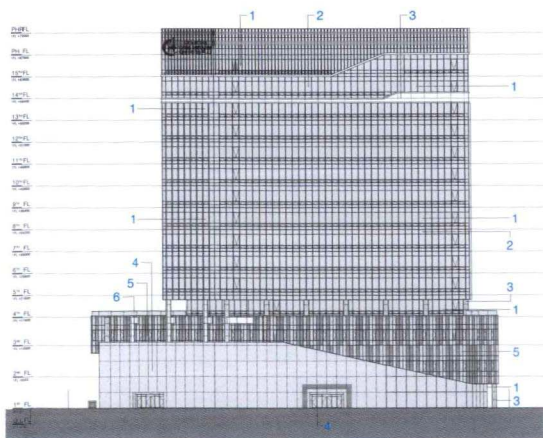
# GWANGJU JEONNAM BRANCH OFFICE OF KNHC

Location Chipyeong-dong, Seo-gu, Gwangju, Korea Site Attribute Central Commerce, Fire-Prevention, District Unit Plan Site Area 4,419.10m<sup>2</sup> Building Area 2,859.26m<sup>2</sup> Total Floor Area 29,701.55m<sup>2</sup> Building Coverage Ratio 64.70% Floor Area Ratio 429.41% Building Scope B3~15F Structure RC, Steel Exterior Finish T24 Pair Glass, PFW, Aluminium Sheet, Granite, Exposed Concrete Architecture Design Choi Ki-chul, Han Nam-soo | TOMOON Engineering & Architects + Oh Kum-yeol | Universe-Top Engineering & Architects + Jang Yoon-gyoo | UNSANGDOONG Architects Cooperation Design Team Hong Chang-sung, Lee Seon-jeong, Choi Sang-ik, Jo Dong-ho, Choi Yun-sang Client Korea National Housing Corporation Photograph TOMOON Engineering & Architects

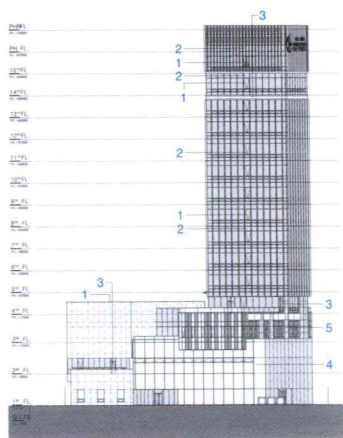
The office of the Korea National Housing Corporation in Gwangju Jeonnam was expected to play a symbolic role as a connector of the local society for housing complexes, commercial facilities, parks, public facilities and so on. The focus of the plan was expanded to a plan containing openness to the citizens, environment-friendliness, differentiated elevation and active eco-energy system with this symbolism. Light Band expressed the image of the office in Gwangju, which is called as light county, and scenic light emphasized the function of light that was involved in the construction program. The office built in a unique way with its own style has an easy access from tourism spots and the 20m-width road in front of it to be a landmark in that business area. The lower part including a square and an exhibition all was planned to be a space for the local society and external and internal squares were directly connected to each other to support the structure. The representative factor for the connected external and internal squares is two-storied open space that was processed with glass curtain wall through PFW construction method and water space and green landscape flows naturally through the inside and outside of the building. The elevation for business area was planned by using a vertical louver so that radiant heat control is possible for each season, and for the general building plan including natural ventilation, lighting, the top floor garden, the concept of Eco-Energy was introduced aiming to offer an business area with high efficiency. About the internal path of flow, a space to look down was planned and also a sky park in connection with a park and a broad outlook created an open atmosphere. Gwangju Jeonnam branch office of Korea National Housing Corporation, designed based on this symbolism, will give urbane infra structures and events and play a role as a connector with the local society.



- 1 T24 COLOR LOW-E PAIRED GLASS(ONE-SIDE HALF TEMPERED)
- 2 T24 COLOR LOW-E PAIRED GLASS(DOUBLE-SIDES HALF TEMPERED)
- 3 T3 ALUMINUM SHEET
- 4 T12 CLEAR TEMPERED GLASS (P.F.W SYSTEM)
- 5 T24 COLOR LOW-E PAIRED GLASS (ONE-SIDE AND DOUBLE-SIDES HALF TEMPERED)
- 6 T12 TEMPERED GLASS

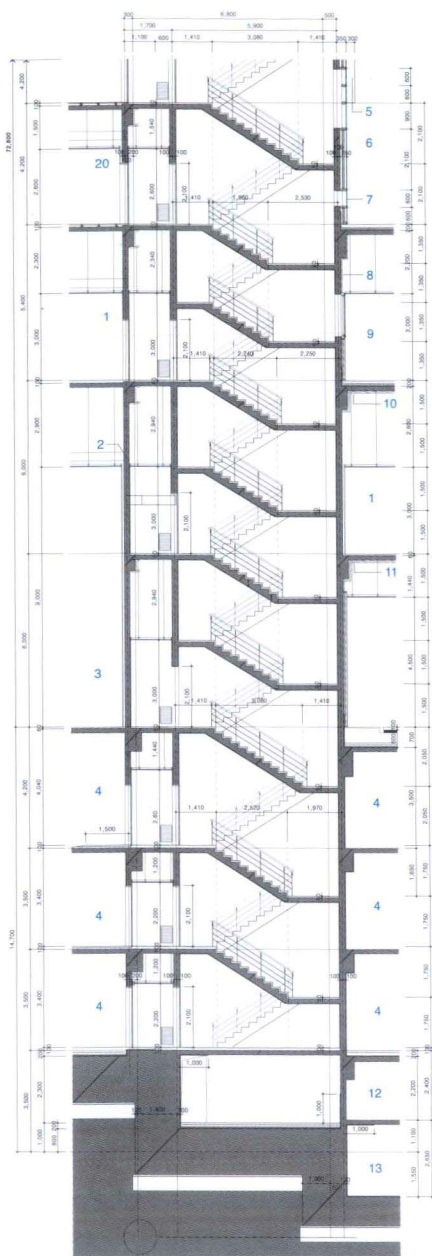


FRONT ELEVATION



LEFT ELEVATION

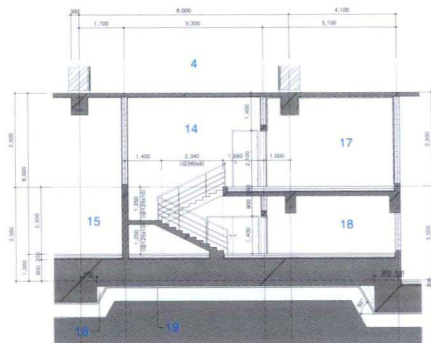




STAIR CROSS SECTION (LOW-RISE)



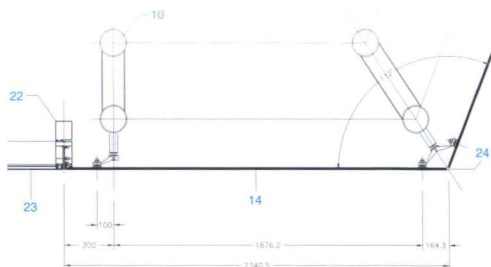
- 1 CORRIDOR
- 2 S.T. RETAINING WALL OPEN (300X500)
- 3 PUBLIC INFORMATION EXHIBITION HALL
- 4 UNDERGROUND PARKING LOT
- 5 ALUMINUM CAP
- 6 ROOF GARDEN
- 7 T24 COLOR LOW-E PAIRED GLASS (ONE-SIDE HALF TEMPERED)
- 8 T60 GLASSWOOL
- 9 OUTDOOR DECK
- 10 T105 HEAT INSULATION
- 11 LIGHT GAUGE STEEL CEILING RIB / ALUMINUM CEILING PANEL
- 12 HEAVY-WATER EQUIPMENTS MANAGEMENT (PIT)
- 13 HEAVY-WATER TREATMENT FACILITY
- 14 STAIRWAY ROOM
- 15 ELECTRONIC ROOM
- 16 LEVELING CON'C INFILLING
- 17 FAN ROOM
- 18 FIRE EXTINGUISHING GAS ROOM
- 19 T50 LEVELING CON'C / T.O.03 P.E. FILM 2FOLDS / CIDDLE STONE COMPACTION (CIVIL ENGINEERING WORK)
- 20 GLASS SETTING BLOCK (QUARTER LOCATION)



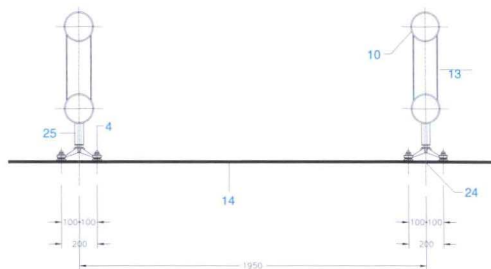
B3 STAIR ROOM SECTION



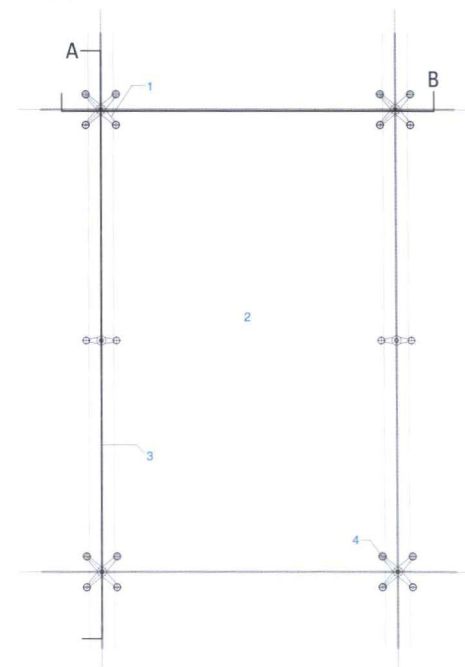
Night view of the lower exterior



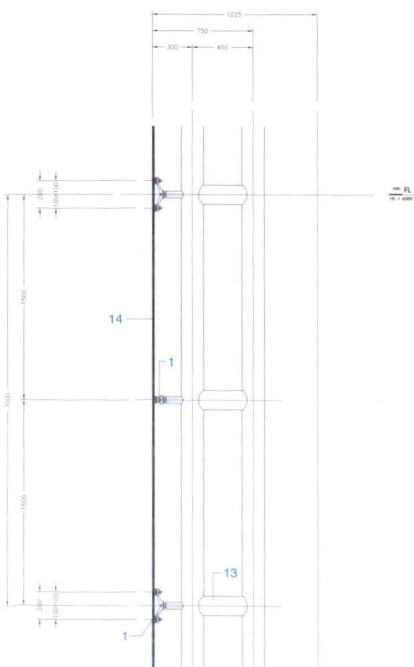
## STL STRUCTURE MODULE



## SECTION B



GLASS CURTAIN WALL PLAN

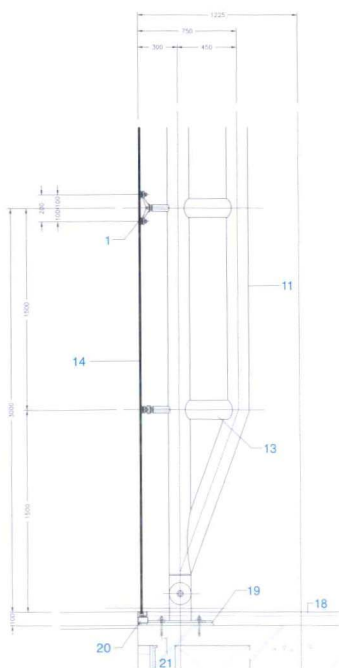


## SECTION A

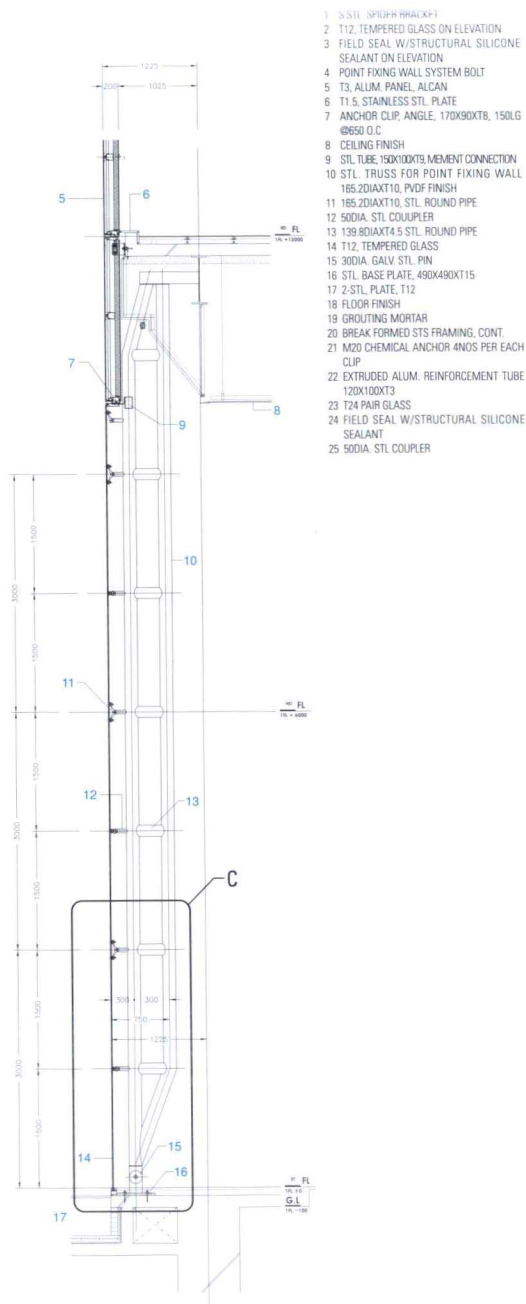




Night view of the upper exterior

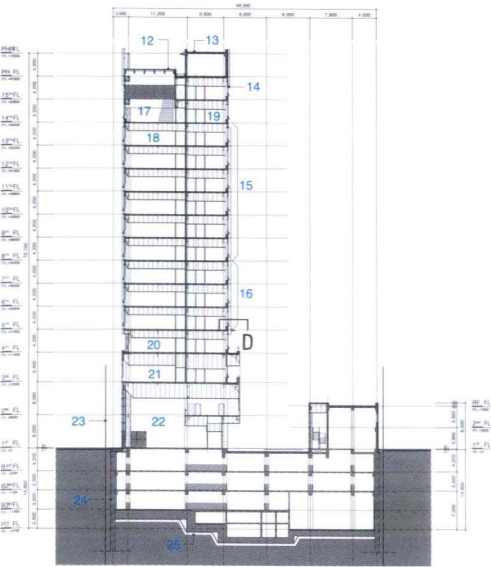


### DETAIL C

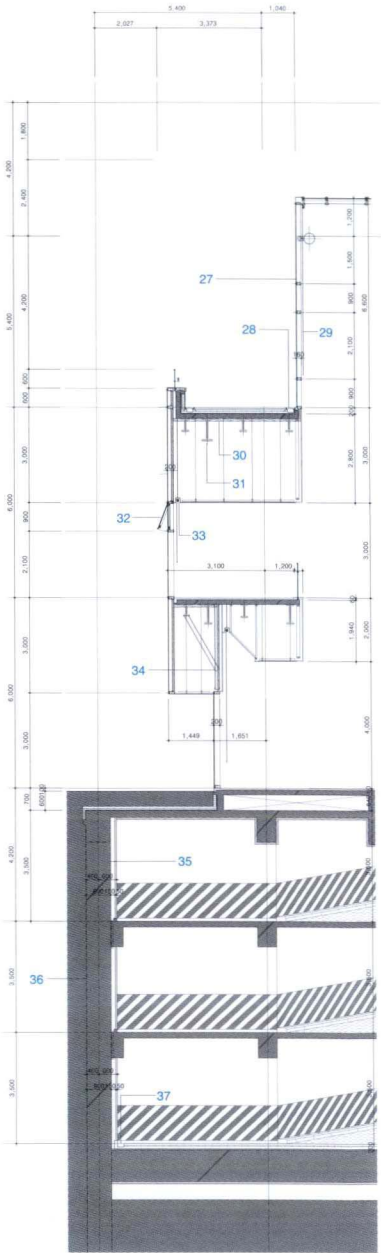


CURTAIN WALL PARTIAL SECTION

- 3 STL. TEMPERED GLASS (X3F1)
- 2 T12, T12P000 GLASS ON ELEVATION
- 3 FIELD SEAL W/STRUCTURAL SILICONE SEALANT ON ELEVATION
- 4 POINT FIXING WALL SYSTEM BOLT
- 13 ALUM. PANEL, ALCAN
- 6 T15, STAINLESS STL. PLATE
- 2 ANCHOR CLIP, ANGLE, 170X90X78, 150LG @B650 C.03
- 8 CEILING FINISH
- 9 STL. TUBE, 150X100X78, MEMMENT CONNECTION
- 1 STL. TRUSS FOR POINT FIXING WALL 165.2DIAX100, PVDF FINISH
- 11 165.2DIAX100, STL. ROUND PIPE
- 12 50DIA. STL. COUPLER
- 13 139.8DIAX100, STL. ROUND PIPE
- 14 T12, TEMPERED GLASS
- 15 100A, GALV. STL. FIN.
- 16 STL. BASE PLATE, 490X490X15
- 17 2- STL. PLATE, T12
- 18 FLOOR FINISH
- 19 GROUTING MORTAR
- 20 BREAK FORMED STS FRAMING, CONT.
- 21 M20 CHEMICAL ANCHOR 4NOS PER EACH CLIP
- 22 EXTRUDED ALUM. REINFORCEMENT TUBE 120X100X78
- 23 124 PAIR GLASS
- 24 FIELD SEAL W/STRUCTURAL SILICONE SEALANT
- 25 50DIA. STL. COUPLER



CROSS SECTION

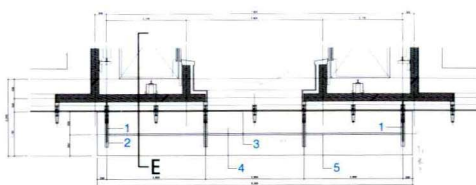


OUTER WALL CROSS SECTION (LOW-RISE)

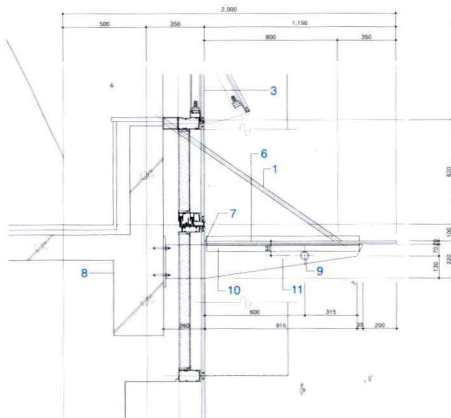


- 1 T27 ZXT3 SST PIPE
- 2 SST ZL - 40X40X5
- 3 T24 COLOR LOW-E PAIRED GLASS
- 4 T12.3 TEMPERED LAMINATED GLASS
- 5 T48.6XT2.5 SST PIPE
- 6 T12.3 TEMPERED LAMINATED GLASS
- 7 WATERPROOFING CAULKING
- 8 INS. PL - 1/W 4-M20 CHEMICAL
- 9 T48.6XT2.5 SST PIPE
- 10 SST ZL - 40X40X5
- 11 SST PL - T12
- 12 T24.76 COLOR LOW-E PAIRED GLASS
- 13 T126 PLAIN CON'C, MECHANICAL PLASTERING (#8-150X150 WIREMESH) / T21 PROTECTIVE MORTAR / T3 MEMBRANE WATERPROOFING / STRUCTURAL SLAB, STEEL TROWEL FIN
- 14 ALUMINUM GRILL
- 15 RENTAL OFFICE ZONE
- 16 OFFICE ZONE
- 17 INTERIOR GARDEN
- 18 RENTAL OFFICE
- 19 TOILET
- 20 MIDDLE CONFERENCE ROOM
- 21 GRAND CONFERENCE ROOM
- 22 HALL
- 23 SITE BOUNDARY LINE
- 24 SLURRY WALL/COLL. ENGINEERING WORK)

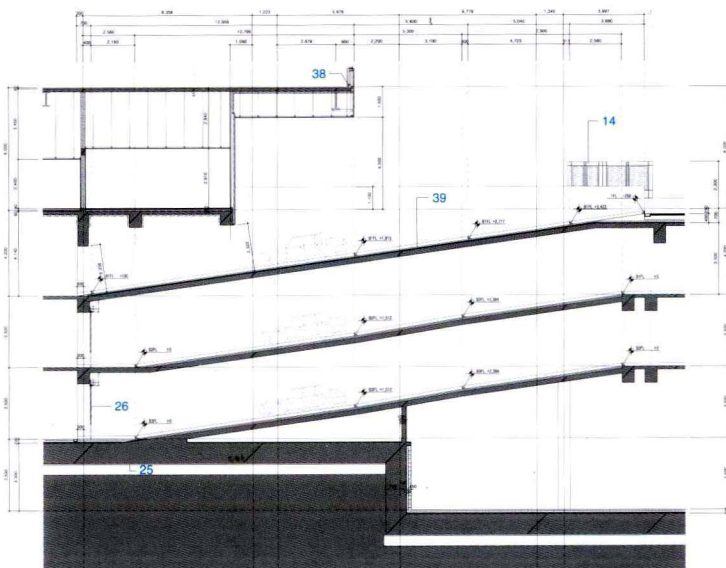
- 25 T50 LEVELING CON'C / T0.03 PE FILM 2FOLDS / CIDDLE STONE COMPACTION (CIVIL ENGINEERING WORK)
- 26 STEEL FIREPROOFING SHUTTER INSTALL (ELECTRONICALLY POWERED)
- 27 T24 COLOR LOW-E PAIRED GLASS (ONE-SIDE HALF TEMPERING)
- 28 GRANITE TRENCH COVER INSTALL (WV=300)
- 29 ROLL SCREEN (EXTRA WORK)
- 30 T105 HEAT INSULATION
- 31 FIREPROOF COVERING (TYP)
- 32 ELECTRONICALLY-POWERED WINDOW
- 33 STEEL CURTAIN BOX
- 34 C - 150X50X20X3.2@900
- 35 WATER-BASED PAINT / T50 ASBESTOS-FREE LIGHT-GAUGE COMPOSITE PANEL / T150 SPACE
- 36 CIVIL ENGINEERING RETAINING WALL
- 37 OPEN TRENCH INSTALL(W=200)
- 38 T25 FIRE STOP FOAM, T1.6 STEEL PLATE (FOR BETWEEN-FLOORS FIREPROOFING SECTION)
- 39 T76 PLAN CON'C, COTTON-GINNING TREATMENT(#8 - 150X150 WIREMESH) / T21 PROTECTIVE MORTAR / T3 MEMBRANE WATERPROOFING / STRUCTURAL SLAB, STEEL TROWEL FIN



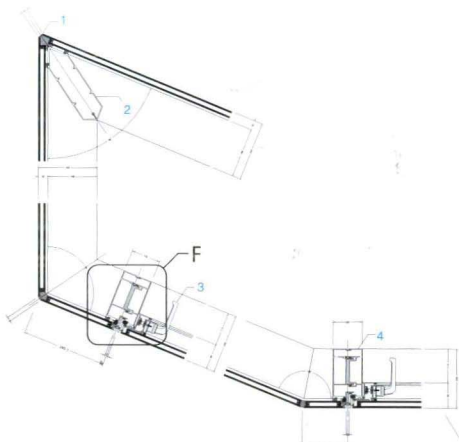
4F CANOPY SECTION D



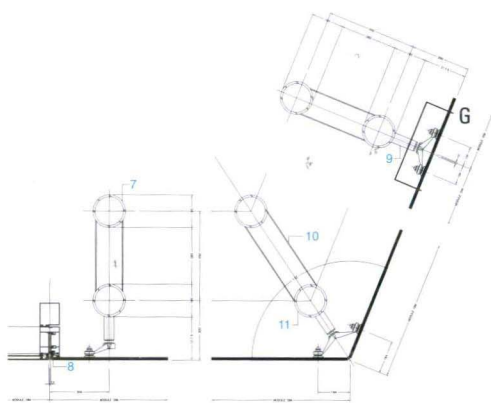
CANOPY SECTION E



RAMP CROSS SECTION

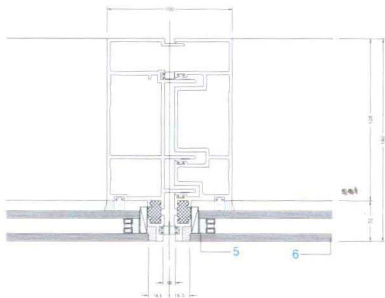


CORNER MULLION SECTION

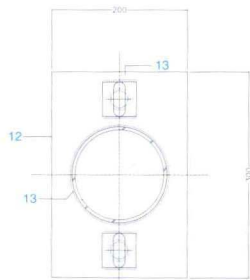


GLASS HORIZONTAL SECTION

- 1 FIELD SEAL W/STRUCTURAL SILICONE SEALANT
- 2 EXTRUDED CORNER MULLION
- 3 THREE POINT MULTI LOCK HANDLE
- 4 STRUCTURE MULLION
- 5 GLASS SETTING BLOCK/QUARTER LOCATION
- 6 T24 PAIR GLASS
- 7 165.2 DIA X 110 STL. ROUND PIPE
- 8 FIELD SEAL W/SILICONE SEALANT
- 9 50 DIA. STL. COUPLER
- 10 139.8 DIA X 4.5 STL. ROUND PIPE
- 11 POINT FIXING WALL SYSTEM BOLT
- 12 PRIMARY STL. ANCHOR CLIP, CHANNEL 200X20X18, 300LG
- 13 FIELD WELD AFTER FINAL ALIGNMENT



DETAIL F



SECTION G



The lobby on the 1st floor