



show Flat Trend

样板风尚

深圳市创扬文化传播有限公司 策划 徐宾宾 主编

江苏人民出版社

图书在版编目 (CIP) 数据

样板风尚 / 徐宾宾 主编. —南京:
江苏人民出版社, 2011. 11

ISBN 978-7-214-07639-7

I. ①样… II. ①徐… III. ①住宅—室内装修—建筑设计—图集 IV. ①TU767-64

中国版本图书馆CIP数据核字(2011)第233912号

样板风尚

徐宾宾 主编

责任编辑 艾璐 刘焱
责任监印 彭李君
出版 江苏人民出版社(南京湖南路1号A楼 邮编: 210009)
发行 天津凤凰空间文化传媒有限公司
销售电话 022-87893668
网址 <http://www.ifengspace.cn>
集团地址 凤凰出版传媒集团(南京湖南路1号A楼 邮编: 210009)
经销 全国新华书店
印刷 深圳当纳利印刷有限公司
开本 965毫米×1270毫米 1/16
印张 23
字数 221千字
版次 2012年1月第1版
印次 2012年1月第1次印刷
书号 ISBN 978-7-214-07639-7
定价 328.00元(USD 58.00)

(本书若有印装质量问题, 请向发行公司调换)



show Flat
Trend
样板风尚

深圳市创扬文化传播有限公司 策划 徐宾宾 主编

江苏人民出版社



004	南京雅皮士 Nanjing Yuppie	104	富通天邑湾样板房1 Futong Tianyi Bay Show Flat 1
014	保利东湾样板间1 Poly East Bay Show Flat 1	110	富通天邑湾样板房2 Futong Tianyi Bay Show Flat 2
020	保利东湾样板间2 Poly East Bay Show Flat 2	114	富通天邑湾样板房3 Futong Tianyi Bay Show Flat 3
026	黑白现代 Black and White Modern Style	118	白色记忆 White Memory
032	蓝色地中海 The Blue Mediterranean	122	兆阳御花园样板房 Zhaoyang Royal Garden Show Flat
038	中西合璧 Oriental Simple	126	水月镜荷·波光舞色 The Water House
042	建筑师的家 Architect's Home	134	美好时光 Good Times
046	公园道一号1 No.1 Park Road 1	140	复合新表情 The New Penthouse
052	公园道一号2 No.1 Park Road 2	144	熙湾华府 Xiwan Hua Mansion
056	国骅柏园样板房 Guohua Baiyuan Show Flat	150	万科第五园 Vanke the Fifth Garden
066	新乡村 New Country	156	观山水之邸 Landscape Residence
074	新都市探戈 New Urban Tango	162	中汇广场样板房B户型 Zhonghui Square Show Flat Type B
080	古韵飘香 The Ancient Charm	166	中汇广场样板房A户型 Zhonghui Square Show Flat Type A
084	金地长青湾E户型 Gemdale Laurel Bay Type E	170	中裕豪庭别墅E户型 Zhongyu Haoting Villa Type E
088	金地长青湾F户型 Gemdale Laurel Bay Type F	176	仁恒怡庭江湾城样板房 Renheng Yiting Jiangwan Town Show Flat
096	昆明顺城 Shuncheng in Kunming	180	上田小区 Shangtian District

184	低调的奢华 Modest Luxury	284	海润尊品样板房 Hairun Classic Show Flat
190	暖冬 Warm Winter	288	锦园样板房 Jinyuan Show Flat
196	牧场皮尔斯 Meadows@Peirce	292	珠光新城样板房1 Pearl City Show Flat 1
202	天光云影间 Between Light and Clouds	296	珠光新城样板房2 Pearl City Show Flat 2
206	柏树街住宅 Cedar Street Residence	300	珠光新城样板房3 Pearl City Show Flat 3
212	巴西圣保罗复式公寓 RR House	304	园方欧洲城样板房1 Yuanfang European City Show Flat 1
218	金叶岛5栋305 Golden Leaf Island 5-305	312	园方欧洲城样板房2 Yuanfang European City Show Flat 2
224	金叶岛6栋411 Golden Leaf Island 6-411	316	竹韵山色 Bamboo and Mountain Garden
230	恒茂国际都会 Hengmao International Metropolis	322	万泰春天 Wantai Spring
236	中山一品 Zhongshan Yipin	328	港宏世家二期样板房 Show Flat at Ganghong New Luxury
244	金光闪闪的杜拜贵气家 Home With Glittering Extravagance of Dubai	334	汇创名居 Huichuang Glorious House
252	精品博物馆 Home Decorating Just as Delicate Museum	340	柏嘉半岛1103 Room 1103 of Baijia Peninsula
260	天使粉丝的精品时尚住宅 Boutique Residence for Angels	346	柏嘉半岛1101 Room 1101 of Baijia Peninsula
266	春江花城 Chunjiang Flower City	352	新江湾三号样板房 New Jiangwan Show Flat No. 3
270	蓝色海岸 Blue Coast	356	南京意恒居 Nanjing Yiheng Residence
278	长青藤之秋样板房 Show Flat of Autumn Ivy	360	天骏蓝水湾 Tianjun Blue Bay

南京雅皮士

Nanjing Yuppie



设计师：王赟、王小峰
设计单位：广州尚逸装饰设计有限公司
建筑面积：132平方米

This case pays high attention to the details which bring fashionable and nostalgic atmosphere to future residents.

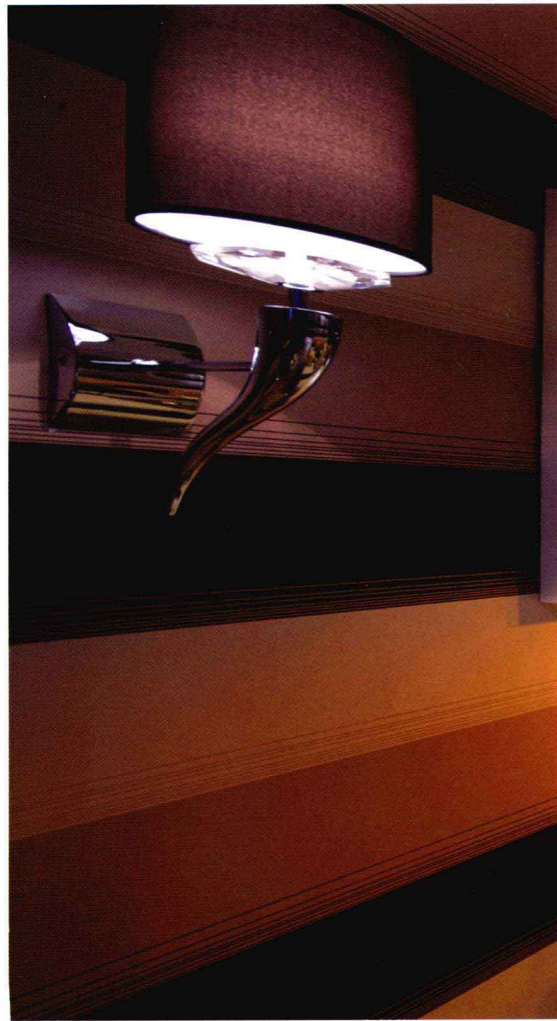
In order to show the fashionable elements of yuppie era, the designer promotes the spatial layers and rhythm by adopting delicate details in the layout of the space, which can be reflected in every aspect. The old days' fashionable elements are integrated into modern space in a perfect way. People inside can feel a sense of nostalgia for the 1980s, and also the sense of fashion.

The over complicated design should be avoided when designing. Active colors tune the space; Simple furniture and well colored cloth and ornaments highlight the space.

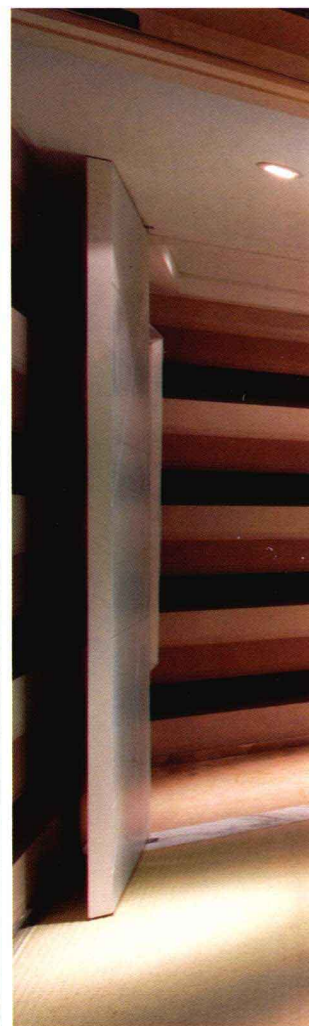
The match of furniture and ornaments dots the space, comfort and casual. The white and black decoration is put in living room, dining room, and even in bedroom, which adds fashionable and lively atmosphere to the simple and nostalgic home.

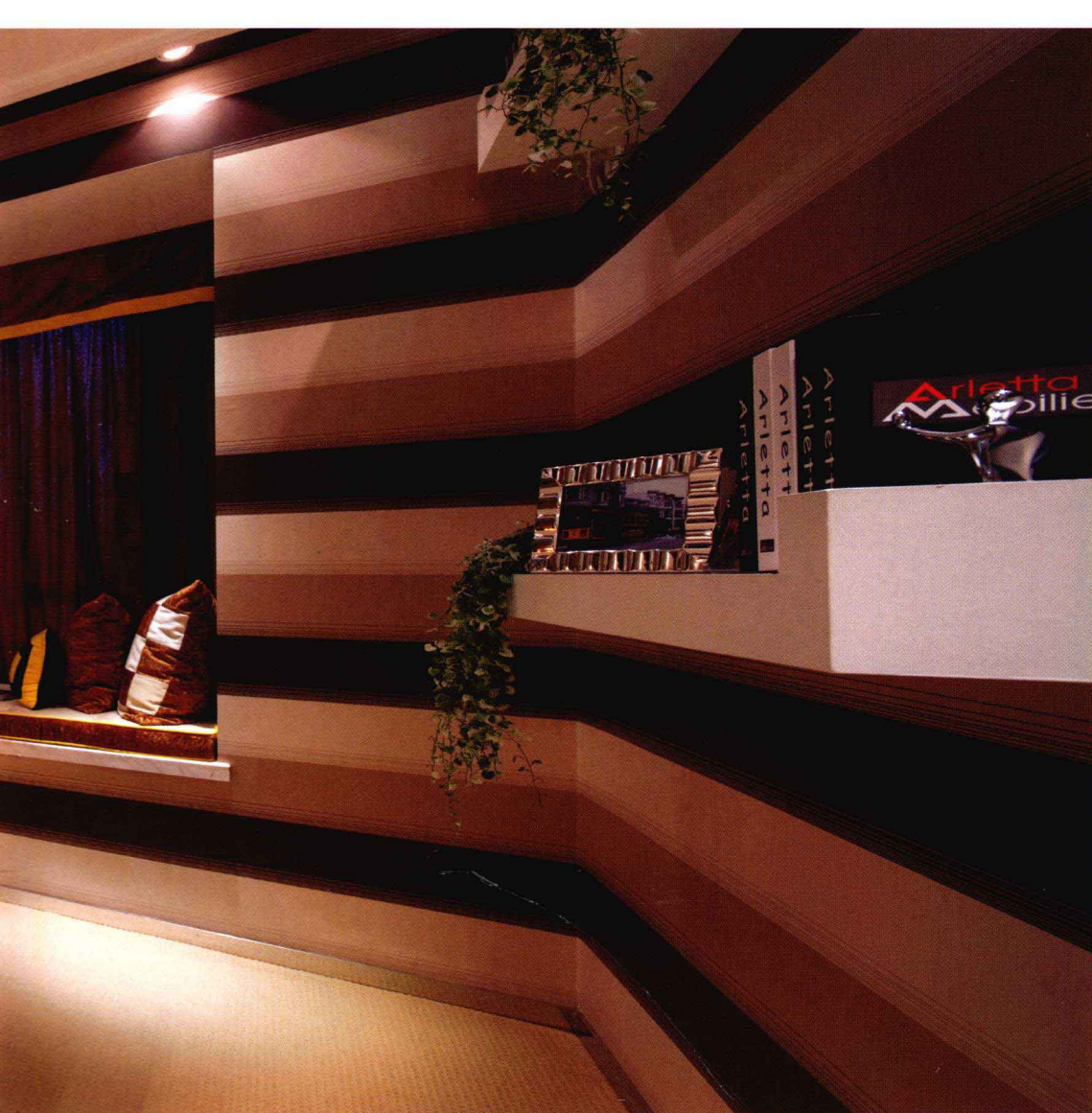


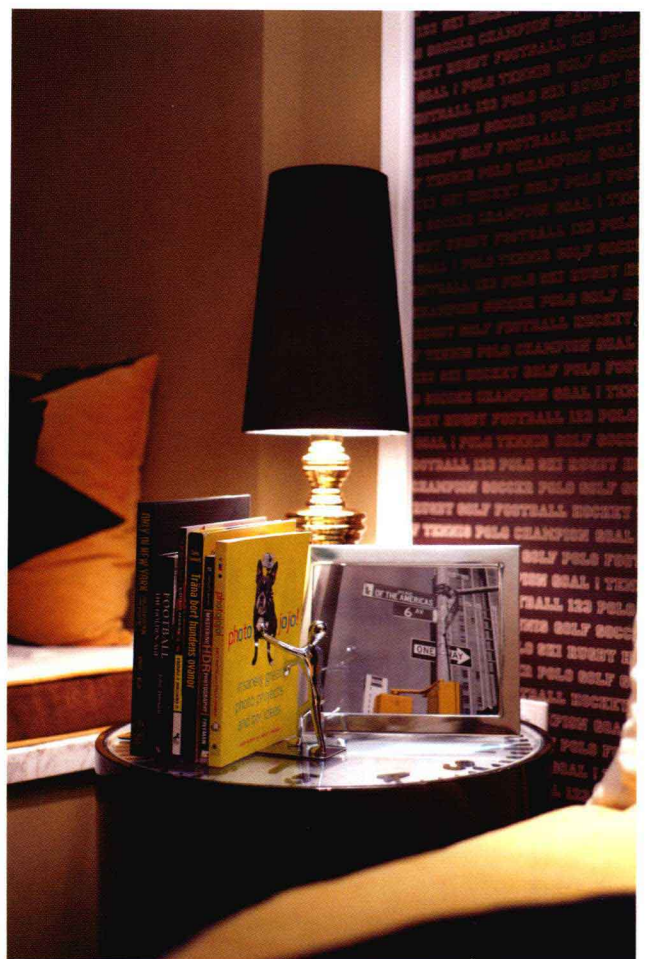












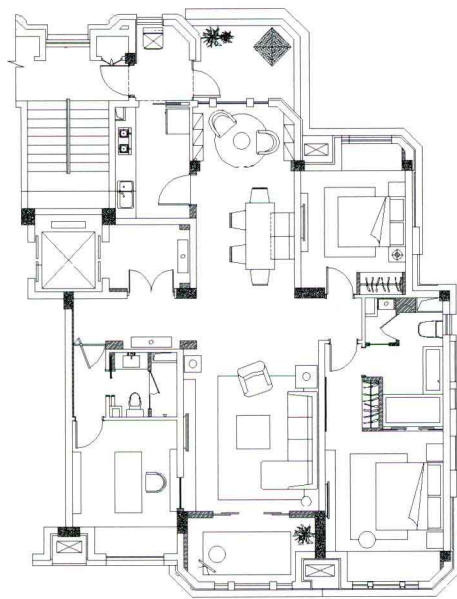


该案注重细节的刻画手法，恰到好处，为未来的住户带来时尚、怀旧的生活氛围。

为了体现雅皮士时代的流行元素，在空间布局上，设计师采用精巧的细节设计来提升空间的层次感与节奏感，在每一个角落都能体会到。设计师恰到好处地把旧时代的流行元素融入现代生活的空间中。置身其中，人们可以感受到20世纪80年代的气息，也可以感受到当中的时尚气息。

设计尽量避免出现过多繁复的造型，以一些跳跃的色调作为空间主调，为生活空间注入了一股怀旧时尚气息。简易的家具与色彩到位的布艺、饰品，为空间增添了耀眼的一笔。

在配饰风格上，家具与配饰的搭配点缀了每个空间，进一步展现自由随性的雅皮士风格。无论是客厅、餐厅还是卧室里都摆设了白色、黑色的饰品，为简洁怀旧的家居增添了时尚、活跃的气氛。







保利东湾样板间1

Poly East Bay Show Flat 1



设计师：王赟、王小峰

设计单位：广州尚逸装饰设计有限公司

建筑面积：160平方米

This case mainly styles with neo-classicism. Elegancy and harmony are the representing words of neo-classicism, just like a diversified way of thinking which combines nostalgic romance and modern people's needs towards life, containing elegancy and fashionable modern style, reflecting personalized aesthetic views and cultural tastes in the post-industrial era.

The duplex building has living room, dining room, kitchen and wine tasting area on the 1st floor and master bedroom, guest room and study on the 2nd floor. Blue and white are main colors, and the gesture is elegant and fantastic, with peaceful and meaningful tastes, depicting the nobility and elegance of the owner.

Each design is introduced by new elements of vigor and comfort, forming the vocabularies of blue and white in space, and showing

the spatial relationship neatly. There is the combination of white solid wooden line and frames in the vertical facade and ceiling in the bright living room. The open kitchen cannot only extend the space of kitchen and dining room, but also bring people closer. The wine tasting area is full of elegance, where people can relax and think about life.

The master bedroom and secondary bedroom are more likely to adopt warm and soft cloth and carpet. White and beige theme the space filled with warmth. The quiet study lets people enjoy the work.

Classical match of blue and white can be seen in the ornaments. The stainless steel connects perfectly with mirror, reflecting the subtle relationship between fashion and classicism by using the conflict between structure and material.



