

The Whole Record of Bid-winning Buildings III 中标建筑全程实录 III

佳图文化 编

华南理工大学出版社
SOUTH CHINA UNIVERSITY OF TECHNOLOGY PRESS

The Whole Record of Bid-winning Buildings III 中标建筑全程实录 III

佳图文化 编



华南理工大学出版社
SOUTH CHINA UNIVERSITY OF TECHNOLOGY PRESS

· 广州 ·

图书在版编目 (CIP) 数据

中标建筑全程实录 III / 佳图文化编. —广州: 华南理工大学出版社, 2013. 4
ISBN 978-7-5623-3881-9

I. ①中… II. ①佳… III. ①建筑设计—作品集—中国—现代 IV. ①TU206

中国版本图书馆 CIP 数据核字 (2013) 第 033903 号

中标建筑全程实录 III

佳图文化 编

出 版 人: 韩中伟

出版发行: 华南理工大学出版社

(广州五山华南理工大学 17 号楼, 邮编 510640)

<http://www.scutpress.com.cn> E-mail: scutcl3@scut.edu.cn

营销部电话: 020-87113487 87111048 (传真)

策划编辑: 赖淑华

责任编辑: 方 琅 赖淑华

印 刷 者: 广州市中天彩色印刷有限公司

开 本: 1016mm×1370mm 1/16 印张: 18

成品尺寸: 335mm×245mm

版 次: 2013 年 4 月第 1 版 2013 年 4 月第 1 次印刷

定 价: 320.00 元 (USD 60.00)

版权所有 盗版必究 印装差错 负责调换

Preface 前言

Excellent architectures come from the integration of artistry and functionality, with a long and complicated design process. How to deal well with the design key points properly in every step becomes an important issue concerned by most of the architects. The book is a fine work out of such conditions, exploiting the success mystiques of great bid-winning buildings.

From the well-known architecture design institutes overseas, the cases in the book are a great number of excellent bid-winning architectures in great cities at home or abroad. The selected projects cover the architecture types, i.e. residence, office, urban complex, hotel, resort and traffic hub etc. They are analyzed in general through the sections of Analysis, Planning, Rendering, Technical Drawing and Landscape etc. to present the unique design idea of each project. The drawings are detailed and professional with clear structure and contexts. The book is of more reading value from the aspect of the comprehensive and multi-angle presentation.

The book is classic for its ordered structure, clear emphasis and reasonable arrangement. We hope we could bring our readers different reading enjoyment from the selected projects and they could be inspired and enlightened by the cases to look into the success mystique of bid-winning architecture design by masters.

好的建筑往往是艺术性与功能性的结合体，其设计的过程往往是一个复杂而漫长的过程，如何在这个过程中很好地把握每个环节的设计要点，成为了众多设计师关注的一个问题。本书正是在这样的背景下诞生的一本探寻优秀中标建筑设计秘诀的精品读本。

本书挑选的案例均来自国外知名的建筑设计机构，涉及众多国内外知名城市的优秀中标建筑。精选的案例涵盖了住宅、办公、城市综合体、酒店、度假区以及交通枢纽站等建筑形态。在内容的展示上，分别以分析篇、规划篇、效果图篇、技术图纸篇以及景观篇等为节点全面解析中标建筑的独特设计理念。所选用的图纸详细专业，条理脉络清晰。此外，全方位、多视角的表现方式也让本书具有更强的可读性。

全书的脉络层次明晰，重点突出，结构安排合理，实为中标建筑方面的一本经典读本。我们希望透过这些精选的中标案例给广大的读者带来不一样的阅读感受，同时也相信本书能给读者以启发和借鉴，从中窥见名家中标建筑在设计方面的成功秘诀。



Commercial Complex Building and Planning 商业综合体建筑及规划

CONTENTS 目录

Commercial Complex Building and Planning | 商业综合体建筑及规划

002 Olympia 66
奥林匹亚 66

010 Colorful Yunnan First City
七彩云南第壹城

022 Civic, Cultural and Retail Complex, Singapore
新加坡 CCRC 综合体

042 Suning Chengdu Mixed-Use Project
苏宁成都综合业态项目

Office Building and Planning | 办公建筑及规划

054 Zendai Bund International Finance Center
上海证大国际金融中心

066 Fusionopolis
新加坡启汇城

Culture & Art Building and Planning | 文化艺术建筑及规划

082 Dance and Music Center
音乐舞蹈中心

110 Yunnan Art Theatre
云南艺术剧院

128 Tianjin Binhai Art Center
天津滨海艺术中心

142 King Saud University Campus Master Plan
沙特国王大学校园总体规划

Urban Planning and Design | 城市规划设计

166 West Kowloon Terminus
西九龙总站

186 Changsha Xinhe Delta
长沙新河三角洲

204 Jiahufanya Habor Master Planning and Design
佳湖泛亚港规划设计

216 Moscow Master Plan
莫斯科总体规划

Residential Building and Planning | 住宅建筑及规划

238 Sanya Residential Development
三亚住宅开发项目

256 Shoukai Longdongbao Master Plan
首开龙洞堡规划设计

262 Shenzhen Eco City Garden Tower
深圳生态城市花园塔楼

Commercial complex is the complicated and unified complex with multi-function and high efficiency, combining over three functions such as business, office, residence, hotels, exhibitions, caterings, conferences and entertainments. It has changed the unitary commercial development and provided the comprehensive supporting service. The differences between typical urban complex buildings would be introduced in this chapter on the aspects of design concept, structural layout and functions.

商业综合体即是将城市中的商业、办公、居住、旅店、展览、餐饮、会议以及娱乐等城市生活空间的三项以上功能进行组合，形成一个多功能、高效率、复杂而统一综合体，它不仅解决了商业发展单一的问题，而且还提供了一种综合性的配套服务。本章节将介绍一些典型城市综合体建筑在设计理念、结构布局以及建成功效等方面的不同之处。

Olympia 66

奥林匹亚 66

Location: Dalian, Liaoning, China

Clients: Hang Lung Properties

Architectural Design: AEDAS

Land Area: 63,400 m²

Total Floor Area: 221,900 m²

Completion Time: 2014

项目地点: 中国辽宁省大连市

客 户: 恒隆地产

建筑设计: 凯达国际

占地面积: 63 400 m²

总建筑面积: 221 900 m²

完成时间: 2014 年

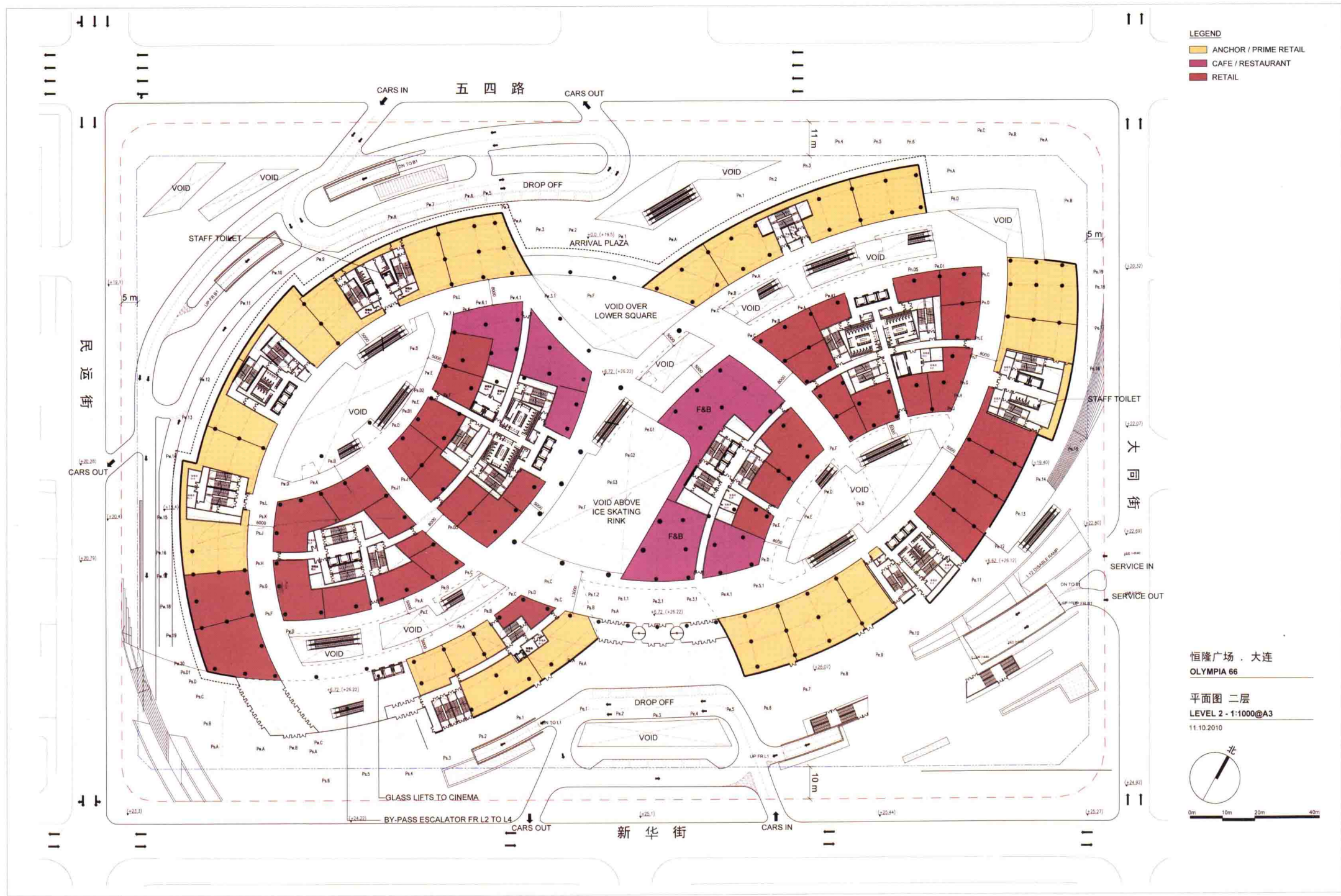
Planning

The form enhances urban connectivity and integration through multiple entrances. Olympia 66 is totally permeable on the ground floor. Main entrances are prominently defined and open into generous event spaces, allowing a pause before joining the vortex of circulation. The sequenced nodes and spaces along the retail route provide opportunities to rest at a cafe or take in an exhibition. The sequence culminates with leisure and activities at the upper floors that lead to landscaped terraces. The terraces wrap around the building where users can either enjoy a coffee overlooking Olympic Square or walk up to the central roof garden.

规划篇

项目通过设置多个出入口来提高与城市之间的连接。奥林匹亚 66 主要入口的显著位置的定义和开阔的活动空间,使其营造出一种停顿感,然后再沿阶梯向上环绕。零售点、咖啡馆或展览厅可供人休息;较高的楼层有观景台阶可供人休闲和活动。阶梯环绕,游人可以在这里品尝咖啡,俯瞰奥林匹克广场或步行到中央屋顶花园。



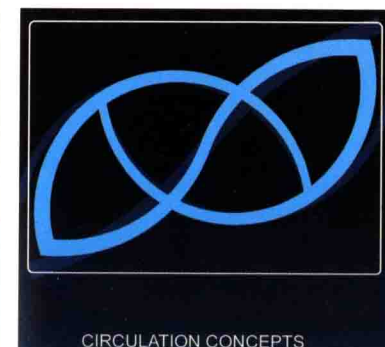
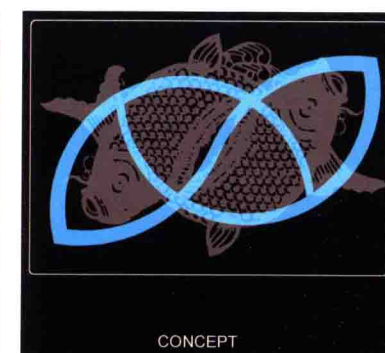
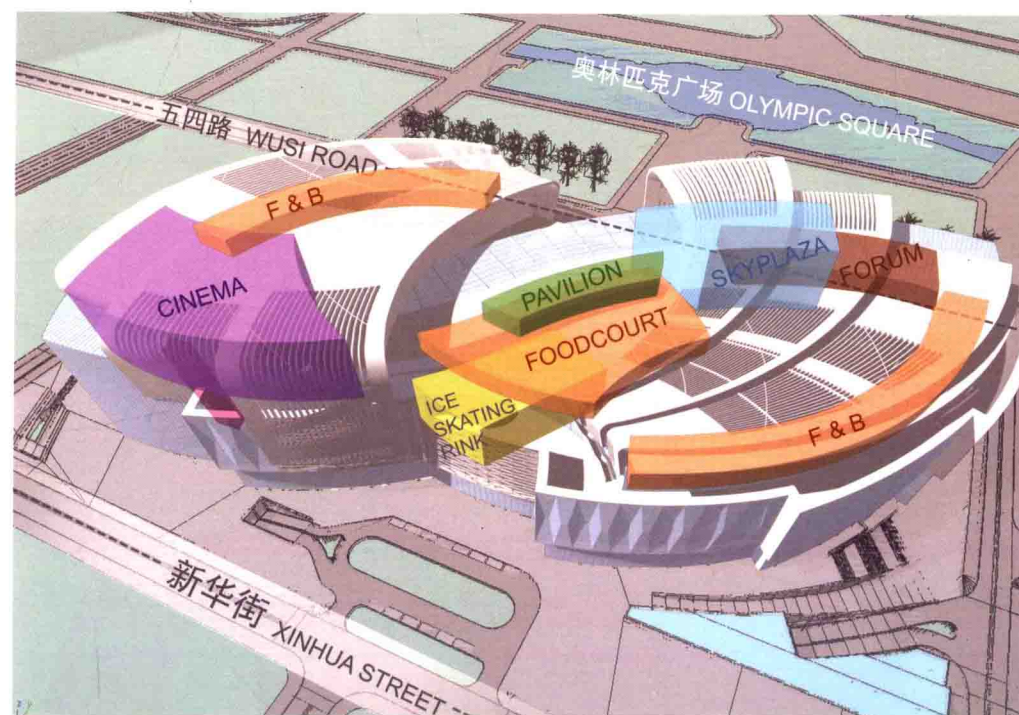
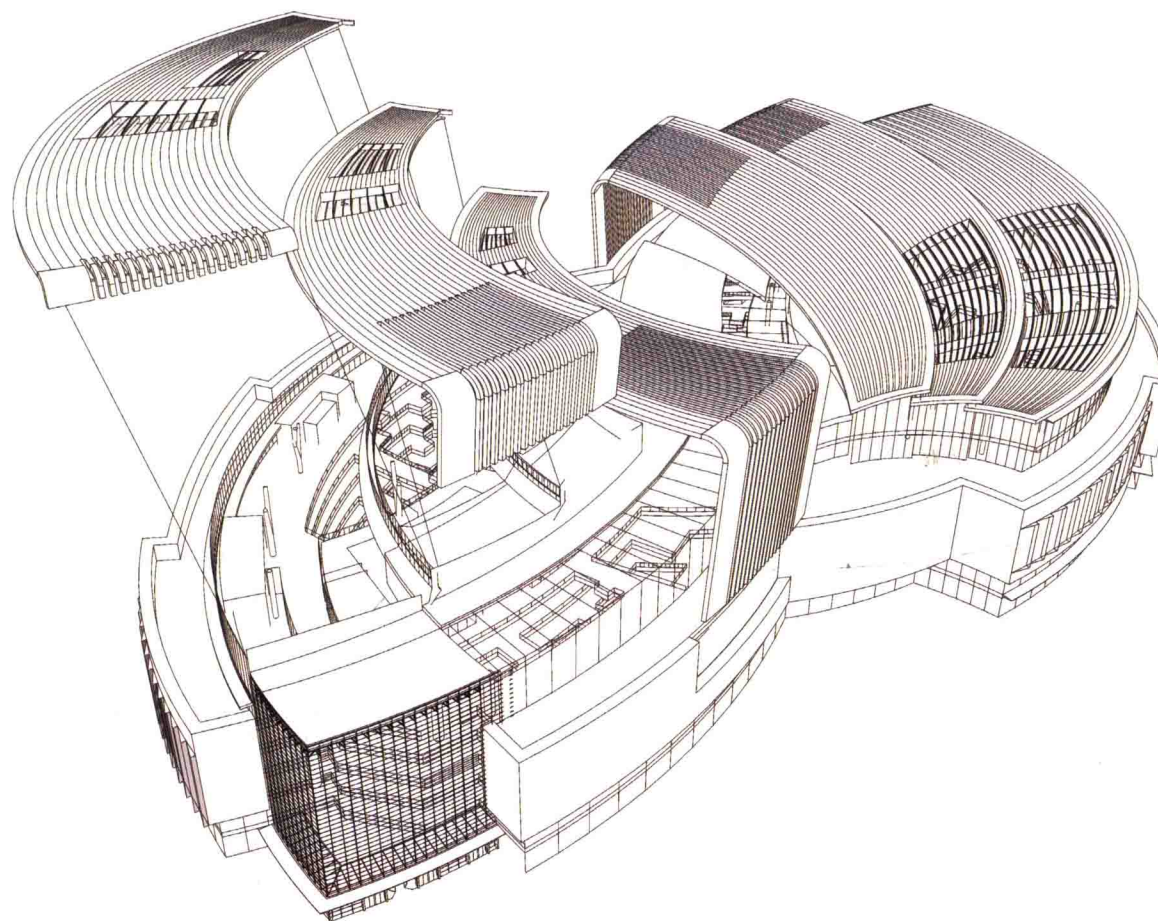


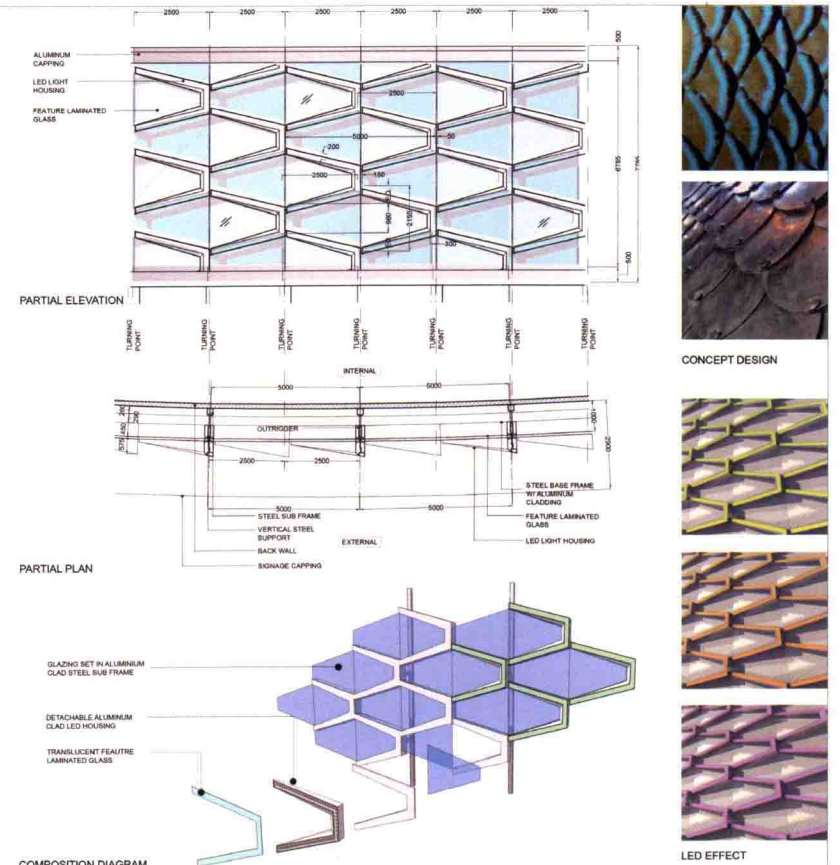
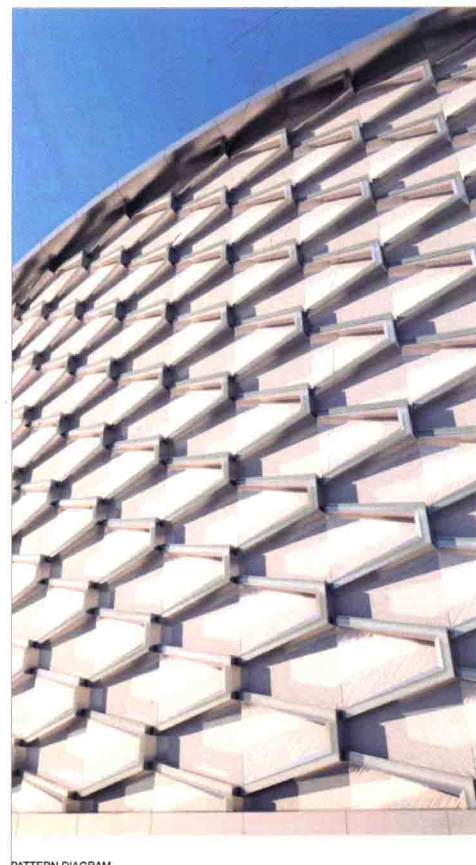
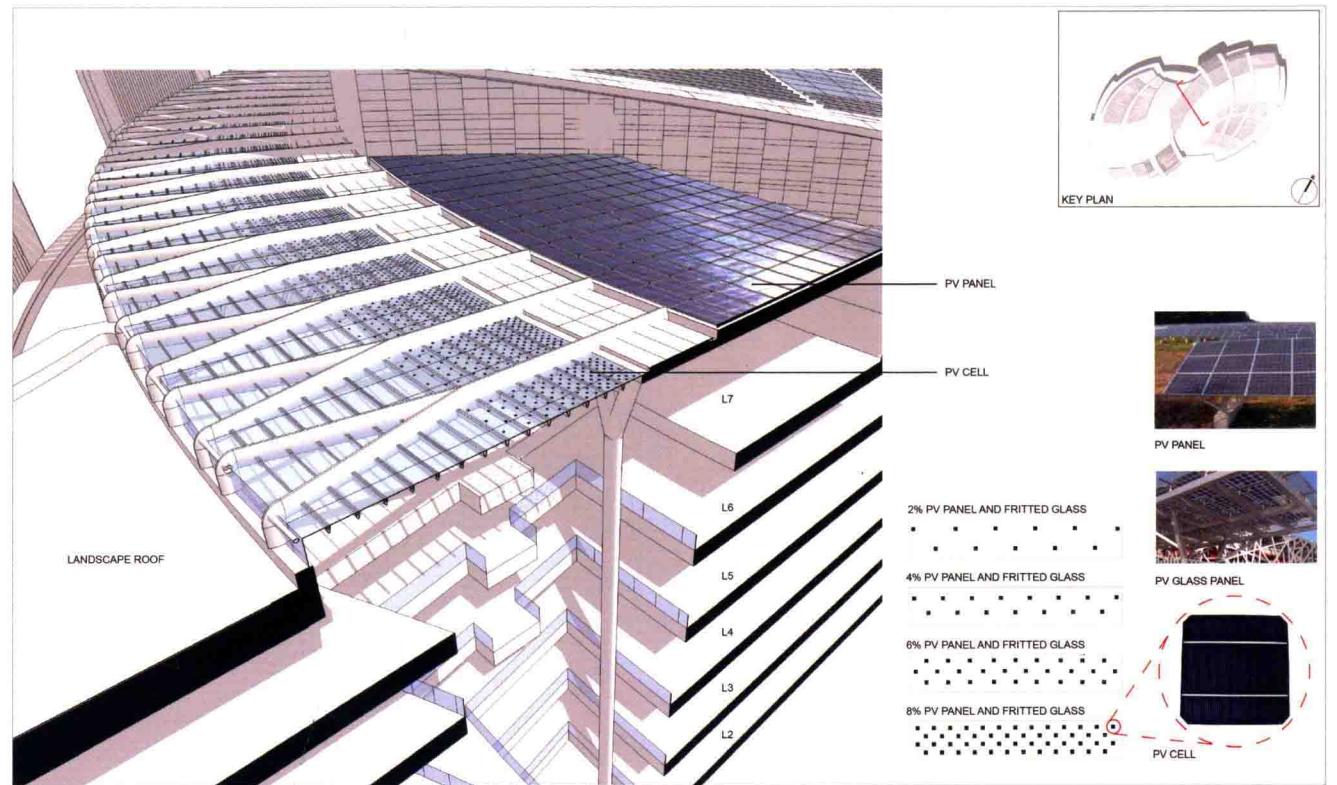
Analysis

General Situation: The Olympia 66 retail development is located at Wusi road in the Xigang District, one of the most prominent commercial avenues in Dalian. It occupies a site of 63,400 m² with a total gross floor area of 221,900 m². The site is adjacent to the Olympic Square, which is one of a sequence of squares located on the main avenue of Zhongshan road. To the east is People's Square, the home of the municipal government, and to the west is Xinghai Square.

分析篇

总体概况：项目位于大连市西岗区五四路的商业区，毗邻位于中山路的主路道处的奥林匹克广场。项目占地面积 63 400 m²，总建筑面积 221 900 m²。东面是人民广场及市政府所在地，西面是星海广场。



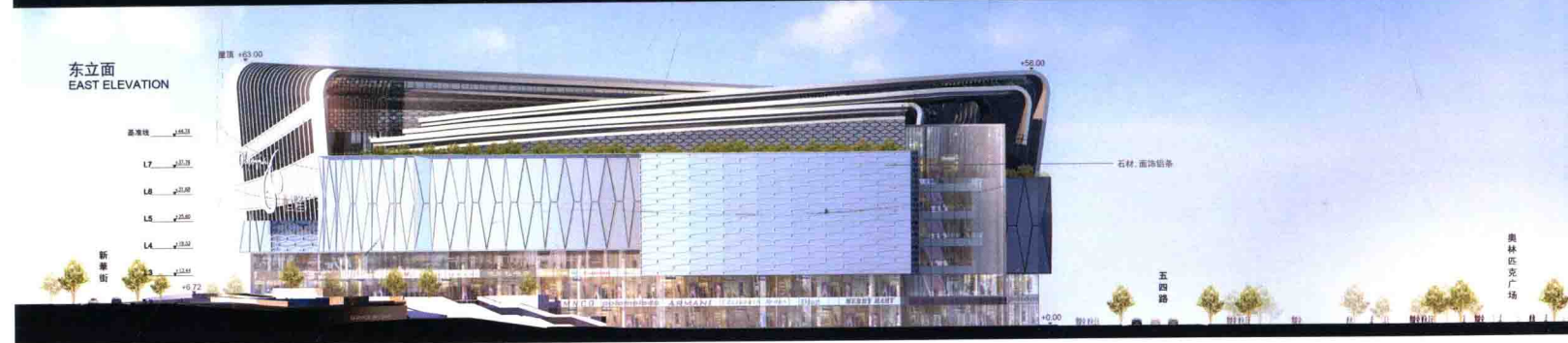


Technical Drawing

The offset curving arcs of internal circulation resemble the body of the dancing carp. The body is expressed as a series of simple shells with the tail flowing over the curving central spine. The shells on the roof are layered to create clear story glazing, allowing direct light and reflected light into the two atrium spaces. The largely solid insulated roof prevents heat loss in winter and solar gain in summer, creating a simple environmental solution that is responsive to the northern Chinese climate. The additional energy efficient building services plus the integration of photovoltaic panels will deliver a LEED gold rating for the development.

技术图纸篇

建筑轮廓弯曲循环的弧线好似跃动的鲤鱼。表面为一系列简单的壳与尾流过的弯曲形态，通过屋顶上的贝壳式分层的清晰玻璃窗，让光线直射和反射光分隔在两层空间。考虑到中国北方的气候条件，项目设计了一个简单的固体绝缘屋顶，以防止冬季热能损失和夏季太阳能增益。集成的光伏电池板提供了建筑能耗需要的补充，项目也因此获得美国绿色建筑金质奖。



Rendering

The project brief calls for a response that is iconic in defining a city destination. Our vision was to create a contemporary statement with an oriental overtone. The concept references the twin carp, a typical symbol in Chinese New Year paintings, synonymous with wealth and abundance.

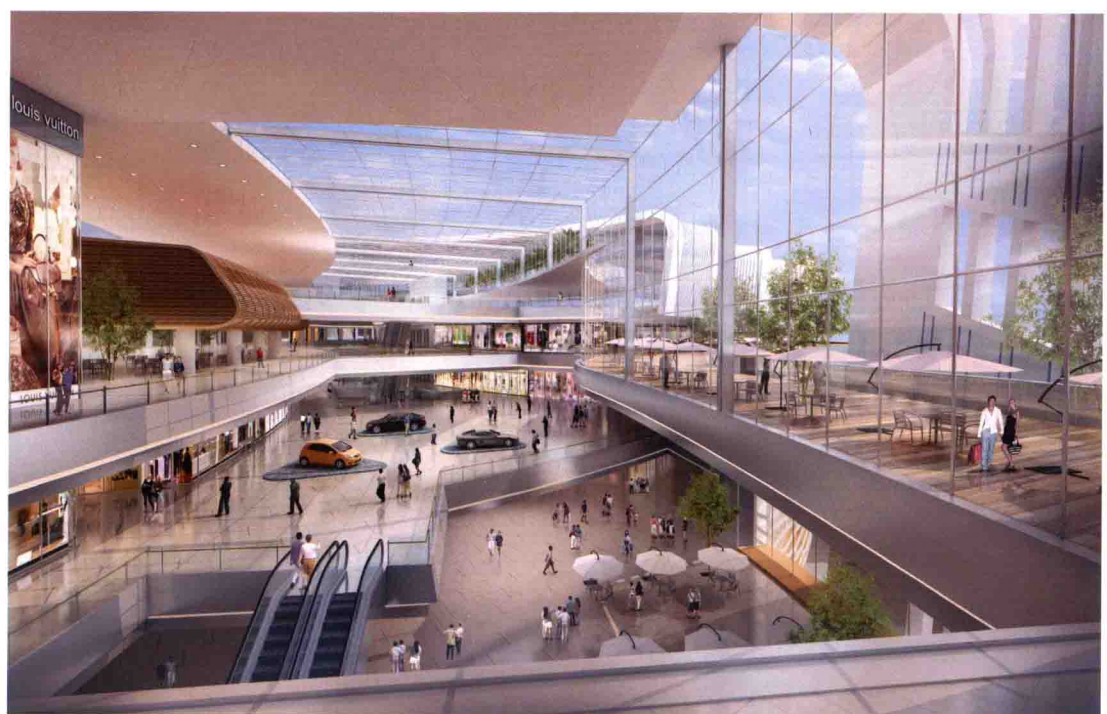
The interplay of two carps swimming inspired forms containing a dynamic loop circulation flowing through a continuous chain of retail and atrium activities and creating an exciting and diverse lifestyle experience.

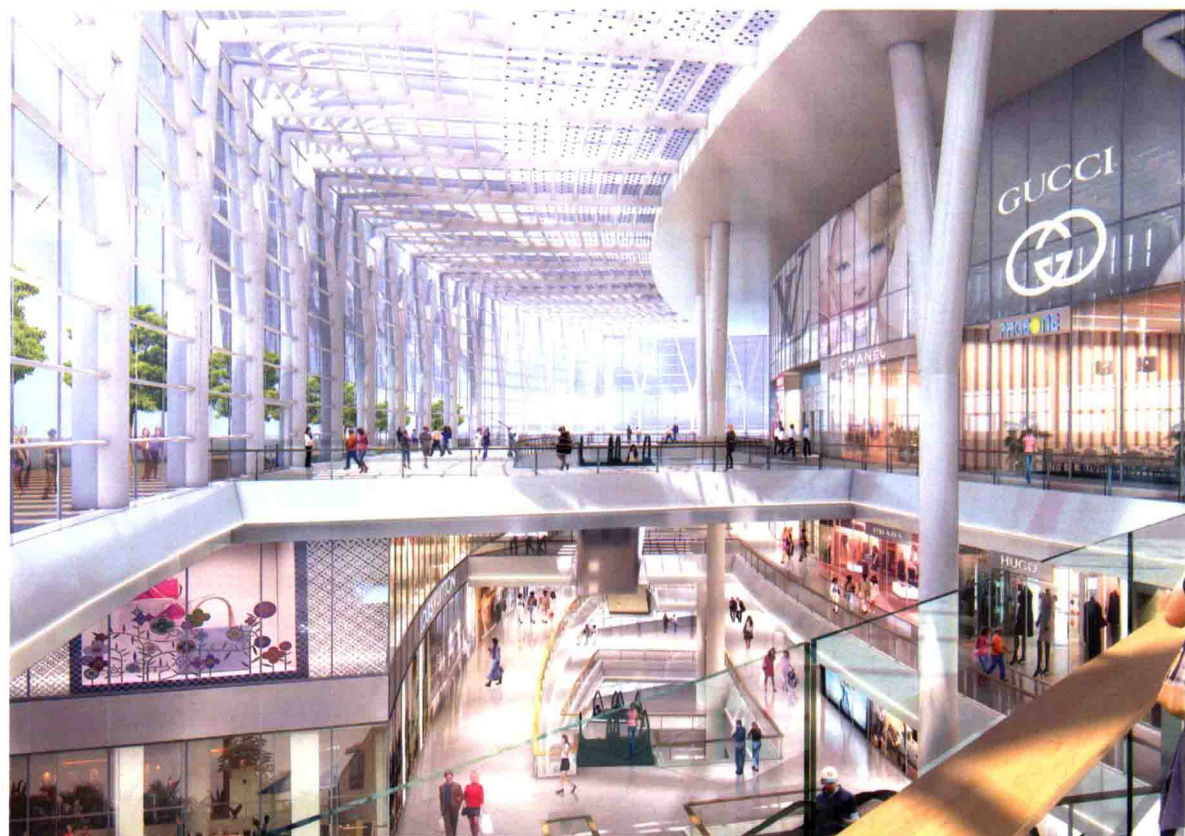
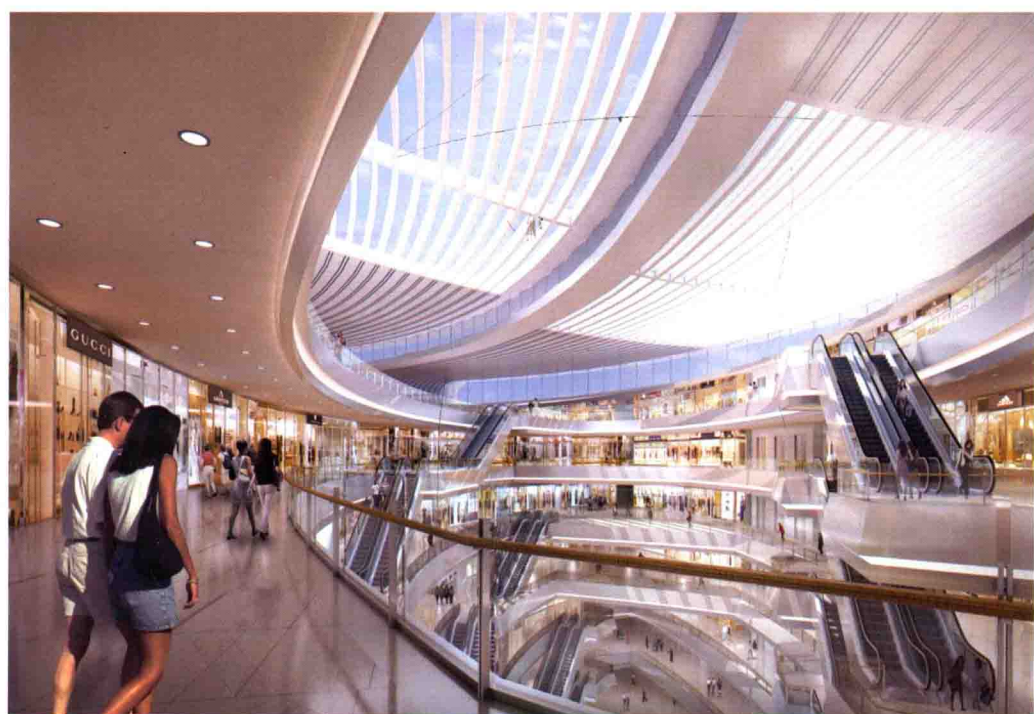
效果图篇

该项目寓意简要地定义一个城市，设计的愿景是创建一个有当代东方之韵的项目。概念引用双鲤鱼——中国年画中的一个典型符号，象征着富足。

设计灵感受鲤鱼游动形态的启发，包含一个动态的流动循环，通过一个连续的局部和中央的互动，创造出令人兴奋和多样化的生活体验。







Colorful Yunnan First City

七彩云南第壹城

Location: Kunming, Yunnan, China

Architectural Design: RTKL

Planning net Land Area: 99,400 m²

Total Construction Area: 703,987 m²

The volume rate: 4.67

Green rate: 40%

项目地点: 中国云南省昆明市

建筑设计: RTKL

净用地面积: 99 400 m²

总建筑面积: 703 987 m²

容积率: 4.67

绿地率: 40%

Planning

Project has a net land area of 99,400 m², total construction area 703,987 m², and 11,000 parking spaces. Project's 288 m high five-A grade A office building, is the first high-rise project in Chenggong district; Kunming has the largest sunk sunlight business street and a building area of 150,000 m² with the biggest southwest of SHOPPING MALL, including department stores, cinemas, large ice rink, fitness center, supermarkets and other complex formats, golden Eagle stores, Poly Theater on line, Carrefour, WAL-MART, Gome, five star appliance, the French supermarket decathlon movement, Watsons, MacDonald and other business and international and domestic first-line brand have said they will be assigned to this project, and have substantial participation to the project cooperation.

