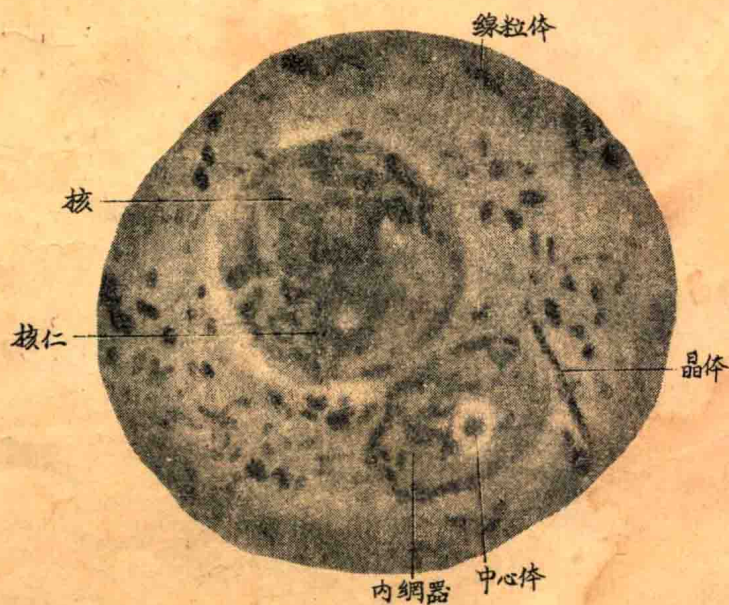
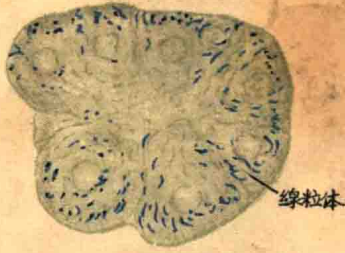


图一. 人体的一些不同类型的细胞

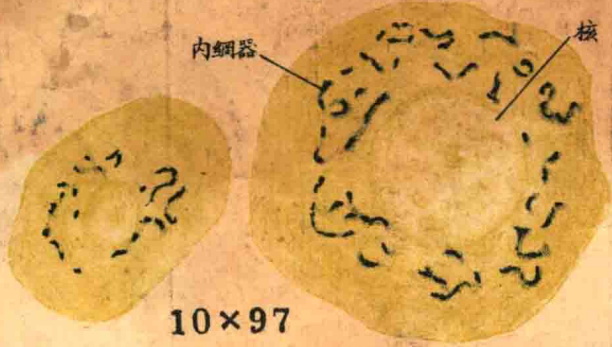


图二. 分相頭显微镜照像, 示原髓细胞的核和胞质内细胞器



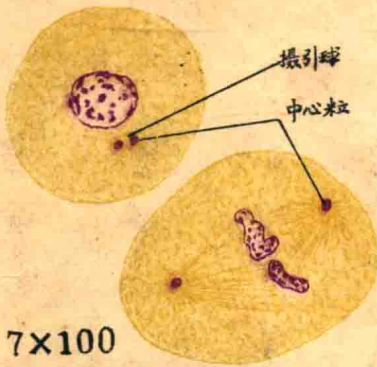
10×97

1. 铁苏木素染色 胰腺泡示线粒体



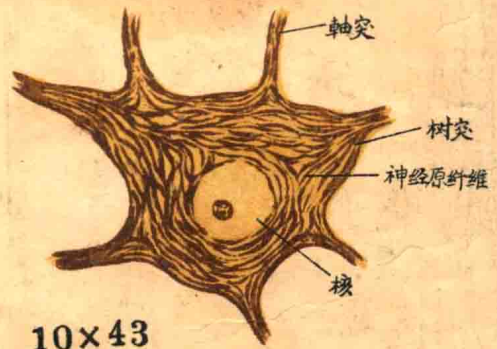
10×97

2. 银酸染色 脊神经节细胞示内网器



7×100

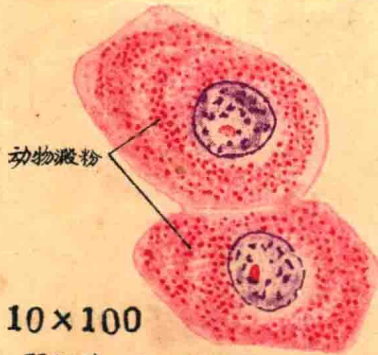
3. 虫卵细胞一示中心体(铁苏木染色)



10×43

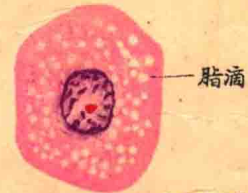
4. 镀银一脊髓前面细胞示神经原纤维

图三. 细胞器



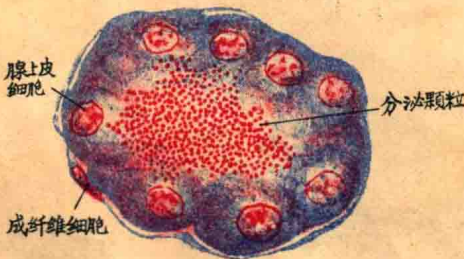
10×100

1. 肝细胞一示动物淀粉



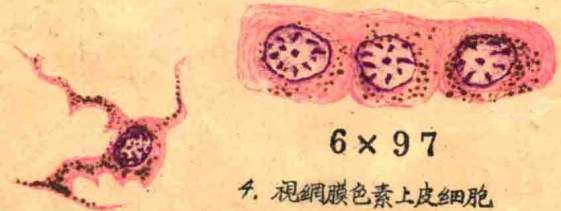
10×97

2. 肝细胞 HE. 示脂滴



10×97

3. 胰腺泡马氏染色分泌颗粒

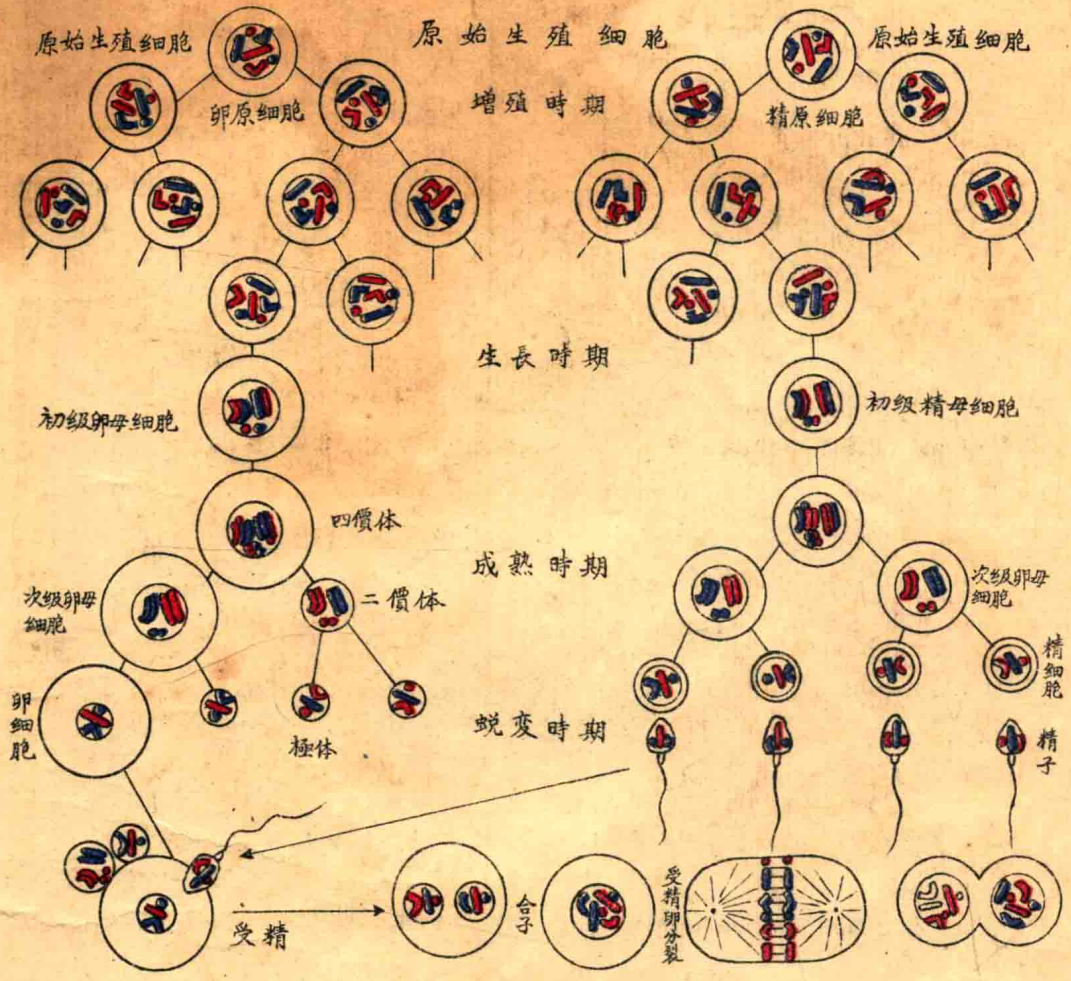


6×97

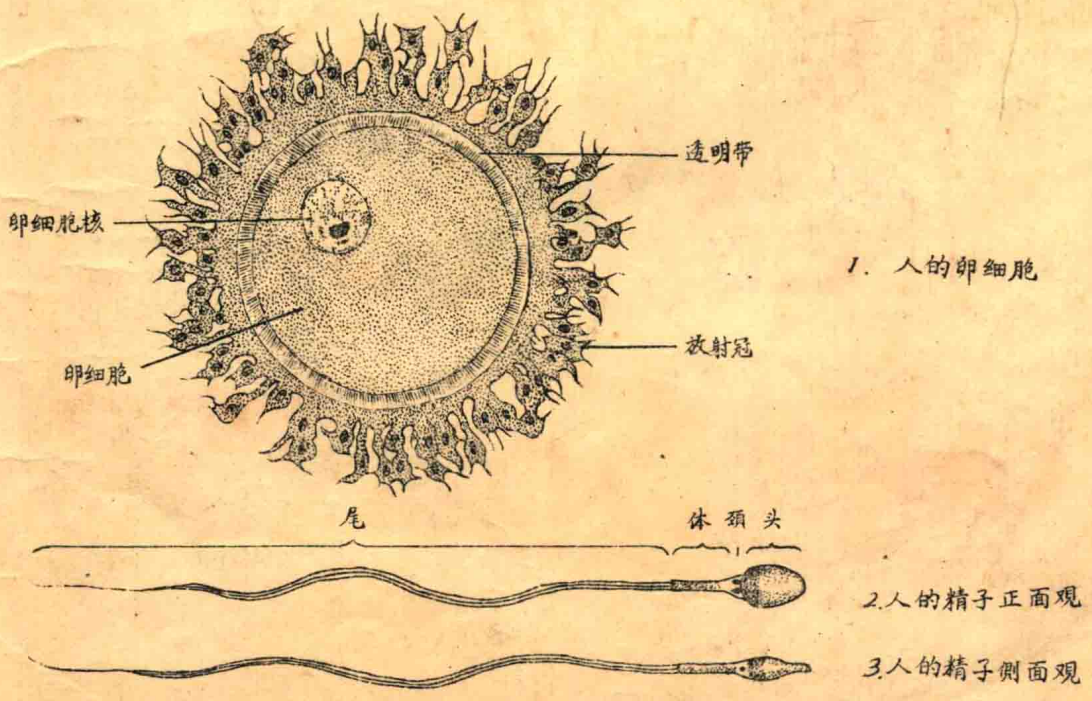
4. 视网膜色素上皮细胞

皮肤表皮成黑色细胞

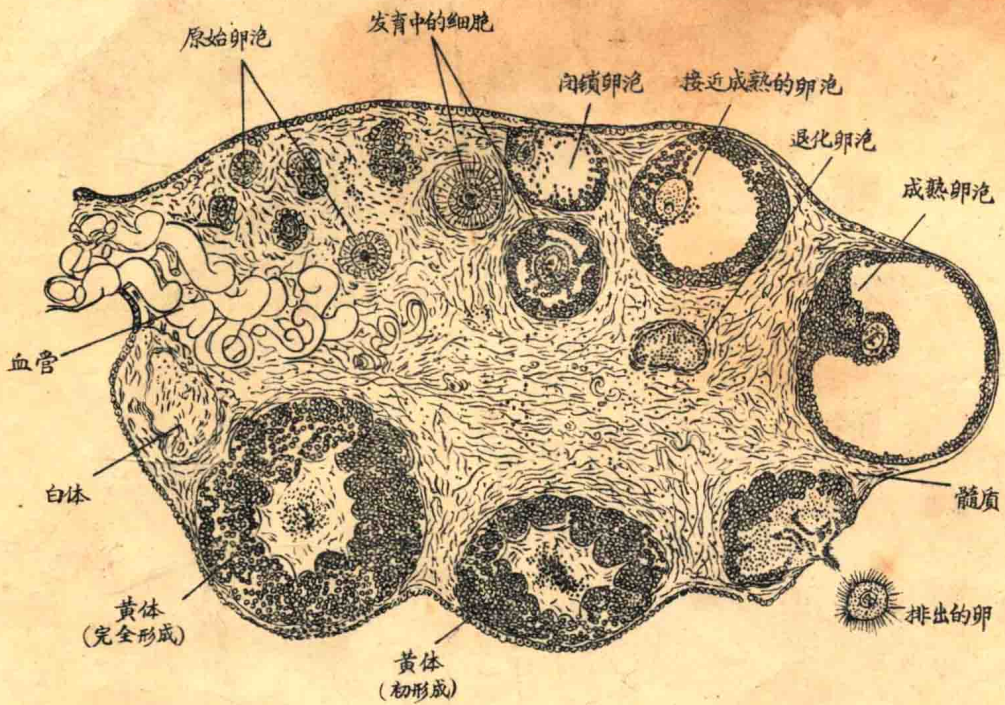
图四. 细胞质内的几种色涵物



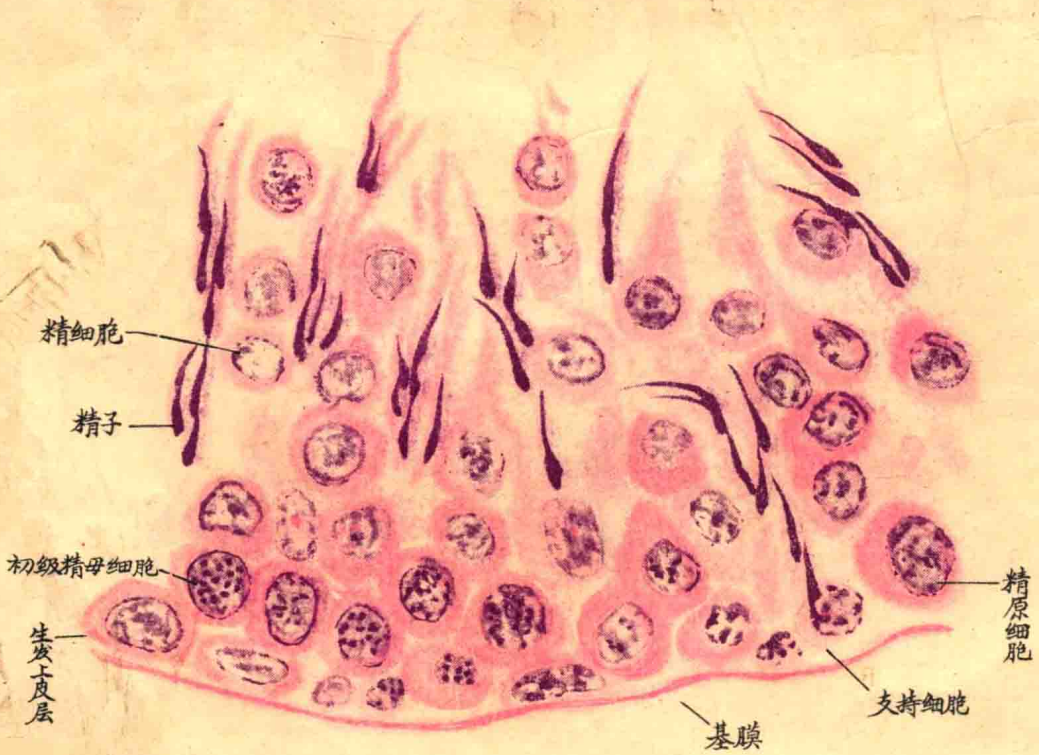
图五. 卵子和精子发生及受精



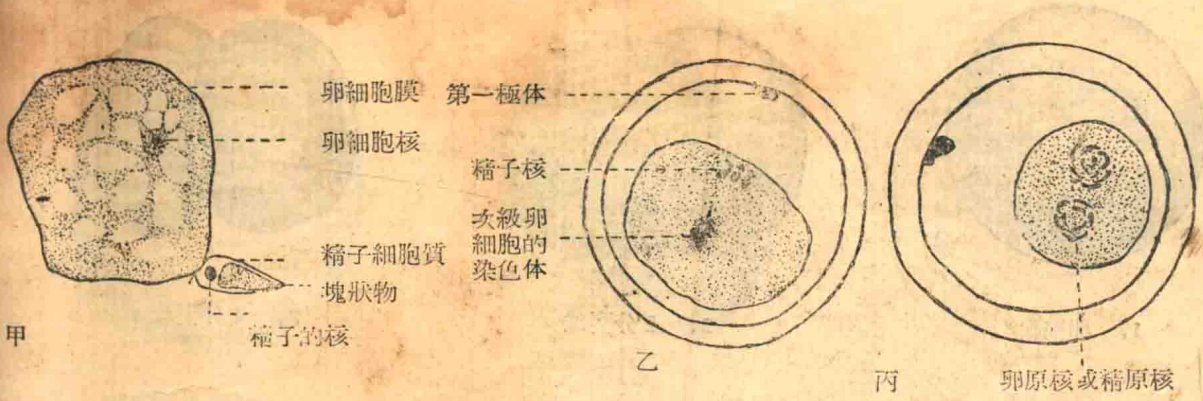
图六 人的精子与卵细胞



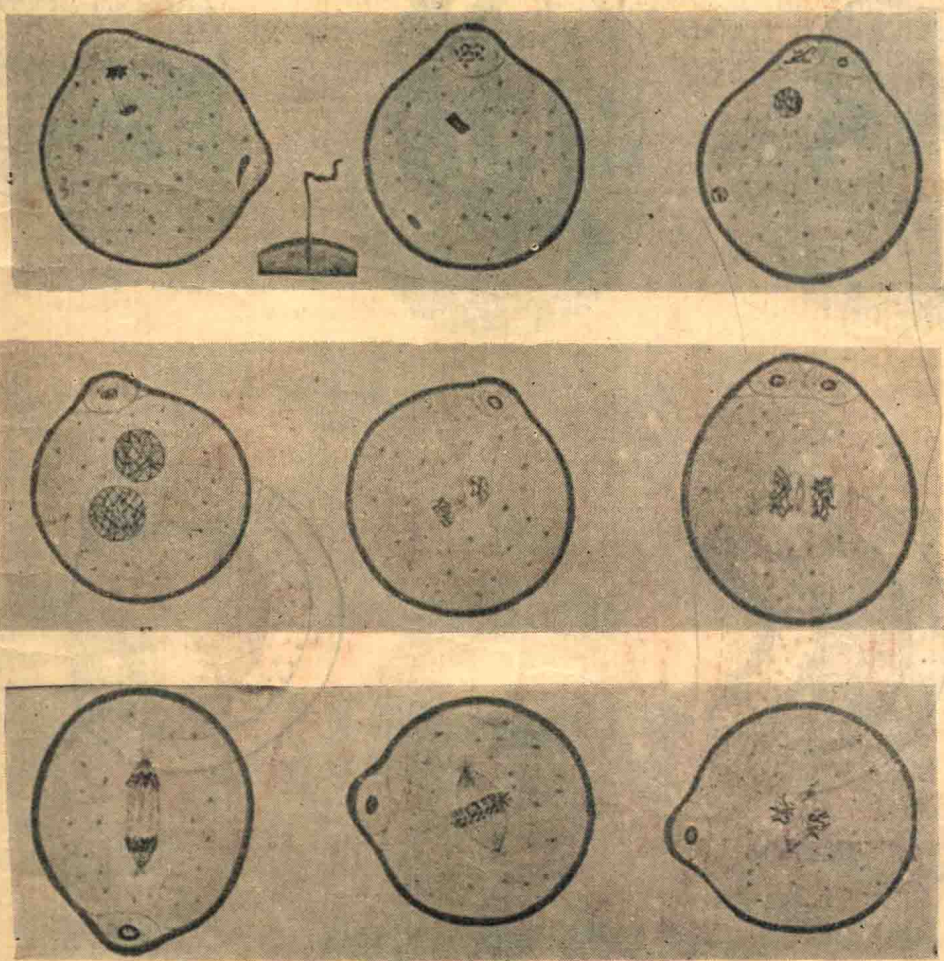
图七 卵巢(图解式以显示卵泡的来源生长、成熟及排卵、黄体的形成及退化)



图八. 兔曲细精管一部, 示精子发生

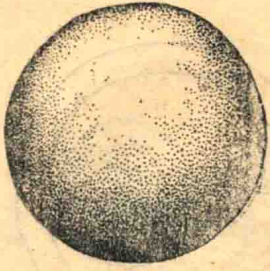


圖八 馬蛔虫卵受精

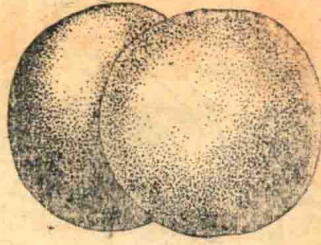


圖九 哺乳类小白鼠卵受精

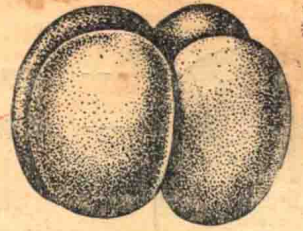
1—3 精子穿入和第二極體形成 4—5 原核發育 6—10 受精卵第一次分裂階段



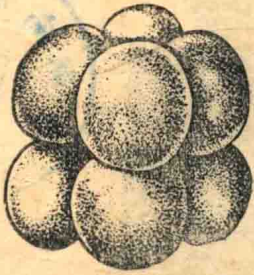
1、卵細胞



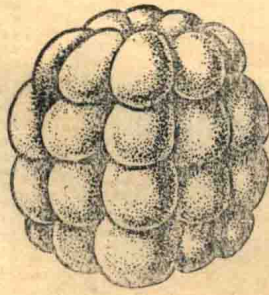
2、2分裂球



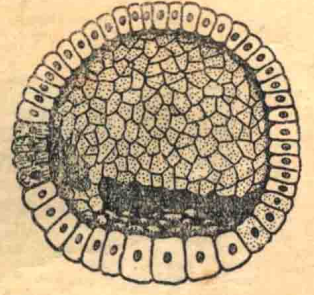
3、4分裂球



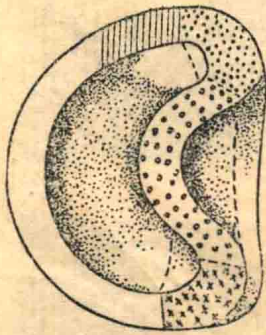
4、8分裂球



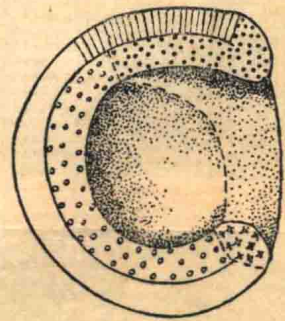
5、32分裂球



6、囊胚內凹

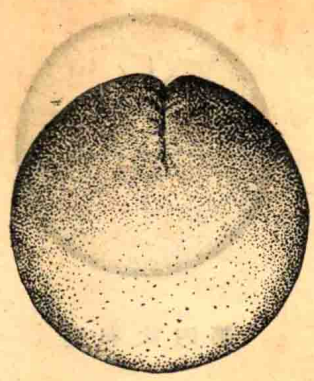


7、原腸胚早期

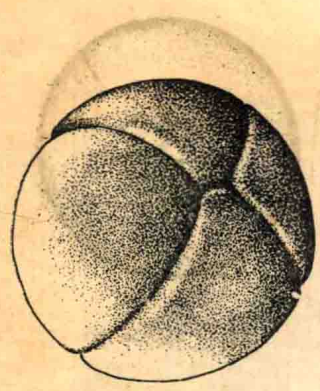


8、原腸胚晚期

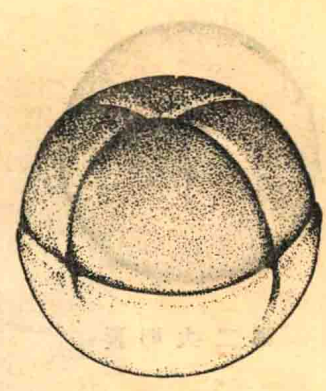
圖十 文昌魚卵裂囊胚和原腸胚形成



1、第一次分裂



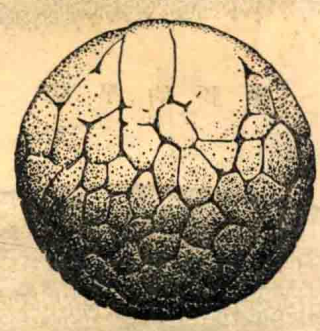
2、第二次分裂



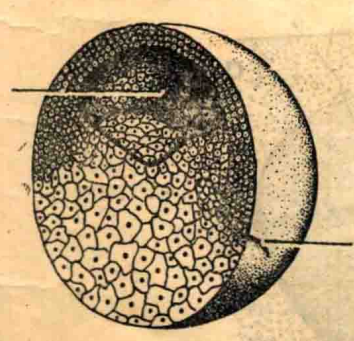
3、第三次分裂



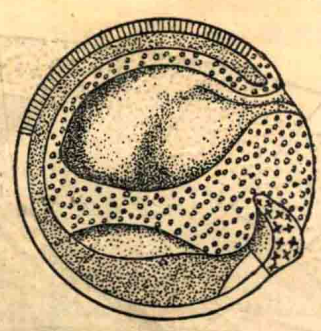
4、卵裂晚期



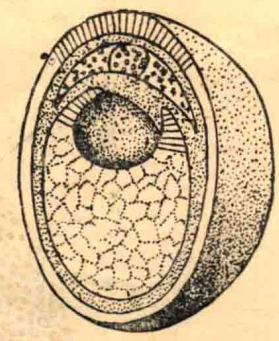
5、囊胚切面



6、囊胚開始內旋

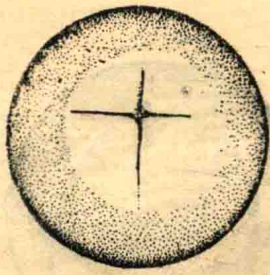


7、原腸胚早期

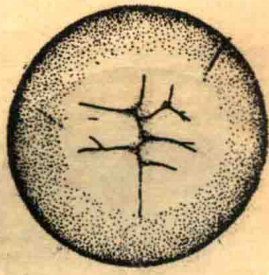


8、原腸胚晚期

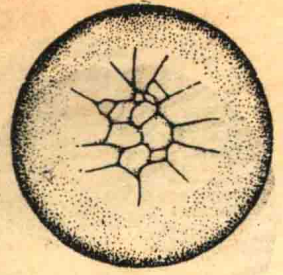
圖十 蛙卵裂囊胚和原腸胚形成



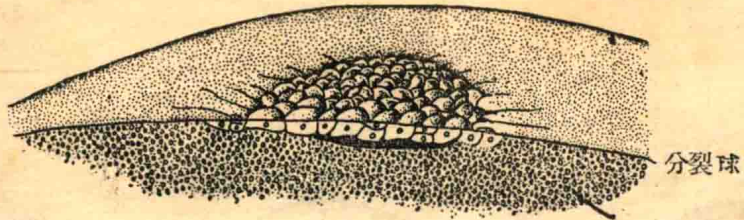
第二次卵裂



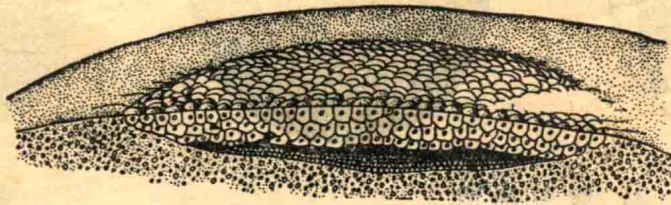
第三次卵裂



第四次卵裂



囊胚的早期

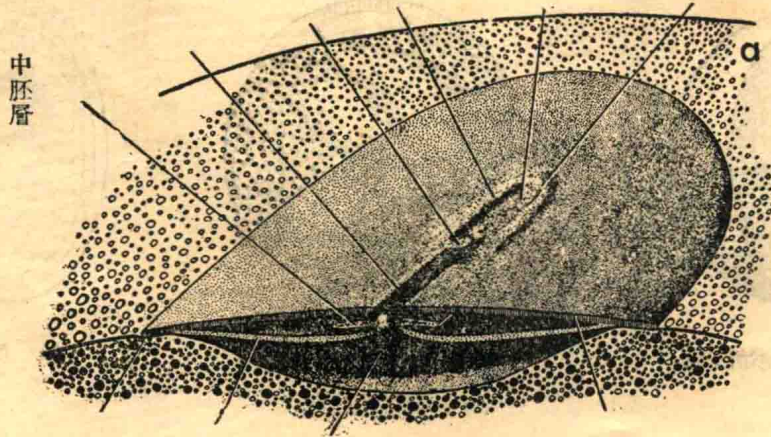


原腸胚期

原線和原溝

脊索

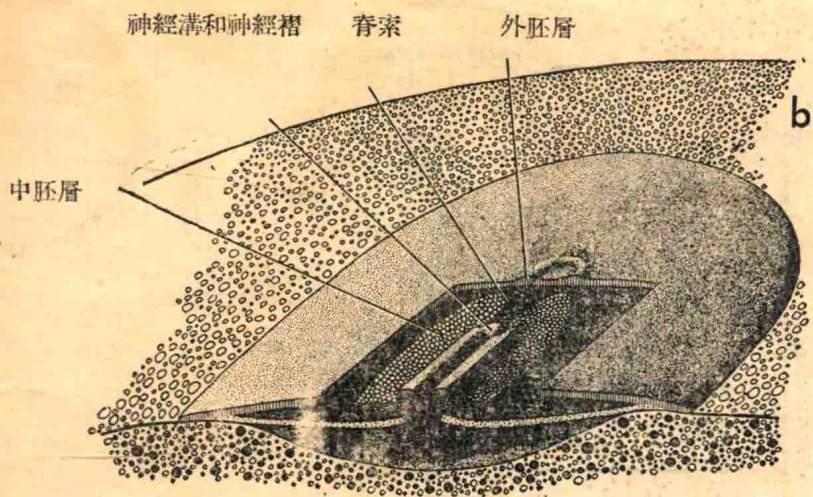
神經溝



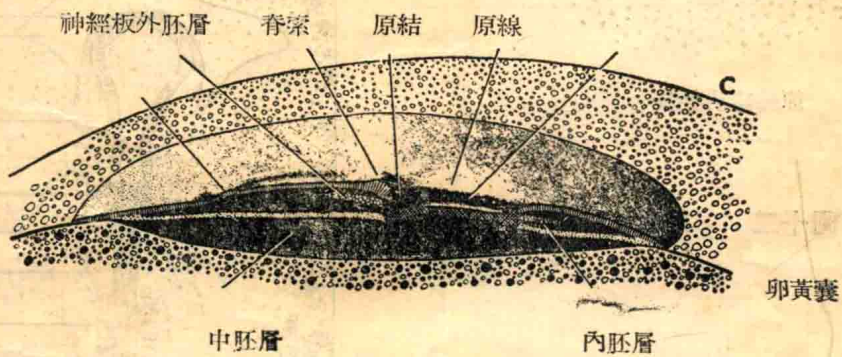
內胚層

外胚層

原線時期橫切

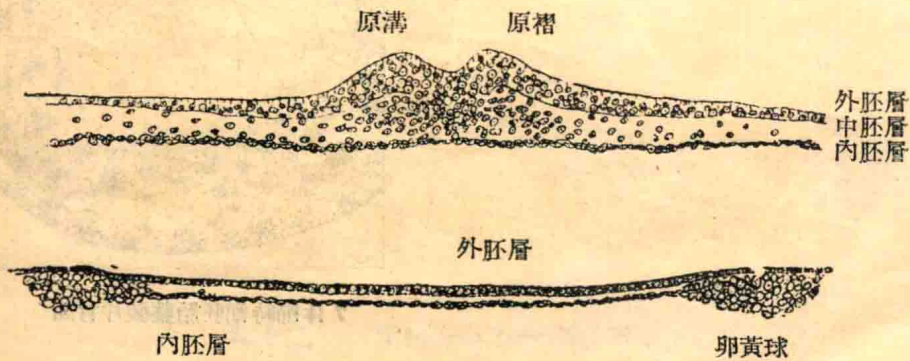


切除外胚層示中胚層

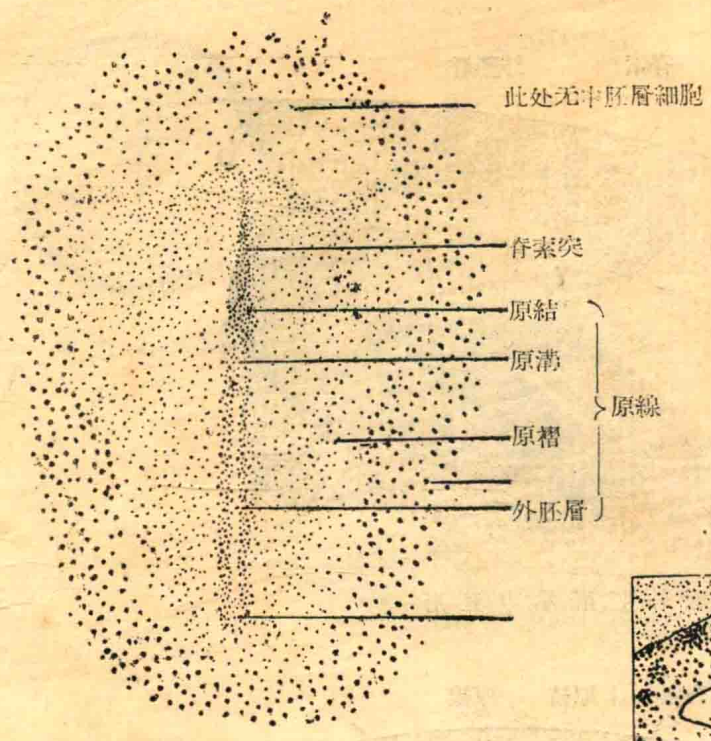


原線時期縱切

圖十一 鷄卵裂、囊胚及原腸胚成形

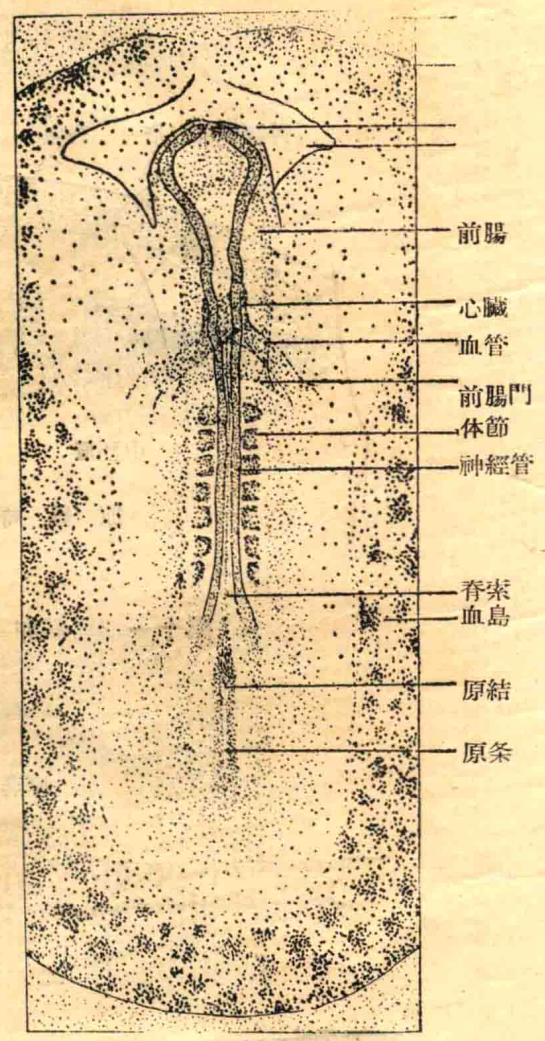


鷄胚原線時期橫断面

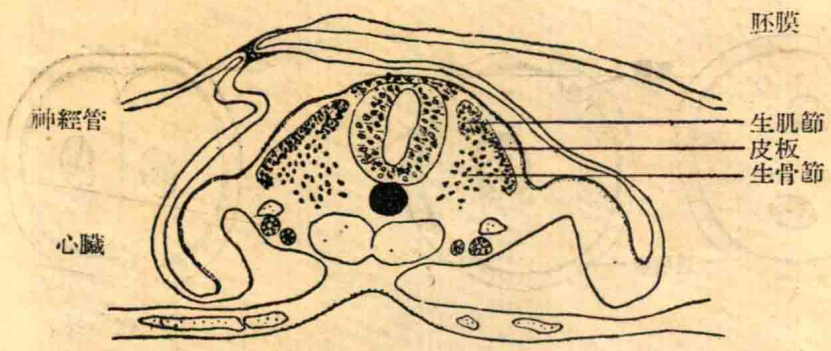


原线时期整装

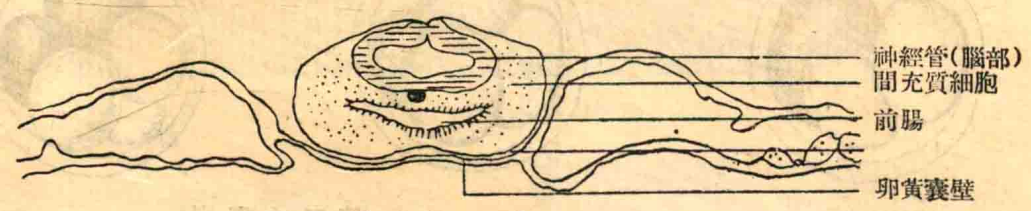
圖十二 鷄胚原線时期



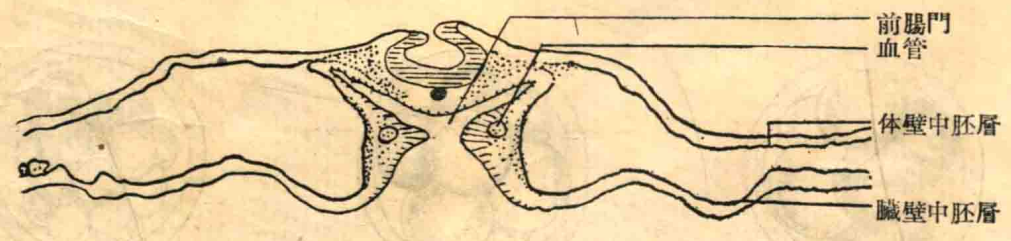
7体節時鷄胚整裝片背面



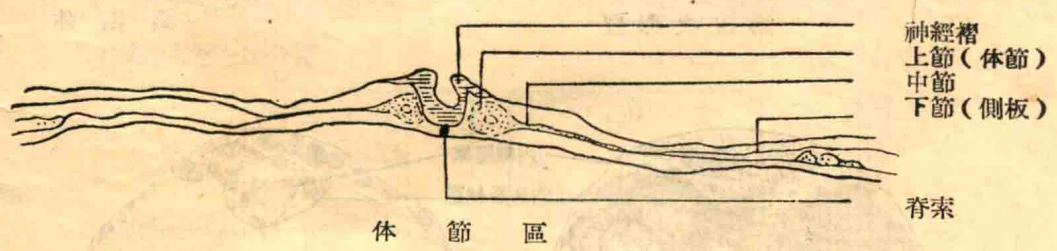
鷄胚示體節分化



前腸區



前腸門區



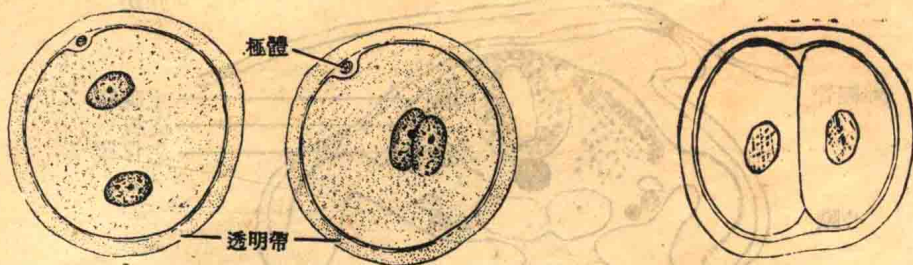
體節區



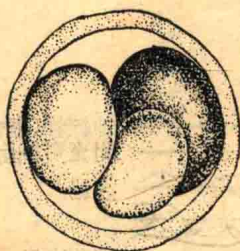
原線區

圖十二 鷄胚七體節時期橫斷面

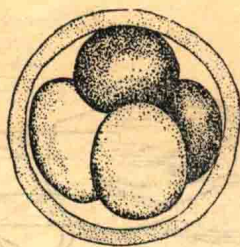
三十圖



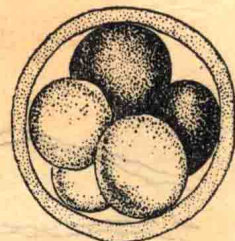
第一次卵裂



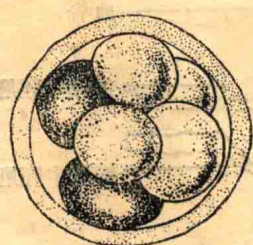
第二次卵裂



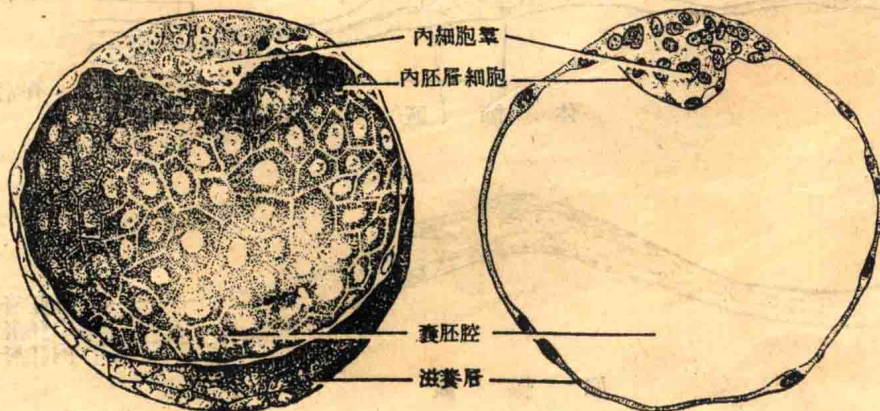
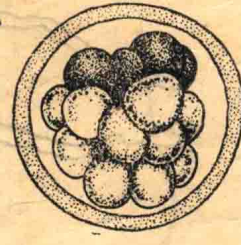
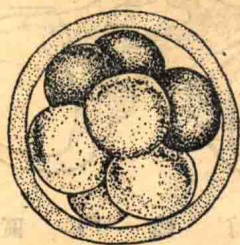
第三次卵裂



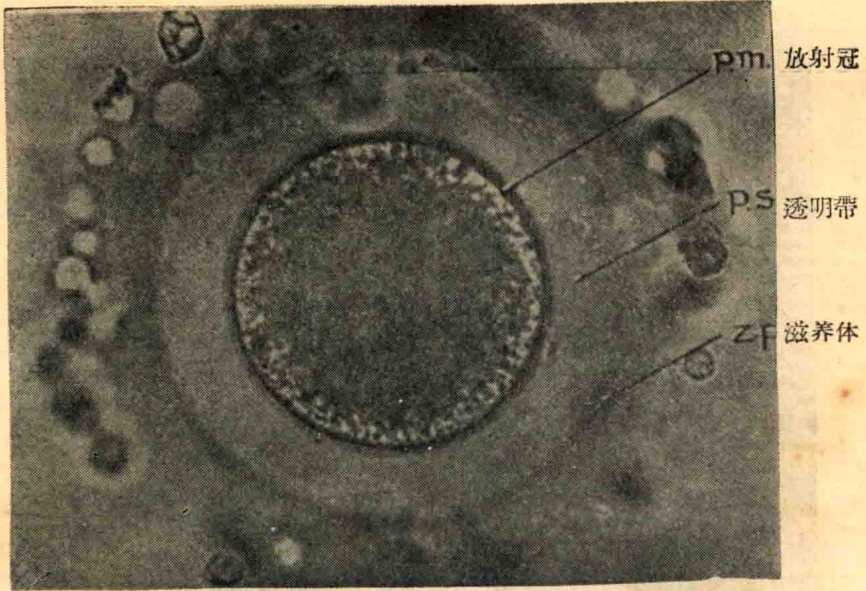
第四次卵裂



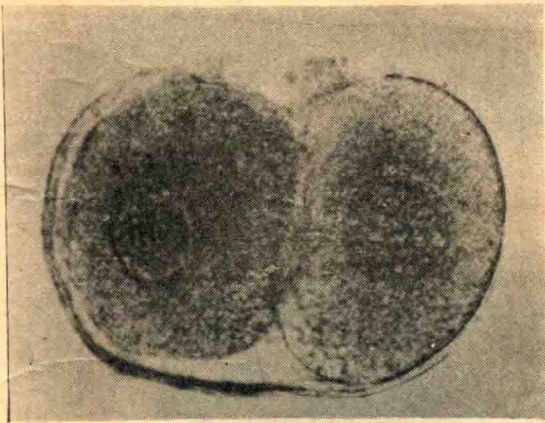
桑椹體



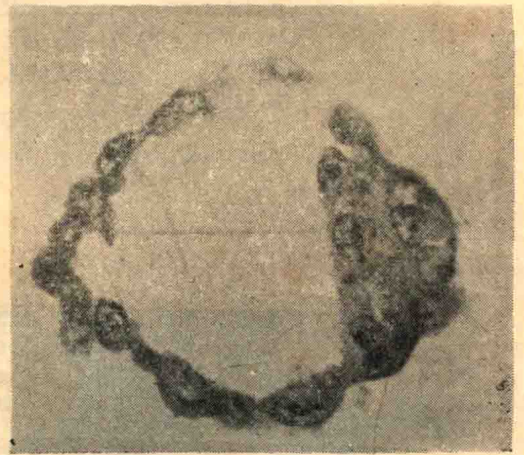
圖十三 猴的卵裂和囊胚



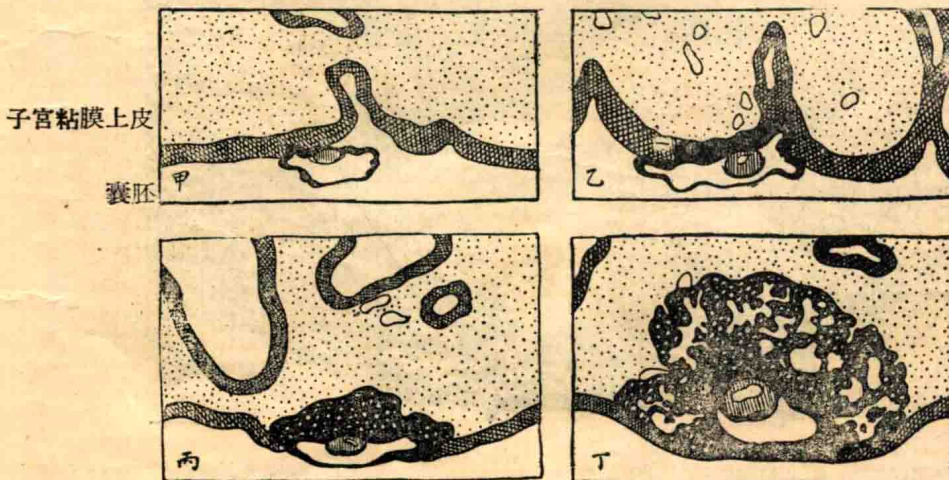
人的輸卵管內的未受精卵



人的受精卵第一次分裂



人的正常人囊胚14天

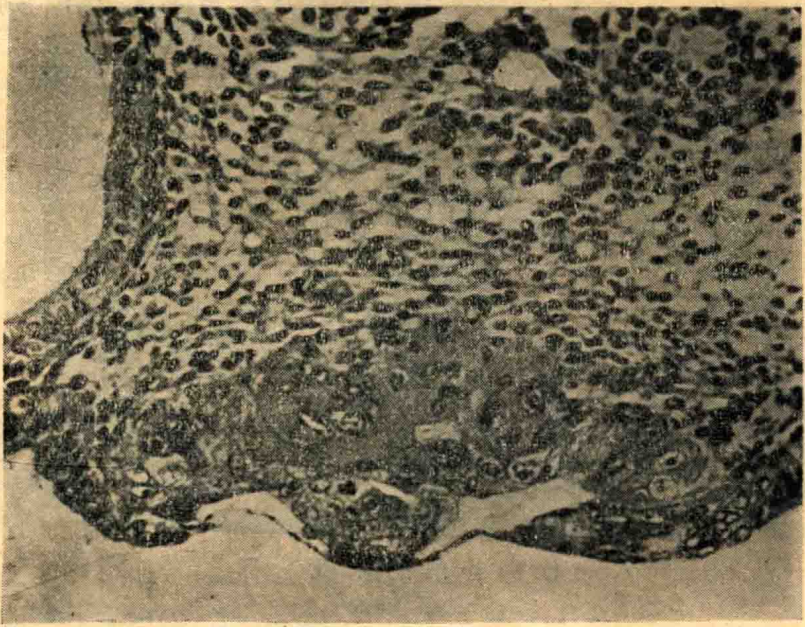


子宮粘膜上皮

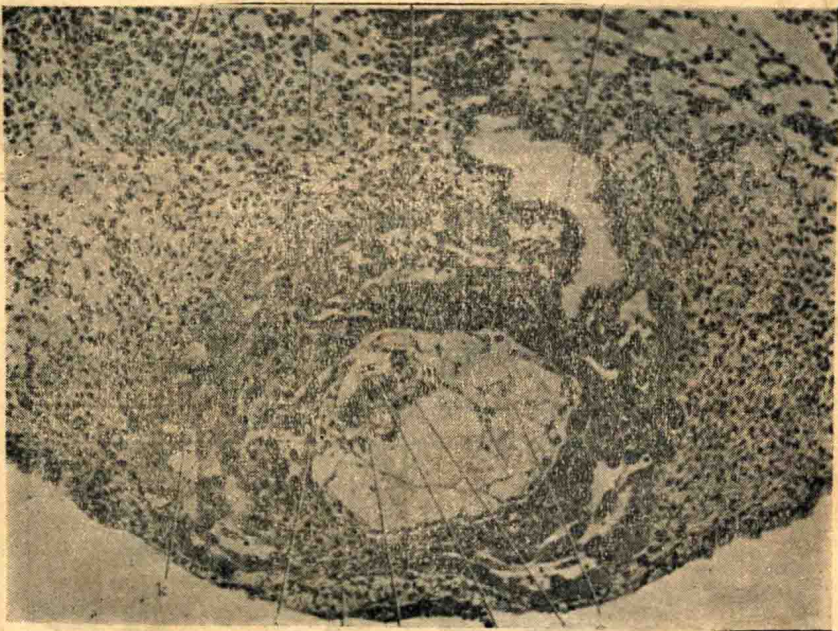
囊胚

人胚植入图解

滋养層里黑底加白點，子宮上皮白底加黑叉，子宮固有膜白底加黑點

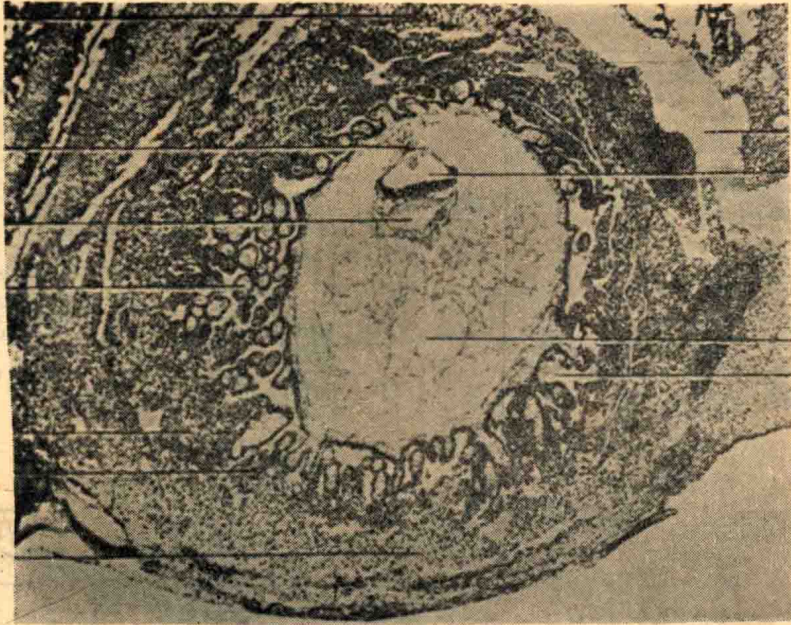


已植入的人胚剖面·7½天時期
 (子宮粘膜分泌营养)



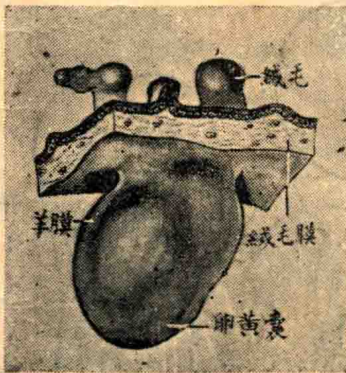
11天時期人胚剖面子宮分泌营养

... ..

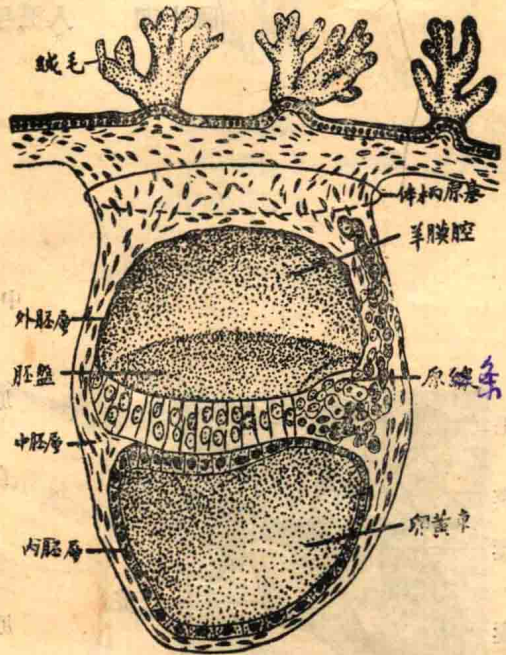


16 天人胚剖面

圖十三 人卵裂囊胚和原腸形成, 包括植入



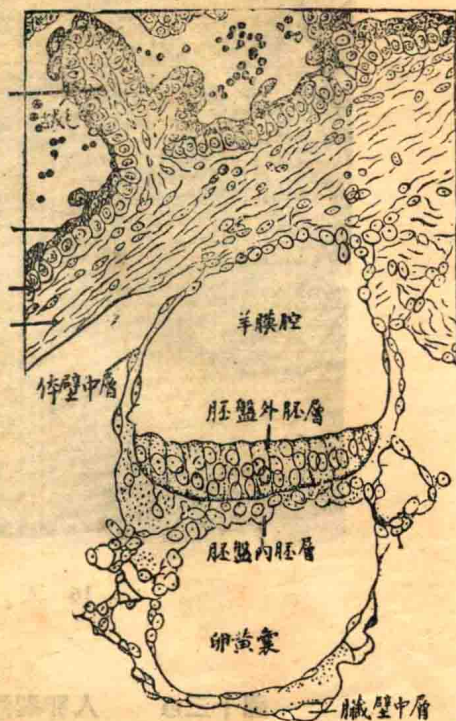
14天人胚除去大部絨毛膜
显示羊膜、卵黃囊和胚盤外形



14天人胚O建断面显示胚盤層和羊膜囊、
卵黃囊的壁和腔

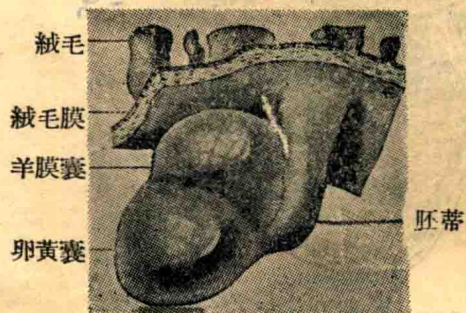


14日人胚前端橫断面

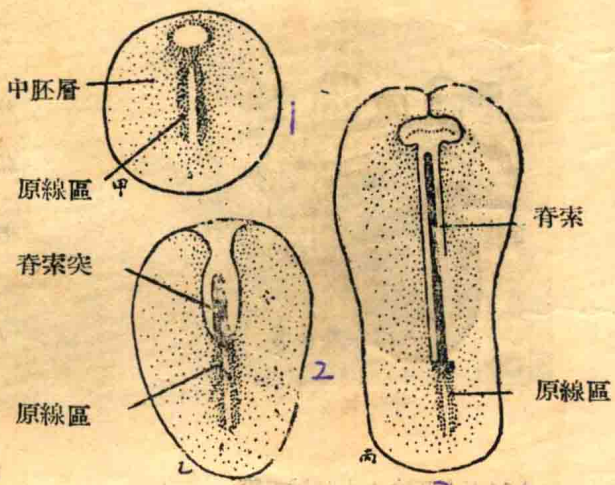


14天人胚后端原線區橫断面

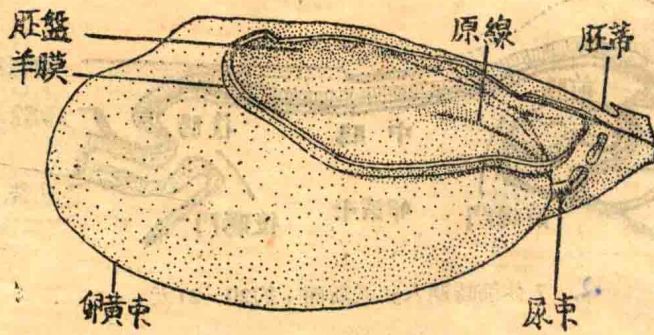
圖十四 人胚早期发育⑭十四天



16天人胚除去大部絨毛膜
显示胚膜外形及胚蒂

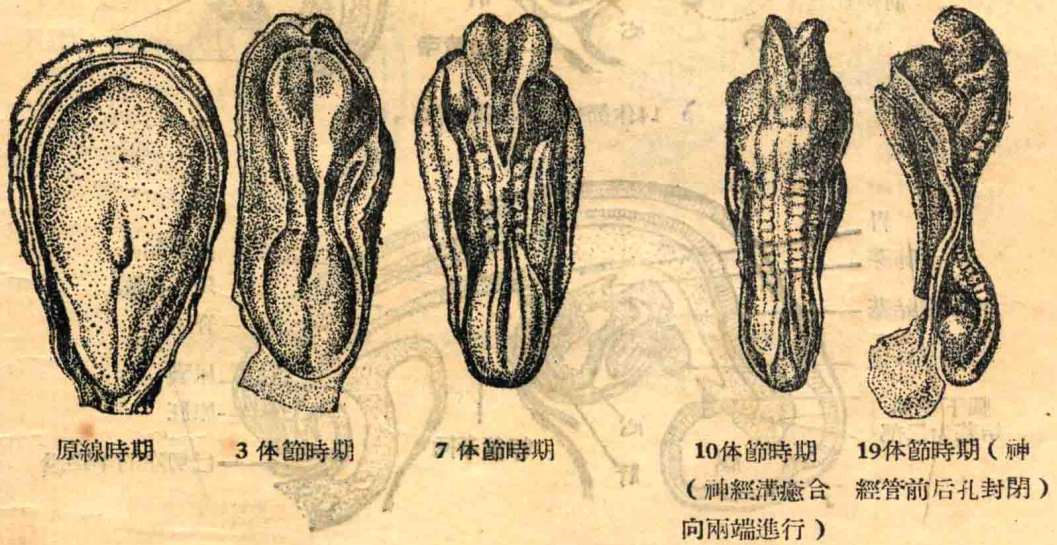


脊索與中胚層的發生

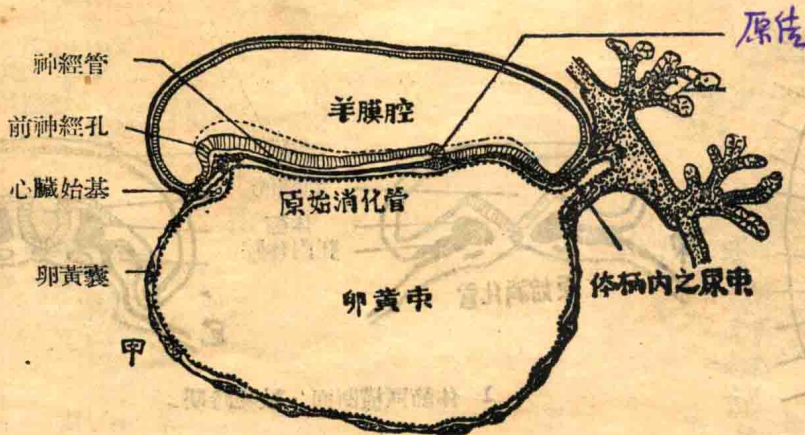


除去羊膜从背面看胚盤

圖十五 人胚早期发育16天



圖十六 切除羊膜囊的人胚,从背面看神經管的发育



20—21天人胚, 縱断面示体節開始形成