

Learning Town
幼儿英语主题系列教材

Shops in the Forest



北京汇佳教育科学研究院 编著

STUDENT'S BOOK

AGES 5-6



 北京语言大学出版社
BEIJING LANGUAGE AND CULTURE
UNIVERSITY PRESS

Learning Town
幼儿英语主题系列教材

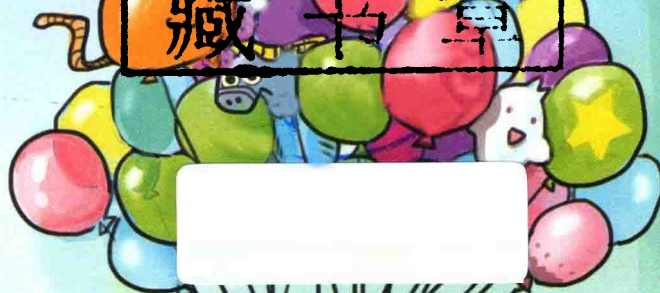
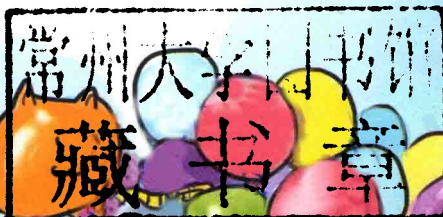
Shops in the Forest



北京汇佳教育科学研究院 编著

STUDENT'S BOOK
AGES 5-6

主编：黄晓琳 王 雁
审订：Adele Maree Kirkby-Clark 王丽朗



北京语言大学出版社
BEIJING LANGUAGE AND CULTURE
UNIVERSITY PRESS

图书在版编目(CIP)数据

汇佳Learning Town幼儿英语主题系列教材. Shops in the forest / 北京汇佳教育科学研究院编著. —北京: 北京语言大学出版社, 2013.8

ISBN 978-7-5619-3593-4

I. ①汇… II. ①北… III. ①英语课—学前教育—教学参考资料
IV. ①G613.2

中国版本图书馆CIP数据核字(2013)第179817号

书 名: Shops in the Forest (森林里的商店)
SENLIN LI DE SHANGDIAN

项目策划: 王 壮 王 雁

责任编辑: 胡学卉

美术编辑: 霍凌云 张 静

图书制作: 北京汇佳卡通影视制作有限公司

版式设计: 鑫联必升

责任印制: 陈 辉

出版发行: 北京语言大学出版社

社 址: 北京市海淀区学院路15号 邮政编码: 100083

网 址: www.blcup.com

电 话: 发行部 010-82303648/3591/3650

编辑部 010-82301019

读者服务部 010-82303653

网上订购电话 010-82303908

客户服务信箱 service@blcup.com

印 刷: 北京联兴盛业印刷有限公司

经 销: 全国新华书店

版 次: 2013年8月第1版 2013年8月第1次印刷

开 本: 889毫米×1194毫米 1/16 印张: 1.5

字 数: 3千字

书 号: ISBN 978-7-5619-3593-4/H·13170

定 价: 28.00元

凡有印装质量问题, 本社负责调换。电话: 010-82303590

CONTENTS



1 Story Time

2

2 Let's Chant

12

3 Let's Learn

14

4 Sing a Song

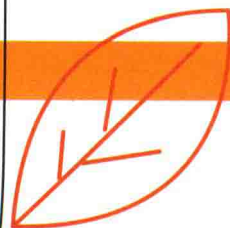
16

5 Play and Practice

18

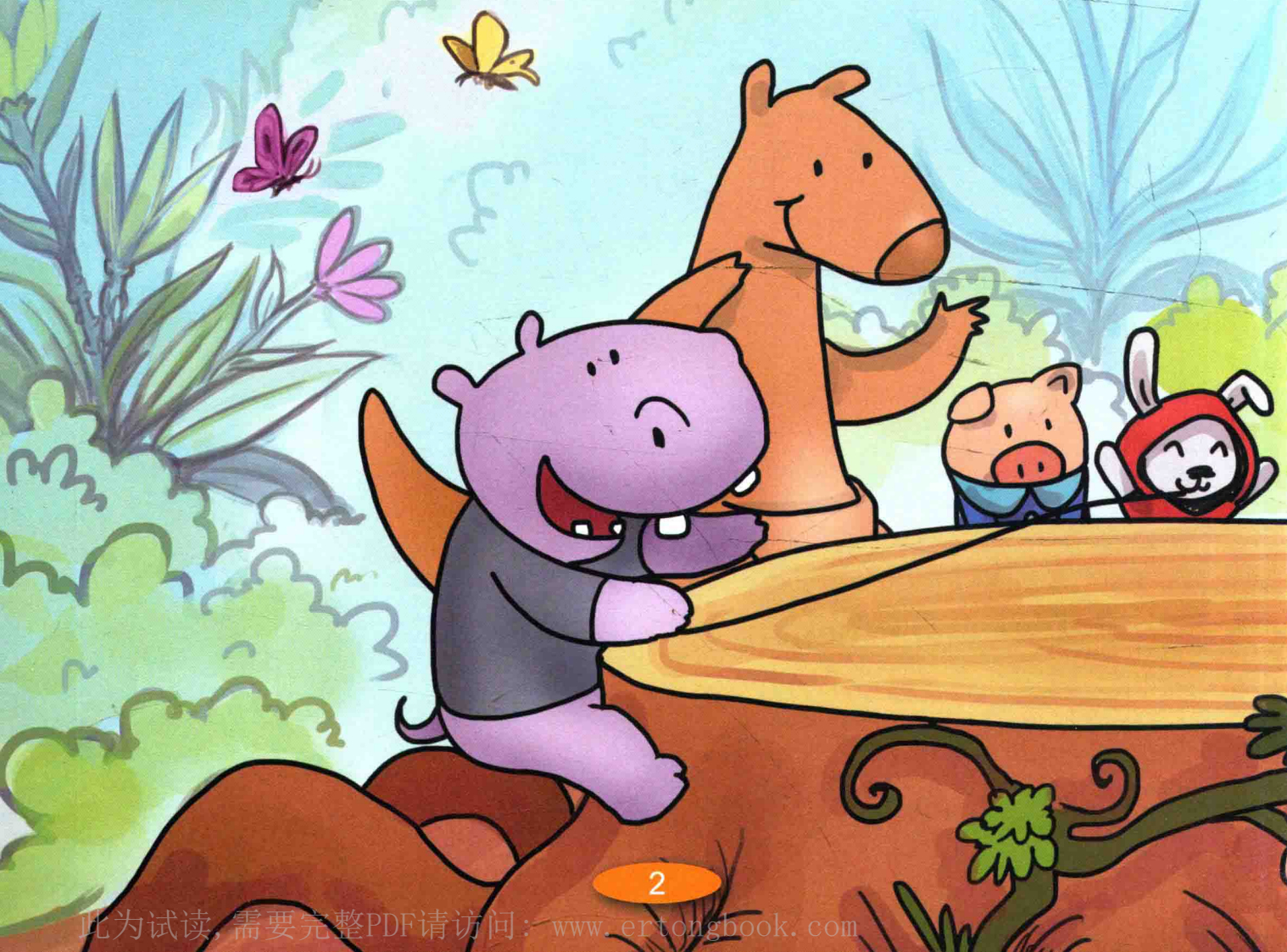
6 P-T-C-F

22



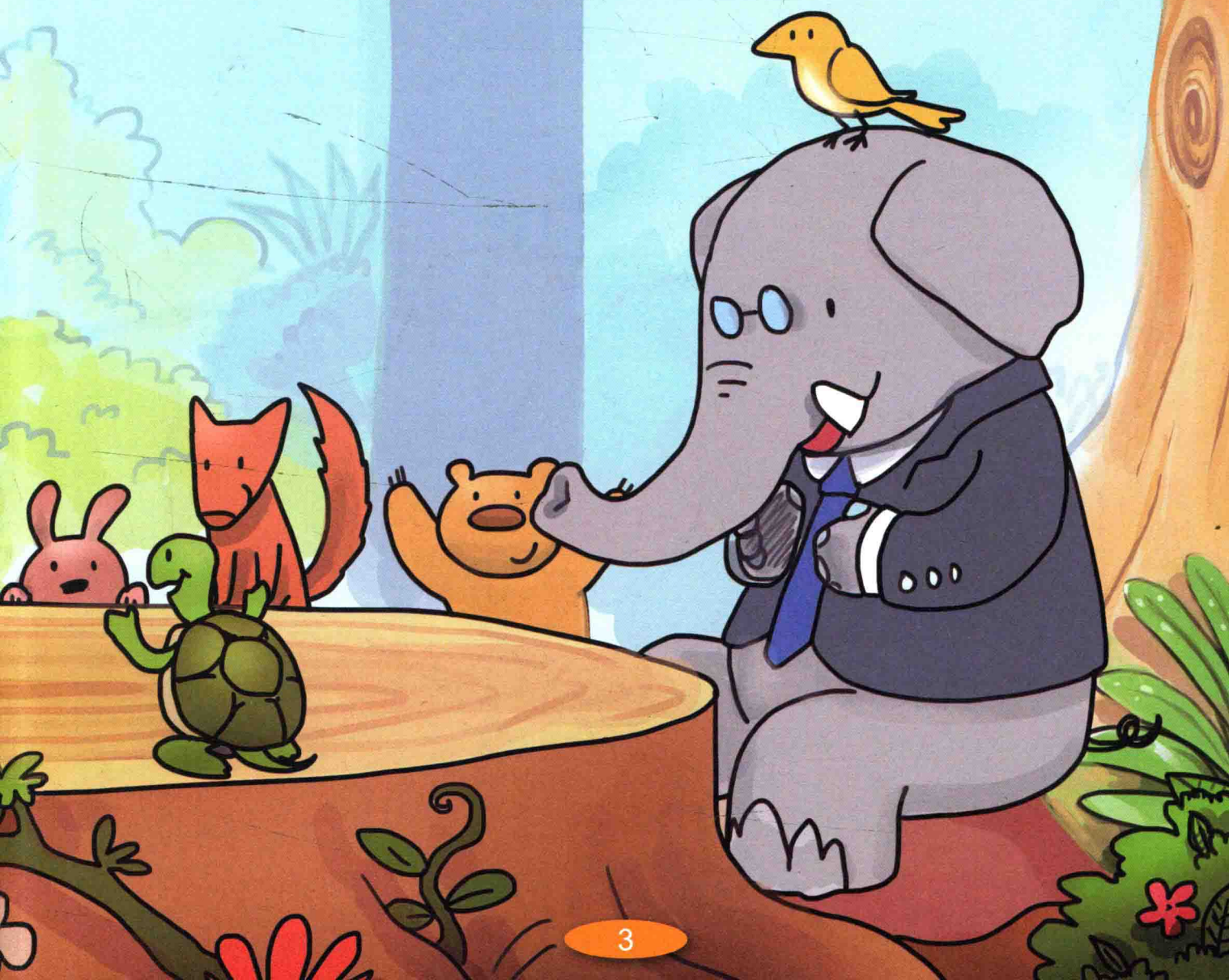


Shops in the Forest

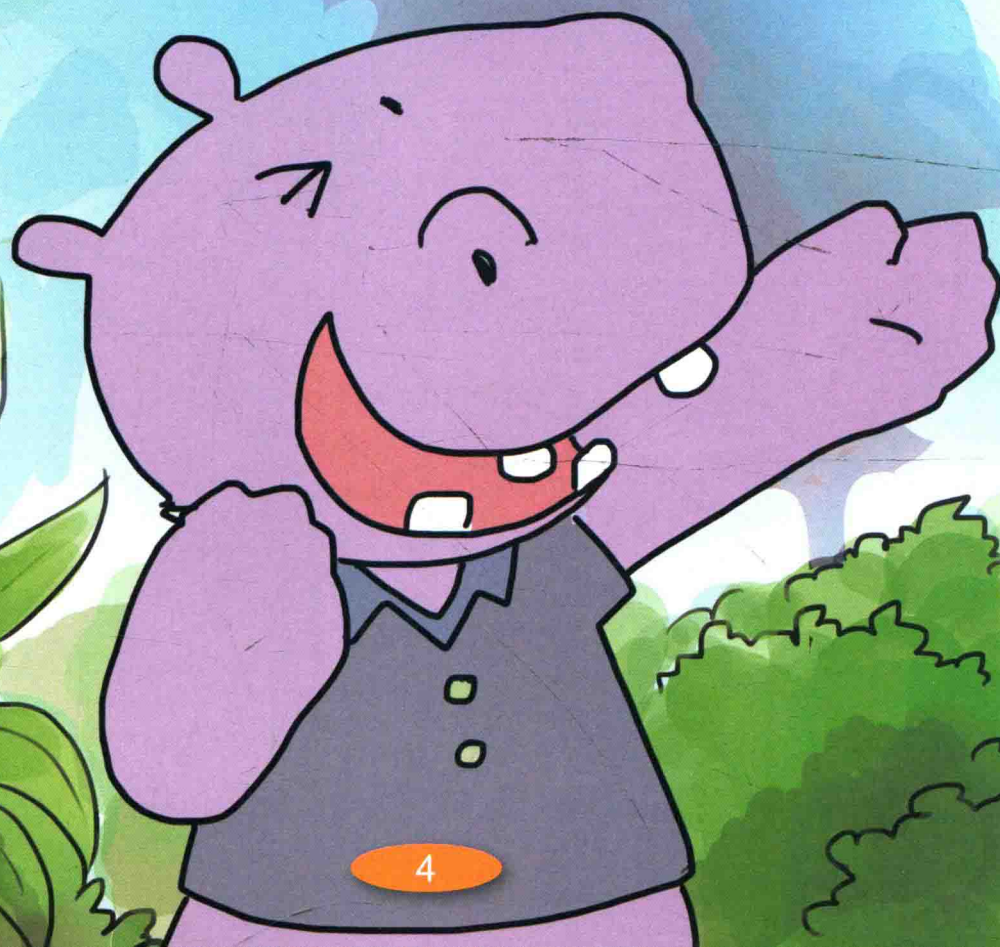


In the forest, there were many animals
that wanted to open shops.

“What shops are we going to open?”



Hippo said,
“I have a big mouth.
I can blow up balloons. I am going to open
a balloon shop.”

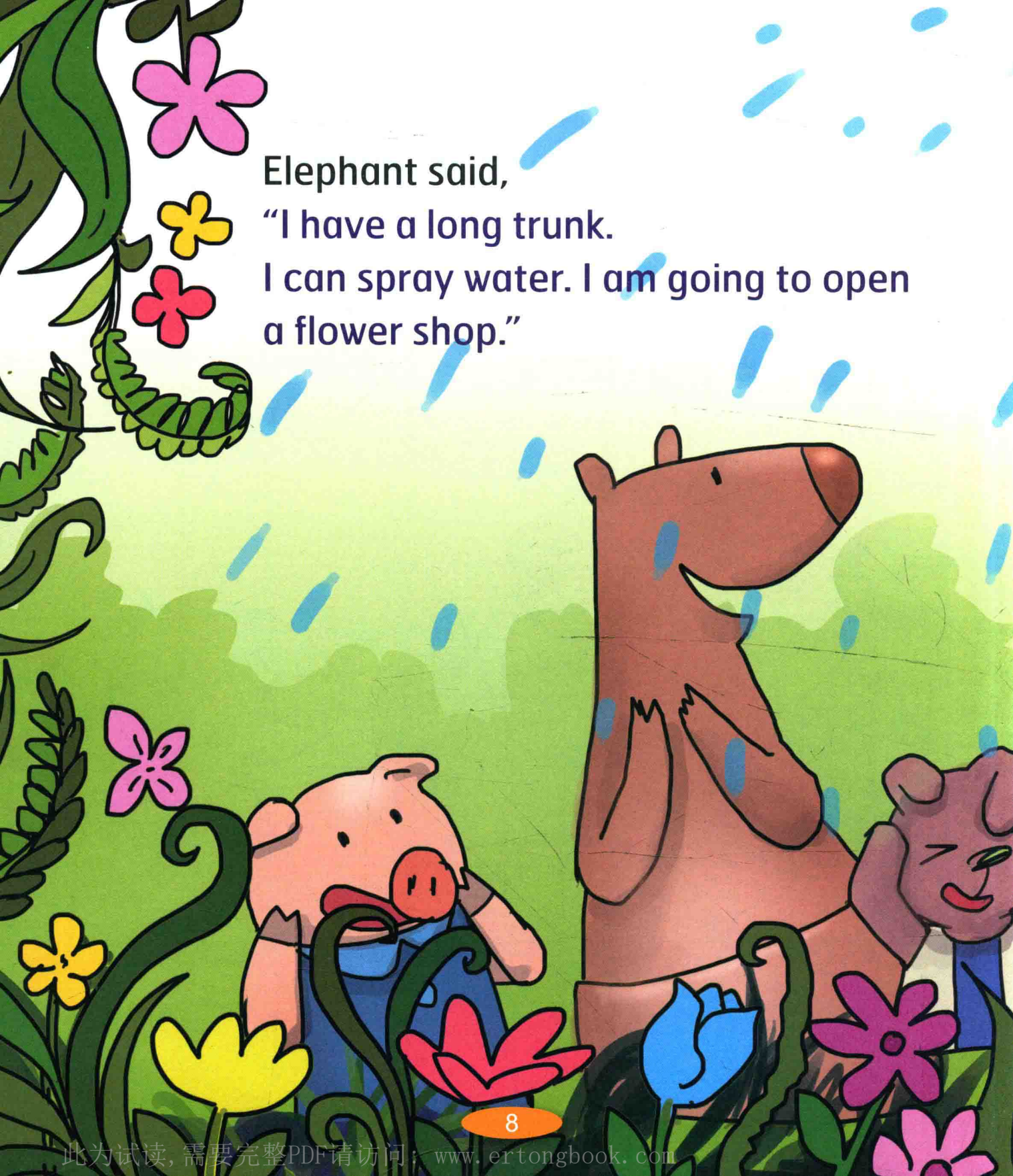






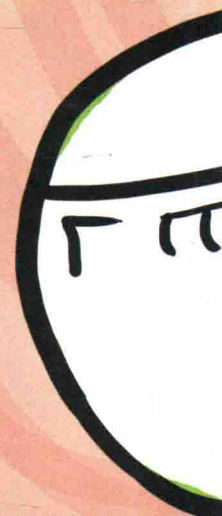
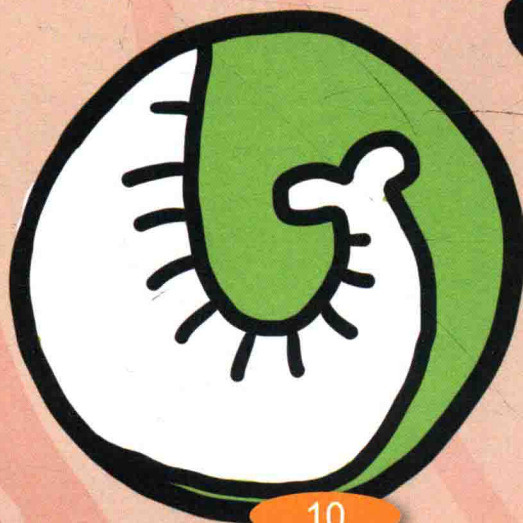
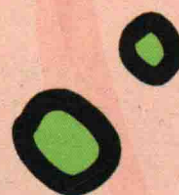
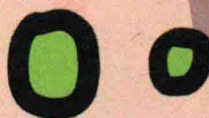
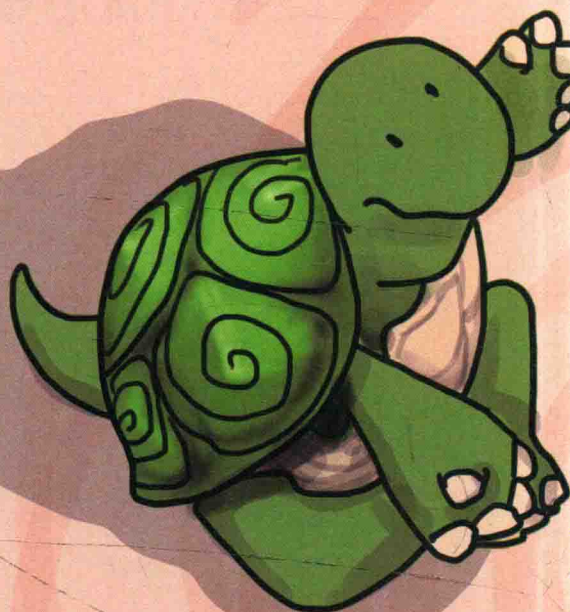
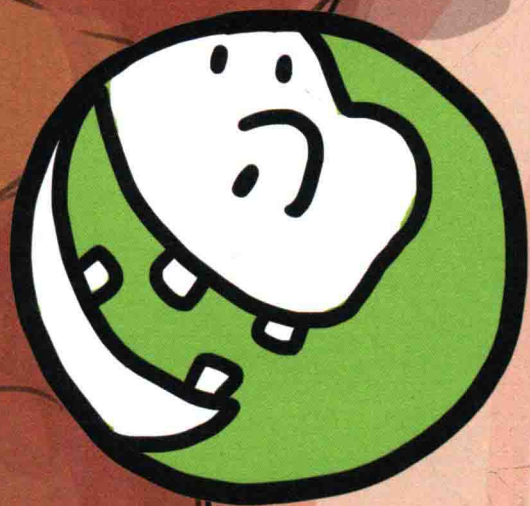
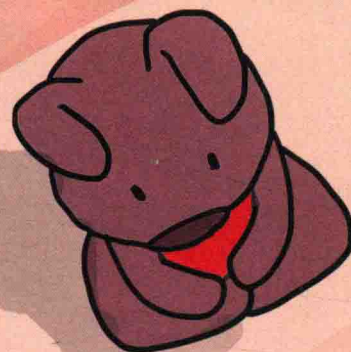
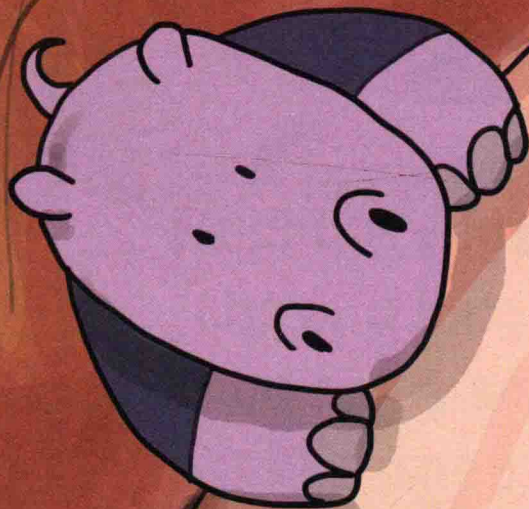
Kangaroo said,
“I have a big pouch.
My pouch is empty. I am going to open
a book shop.”



An illustration of an elephant spraying water in a garden. The elephant is brown and stands in the center-right, spraying a stream of water upwards. To its left, a pink pig and a brown bear are watching. The garden is filled with various flowers like pink, yellow, and red ones, and green foliage. Blue streaks represent water droplets falling from the elephant's trunk. The background is a soft green.

Elephant said,
"I have a long trunk.
I can spray water. I am going to open
a flower shop."

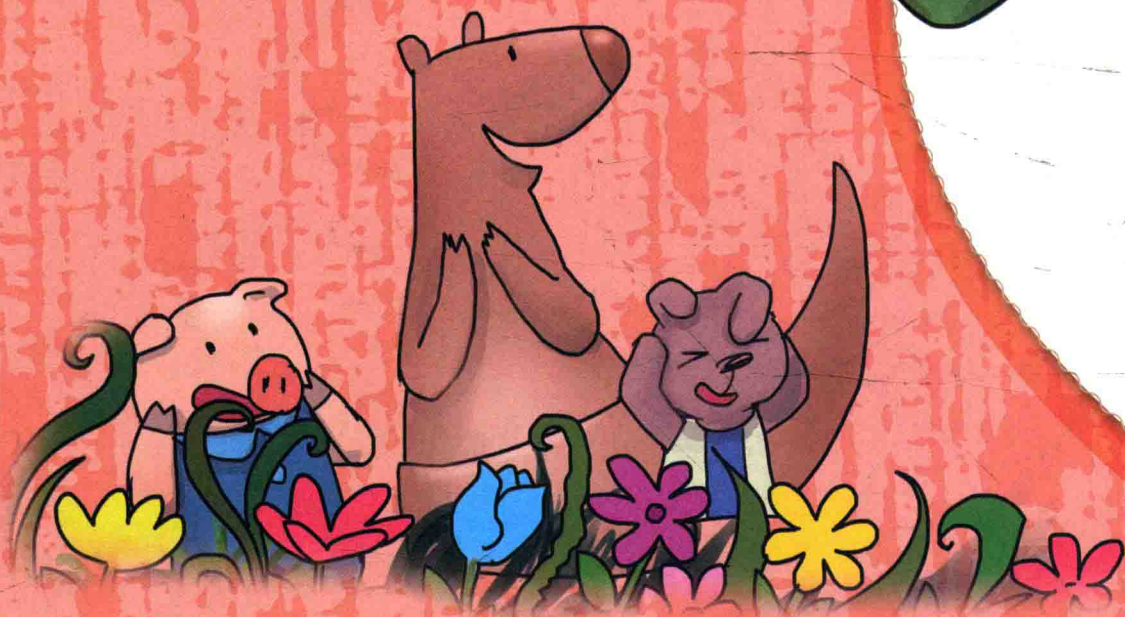
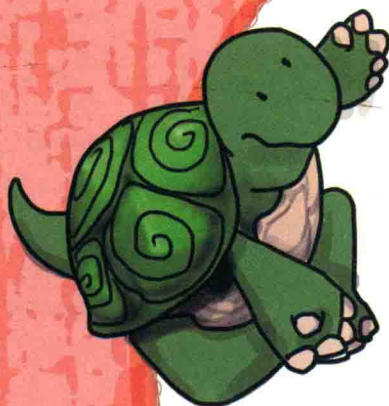


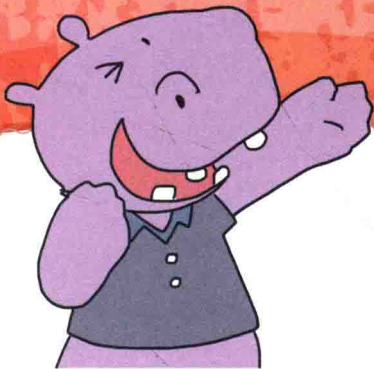


Turtle said,
“All I have is a heavy shell.
What shop am I going to open?”



W





What Do You Have?

I have a big mouth. What do you have?

I have a big pouch. What do you have?

I have a long trunk. What do you have?

I have a heavy shell. What do you have?





I am going to the *hospital*.

Where are you going?