

SZU 2000-2013 SELECTED WORKS

BY ARCHITECTURAL FACULTY
MEMBERS OF SHENZHEN UNIVERSITY

深圳大学教师建筑设计作品集

COLLEGE OF ARCHITECTURE & URBAN PLANNING OF SHENZHEN UNIVERSITY

深圳大学建筑与城市规划学院 编

中国建筑工业出版社
CHINA ARCHITECTURE & BUILDING PRESS

**SZU 2000-2013
SELECTED WORKS**
BY ARCHITECTURAL FACULTY
MEMBERS OF SHENZHEN UNIVERSITY

深圳大学教师建筑设计作品集

COLLEGE OF ARCHITECTURE & URBAN PLANNING OF SHENZHEN UNIVERSITY
深圳大学建筑与城市规划学院 编

中国建筑工业出版社
CHINA ARCHITECTURE & BUILDING PRESS

图书在版编目 (CIP) 数据

深圳大学教师建筑设计作品集 / 深圳大学建筑与城市规划学院 编. — 北京: 中国建筑工业出版社, 2013.8
ISBN 978-7-112-15666-5

I. ①深… II. ①深… III. ①建筑设计—作品集—中国—现代 IV. ①TU206

中国版本图书馆 CIP 数据核字 (2013) 第 169297 号

责任编辑: 孙立波 白玉美 率 琦
封面设计: 覃 力
版式设计: 吴 畏
责任校对: 张 颖 刘 钰

深圳大学教师建筑设计作品集

SELECTED WORKS BY ARCHITECTURAL FACULTY MEMBERS OF SHENZHEN UNIVERSITY

深圳大学建筑与城市规划学院 编

COLLEGE OF ARCHITECTURE & URBAN PLANNING OF SHENZHEN UNIVERSITY

中国建筑工业出版社出版、发行 (北京西郊百万庄)

各地新华书店、建筑书店经销

恒美印务 (广州) 有限公司印刷

开本: 787×1092 毫米 1/16 印张: 11 $\frac{1}{2}$ 字数: 300 千字

2013 年 8 月第一版 2013 年 8 月第一次印刷

定价: 150.00 元

ISBN 978-7-112-15666-5

(24195)

版权所有 翻印必究

如有印装质量问题, 可寄本社退换

(邮政编码 100037)

CONTENTS

目录

- | | | | |
|-----|--|-----|---|
| 12 | Fujian Industrial Bank Tower, Shenzhen City Center
深圳市中心区福建兴业银行大厦 | 104 | Chenjing Student Apartment
深圳大学晨景学生公寓 |
| 16 | SZU College of Architecture & Urban Planning
深圳大学建筑与城市规划学院院馆 | 106 | Art Gallery of Shenzhen University
深圳大学艺术村 |
| 20 | SZU Science & Technology Building
深圳大学科技楼 | 112 | The Galaxy Dante
星河丹堤 |
| 24 | Shenzhen Henggang City View
横岗城市中央花园 | 116 | Shenzhen Dongjiang Environmental Plaza
深圳东江环保大楼 |
| 28 | Yantian District Administration & Cultural Centre, Shenzhen
盐田区行政文化中心 | 120 | Nanchang Wanda Splendid Mansion
万达华府 |
| 32 | Kempinski Hotel, Shenzhen
深圳凯宾斯基酒店 | 124 | The Rebuilding of Activity Center for the Veteran Cadre, Shenzhen
老干部活动中心 |
| 36 | Library of Dongguan Institute of Technology
东莞理工学院松山湖图书馆 | 128 | Pingshan Gymnasium
坪山体育馆 |
| 40 | Shenzhen Experimental School (Primary)
深圳实验学校小学部 | 130 | Shenzhen North Railway Station
深圳北站 |
| 44 | Guangdong University of Foreign Studies Library
广东外语外贸大学图书馆 | 134 | The Art Museum Of Chinese Farmer
中国龙门农民画博物馆 |
| 46 | Zhongshan Vanke City Views Design
中山万科城市风景规划设计 | 138 | The twenty-sixth session of the Shenzhen Universiade athletes village
第26届世界大学生运动会运动员村(第三标段)建筑单体 |
| 50 | Shenzhen Mangrove West Coast
深圳红树西岸 | 142 | SZU South Campus Student's Apartments
深圳大学南区学生公寓 |
| 54 | Shenzhen BanXueGang Vanke City
深圳坂雪岗万科城 | 146 | Xi'an Qian Xi International Plaza
西安千禧国际广场 |
| 58 | Triumphal City • Jinhong
金泓凯旋城 | 148 | The Shenzhen Observatory
深圳天文台 |
| 62 | Shenzhen Vanke East Coast
深圳万科东海岸 | 150 | The Para Diso Of Vanke (Shunde)
佛山万科新城湾畔 |
| 66 | Comprehensive Teaching Building of Normal School of Shenzhen University
深圳大学师范学院综合教学楼 | 154 | Yinxin Park
银信中心 |
| 72 | The Library Continuation of Shenzhen University (Phase II)
深圳大学图书馆(二期) | 160 | Shenzhen SDG Information Building
特发信息港 |
| 78 | Shenzhen SED Science & Technology Building
深圳桑达科技大厦 | 162 | The Culture & Art Center of Longhua, Shenzhen
龙华文化艺术中心 |
| 80 | Hifuture Electric factory
惠程电气 | 166 | Shen Wai International School
深圳外国语学校国际部 |
| 86 | The Paradiso of Vanke (Phase III)
万科金域蓝湾(三期) | 170 | Science & Education Center, Guangxi Institute of Technology
广西工学院科教中心 |
| 90 | Valley in Hillside • China Overseas
中海•半山溪谷 | 172 | NH E-cool Phone (Phase II)
南海意库二期工程 |
| 94 | Zhong Hui Qin Lin - Merrill Court
中惠沁林山庄—美林苑 | 176 | Park View-CMPD
招商观园 |
| 98 | Yantai World Trade Center
烟台世贸中心 | 180 | The Front Gulf Garden
前海湾花园 |
| 102 | Futian Foreign Language School of Shenzhen (Jinglong Middle School)
深圳福田外国语学校(景龙中学) | 182 | Toledo Watertown, Tongling
铜陵托莱多 |



**SZU 2000-2013
SELECTED WORKS**
BY ARCHITECTURAL FACULTY
MEMBERS OF SHENZHEN UNIVERSITY

深圳大学教师建筑设计作品集

COLLEGE OF ARCHITECTURE & URBAN PLANNING OF SHENZHEN UNIVERSITY
深圳大学建筑与城市规划学院 编

中国建筑工业出版社
CHINA ARCHITECTURE & BUILDING PRESS

CONSULTANTS COMMITTEE

顾问委员会

MEMBERS: Yue Mincheng, Lu Xiaodi, Liang Hongwen, Xu Anzhi, Wu Jiahua

委员: 乐民成 卢小荻 梁鸿文 许安之 吴家骅

EDITORIAL COMMITTEE

编辑委员会

DIRECTOR: Qin Li

主任: 覃力

MEMBERS: Ai Zhigang, Gao Qing, Yang Wenyan, Rao Xiaojun, Gong Weimin

委员: 艾志刚 高青 杨文炎 饶小军 龚维敏



深圳大学校园中心 1985



深圳大学演会中心 1988



蛇口联合医院 1988

TEACHER'S DESIGN PRACTICES 教师们的设计实践

覃力 Qin Li

“实践是检验真理的标准”、“实践出真知”，这两句在过去一段时间里使用频率颇高的语汇，对于今天的建筑学来说，仍然是适用的。建筑教育原本就是“从实践中来，再到实践中去”的，因此，对于学校而言，理论与实践是同样重要的。当然，在实践方面每个学校都有自己的方法，教师们创作的优秀作品，也一直都是建筑创作大家庭中的重要一员。深圳大学建筑学院的教师们依托深圳特区，在设计实践方面也做出了一些尝试，此次编辑《深圳大学教师建筑设计作品集》，就是希望能够对这些尝试做个总结。

深圳大学建筑学专业创立于1983年，是“文革”后开办建筑学专业的新兴学校之一。创建之初，得到了清华大学的大力支持，清华大学著名学者汪坦教授亲自担任建筑系的第一任系主任。经过几代人的创业、努力和薪火相传，当年的小树如今已然枝繁叶茂，结出了丰硕的果实。

随着深圳特区和深圳大学的发展壮大，建筑学专业的教学规模也在逐渐地扩大，师资力量得到了充实，办学条件也有了较大的改善。从最初的十几名专业教师，发展到现在拥有数十名教授、专家学者的建筑与城市规划学院，整体实力和教学影响力都得到了拓展。目前，深圳大学的建筑学专业是“教育部特色专业建设点”、“广东省名牌专业”和“广东省重点学科”。

由于建筑学专业是个实践性很强的专业，有如医生需要临床看病，积累经验一样，理论和实践都是不可或缺的。而深圳大学又地处深圳特区，有着“务实、开拓和创新”的精神。所以，深圳大学建筑学专业在创立之时，就与深圳大学建筑设计研究院紧密结合，走上了一条相互支持、共同成长、共同发展的道路，并最终形成了“学研产一体化”的办学特色。在这一重视理论联系实际的办学思想指导之下，深圳大学建筑学专业的教师们在教学、科研之余，凭借学校这一实力雄厚的学术平台，参与了大量的建筑设计实践，为深圳特区及国内其他地区的城市建设做出了不小的贡献，同时也收获了许多宝贵经验，促进了教学和科研水平的进一步提高。

早期的设计实践多结合深圳大学的建设。当年的深圳大学正处在建设的起步阶段，为了早日建成校园，教师们都积极地投入到了自己学校的建设之中。从总体的校园规划到单体建筑，通过师生们的共同努力，设计建成

了很有特色的深圳大学校园建筑群。其中最有影响的“深圳大学校园中心广场设计（1985年）”曾获得全国教育建筑优秀设计二等奖、中国当代环境艺术设计优秀奖，“深圳大学演会中心”曾获得中国建筑学会建筑创作奖、建设部优秀勘察设计二等奖。当年的那些规划、设计理念，直到今天，对校园建筑仍然产生着重大的影响。

与此同时，深圳大学的教师们还积极地参与了深圳市的城市建设，与深圳市共同发展。1980年代，教师们先后设计了各种不同类型的建筑200余项。其中具有代表性的建筑有：“东江深圳供电局指挥大楼”、“蛇口联合医院”、“深圳市上步区人民医院”、“广发公司综合大厦”、“文华高层商住楼”、“中原油田展览馆”、“招商宾馆”、“深圳市小梅沙海滨旅游中心度假公寓”、“福田小学”、“上海金陵西路高层住宅”、“蛇口海湾花园”等等。

1990年代，深圳大学的教师们不仅更多地参与了深圳市的城市建设，承担了许多重大项目，而且，设计项目还扩展到了全国其他城市。“南山文体中心”、“南山人民医院”、“龙华汽车站”、“万德大厦”、“电影大厦”、“深港大厦”、“深圳大学元平体育馆”、“深圳外国语学校综合实验楼”、“深圳中学图书馆、科技楼”，以及1990年代后期建成的“安徽大厦”、“深南花园”、“翠海花园”、“南海电力大厦”、“广州中旅商业城”、“宁波新闻文化中心”、“深圳彩田村住宅小区”等等，都是当时设计上很有特色，而且具有一定影响力的项目。

1990年代，深圳大学教师们的很多设计作品不仅在深圳市和广东省内获得了好评，拿到许多奖项，一些作品还荣获了在全国具有一定影响力的奖项。例如：“蛇口中小学”就曾荣获首届“建筑师杯”全国中小型建筑优秀设计优秀奖，“深圳特区报业大厦”、“深圳市五洲宾馆”和“宁波文化中心”等，都曾获得了建设部的优秀勘察设计奖，“深圳万科四季花城”（第一期）曾获得过1999年度国家安居示范小区评比第一名。这些获奖作品，在社会上也都曾经引起了广泛的关注。

在重大国际赛事上，深圳大学的教师们也出手不凡，设计实力令人刮目相看。1998年，北京举办了第一次具有国际影响力的公开竞赛——“国家大剧院设计竞赛”。深圳大学的设计方案从50多个中外参赛方案中脱颖而出



深圳蛇口中小学综合楼 1990



广发公司综合大厦 1990



深圳南山文体中心 1991

出，获得公众最多选票，是进入第二轮的9家设计单位之一，也是唯一——一个没与外方合作的名不见经传的内地设计单位。

进入21世纪，随着学科建设力度的加强，教学、科研等整体实力得到了提升，深圳大学教师们的设计实践也与教学和科研结合得更加紧密，许多创作实践都带有一定的学术性和探索性，并在高层建筑、校园建筑、住宅建筑等方面形成了自己的特色和优势。

在高层建筑领域，深圳大学是国际“高层建筑与城市人居协会（CTBUH）”会员单位，教师们结合设计实践，编写出版了《高层办公综合建筑设计》、《日本高层建筑》、《日本高层建筑的发展趋向》、《高层超高层集合住宅》等多部专著、译著，设计了“福建兴业银行大厦”、“凯宾斯基酒店”、“银信中心”、“深圳昌盛大厦”、“深圳大学科技楼”、“烟台世贸中心酒店及办公楼”等高层、超高层建筑，目前正在设计的“宝能沈阳超高层综合体”更是高达518m。在这一领域中，形成了有一定影响力的高水平研究成果和实践作品。

校园建筑的规划设计是深圳大学教师们接触最多的建筑类型之一，近十余年来，已在原来基础上有了进一步的拓展，设计建成了一大批很有影响力的设计作品。例如：“深圳大学建筑与城市规划学院馆”、“深圳大学图书馆（二期）”、“深圳大学师范学院综合教学楼”、“东莞理工学院松山湖图书馆”、“广东外语外贸大学图书馆”、“上海松江大学城第五教学楼”、“深圳福田外国语学校”、“深圳外国语学校国际部”、“深圳市信息职业技术学院综合楼、宿舍楼”、“深圳大学南区学生公寓”、“广西工学院科教中心”、“深圳大学晨景学生公寓”等等。其中许多设计创作都带有一定的探索性和前瞻性，在地域气候影响策略、空间组织方式和创造个性化学习生活环境等方面都有所突破。2010年，“深圳大学建筑群”在众多教师多年的努力之下，被深圳市评选为深圳30年特区建区十大最有影响力的建筑之一。

在居住建筑方面，针对快速发展的城市化背景，深圳大学的教师们立足于深圳和珠三角地区，在亚热带地区居住建筑、后小康住宅、高密度住宅等领域取得了一系列理论研究和创作实践的成果。代表性作品有：“深圳高尔夫花园一期”、“深圳万科东海岸”、“横岗城市中央花园”、“深

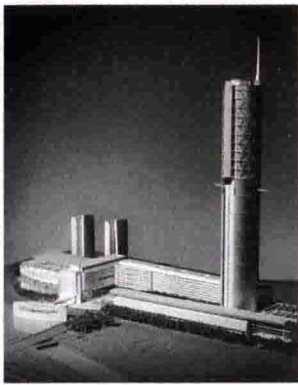
圳万科城”、“星河丹堤”、“中海·半山溪谷”、“中山万科城市风景”、“深圳金鸿凯旋城”、“佳兆业水岸新都”、“广西南宁普罗旺斯”、“河南鑫苑名家”、“南昌万达华府”等等。这些创作实践多是结合国家自然科学基金、建设部科技项目等科研课题展开的设计项目，获得了数十项国家及省部级奖项，在住宅规划设计领域具有相当的影响力和示范性意义。

借助大学这一有利条件，深圳大学的教师们还与境外著名的建筑设计事务所和研究机构进行过多种形式的联合协作。早在20世纪90年代初，就曾与SOM合作，设计了当时最高的88层的“深圳对外贸易中心”，并在国际竞赛中一举中标。近几年合作设计建成的项目有：“深圳百仕达红树西岸”、“深圳万科天琴湾”、“深圳万科金域蓝湾（三期）”等项目。通过这些合作，进一步加深了深圳大学与境外设计、研究机构的学术交流，形成了一种信息交流频繁的学术氛围。

经过教师们的努力，深圳大学建筑学科十余年来先后获得了国家和省部级优秀设计奖40余项，其中全国优秀工程设计铜奖1项，詹天佑大奖1项，詹天佑大奖住宅小区金奖4项，香港建筑师学会两岸四地建筑设计大奖银奖1项，建设部优秀工程二等奖1项、三等奖2项，全国优秀工程勘察设计行业二等奖2项、三等奖1项，中国建筑学会建筑创作佳作奖5项，广东省优秀工程勘察设计一等奖9项、二等奖8项、三等奖5项，广东省岭南特色建筑优秀设计银奖1项，广东省建筑创作优秀奖4项、佳作奖6项。

30年来，深圳大学的教师们通过“产学研一体化”的平台，以积极执着的态度，结合教学和科研创作出了大量的优秀建筑作品，许多作品都得到了同行的好评。此次编辑出版的《深圳大学教师建筑设计作品集》，主要是从2000年以后建成的项目中选出的部分代表性作品。这些作品虽然谈不上全面、完善，很多地方还有待改进，从全国范围内来看，也不过是沧海一粟，没什么值得夸耀的。但是，它却可以从一个侧面反映出深圳大学教师们的整体实力和学术追求。同时，也可以使我们看到“产学研一体化”机制在科研成果转化、设计创新能力提升和教学质量改进、以及理论联系实际等方面，始终发挥着重要的作用。

此书的编辑出版，正值深圳大学建校30周年，故以此书作为贺礼。



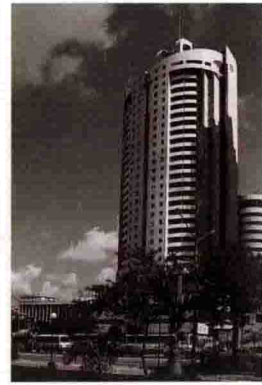
深圳对外贸易中心 1992



深圳大学元平体育馆 1994



文华大厦 1994



深圳深港大厦 1994

"Practice is the criterion for testing truth" and "Genuine knowledge comes from practice". These two phrases, often used in the past, still apply to the Architecture today. By its nature, architectural education is "from the practice, and to the practice", and as for schools, theory and practice are equally important. Admittedly, every school has its own approach in practice, and excellent works created by teachers are always important members of the broader family of architecture creation. Teachers from the School of Architecture and Urban Planning at Shenzhen University have made some attempts in design practice, applying their skills to projects based in the Shenzhen Special Economic Zone. We hope to summarize such efforts by editing the Selected Works by Architectural Faculty Members of Shenzhen University.

Established in 1983, Shenzhen University offered architectural programmes and became one of the emerging schools which set architecture major following the Cultural Revolution (1966-1976). The School received generous support from Tsinghua University. Professor Wang Tan, a famous scholar from Tsinghua, acted as the first Dean of Shenzhen University's Department of Architecture. Through the pioneering efforts of these teachers, and of those who followed, the previously small tree has become lush and bears rich fruits.

Along with development of the Shenzhen Special Economic Zone and Shenzhen University, the scope of the architectural programme has been gradually increasing, the faculty has been enriched, and school's facilities have remarkably improved as well. From a dozen professional teachers to dozens of professors, experts and scholars, the School of Architecture and Urban Planning has expanded both in capability and influence. At present, the architecture major of Shenzhen University has been recognised with various awards including Characteristic Major Ratified by Ministry of Education, Famous Major in Guangdong Province, and Key Subject in Guangdong Province.

Since the architecture course requires a very strong practical base, both theory and practice are indispensable, in the same way as that a doctor needs to accumulate experience by checking patients. Moreover, Shenzhen University is located in the Shenzhen Special Economic Zone which projects the spirit of "pragmatic, pioneering and innovative". Since establishment, the development of architecture major in Shenzhen University has integrated closely with Shenzhen University Institute of Architectural Design and Research(SUIADR), traveled a road of mutual support, mutual growth and mutual development, and eventually formed an alliance among practice, education and research. Guided by the school's administrative ideology of emphasizing integration of theory and practice, our teachers have participated in a plenty of architectural design projects that align with the school's academic platform. Involvement in these projects in their spare time, allows the teachers to contribute much expertise to the urban construction of Shenzhen and other areas. Meanwhile they have also gained much valuable experience and improved teaching and research levels at the University.

The early design projects were mostly related to construction of Shenzhen University. Shenzhen University at that time was just in the preliminary stage of construction, and all the teachers actively devoted themselves to the construction of their own school in order to build the campus as soon as possible. Through the mutual endeavor of teachers and students, from overall planning to individual building, the very distinctive architectural complexes of Shenzhen University campus were designed and built. The most influential of these designs, the Campus Planning of Shenzhen University (in 1985), was awarded the second prize of Excellent Designs of China Education Buildings, and also the excellence award of China for Contemporary Environmental Art Design. Shenzhen University Performance Center was awarded the Architectural Creation Prize by the Architectural Society of China, and the second prize in Excellent Survey and Design by the Ministry of Construction.



深圳市五洲宾馆 1997



深圳市特区报业大厦 1997



深圳海上油田指挥中心 1997

The concepts of planning and design have developed at that time are still significantly influencing campus building today.

In the meantime, teachers of Shenzhen University have actively participated in the urban construction of Shenzhen City, growing together with Shenzhen. In the 1980s, our teachers have designed more than 200 buildings of various types. These typical buildings include: East River Command Center of Shenzhen Power Supply Bureau, Shekou United Hospital, Shenzhen Shangbu People's Hospital, Complex of Guangfa Fund Management Co. Ltd., Wenhua High-Rise Commercial and Residential Building, Zhongyuan Oilfield Exhibition Center, Merchants Hotel, Holiday Apartments of Shenzhen Xiaomeisha Beach Resort, Futian Primary School, High-Rise Dwelling Houses on Shanghai's Jinlin West Road, Shekou Haiwan Garden, etc.

In the 1990s, the teachers of Shenzhen University were not only involved in many major projects in Shenzhen, but also engaged in projects in other cities of China. The characteristic and influential projects in this period include Nanshan Culture and Sports Center, Nanshan People's Hospital, Longhua Bus Station, Wande Mansion, Cinema Mansion, Shenzhen-Hong Kong Building, Yuanping Gymnasium of Shenzhen University, Experimental Complex of Shenzhen Foreign Language School, Library and Science Building of Shenzhen Middle School, as well as Anhui Mansion, Shennan Garden, Cuihai Garden, Nanhai Electric Power Mansion, Guangzhou CTS Commercial Center, Ningbo News and Culture Center, and Shenzhen Caitian Village Residential Quarter.

During this time, many design works of Shenzhen University's teachers were well praised in Shenzhen City and Guangdong Province, and even won many awards, some of which were influential throughout China. For example, Shekou Primary and Middle Schools won the excellent prize of the first Architect Trophy Excellent Design for All China Medium and Small-Scale Buildings; while Shenzhen Special Zone Press Tower, Shenzhen Wuzhou Guest

House and Ningbo Culture Center won the Excellent Survey and Design Prize conferred by the Ministry of Construction. Shenzhen Vanke Wonderland (Phase I) topped the list in the appraisal of Demonstrative Residential Quarters for the National Housing Project for Low-Income Families in 1999. All these awarded works have ever attracted wide public attention.

In major international contests, Shenzhen University's teachers have also performed well with striking design capabilities. In 1998, Beijing held the first open contest with great international influence—the Design Contest for China's National Grand Theatre. The design scheme from Shenzhen University stood out from more than 50 candidate schemes from China and abroad, and gained the most public ballots. Shenzhen University was one of the nine designers that qualified for the second round and the only domestic designer not partnering with foreign counterparts.

Into the 21st century, with more efforts put into building the architecture course, teaching and research capabilities have been enhanced. The design practices of teachers from Shenzhen University are more closely integrated with teaching and research; many creative design practices are somewhat academic and explorative, and Shenzhen University has formed its own distinctive expertise in high-rise buildings, campus buildings and residential buildings.

In the high-rise building sector, Shenzhen University is a member of the Council on Tall Buildings and Urban Habitat (CTBUH). Teachers, basing their work on design practice, have edited and published a number of monographs such as Design of Complex High-Rise Office Buildings, High-Rise Buildings in Japan, Developing Trends of High-Rise Buildings in Japan, and High-Rise and Super High-Rise Congregated Houses. High-rise and super high-rise buildings such as Fujian Industrial Bank Tower, Kempinski Hotel, Yinxin Center, Shenzhen Changsheng Mansion, SZU Science & Technology



深圳万德大厦 1997



国家大剧院 1998



深圳大学师范学院 1998

Building, and the Hotel and Office Building of Yantai World Trade Center were designed by our teachers. Another project, the Baoneng Super High-Rise Building Complex in Shenyang (currently in process) is up to 518 meters high. Shenzhen University has developed high-level research capabilities and achievements as well as significant practical work with certain influence in this sector.

The campus building is one building type most familiar to teachers of Shenzhen University. Its design has been further developed over the past decade or more, and many influential design works have been designed and built. Examples include SZU College of Architecture & Urban Planning, the Library Continuation of Shenzhen University (phase II), Comprehensive Teaching Building of Normal School of Shenzhen University, Library of Dongguan Institute of Technology, Guangdong University of Foreign Studies Library, the No. 5 Teaching Building of Shanghai Songjiang University Town, Shenzhen Futian Foreign Language School, Shen Wai International School, Complexes and Dormitory Buildings of Shenzhen Institute of Information Technology, SZU South Campus Students Apartments, Science & Education Center of Guangxi Institute of Technology, and Chenjing Student Apartment of Shenzhen University, etc. The creation of many of these designs is explorative and forward-looking, with innovative approaches to regional climate impact strategy, spatial organization and individualized learning and living environments. After years of efforts by numerous teachers, in 2010, the Architectural Complex of Shenzhen University was rated by Shenzhen City as one of top 10 most influential buildings in Shenzhen Special Economic Zone in 30 years.

With regard to residential projects, in response to rapid urbanization, Shenzhen University's teachers focus on Shenzhen and the Pearl River Delta, and have achieved a series of successful outcomes in theoretical research and design practice in such sectors as residential buildings in subtropical areas, luxury dwelling houses, high-density dwelling houses, and so on. These successes are seen in: Shenzhen

Golf Garden Phase I, Shenzhen Vanke East Coast, Shenzhen Henggang City View, Shenzhen Vanke City, the Galaxy Dante, Valley in Hillside, China Overseas, Zhongshan Vanke City Views, Shenzhen Jinhong Triumphant City, Kaisa Waterfront New Town, Provence Garden in Nanning of Guangxi, Xinyuan Garden in Henan, Wanda Splendid Mansion in Nanchang and so on. These projects were mostly carried out for research topics related to the National Natural Science Foundation, Science and Technology Projects supported by the former Ministry of Construction, etc. They have won dozens of national, provincial and ministerial awards, and continue to have considerable influence and exemplary significance in the dwelling house planning and design sector.

With such a favorable university environment, Shenzhen University's teachers have formed alliances and collaborated in various ways with famous foreign architectural design firms and research agencies. In the early 1990s, Shenzhen University even co-operated with American firm, Skidmore, Owings & Merrill LLP to design the 88-storey Shenzhen Foreign Trade Service Center, China's tallest building at that time, and won the bid in international competition with one attempt. The projects jointly designed and built in the past few years include Shenzhen Sinolink Mangrove West Coast, Shenzhen Vanke Tianqin Bay, and the Paradise of Vanke (Phase III), etc. Such co-operation further deepens the academic exchange between Shenzhen University and foreign design and research agencies, which results in an academic atmosphere characterized by frequent information exchange.

With teachers' efforts, the architecture course at Shenzhen University has won more than 40 national, provincial and ministerial excellent design awards in the past decade or more, including one bronze prize of All China Excellent Engineering Design; one Tien-yow Jeme Civil Engineering Prize; four gold prizes for residential quarter design of Tien-yow Jeme Civil Engineering Prize; one silver prize of Architectural Design Grand Prize for Mainland China, Hong



深圳万科四季花城 1999



广州中旅商城 1999



南海电力大厦 1999

Kong, Macau and Taiwan by the Hong Kong Institute of Architects; one second prize and two third prizes of Excellent Project by the former Ministry of Construction; two second prizes and one third prize of Excellent Engineering Survey and Design Industry in China; five Good Work Prizes of Architectural Creation by the Architectural Society of China; nine first prizes, eight second prizes and five third prizes of Excellent Engineering Survey and Design in Guangdong Province; one silver prize of Excellent Design of Lingnan-Style Buildings in Guangdong Province; four excellence awards and six Good Work Prizes of Guangdong Architectural Creation.

Over three decades since its establishment in 1983, the architecture teachers from Shenzhen University, with proactive and committed attitude, have created a great number of excellent architectural design works through the platform of alliance among practice, education and research; many of their works have been well praised by their peers. The Selected Works by Architectural Faculty Members of Shenzhen University, edited and published at this time, consists mainly of selective built projects since 2000. These works are not all-inclusive and complete, and many chapters are to be improved. When compared with many other projects throughout China, they are simply trivial and not worth bragging about. However, they do reflect the overall capability and academic pursuits of Shenzhen University's teachers. Meanwhile, they also show that the mechanism of an alliance among practice, education and research has continued to play its important role in research, design innovation, teaching quality improvement, and integration between theory and practice.

This book was edited and published to mark the occasion of the 30th anniversary of Shenzhen University, and so we would like to present it as a congratulatory gift at this event.

CONTENTS

目录

- | | | | |
|-----|--|-----|---|
| 12 | Fujian Industrial Bank Tower, Shenzhen City Center
深圳市中心区福建兴业银行大厦 | 104 | Chenjing Student Apartment
深圳大学晨景学生公寓 |
| 16 | SZU College of Architecture & Urban Planning
深圳大学建筑与城市规划学院院馆 | 106 | Art Gallery of Shenzhen University
深圳大学艺术村 |
| 20 | SZU Science & Technology Building
深圳大学科技楼 | 112 | The Galaxy Dante
星河丹堤 |
| 24 | Shenzhen Henggang City View
横岗城市中央花园 | 116 | Shenzhen Dongjiang Environmental Plaza
深圳东江环保大楼 |
| 28 | Yantian District Administration & Cultural Centre, Shenzhen
盐田区行政文化中心 | 120 | Nanchang Wanda Splendid Mansion
万达华府 |
| 32 | Kempinski Hotel, Shenzhen
深圳凯宾斯基酒店 | 124 | The Rebuilding of Activity Center for the Veteran Cadre, Shenzhen
老干部活动中心 |
| 36 | Library of Dongguan Institute of Technology
东莞理工学院松山湖图书馆 | 128 | Pingshan Gymnasium
坪山体育馆 |
| 40 | Shenzhen Experimental School (Primary)
深圳实验学校小学部 | 130 | Shenzhen North Railway Station
深圳北站 |
| 44 | Guangdong University of Foreign Studies Library
广东外语外贸大学图书馆 | 134 | The Art Museum Of Chinese Farmer
中国龙门农民画博物馆 |
| 46 | Zhongshan Vanke City Views Design
中山万科城市风景规划设计 | 138 | The twenty-sixth session of the Shenzhen Universiade athletes village
第26届世界大学生运动会运动员村(第三标段)建筑单体 |
| 50 | Shenzhen Mangrove West Coast
深圳红树西岸 | 142 | SZU South Campus Student's Apartments
深圳大学南区学生公寓 |
| 54 | Shenzhen BanXueGang Vanke City
深圳坂雪岗万科城 | 146 | Xi'an Qian Xi International Plaza
西安千禧国际广场 |
| 58 | Triumphal City • Jinhong
金泓凯旋城 | 148 | The Shenzhen Observatory
深圳天文台 |
| 62 | Shenzhen Vanke East Coast
深圳万科东海岸 | 150 | The Para Diso Of Vanke (Shunde)
佛山万科新城湾畔 |
| 66 | Comprehensive Teaching Building of Normal School of Shenzhen University
深圳大学师范学院综合教学楼 | 154 | Yinxin Park
银信中心 |
| 72 | The Library Continuation of Shenzhen University (Phase II)
深圳大学图书馆(二期) | 160 | Shenzhen SDG Information Building
特发信息港 |
| 78 | Shenzhen SED Science & Technology Building
深圳桑达科技大厦 | 162 | The Culture & Art Center of Longhua, Shenzhen
龙华文化艺术中心 |
| 80 | Hifuture Electric factory
惠程电气 | 166 | Shen Wai International School
深圳外国语学校国际部 |
| 86 | The Paradiso of Vanke (Phase III)
万科金域蓝湾(三期) | 170 | Science & Education Center, Guangxi Institute of Technology
广西工学院科教中心 |
| 90 | Valley in Hillside • China Overseas
中海•半山溪谷 | 172 | NH E-cool Phone (Phase II)
南海意库二期工程 |
| 94 | Zhong Hui Qin Lin - Merrill Court
中惠沁林山庄—美林苑 | 176 | Park View-CMPD
招商观园 |
| 98 | Yantai World Trade Center
烟台世贸中心 | 180 | The Front Gulf Garden
前海湾花园 |
| 102 | Futian Foreign Language School of Shenzhen (Jinglong Middle School)
深圳福田外国语学校(景龙中学) | 182 | Toledo Watertown, Tongling
铜陵托莱多 |

Fujian Industrial Bank Tower, Shenzhen City Center

深圳市中心区福建兴业银行大厦

建设单位：正先投资有限公司

项目地址：深圳市中心区 CBD23-1 地块

项目负责人：陈佳伟

设计团队：陈佳伟、马航

设计时间：2001 年

竣工时间：2003 年

建筑面积：43963 m²

Client: Zhengxian Investment Co. Ltd.

Location: Futian CBD, Shenzhen

Principle: Chen Jiawei

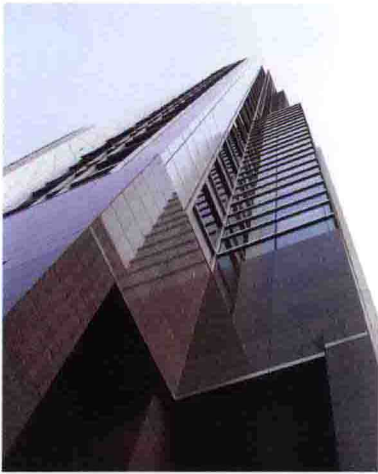
Team Members: Chen Jiawei, Ma Hang

Design Period: 2001

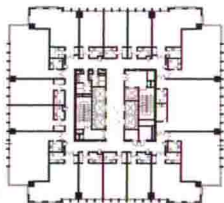
Completion: 2003

Gross Floor Area: 43963 m²

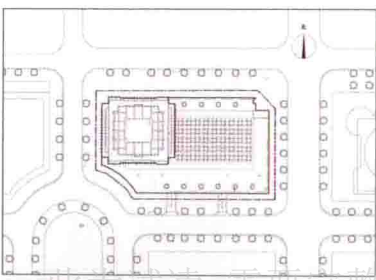




标准层平面



四至九层平面



总平面图

