

單声部視唱練習

馬革順編著



音樂出版社

一九五七年·北京

单声部视唱练习

（上册）



人民音乐出版社

（北京）

單声部視唱練習

馬革順編著

單聲部視唱練習

編 著 者 馬 革 順

*

開本:850×1168 耗 1/32

頁數:70 印張:4 3/8 樂譜:136面

1957年5月北京第1版 1957年5月北京第1次印刷

印數:1—2,950册

北京市書刊出版業營業許可証出字第〇六三號

音樂出版社出版

北京東單溝沿頭三三號

新華書店總經售

*

統一書號:8028·618 定價0.90元

說 明

本書學習對象以师范学院音乐系科学生为主，其他學習音乐的同志們或職業及業余的文工團員們如欲掌握一般讀譜能力而自行學習或有專人輔導，本書將有一定的幫助。如每周學習二小時，本書可供兩學期之用（每學期以十六周計算，每周平均有九條練習）。但在本書練習進行相當時間后，可選其他二聲部、多聲部或附歌詞之旋律等練習，同時相輔進行。

本書一切練習，只限常用的高音及低音部譜表。材料由淺入深，由易而難，新的內容，逐步加入，在每次進入新的要求時，便在其他方面稍行簡化，以便易于掌握。一切新的要求，不予注明，使學者于不知不覺間進入新的階段。

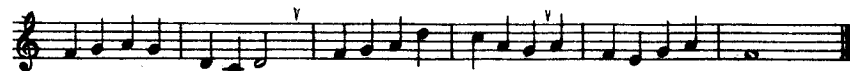
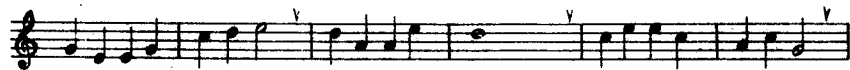
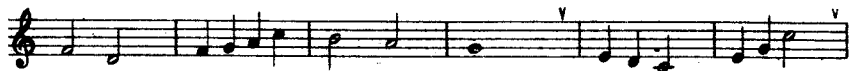
本書將各同名半音的調（如G大調與^bG大調或C小調與[#]C小調所用的調號，兩調中調号升降記号的总和等于七）都放在一處，因同名半音的調，在讀譜与感覺上及音与音的相互关系上（相对的）都是一樣；只要注意其中的臨時變記号便可，如此可節省學習的時間。

在學習本書以先，應先掌握一般讀譜的基本知識。

為了熟悉民族風格，本書除創作一部分練習外，并選有部份民歌。凡選編旋律，均注有“××民歌”等字樣。

馬革順

"V" 表示换气处所



First musical staff with treble clef, 4/4 time signature, and a key signature of one flat. It contains a sequence of notes: G4, A4, B4, C5, B4, A4, G4, F4, E4, D4, C4, B3, A3, G3. There are accents (v) above the notes G4, B4, and C5.

5

Second musical staff, starting with a tempo marking of quarter note = 116. It contains notes: G4, A4, B4, C5, B4, A4, G4, F4, E4, D4, C4, B3, A3, G3. Accents (v) are above the notes G4, B4, and C5.

Third musical staff with notes: G4, A4, B4, C5, B4, A4, G4, F4, E4, D4, C4, B3, A3, G3. Accents (v) are above the notes G4, B4, and C5.

Fourth musical staff with notes: G4, A4, B4, C5, B4, A4, G4, F4, E4, D4, C4, B3, A3, G3. Accents (v) are above the notes G4, B4, and C5.

6

Fifth musical staff, starting with a tempo marking of quarter note = 116. It contains notes: G4, A4, B4, C5, B4, A4, G4, F4, E4, D4, C4, B3, A3, G3. Accents (v) are above the notes G4, B4, and C5.

Sixth musical staff with notes: G4, A4, B4, C5, B4, A4, G4, F4, E4, D4, C4, B3, A3, G3. Accents (v) are above the notes G4, B4, and C5.

Seventh musical staff with notes: G4, A4, B4, C5, B4, A4, G4, F4, E4, D4, C4, B3, A3, G3. Accents (v) are above the notes G4, B4, and C5.

7

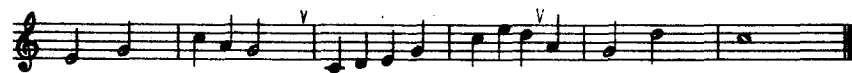
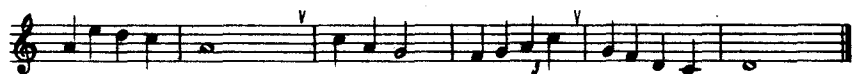
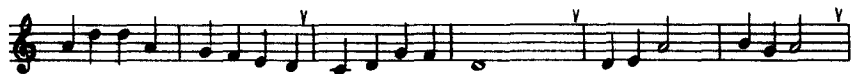
Eighth musical staff, starting with a tempo marking of quarter note = 108. It contains notes: G4, A4, B4, C5, B4, A4, G4, F4, E4, D4, C4, B3, A3, G3. Accents (v) are above the notes G4, B4, and C5.

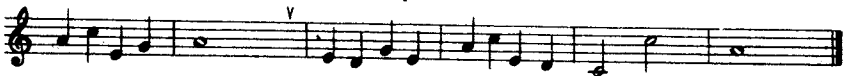
Ninth musical staff with notes: G4, A4, B4, C5, B4, A4, G4, F4, E4, D4, C4, B3, A3, G3. Accents (v) are above the notes G4, B4, and C5.

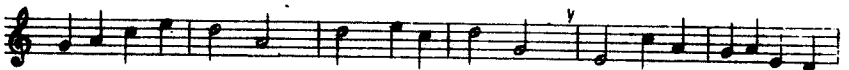
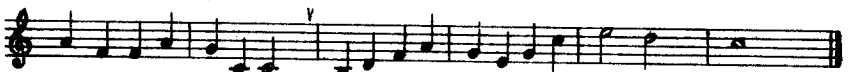
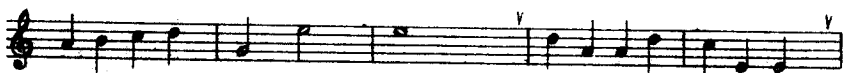
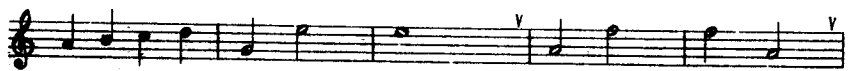
Tenth musical staff with notes: G4, A4, B4, C5, B4, A4, G4, F4, E4, D4, C4, B3, A3, G3. Accents (v) are above the notes G4, B4, and C5.

8

Eleventh musical staff, starting with a tempo marking of quarter note = 108. It contains notes: G4, A4, B4, C5, B4, A4, G4, F4, E4, D4, C4, B3, A3, G3. Accents (v) are above the notes G4, B4, and C5.







17

18 $\text{♩} = 116$

19 $\text{♩} = 100$

A musical score for a single melodic line, consisting of 11 staves of music. The notation is in treble clef with a key signature of one flat (B-flat). The music features a variety of rhythmic patterns, including quarter notes, eighth notes, and sixteenth notes, often grouped with slurs and accents. The score includes several dynamic markings, such as accents (v) and a *fine* marking. A tempo marking of $J = 120$ is present above the 20th measure. The piece concludes with a *D.S.* (Da Capo) instruction.

20 $J = 120$

fine

D.S.

21 $J = 104$



Musical staff 21, first line. Treble clef, 3/4 time signature. Tempo marking $J = 104$. The staff contains a melodic line starting with a quarter rest, followed by eighth and quarter notes. A fermata is placed over the first measure. A dynamic marking *mf* is present. The line ends with a fermata over a quarter note.



Musical staff 21, second line. Continuation of the melodic line from the first line. A dynamic marking *f* is present. The line ends with a fermata over a quarter note.



Musical staff 21, third line. Continuation of the melodic line. A dynamic marking *f* is present. The line ends with a fermata over a quarter note.



Musical staff 21, fourth line. Continuation of the melodic line. A dynamic marking *f* is present. The line ends with a fermata over a quarter note. The marking *D.S.* is written at the end of the staff.

22 $J = 112$



Musical staff 22, first line. Treble clef, 3/4 time signature. Tempo marking $J = 112$. The staff contains a melodic line starting with a quarter rest, followed by eighth and quarter notes. A dynamic marking *mf* is present. The line ends with a fermata over a quarter note.



Musical staff 22, second line. Continuation of the melodic line. A dynamic marking *f* is present. The line ends with a fermata over a quarter note.



Musical staff 22, third line. Continuation of the melodic line. A dynamic marking *f* is present. The line ends with a fermata over a quarter note.



Musical staff 22, fourth line. Continuation of the melodic line. A dynamic marking *f* is present. The line ends with a fermata over a quarter note.

23 $J = 112$



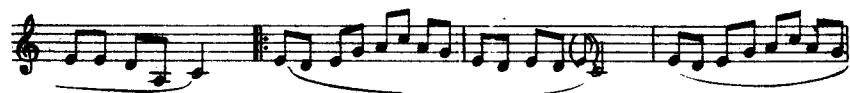
Musical staff 23, first line. Treble clef, 3/4 time signature. Tempo marking $J = 112$. The staff contains a melodic line starting with a quarter rest, followed by eighth and quarter notes. A dynamic marking *mf* is present. The line ends with a fermata over a quarter note.

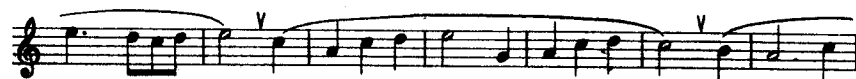


Musical staff 23, second line. Continuation of the melodic line. A dynamic marking *f* is present. The line ends with a fermata over a quarter note.



Musical staff 23, third line. Continuation of the melodic line. A dynamic marking *f* is present. The line ends with a fermata over a quarter note.





苏北民歌《四季相思》



♩ = 100

30

1.

2.

Presto ♩ = 186

31

Presto ♩ = 186

32