

灵山·圣水

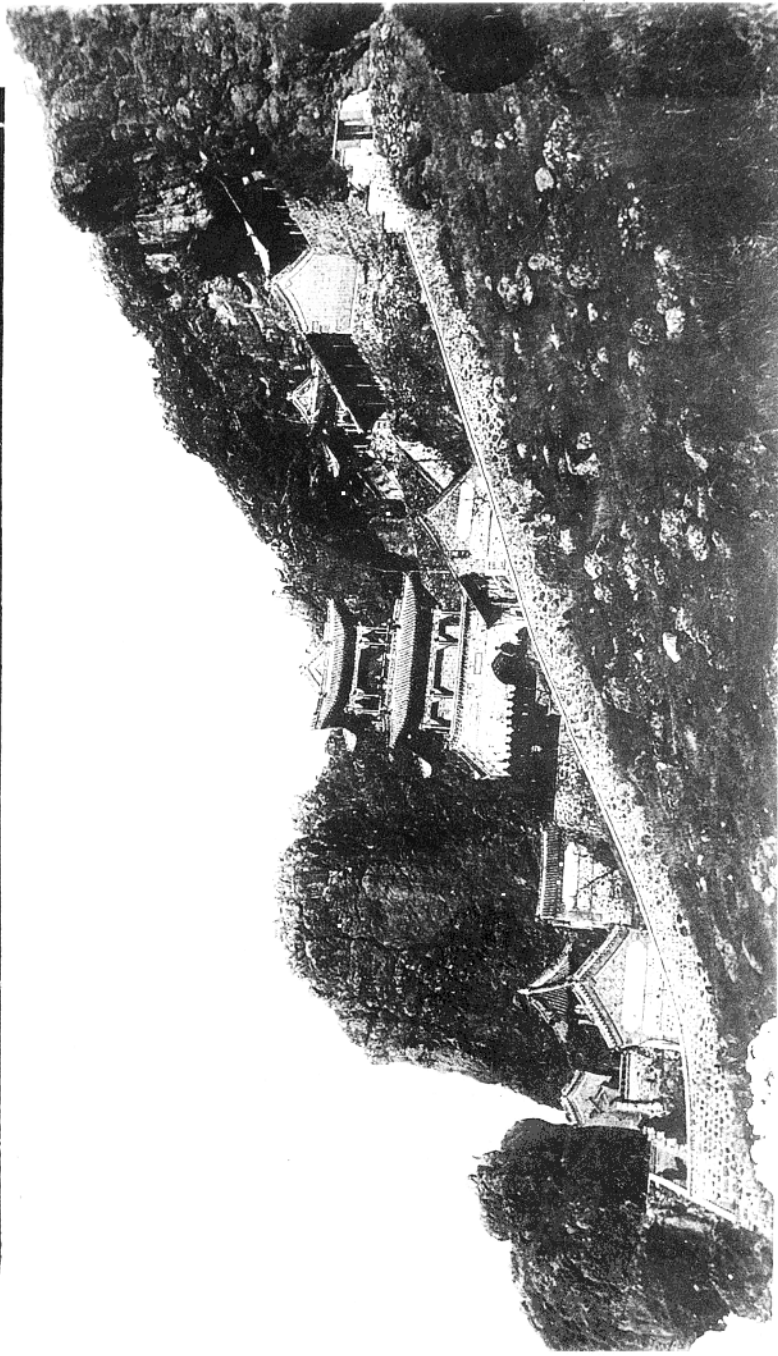
SPIRITUAL MOUNTAIN · SACRED WATER

张助群 主编

Editor in chief: Zhang zhuqun.

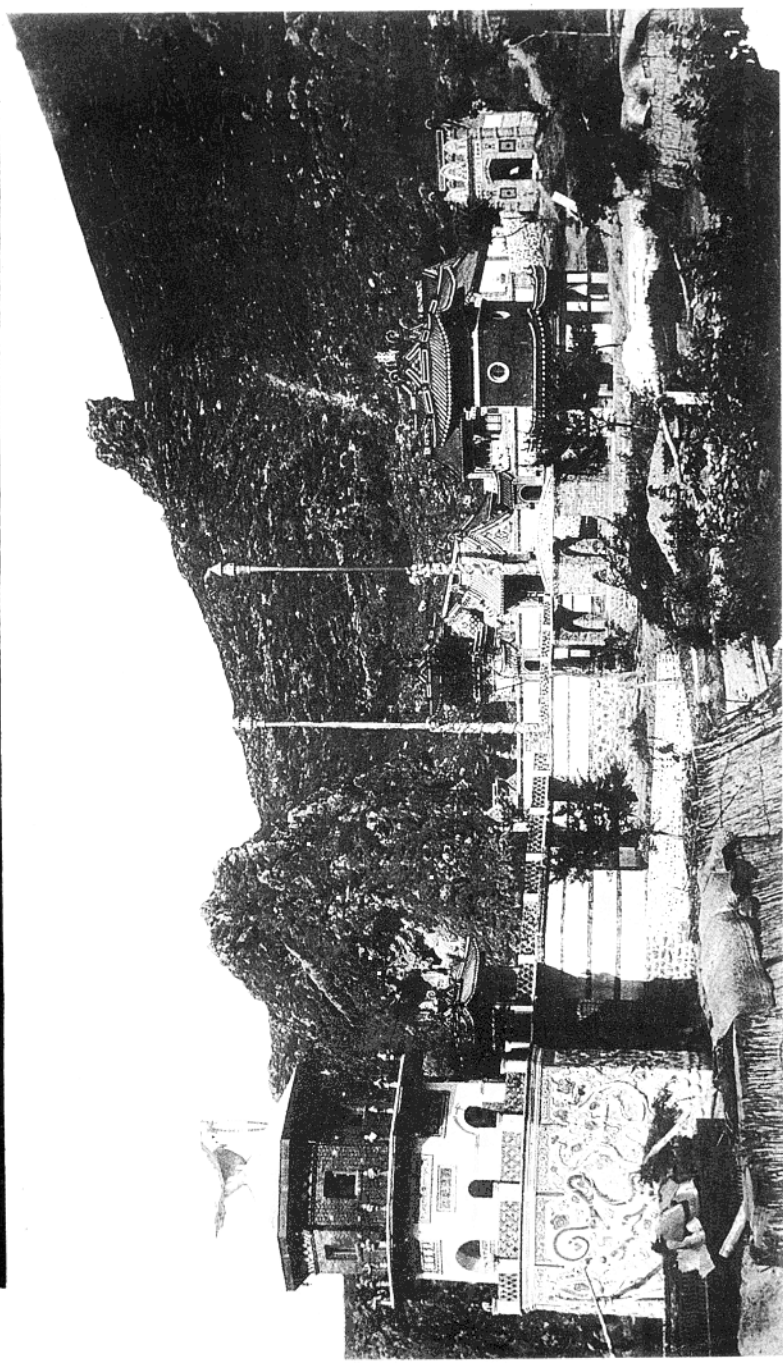
华夏文化出版社

錦州省特設旗右木凉井子山靈寺上殿全



Full view of the upper house of Lingshan Temple

錦州省特默右旗涼水井靈山寺天齊廟全景影紀念



The old photo of Tianqi Temple, one of Lingshan Temple

顾 问	Consultant	主 编	Editor in chief
傅万河	Fu wanhe	张助群	Zhang zhuqun
副主编	Deputy editor in chief	编 辑	Editor
韩立新	Han lixin	石国民	Shi guomin
翻 译	Translator	郭志东	Guo zhidong
刘长顺	Liu changshun		

作者(按姓氏笔画排列)

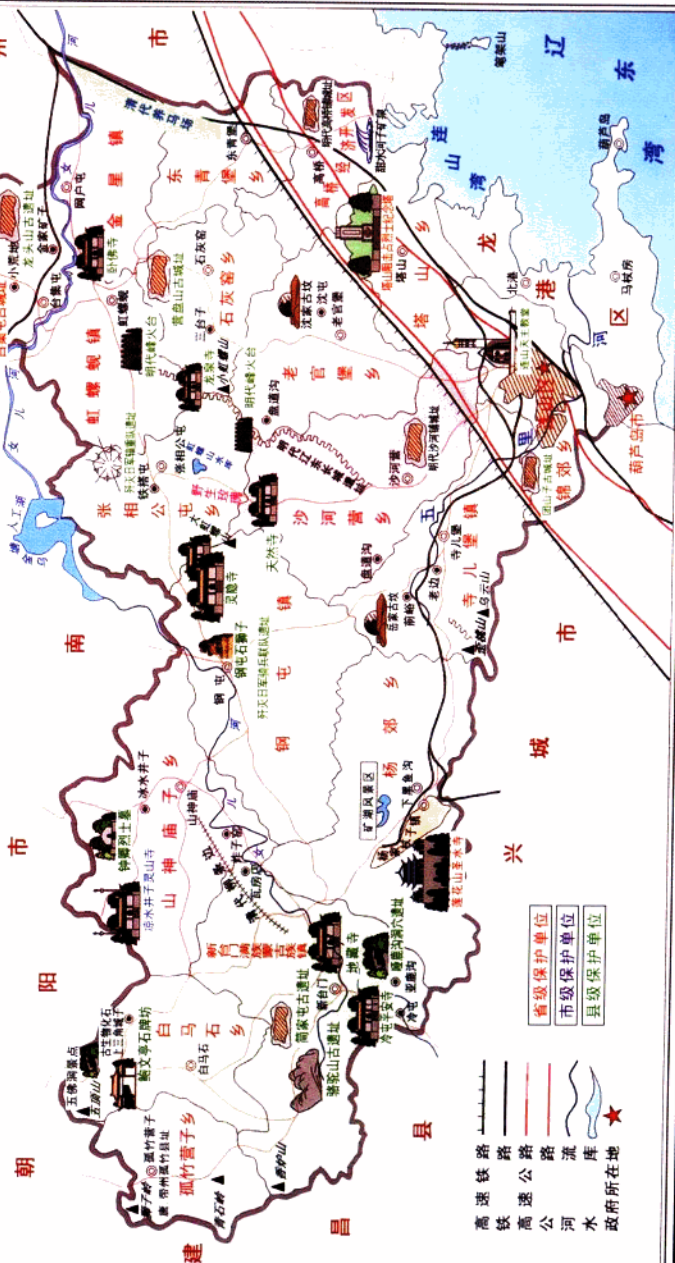
于泉洲 王文印 王化青 王俊德 石 文 石国民
叶文祥 许长文 李向东 李凤华 李 红 杨铁光
杨连胜 佟向群 袁 君 荆利斌 赵千春 韩立新
张玉珍 张老渠 张学刚 张助群 张 涵 曹起礼
钟歧明 高 尚 郭长林 郭吉安 郭志东 夏雨恩
蒋志杰 黄秋声 傅万河

Writers

Yu quanzhou	Wang wengyin	Wang huaqing	Wang junde
Shi wen	Shi guomin	Ye wenxiang	Xu changwen
Li xiangdong	Li fenghua	Li hong	Yang tieguang
Yang lianshen	Tong xiangqun	Yuan jun	Jing libin
Zhao qianchun	Han lixin	Zhang yuzhen	Zhang laoqu
Zhang xungang	Zhang zhuqun	Zhang han	Cao qili
Zhong qiming	Gao shang	Guo canglin	Guo jian
Guo zhidong	Xia yuen	Jiang zhijie	Huang qiusheng
Fu wanhe			

葫芦岛市连山区名胜古迹分布图

The Map of Scenery & Historical Sites in HuLuDao City



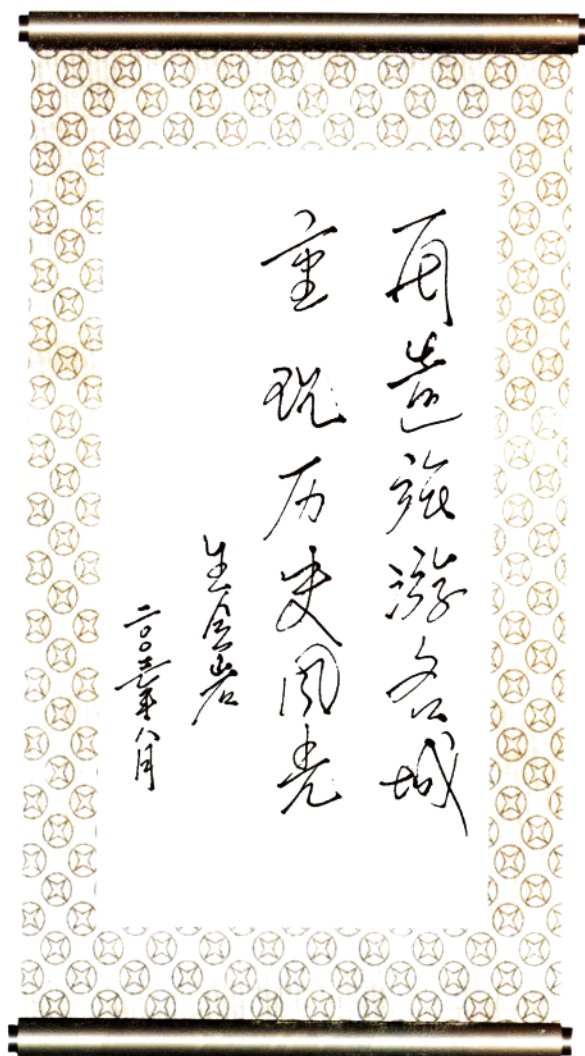
人间仙境：
灵山钟秀
五水佳随

李玉麟

2003.8.5

区委书记李玉麟题词

The Inscription written by Li yulin, the secretary
of Lianshan district CCP



角造旅游名城
重现历史风采

王会岩

二〇〇五年八月

区长王会岩题词

The Inscription written by Wang huiyan,
the head of Lianshan District Government

前言

《葫芦岛风景名胜丛书》即将与读者见面了,《灵山·圣水》是其中的第一部分。葫芦岛是我可爱的家乡,名山秀水千秋文化,人杰地灵百代风流。是人民用血汗把我养育,是人民创造了英雄的历史、灿烂的文化。“把葫芦岛展示给世人”这一想法经常在我脑海中萦回,在朋友们的热情鼓励之下,尤其是伴随旅游产业的崛起,更使我坚定了信心。因为这部书不仅具有珍贵的史料价值,而且具有广泛的实用性。2002年,我担任了连山区文联名誉主席、作家协会主席。2003年,我又兼任市作家协会副主席,更觉得自己有责任、有义务带领连山区作家协会会员,爱连山、写连山,爱宝岛、写宝岛,为文化兴区、为争创全国旅游名城贡献一份力量。

葫芦岛是一座美丽的海滨城市。地处辽宁省西南部,南临渤海,北倚燕山余脉,闻名于世的辽西走廊横亘全境,素有“关外第一市”之美誉。集山、海、城、泉、岛、寺于一体,自然景观与人文景观交相辉映,是一颗镶嵌在祖国母亲金鸡项下的璀璨明珠。早在几万年前就有人类在此繁衍生息,有文字记载的历史就有2,800多年,明末清初,已发展为辽西重镇。因其处于关内外交通的要道,战略地位十分重要,自古以来就是兵家必争之地。明朝与后金的“宁远大捷”、“宁锦大捷”,李自成与吴三桂的“一片石”大战,民国期间的两次“直奉大战”,解放战争期间的辽沈战役“塔山阻击战”等著名战役都曾在这里发生。自然、历史的变迁和社会的发展给葫芦岛市留下了大量的文物古迹和风景名胜,形成了多姿多彩的旅游风光。世界文化遗产九门口长城,500多年前的明代古城——兴城,秦汉遗址碣石宫,世界上第二

个“比萨斜塔”——瑞州歪塔，圣水清流、构筑独特、三教合一的圣水寺，钟灵毓秀、洞幽石奇、宗教色彩浓郁的灵山风景区，无一不向你展示出宝岛悠久的历史，灿烂的文化……

按照省委、省政府的指示精神，市委、市政府正在加速国际性、国家级、最适于人类居住的现代化沿海开放名城的建设。充分利用华北地区、东北地区两个大黄金扇面，建设一条黄金走廊，把区位优势、资源优势和环境优势转化为旅游开发的产业优势，使旅游业成为支柱产业。

连山区是葫芦岛市的主城区，是坐落在辽西走廊之上的一片神奇的土地，是发育成葫芦岛市健壮躯体的原始胚胎。境内 102 国道、京沈高速公路、京哈铁路、秦沈高速铁路过境而过，柏油公路四通八达，机场、港口坐落两翼，构成海、陆、空立体“丝绸之路”。境内西北部群山峰峦叠嶂，谷岭交错，著名的灵山风景区就坐落在此。中部大、小虹螺山巍峨壮观、挺拔俊秀，文物古迹颇多，素有“北方小黄山”之称。境内河流蜿蜒交错，其中女儿河境内流长 98.61 公里，区内流域面积 1,013.08 平方公里。灵山寺、圣水寺、龙泉寺、灵隐寺为东北名寺，历史悠久、文化底蕴丰厚。哑鹿沟天然溶洞、打渔山生态旅游区、虹螺湖等自然景观更加多姿多彩。海滨浴场浪缓沙平，每逢夏季阳伞如云、游人如织。来自黑龙江、吉林、内蒙、山西、河南等地的游客川流不息，尤其是京、津、唐和沈、大、鞍、抚、本两大城市群通过高速公路只需 2.5—3.5 小时即可到达。是名副其实的“北京后花园”、“沈阳度假村”。

连山区自古以来就是多民族杂居地区，隶属关系变换频繁，历史上民族之间的斗争与融合、文明的创造与野蛮的破坏、统治集团的对外开发与封锁表现得非常突出，其战略地位历来为政治家、军事家所瞩目。清高宗（乾隆）写诗赞曰：“连山相连塔山峰，沟壕壁壘凡几重。以守则固以战胜，将以勇气吞辽东”。明清之际，连山地区战争持续二十几年，往复夺取塔山一带。解放战争期间，著名的辽沈战役塔山阻

击战就发生在此。塔山阻击战是以少胜多的光辉范例,在世界军事史上占有重要地位。如今,在当年战火硝烟的阵地上,修筑了一座“塔山阻击战烈士纪念馆”,为连山秀美山川和英雄的历史增添了光彩。现纪念馆已开辟成国家级爱国主义教育基地,成为连山区的特色旅游文化。

在建设国家级、国际型现代化沿海开放名城的进程中,连山区能深刻领略旅游产业——新兴的支柱产业的内涵,率先牵动、潜心研究。区委、区政府在多次考察、反复论证的基础上,决定把灵山寺的开发作为连山区旅游产业的龙头企业,作为全面建设小康社会、带动贫困山区脱贫致富的富民工程。举亿元之力,坚持高标准开发,打造精品工程。与313海滨、兴城古城形成资源共享。

灵山风景区占地12平方公里,位于山神庙乡凉水井子和围屏山两村境内,距葫芦岛城区48公里,以山峰俊秀、古刹雄奇、岩石怪异、石洞幽深、清泉甘冽、植被繁茂而著称,属国家A级旅游风景区。灵山寺庙始建于清乾隆三年(公元1738年),嘉庆十一年(公元1806年)重修。是以上院、中院和下院为主体的广泛分布的庙宇群,为佛、道合二而一的宗教场所,具有265年的历史。灵山风景区是一处具有极大开发价值的旅游资源,其景点的集中性、景观的多样性、地质构造的特殊性和物种的丰富性在辽西名山中冠压群芳。灵山一带的地貌类型,属于侵蚀剥蚀构造低山区,多为基性岩和灰质岩类。这种地质构造,促成了灵山的岩石奇形怪状,而且大小山洞变化多端。丰厚的文化积淀和优美的传说故事更为灵山增添了几分神秘。灵山风景区是一处集山水园林、宗教文化、建筑艺术、历史文化、民族文化、爱国主义教育基地于一体的旅游胜地。

圣水寺位于连山区杨家杖子经济技术开发区南面,距市区30公里。始建于清康熙五十三年(公元1714年)伪满时期再次扩建,到1938年,已初具规模。圣水寺北倚莲花山、南临圣水泉。莲花山岩石奇特,远望似盛开的白莲;圣水泉终年流淌,传说能医百病。圣水寺从

创建至今经历了 301 年,其后几经扩建,已形成了儒、释、道三教合一的、具有相当规模的古建筑群。寺庙占地 1.5 万平方米,周围形成约几十平方公里的风景区。圣水寺的建筑独具特色,寺庙中的佛像栩栩如生,牌匾、楹联举目皆是。石拱桥下莲花池中金鱼戏水,池的四壁还雕有二十四孝图,真乃精美至极。天元宫、钟鼓楼、明心楼、碧云宫各具特色,被国家文化部古建筑专家称为“东北古建筑什锦小品”。圣水寺已成为国家 AA 级旅游风景区,属省级文物保护单位。

为推动旅游业的崛起,连山区作家学会积极予以配合。会员们冒着酷暑,伸入现场进行采风活动,深入挖掘历史资料,广泛收集民间传说。为了真实地、完整地反映景区风貌,不惜翻山越岭、攀岩爬树,在深入调查研究的基础上,昼夜兼程集中创作、整理和编辑,多方求助,终成此书。

本书力求集历史资料、宗教文化、文学作品、旅游风光、书法楹联、摄影绘画、英雄人物于一体,巧妙地折射出连山区的历史和现实风貌。努力塑造兴区之魂,创造出具有连山特色的文化精品。本书旨在让外界的人了解连山,了解葫芦岛,加强合作与交流。让生活在这块热土上的人们更加热爱自己的家乡,以火热的情怀投入到全面建设小康社会中来。

在编写此书的过程中,受到了连山区领导、市文联、市作家协会领导的大力支持,得到了同志们的多方帮助,在此,一并表示感谢。由于本人才疏学浅,经验不足,再加之时间仓促,错误之处在所难免,敬请读者批评指正。

编者:张助群

2003 年 7 月 14 日

Perface

Series Books of Huludao Senery & Relic will come into being soon. The book of Spiritual Mountain Sacred Water is the first part of them .Huludao is my lovely hometown.It is full of famous mountains, rivers and famous people. It is the local people who raised me up and created the heroic history & splendid culture. The idea of revealing Huludao city to the outside world often occurs in my mind. With the encouragement of my friends , especially on seeing the booming of tourism industry,I strengthened the confidence of my idea.Because this book has not only expensive historical value, but a wide-range uses. in 2002, I was appointed as the honorary chairman of Lianshan District Literature Association, And the Chairman of Writers Association. In 2003,I was appointed as the depute chairman of the Municipal Writers Association.So I feel that I have responsibility to lead all the members of Writers Association of Lianshan district to write something about Lianshan and Huludao.So we can give contribute to creating our city into a national famous tourist city.

HuLuDao is a beautiful seashore city. It locates in southwestern part of Liaoning province. Facing toward Bohai Sea in the south, leaning against Yanshan Mountain in the north, being crossed by the famous Liaoxi Corridor, it has the beautiful name of "the first city outside shanhaiguan Pass". It owns natural scenery and culture scenery such as mountains, sea, ancient city, springs, islands and temples. It is a splendid pearl fixed under the neck of Motherland. early back to ten thousands year, Human Being has lived here. It has a history of 2800 years noted by chinese characters. By the end of Ming dynasty and the beginning of Qing dynasty (about 1600 AD) It had developped into an important town of Liaoxi

Corridor, and has been a famous battle field, because of its traffic and military location, where many battles took place, such as Ningyuan Battle and "Ningjin Battle" between Ming dynasty and the Latter Jin dynasty, "Yipianshi Battle" between Li zhicheng and Wu shangui, "Zhifeng Campaign" during Republic of China and Liaoshen Campaign during Liberation War of China, and so on. It donated plenty of historic sites and scenery spots to HuLuDao city with the changing course of the nature, history and social development. Jiumenkou Great Wall, the world culture heritage, Xingcheng city which was once the ancient city of Ming dynasty, the Ruins of Jieshi Palace in Qing and Han dynasty, Ruizhou Sloping Tower which is the second Bisha tower in the world, the shengshui Temple where the water is clear, the building is unique and Lingshan Scenery Area which is full of religious atmosphere. All of these show the long history and splendid culture of Huludao city.

According to the spirit of provincial party committee and provincial government, municipal party committee and government of Huludao are speeding up the development of Huludao as a best suitable place for human's living, a international state-level city, and a modernized seashore city opening to the outside world. The city is being built into a Golden Corridor making full use of North China & Northeast China and turning all the advantages of resources, situation and environment into the advantage of tourism which will become the leading industry of the city.

Lianshan District is the downtown of Huludao city which situates on the Liaoxi Corridor. It is the oringes of the body of the city. There are No. 102 state highway, Jingshen express highway, jingha railway and qinshen express railway across the district. There are also airport and seaport sitting on two wings of the district, In the northwest parts, mountains and billows are hand in hand. Where locates the famous Lingshan Scenery Area. There are big and small

Hongluoshan Mountains which are full of cultural historical sites in the middle part. They are called small Huangshan Mountain in North China; there are many rivers of which Daughter river is famous. Its drainage area in the district is 1,013.08 square km. Full Length of 98.61 km.

Lingshan, shengshui, Longquan, Lingyin Temple are famous temples in Northeast China with long history and rich culture. They have many colourful scenery, for example Yalugou (natural cave), Dayushan Tour Area, Hongluohu Lake, etc. The beach along Huludao city is a dreamful place for visitors. visitors all over china gather here in summer. The city is called the Backward Garden of Beijing & the Holiday Village of Shenyang city.

Since ancient time, Lianshan district has been a mingle area with many nationalities. It was offiliated frequently. during the Liberation War of China, where the famous Tashan fight, Liaoshen Compainge took place which holds on important status in the history of the world military. today a Monumental Museum of Tashan Fight was built on the site of the war. now It became a Patriotic Education Base of state-level. It formed a tourism culture with Lianshan Characteristic.

In the process of building state-level and international modern seashore city, People of Lianshan District appreciates fully the meaning of the tourism industry as a leading part. on the base of Seveal demonstrations and investigations, CCP party committee of lianshan district and people's govermmert decided to develop the Lingshan Temple as the leading tourism industry for a project of taking off the poverty. An investment of a hundred million RMB has been put into this project in order to share the rescorce with Longwan seashore and Xingcheng city.

Covered an area of square 12KM, situated at Liangshuijing village and Weiping village of Shanshengmiao town, Lingshan

Scenery Area is only 48KM away from Huludao. It is famous for beautiful peaks, ancient temples, queer rocks, deep cave, sweet springs and dense forest, as a A-grade tourist region of the state. It was built in 1738 A.D. rebuilt in 1806 A.D. as a site of Fuoard and Dao religion, with a history of 265 years. Its main body is divided into upper Yards, central yards and lower yards. It has a great value for developpment. It is the famous Mountain in the west part of Liaoning province because of its many scenery spots, particular gedogy, and plenty of species. the geology type in Lingshan Mountain is belong to eroded construction full of bedrocks and ashy rocks. This gedogy type formed many rocks and caves of grotesque shapes. plenty of culture and beautiful legends added some mystery for Lingshan Mountain where it is a tourism place Merging mountains rivers, gardens, religious culture, architectural arts, historical culture nationality. Culture and patriotic education base into an organic whole.

Located in the south of Yangjiazhangzi Economic & Technologic Developping zone, Lianshan district, Shengshui Temple is 30KM away from downtown of Huludao city. It was built in 1714 (Kang xi 53 year in Qing dynasty) and reconstructed later, by the years of 1938, It began to take shape. It leans against Lotus Flower Mountain in the North and nexts to shengshui Spring in the south. with its peculiar rocks, Lotus Flower Mountain looks like the white-lotus in full bloom in distance. running all years long, It is said that Shengshui Spring can cure any illness. after 301 years, under several construction, Shengshui Temple has formed a building complex which has three religions namely confucianism Taoism and Buddhism in one, and certain scale.

Covered an area of 15 thousand square meters, the Temple formed an Scenery Zone of several tens of square km. with specially style of its buildings, lively statues of Buddha, boards and

couplets scattered here and there. under the Stone arch Bridge, golden fish plays water in Lotus Flower Pool, the pictures of 24 dutiful sons curved on four walls of the pool. Tianyuan palace, Zhonggu drum Tower, Mingxin Building and biyun Palace are called as the assorted biscuits of ancient buildings by the experts of the State Culture Department now, it became an AA grade tourism scenery of the State. It is also a historic site protection of provincial level.

In order to promote the tourism industry, the members of Writers Association of Lianshan District are active in it, they went into the mountain to collect the historical materials, the folks and legends, wrote and edited day and night. on the base of deep investigation All the hard works fulfilled this book.

This book merges the literature works, historical materials, religion culture tourism scenery, handwriting, couplets, Photography painting and heroic characters into an organic whole which reflects the history and the reality of Lianshan district. Its Main idea lies in that letting the outside world know Lianshan District and Huludao city. Strengthening the corporation and exchange. letting people who lives here love their hometown deeply and taking part in the Construction of building Comfortable Society with high spirits. During the process of fulfilling the book. We have received the help and supports from the leaders of Lianshan District, Literature Association of Huludao and many friends. here we thank for them. the mistakes in it can't be avoided due to the shortcoming of our own and shortage of time. So it is my honour for you to correct them.

Editor: Zhang zhuqun
July 14th, 2003.

目 录 contents

前言	张助群
the Preface	by Zhang zhuqun
灵山开发论证图片	1
the Pictures of Lingshan developpment	
灵山文物风景区简介	韩立新 3
the Brief Introduction of Lingshan Historical Site & scenery	
Area	by Han lixin
走进灵山	张助群 6
Step On Lingshan	by Zhang zhuqun
灵山风景照片	16
the Pictures of Lingshan Scenery	
灵山奇石照片	18
the Pictuures of Queer Stones in Lingshan Mountain	
灵山幽洞照片	26
the Photoes of Deep Caves in Lingshan Mountain	
灵山寺庙照片	30
Photoes of the Temples in Lingshan Mouuntain	
凉水井子灵山寺	韩立新 39
Lingshan Temple at Liangshuijingzhi Village	by Han lixin
凉水井子灵山寺	杨连胜 44
Lingshan Temple at liangshuijingzhi Village ...	by Yang liansheng
凉水井子灵山寺	王俊德 48
Lingshan Temple at liangshuijinezhi Villag	by Wang junde
凉水井子灵山寺	李向东 52
Lingshan Temple at Liangshuijingzhi Village	by Li xiandong
凉水井子灵山文物风景区	袁 君 54
Lingshan Historical Site & Scenery Area in Liangshui- jingzhi village	by Yuan jun