

RIBEN XINCHAO TAOQUN

KUANSHI YU CAIJIAN



28



64



41



55



14



71



2



87

# 日本新潮套裙 款式與裁剪

上海人民出版社

錦 驊 ● 編

TC057 11 00

RIBEN XINCHAO TAOQUN  
KUANSHI YU CAIJIAN

# 日本新潮套裙款式 與裁剪

錦 驊 ● 編

上海人民出版社

责任编辑  
装帧设计

顾兴业  
邹纪华

**日本新潮裙款式与裁剪**

锦 卯 编

上海人民出版社出版、发行

(上海绍兴路54号)

发行者在上海发行所经销 吴县文艺印刷厂印刷

开本 787×1092 1/16 印张 3.5

1988年6月第1版 1988年6月第1次印刷

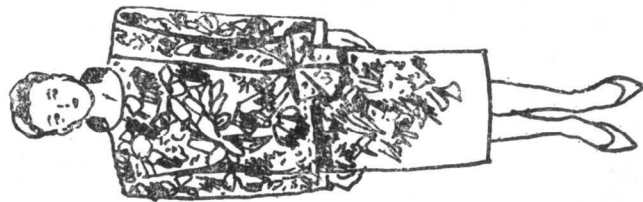
印数 1—30,000册

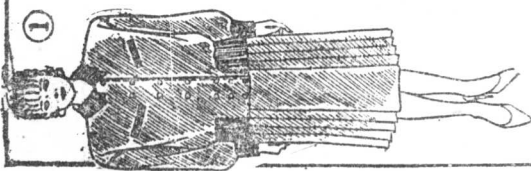
ISBN 7-208-00624-5/Z·42

定价: 2.20元

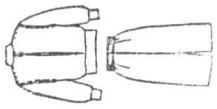
## ● 前言

近年国内外时行的套裙是服装新潮中的一朵奇葩。穿着她既庄重大方，又美丽洒脱，给人气度不凡的感觉，深受老少女性的青睐。本书介绍的100例四季不同的套裙款式，是当今日本套裙新潮中的佼佼者，不但适合于中国人穿着，而且制作简便，面料要求可高可低，相当实用，相信读者定能从中挑到满意的款式。





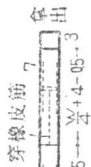
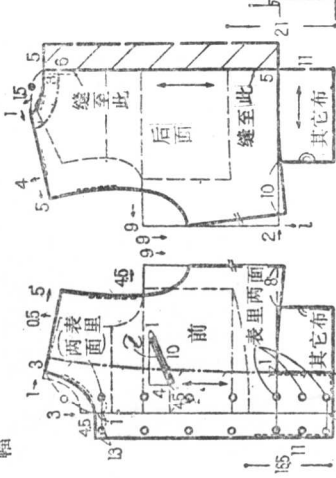
① 材料：毛、绸混



纱布 2 m 80 cm

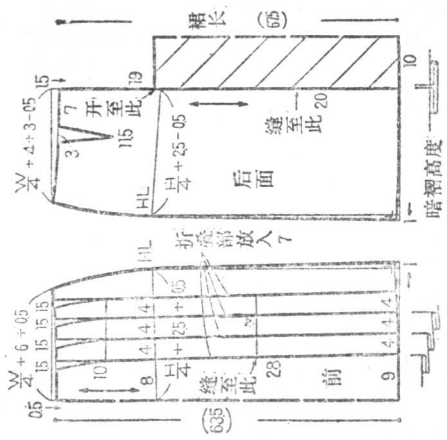
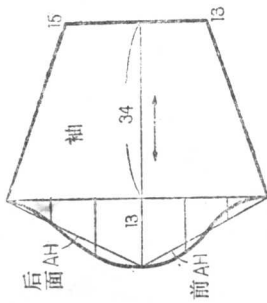
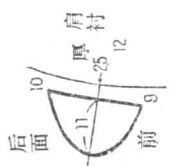
100 cm 门幅

领



穿橡皮筋

纽扣的直径 1.2  
缝线线 0.2 0.5

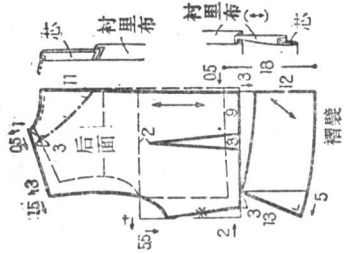
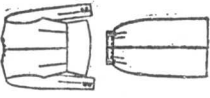


②

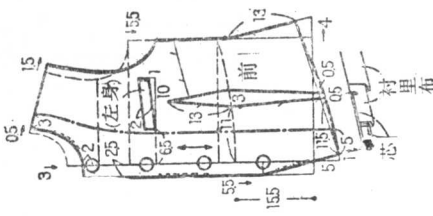
材料：布 100 cm 门幅

上衣 1 m 60 cm

裙 90 cm

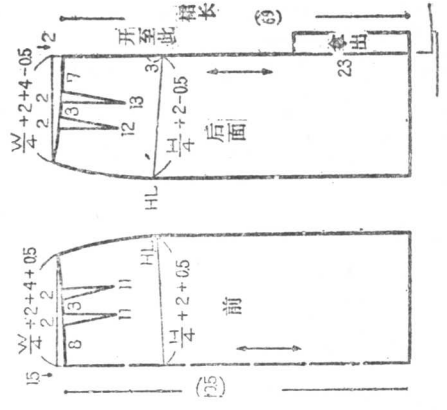
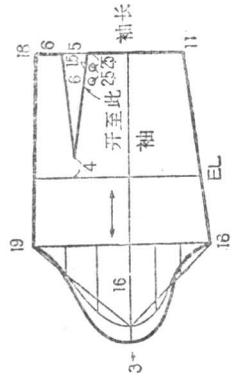
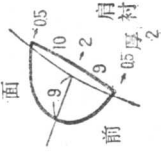


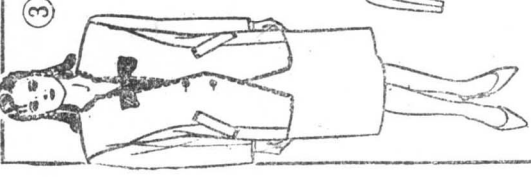
缝线线 0.2



纽扣的直径 1.4 2.4

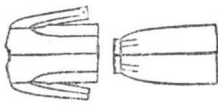
缝线线 0.2



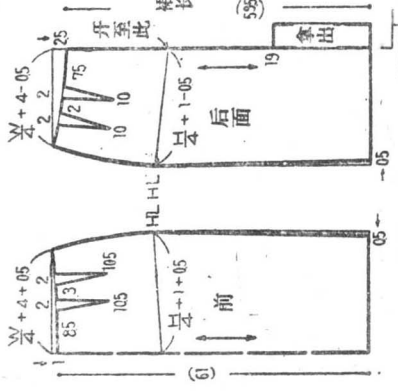
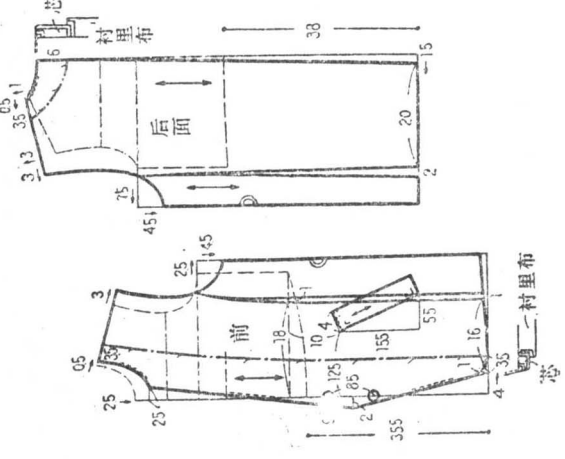


3

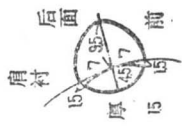
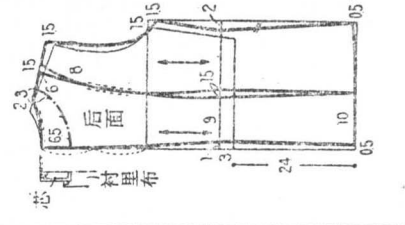
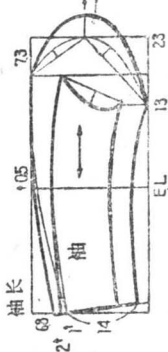
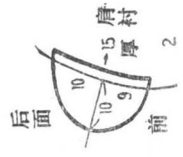
材料：布 2 m 60 cm



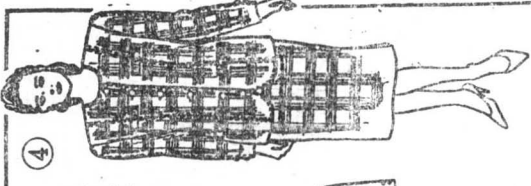
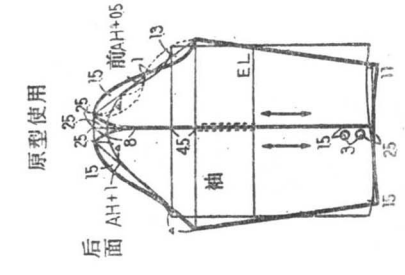
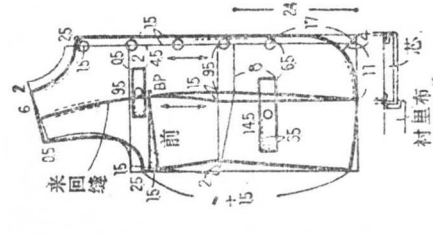
150 cm 门幅



纽扣的直径 2  
缝线线 0.2 0.5

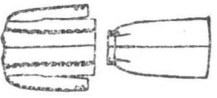


纽扣的直径 2.2 2.5



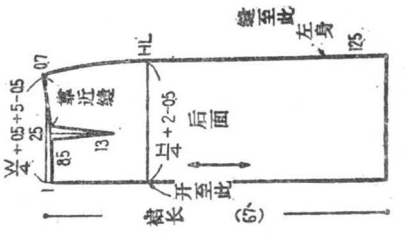
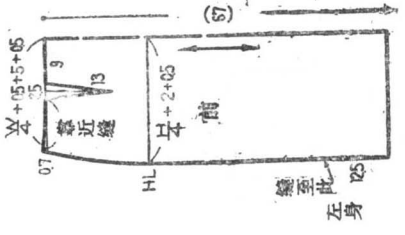
4

材料：  
毛绢混纺布 2 m 30 cm

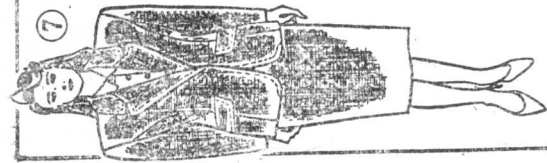


150 cm 门幅

缝线线 0.2 0.6

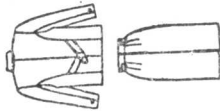






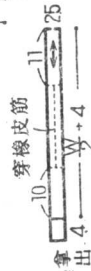
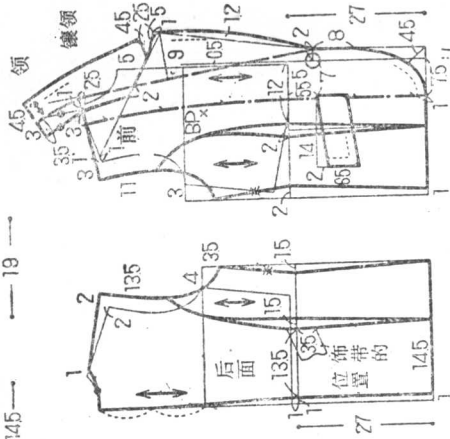
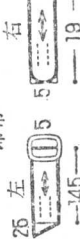
⑦

160 cm 门幅

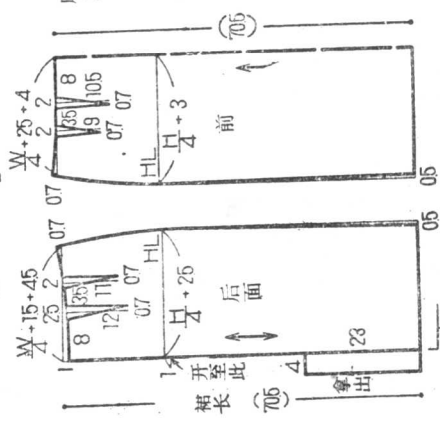


●材料：丝绸布 3 m

饰带

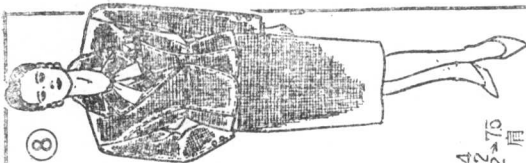
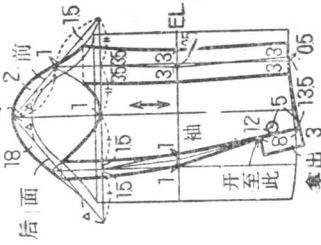


肩衬



纽扣的直径 = 2.3

原形使用

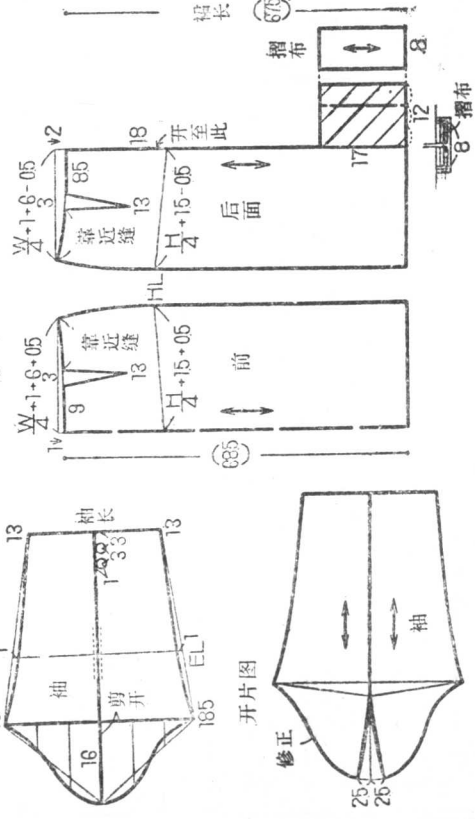
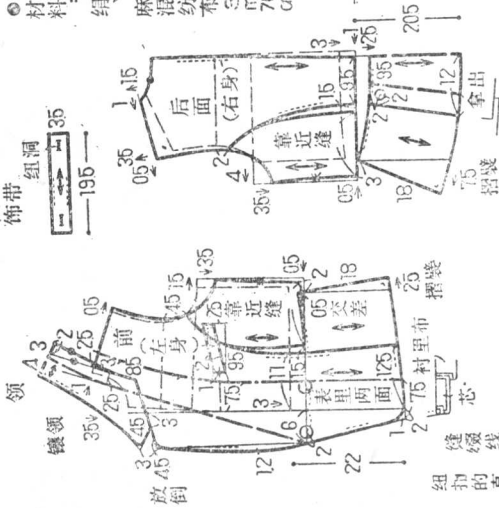


⑧

90 cm 门幅

●材料：绢、麻混纺布 3 m 70 cm

饰带

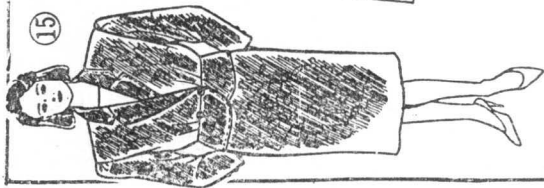








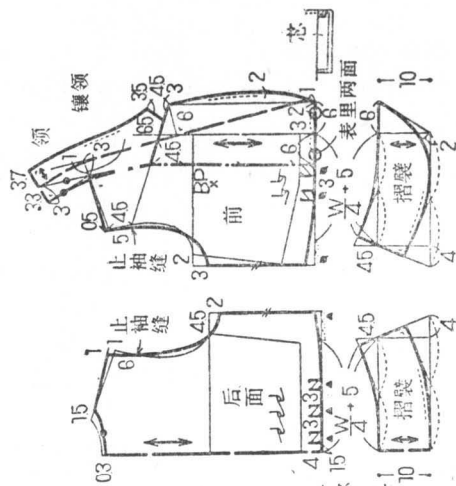
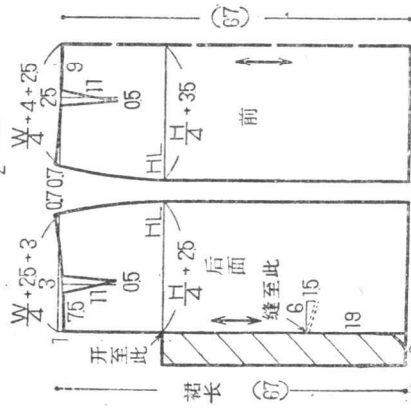
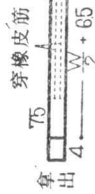
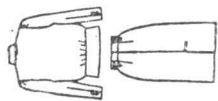




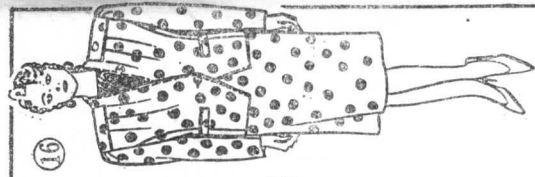
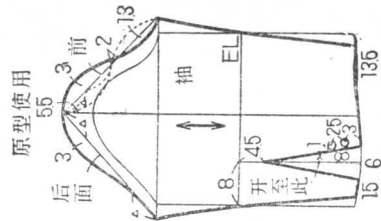
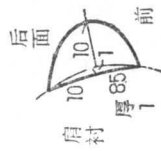
15

●材料：布 4 m 30 cm

90 cm 门幅



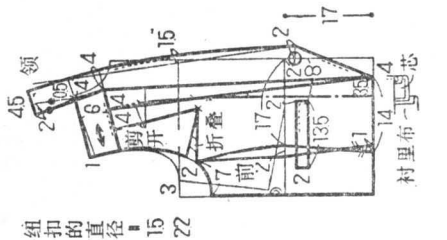
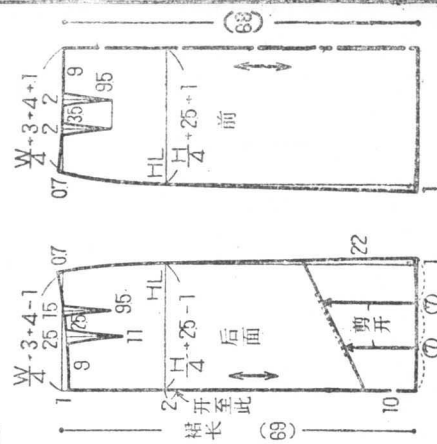
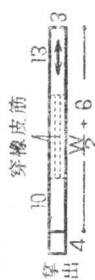
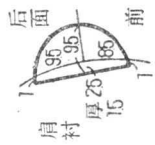
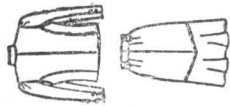
缝线 05  
纽扣的直径 15 22



16

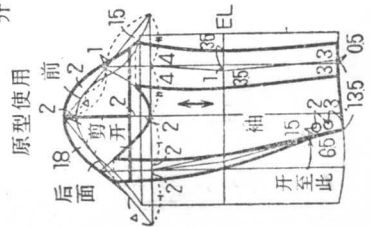
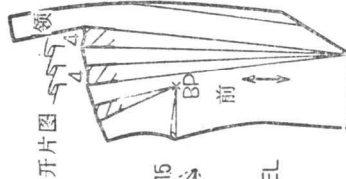
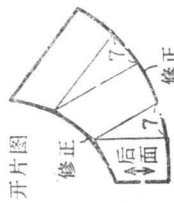
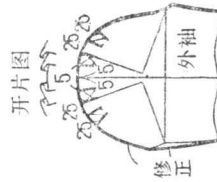
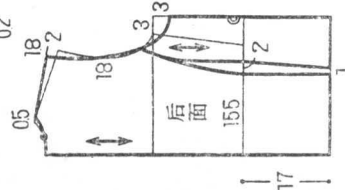
●材料：布 3 m 90 cm

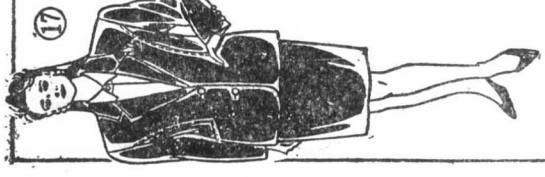
90 cm 门幅



纽扣的直径 15 22

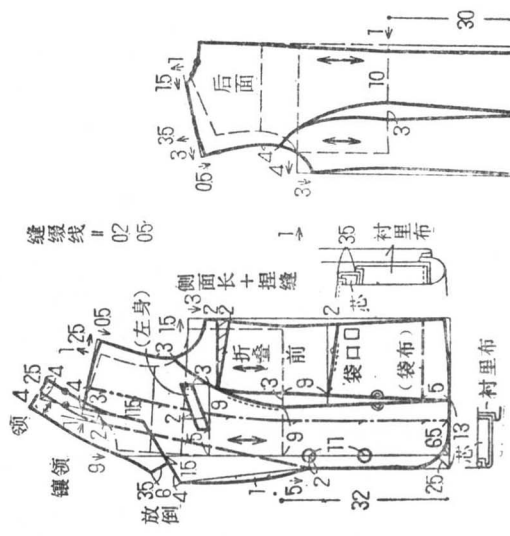
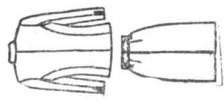
缝线 02





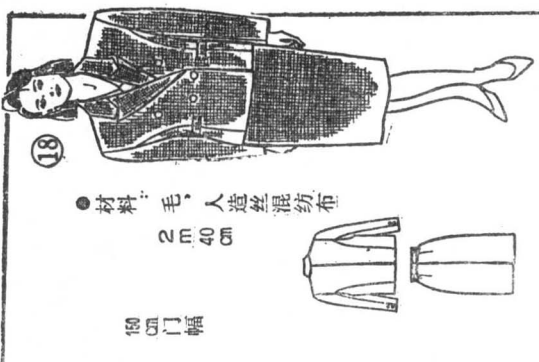
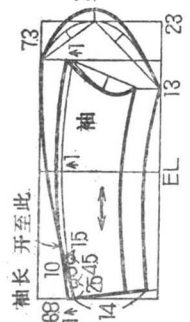
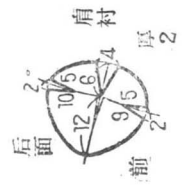
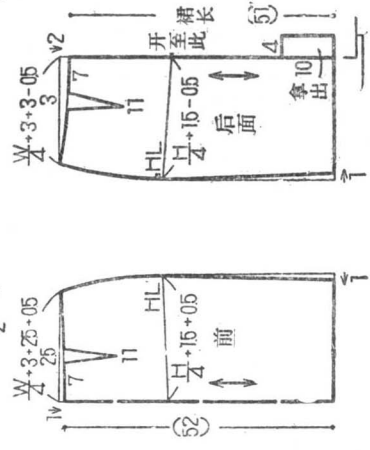
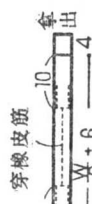
17

●材料：布 2 m 50 cm  
150 cm 门幅



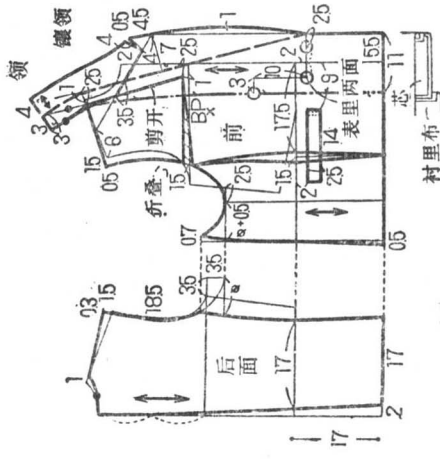
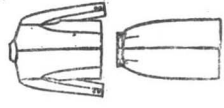
缝绲线 1 02 05

纽扣的直径 1 15 22



18

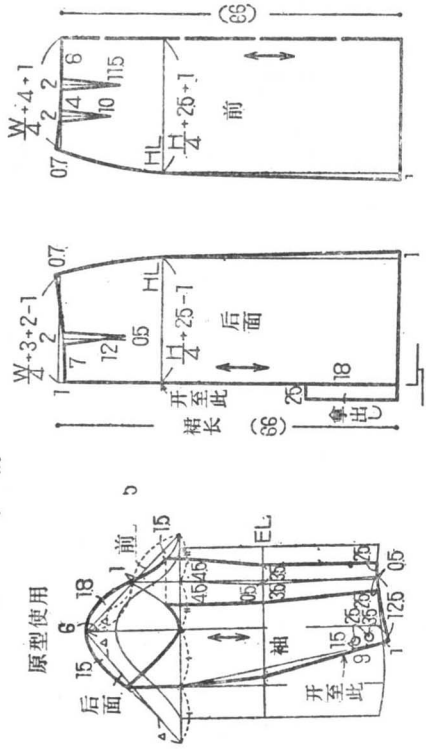
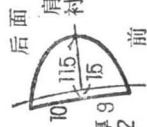
●材料：毛，人造丝混纺布  
2 m 40 cm



150 cm 门幅

纽扣的直径 1 15 2

缝绲线 1 02 07





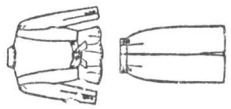




23

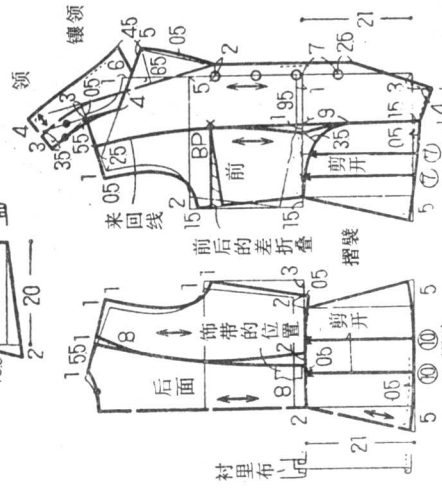
● 材料：布 4 m 60 cm

90 cm 门幅



饰带  
靠近缝至 5 (后面同样)

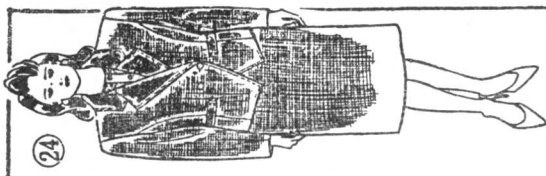
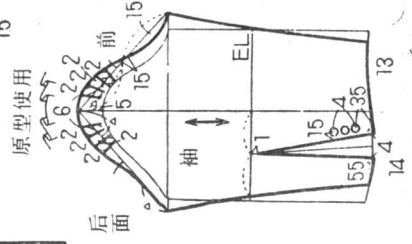
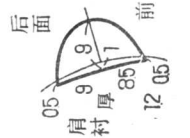
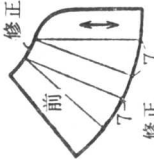
105 2 20



穿橡皮筋

开片图

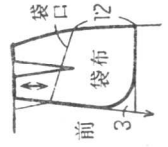
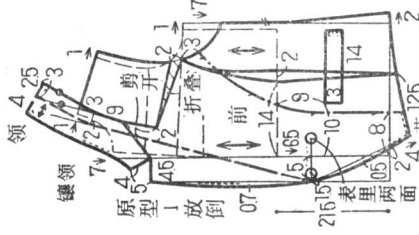
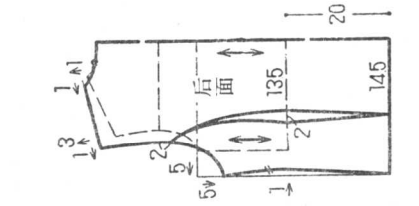
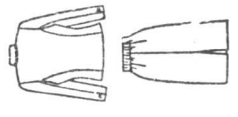
纽扣的直径 = 13 15  
缝绉线 = 02 06



24

● 材料：布 4 m

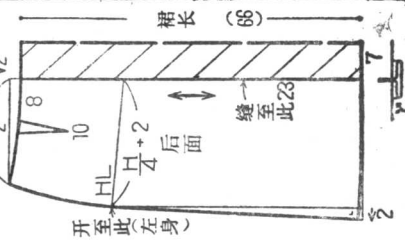
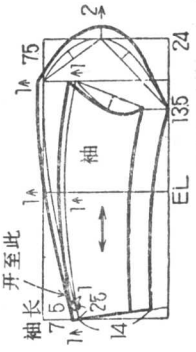
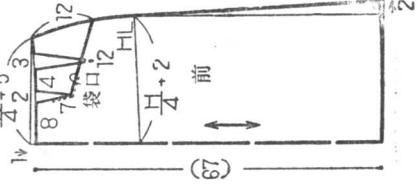
90 cm 门幅



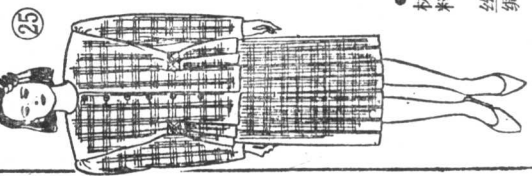
纽扣的直径 = 15 18  
缝绉线 = 02 06



穿橡皮筋

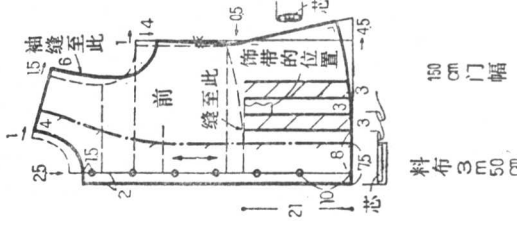






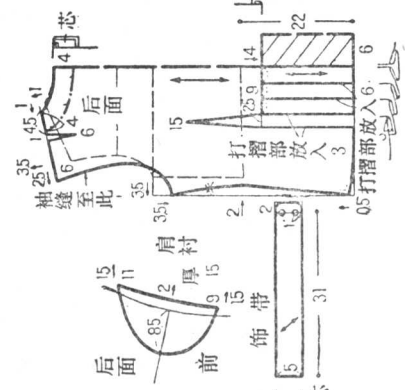
25

●材料：丝绸



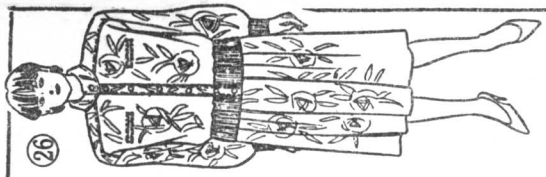
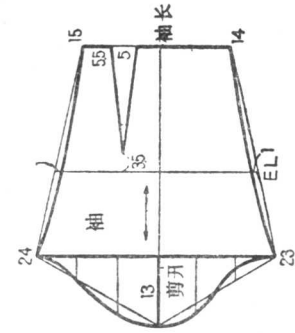
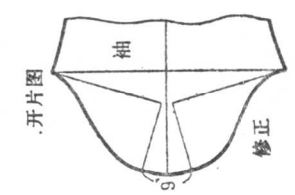
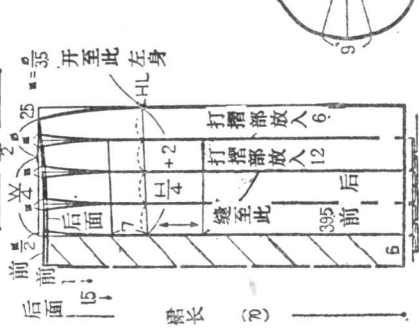
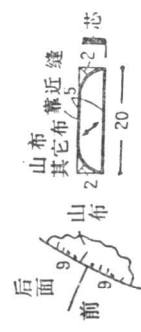
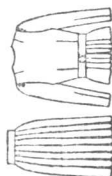
100 cm 门幅

料布 3 m 50 cm



纽扣的直径 1/4

缝线线 = 0.2

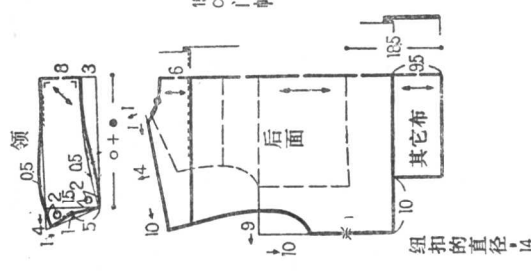


26

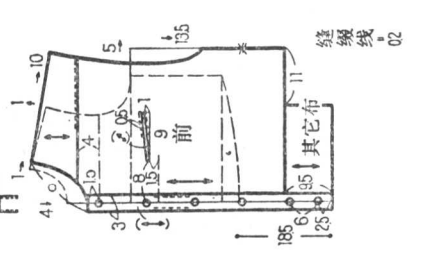
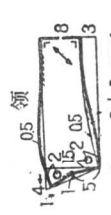
●材料：毛、人造丝

混纺布 3 m 40 cm

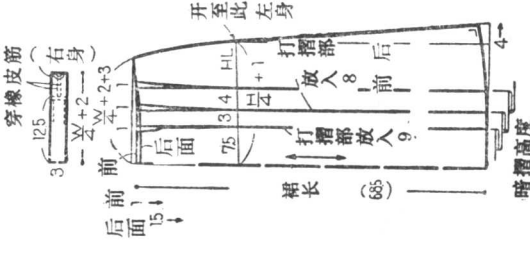
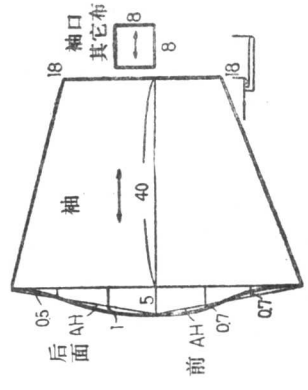
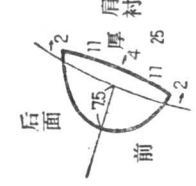
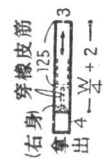
100 cm 门幅



纽扣的直径 1/4



缝线线 = 0.2



开至此左身