

RIHAN.CC 048

RIHAN.CC-048>>SCHOOLS · LIBRARY COLLECTION>> H.K. RIHAN INT'L CULTURE SPREAD LIMITED

編著：香港日瀚國際文化傳播有限公司 <http://www.rihan.cc>

Schools · Library Collection 學校 · 圖書館特輯

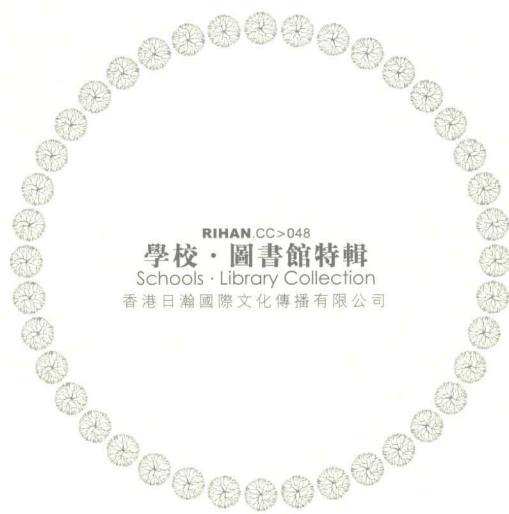


◎ 華中科技大學出版社

www.hustp.com

TU241-64
122
:48
2007

248



圖書在版編目 (CIP) 數據

RIHAN.CC>048 學校・圖書館特輯

香港日瀚國際文化傳播有限公司 編

— 武漢：華中科技大學出版社，2007.3

(RIHAN.CC 文化專集)

ISBN 978-7-5609-3945-2

I. R... II. 香... III. 學校圖書館—建築設計—作品集—世界 IV. TU242.3

中國版本圖書館 CIP 數據核字 (2007) 第 008725 號

RIHAN.CC>048 學校・圖書館特輯

香港日瀚國際文化傳播有限公司 編

地址：香港中環皇后大道中 142-146 號金利商業大廈 7 樓 7A 室

電話：(00852)25814966

傳真：(00852)28514966

電話：13052454324 13621898862 13916371789

主編：邢日瀚

責任編輯：王彩霞

責任校對：朱霞

責任監印：蔡曉瑚

出版發行：華中科技大學出版社

地址：湖北省武漢市洪山區珞喻路 1037 號

郵編：430074

電話：027-87557436 (銷售) 87544529 63782221 (郵購)

版式 / 封面設計：上海悉塔圖文設計制作有限公司

印刷：凱基印刷 (上海) 有限公司

開本：220mm × 300mm

印張：77.75

字數：1000 千字

版次：2007 年 3 月第 1 版

印次：2007 年 3 月第 1 次印刷

ISBN 978-7-5609-3945-2/TU · 119

定價：RMB ¥888.00 (1 套 4 冊)

RIHAN.CC>048 SCHOOLS · LIBRARY COLLECTION

EDITOR/H.K. RIHAN INT'L CULTURE SPREAD LIMITED

Address/Flat/Rm 7a, 7/F., Kimley Commercial Building,

142-146 Queen Road Central, H.K.

TEL/(00852)25814966

FAX/(00852)28514966

Mobile/13052454324 13621898862 13916371789

Chief-editor/Rihan Xing

Executive Editor/Caixia Wang

Executive Proofreader/Xia Zhu

Executive Manufacture/Xiaohu Cai

Publisher/Huazhong University of Science and Technology Press

Address/No.1037 Luoyu Road,Hongshan District,Wuhan,Hubei,P.R.China

Postal Code/430074

Telephone/027-87557436 (publish) 87544529 63782221 (order)

Design for Format and Cover/Shanghai XITA Graphic Design & Facture Studio

Press/Kaiji Printing Co.,Ltd.,Shanghai

Size of Book/220mm × 300mm

Total Pages of Printing/77.75

Words/1000 000

Order of Edition/The First Edition ,Mar. 2007

Order of Press/The First Edition of Press ,Mar. 2007

ISBN 978-7-5609-3945-2/TU · 119

Price/RMB ¥888.00(4 books of one series)

Some of the projects, which we can't contact with related architects. Once you see these images feel free to contact us.
我司拍攝的部分項目無法與相關單位聯系。請相關單位看到相關項目后，與我司聯系。

CONTENTS

目錄

RIHAN.CC_048

College / 大學

- 008 College of Arts Building, Paichai University / 培才大學文科學院
- 012 CCA Graduate Center, San Francisco / 加州藝術學院研究中心, 舊金山
- 020 Community School of Music and Arts, Mountain View /
社區音樂藝術學校, 山景城
- 028 Isala College, Silvolde / Isala 大學
- 038 Namseoul Euinhea Church (Milral School) /
南首爾 Euinhea 教會 (Milral 學校)
- 042 Pyeonghwa Nuri / Pyeonghwa Nuri
- 046 Kwangjoo Catholic University / 光州天主教大學
- 048 Capital Normal University International Culture Building Design /
首都師範大學國際文化大廈
- 060 The Institute of Architecture & Engineering - Shenzhen University /
深圳大學建築工程學院
- 082 Science & Technology Building, Shenzhen University / 深圳大學科技樓
- 092 The Teaching Building of the Sculpture Department of Sichuan Fine Arts
Institute / 四川美術學院雕塑系教學樓
- 100 China Executive Leadership Academy · Pudong / 中國浦東幹部學院
- 108 Planning of the campus of Tongji University (headquarter) /
同濟大學校園 (本部) 規劃
- 118 Dongguan Songshan Lake Productivity Promotion Base Academic
Exchange Center / 東莞松山湖生產力促進基地學術交流中心
- 126 Nanyang College in Wuxi / 無錫南洋學院
- 132 Suzhou Industrial Park Vocational & Technical College Complex Teaching
Building Design / 蘇州工業園區職業技術學院綜合教學樓
- 136 East Campus of Changzhou University / 常州大學城東校區
- 146 Anhui International Nursing College / 安徽國際護理學院
- 156 Shenyang Jian Zhu University New Section / 沈陽建築大學新校區

Middle School / 中學

- 164 Gavin Macrae-Gibson / 特魯門高級中學
- 170 Daegu Physical Education High school / Daegu 體育中學
- 180 Design of School of O.C.T., Shenzhen and C.E.R.I /
深圳華僑城中央教科所附屬九年制學校建築設計

CONTENTS

目錄

Primary School and Kindergarten / 小學、幼兒園

- 188 Hunnan No. One Primary School of Liaoning Campus School in Shenyang /
遼寧省實驗學校沈陽渾南第一小學
- 196 Bubbletecture M / 泡式建築 M
- 202 Xinzhou Kindergarten / 新洲幼兒園
- 212 Kindergarten of Zhuyun Country Villa / 竹韻山莊幼兒園
- 216 Primary School and Kindergarten of Times Rose Garden /
時代玫瑰園小學、幼兒園
- 220 School for Disabled,Herbrechtingen / 殘疾兒童學校
- 224 Kindergarten in Shenyang Aircraft Manufacture Company /
沈陽飛機制造公司幼兒園
- 228 Conduct of the Human Beings Which Changes / 人類變化的行為

Library / 圖書館

- 232 Peckham Library and Media Centre / 佩克姆圖書館和媒體中心
- 240 Library of Technical University, Delft / 理工大學圖書館
- 256 Songshan Lake Science-Technology,Park Library Dongguan /
東莞松山湖科技產業園圖書館
- 266 Xinghua File-Place / 興化市檔案館
- 272 Hansung University Library / Hansung 大學圖書館
- 278 Library Centre / 圖書館中心
- 282 University Library, Jacob and Wilhelm Grimm-Centr /
大學圖書館, 雅各布 威廉格林兄弟 - 中心



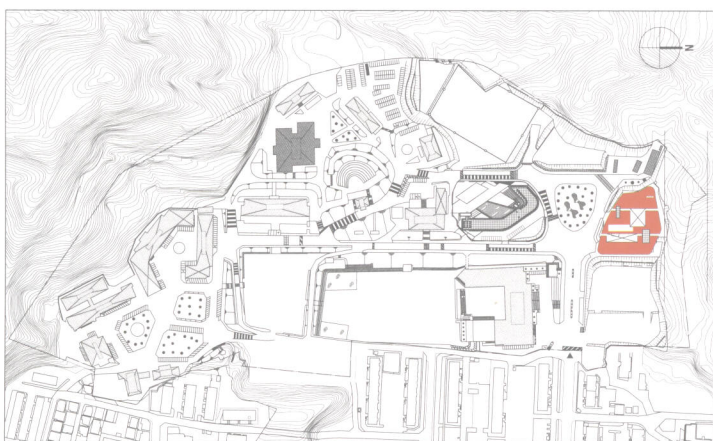
RIHAN.CC_048>>Schools·Library Collection >> 學校·圖書館特輯

College/ 大學

- 008 College of Arts Building, PaiChai University
培才大學文科學院
- 012 CCA Graduate Center, San Francisco
加州藝術學院研究中心, 舊金山
- 020 Community School of Music and Arts, Mountain View
社區音樂藝術學校, 山景城
- 028 Isala College, Silvolde
Isala 大學
- 038 Namseoul Euinhea Church(Milral School)
南首爾 Euinhea 教會 (Milral 學校)
- 042 Pyeonghoa Nuri
Pyeonghoa Nuri
- 046 Kwangjoo Catholic University
光州天主教大學
- 048 Capital Normal University International Culture Building Design
首都師範大學國際文化大廈
- 060 The Institute of Architecture & Engineering -Shenzhen University
深圳大學建築工程學院
- 082 Science & Technology Building, Shenzhen University
深圳大學科技樓
- 092 The teaching building of The Sculpture Department of Sichuan Fine Arts Institute
四川美術學院雕塑系教學樓
- 100 China Executive leadership Academy · Pudong
中國浦東幹部學院
- 108 Planning of the campus of Tongji University (headquarter)
同濟大學校園 (本部) 規劃
- 118 Dongguan Songshan Lake Productivity Promotion Base Academic Communication Center
東莞松山湖生產力促進基地學術交流中心
- 126 Nanyang College in Wuxi
無錫南洋學院
- 132 Suzhou Industrial Park Vocational & Technical College Complex Teaching Building Design Description
蘇州工業園區職業技術學院綜合教學樓
- 146 Anhui International Nursing College
安徽國際護理學院
- 156 Shenyang Jian Zhu University New Section
沈陽建築大學新校區



大學
College



Function: Education facility
Site area: 208 499.2 m²
Building area: 3 971.3 m²
Total floor area: 9 958.6 m²
Stories: 5FL
Structure: Reinforced concrete, Steel
Ext. finish: Exposed concrete
Photographer: Lee joong hoon

功能: 教育設施
占地面積: 208 499.2 m²
建築面積: 3 971.3 m²
總樓層面積: 9 958.6 m²
樓層數: 5 層
建築結構: 鋼筋混凝土, 鋼
外部飾面: 露石混凝土
攝影: Lee joong hoon

College of Arts Building, Paichai University

培才大學文科學院

The building plan houses the various forms of how the exterior meets the interior, and how people come, gather, and disperse in generally nature-friendly spaces. First of all, by lifting college of music, college of fine arts and college of architecture above grades, the ground floor (deck floor) where pedestrians access the building was solely reserved for gathering space as students, teachers and staffs alike. Music practice room and stair room are designed to be naturally filled with light. By externalizing the main lobby, the interior could actively engage the exterior and in itself remain minimized and compact for efficient energy use. Such the nature-friendly and society-friendly spatial composition is aligned with Korean socio-cultural traditions. In such place as deck space, all the user groups from constituent colleges gather, discuss, and play, enhancing cohesiveness and bonds in identifying themselves as members of department of Arts.

The design of college campus especially in determining axis and spatial composition has been greatly influenced by frame of Western traditional architecture, which today's university architecture will no longer tolerate. I, as an architect, embarked on the design process with firm belief that future university planning should correspond with the regional conditions characterized by traditions, and culture, and meet to timely needs of changing education.

In close look into the design, the first feature that comes to attention is the building's shape which reflects the existing landscape; the lateral extension mirrors the planar nature of the land and the vertical uprising through inner movement along central stairs, and ramp assimilates the landscape that arises from the main gate. The level changes of the building have direct relations not only with building shape but also with functions. The building composition along the rising landscape is divided into ascending parking, pavement, piloti space which can be accessed from ramp or bridge, and upper building above these elements. These features harmonize with the surrounding without additional foundation and landscaping works. Piloti structure pavement deck induces unhindered pedestrian flows, provides space for short rest, and broadens views towards scenic mountains as the backdrop of the building.

The shape and plan of the building started from 'construction' point of view, which have veered towards 'mirroring landscape specifics'. Likewise, when deciding main building materials and detailing, we drew conclusion in assimilating the surrounding.

Thus, on the exterior wall that angles with the land shape, the exposed concrete is used, where the walls are fenestrated only with narrow and long windows to keep the sense of introvertedness. The curtain wall system is applied on the wall facing inner courtyards. This enclosure harmonizes with functional layout within. Along the exterior wall are placed common areas such as lobby and corridor where narrow windows screen light by poetic intervals in calm and sacred atmosphere. The majority of rooms face inner curtain wall, benefiting from its light and ventilation to create refreshing classrooms. We have increased spatial potentials by highlighting the contrast between dark, yet poetic corridors, and adjacent common areas.

大樓的設計方案結合了多種元素，包括內外結構的銜接、行人與空間場所的關係。通過先把音樂學院、藝術學院和建築學院的地面提高，從而增加大樓入口處的空間，為學生、教師和員工提供更廣闊的路面空間。設計練琴房和走道空間時，充分考慮自然光線的利用率。通過將主廳外化，使得內外空間自然銜合，內部空間結構小巧緊湊，充分有效地利用了空間資源。這一自然和諧、面向社會的空間結構表達了韓國社會文化習俗與傳統。而在地面一層，來自各學院的成員、團體會聚一堂，在此縱情探討學術問題，增強師生感情與聯系，成為文科院系的獨特風景。

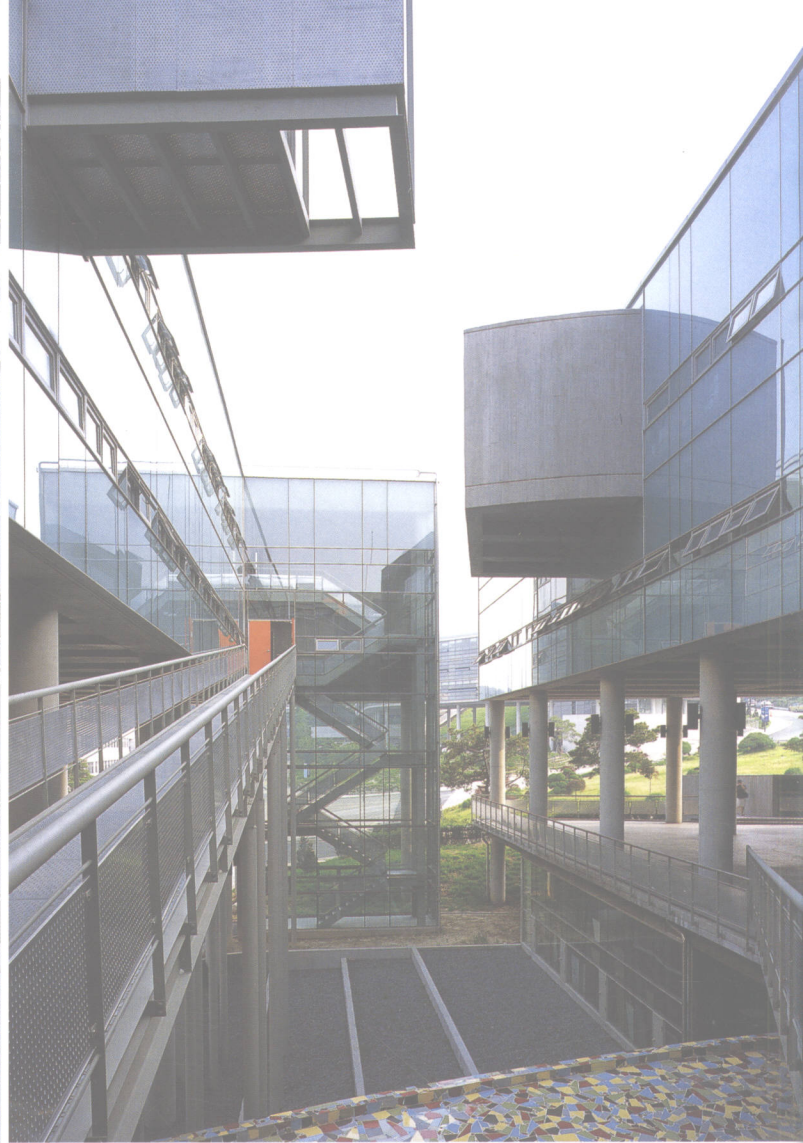
校園的設計在軸線和空間構造方面極大地採用了西方傳統建築風格，在現代大學建築中並不常見。作為一名建築師，自己在設計時，就把未來的大學建築規劃為傳統文化特色與多元化發展的教育需求相結合的作品。

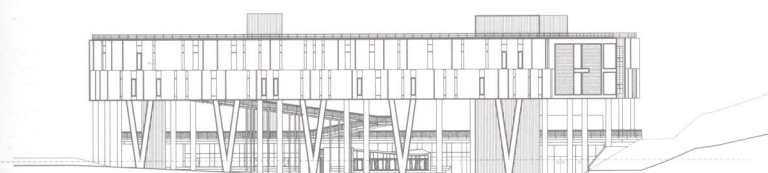
細看設計，首先會被大樓的形狀吸引，大樓的形狀與地形結合的較好。側面延伸面與景觀環境和樓內中央樓梯垂直線延綫相互映照；斜坡則融合了從主校門開始的地形。大樓的水平變化與大樓的形狀和功能都有着直接的聯

系。隨著自主校門開始伸展的地形，大樓的構造可分為地勢逐漸上升的停車場、人行道、與斜坡或橋連接的底層架空空間，以及高踞於這些建築元素之上的大樓建築。無需附加的基礎工作或地形修飾，使該建築自然地與周邊環境相融合。底層架空結構的人行道可以容納如潮人流，提供短暫休憩的場所，並為行人開闊了視野；行人駐足于此，可以遠眺作為大樓背景的群山風景。

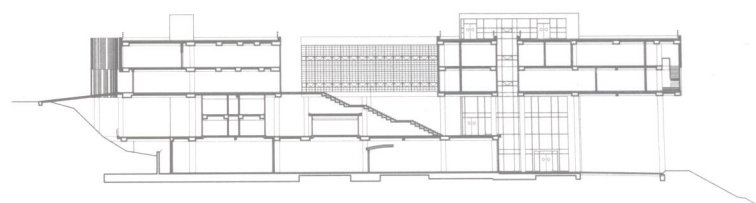
大樓的形狀和平面的設計是從建築學的角度出發的，旨在“反映地形特點”。與此相同，決定主要的建築材料等相關細節時，要考慮周邊環境因素。因此，與地面形成夾角的外牆採用露石混凝土，牆面僅開設狹長窗戶，營造一種內向的氣氛。面對內部庭院的是玻璃帷幕牆。封閉的結構與內部的功能布局交相輝映。沿着外牆是普通功能區域，如大廳、走廊。狹窄的窗戶以一種詩意的間隔過濾光綫，營造一種寧靜而神聖的氛圍。教室多數面對朝裏的玻璃帷幕牆，從而吸收足夠的光綫和通風，形成教室中清爽的環境。通過突出昏暗而富有詩意的走廊與相鄰的普通功能區域的對比，大大增加了空間潛能。



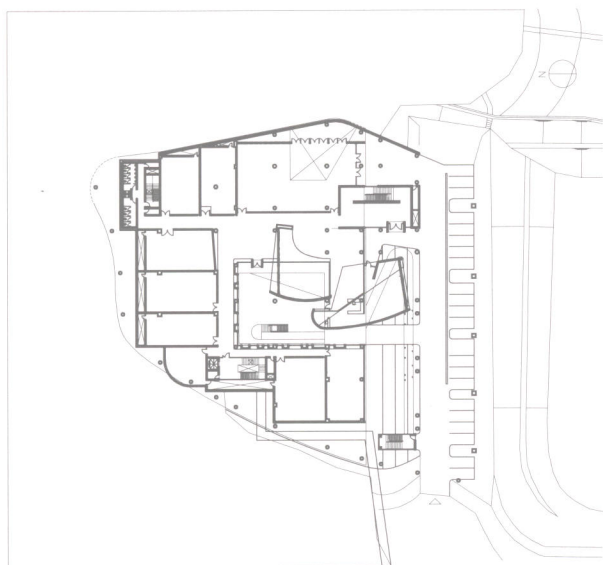




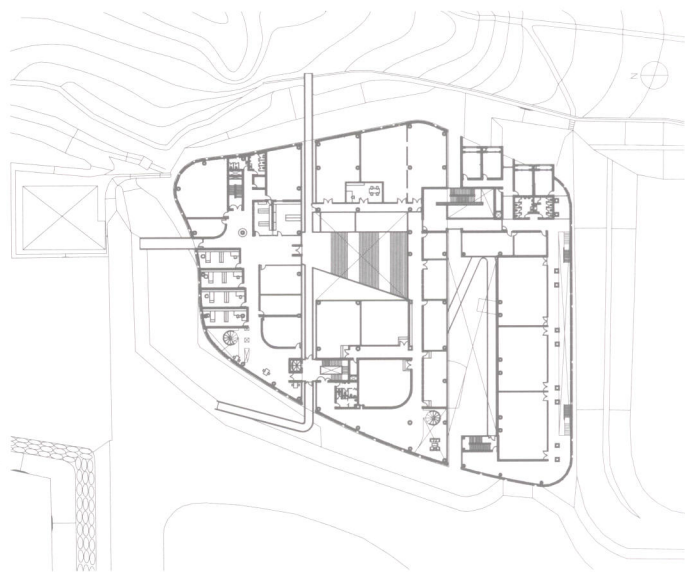
Elevation
立面



Section
剖面



First floor plan
一層平面圖



Fourth floor plan
四層平面圖

Architect: Jensen&Maw Architects
Design Team: Mark Jensen, Mark Macy(principals), Frank Merritt(project manager), Dean Orr, Chia—Yu Yen(project team)
Engineering Team: Jeffrey Weber and Associates(structural), Guttman&Blaevot(mechanical)
Construction Team: Oliver & Co
Lighting Consultant: Jensen&Macy Architects
Photographers: Richard Barnes, Mark Jensen

建築師: 延森與梅西建築事務所
設計團隊: 馬可·延森, 馬可·梅西(負責人), 弗蘭克·梅裏特(項目經理), 迪安·奧, 顏佳瑜(方案組)
工程組: 杰弗裏·韋伯事務所(結構), 古特曼與布萊維特(機械)
施工單位: 奧利弗公司
照明顧問: 延森與梅西建築事務所
攝影師: 理查德·巴恩斯, 馬可·延森

CCA Graduate Center, San Francisco

加州藝術學院研究中心, 舊金山

Program & Requirements

A dilapidated 10,000 square foot warehouse was converted into individual studios for fine art (about 929.03m²) students at the California College of the Arts, located at the street opposite to the existing college. The challenge was to economically transform the dark building into daylight-filled art studios. earthquake resistance, accessibility, and building services were all to be addressed while considering the impact of this visible corner site.

The school has only a 10 year lease at this place So it needs the improvements at a limited budget. The existing building, however, needed to be rebuilt. It was only 8 months lease the beginning of the school year to a very aggressive schedule.

Ideas&Design objectives

Translucent Elevation form

A new facade of corrugated double-wall polycarbonate was used as cladding for the entire upper portion of the facade. This translucent material became the dominant element of the building. Its translucent quality varies with day and season. Seemingly opaque during the day, it becomes a mirror at dusk and a glowing light box at night. This polycarbonate skin has the practical advantages of diffusing natural light entering the building while being easy to install over the existing wall framing. In addition, its insulating qualities permitted a large portion of the envelope to be glazed and still met energy conservation requirements.

Prefabricated Restrooms

To meet the needs for new ADA accessible bathrooms, the Architects worked directly with the Kohler Company to develop an entirely prefabricated restroom. The restroom built inside a standard shipping container was then shipped across the country on a flat bed truck, lifted with a crane, and 'plugged-in' to pre-prepared water, sewer, and electrical connections on site. All this was accomplished at less than the cost of traditional site built facilities and its placement outside the building envelope maximized available floor area for studio use.

Project Description

Utilitarian Materials

Taking cues from the industrial character of the neighborhood, and the requirements for an interior able to stand up for student art studio use, all the building materials are tough and utilitarian. The existing concrete slab is left exposed, unfinished plywood wraps All the interior surfaces, and corrugated cement siding clads the lower portion of the exterior facade. These industrial materials are reinterpreted and carefully composed, taking on a new significance inside this art college.

Building Organization & Section

The interior is organized in a very simple and rational way. Ten by

twenty foot (about 3.04×6.09m) individual studios are organized around hallways that surround the building and widen at the ends of the building thus providing common display and gathering areas. The plywood walls end at half of the height of the interior space, aligning with the level of the luminous clerestory at the perimeter walls. This stacked section gives drama the simple plan. Each artist is to be given a private introspective volume of space in this singular building.

規劃與要求:

一座929.03平方米的破舊倉庫被改造為加州藝術學院美術系研究生所用的私人工作室。場地處於現在學院的街對面,本設計的難點在於比較經濟地將一座黑暗的建築改建成一座陽光充足的藝術工作室。抗震性、可達性和建築服務問題均需要妥善處理,並同時考慮到這個街角場地成為發展中的學院的標志建築可能會產生的影響。學院租用此處僅僅10年,所以改建預算是有限的。然而,現有的建築幾乎全部需要重建,並且從租約簽訂到忙碌的新學期開學只有8個月時間。

觀念與設計目標

半透明的立面

建築正面的整個上半部分為波紋狀聚碳酸酯的雙壁包層。此種半透明材料是整個建築的主要構件。它的特性隨著季節和時光而變化,簡直變幻莫測。白天看上去昏暗,黃昏時則成了一面鏡子,夜晚則成了泛光的燈箱。聚碳酸酯外牆的實用優點是能夠漫射進入建築裏自然光,同時可便捷地安裝在原有的牆構架上。另外,其隔熱性能使得包層的大部分透光的同時仍能滿足節能的要求。

預制洗手間

為了滿足新型ADA可卸洗手間的需要,建築師們直接與科勒公司合作研製了預制式洗手間。廠方將洗手間建在一個標準的航運集裝箱內,然後用平板卡車裝運,跨越國境,再用起重機提升就位,在現場連接上預先設置的水、污水和電源接口。所有這些比

傳統的現場設施施工的成本要低,同時不占用建築內空間從而使面積利用率最大化。

工程概述

實用性材料

考慮到比鄰建築的工業特性以及滿足學生藝術工作間的內部空間要求,所用建築材料均硬值并實用。已有的毛坯混凝土板層外置,所有的室內表面由半成品膠合板包裹,波紋狀的水泥板覆蓋了外立面的下半部分。這些建築材料被重新詮釋并加以精心構造,賦予這所藝術學院以新生。

建築組織結構

室內結構非常簡潔合理。門廳周圍是3.04×6.09英尺的個人工作間,環繞着整個建築,同時在建築末端變寬,作為公共展示和集結區域。膠合板牆的高度為室內高度的一半,與周邊牆上明亮的天窗水平對齊。正是這種堆砌式結構的工作間為這個簡單的方案增添了戲劇藝術效果。這座單體建築賦予每位藝術家一個充斥着藝術之光私人遐想空間。







