

MAOYI KUANSHI DAPEI JINGDIAN

毛衣款式搭配经典



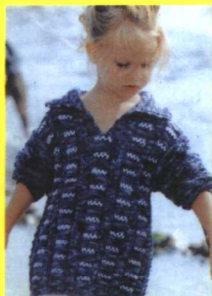
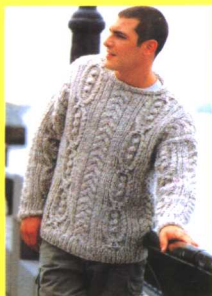
# 5688

新时尚版

囊括往昔毛衣精华  
展示现代毛衣款式  
引领未来毛衣潮流

上海科学普及出版社

洋 洋 编



**图书在版编目 ( C I P ) 数据**

毛衣款式搭配经典5688/洋洋编. -上海: 上海科学普及出版社, 2006. 8  
ISBN 7-5427-3516-0

I. 毛... II. 洋... III. 绒线-服装-编织-图集  
IV. TS941. 763-64

中国版本图书馆CIP数据核定 (2006) 第071709号

**责任编辑** 张帆

**毛衣款式搭配经典5688**

洋洋编

上海科学普及出版社出版发行  
(上海中山北路832号 邮政编码200070)

<http://www.pspsh.com>

各地新华书店经销 重庆瑞琪印务有限公司印刷

开本 889×1194 1/16 印张 7.5 插页 56

2006年8月第1版 2006年8月第1次印刷

ISBN7-5427-3516-0/TS·220 定价: 36.80元

TS941.763-64

8

:2

# 毛衣款式搭配经典

# 5688

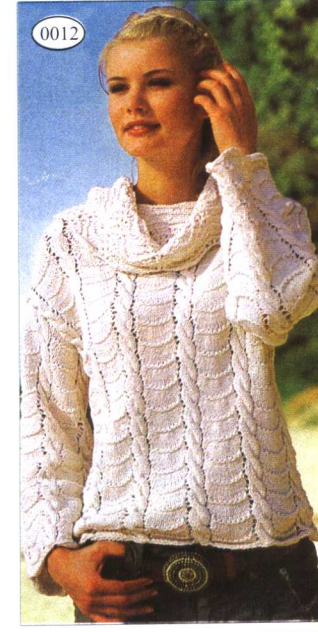
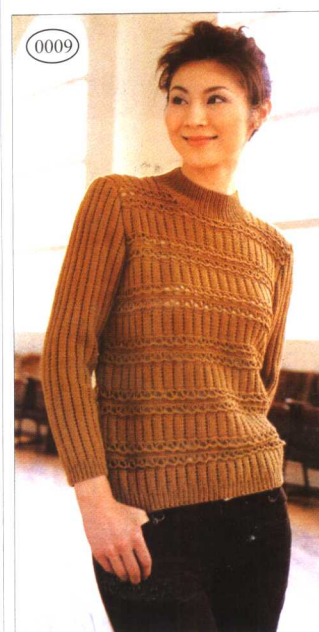
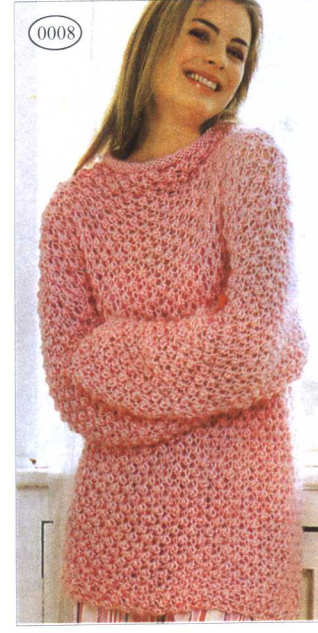
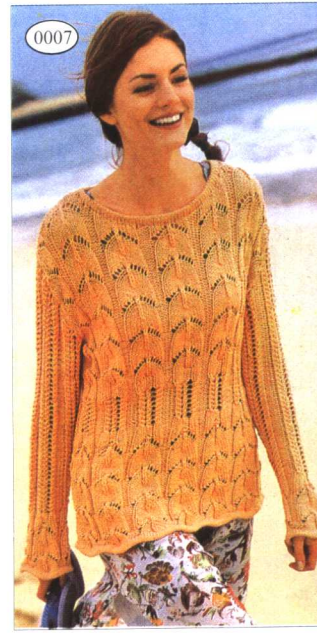
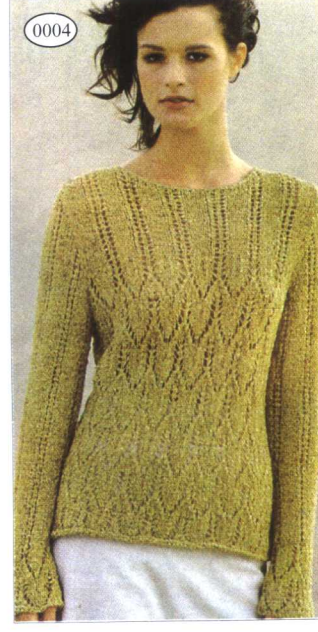
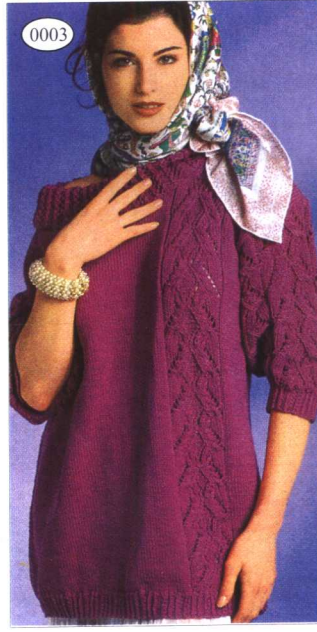
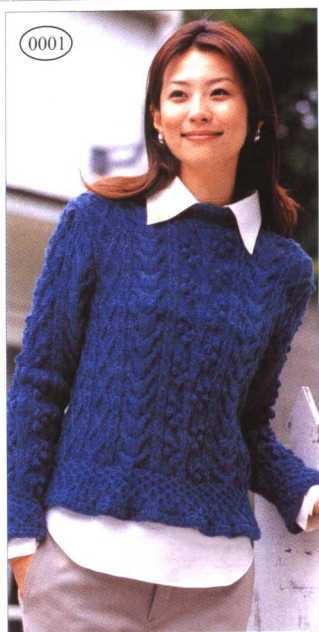
## 目录

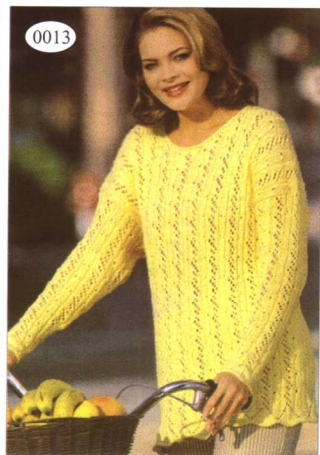
一、女士款式	2
二、女士衣服	42
三、男士款式	44
四、男士衣服	56
五、儿童款式	58
六、儿童衣服	74
七、儿童双人	80
八、女士披肩	82
九、男女双人	86
十、女士套裙	90
十一、编织花样	100
十二、衣领袖边	106
十三、拖鞋实例	107
十四、休闲帽子	108
十五、时尚提包	109
十六、手套围巾	110
十七、精彩刺绣	111
十八、经典图案	112
十九、宠物饰品	114
二十、实用饰品	115
二十一、编织方法	116
二十二、针法说明	227

洋洋 编

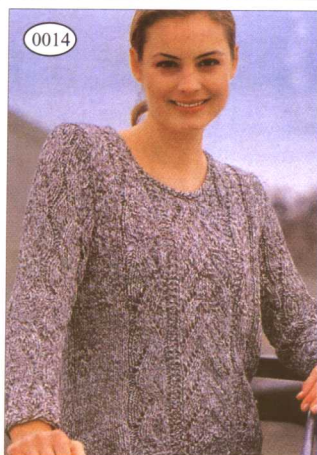


上海科学普及出版社





0013



0014



0015

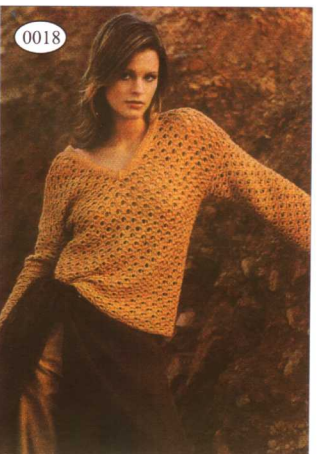
配带流苏的宽松型休闲毛衣，  
深蓝色格子百褶裙，古典韵味  
浓厚，展现居家女性的亲切温和  
与柔媚。



0016



0017



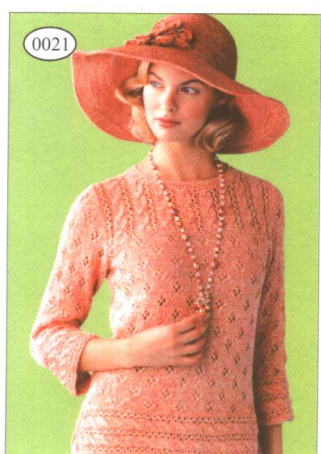
0018



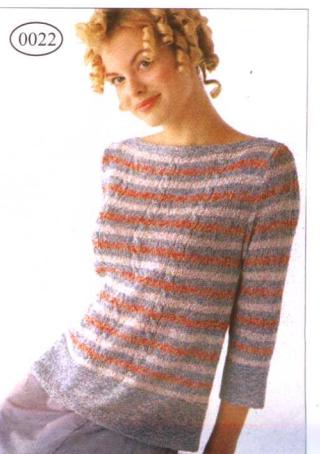
0019



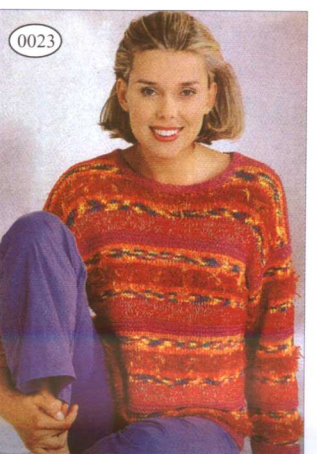
0020



0021



0022



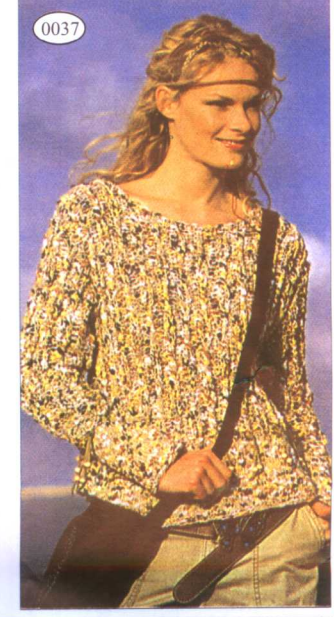
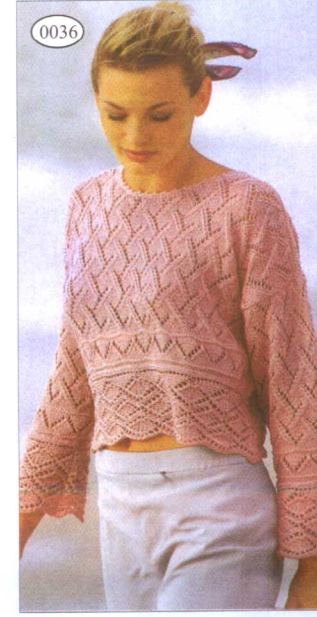
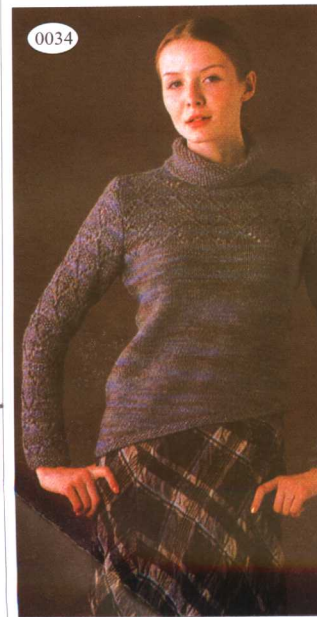
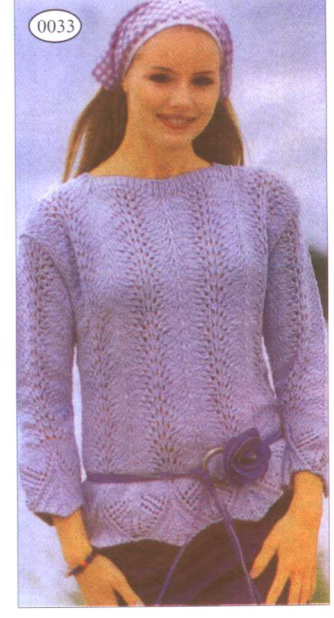
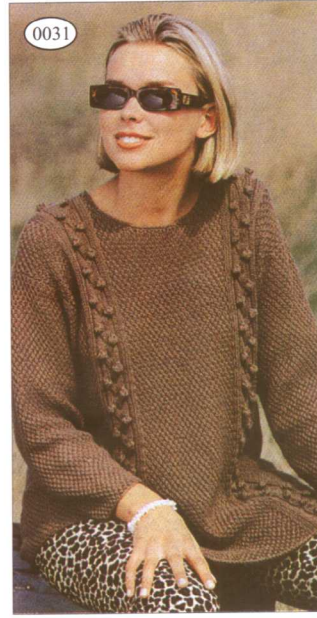
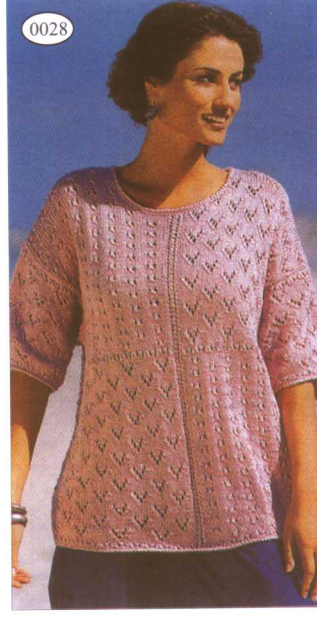
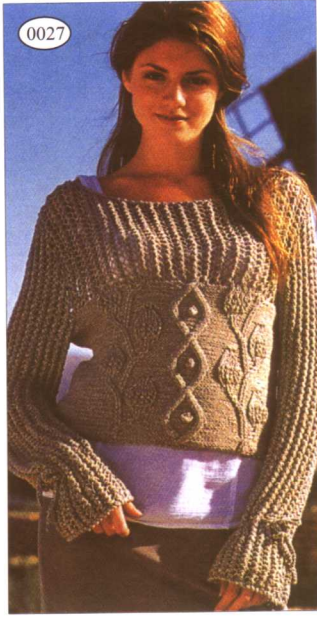
0023



0024

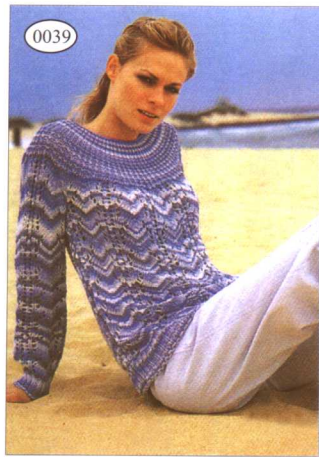


0025





0038

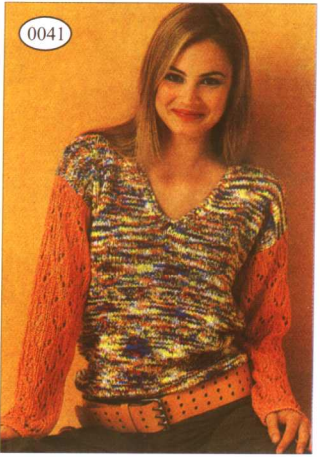


0039

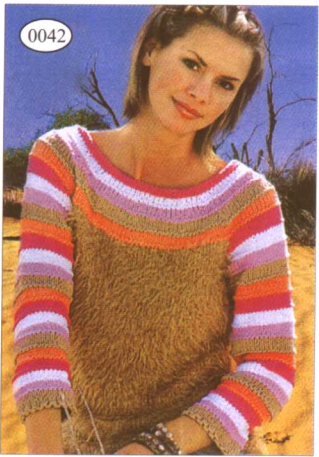


0040

针织桃心领花边上衣搭配带古典花边的裙子，色彩典雅，素净，风格有强烈的复古韵味。



0041



0042



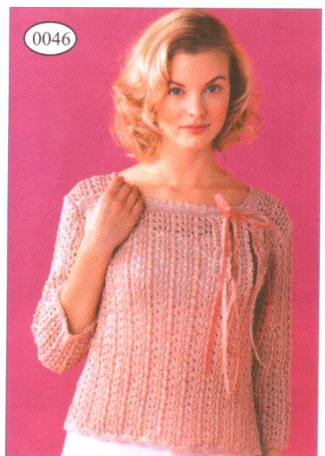
0043



0044



0045



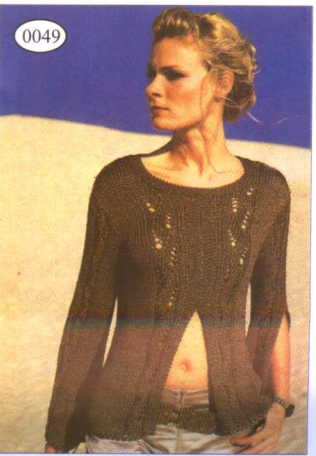
0046



0047



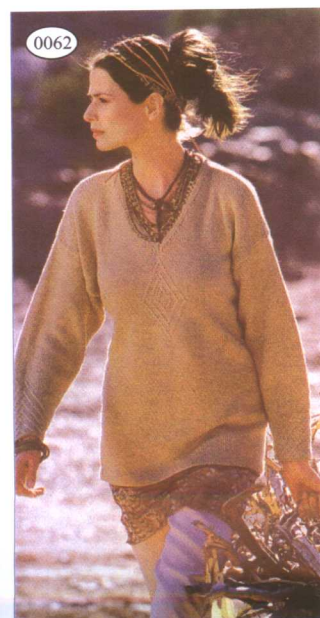
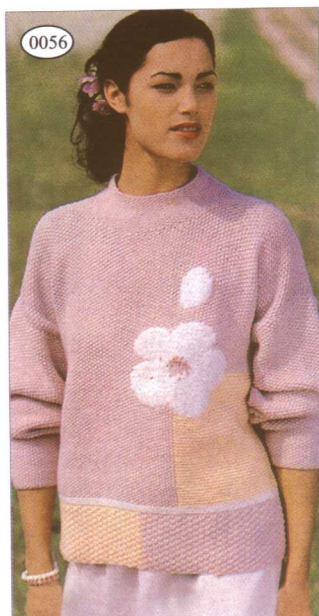
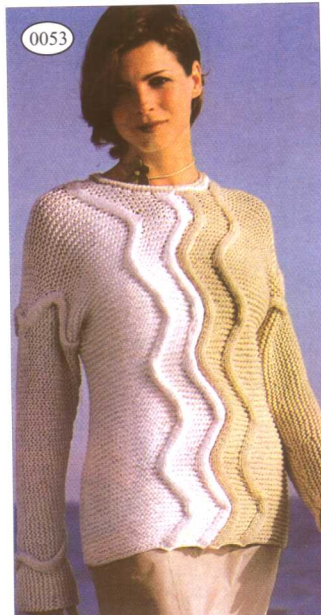
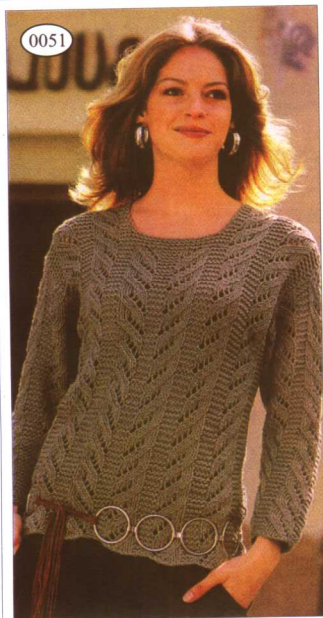
0048



0049



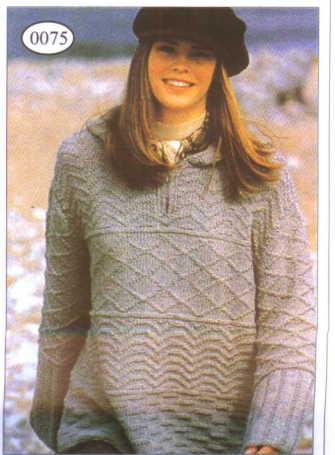
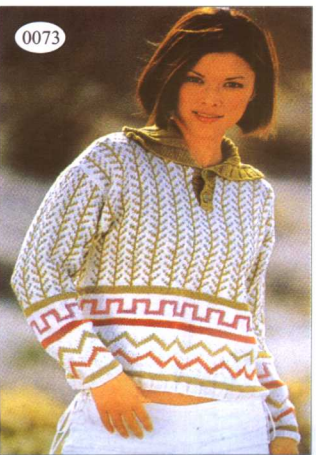
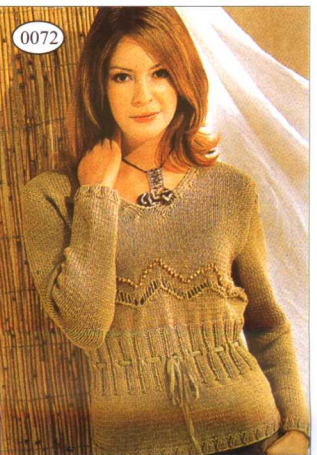
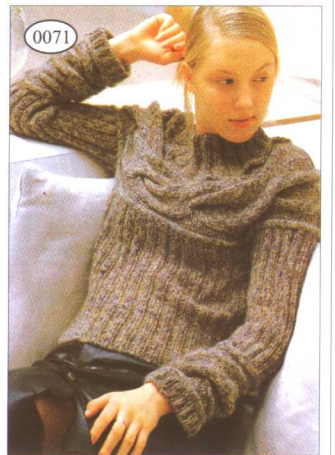
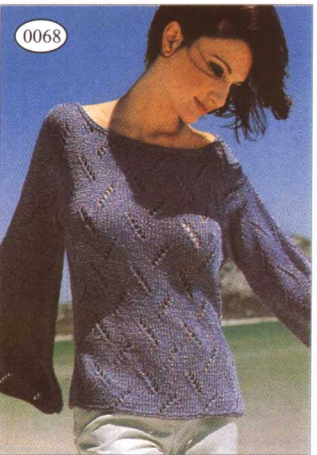
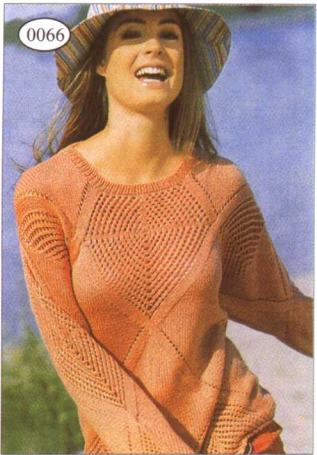
0050

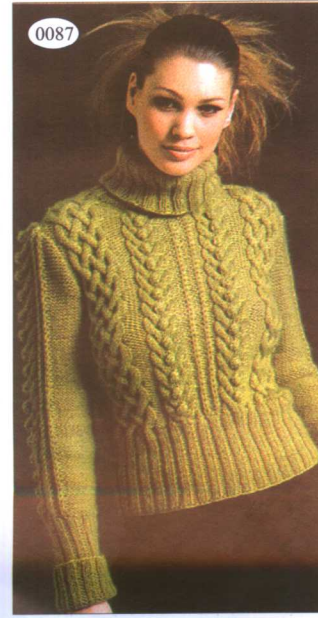
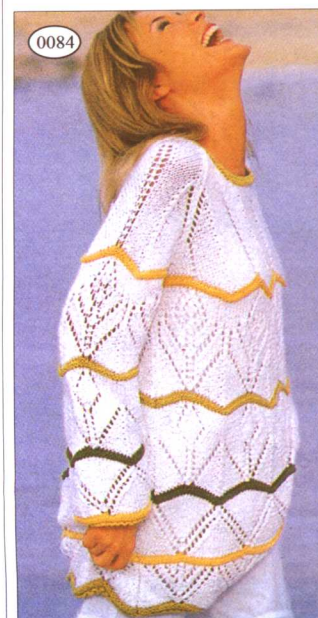
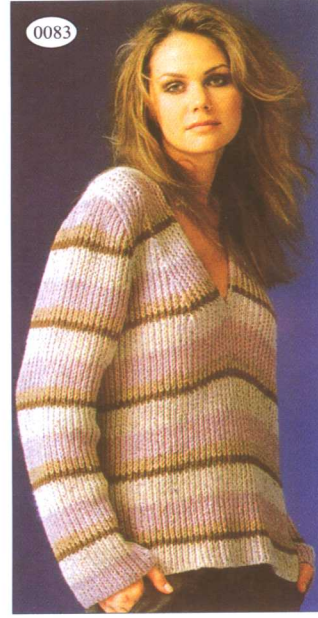
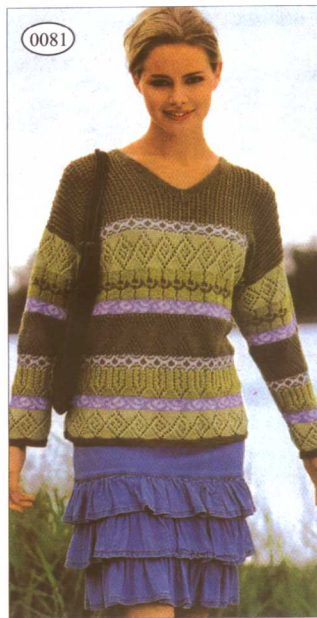
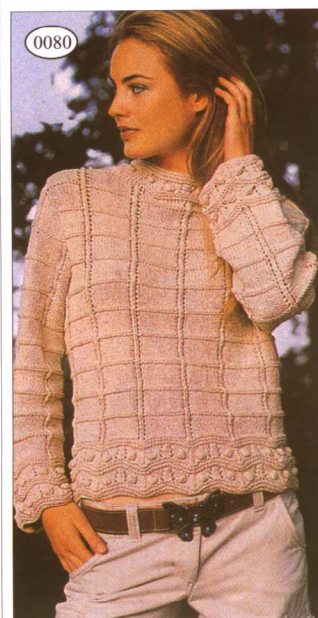
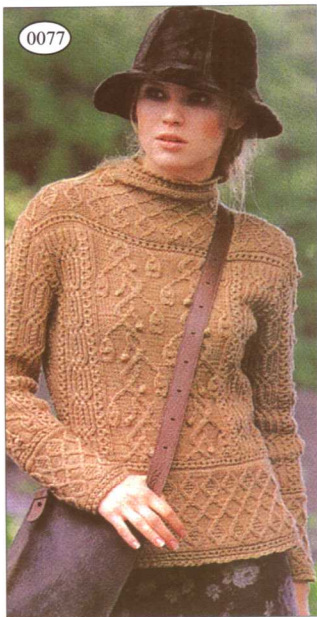
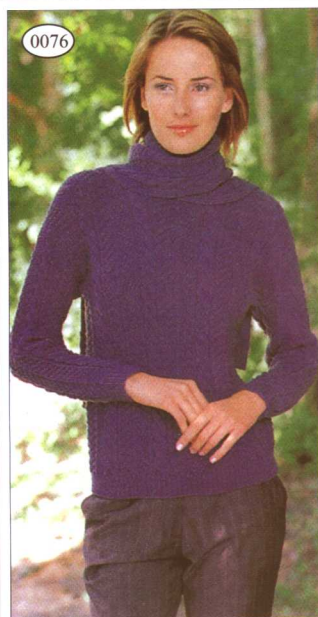


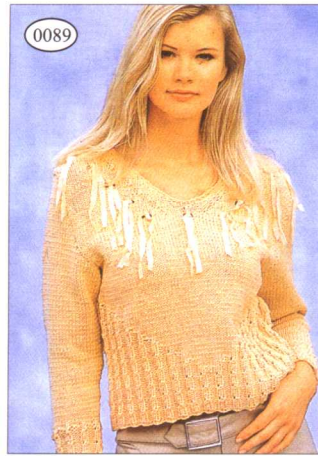




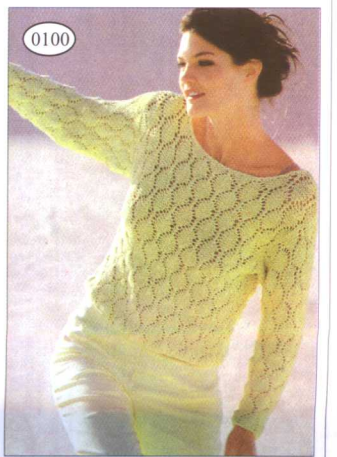
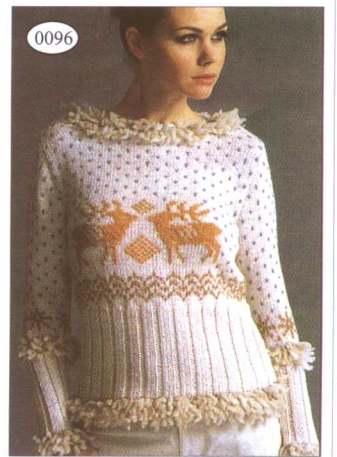
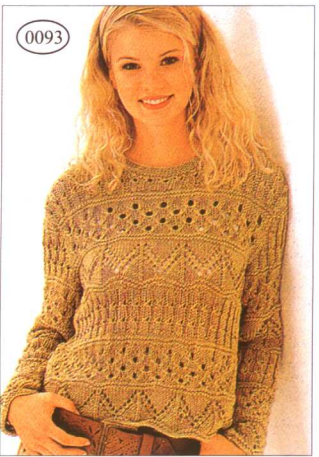
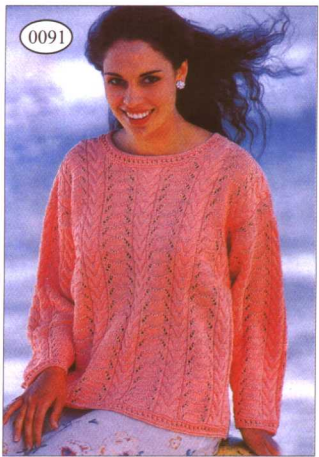
带来大  
闲来秋而  
女装扮天的  
适合成的韵  
成熟味，  
都休这  
稳重的样  
的毛  
衣

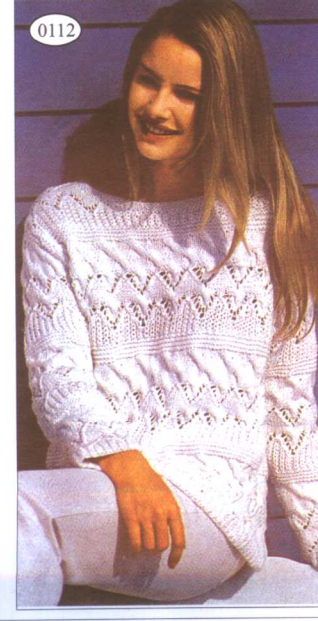
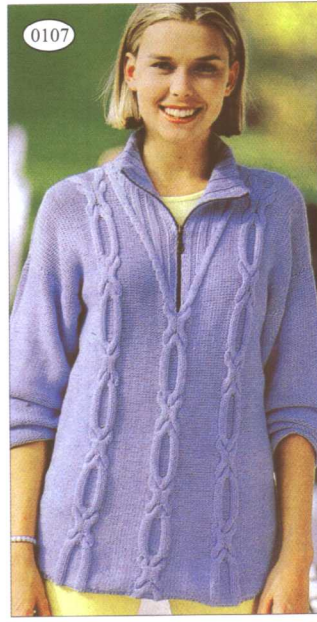
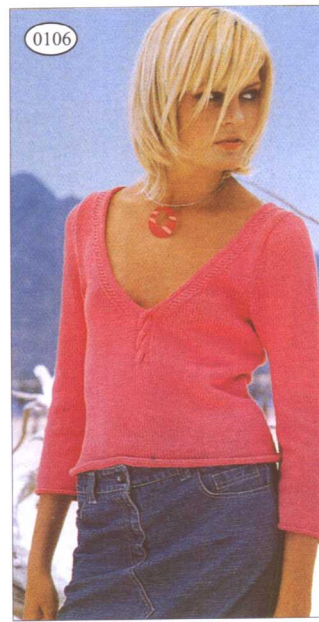
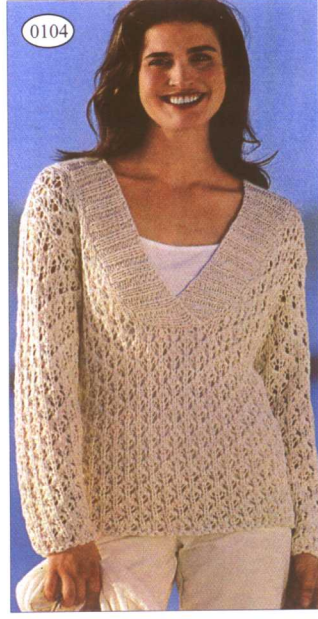
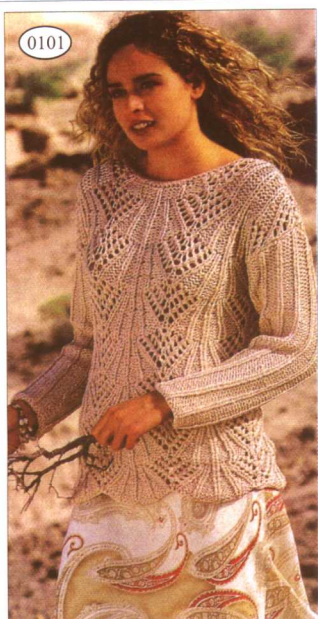


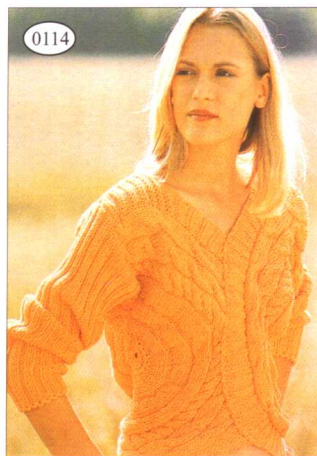
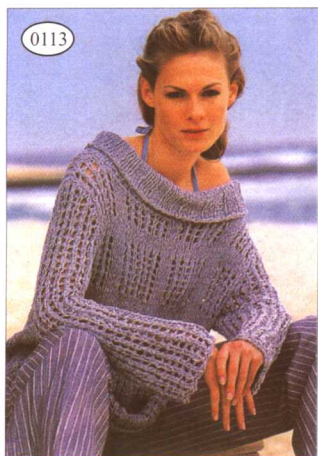




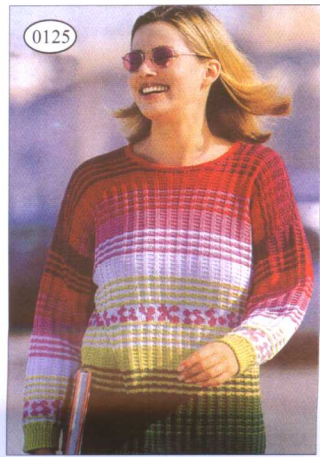
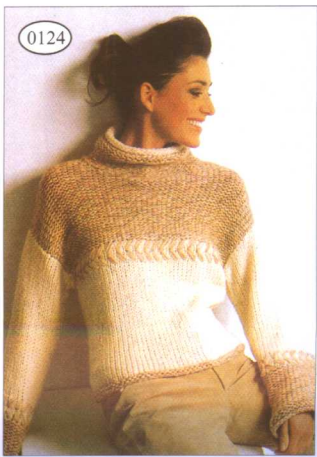
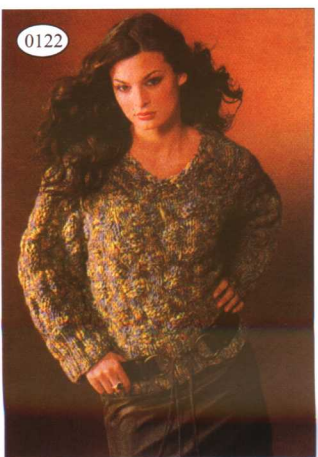
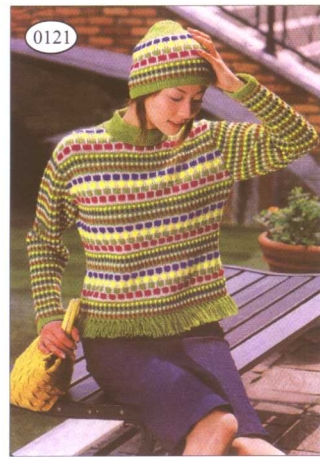
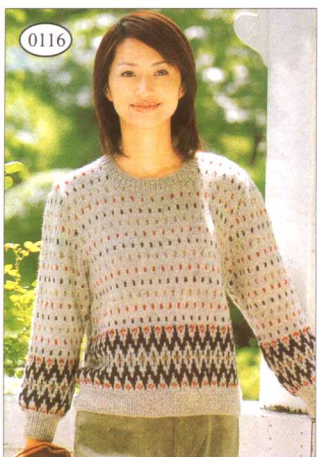
淡紫色给人典雅淑女的感  
觉，简单合身的裁剪非常适  
合年轻女性搭配相同色系  
的深  
色套裙显得非常端庄大方。

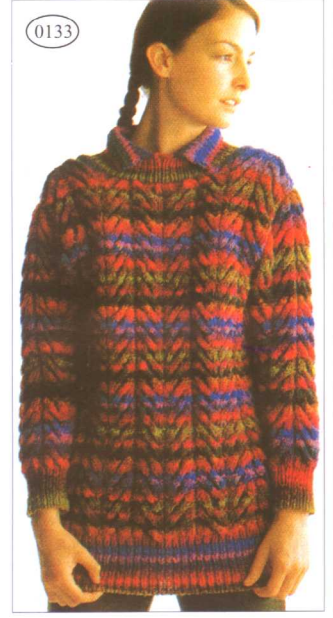
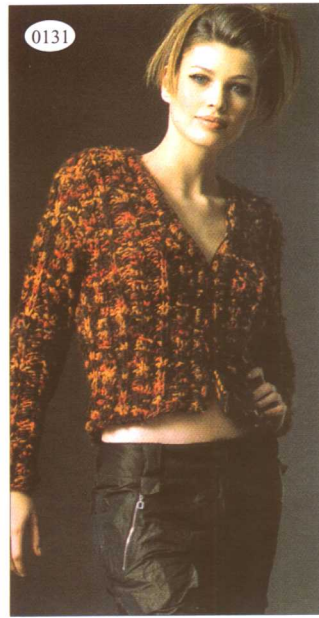
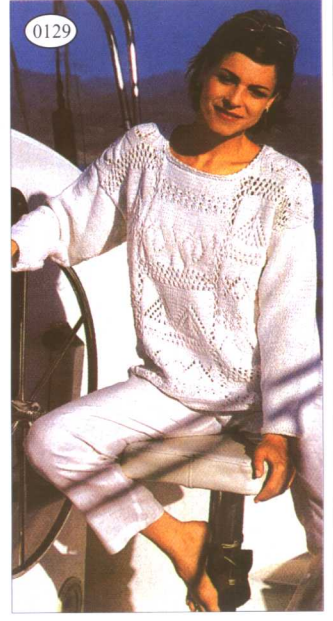


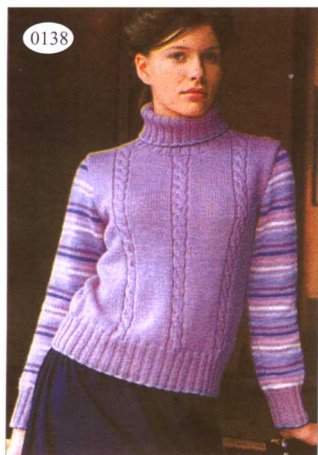




浓，还带有复古的元素，温暖更显得端庄。  
土红色的毛衣休闲味特别，配黑色裙子，温







0138

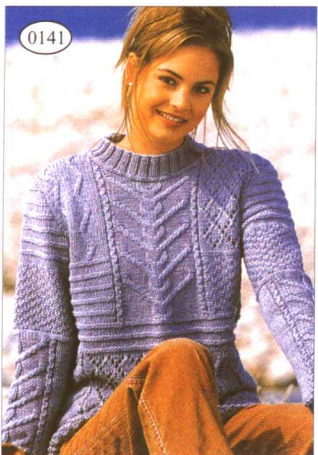


0139



0140

高领灰色毛衣在深秋季节带来温暖，朴实大方。配深色长裤体现都市女性的成熟干练。



0141



0142



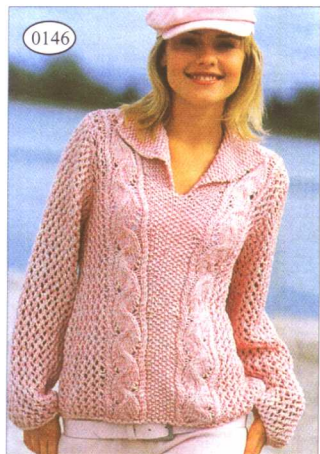
0143



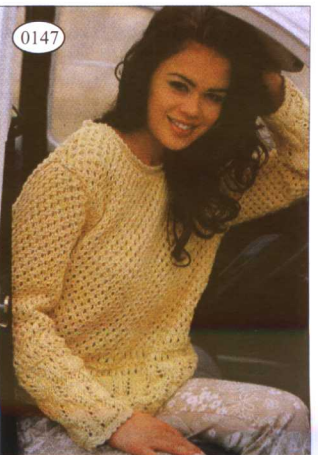
0144



0145



0146



0147



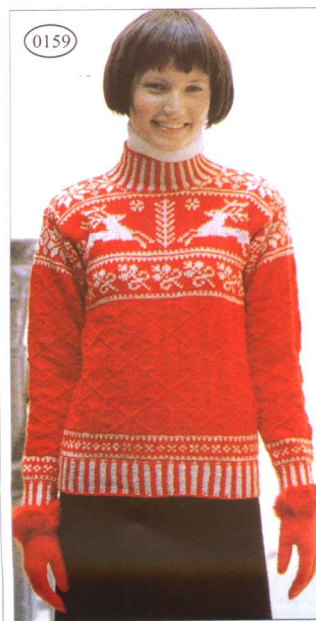
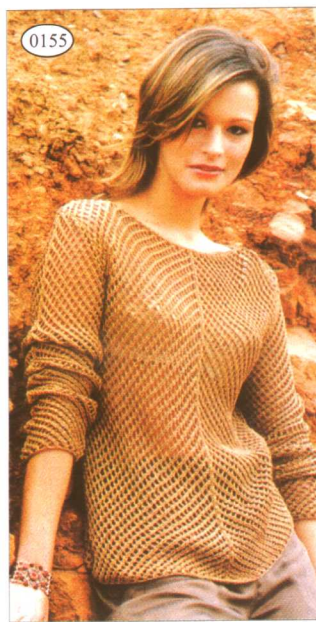
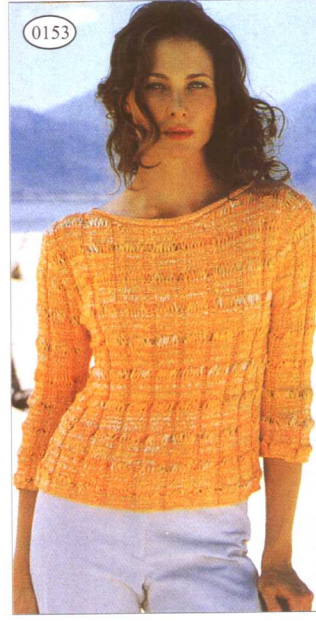
0148



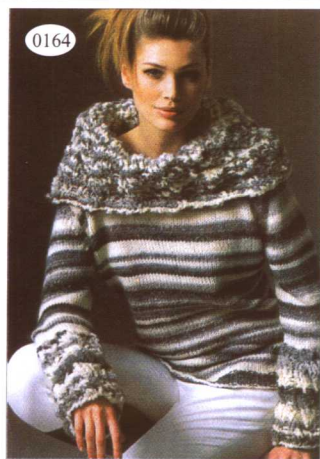
0149



0150







和非常传统质朴大方。来看起  
来和非常传统质朴大方。来看起  
来和非常传统质朴大方。来看起

