



知识很好玩 · 学习不枯燥



超人益智园

连线书

恐龙

数字

英语

拼音

认知

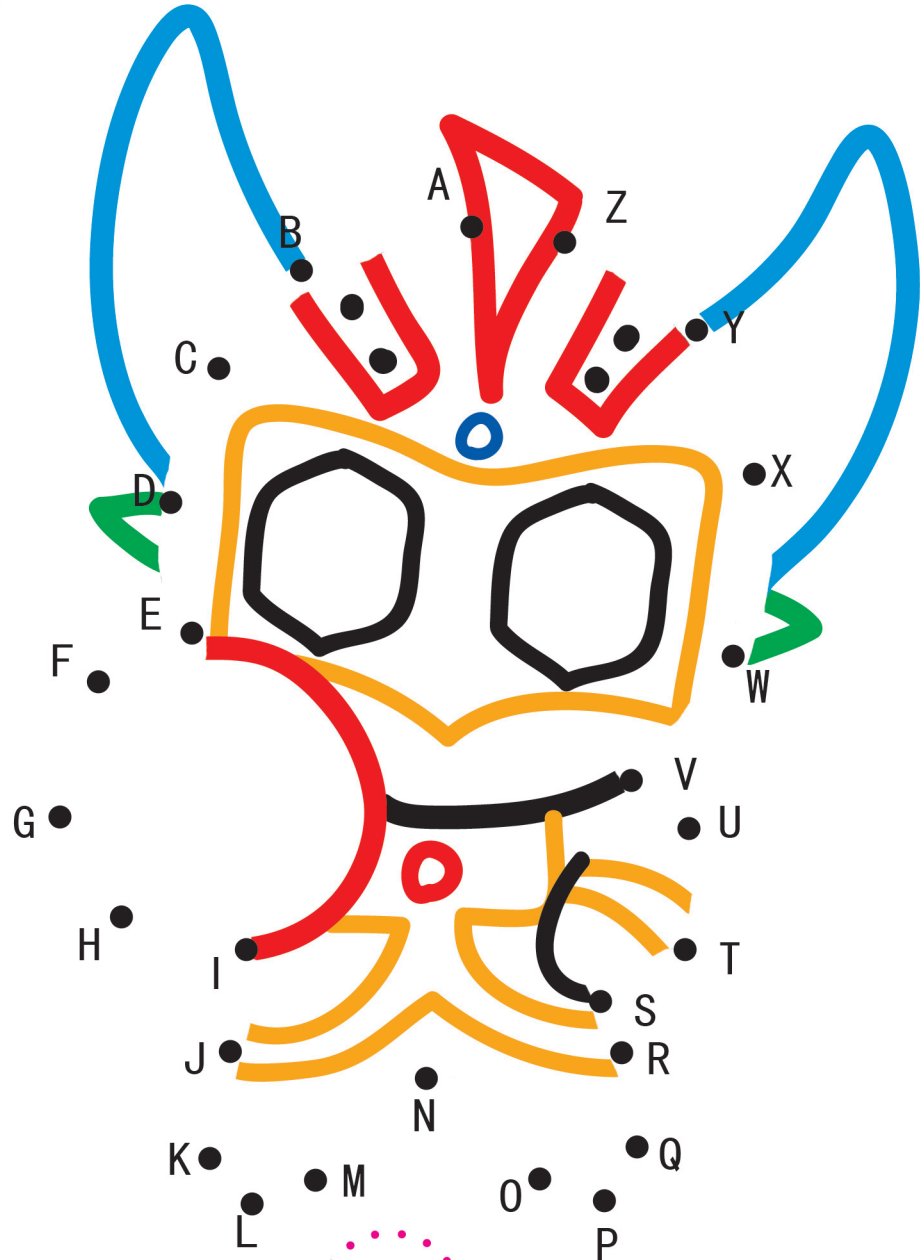
思维

游戏

幼教专家
推荐

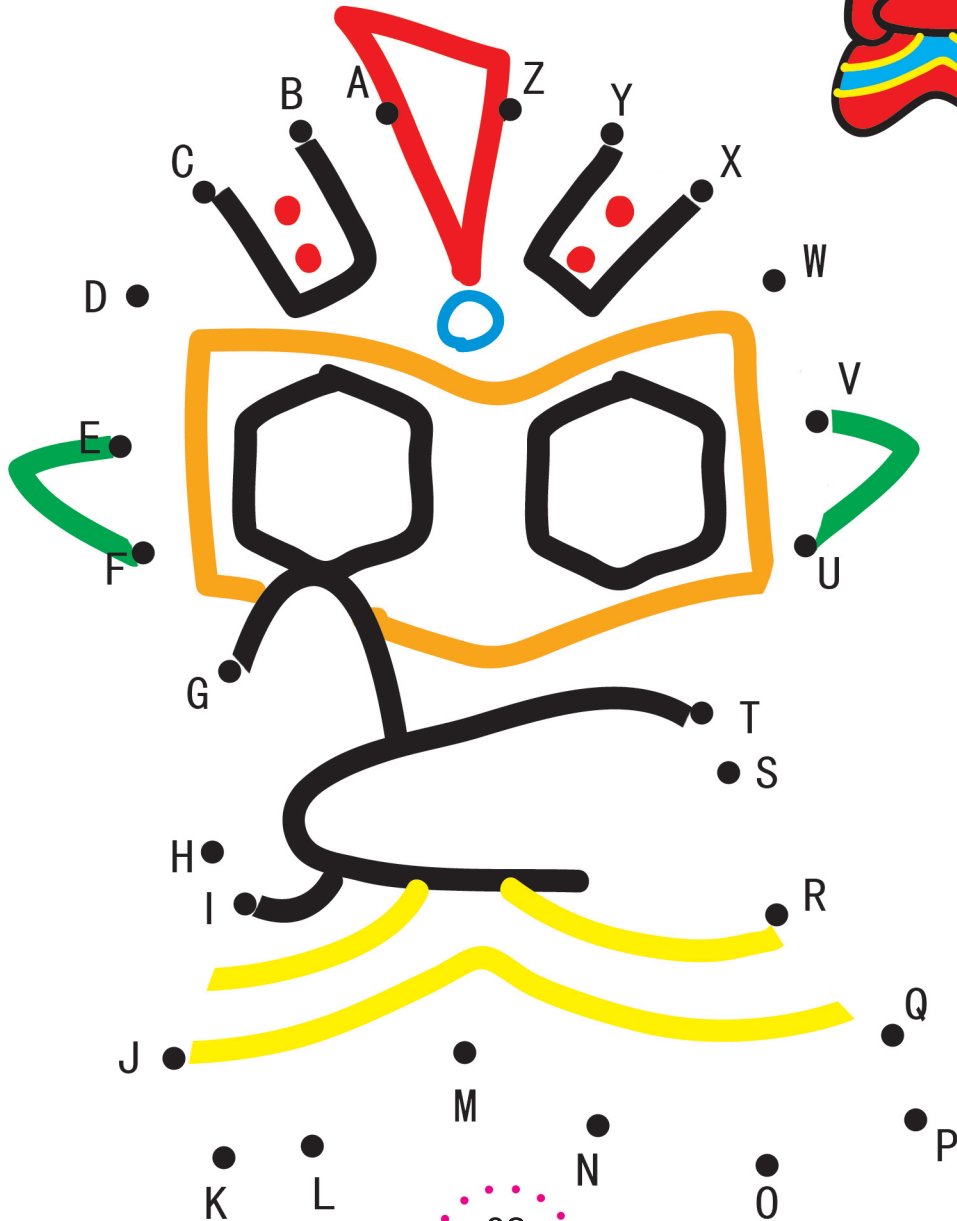


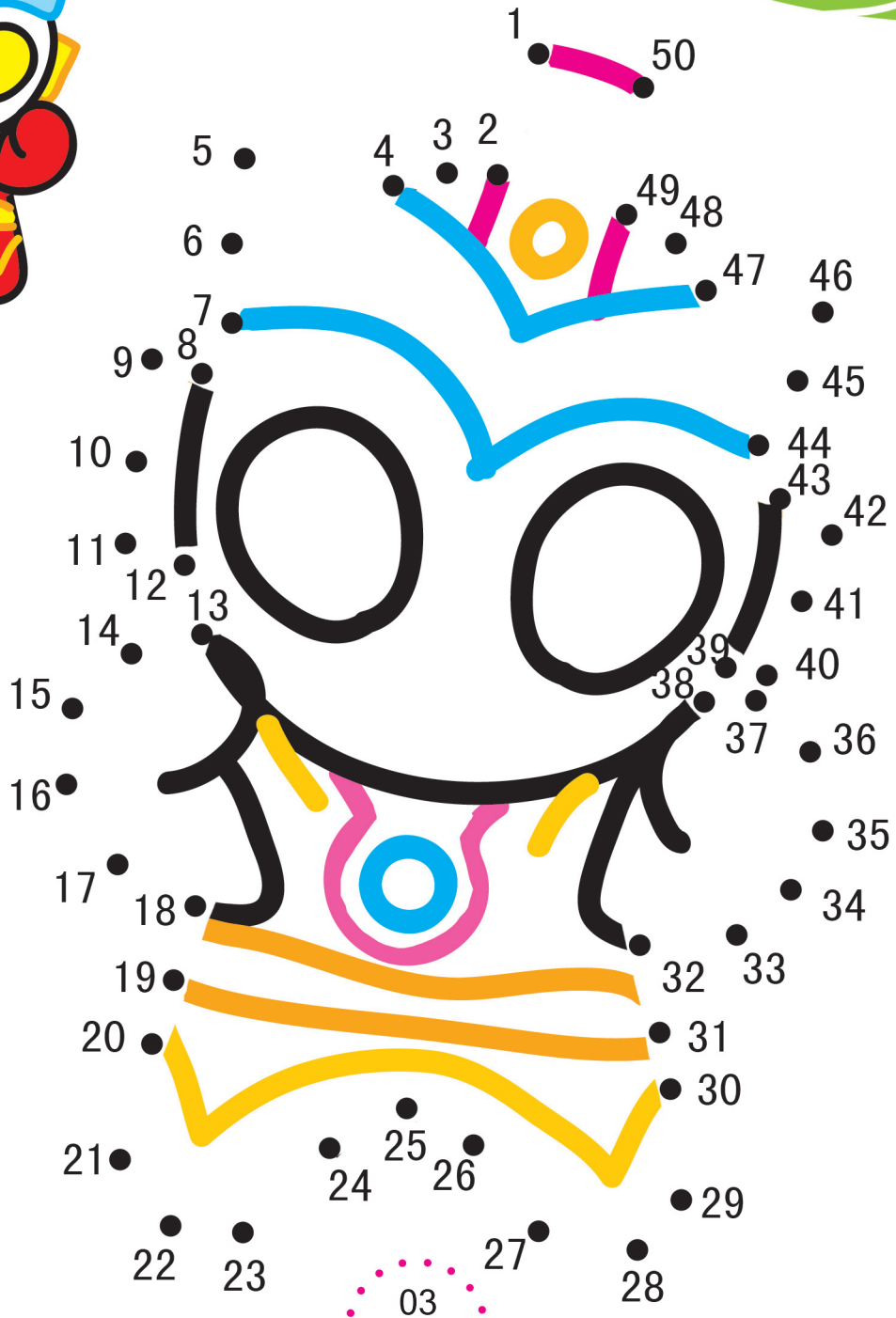
中国书店 1982





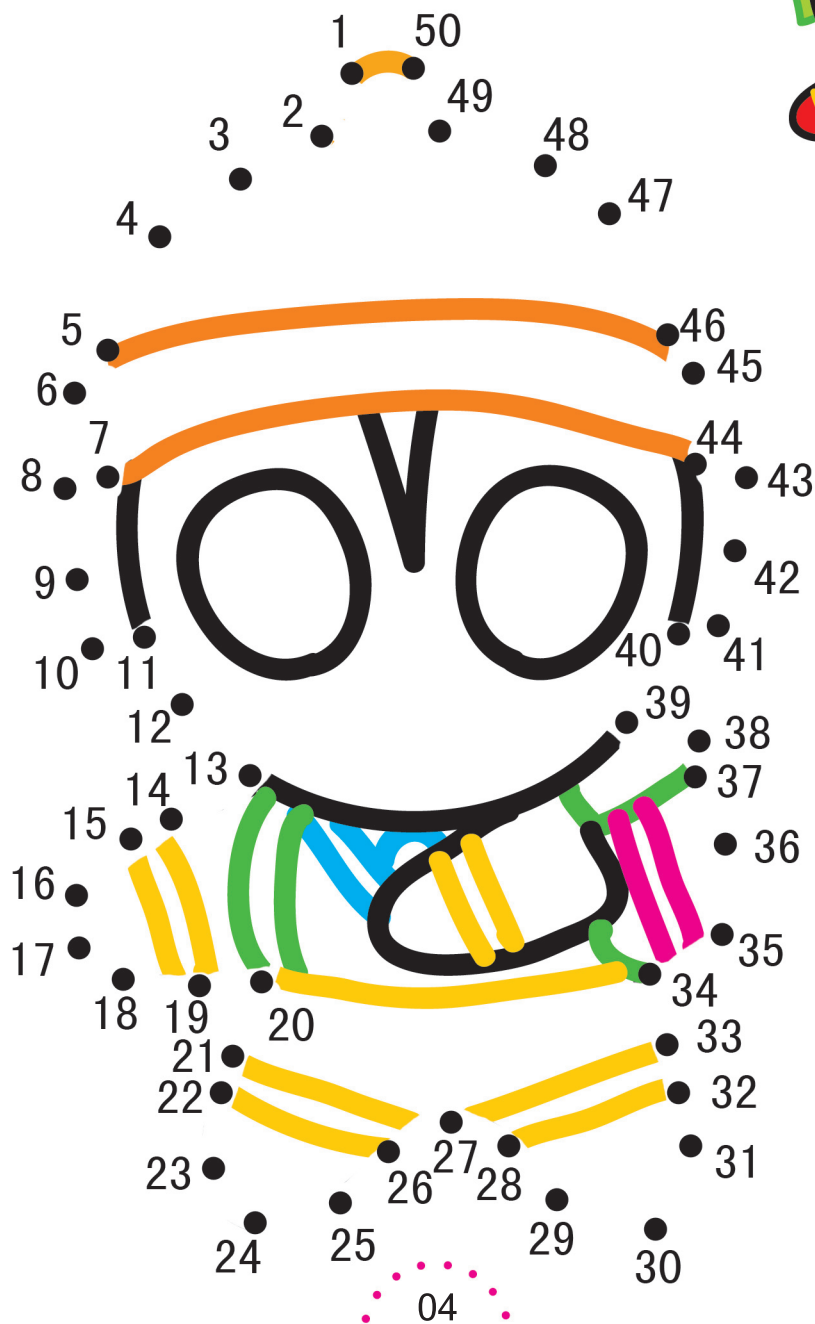
字母
A~Z





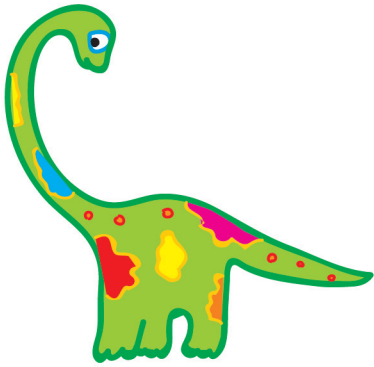


数字
1~50

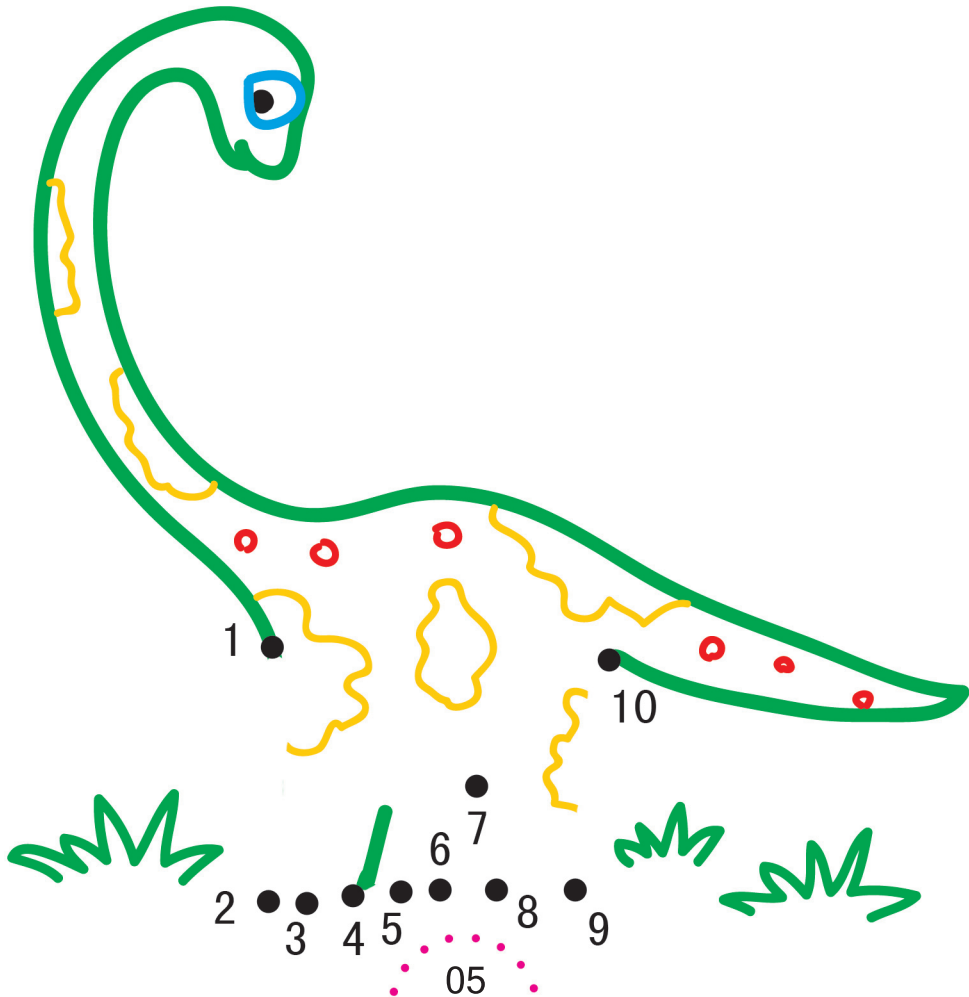




wàn lóng wàn lóng zhēn qí guài cháng bó zǐ xiǎo nǎo
 腕龙腕龙真奇怪，长脖子小脑
 dai qián tuǐ hái bǐ hòu tuǐ cháng yì diǎn
 袋，前腿还比后腿长一点。



wàn	lóng
腕	龙





数字

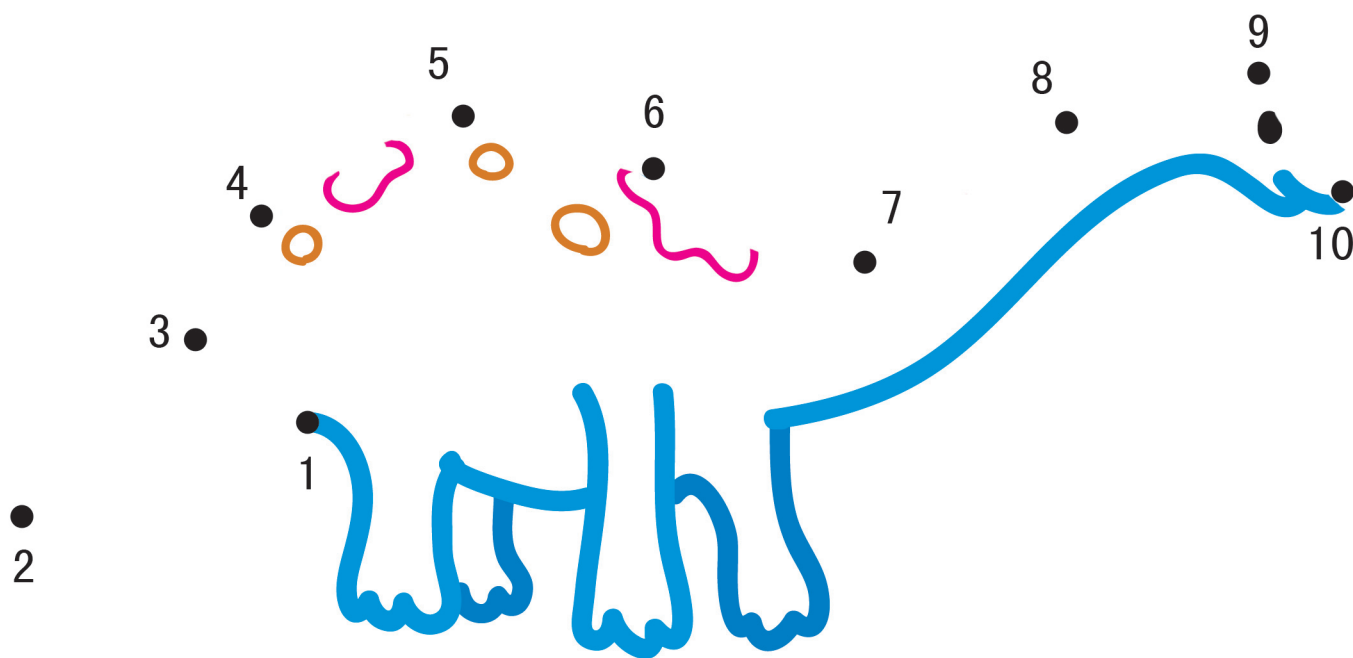
1~10

liánglóngliánglóng hěn hǎo rèn zhǎng zhe chángshēn zi wěi ba
梁龙梁龙很好认，长着长身子，尾巴

xiàngbiǎn zi
像鞭子。

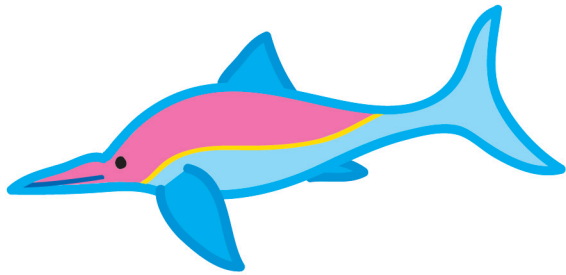


liáng	lóng
梁	龙

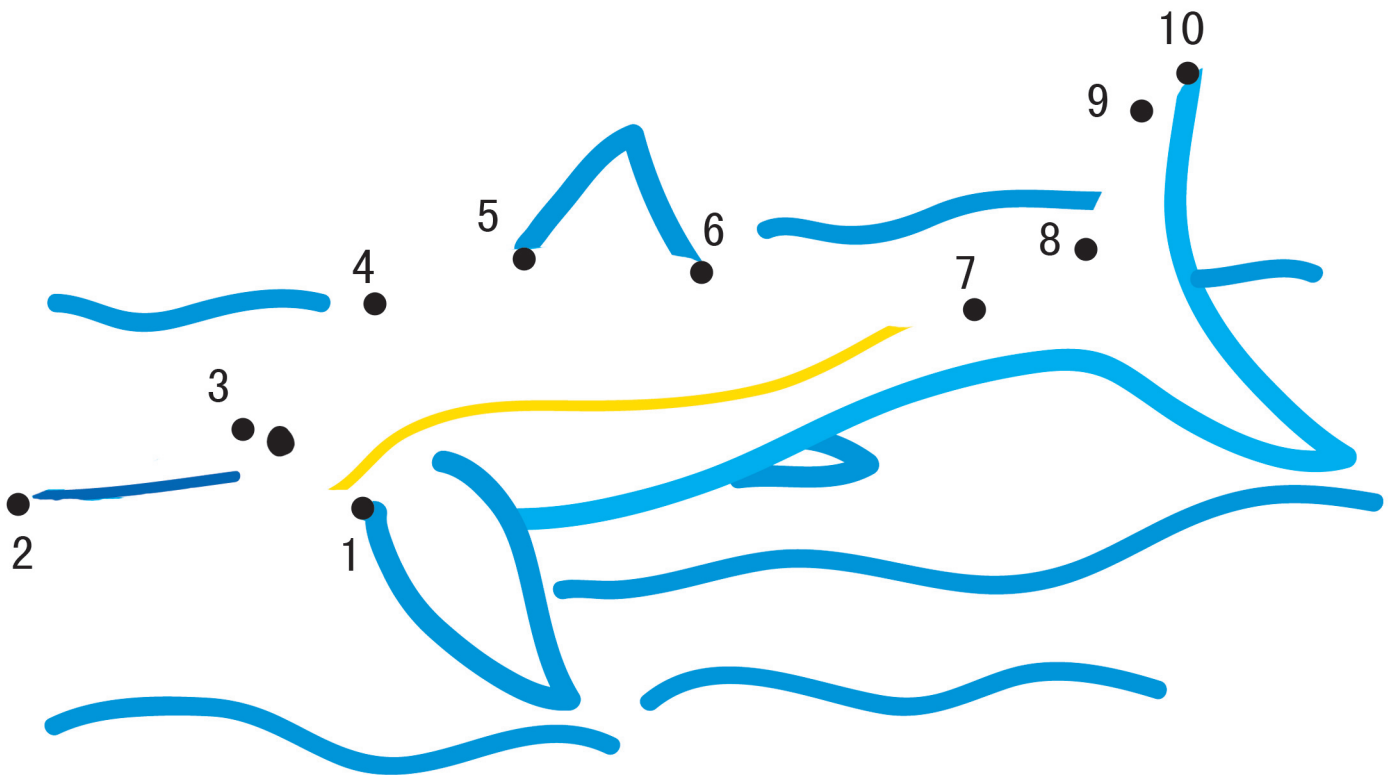




yú lóng bú shì yú wǎn cháng xiàng hǎi tún yǎn dà
 鱼龙不是鱼，吻长像海豚，眼大
 yá chǐ jiān yóu yǒng shǔ yī liú
 牙齿尖，游泳属一流。



yú	lóng
鱼	龙



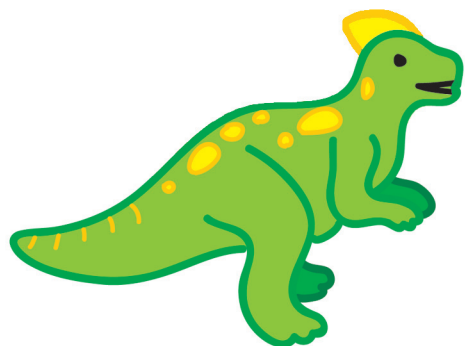


数字

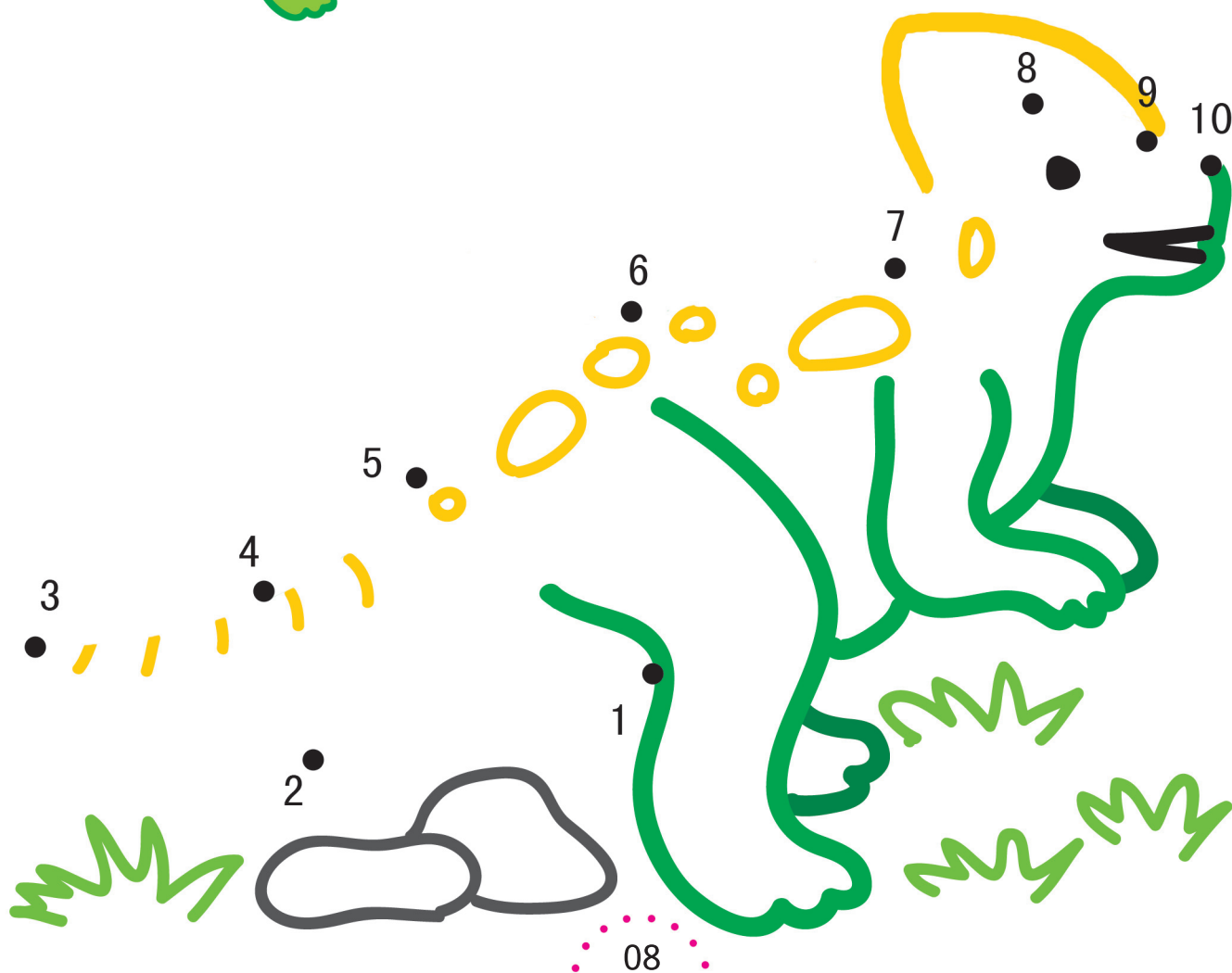
1~10

tóu shàng dài kuī mào wěi ba cháng yòu pàng shí cháng ài
头上戴盔帽，尾巴长又胖，时常爱

biǎo xiàn xǐ huan bù tíng jiào
表现，喜欢不停叫。

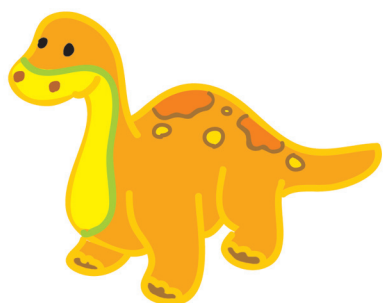


kuī	lóng
盔	龙

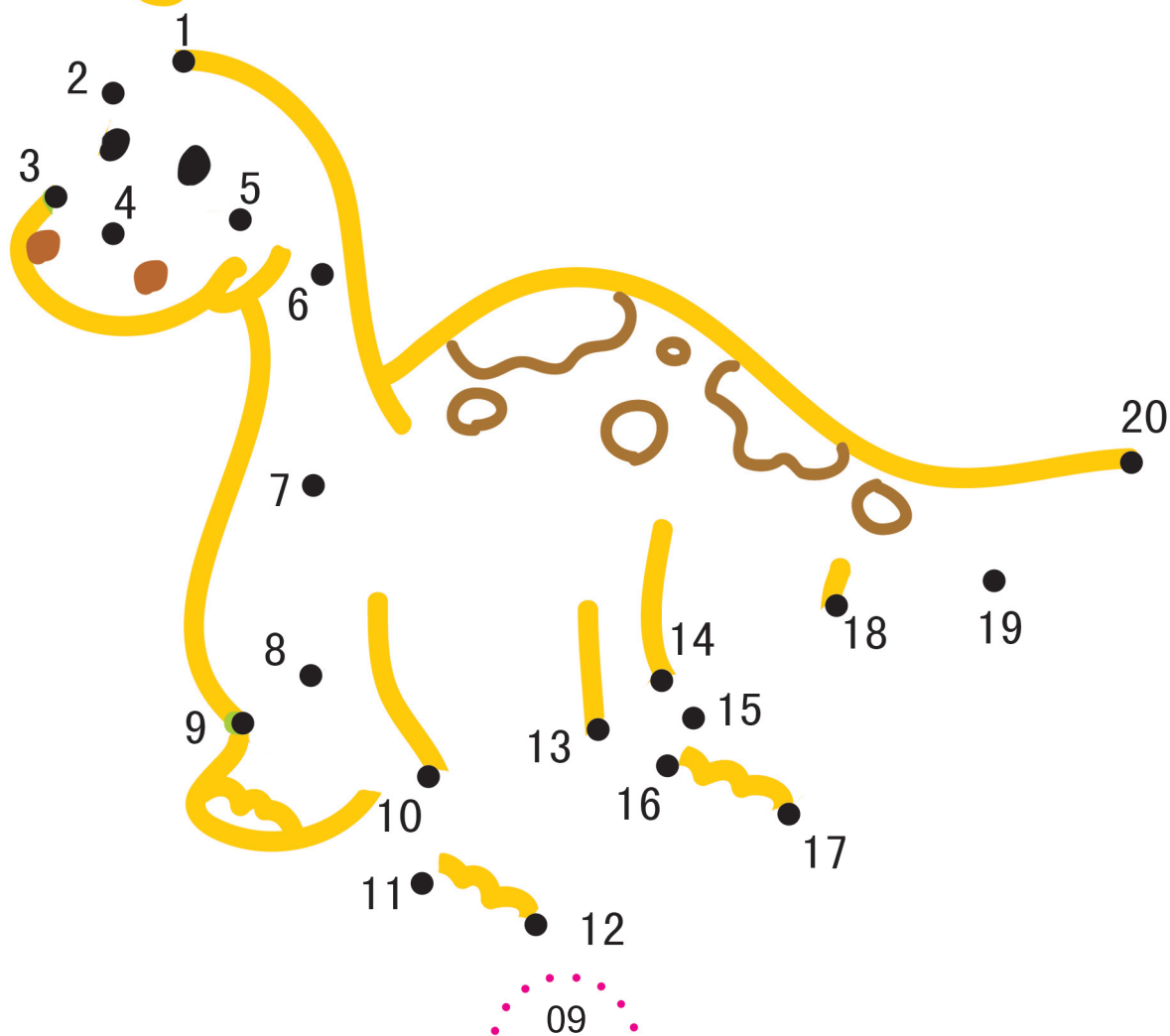




léi lóng léi lóng zhǐ chī cǎo zǒu lù shēng yīn hōnghōng xiǎng
 雷龙雷龙只吃草，走路声音“轰轰”响，
 biān zi wěi ba cháng yòu zhuàng yá chǐ hǎo xiàng qiān bǐ tóu
 鞭子尾巴长又壮，牙齿好像铅笔头。



léi	lóng
雷	龙

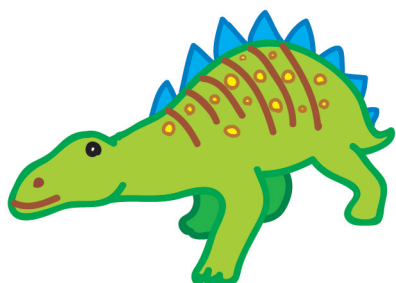




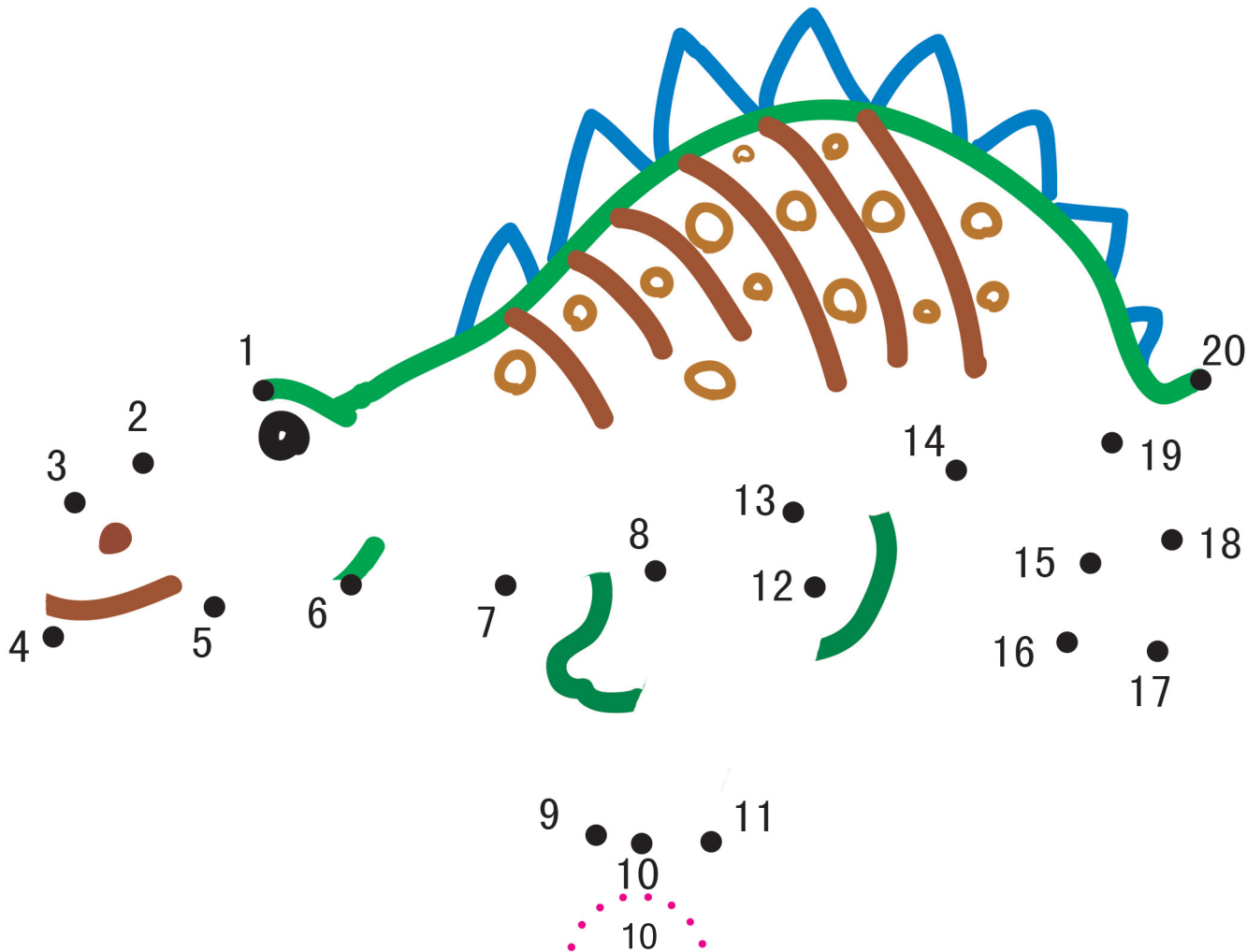
数字

1~20

shēn pī hòu jiǎ bǎn jiān cì yì pái pái sì zhī cū yòu
 身披厚甲板，尖刺一排排，四肢粗又
 duǎn shēn tǐ yuán gǔn gǔn
 短，身体圆滚滚。

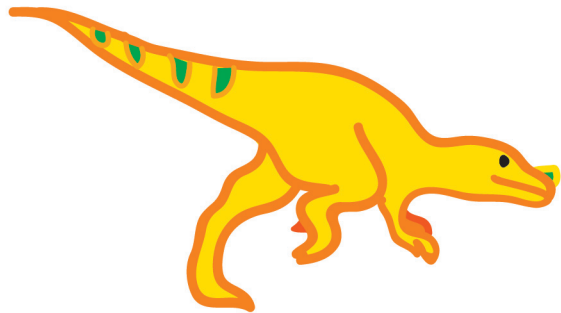


léng	bèi	lóng
棱	背	龙

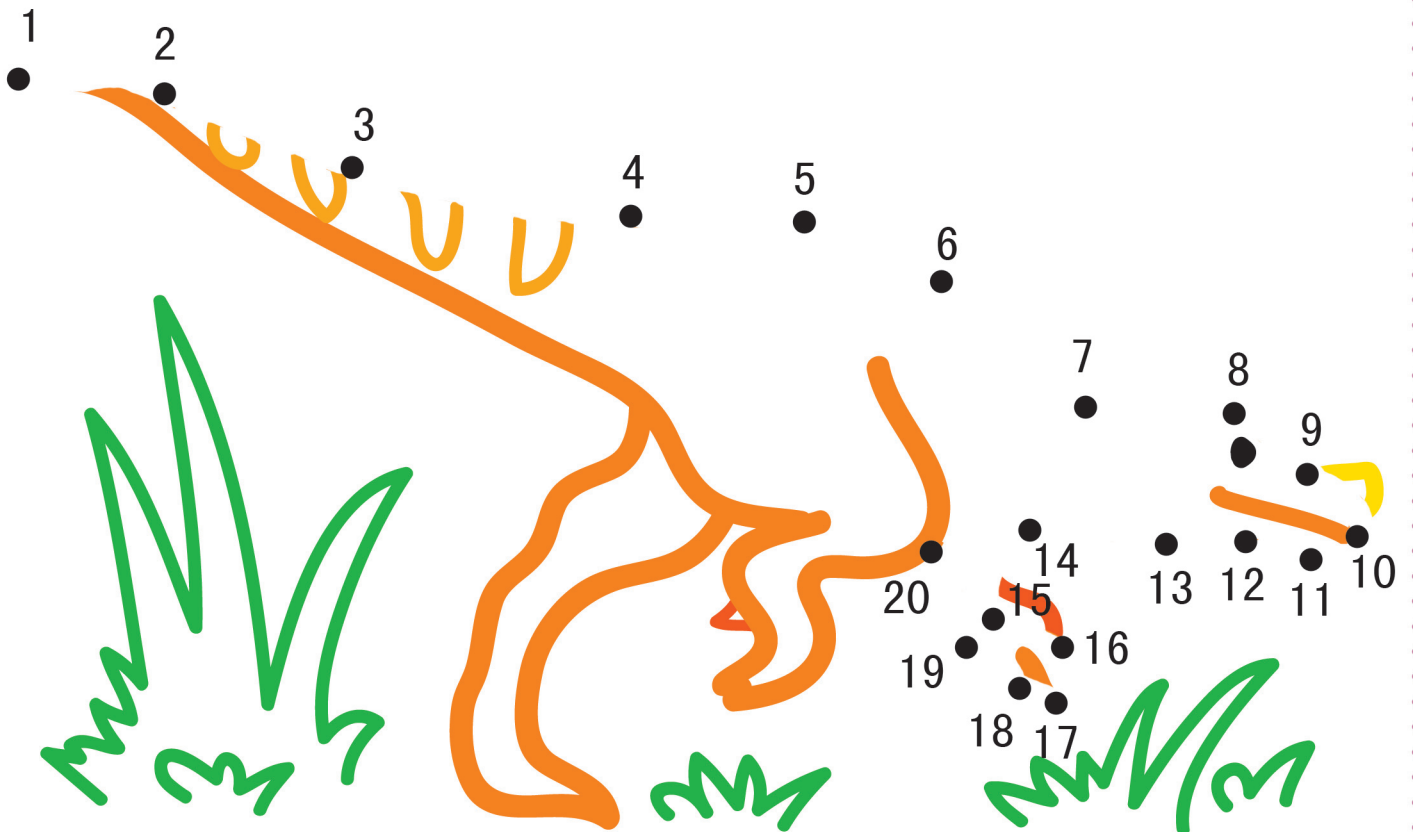




jiǎo bí lóng zuǐ ba dà yá chǐ xiàng dāo bí shàng zhǎng jiǎo
角鼻龙，嘴巴大，牙齿像刀，鼻上长角。



jiǎo	bí	lóng
角	鼻	龙

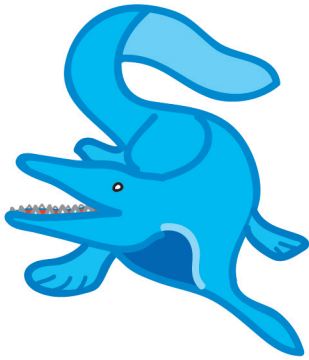




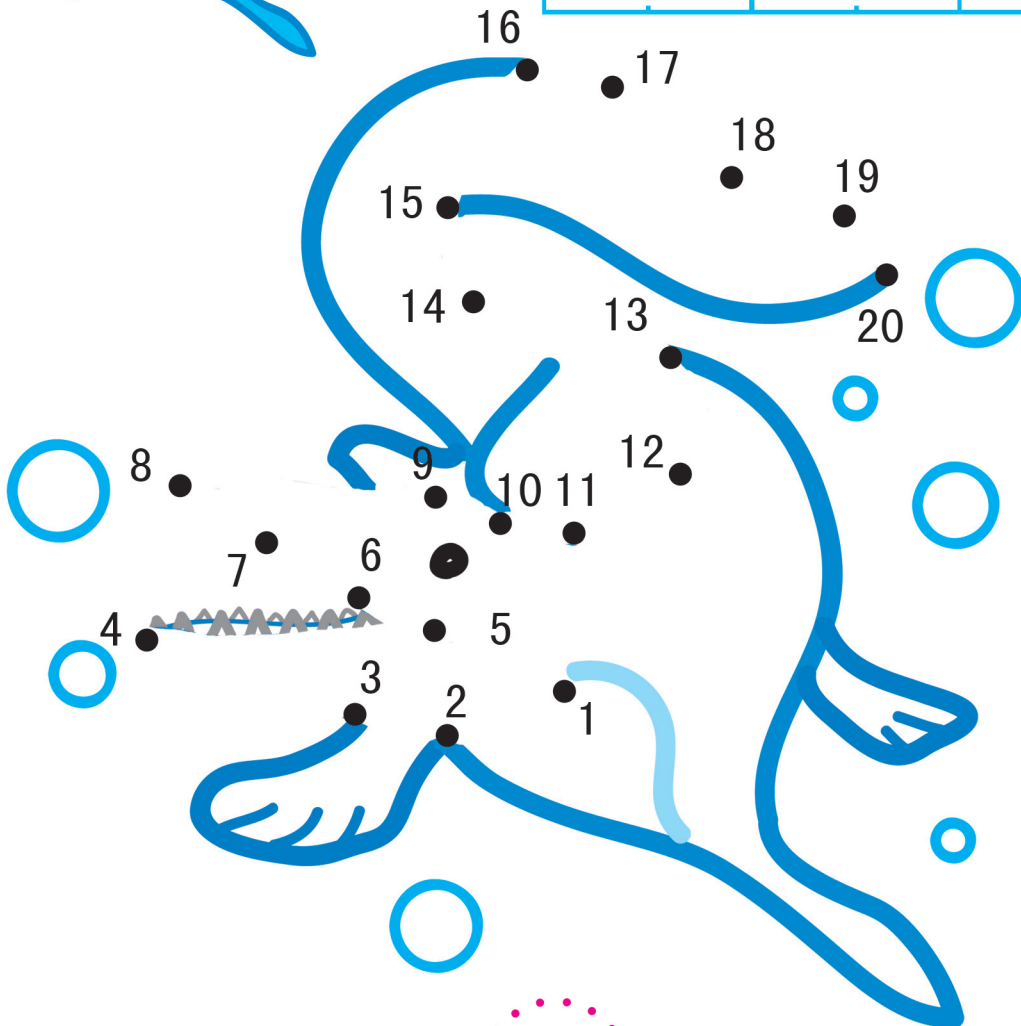
数字

1~20

hǎi wánglóng ài yóu yǒng jiǎn zuǐ ba ài chī ròu
海王龙, 爱游泳, 尖嘴巴, 爱吃肉。

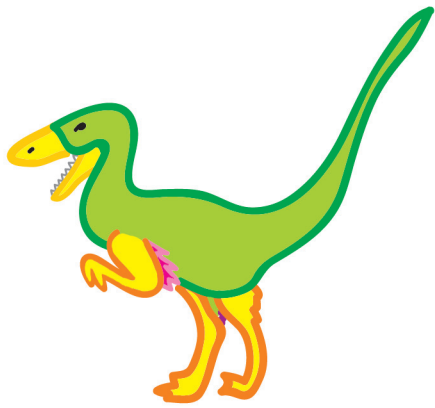


hǎi	wáng	lóng
海	王	龙

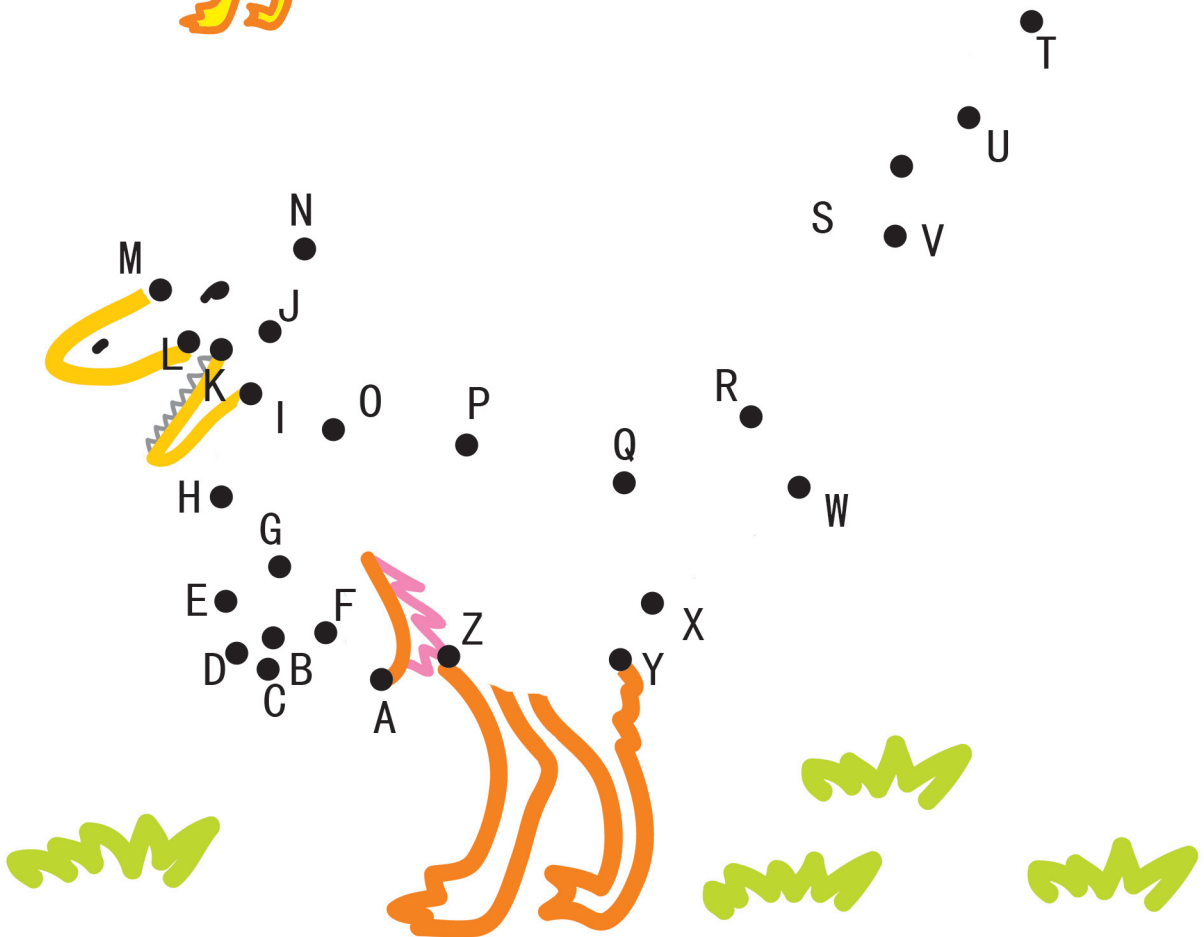




shì niǎo lóng gè er bù gāo shì lì hǎo bǔ shí běn lǐng gāo
嗜鸟龙，个儿不高，视力好，捕食本领高。

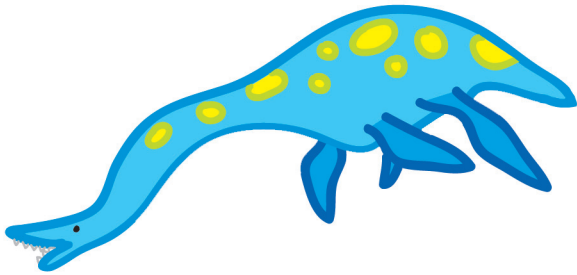


shì	niǎo	lóng
嗜	鸟	龙

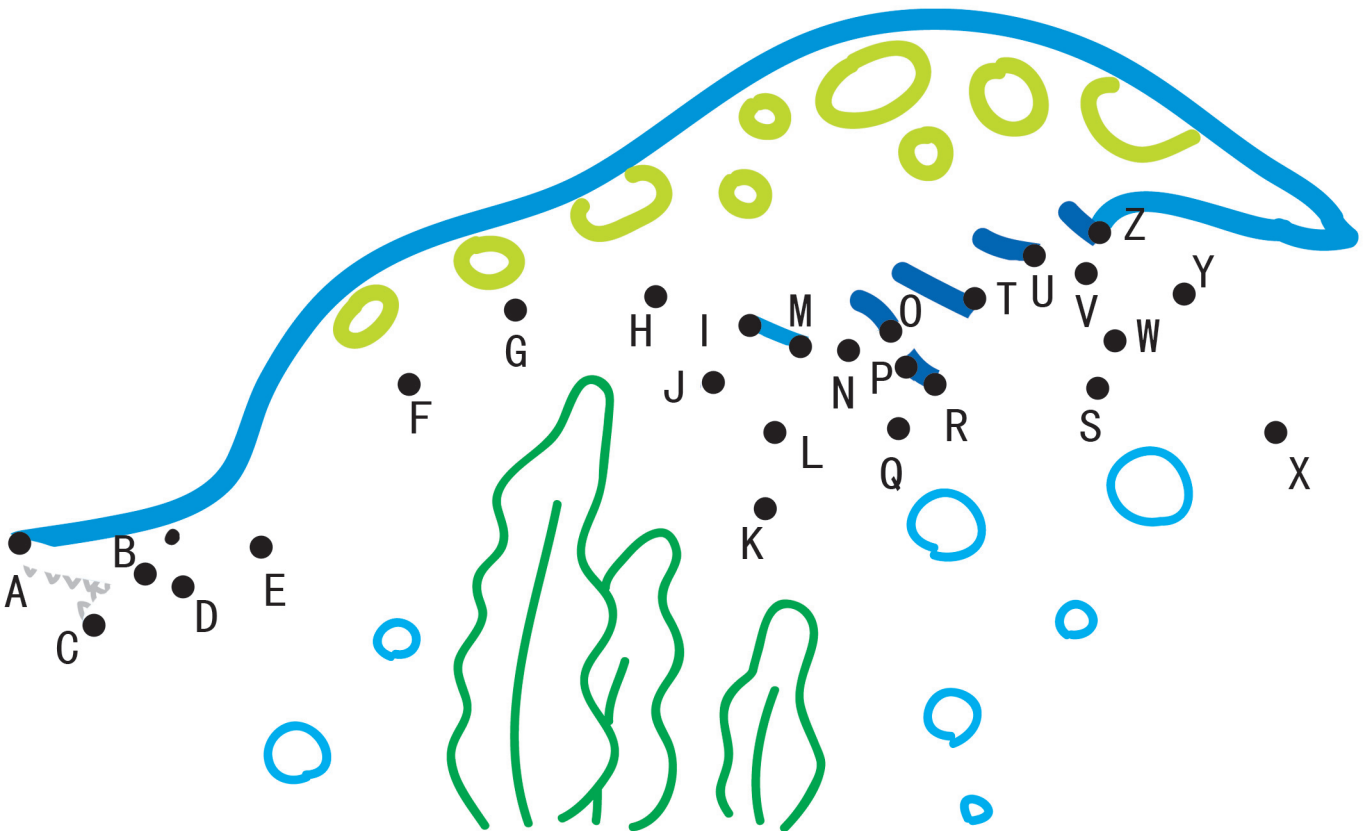




bó zi xiàngchángshé shēn tǐ xiàng guī ké tóu xiǎo zuǐ ba
脖子像长蛇，身体像龟壳；头小嘴巴
dà zuì ài chī yú xiā
大，最爱吃鱼虾。



shé	jǐng	lóng
蛇	颈	龙

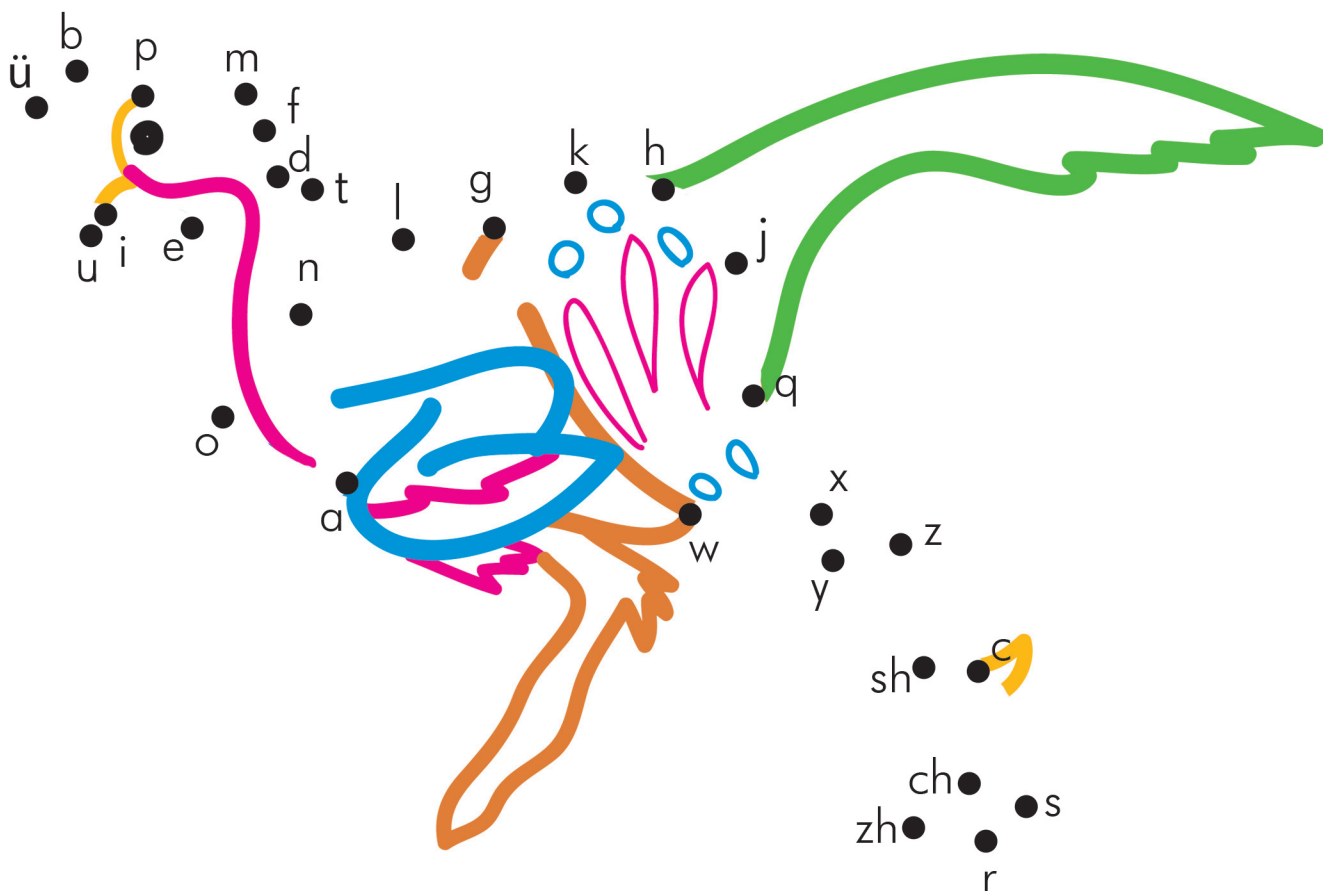




qiè dàn lóng bù tōu dàn chángzhuǎcháng wěi ba tóu shàng
 窃蛋龙，不偷蛋，长爪长尾巴，头上
 dài gāo guān
 戴高冠。



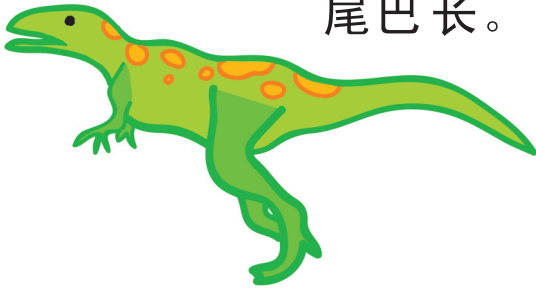
qiè	dàn	lóng
窃	蛋	龙





拼音
a~w

yì tè lóng zhǎng zhe dà xíng tóu lú gǔ tóu lú gǔ shàng yǒu
异特龙，长着大型头颅骨，头颅骨上有
dòng kǒng yì tè lóng jiǎo guān zhǎng zài yǎn shàng fāng bó zi cū zhuàng
异特龙，角冠长在眼上方，脖子粗壮
wěi ba cháng
尾巴长。



yì	tè	lóng
异	特	龙

