



C H B (L)

世界著名建筑设计事务所

蓝天组

COOPHIMMELB(L)AU

World Top Architectural Studio

凤凰空间·北京 编

江苏人民出版社

C H B (L)

世界著名建筑设计事务所

蓝天组

COOPHIMMELB(L)AU

World Top Architectural Studio

凤凰空间·北京 编

COOP. FIM

IS NOT A COLOR BUT
CREATING A RICH
FANTASY, AS BYANT
AS CLOUDS.

蓝天组所要表达的不是一种
一样变幻莫测的理念。

MELBLAN

GET AN IDEA OF
STRUCTURE WITH
A NO VARIABLE

P. OMBL

颜色，而是建筑是可以像云

沃尔夫·狄·普里克兹

图书在版编目 (C I P) 数据

蓝天组/凤凰空间·北京编.
—南京：江苏人民出版社，2011.12
(世界著名建筑设计事务所)
ISBN 978-7-214-07715-8

I. ①蓝… II. ①凤… III. ①建筑设计—作品集—中国—现代 IV. ①TU206

中国版本图书馆CIP数据核字(2011)第258504号

世界著名建筑设计事务所——蓝天组 凤凰空间·北京 编

责任编辑：蒋卫国 郑亚男 叶 爽

责任监印：彭李君

出 版：江苏人民出版社（南京湖南路1号A楼 邮编：210009）

发 行：天津凤凰空间文化传媒有限公司

销售电话：022-87893668

网 址：<http://www.ifengspace.cn>

集团地址：凤凰出版传媒集团（南京湖南路1号A楼 邮编：210009）

经 销：全国新华书店

印 刷：中华商务联合印刷(广东)有限公司

开 本：965 mm×1270 mm 1/16

印 张：18.5

字 数：150千字

版 次：2012年3月第1版

印 次：2012年3月第1次印刷

书 号：ISBN 978-7-214-07715-8

定 价：278.00元（USD 46.90）

（本书若有印装质量问题，请向发行公司调换）

COOP HIMMELBLAU

当我们谈及船舶，
众人联想的是海滩，
而我们脑海里浮现的是风浪扯起的白帆；
当我们谈及鹰鹫，
众人联想的是飞鸟，
而我们言语间描述的是羽翼展开的跨度；
当我们谈及黑豹，
众人联想的是猛兽，
而我们思量的是建筑难以驾驭的危险特性；
当我们谈及鲸鱼，
众人联想的是庞然大物，
而我们眼前浮现的则是30吨重量跃起的瞬间；
建筑于我们而言并非一部可查询的典籍或规范，
而是寻觅那蓦然回首处，
思绪敏于指间的动作的瞬间，
将其分解并诠释。

——沃尔夫·狄·普里克兹 1989

When we speak of ships, others think of shipwrecks.
We, however, think of billowing white sails.
When we speak of eagles, others think of birds.
We, however, are talking about the span of their wings.
When we speak of black panthers,
others think of predatory animals.
We, however, think of the untamed danger
of architecture.
When we speak of breaching whales,
others think of mammals.
We, however, think of a thirty ton weight, flying.
We don't find architecture in an encyclopedia.
Our architecture can be found there,
where thoughts move faster than hands to grasp it

—Wolf D. Prix 1989

1968年5月，蓝天组创立。1968，是建筑蓬勃发展的年代。巴黎街头，想象与创意随处可见，而我们则说，建筑行业想象与创意无处不在。

那是一个忘却古老建筑形式并将当代建筑领入当代形式的年代。

故此，全新的音乐形式、哲学理念以及全新的社会学说——皆较之建筑的规则更为重要。

启蒙、自决以及开放社会等理念成为我们设计理念中至关重要的部分，且一直延续至今。长久以来，我们一直借助云来诠释建筑，并以云命名了我们的事务所。

COOP意为合作，而HIMMELBLAU则非仅仅是颜色。HIMMELBLAU是一种设计理念，即，希望建筑可以象云那样，变幻莫测。对我们而言，建筑并非唯一的要点，所有与其相关联的：诸如音乐、哲学、教育、社会学、科技进步、社会发展以及现代研究发现等都是我们所关注的。

对设计过程进行分析、解构，营造潜意识空间，从而使得公共建筑的空间如行云流水一般——空间序列的体验——在过去、现在及将来对我们而言皆非常重要。

在如今的数字化大环境下——这样一个瞬间记忆的年代，当代建筑的标志性极为重要和必要。那些可识别的、原创的、典型建筑形态语言，让人在情感上能够与其产生互动的建筑无疑将在我们的“心智地图”上拥有不可替代的地位。

——沃尔夫·狄·普里克兹 1989

We founded COOP HIMMELBLAU in May 1968. The year when architecture exploded was 1968. All the power of imagination was on the streets of Paris and we said, all the power of imagination to architecture.

It was time to forget the ancestral rules and to develop a timely architecture of timely forms.

Therefore the new music, new philosophy and the new social theory were more important to us – more important than the rules of architecture.

To us the theories of the enlightenment, self-determination and open society, were and to this day remain crucial design paradigms. We thought and still think of clouds as synonyms for our architecture and this is also how one should understand our name:

COOP stands for cooperation, and HIMMELBLAU is not a color, HIMMELBLAU is the idea to create architecture like clouds. Important for us however is not only the architecture, but also all that surrounds architecture: music, philosophy, education, sociology, social developments, technological advancement as well as findings of modern research.

To analyse the design process, to deconstruct it, to give space to the unconscious with the goal of generating open architectures composed of fluid spatial sequences – sequences of experience – these processes are important for us now as they were when the office was founded.

In today's digital environment, it seems to us that the search for a timely form, thus for an architecture which serves as an identification point is absolutely important and necessary. Memorable and archetypical figures from which the people can find their emotional bearings play a crucial role in the "mental map" of our cities.

——Wolf D. Prix 1989

蓝天组 执行董事会成员简介

COOP HIMMELB(L)AU



沃尔夫·狄·普里克兹
Wolf D. Prix
© Clemens Fabry

简历

沃尔夫·狄·普里克兹，1942年出生于维也纳，蓝天组创始人之一，设计总监，首席执行官。沃尔夫·狄·普里克兹曾就读于维也纳科技大学、英国建筑协会学院（AA）以及洛杉矶南加利福尼亚建筑学院（SCI-ARC）。

教学

在众多教学实践中，最为重要的当数在维也纳国立实用美术大学的教学经历。1993—2011年间，沃尔夫·狄·普里克兹就任该校建筑系教授（Prix工作室首席教授），历任建筑学院院长及奥地利维也纳国立实用美术大学副校长等职务。自教学实践中退休后，仍继续担任该校建筑学院院长职务。

沃尔夫·狄·普里克兹于1984年和1990年分别应邀出任伦敦的英国建筑学会学院（AA）和麻省剑桥哈佛大学的客座教授。1985—1995年期间，沃尔夫·狄·普里克兹在南加州大学（SCI-Arc）任客座教授。1998年以来，他一直在纽约哥伦比亚大学任教。自1999年起，沃尔夫·狄·普里克兹被授予洛杉矶加州大学（UCLA）的Harvey S. Perloff教授职位。2001年，他成为阿根廷

廷布宜诺斯艾利斯的巴勒莫大学荣誉博士。

荣誉

2002年，沃尔夫·狄·普里克兹被授予 Officier de l'ordre des arts et des lettres 文艺部勋章（法国），以及维也纳城市杰出贡献勋章。2004年，因其为教育行业所作出的贡献，沃尔夫·狄·普里克兹被授予安妮·斯频克（Annie Spink）杰出教育奖。2008年，因其在理论及实践方面为建筑界所作出的贡献，沃尔夫·狄·普里克兹被授予詹克斯（Jencks）奖章——建造预见奖。2009年5月，奥地利联邦总统汉斯·费舍尔博士（Dr. Heinz Fischer）为沃尔夫·狄·普里克兹颁发了奥地利科学和艺术荣誉勋章，以表彰他在建筑方面的杰出成就。2011年，他成为第一位被授予韩国釜山市荣誉市民称号的建筑师。

会员

1995—1997年，沃尔夫·狄·普里克兹是奥地利联邦科学、研究和艺术部建筑委员会的成员。

沃尔夫·狄·普里克兹还是奥地利艺术参议院、欧洲科学和艺术学院以及欧洲建筑文化咨询委员

会的成员。此外，他还是奥地利建筑师学会、德国建筑师联盟（BDA）、古巴圣克拉拉建筑师联盟、英国皇家建筑师学会（RIBA）、美国建筑师学会（AIA）以及意大利建筑协会的成员。

沃尔夫·狄·普里克兹出版了大量的著作，其设计建筑作品在全球范围内被各大博物馆广泛收藏。2006年，沃尔夫·狄·普里克兹代表奥地利出任意大利第11届威尼斯国际建筑双年展的评审委员。

哈拉德·克里格于1956年出生于奥地利格拉茨，并于1987年在格拉茨卡尔-弗阮参斯（Karl-Franzens）大学获得了法律及商业管理学硕士学位。1987—2000年间，他曾在奥地利内政部财务署任职，同时曾兼任施蒂利亚州（Styria）若干大型重点企业的的税务及审计工作。2000年，他以项目合伙人的身份转入一家以税务顾问、审计及经济顾问为主要业务的私有企业。

2003年起，哈拉德·克里格成为蓝天组（COOP HIMMELB(L)AU Wolf D. Prix / W. Dreibholz & Partner ZT GmbH）的项目合伙人。自2006年起，公司授权哈拉德·克里格担任蓝天组欧洲有限公司——德国法兰克福事务所的建筑及管理执行官。

卡若琳·施密特保沃于1967年出生于德国维尔茨堡，在慕尼黑长大并接受教育。她曾就读于慕尼黑理工大学，主修建筑，并于1992年毕业。自1992年起，她开始陆续参与蓝天组的国际性项目，分别在蓝天组奥地利维也纳总部、墨西哥瓜达拉哈拉工作室、加利福尼亚洛杉矶工作室从事建筑实践。自1993年起，她一直在加利福尼亚洛杉矶工作室工作。1995年，她考取了德国注册建筑师资格。并于1996年成为蓝天组项目合伙人。

卡若琳·施密特保沃目前担任维也纳蓝天组设计项目合伙人并负责主持加州洛杉矶工作室的日常事务。

卡若琳·施密特保沃在蓝天组主要负责的项目包括：于1994年竣工的荷兰格罗宁根博物馆东馆，于2008年竣工的加利福尼亚洛杉矶中心区域的9号视觉及表演艺术学院。此外，她还参与了蓝天组在全球范围内的一些研究课题及设计竞赛，诸如墨西哥瓜达拉哈拉的JVC城市娱乐中心，美国加州洛杉矶城市中心区域总体规划方案，以及蓝天组在全球范围内的若干多功能项目。其工作重心还包括对新博物馆理念的构思，为密歇根州兰辛市的布罗德艺术博物馆，以及丹麦兰讷斯市的兰讷斯艺术馆等设计作出了贡献。

卡若琳·施密特保沃曾分别在1997—1998年间和1998—1999年间在南加利福尼亚大学和南加州建筑学院任教。自2011年起，执教于维也纳国立实用美术学院。2009年起，卡若琳·施密特保沃负责合作监管蓝天组所有设计文本。

Biographies

Wolf D. Prix, born in Vienna in 1942, a co-founder, Design Principal and CEO of COOP HIMMELB(L)AU. He studied architecture at the Vienna University of Technology, the Architectural Association of London, and the Southern California Institute of Architecture in Los Angeles.

Teaching

Most formative among his many international teaching positions was his tenure at the University of Applied Arts Vienna: from 1993 to 2011 he was Professor for Architecture (Studio Prix), and continues to serve as Dean of the Institute of Architecture.

He taught as a visiting professor at the Architectural Association in London in 1984 and at Harvard University in Cambridge, Massachusetts in 1990. From 1985 to 1995, Wolf D. Prix was active as Adjunct Professor at the SCI-Arc in Los Angeles. In 1998 he was a faculty member of Columbia University in New York. In 1999, Wolf D. Prix was awarded the Harvey S. Perloff Professorship at the University of California Los Angeles (UCLA). In 2001, he served as adjunct professor at UCLA and became a Doctor Honoris Causa de la Universidad de Palermo, Buenos Aires, Argentina.

Awards

In 2002, Wolf D. Prix was made Officier de l'ordre des arts et des lettres and was also awarded the gold medal for merits to the federal state of Vienna. He received in 2004 the Annie Spink Award for Excellence in Architectural Education for his commitment to teaching and training and was awarded with the Jencks Award: Visions Built prize for his major contribution to the theory and practice of architecture in 2008. A year later, Federal President Dr. Heinz Fischer bestowed the Austrian Decoration of Honor for Science and Art on Wolf D. Prix for his outstanding creative achievements. In 2011 he was the first architect to be conferred with the title of an Honorary Citizen by the City of Busan, South Korea.

Memberships

From 1995 to 1997, Wolf D. Prix was a member of the architectural committee in the Austrian Federal Ministry of Science, Research, and the Arts.

He is a member of the Austrian Art Senate, of the European Academy of Sciences and Arts, as well as of the Advisory Committee for Building Culture. Furthermore, Wolf D. Prix belongs to the Architectural Association

Austria, the Association of German Architects (BDA) in Germany, the Architectural Association Santa Clara in Cuba, the Royal Institute of British Architects (RIBA), the American Institute of Architects (AIA), the Chamber of Architects Île de France and the Architectural Association Italy.

The work of Wolf D. Prix has been published in numerous books and his architectural designs have been featured in many museums and collections worldwide. In 2006, he was the commissioner for the Austrian contribution for the 10th International Exhibition of the Venice Biennale.

Harald Krieger, born 1956 in Graz, studied law and business administration at the Karl-Franzens-Universität Graz from where he received his graduate degree in Laws in 1987. From 1987 to 2000 he worked in the Austrian Inland Revenue Office and as tax and company auditor for major companies in Styria. In 2000 he moved into the private sector as managing partner of a tax consulting, auditing, and business consulting firm.

In 2003, Harald Krieger was designated as partner of COOP HIMMELB(L)AU Wolf D. Prix / W. Dreibholz & Partner ZT GmbH. He is authorized signatory of the architectural office and managing director of COOP HIMMELB(L)AU Europe GmbH, Frankfurt am Main, Germany since 2006.

Karolin Schmidbaur, born in 1967 in Würzburg, Germany was raised and educated in Munich. She studied Architecture at the Technical University of Munich and received her Diploma in 1992. Since 1992 she has been practicing Architecture internationally with COOP HIMMELB(L)AU in their offices in Vienna, Austria, Guadalajara, México and Los Angeles, California. Since 1993 she has been based in Los Angeles, California. She is a Licensed Architect in Germany since 1995. In 1996 she was made a Partner of COOP HIMMELB(L)AU.

Currently Karolin Schmidbaur is Design and Managing Partner of COOP HIMMELB(L)AU Vienna and also the Director of COOP HIMMELB(L)AU's Los Angeles, California office.

Completed projects at COOP HIMMELB(L)AU under her lead include the Groningen Museum East Pavilion, the Netherlands, completed in 1994, and the Central Los Angeles Area High School #9 for visual and performing arts in downtown Los

Angeles, California, completed in 2008. Among studies and competitions are the JVC Urban Entertainment Center in Guadalajara, México, a master plan for an Urban Development downtown Los Angeles, California, and mixed-use projects all over the world. Another focus lies in the formulation of new museum concepts such as the Broad Art Museum in Lansing, Michigan, and the Randers Art Museum in Randers, Denmark.

Karolin Schmidbaur has taught design studio at the University of Southern California (1997-1998) and the Southern California Institute of Architecture (SCI-Arc) from 1998 to 1999. Since 2011 she is teaching at the University of Applied Arts in Vienna. Since 2009 Karolin Schmidbaur is co-responsible for the entire design portfolio at COOP HIMMELB(L)AU.

蓝天组事务所简介

COOP HIMMELB(L)AU

简介

蓝天组自1968年由 Wolf D. Prix、Helmut Swiczinsky 和 Michael Holzer 在奥地利维也纳共同创立以来，多年来一直在建筑、城市规划、设计以及艺术等领域非常活跃。1988年，其第二工作室在美国洛杉矶开业。其后，随着项目的拓展，又陆续在德国法兰克福、法国巴黎及中国香港成立了项目工作室。如今，蓝天组共有来自全球19个国家的设计、工作人员约150名。

事务所简介

事务所由 Wolf D. Prix, Harald Krieger, Karolin Schmidbauer 及其项目合伙人共同经营。他们是 Michael Beckert, Luzie Giencke, Andrea Graser, Helmut Holleis, Markus Pillhofer, Markus Prossnigg, Wolfgang Reicht, Frank Stepper 与 Michael Volk。

事务所创建人之外的 Wolf D. Prix 目前担任事务所的设计总监及首席执行官职务。Michael Holzer 于1971年离开了事务所。Helmut Swiczinsky 于2001年自蓝天组日常事务中淡出，并于2006年因健康缘故退休。2000-2011年间，Wolf Dieter Dreiholz 加盟蓝天组，成为项目合伙人及首席执行官。2003年，Harald Krieger 成为事务所项目合伙人，自2006年起负责主持蓝天组德国法兰克福项目工作室的日常管理事务。Karolin Schmidbauer 于1996年成为蓝天组的项目合伙人，目前出任蓝天组维也纳总部设计及管理项目合伙人（自2009年起），Karolin Schmidbauer 同时亦负责主持蓝天组在美国加州洛杉矶工作室的事务。

项目 (部分)

蓝天组最为人熟知的项目包括：位于维也纳的 Falkestraße 的屋顶改造项目 (1988)，法国默伦塞纳 (Melun-Sénart) 的“城市规划”，荷兰格罗宁根 (Groninger) 博物馆东馆 (1994)，为瑞士比尔世博会 EXPO.02 所设计的论坛展馆 (2002)，德国德累斯顿多功能 UFA 电影中心 (1998)，德国慕尼黑艺术学院 (2005) 和慕尼黑的宝马世界 (2007)，美国俄亥俄州的阿克伦艺术博物馆 (2007)，美国洛杉矶中央区域的9号视觉及表演艺术学院 (2008)，德国慕尼黑的场馆21微型歌剧空间 (2010)，奥地利海因堡的马丁·路德教堂 (2011)，以及韩国釜山市的釜山电影中心 (2011)。

过去几年中，蓝天组陆续在其总部所在地维也纳实现了若干颇具影响力的高层住宅项目，其中包括 SEG 赛格公寓大楼 (1998)，紧随其后的赛格公寓群落 (2000)，Gasometer 公寓改造煤气储罐B座 (2001)，Schlachthausgasse 公寓、写字楼 (2005)，以及坐落在奥地利维也纳“Liesing 啤酒酿制”原址的大型居住建筑群落 (2011)。

蓝天组近期在全球范围的重要项目包括法国里昂的汇流博物馆 (2013)，中国大连市的大连国际会议中心 (2012)，丹麦奥尔堡的音乐之家 (2012)，德国法兰克福的欧洲中央银行新总部大厦 (2014)。此外，正在规划中的项目还包括位于中国深圳的当代艺术馆与城市规划展览馆 (2013)；意大利加尔达云顶展览中心的扩建工程 (2012)；西班牙的萨饶茨文化中心 (2012)；巴库的阿塞拜疆中央银行 (2014) 以及阿尔巴尼亚首都地拉那的议会大厦。

荣誉及奖项 (部分)

过去40年中，蓝天组获得了诸多国际性奖项，其中包括：建筑艺术促进奖·柏林 (1982)，维也纳市政建筑大奖 (1988)，Erich

Schelling 建筑奖 (1992)，创新建筑奖 (1989、1990 和 1991)，奥地利国家大奖 (1999) 及欧洲钢结构设计大奖 (2001)。2005年，因阿克伦博物馆的设计，蓝天组被授予美国建筑奖。蓝天组设计的4个项目被授予2007年度国际建筑大奖，它们分别是：釜山电影中心、慕尼黑艺术学院、吉萨金字塔埃及博物馆以及科尔多瓦的当代艺术创作中心。2008年，蓝天组设计的美国俄亥俄州阿克伦博物馆和德国慕尼黑宝马世界分别获得英国皇家建筑协会国际建筑奖和英国皇家建筑协会欧洲建筑奖。同年，在世界建筑节大奖中，宝马世界被授予“杰出作品奖”。2010年，蓝天组因其项目“成城”获得了由MIPIM授予的可持续性类别的“建筑评论未来项目大奖”。2011年，蓝天组的大连国际会议中心获《墙纸》杂志设计大奖（获奖类别：最佳建筑施工现场）；同年，德国慕尼黑宝马世界获得 Dedalo Minosse 国际大奖以及红点设计大奖，美国洛杉矶中央区域的9号视觉及表演艺术学院获得产品设计大奖（获奖类别：建筑）。

展览 (部分)

被公认为对建筑行业未来的发展有着深远的影响，蓝天组及其作品频频被邀请参加国际性的展览。其中规模最大且最具影响力的是1992年在法国蓬皮杜艺术中心的回顾个展——建筑天堂，以及在1988年由菲利普·约翰逊和马克·威格利共同策展、在美国纽约现代艺术博物馆 (MOMA) 举办的主题为解构主义建筑的大展。

国际知名机构诸如美国洛杉矶的盖蒂基金会 (Getty Foundation)、维也纳的奥地利应用艺术博物馆 / 当代艺术馆 (MAK) 以及法国巴黎的蓬皮杜艺术中心等均已将蓝天组的作品设为其常规展览作品。

1996年，蓝天组应邀代表奥地利参加在意大利举办的第6届威尼斯国际建筑双年展。此后，蓝天组成为威尼斯国际建筑双年展常规的参展建筑事务所，并陆续展出了法国里昂汇流博物馆和广州歌剧院等项目。此外，法国里昂的汇流博物馆项目还于2002年10月-2003年3月之间在奥地利格拉茨举办的展览——潜在乌托邦中展出。

德国柏林的Aedes艺术馆东馆也陆续展出了蓝天组的作品，其中较有影响力的展览有1985年的天际线，1998年的维也纳三部曲及一座电影院，以及2002年的宝马活动及交付中心（宝马世界）国际设计竞赛展。同年，在意大利举办的第8届威尼斯国际建筑双年展中，蓝天组展出了新近的项目宝马世界以及为新世贸中心大厦所做的设计。2007-2008年，蓝天组——主题展览，超越蓝色在位于维也纳的奥地利应用艺术博物馆展出后，于2009年继续在美国俄亥俄州哥伦布市的威克斯艺术中心展出。2008年，在意大利举办的第11届威尼斯国际建筑双年展中，蓝天组的两件作品反馈空间——再访1969太空气球和意大利帕蒂格廖内的大脑城市实验室应邀参展。2009年12月19日-2009年12月23日期间，这两件装置将在日本东京NTT国际交流中心 (ICC) 策划的主题展览——蓝天组：重访未来中展出。2011年，蓝天组个展“建筑是媒体，媒体及信息”在韩国釜山市设计中心展出。

蓝天组还策划了一系列的展览。其中较为著名的包括1996年在洛杉矶当代艺术博物馆展出的 Paradise Cage: Kiki Smith and COOP HIMMELB(L)AU (天堂之笼：奇奇·史密斯和蓝天组)，2000年为奥地利施泰尔马克州格拉茨市的中秋节所策划的展览 Rudi Gemreich (茹蒂·甘爱都)，Fashion will go out of fashion (时尚将不再时尚)，该展览亦将继续在美国的费城展出。

COOP HIMMELB(L)AU BIOGRAPHY

COOP HIMMELB(L)AU

Biography

COOP HIMMELB(L)AU was founded by Wolf D. Prix, Helmut Swiczinsky, and Michael Holzer in Vienna, Austria, in 1968, and is active in architecture, urban planning, design, and art. In 1988, a second studio was opened in Los Angeles, USA. Further project offices are located in Frankfurt, Germany; Paris, France; and Hongkong, China. COOP HIMMELB(L)AU employs currently 150 team members from nineteen nations.

Office Profile

The architectural studio COOP HIMMELB(L)AU is directed by Wolf D. Prix, Harald Krieger, Karolin Schmidbaur and Project Partners. Those are Michael Beckert, Luzie Giencke, Andrea Graser, Helmut Holleis, Markus Pillhofer, Markus Prossnigg, Wolfgang Reicht, Frank Stepper, and Michael Volk.

After Michael Holzer left the team in 1971, and with the retirement of Helmut Swiczinsky in 2001 from COOP HIMMELB(L)AU's daily operations and in 2006 from the office, Wolf D. Prix is leading the studio as Design Principal/CEO. From 2000 until 2011, Wolfdieter Dreiholz was part of COOP HIMMELB(L)AU as CEO and Partner. In 2003 Harald Krieger was designated Partner of COOP HIMMELB(L)AU and is managing director of COOP HIMMELB(L)AU Europe GmbH, Frankfurt/ M., Germany, since 2006. Karolin Schmidbaur was made Partner of the office in 1996 and is currently Design and Managing Partner of COOP HIMMELB(L)AU Vienna (since 2009) as well as the Director of the office in Los Angeles, California (since 2003).

Projects (Selection)

COOP HIMMELB(L)AU's most well-known projects include: the Rooftop Remodeling Falkestraße in Vienna (1988); the "master plan" for the City of Melun-Sénart in France; the Groninger Museum, East Pavilion in Groningen (1994) in the Netherlands; the design for the EXPO.02—Forum Artepilage in Biel, Switzerland; the multifunctional UFA Cinema Center in Dresden, Germany (1998); the Academy of Fine Arts (2005) and the BMW Welt (2007) in Munich, Germany; the Akron Art Museum in Ohio, USA (2007); the Central Los Angeles Area High School #9 of Visual and Performing Arts in Los Angeles, USA (2008); the Pavilion 21 MINI Opera Space in Munich, Germany (2010); the Martin Luther Church in Hainburg, Austria (2011); and the Busan Cinema Center in Busan, South Korea (2012).

COOP HIMMELB(L)AU realized further key projects in Vienna in the past years, including the SEG Apartment Tower (1998), followed by the SEG Apartment Block Remise (2000);

the Apartment Building Gasometer B (2001); the Apartment and Office Building, Schlachthausgasse (2005); and the Apartment Building 'Liesing Brewery' (2011).

Among the recent projects that COOP HIMMELB(L)AU is pursuing throughout the world are the Musée des Confluences in Lyon, France (2014); the Dalian International Conference Center in China (2012); the House of Music in Aalborg, Denmark (2012); and the European Central Bank's new headquarters in Frankfurt am Main, Germany (2014). Additional projects in planning are the Museum of Contemporary Art & Planning Exhibition in Shenzhen, China (2013); the Expansion of the Fair and Multifunctional Hall in Riva del Garda, Italy (2014); the Central Bank of Azerbaijan, Baku Azerbaijan (2014) as well as The Open Parliament of Albania in Tirana, Albania.

Honors and awards (Selection)

Over the course of the past four decades, COOP HIMMELB(L)AU has received numerous international awards. These include: the Förderungspreis für Baukunst, Berlin (1982), the Award of the City of Vienna for Architecture (1988), the Erich Schelling Architektur Preis (1992), the Progressive Architecture/ P. A. Award (1989, 1990, and 1991), the Großer Österreichischer Staatspreis (1999) as well as the European Steel Design Award (2001). In 2005, for the design of the Akron Art Museum, our office received the American Architecture Award. Our office was awarded for the 2007 International Architecture Award for four projects. In 2008 COOP HIMMELB(L)AU received the RIBA International Award for the Akron Art Museum. In the same year the RIBA European Award and the World Architecture Festival Award: Production were given for the project BMW Welt. In 2010, COOP HIMMELB(L)AU won the MIPIM Architectural Review Future Projects Award in the category sustainability for their project Town Town Erdberg. In 2011 the office received the Wallpaper* Design Award 2011 (Category: "Best Building Sites") for the project Dalian International Conference Center, the Dedalo Minosse International Prize for the project BMW Welt as well as the Red dot award: product design (Category: "Architecture") for the Central Los Angeles Area High School #9 of Visual and Performing Arts.

Exhibitions (Selection)

Recognized as seminal for the architecture of the future, the works of COOP HIMMELB(L)AU have continually been the subject of international exhibitions. Among the largest and most widely known are the solo retrospectives Construire le Ciel in 1992 at the Centre Georges Pompidou in Paris, France,

and the exhibition entitled Deconstructivist Architecture held in 1988 at the Museum of Modern Art, New York, under the curatorship of Philip Johnson and Mark Wigley.

Internationally renowned institutions such as the Getty Foundation in Los Angeles, the Austrian Museum of Applied Arts/ Contemporary Art (MAK) in Vienna, and the Centre Georges Pompidou in Paris display the works of COOP HIMMELB(L)AU as part of their permanent exhibitions.

In 1996, COOP HIMMELB(L)AU was invited to serve as the Austrian representative to the 6th International Architecture Exhibition of La Biennale di Venezia, Italy. Since then, our studio has been a regular participant, presenting several projects such as the Musée des Confluences and the Guangzhou Opera House. The Musée des Confluences in Lyon was additionally shown at the Latent Utopias exhibition in Graz, Austria, from October 2002 to March 2003.

COOP HIMMELB(L)AU has also been presented on several occasions at the Aedes East Gallery in Berlin, for example, at well-known shows such as Skyline in 1985, The Vienna Trilogy +One Cinema in 1998, and the exhibition on the competition for the BMW Event and Delivery Center in 2002. In the same year, COOP HIMMELB(L)AU was also present at the 8th International Architecture Exhibition of La Biennale di Venezia, Italy, with the projects BMW Welt and a design for the new World Trade Center. In 2007/08, the exhibition COOP HIMMELB(L)AU. Beyond the Blue was shown at the MAK in Vienna and traveled in 2009 to the Wexner Center for the Arts, Columbus, Ohio, USA. At the 11th International Architecture Exhibition of La Biennale di Venezia, Italy, COOP HIMMELB(L)AU has been presented with two contributions: Astro Balloon 1969 Revisited - Feedback Space at L' Arsenale and Brain City Lab at Padiglione Italia. The two installations were also shown in 2009, at the COOP HIMMELB(L)AU: Future Revisited exhibition at NTT InterCommunication Center [ICC] in Tokyo, Japan. In 2011 the solo exhibition "Architecture is the Media and the Media is the Message" was shown at the Design Center in Busan, South Korea.

COOP HIMMELB(L)AU has also designed several exhibitions. Among their best known works are Paradise Cage: Kiki Smith and Coop Himmelb(l)au, shown in 1996 at the Museum of Contemporary Art in Los Angeles, and in 2000 Rudi Gernreich: Fashion will go out of fashion, for the Steirischer Herbst festival in Graz, Austria, which also traveled to Philadelphia, USA.

全体设计师照片

COOP HIMMEL B(L)AU



TEAM

COOP HIMMEL B(L)AU



目录

COOP HIMMEL B(L)AU

- 奥地利海因堡马丁·路德教堂 / 14
MARTIN LUTHER CHURCH HAINBURG, AUSTRIA
- 奥地利维也纳“成城”——Erdberg办公高层 / 22
TOWN TOWN – ERDBERG OFFICE TOWER, VIENNA, AUSTRIA
- 德国慕尼黑宝马世界 / 28
BMW WELT, MUNICH, GERMANY
- 德国慕尼黑场馆21微型歌剧空间 / 48
“PAVILION 21 MINI OPERA SPACE”, MUNICH, GERMANY
- 德国法兰克福欧洲中央银行 / 60
THE NEW PREMISES OF THE EUROPEAN CENTRAL BANK (ECB), FRANKFURT/M., GERMANY
- 意大利加尔达展览及多功能中心扩建工程 / 66
EXPANSION OF THE FAIR AND MULTIFUNCTIONAL HALL, RIVA DEL GARDA, ITALY
- 意大利佩鲁贾能量屋顶 / 72
ENERGY ROOF PERUGIA, PERUGIA, ITALY
- 反馈空间——再访1969年太空气球 / 78
COOP HIMMELB(L)AU: FUTURE REVISITED
- 丹麦奥尔堡音乐厅 / 82
HOUSE OF MUSIC, AALBORG, DENMARK
- 法国里昂汇流博物馆 / 92
MUSÉE DES CONFLUENCES, LYON, FRANCE
- 法国留尼旺岛当代中心 / 102
THE CENTER OF THE PRESENT TIME, LA REUNION, FRANCE
- 法国伊西办公高层 / 108
OFFICE TOWER ISSY, ISSY-LES MOULINEAUX, FRANCE
- “音乐浮云”法国巴黎新交响乐厅——PARC DE LA VILLETTE / 114
“MUSIC CLOUD”, NEW PHILHARMONY PARIS—PARC DE LA VILLETTE, PARIS, FRANCE
- 法国土伦公交综合体 / 118
PUBLIC TRANSPORTATION COMPLEX, TOULON, FRANCE
- 西班牙科尔多瓦当代艺术创造空间 / 122
SPACE OF CONTEMPORARY ARTISTIC CREATION, CORDOBA, SPAIN
- 阿尔巴尼亚议会 / 128
“THE OPEN PARLIAMENT OF ALBANIA”, TIRANA, ALBANIA
- 美国俄亥俄州阿克伦艺术博物馆 / 136
AKRON ART MUSEUM, OHIO, USA
- 美国洛杉矶中央区域9号视觉及表演艺术学院 / 146
CENTRAL LOS ANGELES AREA HIGH SCHOOL #9 FOR THE VISUAL AND PERFORMING ARTS, LOS ANGELES, CALIFORNIA, USA
- 巴西里约热内卢奥林匹克公园 / 158
OLYMPIC LAKE PARK, RIO DE JANEIRO, BRAZIL

CONTENTS

COOP HIMMEL B(L)AU

埃及“银云” “SILVER CLOUD”, CAIRO, EGYPT	/ 166
埃及考古博物馆 ARCHAEOLOGICAL MUSEUM EGYPT, TELL EL-DABA, EGYPT	/ 170
阿塞拜疆国家银行 CENTRAL BANK OF AZERBAIJAN, BAKU, AZERBAIJAN	/ 174
阿塞拜疆巴库国际象棋棋院 CHESS ACADEMY, BAKU, AZERBAIJAN	/ 178
韩国釜山电影中心 BUSAN CINEMA CENTER / BUSAN INTERNATIONAL FILM FESTIVAL, BUSAN, SOUTH KOREA	/ 182
中国大连国际会议中心 DALIAN INTERNATIONAL CONFERENCE CENTER, DALIAN, CHINA	/ 188
中国深圳当代艺术馆与城市规划展览馆 MUSEUM OF CONTEMPORARY ART & PLANNING EXHIBITION, SHENZHEN, CHINA	/ 202
中国深圳万科广场 VANKE VENUES SHENZHEN, SHENZHEN, CHINA	/ 214
中国广州白云新城文化区综合建筑群 BUILDING COMPLEX IN BAI YUN XIN CHENG CULTURE DISTRICT, GUANGZHOU, CHINA	/ 222
中国广州歌剧院 GUANGZHOU OPERA HOUSE, GUANGZHOU, CHINA	/ 232
中国广州电视观光塔 GUANGZHOU SIGHTSEEING, ENTERTAINMENT AND TELEVISION TOWER, GUANGZHOU, CHINA	/ 238
中国赛特广场 THE THREE PEARLS SCITECH PLAZA, BEIJING, CHINA	/ 242
中国宁波城市规划展示中心 RESTING CLOUD - NINGBO URBAN PLANNING EXHIBITION CENTER, NINGBO, CHINA	/ 250
中国美术馆 NATIONAL ART MUSEUM, BEIJING, CHINA	/ 258
中国杭州东湖“双塔” THE TWO PILLARS OF EASTLAKE, HANGZHOU, CHINA	/ 264
项目及出版物书目 LIST OF PROJECTSBI & BLIOGRAPHY	/ 274
部分展览列表 SELECTED EXHIBITIONS	/ 290
荣誉及获奖 AWARDS AND HONORS	/ 294

MARTIN LUTHER CHURCH HAINBURG, AUSTRIA

奥地利海因堡马丁·路德教堂

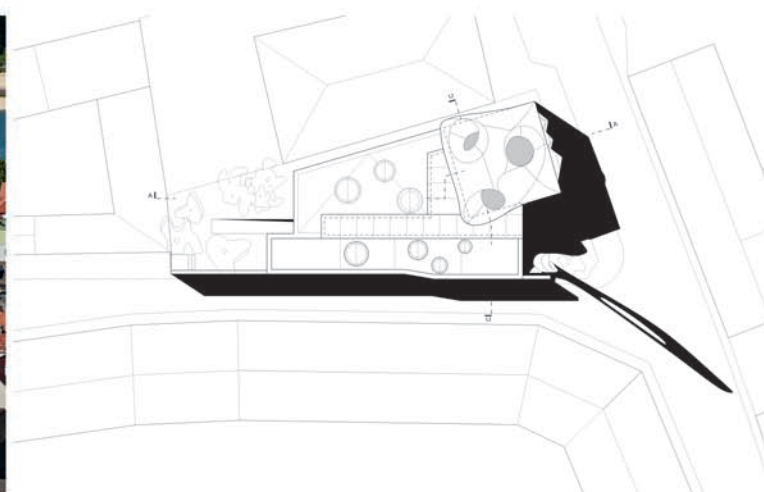
仅用了不到一年的时间，一座基督教新教教堂即在奥地利海茵堡城镇中心落成。教堂由圣所、教堂厅堂及其他辅助空间组成。其用地为一处毁于17世纪的古老教堂遗址。

In less than a year a protestant church together with a sanctuary, a church hall and supplementary spaces was built in the centre of the Lower Austrian town Hainburg, at the site of a predecessor church that doesn't exist anymore since the 17th century.



© Markus Pillhofer

鸟瞰图 PANORAMA

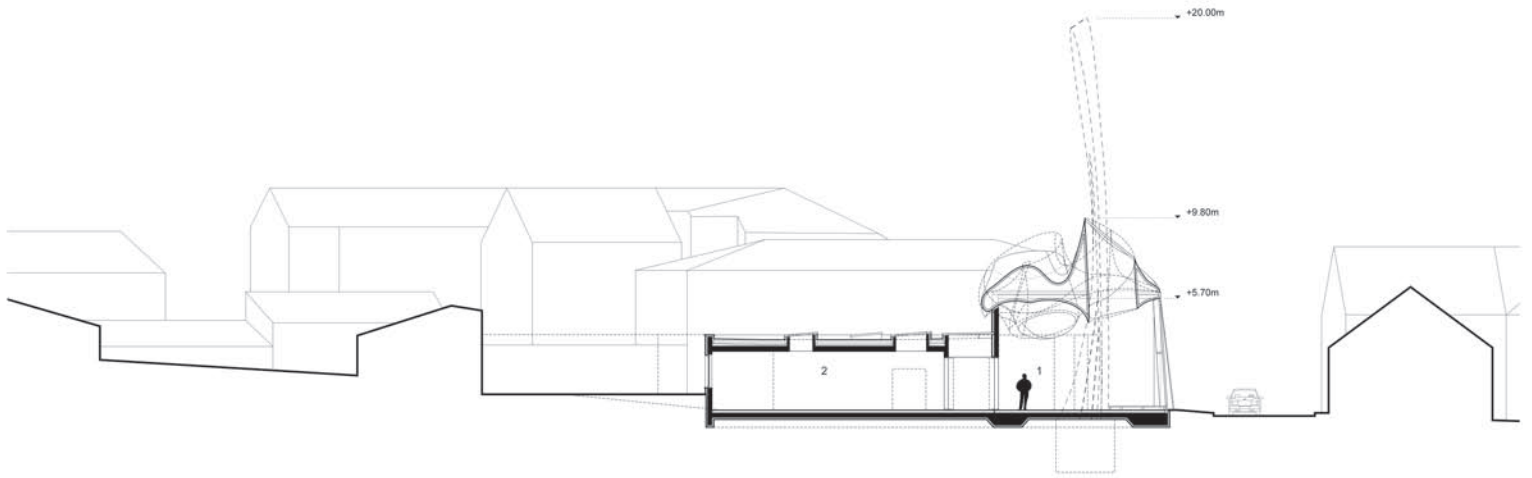


总平面图 SITE PLAN

设计: 蓝天组, Wolf D. Prix/W. Dreibholz & Partner ZT GmbH
设计总监/首席执行官: Wolf D. Prix
项目建筑师: Martin Mostböck
设计建筑师: Sophie-Charlotte Grell
项目团队: Steven Baites, Daniel Bolojan, Victoria Coaloa, Volker Kilian, Martin Neumann, Martin Jelinek, Jörg Hugo
业主: Association „Freunde der Evangelischen Kirche in Hainburg/Donau“, Austria
使用者: Evangelische Pfarrgemeinde A.B. Bruck a.d. Leitha – Hainburg/Donau, Austria
结构工程: Bollinger Grohmann Schneider ZT GmbH, Vienna, Austria
施工测量: Spirk & Partner ZT GmbH, Vienna, Austria
主体工程/细节处理: Markus Haderer Baubetrieb Ges.m.b.H, Hainburg/Donau, Austria
钢结构(屋顶/塔楼): OSTSEESTAAL GmbH, Stralsund, Germany
钢结构(立面): Metallbau Eybel, Wolfsthal, Austria
纤维水泥层: Eternit-Werke Ludwig Hatschek AG, Vöcklabruck, Austria; SFK GmbH, Kirchham, Austria
祭坛: Idee & Design, Stainz, Austria
用地面积: 420 m²
容纳50人的避难所, 社区空间及附属房间
地面建筑总面积: 289 m²
高度(薄板建筑/社区空间): 3.5 m
高度(避难所): 6 m
屋顶高度: 10 m
长: 25 m
宽: 10~17 m
钟塔高度: 20 m
设计初始: 2008年
建造初始: 2010年8月
投入使用: 2011年4月

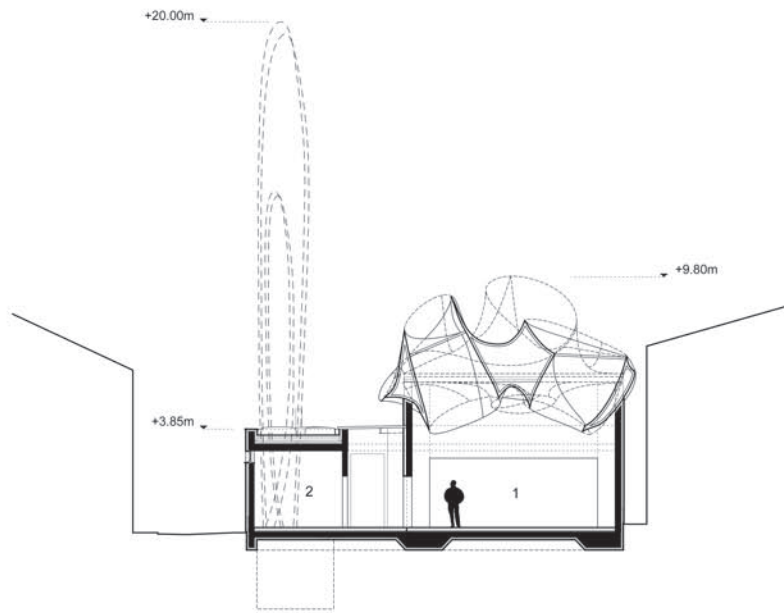
Planning: COOP HIMMELB(L)AU, Wolf D. Prix/W. Dreibholz & Partner ZT GmbH
Design Principal/CEO: Wolf D. Prix
Project Architect: Martin Mostböck
Design Architect: Sophie-Charlotte Grell
Project Team: Steven Baites, Daniel Bolojan, Victoria Coaloa, Volker Kilian, Martin Neumann, Martin Jelinek, Jörg Hugo
Client: Association "Freunde der Evangelischen Kirche in Hainburg/Donau", Austria
User: Evangelische Pfarrgemeinde A.B. Bruck a.d. Leitha-Hainburg/Donau, Austria
Structural Engineering: Bollinger Grohmann Schneider ZT GmbH, Vienna, Austria
Construction Survey: Spirk & Partner ZT GmbH, Vienna, Austria
Main Works/Finishing: Markus Haderer Baubetrieb Ges.m.b.H, Hainburg/Donau, Austria
Steel construction (Roof/Tower): OSTSEESTAAL GmbH, Stralsund, Germany
Steel construction (Façade): Metallbau Eybel, Wolfsthal, Austria
Fibre cement Cladding: Eternit-Werke Ludwig Hatschek AG, Vöcklabruck, Austria; SFK GmbH, Kirchham, Austria
Altar: Idee & Design, Stainz, Austria
Site Area: 420 m²
Sanctuary for 50 people, community space und ancillary rooms
Total Gross Floor Area: 289 m²
Height (Slab Building/Community Space): 3.5 m
Height Sanctuary: 6 m
Height Roof: 10 m
Length: 25 m
Width: 10-17 m
Height Bell Tower: 20 m
Start of Planning: 2008
Start of Construction: 08/2010
Opening: 04/2011





- 1 祈祷室
- 2 教堂大厅
- 5 社区花园
- 1 PRAYER ROOM
- 2 CHURCH HALL
- 5 COMMUNITY GARDEN

0 2 4 6 8 10
A-A剖面图 SECTION A-A



- 1 祈祷室
- 4 圣器收藏室
- 1 PRAYER ROOM
- 4 SACRISTY

0 2 4 6 8 10
C-C剖面图 SECTION C-C



© Duccio Malagamba