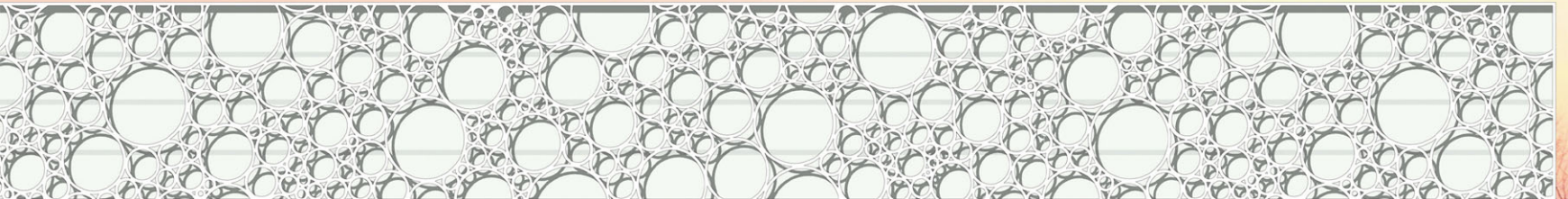
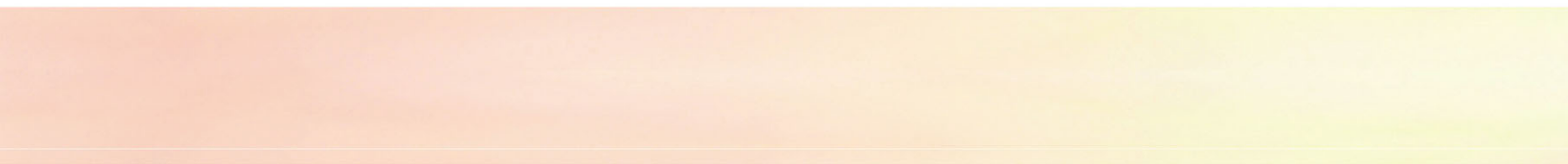
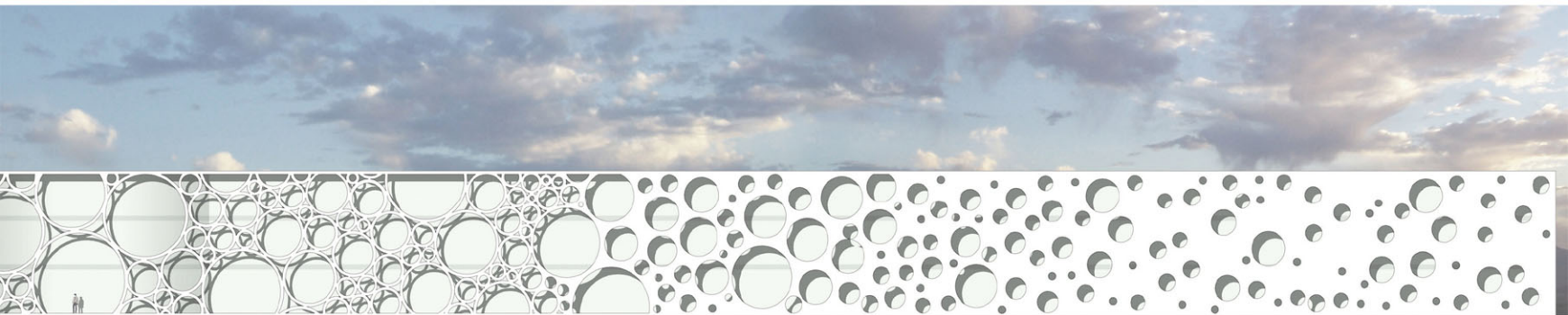
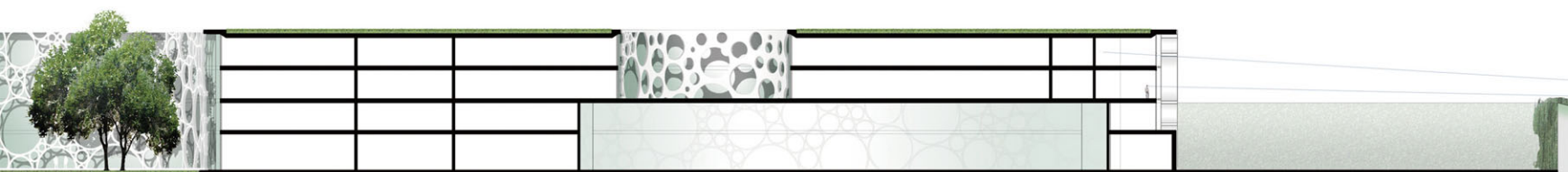


# A+C

## Architecture+Conception

### A+C 建筑+方案

凤凰空间·上海 编



**A+C**  
**Architecture+Conception**  
**A+C 建筑+方案**

凤凰空间·上海 编

## 图书在版编目 (CIP) 数据

A+C建筑+方案 / 凤凰空间·上海编. -- 南京 : 江苏  
人民出版社, 2011. 10  
ISBN 978-7-214-07465-2

I. ①A… II. ①凤… III. ①建筑设计—世界  
—现代—图集 IV. ①TU206

中国版本图书馆CIP数据核字(2011)第194140号

## A+C 建筑+方案

凤凰空间·上海 编

策划编辑: 石莹

责任编辑: 刘焱 石莹

责任监印: 彭李君

出版: 江苏人民出版社(南京湖南路1号A楼 邮编: 210009)

发行: 天津凤凰空间文化传媒有限公司

销售电话: 022-87893668

网址: <http://www.ifengspace.com>

集团地址: 凤凰出版传媒集团(南京湖南路1号A楼 邮编: 210009)

经销: 全国新华书店

印刷: 天津市豪迈印务有限公司

开本: 965毫米×1270毫米 1/16

印张: 26

字数: 208千字

版次: 2011年10月第1版

印次: 2011年10月第1次印刷

书号: ISBN 978-7-214-07465-2

定价: 328.00元 (USD 65.00)

(本书若有印装质量问题, 请向发行公司调换)

# 序言 Preface

作为中国主导性景观建筑出版机构之一，《国际新景观》杂志社与世界建筑协会网强强联手，共同推出本书。书中汇集了世界各地优秀建筑师的各类建筑设计作品，与此同时，嵌入一定的中国图书特色元素，为世界建筑设计界提供了又一精彩的参考读本。

世界建筑协会，成立于2008年3月1日。该协会由包括Hans Hollein、Mario Botta以及Fumihiko Maki在内的200位名誉成员组成。世界建筑协会建立了世界上首个互动式资料库，为世界各地的建筑师提供一个展示自己作品的平台，以获取全世界建筑界的认可。通过建议、讨论、修改、评价和共享他们的建筑作品，这一展示平台的独特功能为它的所有成员将来新的建筑思想的诞生奠定了一定的基础。

设立世界建筑协会奖的目的在于突出和展示卓越的建筑作品，以避免这些优秀的建筑作品被国际建筑界所忽视，同时，激发整个国际建筑界就当代建筑这一话题展开讨论，并通过讨论提出一些振奋人心的见解。

《国际新景观》杂志社不仅为国际景观设计界的互动与交流做出了卓著的贡献，对国际建筑界也贡献颇多，曾陆续出版若干册优秀建筑图书。

在此，笔者谨代表世界建筑协会期待着《国际新景观》及其读者们对世界建筑事业的更多关注与支持。

International New Landscape collaborates with Online World Architecture Community initiatives as a leading architectural publisher of China to publish this Book. Embracing Chinese culture is sine qua non for the Community's prospect of connecting architects from all countries in a common platform.

World Architecture Community launched on March 1, with 200 honorary members including Hans Hollein, Mario Botta, and Fumihiko Maki, is probably the first interactive database created to provide an opportunity for all local practices to become internationally recognized. Unique features of this portal enable all members to contribute in the making of the future of architectural thought by submitting, discussing, editing, rating, sharing their work.

The aim of the WA Community Awards is to highlight and publish remarkable projects that might otherwise remain unnoticed by the international public but have the potential to inspire exciting questions about contemporary architectural discourse.

The mission of International New Landscape is especially illustrating in this respect: focusing on landscape not only as an addition of architecture but as the very essence of it.

We expect that you and your readers play active roles in developing World Architecture Community.

Dr. Suha Özkan, 美国建筑师协会 名誉理事



# CONTENTS 目录

500 Cubic Meters – The Perfect Embodiment of the Architectural Art 500立方米——建筑艺术的完美体现	006	Centre for Nanoscience 纳米科学中心	060
<b>A</b> A House in Jeddah 吉达住宅	010	Childhood Evocative Mantle 孩童记忆弥漫的建筑覆盖物	064
A Kindergarten pedagogical Building Filled with Naivness 童趣十足的幼儿园教学楼	012	Continuity of Heritage 历史遗产的延续	068
A Novel Carapace House 新颖的甲壳住宅	014	Contour Museum 轮廓博物馆	070
A Secluded House in the Suburb Tokyo 东京市郊一座清幽的私宅	018	<b>D</b> Doğan Medya Center Ankara Cube as a Perfect form and More 安卡拉DMC中心	072
ACEN – Pilot Project for a Modern Trial Detention Center 现代感化中心实验项目	022	Dormitory for Staff of NGO Magic Bus – An Expression of Contemporary Sustainable Architecture NGO Magic Bus员工宿舍楼——当代可持续建筑艺术的精彩演绎	078
Adharshila Vatika 清新的学前教学楼	026	Drobeta Archaeology Museum 迪罗贝塔考古博物馆	082
Aeroform – Subsidized Urban Living Module 机翼形建筑形态——都市生活空间的补充形式	032	<b>E</b> EDF Archives Centre 法国电力公司档案中心	086
Alley Pond Park 艾丽池塘公园	038	Eicher-Volvo India Headquarters, Gurgaon 艾彻-沃尔沃印度总部	088
Arezzo Courthouse – The Emblem of Architectural Art 阿雷佐市最高法院办公大楼——建筑艺术的象征	040	EKOyapı Research Center EKOyapı科研中心	090
Argerich Building 阿格里奇住宅	044	ETC n 330 Gutierrez Ruiz, Maronas n 330 Gutierrez Ruiz, Maronas的全日制学校	092
Asian Culture Complex in GwangJu 光州亚洲文化综合楼	046	Eye Hospital 眼科医院大楼	094
Atatürk Culture Center and Merinos Park Atatürk文化中心与Merinos公园	048	<b>F</b> Floating Spaces of the Residence 浮动空间住宅	096
<b>B</b> Bungalow Olger 木质住宅大楼	052	Folded Bamboo + Paper House “竹制和纸制折叠住宅”	098
<b>C</b> Cash and Carry Food Store C&C食品店	054	<b>G</b> Grafishow Printing Works Grafishow印刷厂房	102
CB30 CB30大楼	056	<b>H</b> Helical Stair Gallery 螺旋楼梯美术馆	104
Cellular Network City – Peculiar Architectural Conception 蜂窝式建筑——奇特的建筑构想	058		

Hortus Officinalis 疾病控制中心	108	<b>M</b> M House (Module house) 模块住宅	168
Hoshikusa 壘草	110	MACRO Museum of Contemporary Art in Rome MACRO罗马当代艺术博物馆	170
Hotel Hospes Palacio de los Patos in Granada with Luxuriousness and Beauty 豪华亮丽的格拉纳达Hospes Palacio de los Patos大酒店	114	Manav Sadhna Activity Centre – Ahmedabad 艾哈迈达巴德市的Manav Sadhna活动中心	172
House in Carapicuiba Carapicuiba别墅	116	Meditation House – A Tranquil and Classic Spiritual Homestead 冥想住宅——恬静而典雅的心灵家园	174
House on Floating Land 漂浮大地 漂浮住宅	118	Meghna Residence - Living in Delta 位于三角洲的梅克纳住宅	176
House TTN – Residence for an “Urban” Extended Family TTN住宅——城市“大家庭”的新式住宅	120	Memorial of Flightno.655 655次航班纪念馆	180
<b>I</b> Ilpurla Substance Misuse Rehabilitation Centre Ilpurla药物滥用康复中心	124	Milhundos House Milhundos住宅	184
Innovation within Tradition – Cemetery of Comacchio 传统中的创新——科马乔墓地	128	Moon Project – Villa 月球度假区	188
Instant House 创新性临时住宅	132	Musee Des Confluences, Lyon, France (2001-2010) 法国里昂博物馆——现在与未来的完美结合	190
Integrated Parking Construction in the Historic Centre of Thessaloniki 塞萨洛尼基历史文化中心停车场综合设施建设	134	Museum of Ivan Marchuk 伊万马尔丘克博物馆	192
<b>K</b> Krakow Conference & Concert Centre Krakow, Poland 克拉科夫会议中心&音乐厅	140	My House 我的小屋	196
KU School of Architecture 美国堪萨斯大学建筑学院教学大楼	144	<b>N</b> Nashr Yadavaran Administrative Building Nashr Yadavaran行政大楼	198
KUMU – The Main Building of the Art Museum of Estonia KUMU——爱沙尼亚艺术博物馆主楼	146	National Museum of Pakistan 巴基斯坦国家博物馆	200
<b>L</b> LEGO 乐高木建筑	150	Nautilus 鹦鹉螺大厦	204
Lim Geo Dang 森林生活	156	New Sicilian Deli Corner – Food Experience 城市饮食广场中的建筑哲学	210
Living on Display – Harmonious Combination of Private Housing and Public Sales Site 私人住宅与公共销售场所的和谐共存	158	<b>O</b> Olympic House and Park, Nicosia, Cyprus 塞浦路斯奥林匹克之家及公园	212
Low-cost Warm Homestead – School and House for HIV Orphans in Uganda 低造价的温馨家园——乌干达艾滋病遗孤校舍	162	Orphanage at Chandpur, Bangladesh 孟加拉孤儿院	214
Luxurious House on the Water 水上豪华住宅	164	<b>P</b> Pachacamac House 秘鲁巴恰卡马隐藏别墅	218
		Passive Solar Habitat 被动式太阳能住宅	220
		Plan[T]is 未来城市住宅新模型之典范	224
		PUMA CITY – A Nimble Dismountable Container Building with Convenience PUMA CITY——便利灵巧的可拆卸式集装箱建筑	230

<b>R</b>	Reclaiming the City – Urban Nexus 2020 改造城市——城市枢纽2020	232		The Waterfall House 建筑与水的灵动组合——瀑住宅	318	
	Recreation Center 康乐中心——建筑与光的完美结合	238		The Women's Health Centre 布基纳法索女性健康中心	322	
	Rising Core House 增长型核心住宅	242		The Yoga Studio 瑜珈室	324	
	RM Library 造型独特的RM图书馆	246		Tokyo Matsuya Unity 东京松屋单元住宅	330	
	Rossignol International Headquarters 全球总部——建筑对山的赞礼	250		Touching Water 水上建筑	334	
	Royal Botanic Garden in Jordan 约旦皇家植物园	254		Tracing Perception 认知研究	340	
				Tranquil Multifamily Residence on the Hillside 宁静惬意的山间群居住宅	346	
				Tulipan House Tulipan住宅	350	
<b>S</b>	Shanghai Expo 2010: Italian Pavilion International Contest, 3rd prize winner 上海世博会 2010: 意大利馆国际竞赛, 三等奖	258				
	Silhouette Istanbul 伊斯坦布尔城市轮廓	262		<b>U</b>	Universidade Agostinho Neto Campus Plan 安哥拉Agostinho Neto大学校园规划	354
	SKMS Institute SK管理系统研究所	270		<b>V</b>	Villa in Ojai Ojai别墅	358
	Skyscrapers City 摩天大楼建筑群	276			<b>W</b>	Water – Touristic Complex in Kaliningrad Center 城市中心旅游开发区建设
	Small Library in the Centre of Thessaloniki 萨洛尼卡市中心小型图书馆	278		Winery in Santorini 圣托里尼葡萄酒厂		368
	Solar Tube – A Symbiosis between Nature and Architecture 太阳能管式住宅——自然与建筑的共生体	282		<b>X</b>	X HOUSE With Flexible Structure 结构灵活的X住宅	372
	Stair House 楼梯住宅	288			<b>Z</b>	Ziranenge/Angel – A Healthcare Center for Children 儿童保健中心
	Stone Terrace 石头平台	292				
<b>T</b>	TThe Consulate – An Ingenious Building 别出心裁的领事馆建筑	296				
	The Lightbox 光线的璀璨交错	298				
	The Mashrabiya House Mashrabiya住宅	300				
	The Museum of Modern Art 现代艺术博物馆	304				
	The New Venice Biennale Australian Pavilion 澳大利亚威尼斯风情阁	306				
	The Rainbow Tower and Poljane Masterplan 彩虹大厦及Poljane总体规划	310				
	The Special Container Building in the South of SANLITUN 三里屯南面特色集装箱建筑	316				

Project Team: Ângela Frias and Gonçalo Dias, architects

# 500 Cubic Meters — The Perfect Embodiment of the Architectural Art

## 500立方米——建筑艺术的完美体现

Given the program of creating a new and renewed area for cultural development, within the city of Beijing, the concept brings forward the idea of individualizing every kind of art and every kind of artist, whatever their craft. Thus, the buildings that are exactly 500 cubic metres in space are slightly separated between them. An objective approach to a bigger urban scheme is also the fact that this separation creates visual and light connections that allow the public to briefly interact with the dwelling of the artists and their work.

More spaces are created beside the courtyards of the houses, for exhibitions that are more public, vaster. These can bring together several kinds of work in a single space.

The concept of the individual is subverted in the interior of the houses. Each has the same arrangement of rooms, with small alterations on the length of the rooms themselves, always

reflecting the size of the shell. They are presented in three different kinds of sizes, although maintaining the same cubic area. Each of the sizes also varies in three different ways. This is presented in both the size of the rooms and the layout and size of the windows. The ground floor, access level is a presentation room, accessible through a ramp; this is used as a showroom to each of the artist's work. The ramp exists because the houses are one metre below, so they can use their terrace and maintain the 10-metre rule for the façade.

The first floor is a workshop, a place for the development of the art itself, where the person will be able to create freely, in an open space, and then quickly interact with the rest of the ground floor scheme, as well. This open space is only interrupted for the volume of the bathroom and the closet space.

The second floor is a subtle arrangement of one

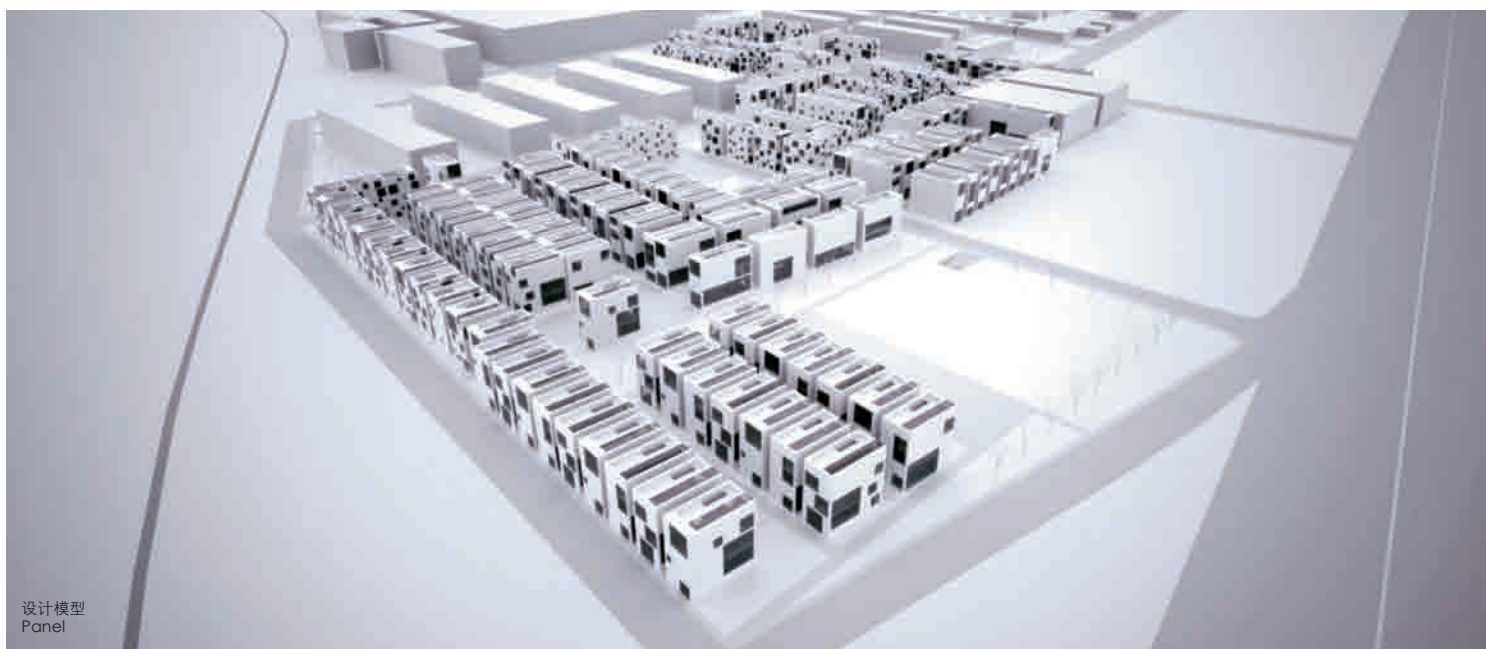
volume that creates a room structure separated from the circulation and living room, by sliding panels. The rest of the second floor is an open space as well, that allows the artist to arrange his own personal objects.

All the volumes have a private swimming pool on the rooftop. Someone far away will look at this scenery as a big lake, interrupted here and there by the spaces between the houses and the concrete roof slabs.

From the inside these swimming pools will provide lighting as well since their floor is partly transparent and someone inside the bedroom can enjoy the calming effect of waving water.

Different arts, different artists, different houses.

We make distinguished façades to announce the several artists, each house, and each art. Meanwhile the interior is equal for all houses.



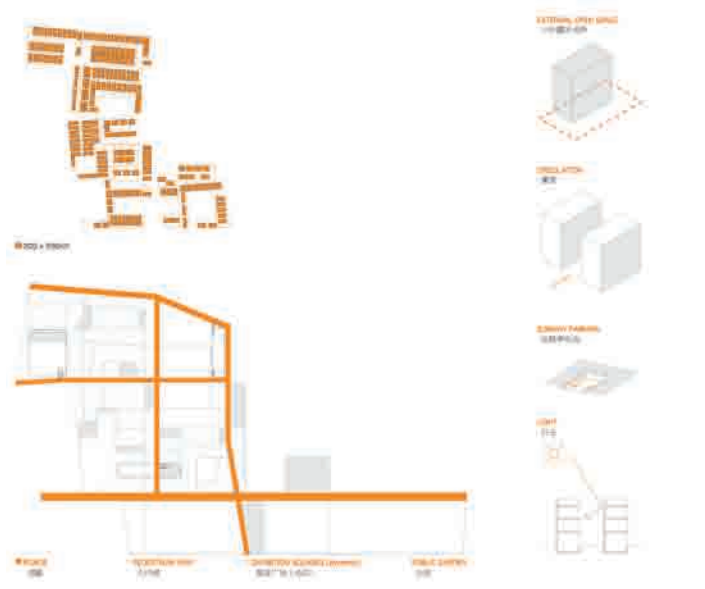
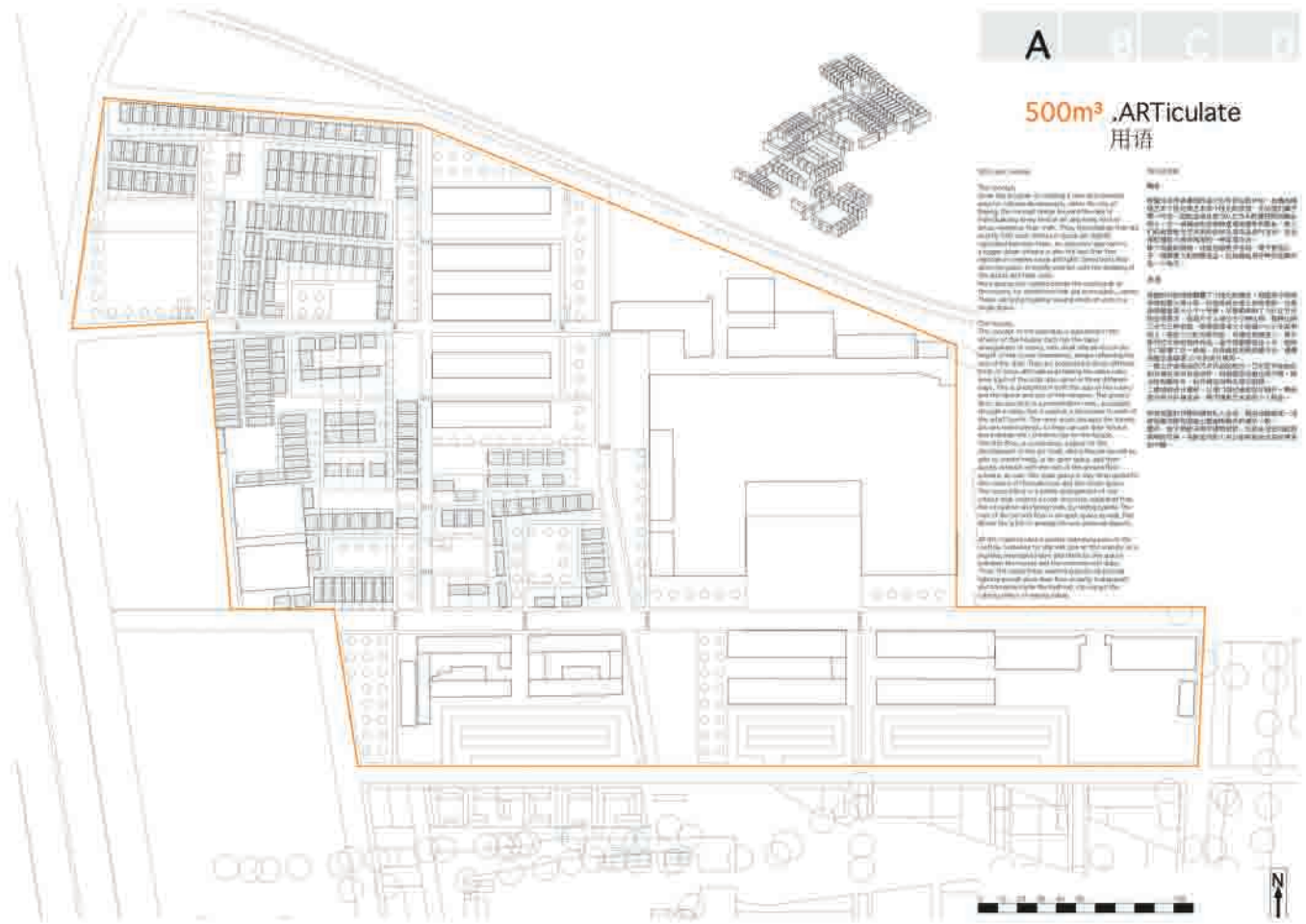
设计模型  
Panel



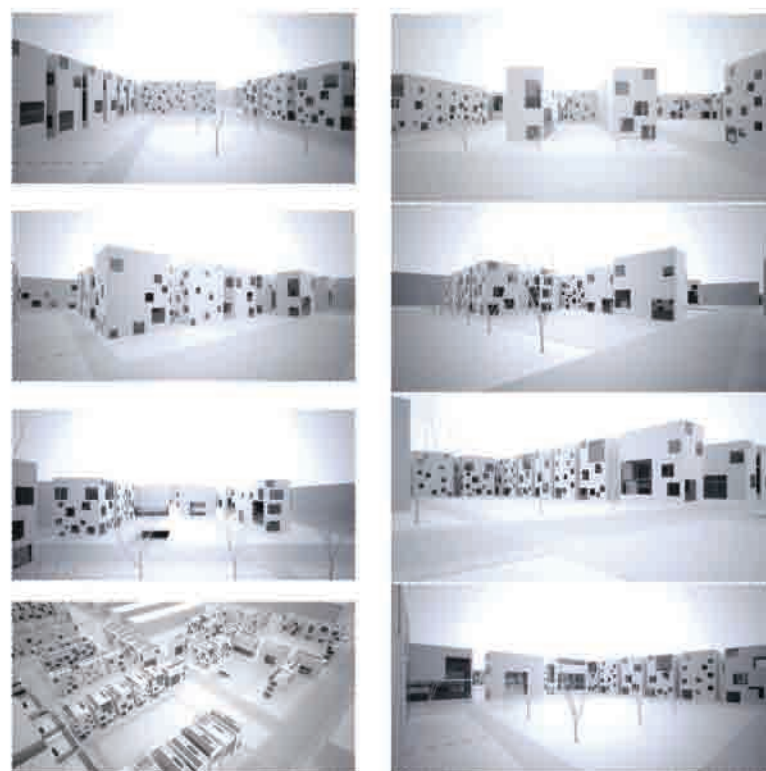
总体景观  
Global Views



总体景观  
Global Views



### 500m<sup>3</sup>.ARTiculate 用语



A B C D

500m³ .ARTiculate



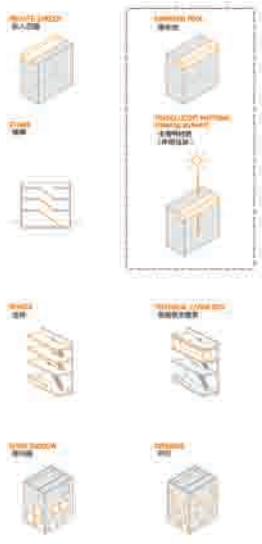
500m³ .ARTiculate



500m³ .ARTiculate



500m³ .ARTiculate  
用语



© 2010-2011 上海世博会中国馆设计团队  
All rights reserved. No part of this publication may be reproduced, stored in a retrieval system, or transmitted in any form or by any means, electronic, mechanical, photocopying, recording, or by any information storage and retrieval system.

设计模型  
Panel



A B C D

500m³ .ARTiculate  
用语



设计模型  
Panel





室内布局  
Interior



室内布局  
Interior

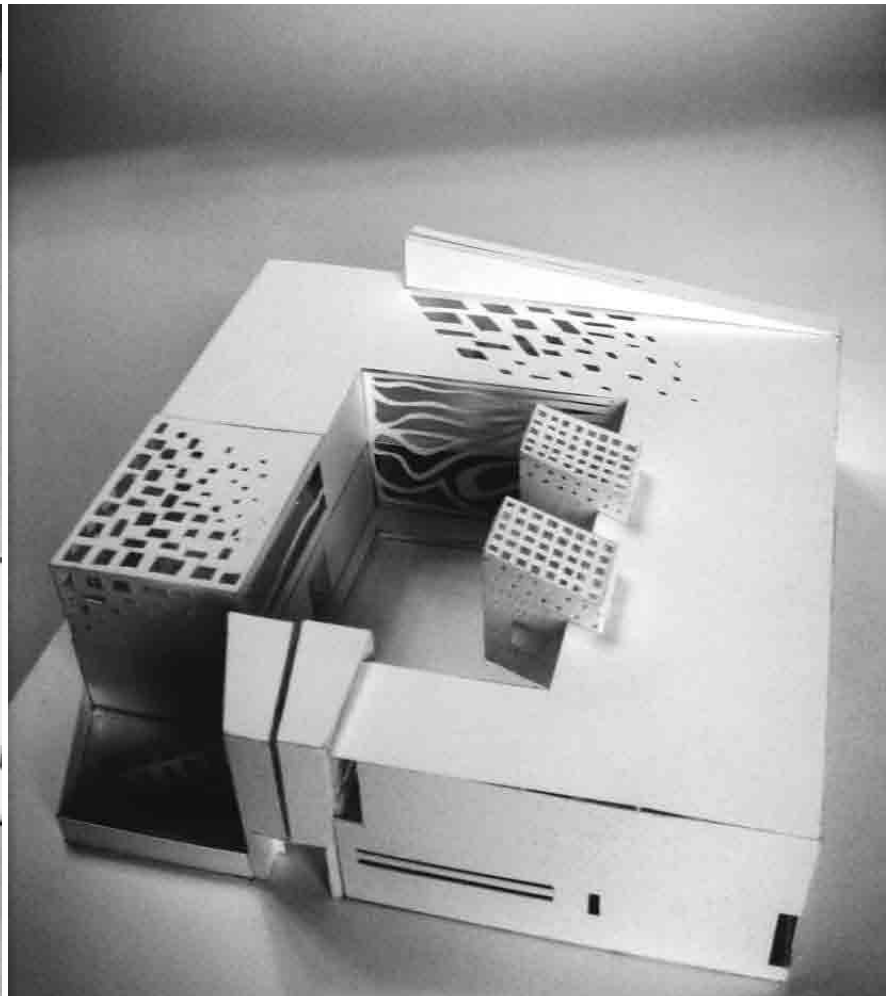
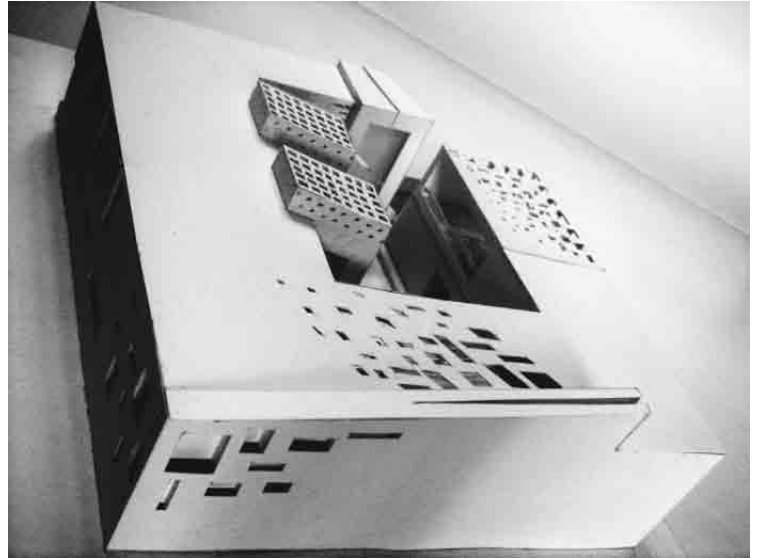


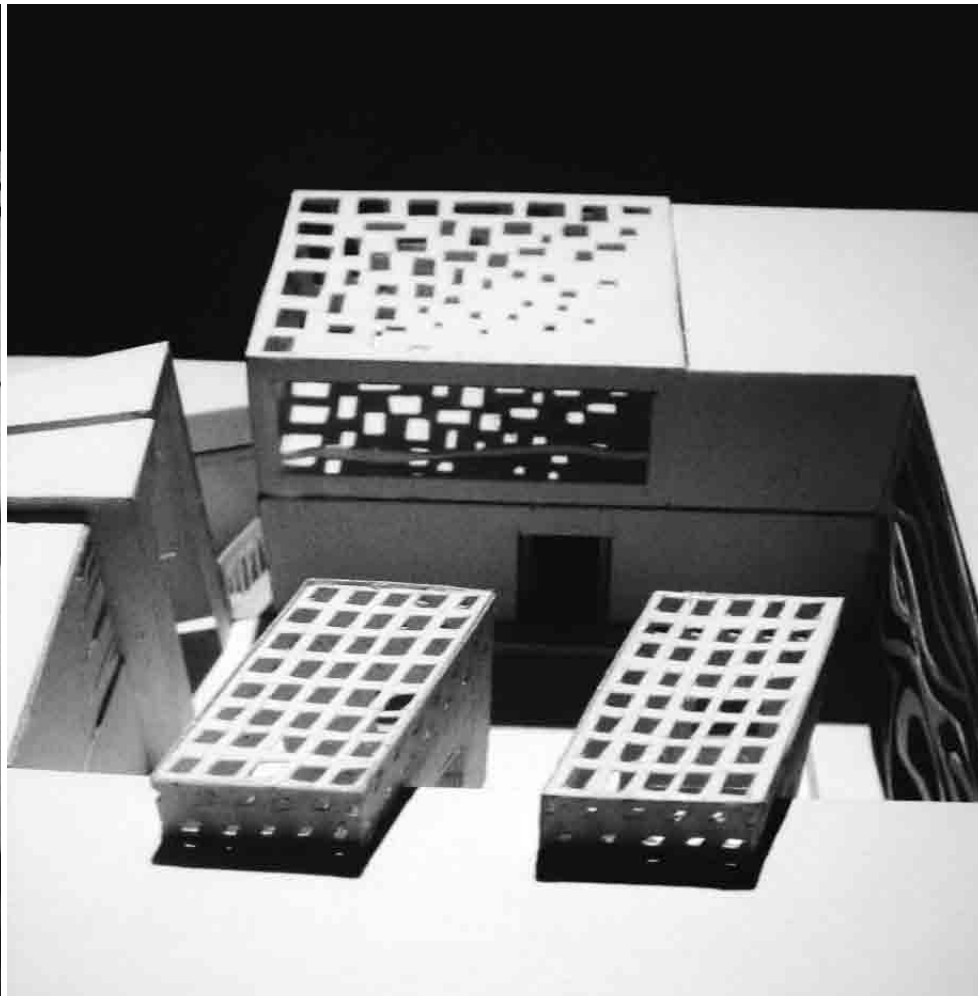
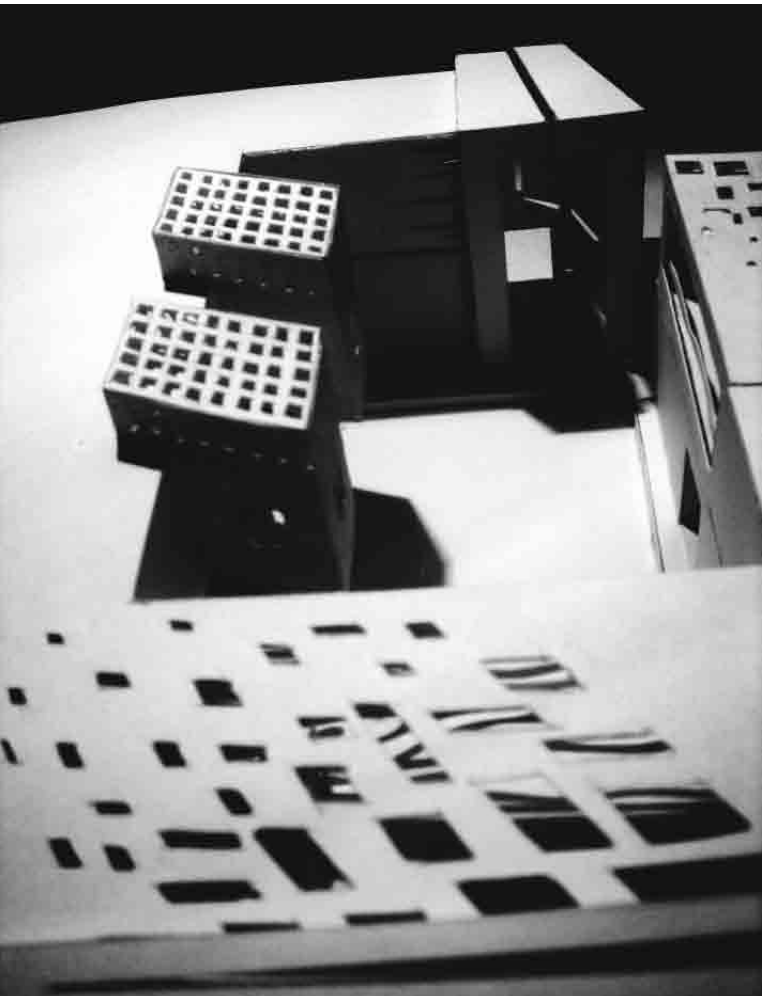
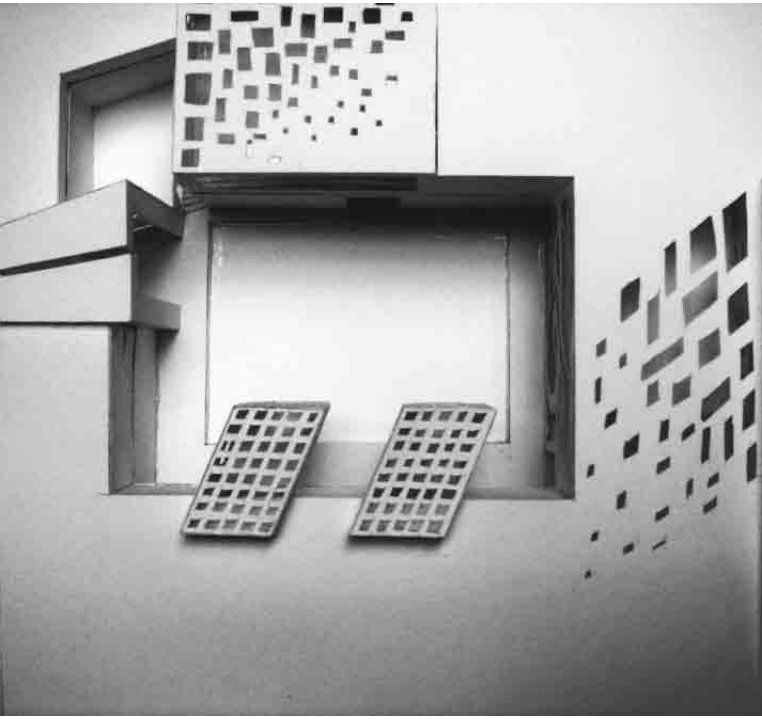
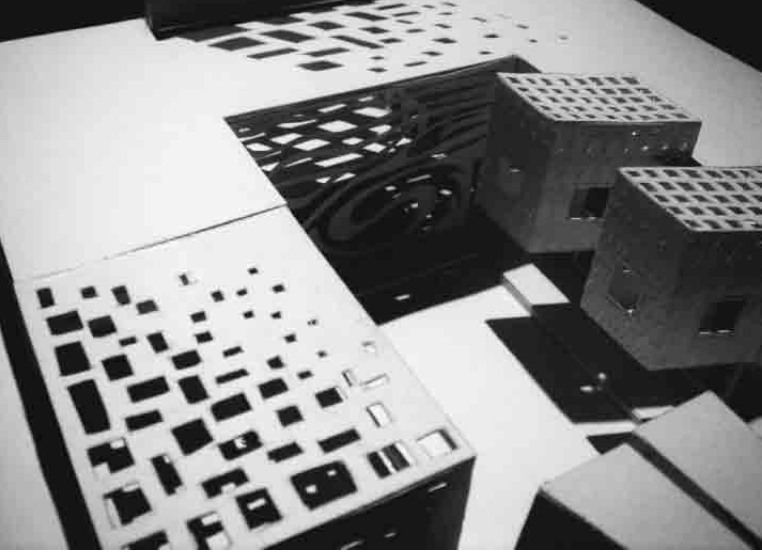
室内布局  
Interior

# A House in Jeddah

## 吉达住宅

The house is to be built on a 28m by 30m site in Jeddah. The design is an attempt to exploit some of the spatial, form vocabulary rooted in local traditional architecture, and use it in a modern context. Paradigms like "Roshan" (bay-window) and open courtyard are merged with "facade painting", terraces and light-shade articulation.





Project Team: Alessandro Calvi Rollino, Micaela Tolio

# A Kindergarten pedagogical Building Filled with Naiveness

## 童趣十足的幼儿园教学楼

The requirement for this project was to build a 6-classroom kindergarten, to be completed in two phases, giving prominence to the existing natural landscape, to the environmental impact, to sustainable building solutions and to pedagogical issues.

The architectural design is strictly influenced by the surrounding landscape; the entire building with its main façade, is oriented toward South because of bioclimatic reasons (radiant heating and solar photovoltaic modules); the space between the façade and an opposite green artificial hill, creates a corridor toward the agricultural

landscape. Outdoor space flowing into the school has a psycho-pedagogical function, since children feel comfortable with the view of a familiar landscape: Learning is made easier. The school is a symbolic centre for the life of the children and it becomes a landmark because of the Rainbow Façade, an element for playing and a stimulus for the fantasy.

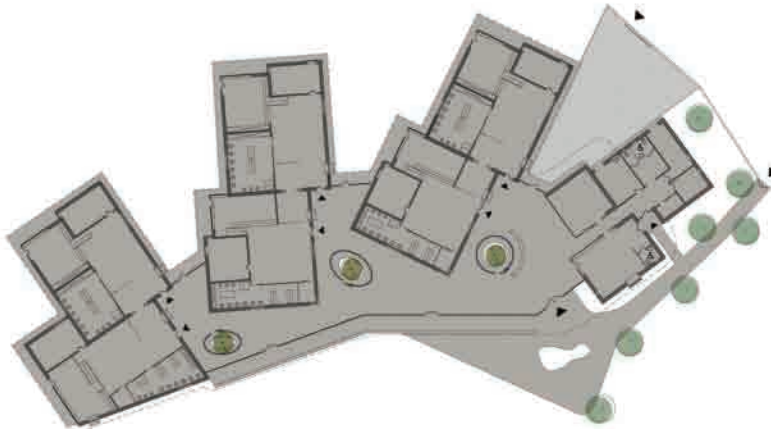
Materials and colors have some pedagogical purposes with particular interest to visual, acoustic, haptic, olfactory and ecological qualities. The activity rooms are set into a higher glass curving volume; their structure is made of timber while the

envelope is made of rough lime plaster and the finishing floor is linoleum; common floor spaces are covered with solid Oak (indoor) and Ipè (outdoor); cladding for the facilities spaces is made of reddish brown copper. Each activity inside the school has an own peculiar space for color and material so that the children easily understand differences and hierarchies among the spaces. The building develops horizontally throughout the allotment: the high glass volume acts as a plaza for common activities while the activity rooms and the facilities spaces (service department, teacher office, parent room, storage) are set into it.





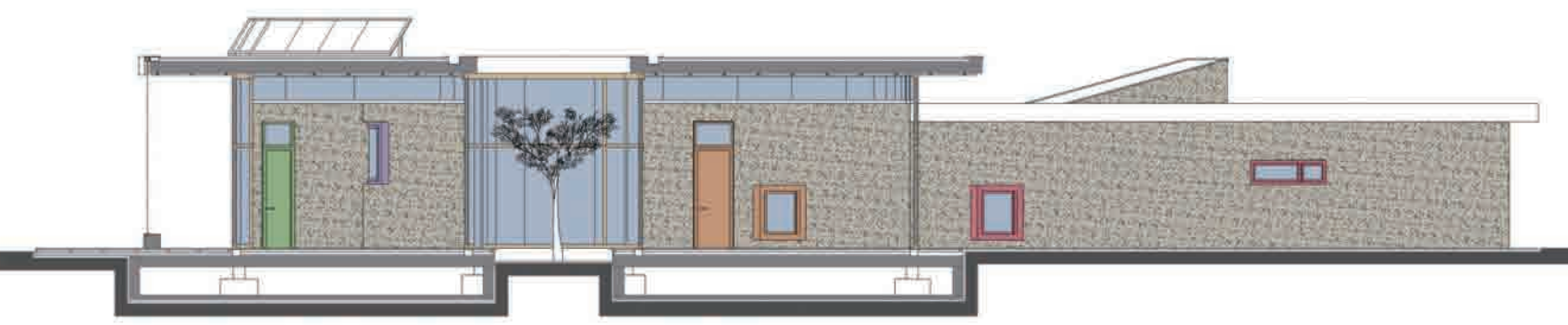
建筑物彩色外观  
The Rainbow Facade



底层平面图  
Ground Floor Plan



南立面  
South Elevation



横截面  
Cross Section

Project Team: Flavio Galvagni, Brian Gallagher, Yasmin Muhsin Client: World Population

# A Novel Carapace House

## 新颖的甲壳住宅

### PROGRAM

The old idea of a "living machine" has been explored with this residential project radically, landing to a solution much depending on mass industry concepts and ship construction processes rather than using their evocative forms to produce a building with traditional materials and methods. Main issues are the pragmatic use of those strategies, the possibility to adapt the house to a variety of radically different environments and domestic scenarios, as well as the need to fulfill high performance requirements. The program explores the nature of site independent architecture and provides an environmentally friendly-low impact dwelling with high living standards and flexible spaces.

### SOLUTION

The C.H. is meant to be a fully autonomous prototype house for a family of four to live in challenging natural environments. The building is raised on legs for lowest rates of footprint usage: the elevation of the body from the ground allows great adaptability to different site conditions and frees an unexpected amount of green space at ground level. The existing topography is left untouched thanks to three mechanical cranes acting as dynamic legs used to support a couple of shipping containers. These elements create the main basic structure of the house capable of pivoting over the legs themselves. Surface walls {blobs} interact with the lower steel structure {boxes} to create the spaces of the house and the partitions within. The blobs are made with composite pre-insulated panels covered with brightly colored glass-fiber layers for full

protection. Outer special glass, which dynamically whiten up if exposed to direct sun for long hours, is combined with common glass to create a "thick active wall" used to stop the solar heating during the day and the cold in winter seasons, ensuring comfortable living conditions in any situation. The entrance door to the house is positioned at ground level. The middle level contains two bedrooms, a study/bedroom and a bathroom/sauna. The top floor is where a multipurpose space reveals its ability to transform itself from an open space into a specific space for living, dining, cooking, watching TV, meditating etc., thanks to a deployable system of devices containing the kitchen facilities, the fan/cooling and the LCD TV.



