



MISS MODEL OF THE WORLD 1988-2008

MISS MODEL OF THE WORLD

第20届世界模特小姐大赛·20年辉煌



深圳出版发行集团
海天出版社



1988-2008

20th Miss Model of the World Contest

第20届世界模特小姐大赛

安娜 主编



深圳出版发行集团
海天出版社

图书在版编目 (CIP) 数据

第20届世界模特小姐大赛·20年辉煌/安娜主编. —深圳: 海天出版社, 2009. 1

ISBN 978-7-80747-505-7

I. 第… II. 安… III. 女性-服装-模特儿-选拔赛-概况-世界 IV. TS942. 5

中国版本图书馆CIP数据核字 (2008) 第203452号



1988-2008
20th Miss Model of the World

第20届世界模特小姐大赛·20年辉煌

DIERSHIJIESHIJIEMOTEXIAOJIEDASAIERSHINIANHUIHUANG

出品人 陈锦涛
策 划 于冬风
责任编辑 谢 芳
责任技编 钟愉琼

出版发行 海天出版社
地 址 深圳市彩田南路海天大厦 (518033)
网 址 www.htph.com.cn
订购电话 0755-83460137 (批发) 83460397 (邮购)
印 刷 深圳市森广源印刷有限公司
开 本 889×1194 1/16
印 张 6.5
版 次 2009年1月第1版
印 次 2009年1月第1次
印 数 1-4000册
定 价 48.00元

海天版图书版权所有, 侵权必究。

海天版图书凡有印装质量问题, 请随时向承印厂调换。





C 中意安娜缔造时尚之美
Create Fashion Beauty



“世界模特小姐大赛”与世界小姐大赛、环球小姐大赛并称为世界女性三大顶级赛事。“世界模特小姐大赛”从1988年创办，至今已成功举办了20届，20年来，全世界已有9000多位模特小姐参加了该项大赛，“世界模特小姐大赛”既有国际化模特的专业评比程序，又有娱乐选美的文化内涵。

Miss Model of the World, Miss World and Miss Universe are recognized as top three beauty pageant contests in the world. “Miss Model of the World” contest was launched in 1988 and have been successfully held for 20 times. There have been more than 9000 Miss Models from all the world to participate in the contest which have not only professional evaluation procedure for International Miss Models but also have cultural connotation of entertainment Beauty Selection.

CHIEF EDITOR

主 编

安 娜 Anna

HONORABLE CHIEF EDITOR

名誉主编

苏哈·奥佩里 Suha Alpayli

ARTISTIC DESIGN

艺术设计

吴建好 Wu Jianhao

王 艳 WangYan

CHIEF EDITOR UNIT

主编单位

深圳市中意安娜文化传播有限公司

Zhongyi Anna (Shenzhen) Culture Co., Ltd



苏哈·奥佩里 先生

MR.SUHA

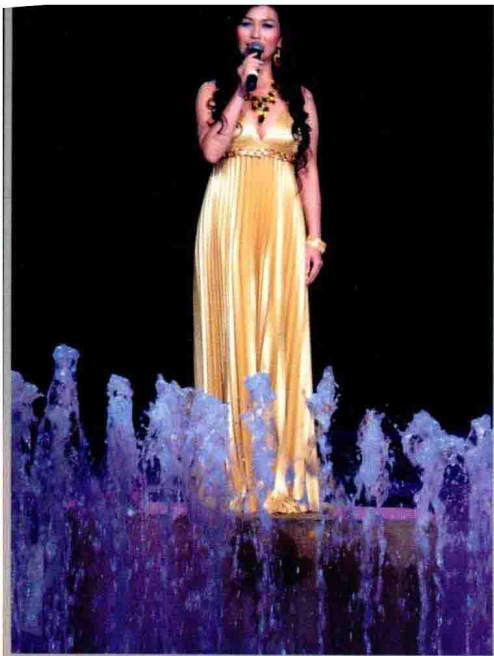
- ▲ 世界模特小姐大赛创始人
Founder of "Miss Model of the World Contest"
- ▲ 世界模特小姐国际组织机构主席
Chairman of "Miss Model of the World International Organization"
- ▲ 世界模特小姐大赛国际评审团主席
Chairman of International Jury of "Miss Model of the World" Contest

“世界模特小姐大赛”于1988年创立于土耳其的伊斯坦布尔，创始人和主席是享誉欧美模特界的知名人士MR.Suha Alpayli（苏哈·奥佩里）先生。苏哈·奥佩里先生是土耳其人，他1954年毕业于土耳其海军学院，1957年赴美国密歇根大学学习建筑工程，1962年回国后在土耳其海军服役，1972年退伍后开始经商，1988年策划了“首届世界模特小姐大赛”。大赛已成功举办了20届，如今已成为世界模特比赛中最知名的国际大赛品牌之一。

"Miss Model of the World" contest was launched in Istanbul of Turkey in 1988. It's founder & chairman is Mr.Suha Alpayli who is well-known in modelling circles of Europe & America. Mr. Suha was born in Turkey and graduated from Turkey Navy Institute in 1954. In 1957, Mr. Suha went to Michigan University of USA to study construction engineering and went back to his homeland to serve Turkey Navy in 1962. After leaving Turkey Navy in 1972, Mr. Suha began to engage in business. In 1988, he contrived the first "Miss Model of the World" Contest which have been successfully held for 20 times until now. Nowadays, "Miss Model of the World" Contest have become one of the most famous model contests among the ones of all the world.







安娜 ANNA

CHAIRMAN 主席





- ▲ 世界模特小姐大赛品牌继承人
Trademark Successor of "Miss Model of the World Contest"
- ▲ 世界模特小姐国际组织机构执行主席
Executive Chairman of "Miss Model of the World International Organization"
- ▲ 第20届世界模特小姐大赛国际总决赛组委会主席
Chairman of Organizing Committee of 20th Miss Model of the World International Final Contest
- ▲ 中意国际集团(香港)有限公司董事长
Chairman of Zhongyi International(HK) Group Co.,Ltd
- ▲ 深圳市中意安娜文化传播有限公司董事长
Chairman of Zhongyi Anna (Shenzhen) Culture Co.,Ltd

安娜小姐具有印度尼西亚和中国的双重血统。从小习舞使得她具有优秀的艺术素养，天生对美丽事业的热爱和家族浓厚丰富的国际贸易经验，使她投身了“世界模特小姐大赛”这项美的事业。

2005年，她将这项美丽赛事带到了深圳，“第17届世界模特小姐大赛暨深圳首届国际旅游文化节”取得圆满成功。2006年，大赛创始人苏哈先生宣布安娜小姐成为大赛的唯一合法继承人和国际组织机构执行主席。自此，安娜小姐开始了她在中国创造这项“美丽事业”的又一段新征程。

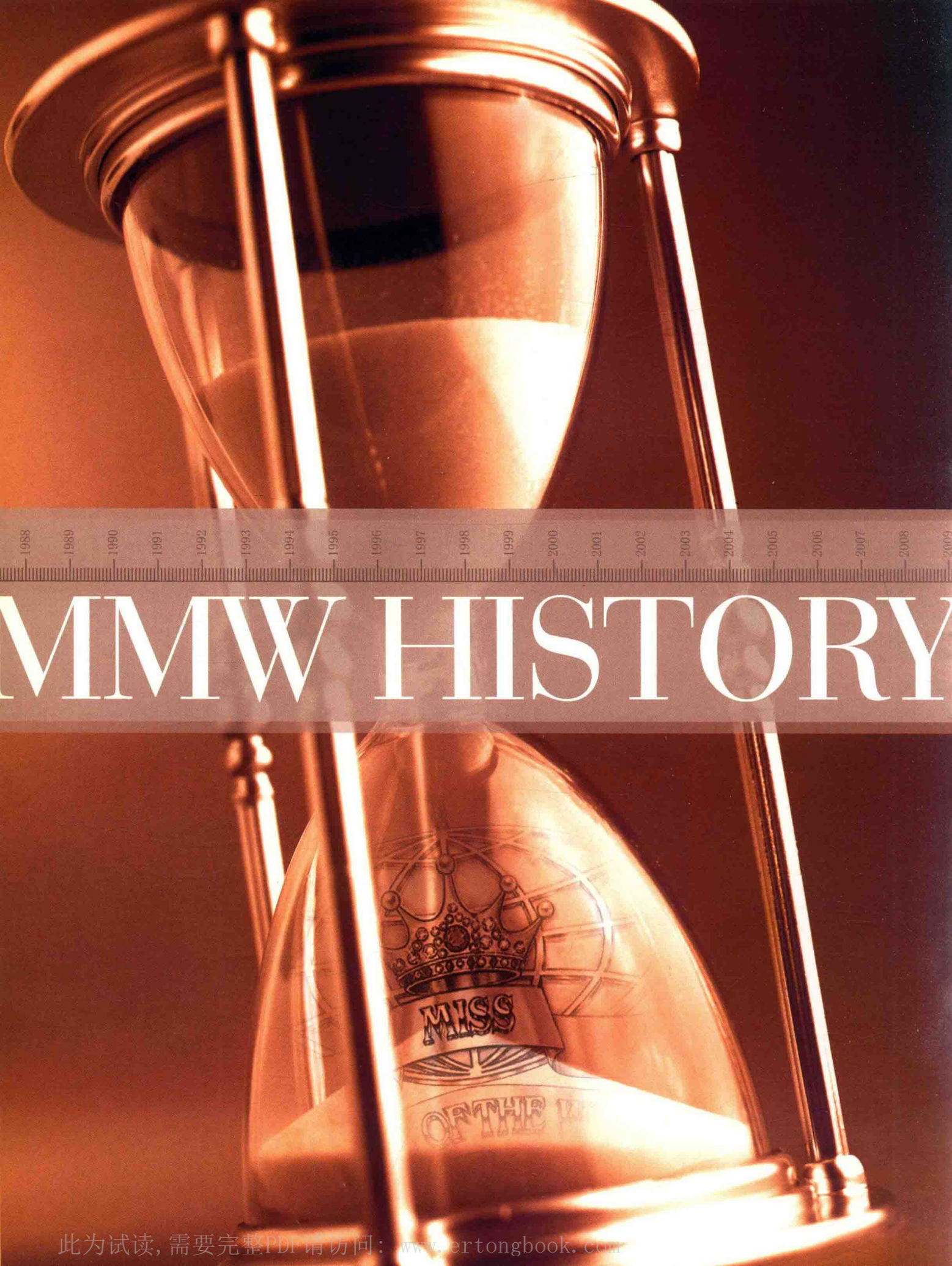
2006年和2007年，“世界模特小姐大赛”相继在深圳市和山西运城市举办，取得了空前的轰动和圆满成功！2008年，在中国的腾飞年，“第20届世界模特小姐大赛国际总决赛”再次落户深圳，取得突破和成功，为大赛辉煌的20年续写了一个新的篇章。

安娜小姐正以她全心的投入和执着为这项美丽的事业奋斗着，人们必将以最真诚的掌声和祝福回报给这位给我们带来美丽和欢乐的“使者”！

Chairwoman Anna have double bloodline from Indonesian and Chinese. She unswervingly devotes herself into the Beauty Career of MMW Contest due to her born nature and splendid artistic accomplishments acquiring from practicing dancing since childhood as well as the international trade gift inheriting from family.

In 2005, she introduced this Beauty Contest to Shenzhen city. "The 17th MMW contest and Shenzhen First International Tourism & Cultural Festival" was successfully held. In 2006, Mr. Suha, founder of MMW contest, declared that Miss Anna became the sole legitimate successor&Executive Chairman of MMW Contest International Organization. From then on, Miss Anna started her new attempt to actively forward this Beauty Career in China. In 2006 and 2007, MMW contests were one after the other separately held in Shenzhen and Yuncheng city in Shanxi province, both the contests achieved stirring effect and consummation! In 2008, which is China's soaring year, 20th MMW International Final Contest once more settled down in Shenzhen and gained success and breakthrough that wrote down a new chapter in the resplendent 20 years' history of MMW contests.

Now, Miss Anna is unswervingly devoting all her life to strive for the development of this Beauty Career. People would reward the "envoy" who brings us beauty and happiness with sincere applause and best wishes!



1988 1989 1990 1991 1992 1993 1994 1995 1996 1997 1998 1999 2000 2001 2002 2003 2004 2005 2006 2007 2008 2009

BMW HISTORY



>1988-1989



>1989-1990



>1990-1991



>1991-1992



>1992-1993



>1993-1994



>1994-1995



>1995-1996



>1996-1997



>1997-1998



>1998-1999



>1999-2000



>2000-2001



>2001-2002



>2002-2003



<
2003-2004
中国 杭州 HANGZHOU CHINA



>
2004-2005
中国 深圳 SHENZHEN CHINA



<
2005-2006
中国 深圳 SHENZHEN CHINA

2006-2007
中国 运城 YUNCHENG CHINA



2007-2008
中国 深圳 SHENZHEN CHINA



Visual Feast

2008国际风尚大融合的

视觉盛宴

2008年11月22日晚，第20届世界模特小姐大赛国际总决赛颁奖晚会在
中国·深圳盛大举行。来自全球61个国家和地区的世界模特小姐在这
个沸腾的夜晚如花朵一样尽情地绽放自己的美丽，展示自己的美艳和才
艺，为秋日的深圳演绎了一场国际顶级时尚视觉盛宴。

On the evening of Nov.22,2008, Reward Ceremony of 20th MMW International
Final Contest was solemnly held in Shenzhen of China. In the boiling night, Miss
Models from 61 countries and zones blossomed like flowers to fully show their
beauty and demonstrated their talent. Their splendid performance presented
autumnal Shenzhen a visual feast of top international fashion.



