

# 中國公路交通圖表彙覽

## HIGHWAYS IN CHINA

---

Tables, Charts and Maps

全國經濟委員會公路處編

BUREAU OF ROADS  
NATIONAL ECONOMIC COUNCIL  
NANKING, CHINA

---

中華民國二十五年五月增訂  
MAY, 1936

# TABLE OF CONTENTS

## INTRODUCTION

1. Highway Photos.
2. General Information.
3. Length of Highways in China by Provinces as of December, 1935.
4. Progress of Highway Construction in China Since 1921.
5. Highways Open to Traffic and Those under Construction in the Provinces of China.
6. Ratio between Length of Highways Open to Traffic & Area of the Provinces of China as of December, 1935.
7. Present Status of the Inter-Provincial Highways in the Provinces of Kiangsu, Chekiang, Anhwei, Kiangsi, Hupeh, Hunan, Honan, Fukien, and in the Northwest. December, 1935.
8. Progress of the Inter-Provincial Highways in the Provinces of Kiangsu, Chekiang, Anhwei, Kiangsi, Hupeh, Hunan, Honan, Fukien, and in the Northwest Since 1932.
9. Amount of Loans Extended by the National Economic Council to the Different Provinces From 1932 to 1935.
10. Chart Showing the Accumulative Amount of Loans Extended by the National Economic Council to the Different Provinces Since 1932.
11. Estimated Cost per Kilometer of Highway Construction.
12. Table used for Checking the Unit Cost of Estimate of Highway Construction Submitted by the Provinces.
13. Cost of Construction & Maintenance for Different Types of Pavements on the First Experimental Road.
14. Cost of Construction of the Inter-Provincial Highways in Kiangsu Province.
15. Cost of Construction of the Inter-Provincial Highways in Chekiang Province.
16. Cost of Construction of the Inter-Provincial Highways in Anhwei Province.
17. Cost of Construction of Sian-Langchow Highway.
18. Cost of Construction of Sian-Hanchung Highway.
19. Expenses for Highway Surveying Made by Bureau of Roads, N.E.C.
20. Costs of Different Means of Transportation in China.



21. Passenger & Freight Traffic on the Inter-Provincial Highways of Kiangsu, Chekiang, Anhwei, Kiangsi, Hupeh, Hunan, and Honan.
22. Traffic Census on the Inter-Provincial Highways of Kiangsu, Chekiang and Anhwei.
23. Passenger Fare, Freight Rate & Operating Cost of Motor Busses in Some Provinces of China.
24. Automotive Census of China as of April, 1936.
25. Number of Motor Vehicles in China & Other Countries in 1934.
26. Ratio of Population to Motor Vehicles in China & Other Countries in 1934.
27. The Length of Highways & Area to One Km. of Highway in China & Some Other Countries in 1934.
28. Motor Cars & Accessories Imported into China Since 1922.
29. The Number of Licenced Automobile Drivers in the Provinces of Kiangsu, Chekiang, Anhwei, and the Municipalities of Nanking and Shanghai.
30. Licence Fees Charged on Motor Vehicles in Shanghai Municipality.
31. Licence Fees Charged on Motor Vehicles in Chekiang Province.
32. Licence Fees Charged on Motor Vehicles in Kiangsu Province.
33. Licence Fees Charged on Motor Vehicles in Anhwei Province.
34. Licence Fees Charged on Motor Vehicles in Nanking Municipality.
35. Licence Fees Charged on Motor Vehicles by the Northwestern National Highways Administration.
36. Chart Showing the Amount of Major Petroleum Products Imported into China.
37. Private Bus Companies in the Provinces of Kiangsu, Chekiang and Anhwei.
38. Consumption of Oil by Busses in Chekiang Province in 1934.
39. Consumption of Oil by Trucks in Chekiang Province in 1934.
40. Consumption of Oil by Passenger Cars in Chekiang Province in 1934.
41. Yield & Export of Cotton Seed & Cotton Seed Oil, 1919-1934.
42. Diagram Showing the Yield & Export of Cotton-Seed in China, 1919-1934.
43. Diagram Showing the Estimated Yield & Export of Cotton-Seed Oil in China, 1919-1934.
44. Production & Consumption of Charcoal in Anhwei, Hunan, Chekiang, and Honan in 1934.
45. Production & Unit Cost of Charcoal in Anhwei, Hunan, Chekiang, & Honan.

# 引 言

公路建設之有裨於政治軍事經濟文化，昭然若揭，中國近十年來建築公路，頗具成績，自全國經濟委員會主持督造以來，更呈突飛猛晉之象，凡關於全國公路系統之規劃，工程標準及預算之釐訂，均作精密之規定，俾各省築路，日漸趨於整齊劃一聯絡貫通之途，而由中央撥借各省築路基金，減輕地方負擔，尤為促進路工莫大之助力，故全國公路交通，大有與日俱進之勢，此後倘能廣續邁進，預料前途，當更有無限之發展，茲將有關公路各項統計分別製成圖表，彙訂成冊，藉供關心路政者之參覽焉。

中華民國廿四年四月

## 再 版 附 言

本書於廿四年四月刊行後，不數月而罄，特再訂正，并由本會統計室協助，增益新圖表多幅，刊為第二版，惟纂輯容有未週，缺漏之處，倘望閱者加以指正，俾臻完善，幸甚！

中華民國二十五年四月

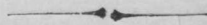


## INTRODUCTION

It is generally understood that highway construction is intimately concerned with the political, economic and cultural development of a country. During the past decade the building of highways has attained considerable success in China. The progress has been particularly remarkable since the National Economic Council took up the task into its hands. To obtain uniformity in the construction of highways in various provinces and to secure proper relationship among them, the Council has drawn up detailed plans for highway systems, fixed the engineering standards and prepared the estimates. The lending of funds to the provinces for highway construction has further lessened the responsibility of the local authorities and thereby accelerated the progress which will evidently continue in the future.

The following pages contain tables, charts and maps in relation to highways in China which, it is hoped, will serve as a reference for those who are interested in the development of highways in this country.

April, 1935



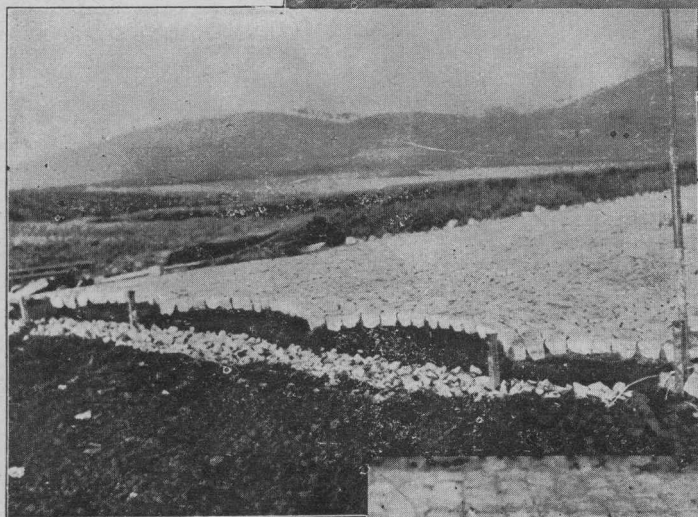
## NOTE TO THE SECOND EDITION

In the present edition most of the contents have been revised and brought up to date, and considerable additions are made. Any criticism or correction will be gratefully received and appreciated.

April, 1936

第一試驗路  
混凝土軌路→

CONCRETE TRACK  
ON THE FIRST  
EXPERIMENTAL  
ROAD CONSTRUCTED  
BY N. E. C.



← 第一試驗路摩賽克石塊路

MOSAIC STONE BLOCK  
PAVEMENT ON THE FIRST  
EXPERIMENTAL ROAD

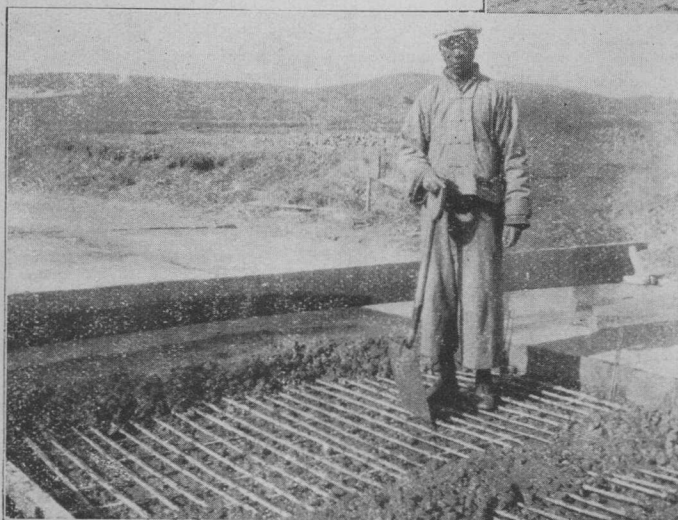
第一試驗路石塊路→  
STONE SETT PAVEMENT  
ON THE FIRST  
EXPERIMENTAL ROAD





第一試驗路青磚路→

COMMON BRICK PAVEMENT  
ON THE FIRST  
EXPERIMENTAL ROAD



← 第一試驗路混凝土路之竹筋

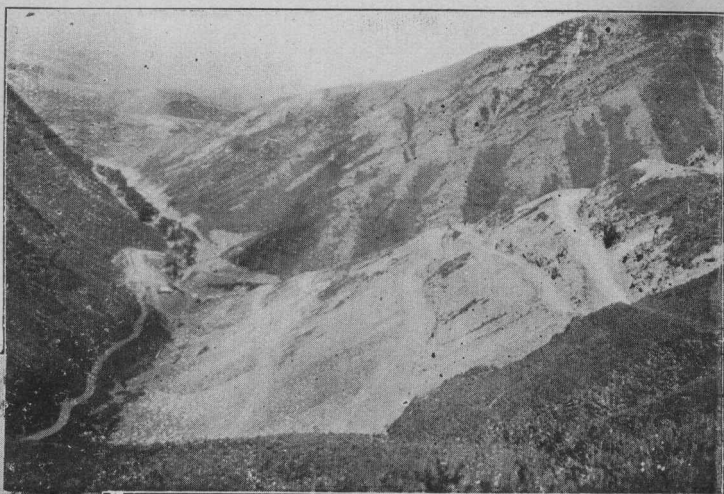
BAMBOO REINFORCEMENT  
OF THE CONCRETE PAVEMENT  
ON THE FIRST  
EXPERIMENTAL ROAD

第二試驗路—  
泥結碎石路面澆油→

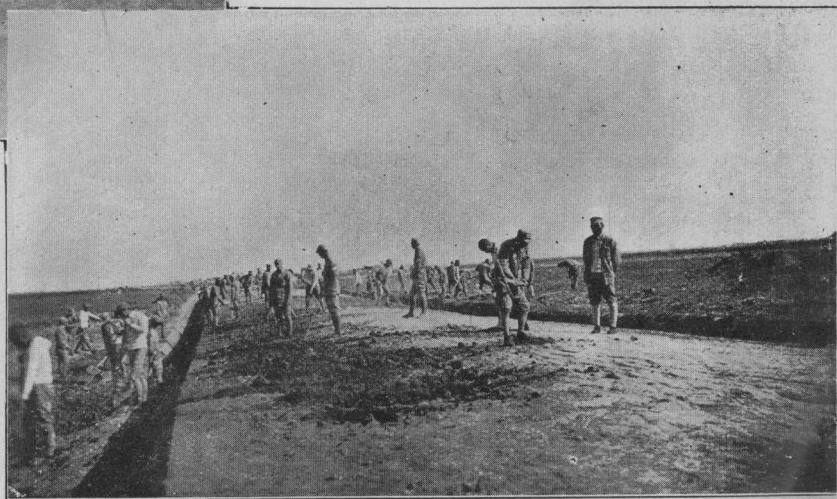
THE SURFACE  
TREATMENT OF THE  
CLAY-BOUND MACADAM  
ON THE SECOND  
EXPERIMENTAL ROAD



西蘭路六盤山路線→  
THE SIAN-LANCHOW HIGHWAY  
LOOPS ON LIU PAN MOUNTAIN

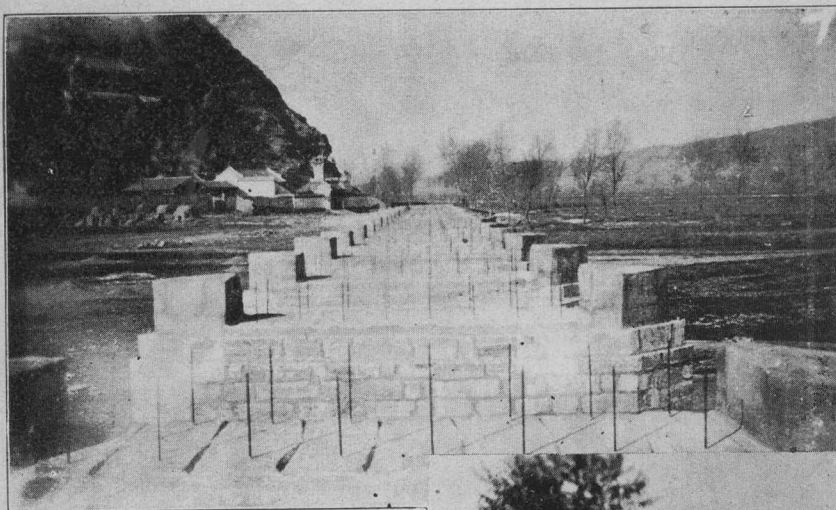


← 西蘭公路平原近郊之一瞥  
A SECTION OF THE SIAN-LANCHOW  
HIGHWAY NEAR PINGLIANG



西蘭公路之兵工↑  
SOLDIERS AT WORK ON THE SIAN-LANCHOW HIGHWAY

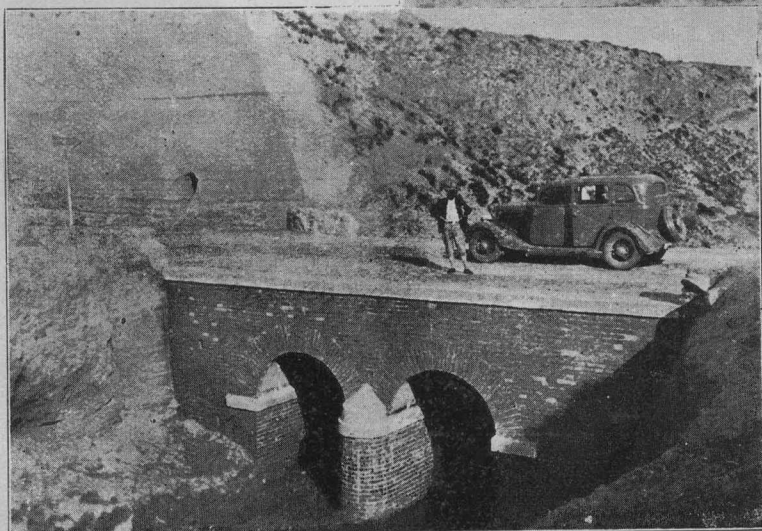
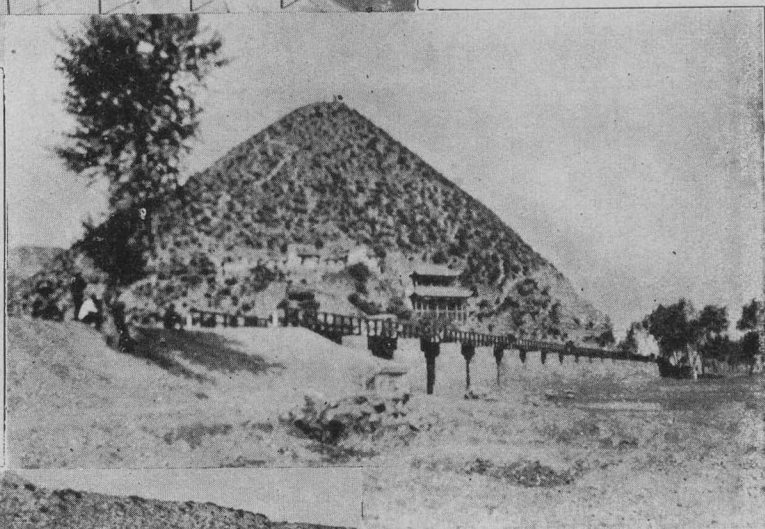




← 西蘭路涇川橋  
之已成橋墩

THE KING-CHWAN BRIDGE  
ON THE SIAN-LANCHOW  
HIGHWAY UNDER  
CONSTRUCTION

完成後之涇川橋→  
THE KING-CHWAN BRIDGE  
AFTER COMPLETION

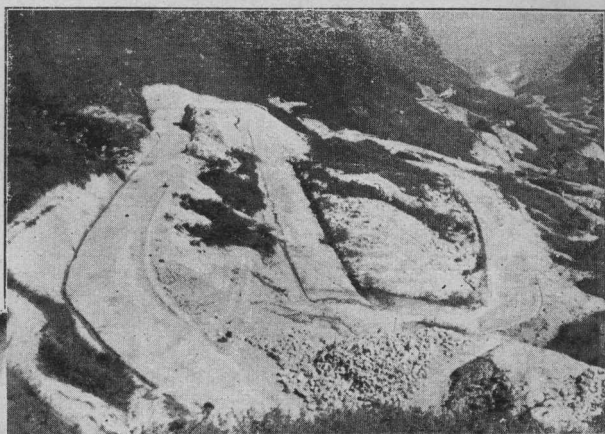


← 西蘭路磚拱涵洞

A BRICK CULVERT ON THE  
SIAN-LANCHOW HIGHWAY

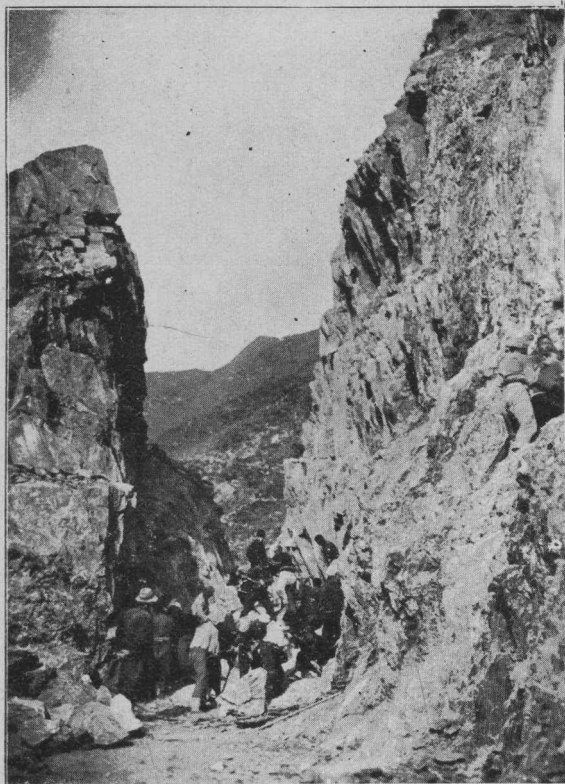
西漢路秦嶺之盤山路線→

LOOPS ON THE  
SIAN-HANCHUNG HIGHWAY



←西漢公路開山工程之一部

A THROUGH-CUT WORK UNDER  
CONSTRUCTION ON THE  
SIAN-HANCHUNG HIGHWAY



西漢公路第二號山洞→

A TUNNEL UNDER CONSTRUCTION ON  
THE SIAN-HANCHUNG HIGHWAY





西漢公路雞頭關山洞 →

THE KI-TOW-KWAN TUNNEL  
ON THE SIAN-HANCHUNG  
HIGHWAY UNDER  
CONSTRUCTION



← 西漢公路山邊鑿石之一部

THE HILL-SIDE ROCK-CUTTING ON  
THE SIAN-HANCHUNG HIGHWAY

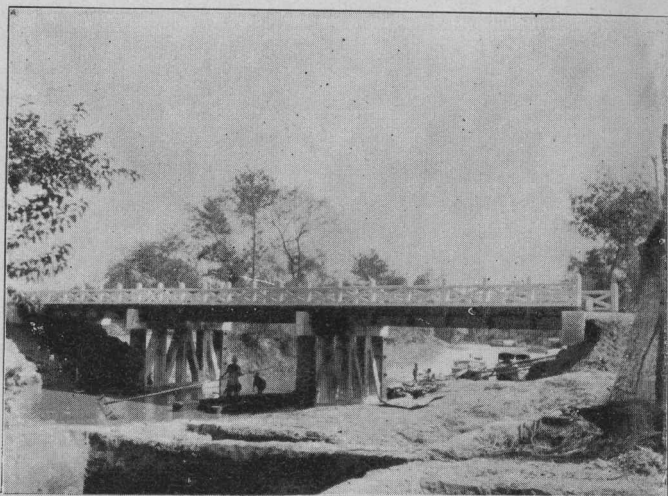
西漢公路沿山路線之一部 →

THE SIAN-HANCHUNG HIGHWAY  
RUNNING ALONG HILL SIDE



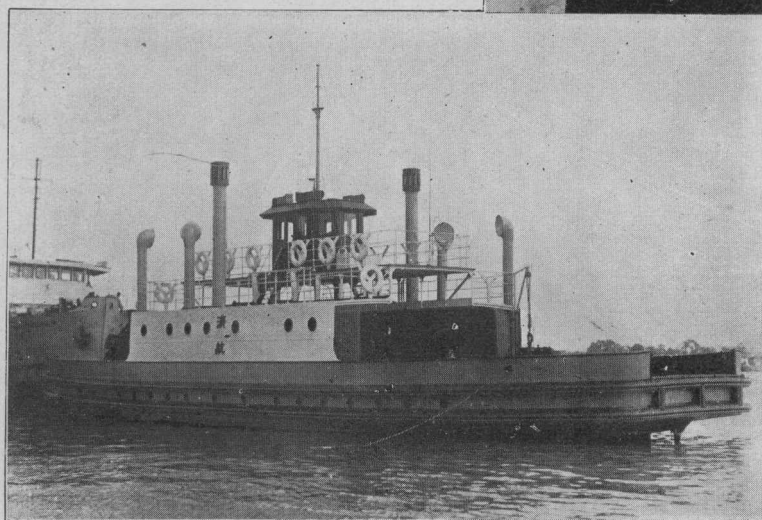
江蘇六揚路金家橋→

THE KING KIA BRIDGE ON THE  
LIUHO-YANGCHOW HIGHWAY  
IN KIANGSU PROVINCE



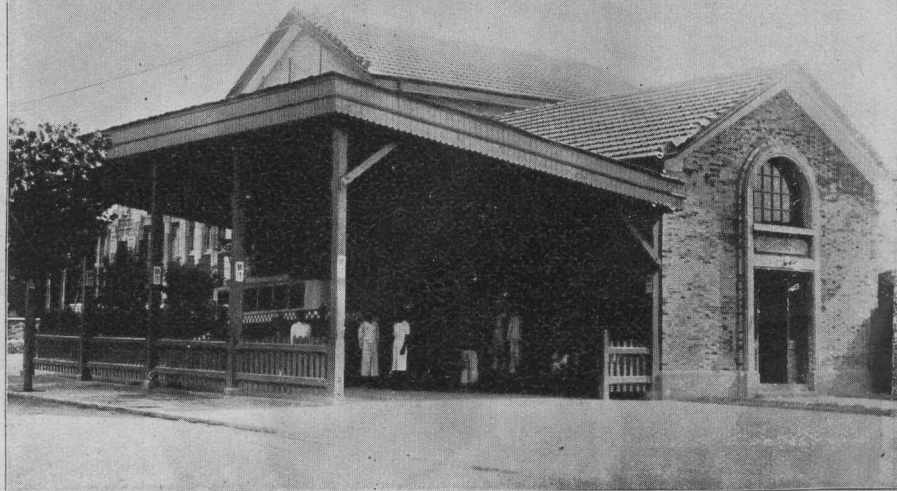
← 滬杭路閔行汽車渡輪

A FERRY BOAT AT  
MINGHONG ON THE  
SHANGHAI-HANGCHOW  
HIGHWAY IN  
KIANGSU PROVINCE



鎮江汽車站→

THE BUS STATION  
AT CHINKIANG  
IN KIANGSU  
PROVINCE





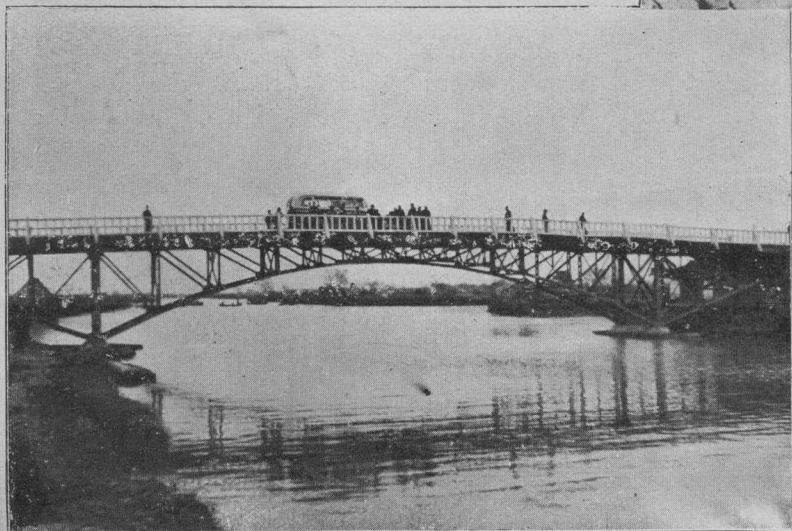


← 浙江京杭路吳興  
附近之鋼架橋

A STEEL TRUSS BRIDGE  
ON THE NANKING-HANGCHOW  
HIGHWAY IN  
CHEKIANG PROVINCE



浙江縉麗路牛厄灘飛橋→  
A REINFORCED CONCRETE TRESTLE BRIDGE  
ON THE TSINYUAN-LISHUI HIGHWAY IN  
CHEKIANG PROVINCE



← 浙江平嘉路之蕭山門橋

A CANTILEVER STEEL  
BRIDGE ON THE  
PINGHU-KASHING HIGHWAY  
IN CHEKIANG PROVINCE

安徽省宣甯段  
公路石拱橋→

A STONE ARCH BRIDGE  
ON THE  
SUANCHENG-NINGKWO  
HIGHWAY IN  
ANHWEI PROVINCE



← 杭徽公路盤山路線之一部

A LOOP ON THE HANGCHOW-  
HWEICHOW HIGHWAY

杭徽公路之交通標誌  
與長途汽車→

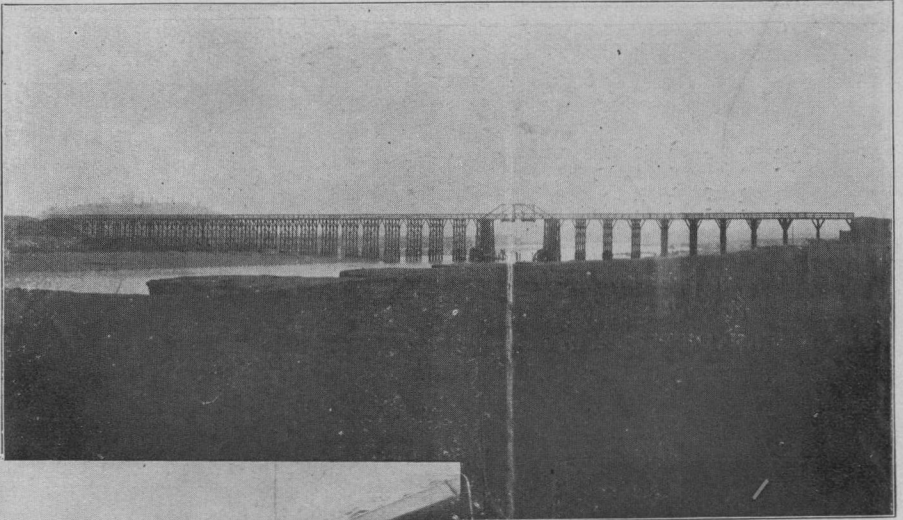
SCENE ON THE HANGCHOW-  
HWEICHOW HIGHWAY





江西滬桂幹線  
餘江大橋→

THE YUKIANG  
BRIDGE ON  
SHANGHAI-KWANGSI  
HIGHWAY IN  
KIANGSI PROVINCE



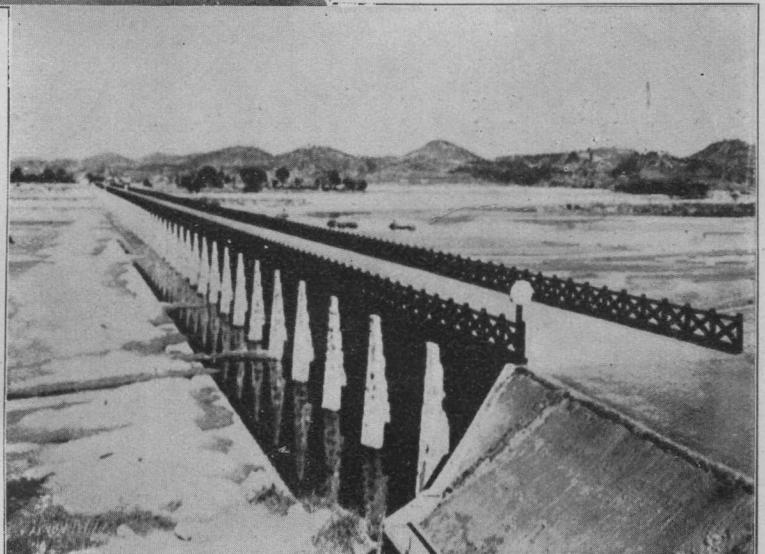
← 江西南昌總站車庫

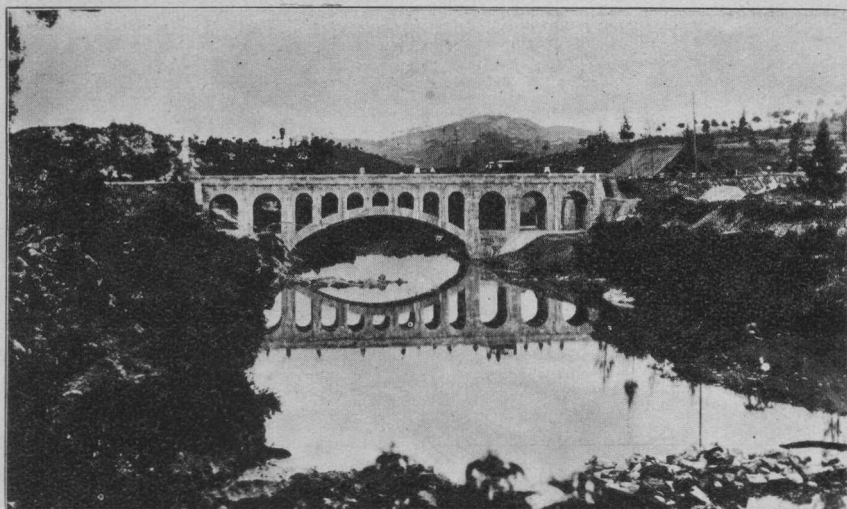
THE GARAGE OF NANCHANG  
BUS STATION IN  
KIANGSI PROVINCE



湖北浠廣路西河驛大橋→

THE SIHOI BRIDGE ON THE  
SISHUI-KWANGTZI HIGHWAY  
IN HUPEH PROVINCE





← 湖南寶洪公路白竹橋

AN ARCH BRIDGE  
ON THE PAOKING-  
HUNGKIANG HIGHWAY  
IN HUNAN PROVINCE

湖南潭寶公路永豐橋→

A BOWSTRING BRIDGE ON  
THE SIANGTAN-PAOKING  
HIGHWAY IN  
HUNAN PROVINCE



← 湖南黃平段箬埠嶺天橋

A GRADE SEPARATION  
ON THE HWANGHUASI-  
PINGKIANG HIGHWAY IN  
HUNAN PROVINCE



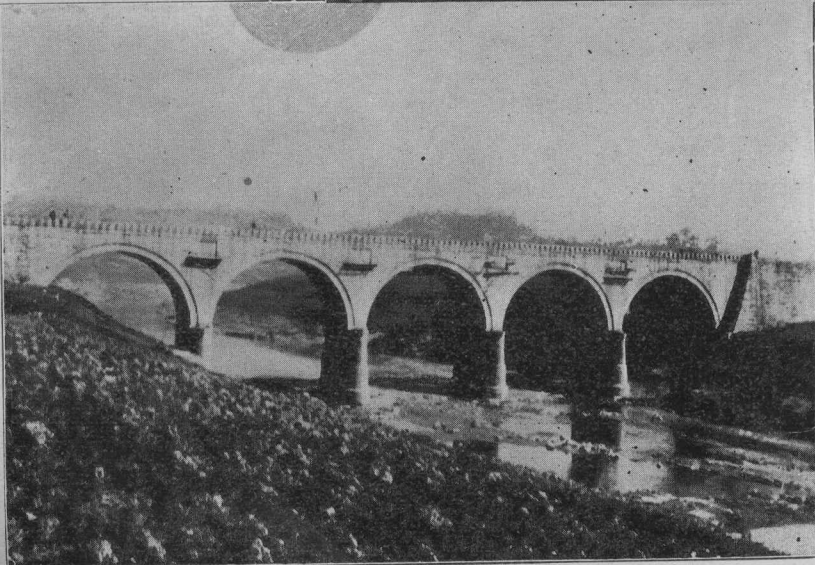
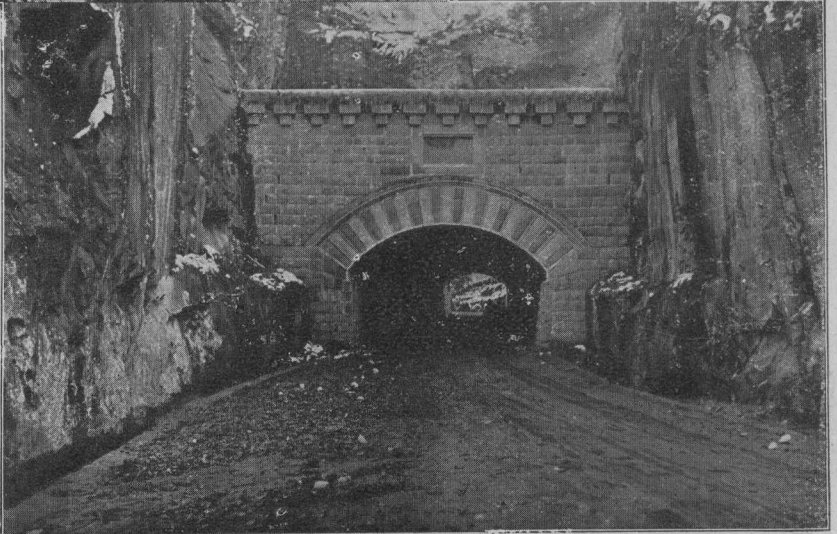


← 四川成渝公路之一段

A SECTION OF THE  
CHENG TU-CHUNGKING  
HIGHWAY IN  
SZECHWAN PROVINCE

四川成渝路之山洞 →

A TUNNEL ON THE  
CHENG TU-CHUNGKING  
HIGHWAY IN  
SZECHWAN PROVINCE



← 四川成渝路利川大橋

THE LICHWAN BRIDGE  
ON THE CHENG TU-  
CHUNGKING HIGHWAY  
IN SZECHWAN PROVINCE