

# Landscape Details Design

## 景观细部设计手册(I) Manual

佳图文化 / 编



华中科技大学出版社  
<http://www.hustpas.com>



TU-856/J2201:1

# Landscape Details Design

景观细部设计手册(I) Manual

佳图文化 / 编



208251906



华中科技大学出版社

<http://www.hustpas.com>



## 图书在版编目 (CIP) 数据

景观细部设计手册 I / 佳图文化 编.  
—武汉: 华中科技大学出版社, 2010. 9  
ISBN 978-7-5609-6354-9

I. ①景… II. ①佳… III. ①景观—环境设计: 细部设计—手册 IV. ①TU-856

中国版本图书馆CIP数据核字 (2010) 第119711号

景观细部设计手册 I

佳图文化 编

---

出版/发行: 华中科技大学出版社  
地 址: 武汉市珞喻路1037号 (邮编: 430074)  
出 版 人: 阮海洪  
策 划: 李伟光  
责 任 编 辑: 段建姣  
责 任 监 印: 秦 英  
印 刷: 利丰雅高印刷 (深圳) 有限公司  
开 本: 965mm×1270mm 1/16  
印 张: 17.5  
字 数: 200千字  
版 次: 2010年9月第1版  
印 次: 2010年9月第1次印刷  
书 号: ISBN 978-7-5609-6354-9/TU·882  
定 价: 248.00元 (US \$ 54.99)

---

销售电话: 022-60266190, 022-60266199, 010-64155566 (兼传真)

网 址: [www.hustpas.com](http://www.hustpas.com), [www.hustp.com](http://www.hustp.com)

(本图书凡属印刷、装帧错误, 可向承印厂或发行部调换)



## Preface

---

With the gradual deepening of China's reform and opening and rapid development of economy, people have increasingly higher demand for the quality of living environment. In recent years, landscape industry has become another new hotspot of domestic design industry driven by the development of property. Moreover, for the influence of this trend, domestic colleges of art, agriculture & forest and architecture have established landscape department or enlarged recruitment scale.

The *Landscape Details Design Manual* mainly introduces the composition of landscape details and all the pictures have been well chosen from the practical engineering cases of many world-class landscape design companies. All the works introduced here are the latest representative works of masters, such as Belt Collins, Edaw, Earthasia, EDSA, Aoya and so on. In the book, the representative works of these famous companies are classified according to various elements including gate, bounding wall, guardrail, waterscape, flowerpot, sculpture, pavilion, corridor, trellis, bridge, seat, paving and partial view, etc. The chosen works of each element can stand for the top level of modern landscape design.

The works collected in this book are all valuable results of hard creators. Their original appearances and features are well preserved in order to respect the hard work of every creator.

Since the works in this book are collected widely, it is impossible for us to note them or acknowledge their designers one by one. We hereby express our thanks to those people who provide these materials and hope this book can be a reference book for landscape designers.

Editor  
Jun, 2010

## 前言

---

随着中国改革开放的逐步深入和经济发展的突飞猛进，人们对生活环境品质的需求日趋提高。近几年，景观行业受到房地产行业发展的带动而跃升为国内设计行业中的新热点。进而促成国内很多美术、农林以及建筑城规院校纷纷增设景观专业，或扩大招生规模。

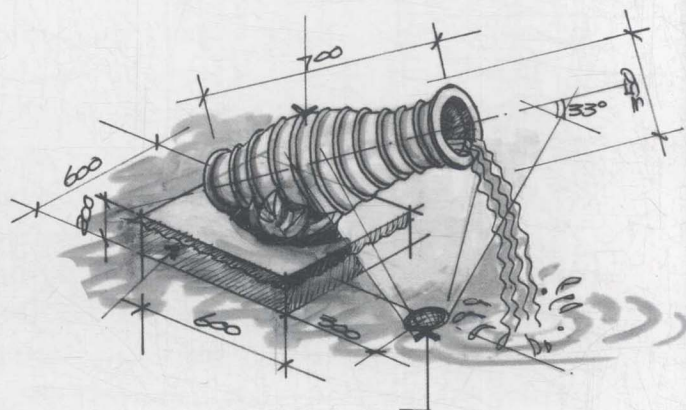
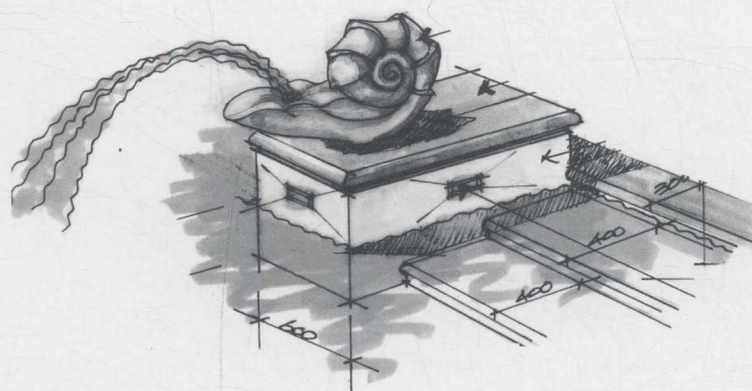
这本《景观细部设计手册》重点介绍景观细部构成，所挑选图片均是从大量的国际顶级景观公司的实施工程案例里精选出来的，是大师级的最新经典代表作品，如贝尔高林、易道、泛亚、EDSA、奥雅等公司的代表之作，书中内容按元素分门别类进行介绍，包括大门、围墙、栏杆、水景、花钵、雕塑、亭、廊、花架、桥、座椅、铺地以及局部景观等，每种类别所选资料都力求能代表当今景观设计的最高水平。

书中收录的内容全部都是创作者心血的结晶，为尊重每位创作者的劳动，我们选用的作品均保持了其真实的面貌与原创特色。

由于本书资料来源广泛，无法一一列及，也无法对设计者一一表示答谢。在此谨向这些资料的提供者表示最诚挚的谢意！希望本书具备一定的借鉴与参考价值，成为景观设计工作者的案头工具书。

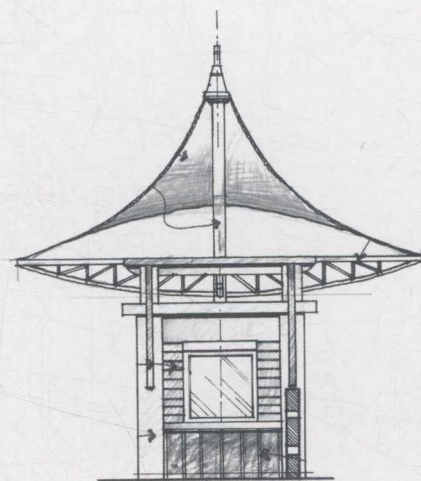
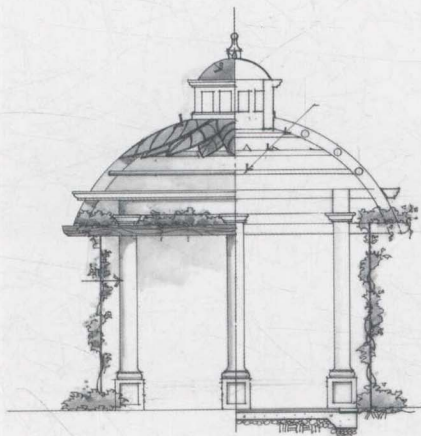
编者  
2010年6月





# 目 录

CONTENTS



1

004~027

Gate  
大门

2

028~053

Bounding Wall & Guardrail  
围墙·栏杆

3

054~069

Flowerpot & Sculpture  
花钵·雕塑

4

070~103

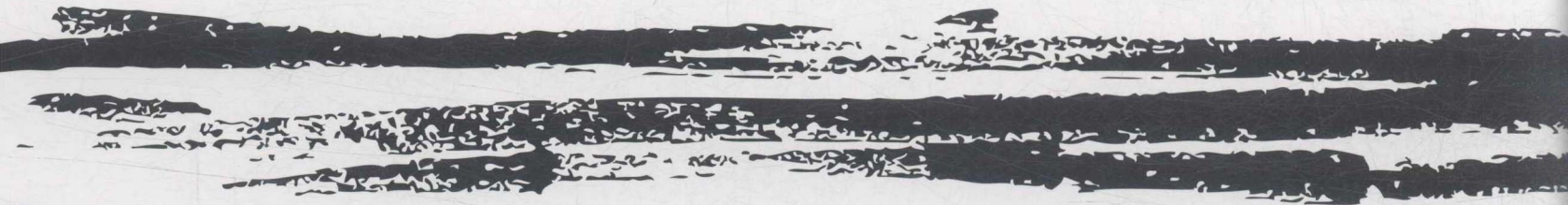
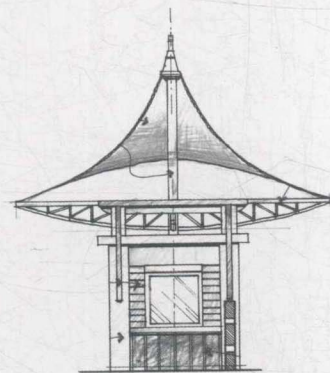
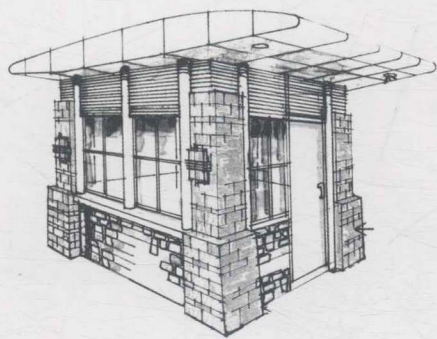
Pavilion & Tower  
亭·塔楼

5

104~278

Partial View  
局部







# Preface

---

With the gradual deepening of China's reform and opening and rapid development of economy, people have increasingly higher demand for the quality of living environment. In recent years, landscape industry has become another new hotspot of domestic design industry driven by the development of property. Moreover, for the influence of this trend, domestic colleges of art, agriculture & forest and architecture have established landscape department or enlarged recruitment scale.

The *Landscape Details Design Manual* mainly introduces the composition of landscape details and all the pictures have been well chosen from the practical engineering cases of many world-class landscape design companies. All the works introduced here are the latest representative works of masters, such as Belt Collins, Edaw, Earthasia, EDSA, Aoya and so on. In the book, the representative works of these famous companies are classified according to various elements including gate, bounding wall, guardrail, waterscape, flowerpot, sculpture, pavilion, corridor, trellis, bridge, seat, paving and partial view, etc. The chosen works of each element can stand for the top level of modern landscape design.

The works collected in this book are all valuable results of hard creators. Their original appearances and features are well preserved in order to respect the hard work of every creator.

Since the works in this book are collected widely, it is impossible for us to note them or acknowledge their designers one by one. We hereby express our thanks to those people who provide these materials and hope this book can be a reference book for landscape designers.

Editor  
Jun, 2010

## 前言

---

随着中国改革开放的逐步深入和经济发展的突飞猛进，人们对生活环境品质的需求日趋提高。近几年，景观行业受到房地产行业发展的带动而跃升为国内设计行业中的新热点。进而促成国内很多美术、农林以及建筑城规院校纷纷增设景观专业，或扩大招生规模。

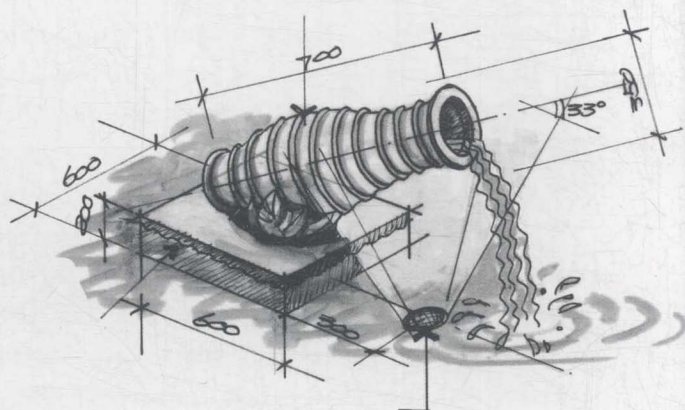
这本《景观细部设计手册》重点介绍景观细部构成，所挑选图片均是从大量的国际顶级景观公司的实施工程案例里精选出来的，是大师级的最新经典代表作品，如贝尔高林、易道、泛亚、EDSA、奥雅等公司的代表之作，书中内容按元素分门别类进行介绍，包括大门、围墙、栏杆、水景、花钵、雕塑、亭、廊、花架、桥、座椅、铺地以及局部景观等，每种类别所选资料都力求能代表当今景观设计的最高水平。

书中收录的内容全部都是创作者心血的结晶，为尊重每位创作者的劳动，我们选用的作品均保持了其真实的面貌与原创特色。

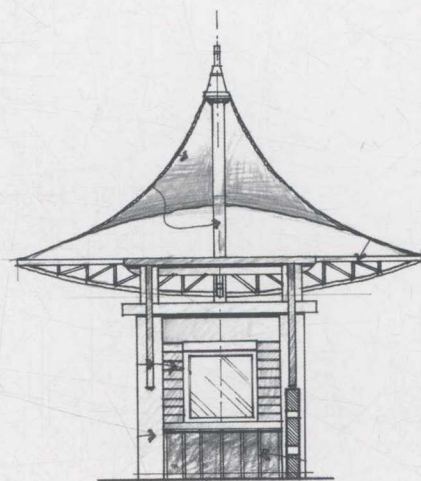
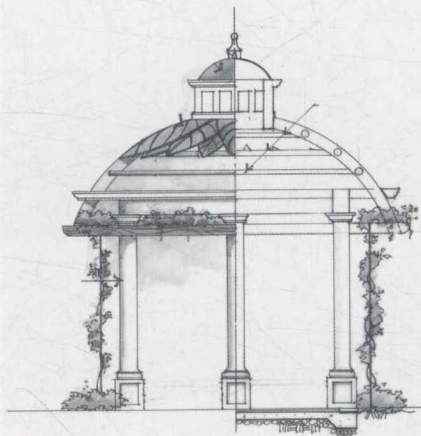
由于本书资料来源广泛，无法一一列及，也无法对设计者一一表示答谢。在此谨向这些资料的提供者表示最诚挚的谢意！希望本书具备一定的借鉴与参考价值，成为景观设计工作者的案头工具书。

编者  
2010年6月









1

004~027

Gate  
大门

2

028~053

Bounding Wall & Guardrail  
围墙·栏杆

3

054~069

Flowerpot & Sculpture  
花钵·雕塑

4

070~103

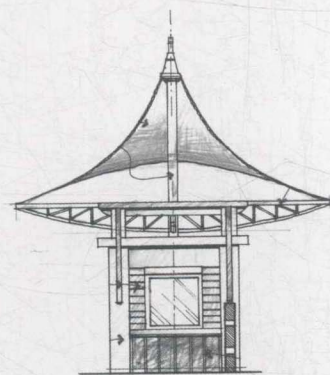
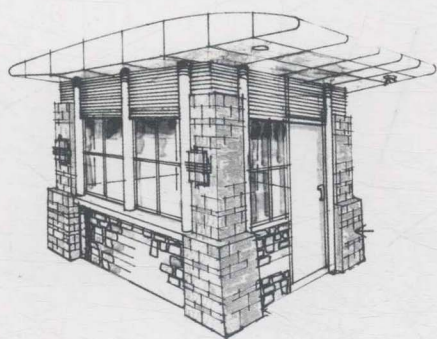
Pavilion & Tower  
亭·塔楼

5

104~278

Partial View  
局部





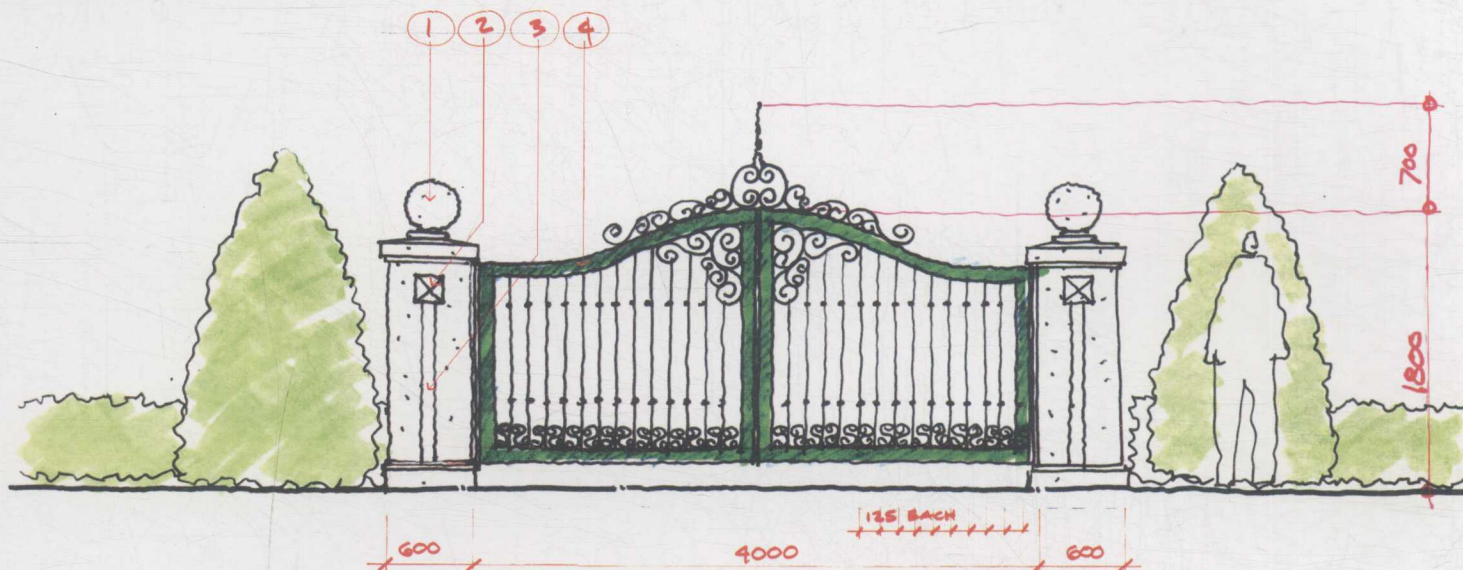


# 大门

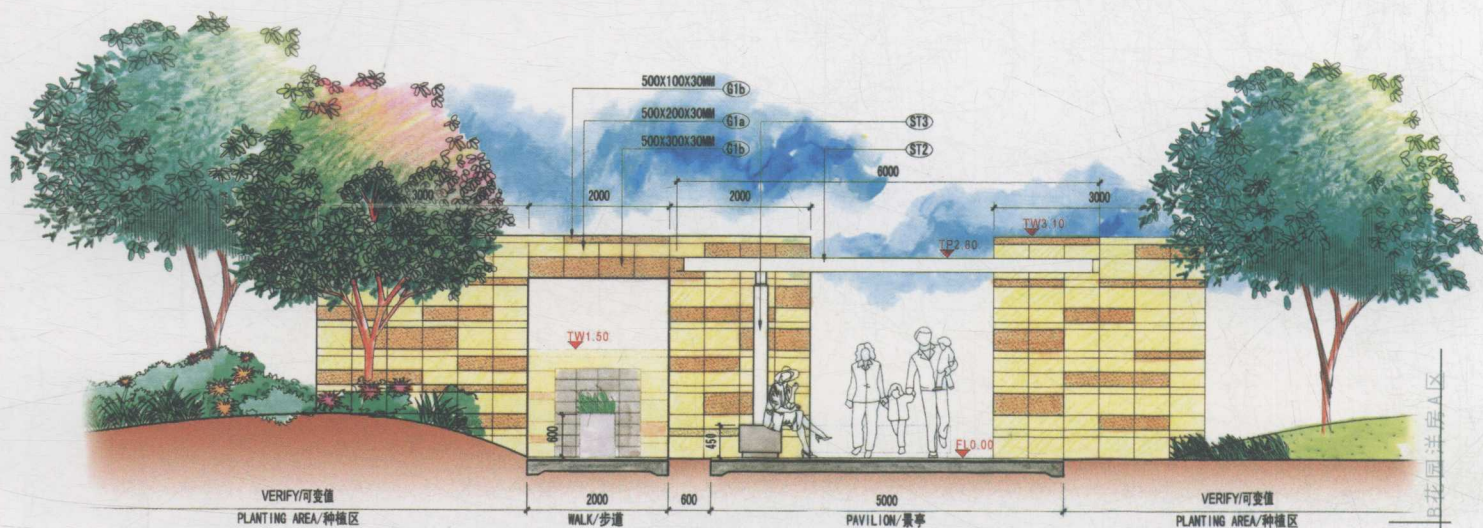
Gate



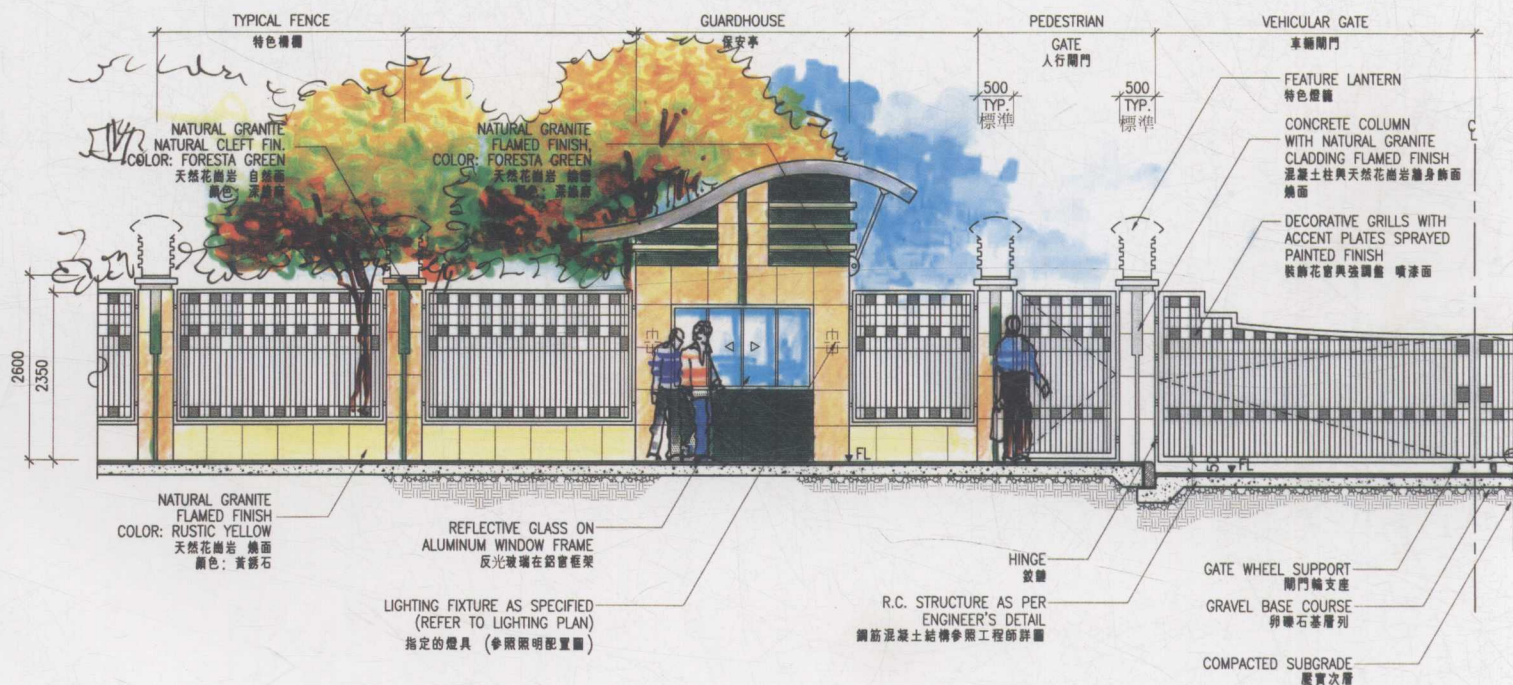




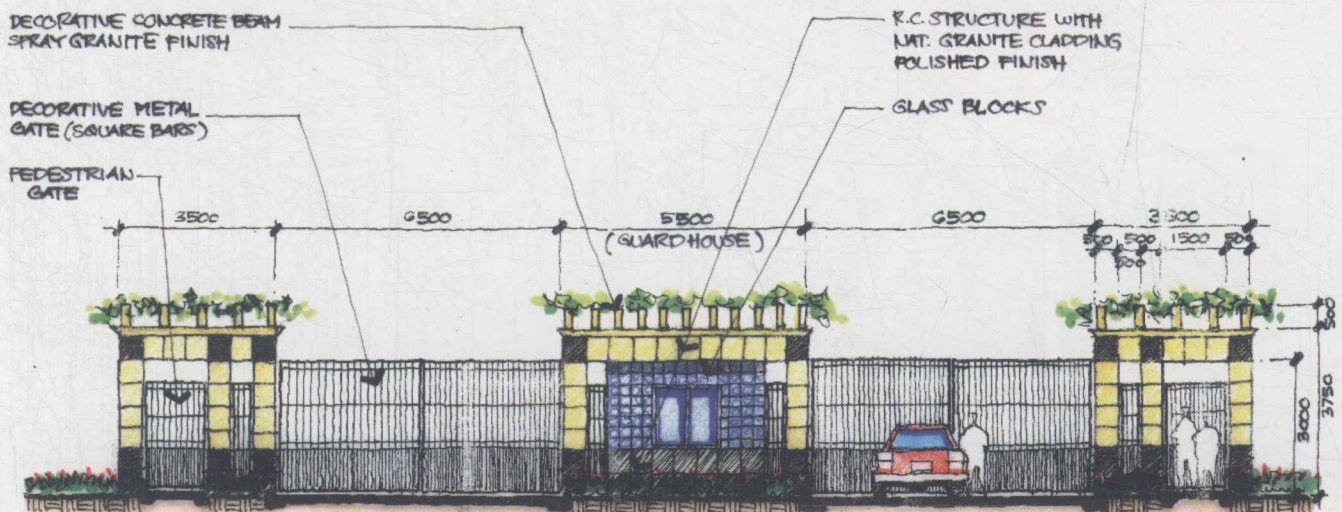
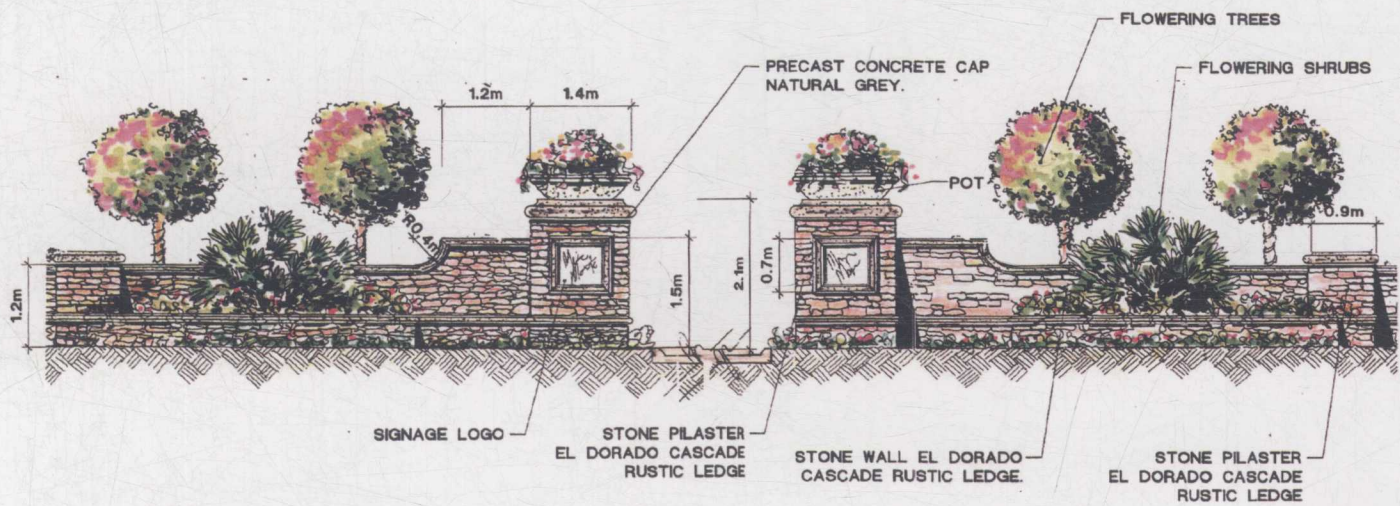
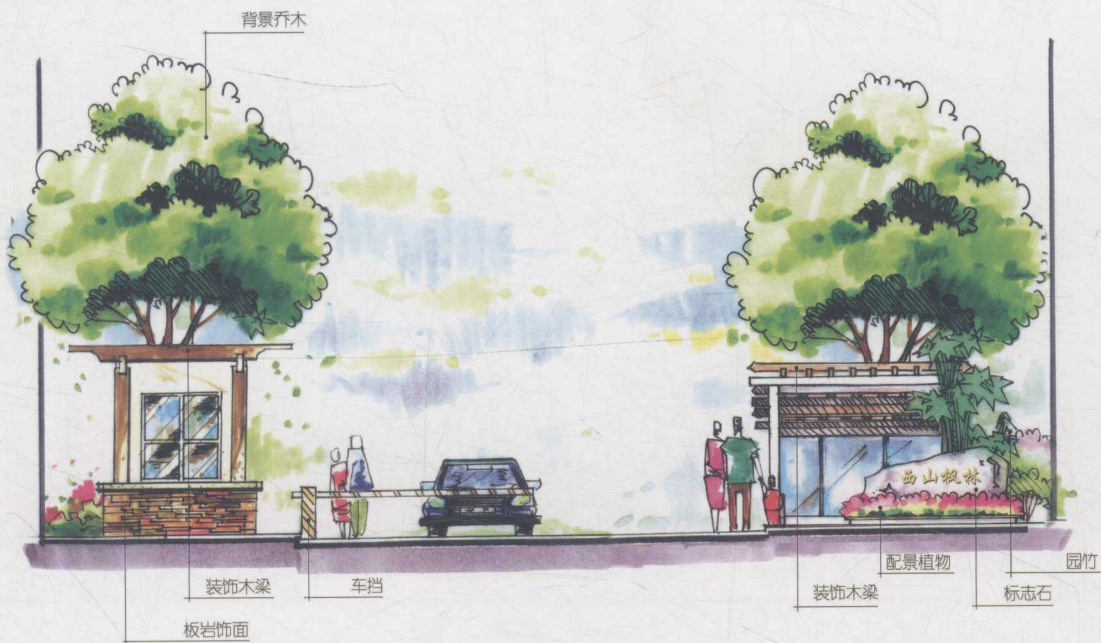
○ TYPICAL ELEVATION: ENTRY GATE 1 & 2 SCALE: 1:200 M.



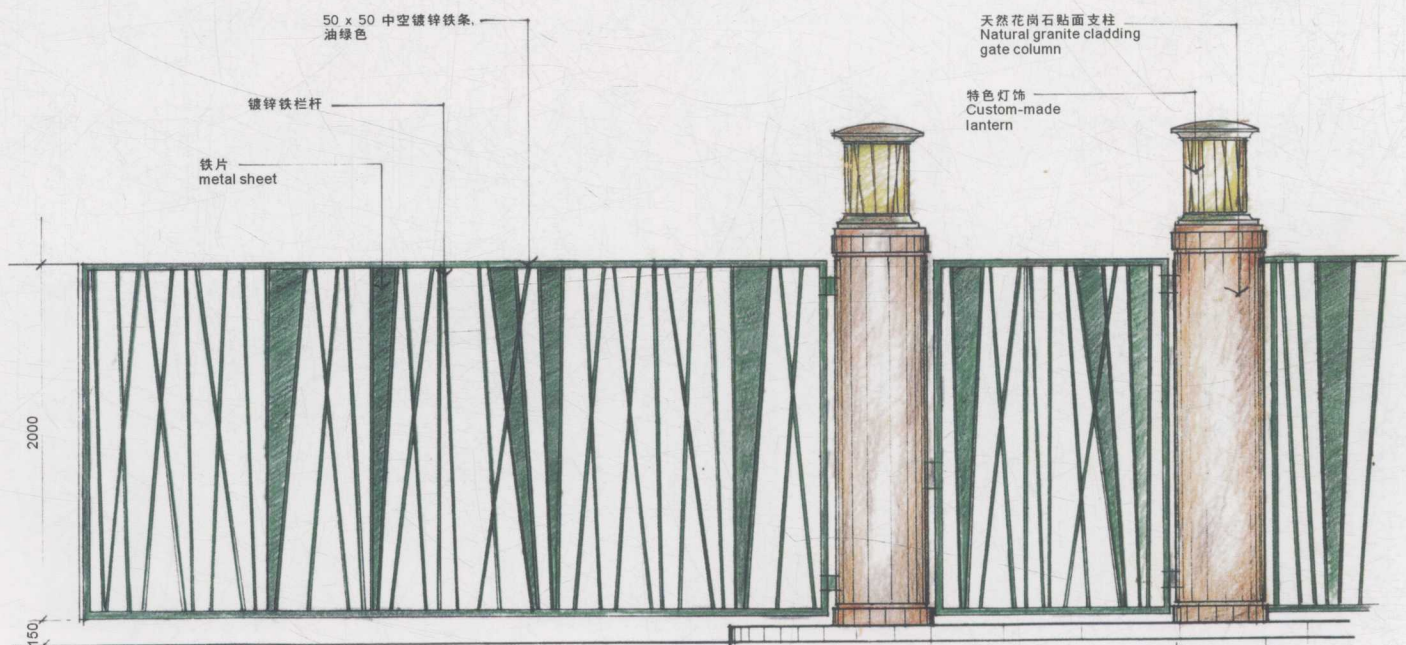
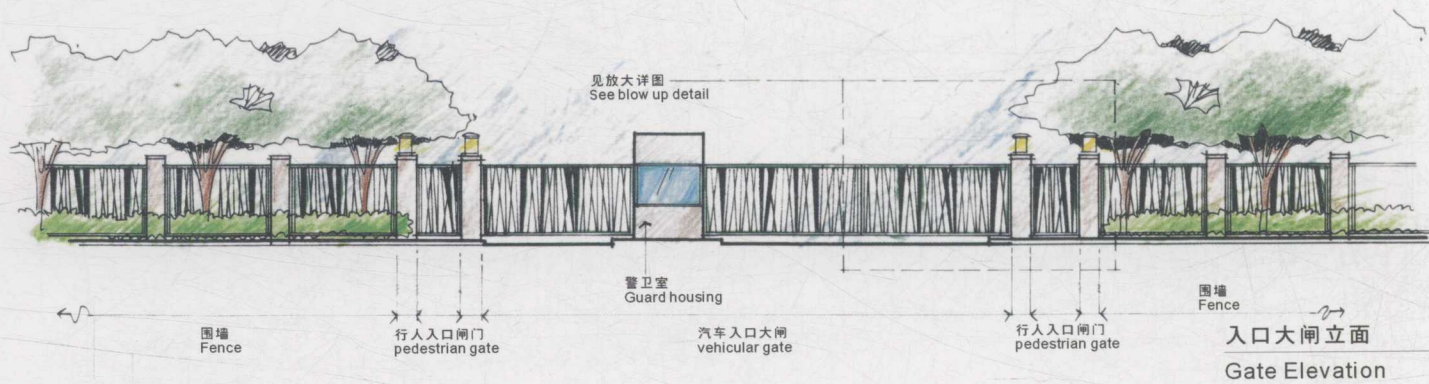
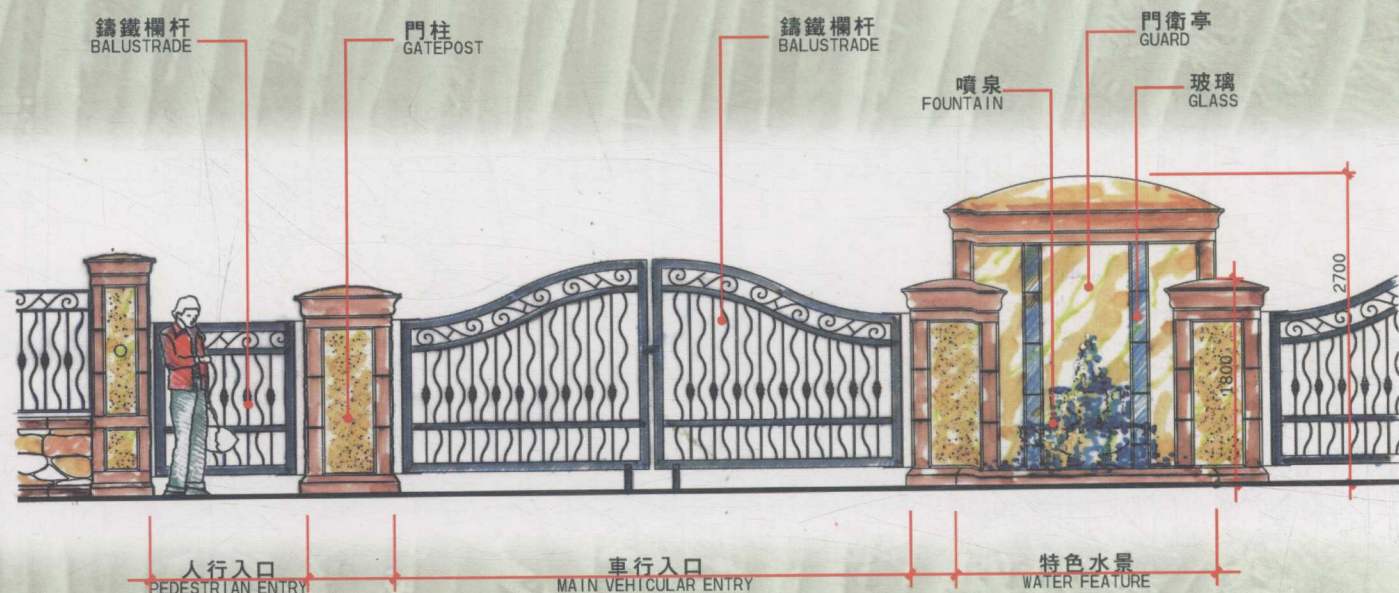
20



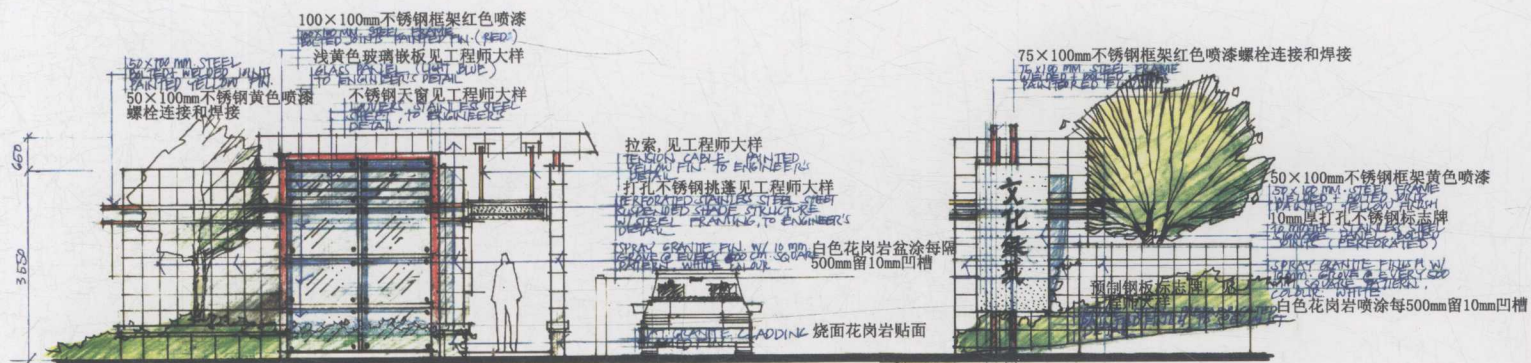








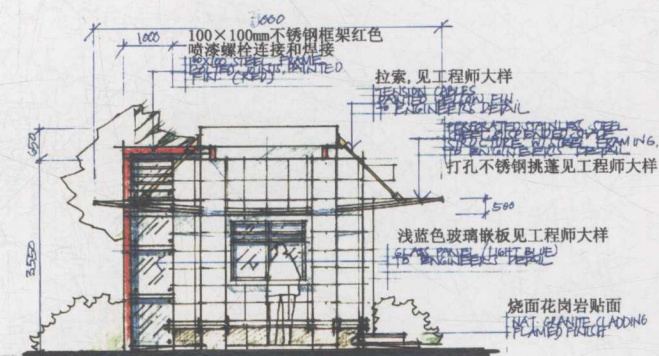




FRONT ELEVATION: ENTRY GUARDHOUSE

SCALE: 1:60 M.

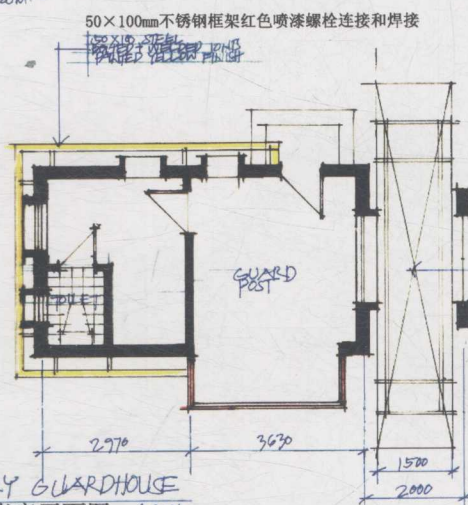
岗亭正立面图



RIGHT SIDE ELEVATION: ENTRY GUARDHOUSE

SCALE: 1:60 M.

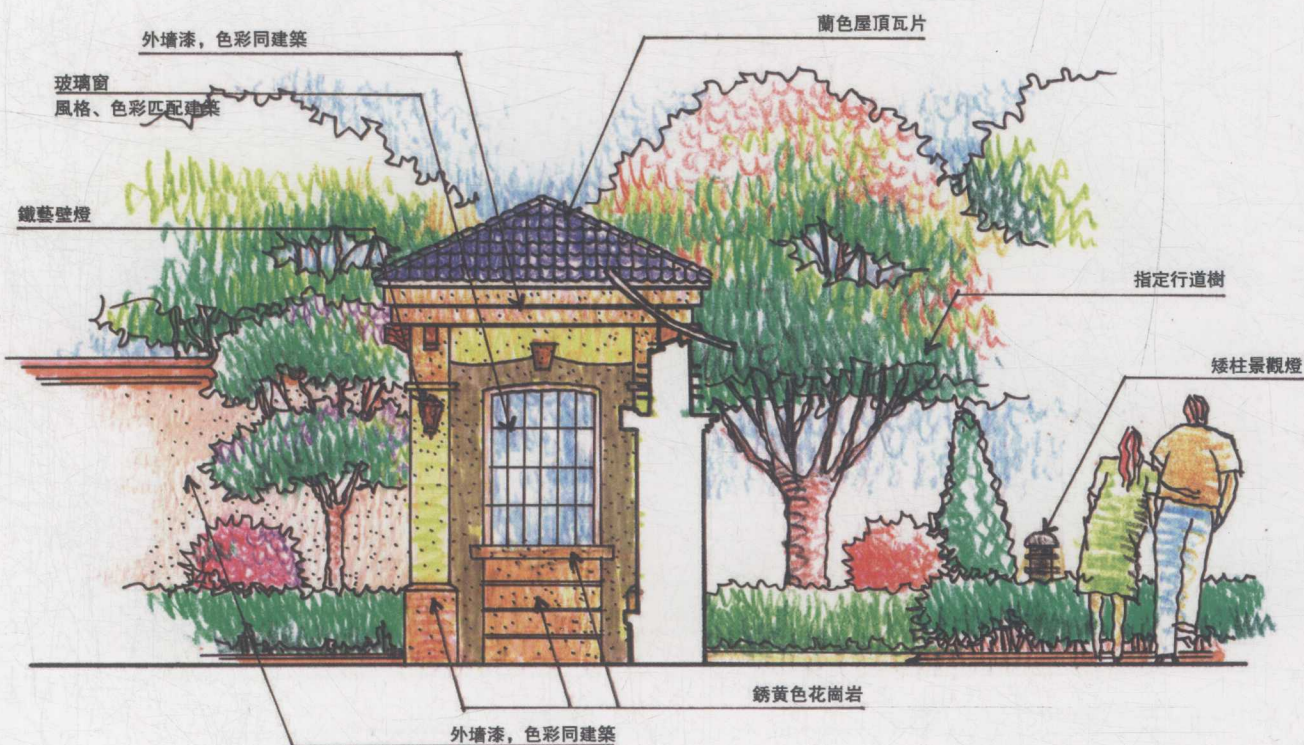
岗亭侧立面图



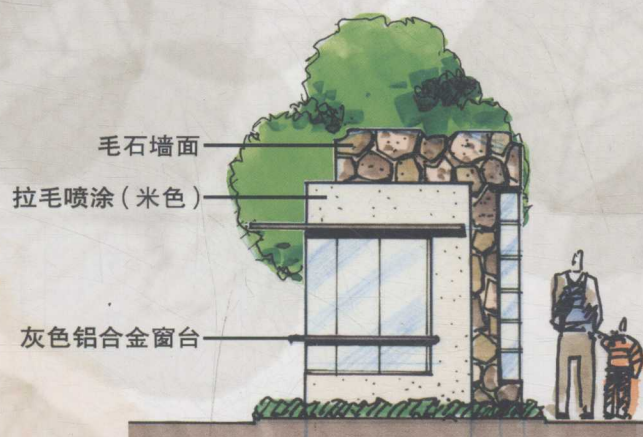
PLAN: ENTRY GUARDHOUSE

SCALE: 1:60 M.

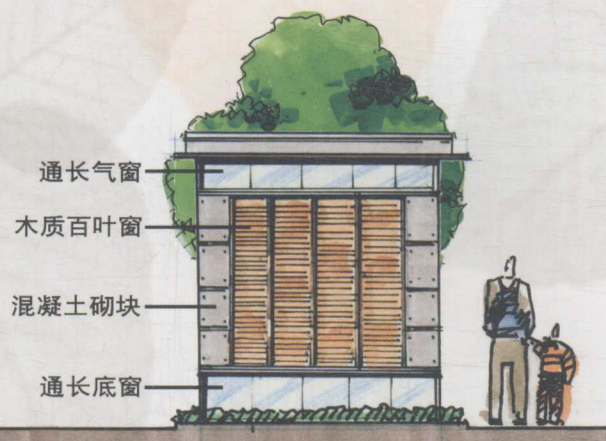
入口岗亭平面图



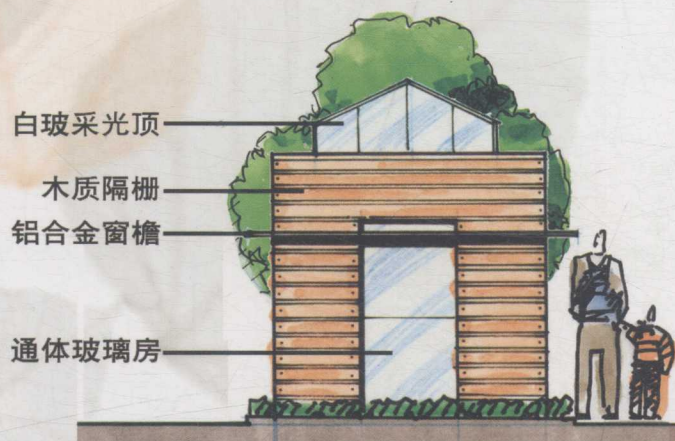




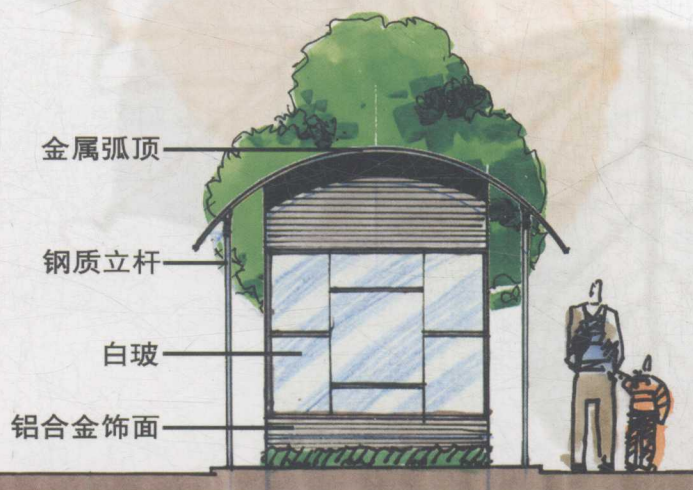
方案 A



方案 B



方案 C



方案 D

