

YEAR 15

新大陆建筑设计有限公司



天津大学出版社
TIANJIN UNIVERSITY PRESS

图书在版编目 (CIP) 数据

15 年: YEAR 15 / 新大陆建筑设计有限公司编. — 天津:
天津大学出版社, 2011.12

ISBN 978-7-5618-4027-6

I. ① 1 … II. ① 新 … III. ① 建筑设计—作品集—中国—现代 IV. ① TU206

中国版本图书馆 CIP 数据核字 (2011) 第 203938 号

责任编辑 油俊伟

出版发行 天津大学出版社

出版人 杨欢

地址 天津市卫津路 92 号天津大学内 (邮编: 300072)

电话 发行部: 022—27403647 邮购部: 022—27402742

网址 publish.tju.edu.cn

印刷 北京华联印刷有限公司

经销 全国各地新华书店

开本 250mm×287mm

印张 18

字数 319 千

版次 2011 年 12 月第 1 版

印次 2011 年 12 月第 1 次

定价 268.00 元

YEAR 15

新大陆建筑设计有限公司

FOREWORD

As one of the sixteen architectural design structural reform pilot units firstly approved by the Ministry of Construction, NW Design Co., Ltd. was formally established in 1996. This company is constituted by many aspiring and passionate young and middle-aged technicians who come from state-owned enterprises as well as overseas returnees from America, Japan and Singapore. Through their hard-working of 15 years, the company has enlarged its scale from 20 persons at the very beginning to more than 200 persons now. It has spread its business to Beijing, Anhui, and Fujian, etc. from Shenyang and its programs are developed all over China from some regions. This book published currently is not only work exhibition of the company in the past 15 years, but also an epitome of the development of private design enterprises during the process of the construction design reform and development in China.

作为建设部第一批批准设立的16家建筑设计体制改革试点单位之一，新大陆建筑设计有限公司于1996年初正式挂牌成立。它是由一批怀着理想与激情，从国营大院走出来的中青年技术骨干及来自美国、日本、新加坡的海归设计人员共同组成的一个新型设计团队。经过15年的辛勤努力，新大陆建筑设计公司已经成为从初期的20多人发展到了200多人的大型设计企业。公司从沈阳发展到北京、安徽、福建等地，项目从区域发展到全国。今天出版的这本专辑，不仅是新大陆建筑设计公司15年的作品展示，同时也是中国建筑设计改革发展过程中民营设计企业的一个成长缩影。



新大陆建筑设计有限公司总经理 郭旭辉

CONTENTS

PUBLIC BUILDINGS / 公共建筑

- 010 TWENTY-FIRST CENTURY TOWER / 二十一世纪大厦
- 014 LIAONING HIGHER PEOPLE'S COURT / 辽宁省高级人民法院
- 018 SHENYANG POLICE DEPARTMENT HEADQUARTERS / 沈阳市公安局
- 022 HEFEI LANDING INTERNATIONAL HOTEL / 合肥蓝鼎国际酒店
- 026 GLORIOUS BRILLIANCE CLUB INTERNATIONAL / 金碧·海洋之星度假酒店
- 030 GUOFENG INTERNATIONAL HOTEL / 唐山国丰维景国际花园酒店
- 034 ROYAL OCEANIC SPRINGS INTERNATIONAL HOTEL / 合肥皇家海域温泉国际酒店
- 038 NO.8 BUILDING OF LIAONING FRIENDSHIP HOTEL / 辽宁友谊宾馆8号楼
- 042 KONGGANG TOWER / 新恒基空港大厦
- 046 NEW HONG KONG - MACAO INTERNATIONAL TOWER / 沈阳新港澳国际大厦
- 048 PENGLI PLAZA DISTRICT C&D PROJECT / 沈阳鹏利广场C、D区
- 052 TANGSHAN MAY SUNSHINE PLAZA / 唐山五月阳光广场
- 056 MUSEUM OF CHINESE INDUSTRY / 中国工业博物馆
- 060 SHENFU NEW CITY CULTURAL CENTER / 沈抚新城文化中心
- 064 TIEXI PLANNING EXHIBITION / 沈阳铁西规划展示馆
- 068 NEW TIEXI REGIONAL SPORTS CENTER / 沈阳铁西新区体育中心
- 074 CHAOYANG AQUATIC CENTER / 朝阳市游泳馆
- 078 HULUDAO CENTRAL HOSPITAL / 葫芦岛市中心医院
- 080 BANK OF CHINA BAYAN NAOER BRANCH / 中国银行巴彦淖尔市分行
- 082 NORTH CAMPUS OF SHENYANG NO.2 HIGH SCHOOL / 沈阳二中北校区
- 088 NORTHEAST YUCAI BILINGUAL EXPERIMENTAL SCHOOL / 东北育才双语实验学校
- 094 RECONSTRUCTION OF NORTH CAMPUS OF NORTHEAST YUCAI SCHOOL / 东北育才北校区改建
- 098 NORTHEAST YUCAI BEIHONG ART SCHOOL / 东北育才悲鸿美术学校
- 102 SCIENCE AND ENGINEERING COLLEGE OF SHENYANG UNIVERSITY / 沈阳大学科技工程学院
- 108 SHENFU NEW CITY CBD PLANNING / 沈抚新城中央商务区规划
- 112 FUSHUN ECONOMIC DEVELOPMENT TAL DISTRICT R&D CENTER / 抚顺经济开发区研发中心
- 116 CHENGDE PUNING TEMPLE AREA PLANNING / 承德普宁商业街区规划
- 120 SHENYANG CAOZHONG REGION OVERALL PLANNING / 沈阳曹仲地区总体规划
- 124 ANHUI BENGBU UNIVERSITY TOWN PLANNING / 安徽蚌埠大学城规划
- 126 BEIJING RUNZE VILLA / 北京润泽庄园



PUBLIC BUILDINGS

TWENTY-FIRST CENTURY TOWER

二十一世纪大厦

设计时间: 1999—2000

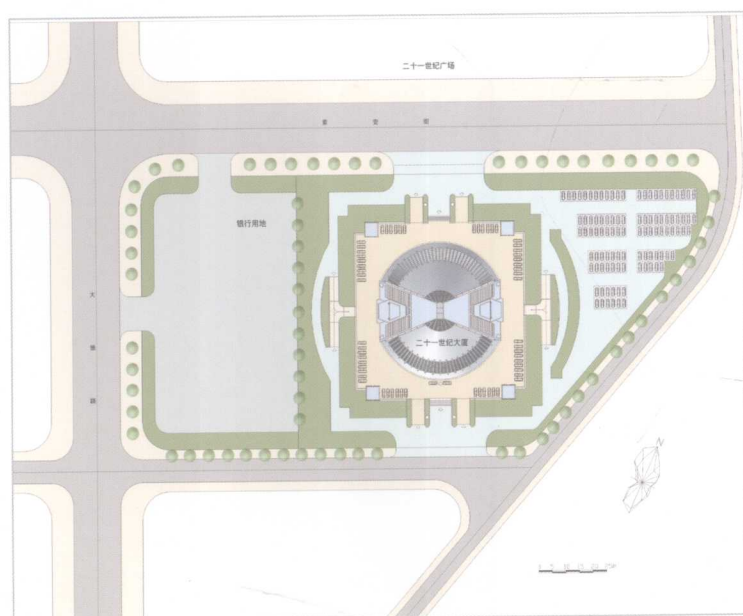
项目地点: 辽宁省沈阳市

建筑面积: 41 000 m²

Design/Completion: 1999/2000

Location: Shenyang, Liaoning, China PR

Total Construction Area: 41,000 m²

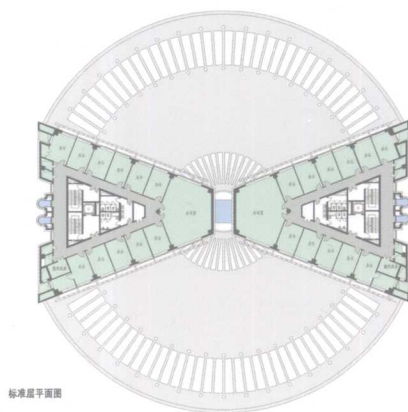
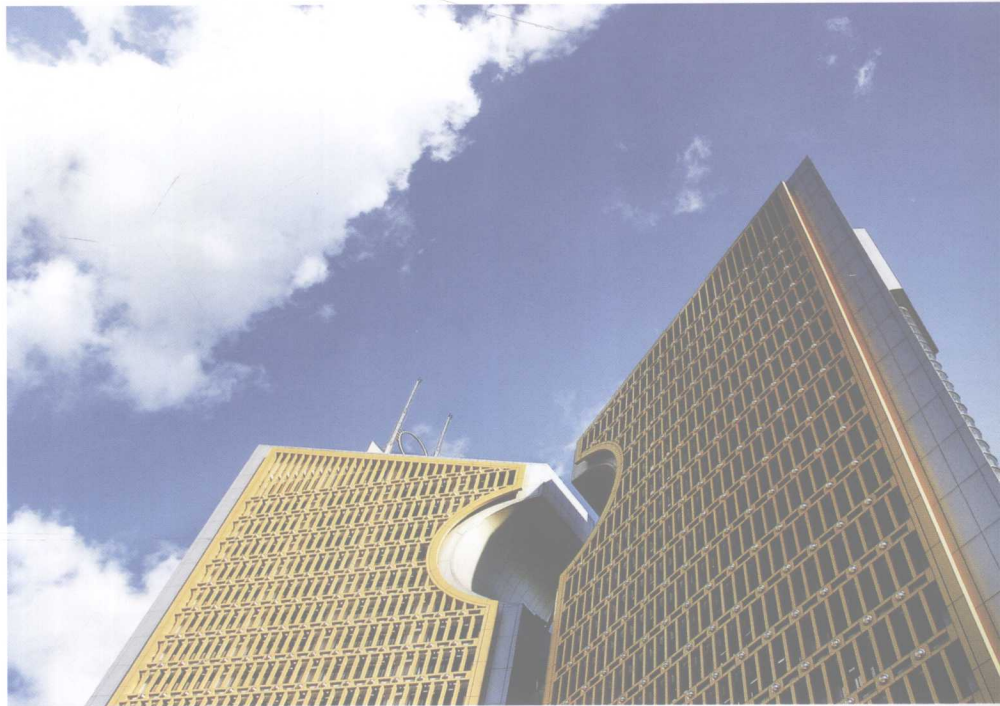
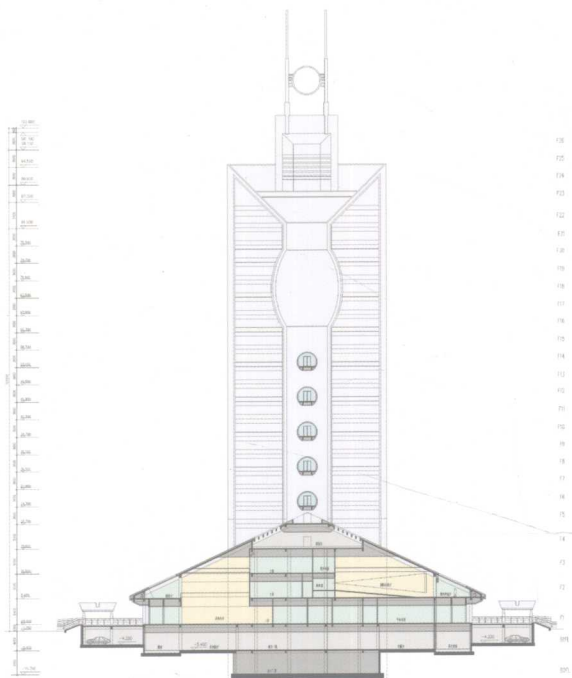


沈阳技术产业开发区二十一世纪大厦是一座集会议、商务、办公、住宿为一体的综合性建筑。大厦与前区广场形式立意构思来源于中国古代“日晷”，它是古时用于太阳计时的圆盘。前区广场作为日晷的“表盘”，两幢塔楼之间形成“光缝”，投影为“表针”，日暮的阳光透过两幢塔楼的缝隙，投射于世纪广场之上，象征新世纪的到来。

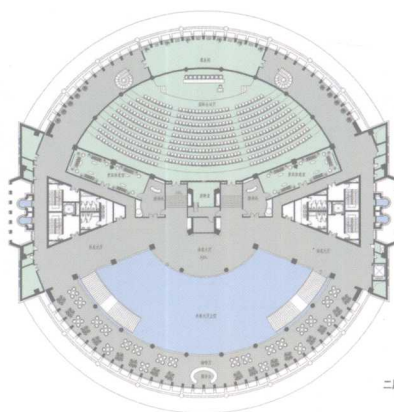
Located in Shenyang's technological development district, the Twenty-first Century tower is a combination of meeting, business, office and lodging spaces. Design concept draws inspiration from the ancient Chinese sundial, where sunlight strikes a pointed extension on a stone base to reflect different times of the day through the shadow. On the Twenty-first Century Tower, the twin towers' narrow opening is the dial, while the shadow of time casted on the Millennium Square below signifies the coming of the new century.



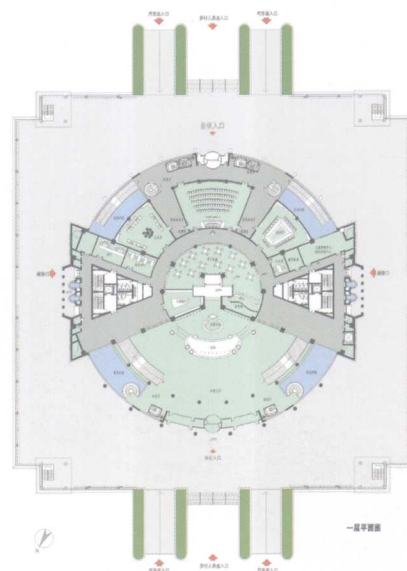




标准层平面图



二层平面布置图



一层平面图

LIAONING HIGHER PEOPLE'S COURT

辽宁省高级人民法院

设计时间: 2000-2001

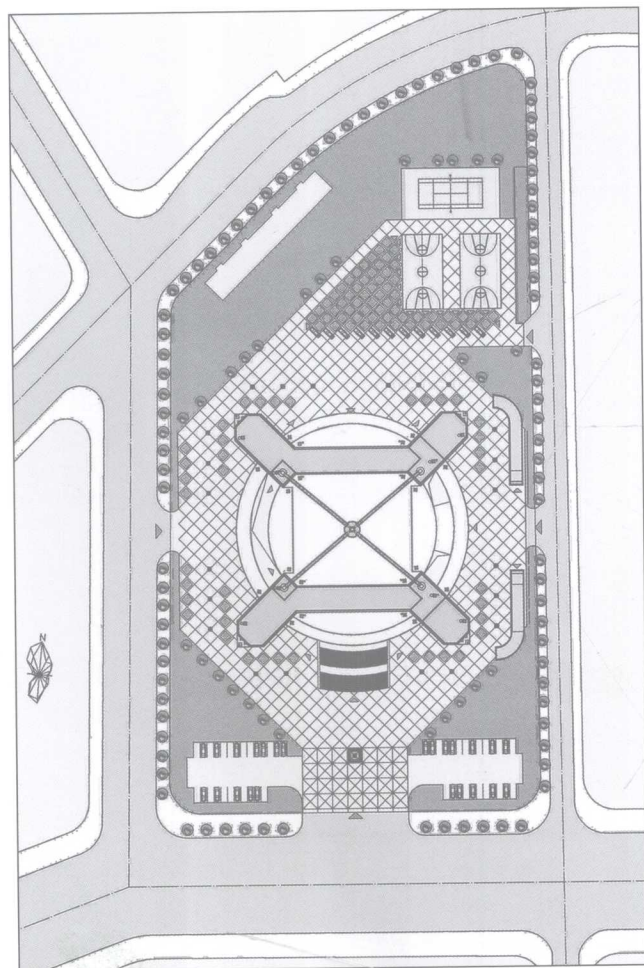
项目地点: 辽宁省沈阳市

建筑面积: 47 210 m²

Design/Completion: 2000/2001

Location: Shenyang, Liaoning, China PR

Total Construction Area: 47,210 m²



对于中西方文化的了解和扬弃, 是分析设计思想、寻求文化支点的前提。在建筑设计中, 力图用建筑实体与空间之间不同的语言符号, 传递法律的精神实质和丰富内涵。

方案设计采用方、圆及45°斜向板式布局, 方圆及格构式板条形互相契合, 既有“无规矩不成方圆”之意, 又通过多角度多向布局体现多层次多方位的贯通与融合; 同时多层部分以圆形为主, 以主要公众活动空间——法庭为核心组织平面功能, 通过与多层的中庭相连, 高层部分一分为二, 从而保证所有办公用房为南向房间。整体基地上建筑平面形态考虑东南西北四个方位的城市景观效果, 没有主次面之分, 整个建筑均衡完整而富于变化, 气势恢弘, 正大严明。两栋办公楼的平面形态犹如两山对峙, 体现执法如山的神圣职责和深刻内涵。

主体形象的完整并不影响多重意义的象征与表达, 其更多的深层意义还在于塑造对内外空间的感觉和以后的室内空间设计上, 并试图通过建筑设计理念的更新与设计手法的变化, 从建筑的本体功能出发, 塑造出一座迥于其他司法建筑, 气度不凡, 庄严大气而又具有撼人心魄力量的法院形象。

A project that seeks to bring significant improvement in the working conditions of Shenyang's law workers, the High People's Court is a provincial-level court with complete features, excellent accessibility and ingenious balance of realistic and symbolic design elements.

The Court's design combines simple geometry to form interlocking shapes that both have practical purposes and conveys symbolic meanings. Two identical structures rise over the circular main section and are largely diagonal from the main base. The distance between north and south buildings is over 43 meters, enabling sufficient natural lighting into the structure. Above the structure is the symbolically significant tower, from which the sharp point pointing to the far heavens signifies the Court's determination to uphold justice.

The fifteen-floor structure largely follows conventional planning requirements. Floor levels are formed using netted columns and partial arched netted columns. Numerous small, medium and large courtrooms cover the first five floors, while office spaces are located from sixth floor and up. Extra features include employee recreation rooms and indoor swimming pools.

