

# HOUSES IN 理想居 SUNSHINE

EXOTIC STYLE 异之曲

倾心一见便可成就你所有的居家美梦  
ONE GLIMPSE FRUITS ALL YOUR DREAMS  
FOR A SWEETY HOME

深圳市博远空间文化发展有限公司 编



# HOUSES IN 理想居 SUNSHINE

EXOTIC STYLE 异之曲

倾心一见便可成就你所有的居家美梦  
ONE GLIMPSE FRUITS ALL YOUR DREAMS  
FOR A SWEETY HOME

深圳市博远空间文化发展有限公司 编





凭密码辨真伪，免费下载本书完整电子版  
Distinguish authenticity by password  
Download free complete E-book

凤凰出版传媒集团 | 凤凰空间  
江苏人民出版社 | IFENGSPACE

地址：天津市南开区白堤路 240 号科技园科贸大厦  
传真：86-22-60266199  
电话：86-22-60262226 / 60262227 / 60262228 (总机)  
86-22-60266193 (直线)

E-mail: 87896633@163.com  
http: //www.ifengspace.cn

上架建议 室内设计

ISBN 978-7-214-06740-1



9 787214 067401 >

定价：258.00元(USD 45.00)



484035

# HOUSES IN 理想居 SUNSHINE

EXOTIC STYLE 异之曲

深圳市博远空间文化发展有限公司 编

# Preface

---

The show flat is a product of the rapid development of real estate and it is also a representation of residence culture. As a crystal of long-term exploring in interior design, show flat function as a fashion leader of living space. In recent years, the minimuseum, euro-style, Chinese style, Southeast Asia style on interior design are primarily practiced in the design of show flat. As a means of real estate sales, show flat mainly function on bringing out potential buyers. Thus, a show flat always results from space reconstruction and beautification—highlight the merits and weaken the disadvantages.

Show flat design all over the world always have their own high points, such as an international vision, skillful artistry on small space design, concept of coming back to nature and desire of warm and comfortable ambience... Since being exposed in the leading-edge information and applying new materials and technology in the first time, the works of foreign designers are always innovative. They are also more likely to design based on human nature. They put householders requirements and interests first, and strive to improve the living environment with a professional space planning and layout.

To create a high quality living space, good taste spiritual space and high efficient space is the right goal of interior design. Designers pay more attention to the individual and fashion elements and audacious planning. To take away the constriction of commercial apartment, designers break out the original layout and create an open vision to stretch the depth of space. For the application of materials and decorations, they always dedicate to demonstrate a simple and bright style. They highlight the harmonious relation between room and environment. The plants and water is the favourable factors and also gives designers many inspiration.

This issue collect the latest classical materials of show flat projects all over the world. Informative, high reference value and authoritative compilation make the book professional and valuable. Every projects are contains live-action drawing, plan view and detailed description.

This book focus on improving the cultural taste and present the modern design ideas and trend on show flat. We dedicate to allow people to enjoy the beauty of interior design art. Fresh and elegant, fashionable and splendid, noble and luxury, all of the various styles will provide you a visual feast.



# 序言

**样**板房是楼市发展的一个产物，也是住宅文化的一种表现。它担负着引领大众居住潮流的功能，是设计师们长期执著地探索和实践的结晶。近年来，简约、欧式、中国风、东南亚风格等室内装饰风潮，其初始实践，无不源自样板房设计。样板房更是销售的一个手段，始终以刺激销售为依归。样板房设计是户型结构的美化和再创造——强化自己的优点，掩饰其中的缺点，以便完美地展现在客户面前，让人们品味到居住文化的内涵。从而激起购房客户的购买欲望，使开发商在项目销售上占据先机，赢得好的经济和社会效益。

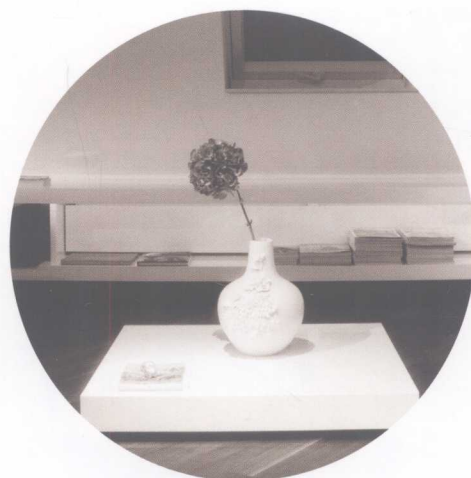
国外的样板房设计有自己显著的“烙印”，比如国际化的视野，比如将小空间玩得得心应手，比如讲求心灵的自然回归，力求表现悠闲、舒畅、温馨气息。而国外设计师接触潮流前沿资讯多，并善于第一时间把新材料、新工艺运用到项目设计中去，所以设计更有新意。他们也更执着于以人为本的设计本源，一直把空间的主体——人放在首位去设计。细心观察和聆听业主的喜好和需要，然后再从专业的角度去合理规划和利用，从专业的角度来改善业主的居住环境，力争达到业主满意的程度。

室内设计的目的是创造高品质的生活空间、高品位的精神空间和高效能的功能空间。国外样板房设计师们注重于个性的彰显和当代时尚元素的添加，钟爱于根据房型特征进行大胆的规划。打通原有的布局，在视觉感官上喜欢以开阔的视野和长条通畅的造型加强空间的纵深感，消除现代商品住房的层高压抑感。在用材和装饰上着力体现简洁、明快的风格，彰显大气而精致的生活品位；注重环保理念，植被和水流及山脉似乎成了设计师们情有独钟的灵感源泉。

全书收录了近年来大部分国外样板房经典案例的一手资料，内容翔实丰富，参考价值极高。名家设计，权威编纂，让本书专业价值高度得到大大提升。精美的图片，充分传达出有限空间、无限创意的设计理念。每个项目都配有实景图、平面图以及精准到位的文字说明。本书所选的案例，正是国外当红设计师展示性与实用性完美结合的样板房设计作品，个案经典，作品优秀，并具有前沿性。

本书着力于文化修养和鉴赏品位的提升，倾心于向人们展示现代样板房的设计潮流及理念。让人们更详尽地欣赏到因现代理念指导而升华为一门艺术的室内设计，领略到现代理念衍生出的艺术之美。细览本书，或是素雅清新，或是风光迤逦，或是时尚个性，亦或是高贵奢华，都将带给您简洁规整、精致温馨的视觉享受。

# Contents 目录



HORIZONTAL SPACE

LUXURY VILLA IN NAFPLION

CHALON RESIDENCE

KONA RESIDENCE

SENTOSA HOUSE

BACKYARD HOUSE

RESIDENCE "C"

ROMANZA RESIDENCE

PLUS

COTTESLOE HOUSE

DEPARTAMENTO

TABACHINES

ALTUS PENTHOUSE

35 WHITE STREET

PRIVATE SINGLE - FAMILY HOUSE

MC HOUSE

VICTORIA TOWER MODEL UNIT

B-HOUSE

AYAZPASA HOUSE

OJENI APARTMENT

LOFT BA

CASA MORO

GALVANI

CASA G

CASA C

870 UN PLAZA

FANTASY ISLAND

KILLARA PROPERTY

MC1 RESIDENCE

MOUNTAIN HOUSE

HOUSE LIKE A MUSEUM

水平空间	008
纳普良豪华别墅	016
CHALON 住宅	026
科纳住宅	034
圣淘沙宅邸	048
西雅图后院之家	056
C 住宅	064
浪漫住宅	080
PLUS 住宅	086
COTTESLOE 住宅	092
部屋	100
TABACHINES 公寓	108
阿塔斯厢房	118
35 白街阁楼	126
私人独立住宅	132
MC 住宅	140
维多利亚大厦	148
B 宅邸	158
土耳其 AYAZPASA 大宅	166
OJENI 公寓	172
BA 阁楼	180
卡萨摩洛之家	192
柏林 GALVANI 顶楼公寓	206
意大利 CASA G 独栋住房	214
CASA C 独墅	224
870 UN 广场	234
梦幻岛	244
可莱雅住宅	254
MC1 住宅	262
靠山别墅	270
像博物馆的房子	278





# ◆ *HORIZONTAL SPACE*

水平空间

Location: Cuneo, Italy

Area: 400 m<sup>2</sup>

Project Team: Damilano Studio Architects

Collaborators: Arch. Claudia Allinio, Geom. Ornella Nicolino

Photography: Andrea Martiradonna

地点：意大利，库内奥

面积：400 平方米

项目团队：Damilano 建筑工作室

合作者：建筑师 Claudia Allinio，几何学家 Ornella Nicolino

摄影：Andrea Martiradonna









**H**ORIZONTAL SPACE is a composition of pure volume of constant height, they are moved horizontally and emptied or filled according to the function.

A pomegranate highlights the access side. Wide steps leading to the entrance introduce a longitudinal consecutive spaces. Born to be divided into two units, the house is characterized by a large central hall, on the main breaks in the structure projected towards the outside with a wooden roof.

The living room, passing from one part of the house, opens with large windows to the garden and into the country. The teak floor's warm environment and a stone wall covered with white sheets are to create a staggered back almost sculptural material.

The kitchen is characterized by a horizontal cut above the work plan, which frames the motagna and the nearby town of farms.

In master bedroom there is a bathroom with a large shower and a satin flat floor. A translucent sliding island ideally the bathroom. The villa also has two bedrooms with their bathroom, a laundry and a bathroom for the living area.

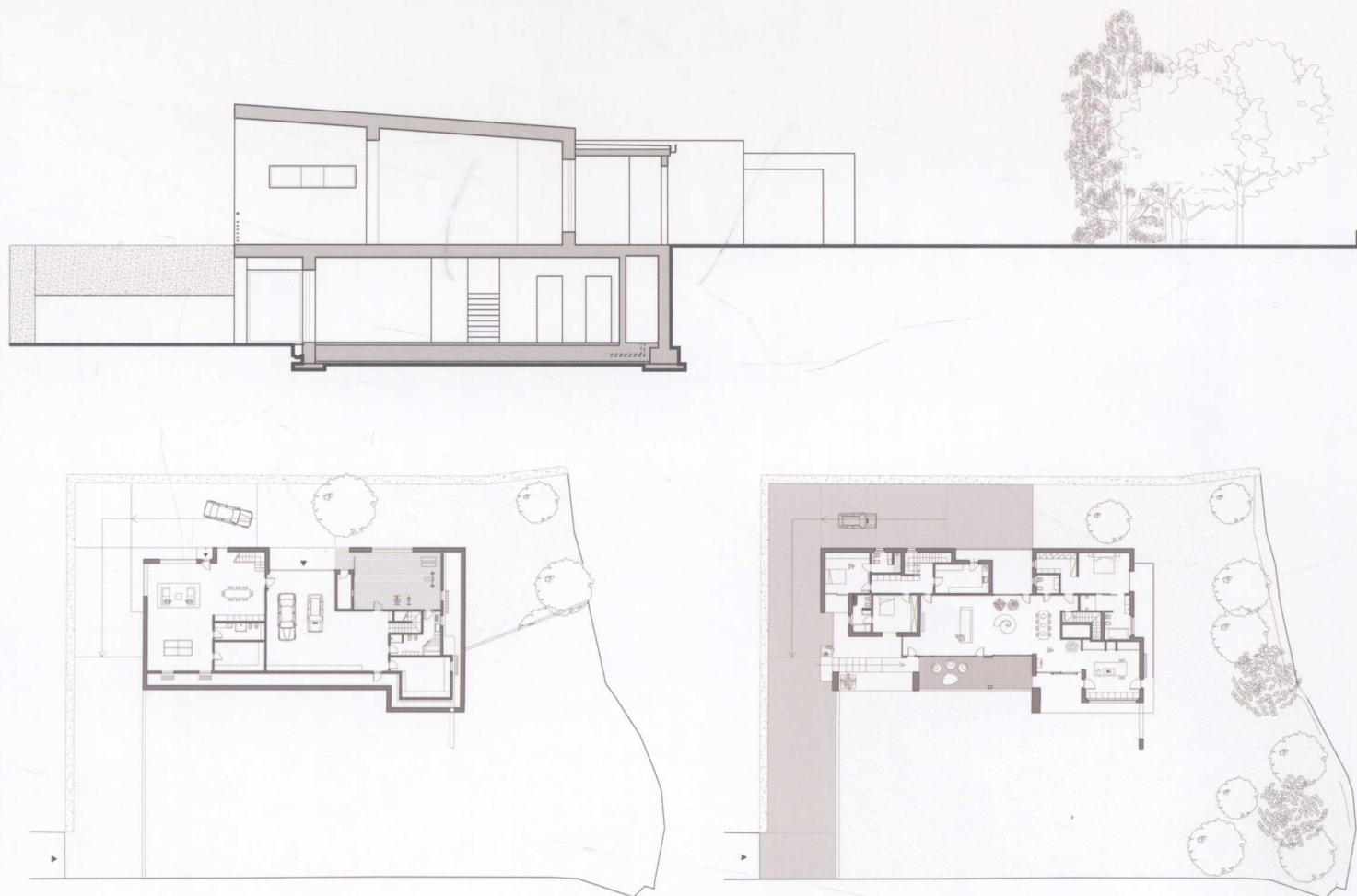
The front of the rear, much more austere, has a balcony of the service and the opening of the premises in the basement used as a gym, garage and local technicians.

**水**平空间是在高度不变的情况下对空间的排列。空间在水平方向上推进，根据设计功能或预留或填补空间。

一株石榴树点缀了入口。宽宽的台阶将视线引到了入口处的纵向连续空间。这座房子被分成两个功能区，其中最大的特色是一个宽敞的中央厅，它在整个结构上起到隔断的作用，一个木屋顶使其可以向外延伸。起居室占据了房子很大的空间。它有很大的窗户，朝向花园，可以欣赏到乡间美景。温暖的柚木地板和利用白色布艺装饰的石墙，营造出一种错落有致、近乎雕刻材料的感觉。

厨房以灶台上的横向缺口为特色，勾勒出山川农田的图画。主卧室内有一个很大的浴室，铺有光滑平板地板。一个透明的推拉隔门让浴室变得更加完美。该别墅还有两个带浴室的卧室。客厅里也有一个洗衣房和浴室。

打开后门，有一个阳台用于物业服务，从阳台可进入地下室，地下室被用作健身室、车库以及家庭修理室。



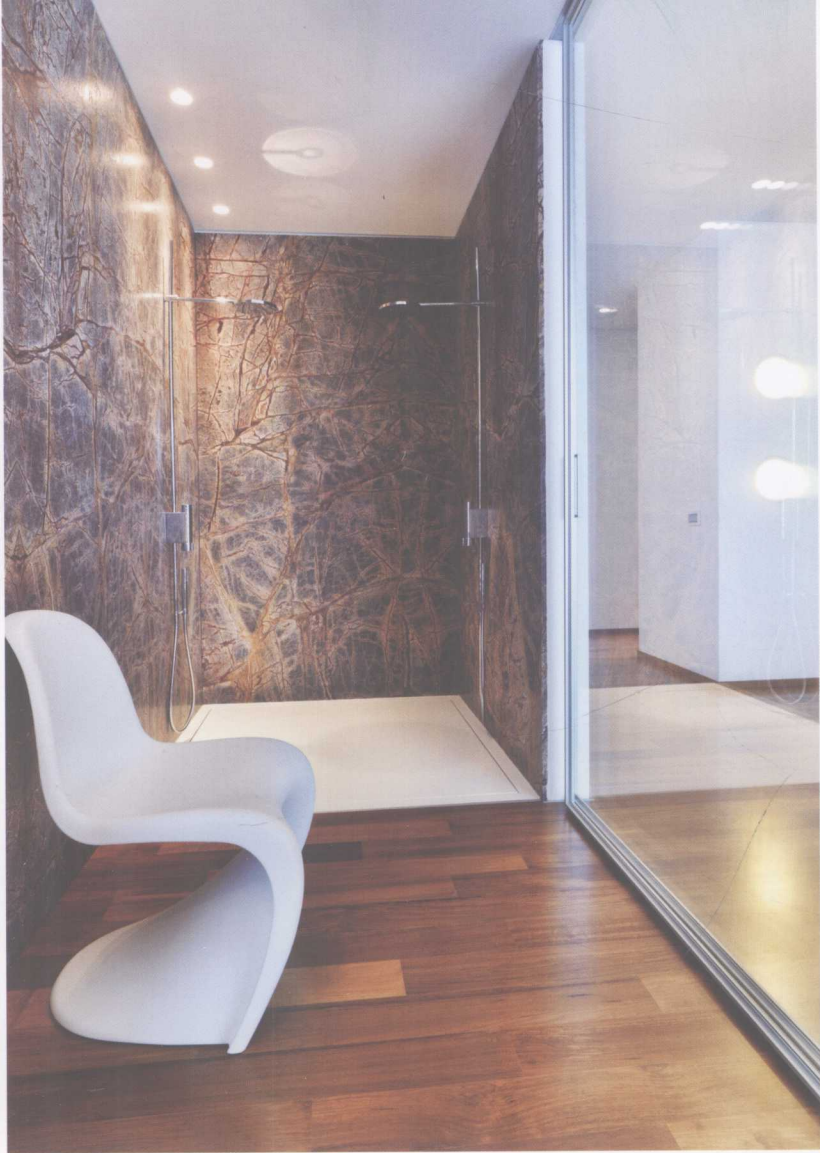
























# *LUXURY VILLA IN NAFPLION*

## 纳普良豪华别墅

Location: Nafplion, Greece

Area: 660 m<sup>2</sup>

Designer: Ismini Karali

Photography: Ilias Polichronopoulou

地 点: 希腊, 纳普良

面 积: 660 平方米

设计师: Ismini Karali

摄 影: Ilias Polichronopoulou