

国际新建筑

December 2012

12

AIA

International New Architecture

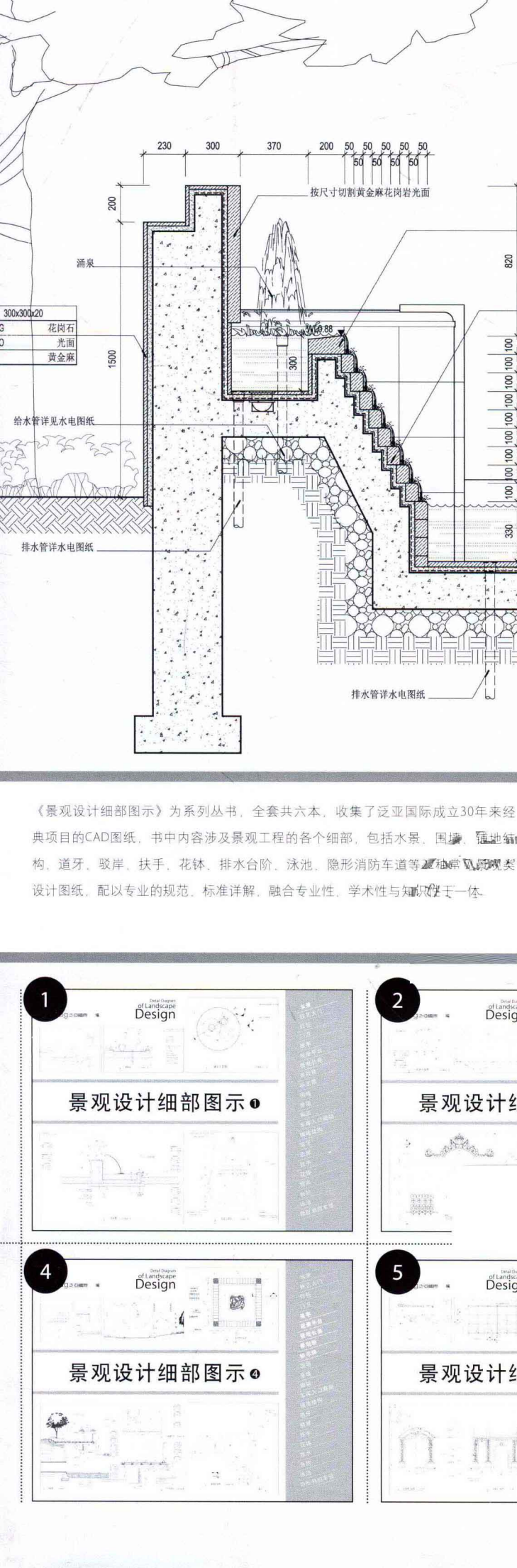
Feature 专题

2012 AIA Awards Recipients

2012 AIA 获奖作品精选

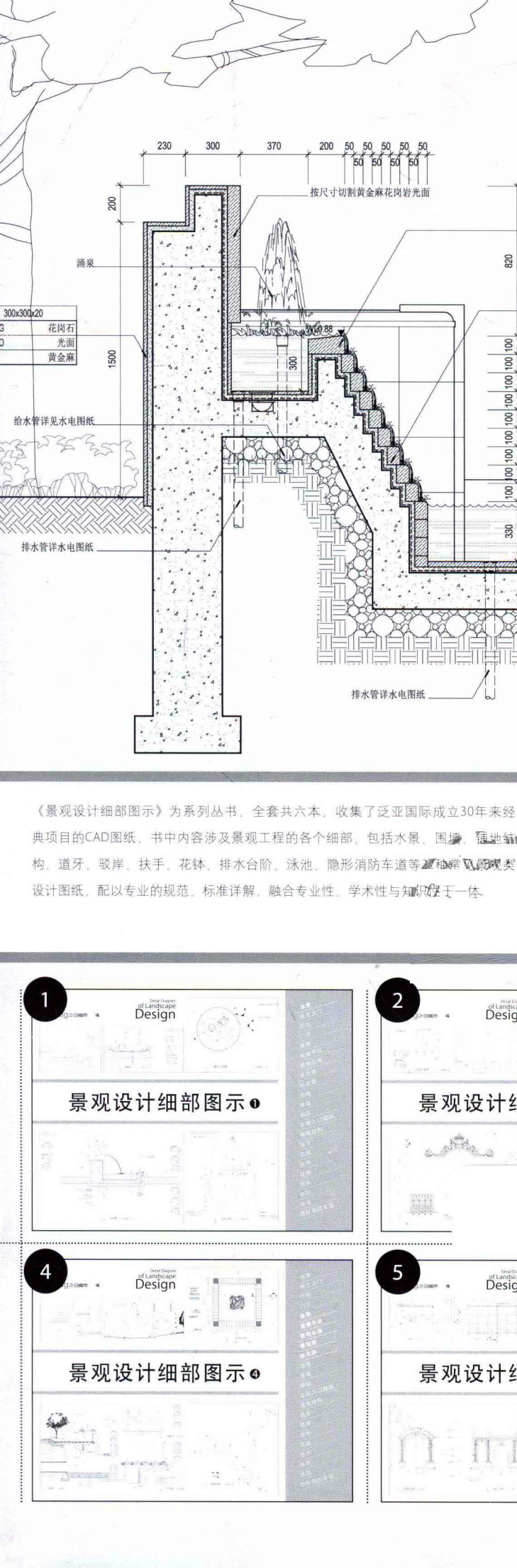
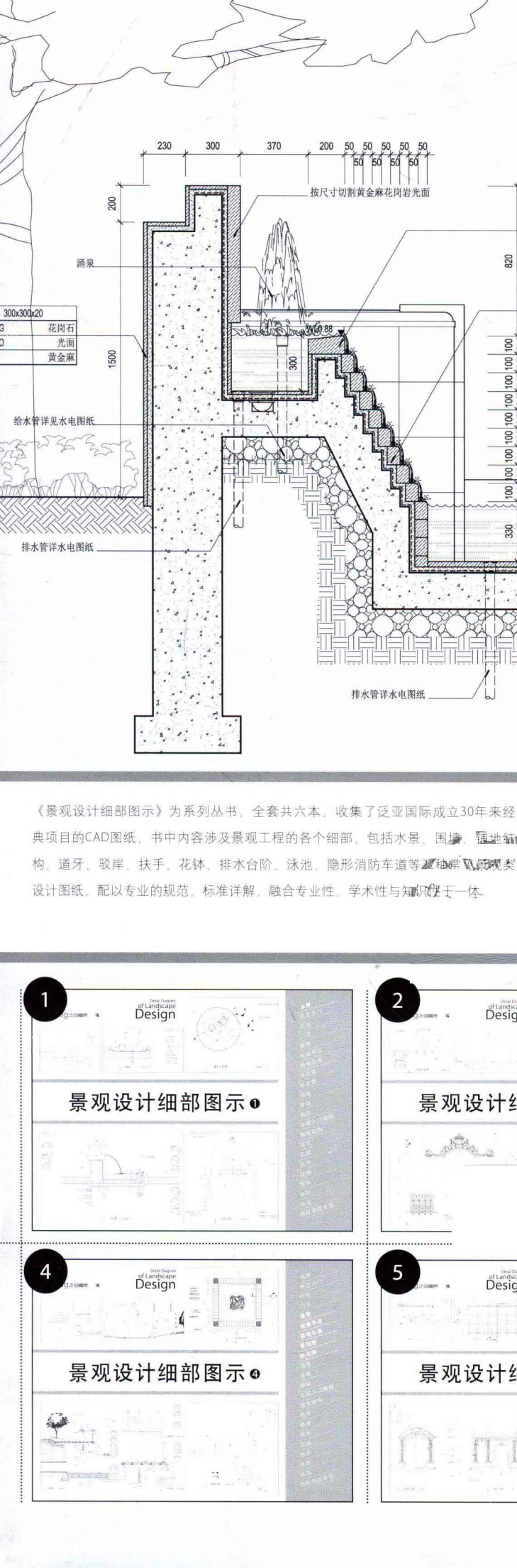
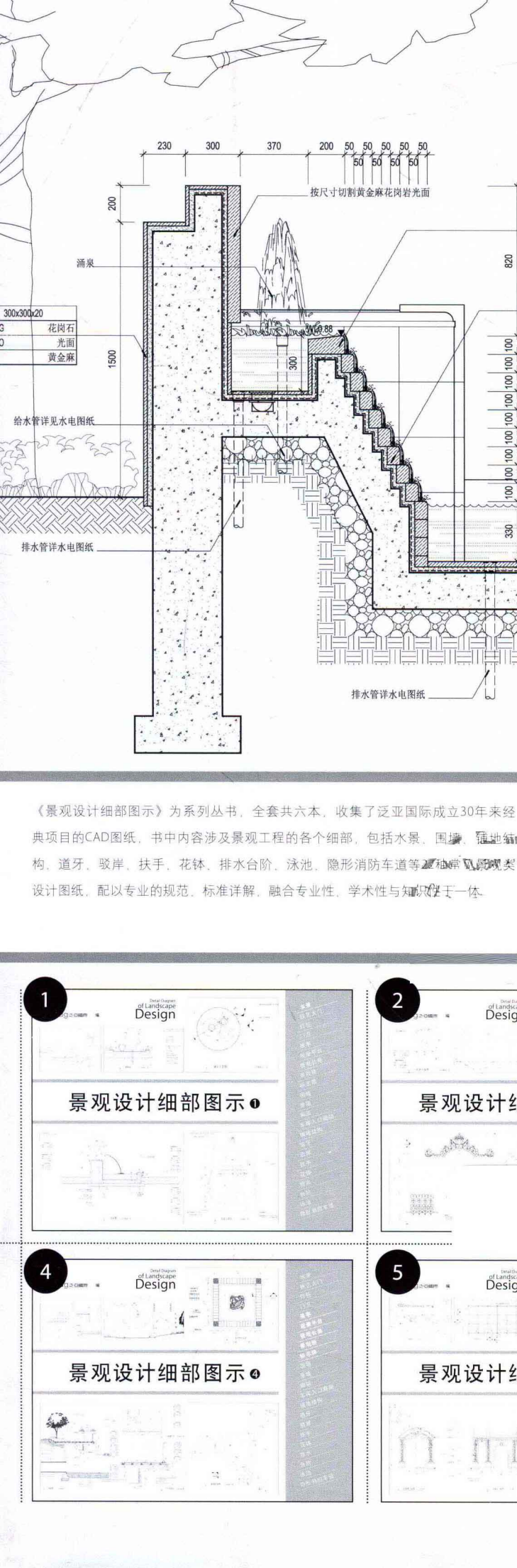
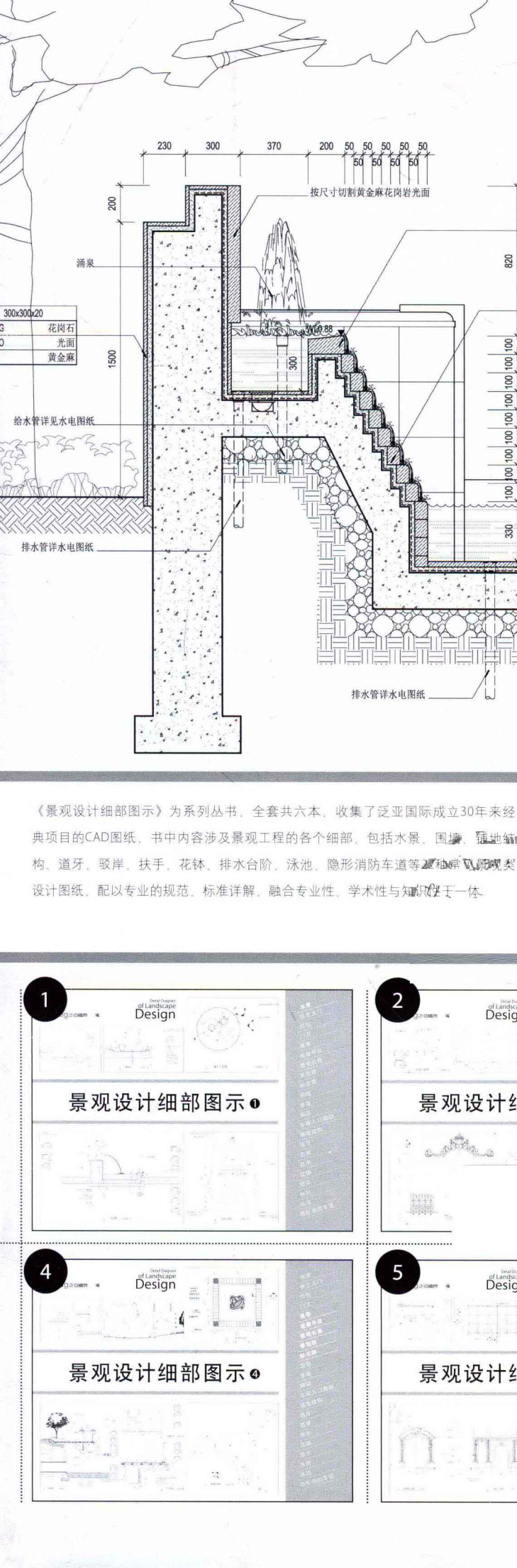
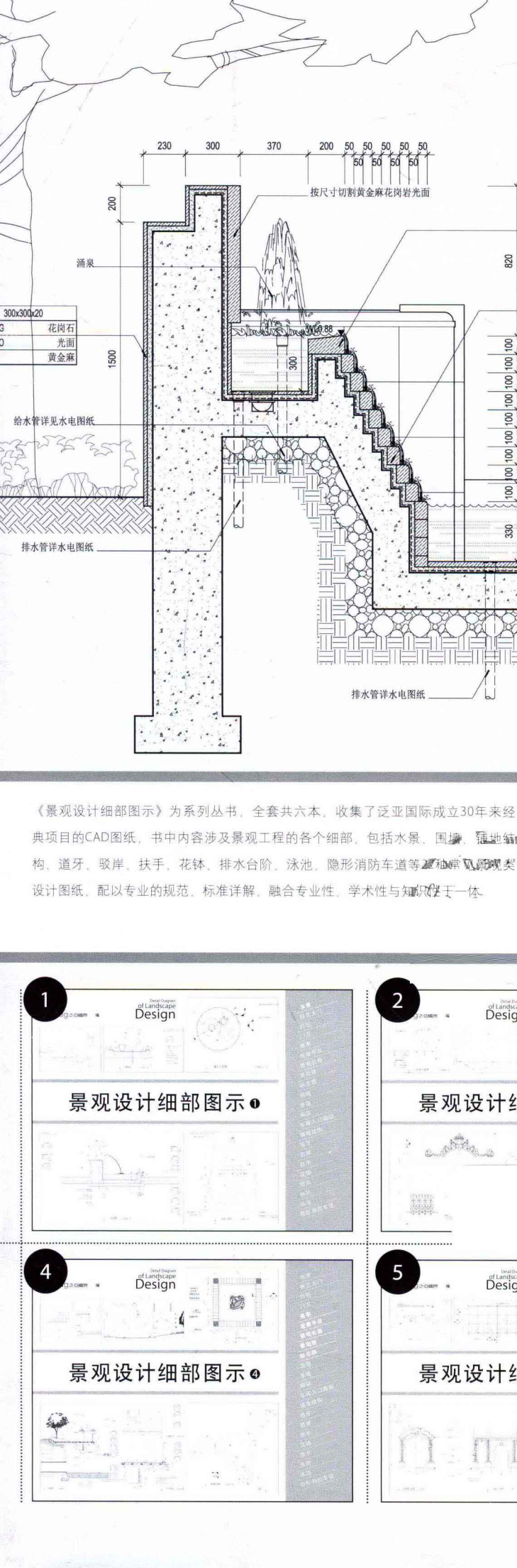
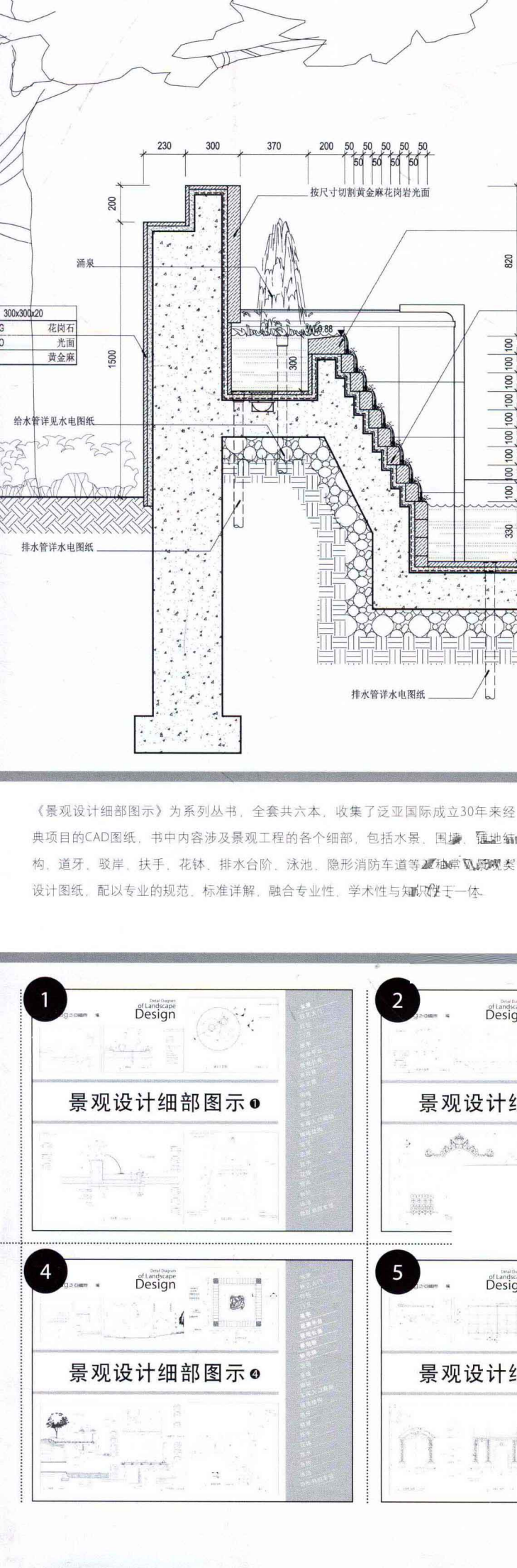
江苏人民出版社

《景观设计细部图示》为系列丛书，全套共六本，收集了泛亚国际成立30年来经典项目的CAD图纸，书中内容涉及景观工程的各个细部，包括水景、围墙、铺地结构、道牙、驳岸、扶手、花钵、排水台阶、泳池、隐形消防车道等20种景观类型设计图纸，配以专业的规范、标准详解，融合专业性、学术性与知识性于一体。



《景观设计细部图示》为系列丛书，全套共六本，收集了泛亚国际成立30年来经典项目的CAD图纸，书中内容涉及景观工程的各个细部，包括水景、围墙、铺地结构、道牙、驳岸、扶手、花钵、排水台阶、泳池、隐形消防车道等2000余个景观类型设计图纸，配以专业的规范、标准详解，融合专业性、学术性与知识性于一体。

《景观设计细部图示》为系列丛书，全套共六本，收集了泛亚国际成立30年来经典项目的CAD图纸，书中内容涉及景观工程的各个细部，包括水景、围墙、铺地结构、道牙、驳岸、扶手、花钵、排水台阶、泳池、隐形消防车道等20种景观类型设计图纸，配以专业的规范、标准详解，融合专业性、学术性与知识性于一体。



所有人名按字母顺序排列 Name in alphabetical order

Publisher 出版人 Sun Xueliang  
Distributor 发行人 Sun Xueliang  
Committee 编委 Alexander Blakely, Altat Master, Andre Kikoski,  
Bjarke Ingels, Brad Tomecek, Christopher Herr, Davide Macullo,  
Diego Burdi, Dwayne Oyler, Evzen Novak, Fernando Forte, James  
Mary O' Connor, Jenny Wu, Kevin Sietmann, Lourenço Gímenes,  
Mack Scogin, Masaru ITO, Matthias Altwicker, Merrill Elam, Paul  
Filek, Rand Elliott, Robert Oshatz, Rodrigo Marcondes Ferraz,  
Shigeo YOKOTA, Stefano Tordiglione, Steven Holl, Vlado Valkof

Editor-in-Chief 执行主编 石莹 Erica  
Marketing Manager 市场总监 林佳艺 Rita  
Editor-in-Charge 编辑部主任 张晓华 Kitty  
English Editors 英文编辑 毛玲玲 Marian 石莹 Cindy  
王培娟 Joan

Art Editor 美术编辑 夏金梅 Candy  
Contributing Editors 特约编辑 Aileen Forbes-Munnelly,  
Andre Kikoski, Brad Tomecek, Cateline Leung, Catherine Meng,  
Christopher Boyce, Daria Pahhota, Dwayne Oyler, James Mary  
O' Connor, Julia van den Hout, Marcellus Lilley, Margaret  
Fletcher, Mayumi MORINAGA, Michelle Jameson, Robert Oshatz,  
Rodrigo de Moura, Shigeo YOKOTA, Sonia Germain, Vlado Valkof

Price 定价 USD 29 RMB 98

Add: 上海市虹口区天宝路886号天宝商务楼3楼  
3rd Floor, NO. 886 Tianbao Road, Hongkou District, Shanghai,  
China  
Post Code: 200086  
Tel: 86-21-65018097-378  
Fax: 86-21-65018097-188  
E-mail: info@internationalnewarchitecture.com  
Website: www.internationalnewarchitecture.com

Media Link 媒体支持

X-COLOR, international new landscape AIA

Supportive Companies & Associations 理事单位



EADG 泛亚国际

#### 图书在版编目 (CIP) 数据

国际新建筑. 12 / 凤凰空间·上海编. — 南京 :  
江苏人民出版社, 2012. 12  
ISBN 978-7-214-08955-7

I. ①国… II. ①凤… III. ①建筑设计—作品集—世  
界—现代 IV. ①TU206

中国版本图书馆CIP数据核字 (2012) 第279452号

#### 国际新建筑12

策划编辑: 石莹 林佳艺

责任编辑: 刘焱

特约编辑: 石莹

出版发行: 凤凰出版传媒股份有限公司

江苏人民出版社

天津凤凰空间文化传媒有限公司

邮 编: 210009

印 刷: 上海当纳利印刷有限公司

开 本: 965毫米×1270毫米 1/16

印 张: 12

字 数: 96千字

版 次: 2012年12月第1版

印 次: 2012年12月第1次印刷

书 号: ISBN 978-7-214-08955-7

定 价: 98.00元

销售电话: 022-87893668

网 址: www.ifengspace.com

(本书若有印装质量问题, 请向销售部调换)



美国建筑师协会（AIA）成立于1857年，至今已有155年的历史，在世界建筑界已形成一股举足轻重的力量。这个跨越了3个世纪的协会伴随着建筑学的发展，见证了建筑领域内一幕幕华丽的转变与质的飞跃。毫不夸张地说，在这短短的155年当中，建筑理论和实践的发展远远超过了过去上千年艰难的摸索。作为一个有影响力的建筑奖项，AIA的历史也印证了人类建筑的轨迹。

编辑们此次为大家精选了部分2012年AIA获奖作品，从各个角度展现当代建筑的水准。耳闻不如一见，真正的大师给我们留下的不仅仅是响亮的名号，更是浮华背后充满思想与智慧的作品。书中每一页都流露着令人感动、心动，甚至是激动的灵魂。一见倾心，再见难忘——这就是大作的力量！

书面的轻描淡写远不足以呈现建筑设计的魅力，编辑们只愿由此为广大读者推开通向人类建筑未来的一扇窗，愿世界建筑步步向前，深入世界每一个角落，将它的美丽带进人的内心，带入未来。

American Institute of Architects (AIA), which was established in 1857, has seen a history of 155 years till now. It comes across three centuries and gradually occupies an important role in architecture, which develops dramatically fast in this period. Actually, the advancement of architectural theory and practice has surpassed those of the last difficult millennium. As an influential award presenter, AIA has been tracing about the career of each excellent architect, and even human architecture history....

Words are but wind. You'll be deeply impressed by the rich thought and wisdom of master architects when reading the articles for yourself. We cover several 2012 AIA Award projects in this issue, showing the achievement of architecture in recent years. You'll feel dissolved and affectionate, even be excited. Love you once, love you twice—that's the power of masterpieces—never just an undeserved reputation! The articles are just a delicate and partial touch on architecture. We'd like to encourage talented architects and designers to contribute more to the world by this way. We wish to see the bright future of architecture, spreading culture everywhere, enriching people's soul.

## 2012 AIA Awards Recipients

### ——2012 AIA 获奖作品精选——

# Contents 目录

## 专题 Feature

- |       |   |   |
|-------|---|---|
| 006   | 克努特哈姆森博物馆<br>Knut Hamsun Center   | 受到哈姆森作品的启发，Steven Holl建筑事务所设计了一个“空小提琴盒”造型的楼层，阳台的设计看起来仿佛“女孩儿挽起袖子正在擦拭黄色的窗户”。<br>Inspired by passages of Hamsun's texts, there is an "empty violin case" deck, while a viewing balcony is like the "girl with sleeves rolled up polishing yellow panes".   |
| <hr/> |   |   |
| 020   | 城市海洋科学博物馆<br>Cité de l'Océan et du Surf   | 建筑的造型由立体概念“苍穹下/深海处”演化而来。内凹的“苍穹下”构建了主要的外部广场，“海洋广场”面向蓝天和大海，遥望远方的天际线。凸起的天花板结构构筑起了“深海处”的展示空间。<br>The building form derives from the spatial concept "under the sky" / "under the sea". A concave "under the sky" shape forms the character of the main exterior plaza, the "Place de l'Océan", which is open to the sky and sea, with the horizon in the distance. A convex structural ceiling forms the "under the sea" exhibition spaces. |
| <hr/> |   |   |
| 030   | 8字形大楼<br>8 House  | 8字形大楼的中心被一分为二，形成两个不同的空间。大楼的中心主要是500平方米的公用设施。<br>The bow-shaped building creates two distinct spaces, separated by the center of the bow which hosts the communal facilities of 500 m <sup>2</sup> .   |
| <hr/> |   |   |
| 044   | 盖茨电脑科技中心和希尔曼未来发电技术中心<br>Gates Center for Computer Science and Hillman Center for Future Generation Technologies | 对于项目最好的诠释是：一个能凸显卡内基梅隆和电脑科学院在世界级学术殿堂中的显著地位的建筑。<br>An architecture that represents Carnegie Mellon University's and the School of Computer Science's exceptional status among the world's leading academic institutions is best informed from within the project's own situation.   |
| <hr/> |   |   |
| 052   | 古根海姆博物馆的莱特饭店<br>The Wright at the Guggenheim Museum   | 雕塑的形态营造出了外翻的天花板。浪状的墙壁变成了舒适的座椅。弧形酒吧和公共餐桌使空间更具动感。玩味的造型使游客获得多样的体验。<br>The sculptural forms create a flared ceiling. The undulating walls become comfortable seating. The arced bar and communal table animates the space. The playfulness of these forms offers a dynamic experience for visitors.   |
| <hr/> |   |   |
| 058   | 费耶特维尔2030：交通之城<br>Fayetteville 2030: Transit City Scenario  | 2030交通之城方案是一个富足项目，因为在这个方案下，每家每户的交通成本将降到年收入的16%。<br>The 2030 Transit City Scenario plan is a prosperity-building program since the average household in rail transit cities spent 16% of its annual income on transportation.  |
| <hr/> |   |   |
| 072   | Grangegorman总体规划<br>Grangegorman Master Plan  | 该设计将为校园提供世界一流的创新型便利设施，并通过现代手法将传统的学院建筑风格进行完美诠释。<br>The design offers world-class, innovative facilities for both DIT and HSE, enhancing their identity and image by employing a contemporary interpretation of traditional collegiate quads.   |
| <hr/> |   |   |
| 080   | 金属盾包裹的房子<br>Shield House  | 该项目将一个高高的、弯曲细长的流通空间与矩形的居住空间并置。<br>This urban infill project juxtaposes a tall, slender curved circulation space against a rectangular living space.   |
| <hr/> |   |   |

建筑 Architecture

086 圣西拉斯小学  
St Silas Primary School

---

096 成城庭园  
SEIJO CORTY

---

104 经堂庭园  
KYODO CORTY

---

116 中央舞台——南加州建筑学院毕业作品展  
Center Stage: SCI-Arc Graduation Pavilion

---

124 锦州新区医疗中心  
Jinzhou New Area Medical Center

---

128 Natura圣安德烈分店  
Natura's Showroom Santo André

---

138 张氏别墅  
Cheung Residence

---

142 Jansen总部大楼：树立愿景  
Jansen Campus: Building A Vision

---

156 奥克兰交通科技博物馆飞机展示厅  
MOTAT Aviation Display Hall

---

162 韦斯住宅  
Weiss Residence

---

室内 Interior

168 独具特色的办公空间  
ImageNet Houston

---

174 飞檐魅影  
HIMEJI FORUS

---

178 暗黑潮流—Roar品牌旗舰店  
Roar (Daikanyama)

---

182 apple & pie童鞋专卖店  
apple & pie Children-shoe Boutique

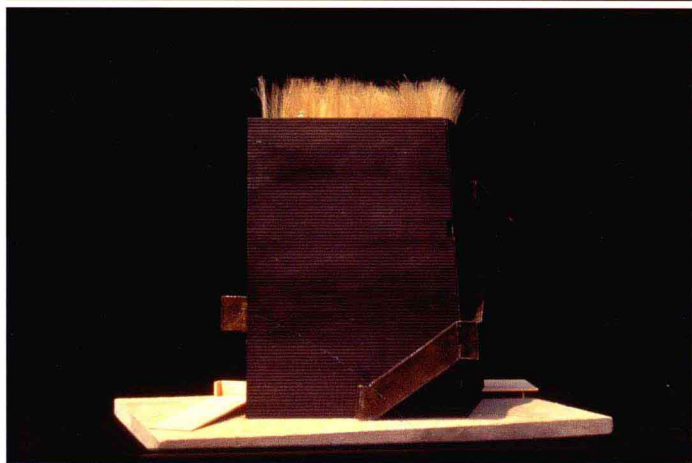
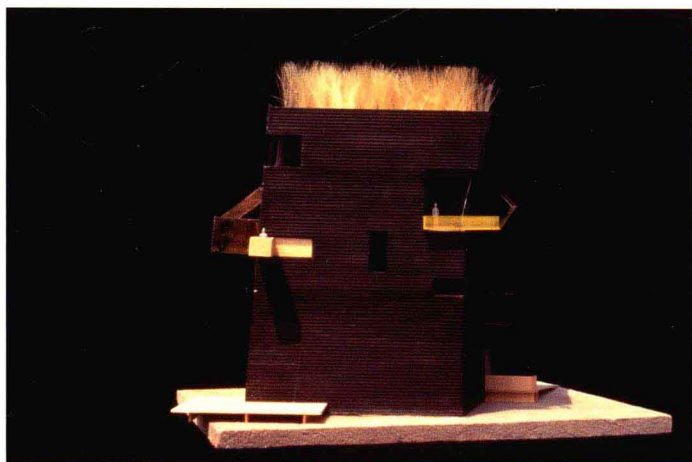
---

188 布朗托马斯珠宝店  
Brown Thomas Jewellery

---



阳台如小女孩挽起的衣袖  
The balcony looks like the sleeves of a little girl



| Steven Holl Architects |

# Knut Hamsun Center

## 克努特哈姆森博物馆

2012 Gold Medal Recipient 2012金奖

为了表彰史蒂文·霍尔对建筑的杰出贡献，他的名字将被刻在华盛顿AIA总部大厅的荣誉墙上。

霍尔之前获得的奖项包括：

- 2个英国皇家建筑师协会国际奖
- 9个美国建筑师协会国家荣誉奖

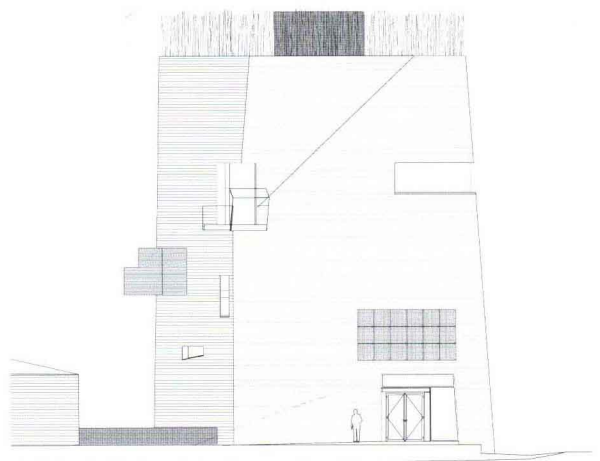
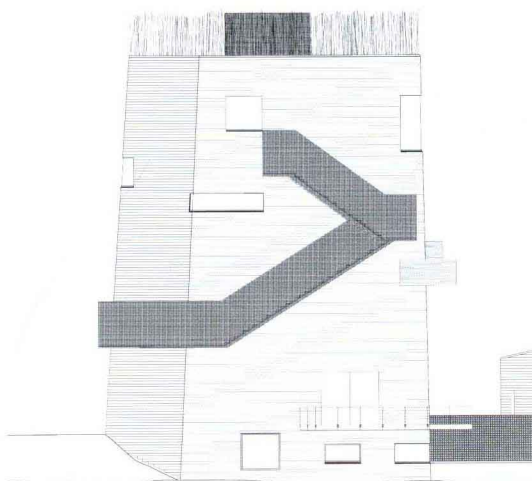
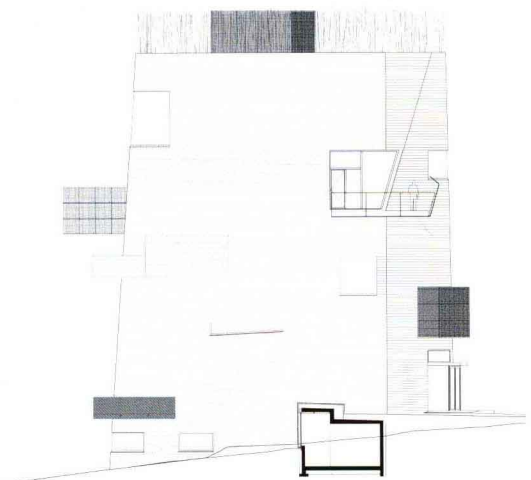
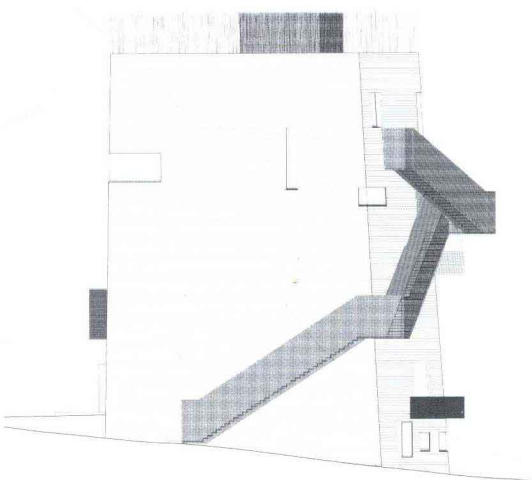
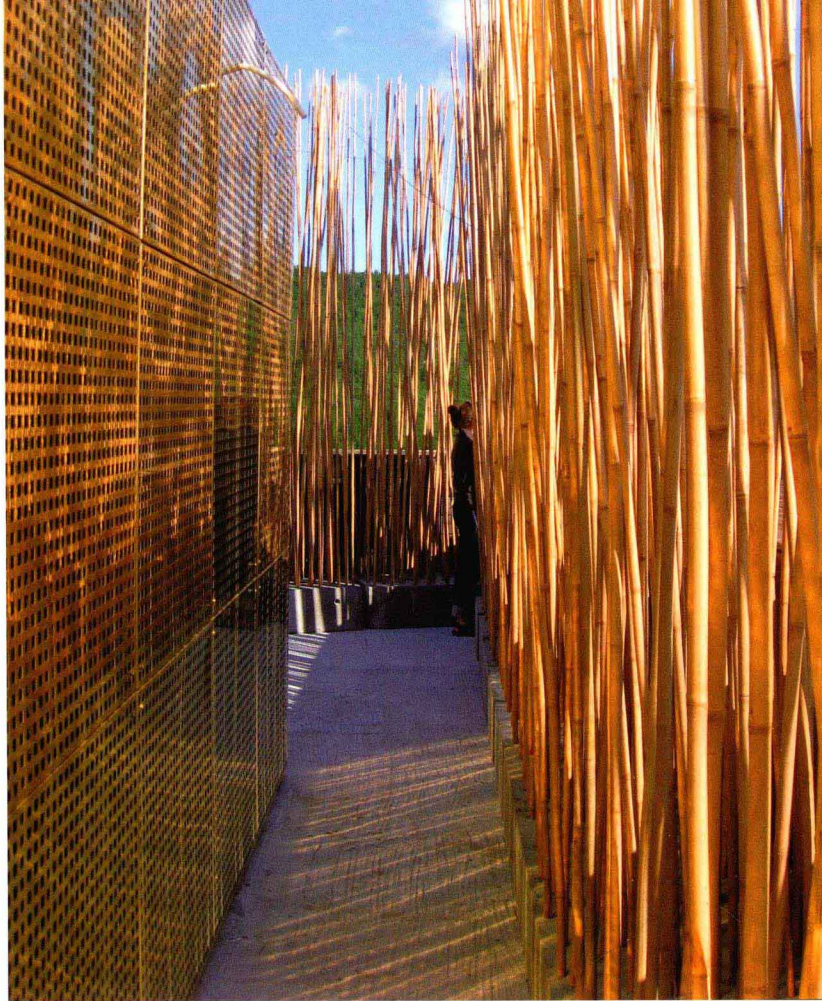
In recognition of Steven Holl's legacy to architecture, his name will be chiseled into the granite Wall of Honor in the lobby of the AIA headquarters in Washington, D.C.

Holl's previous awards include:

- 2 RIBA International Awards
- 9 AIA National Honor Awards

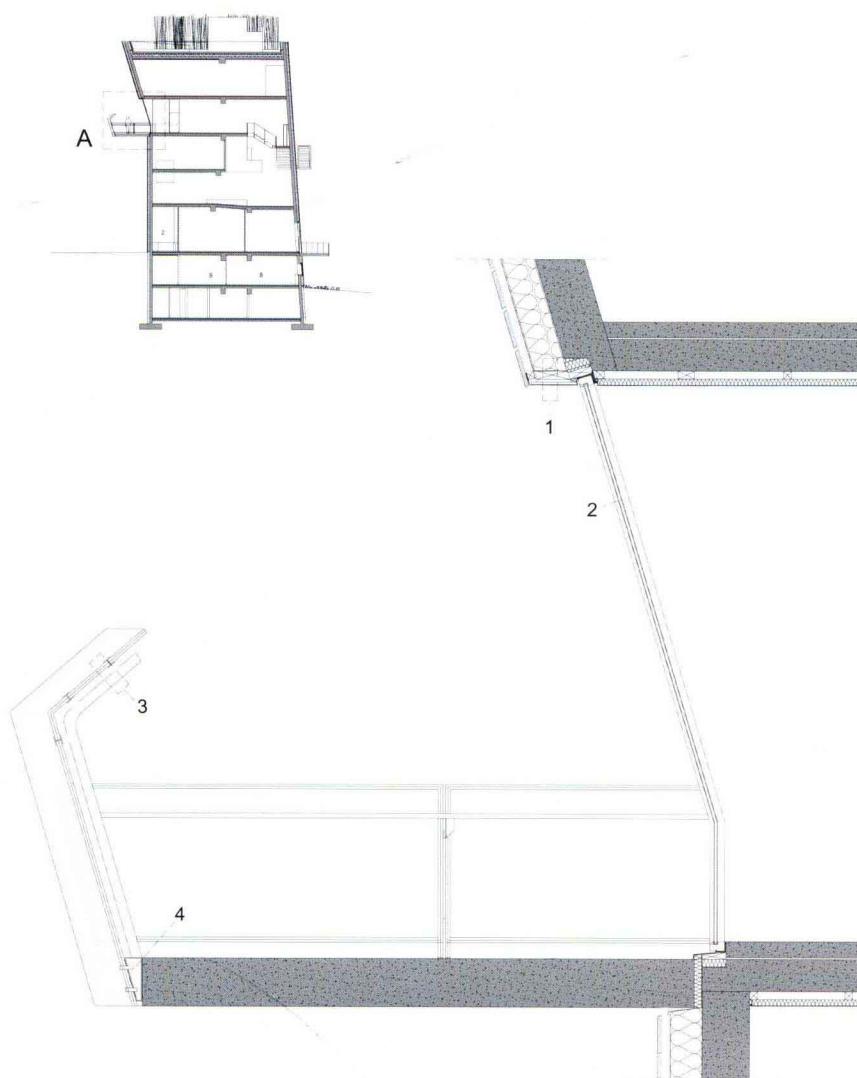
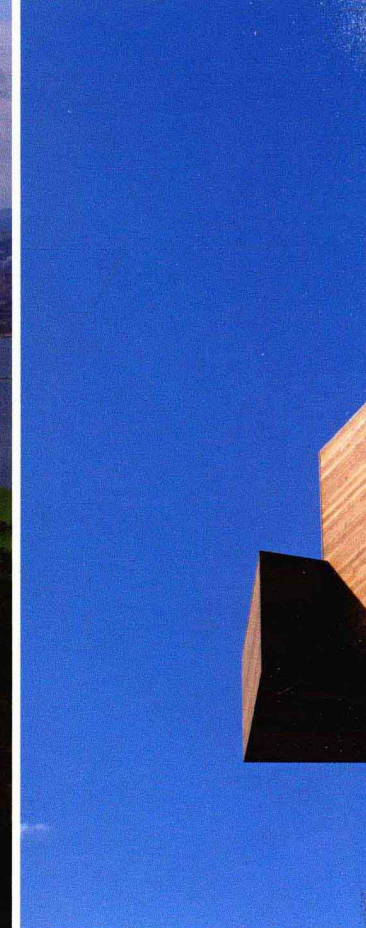


外部设计思路手绘图  
Concept sketch exterior



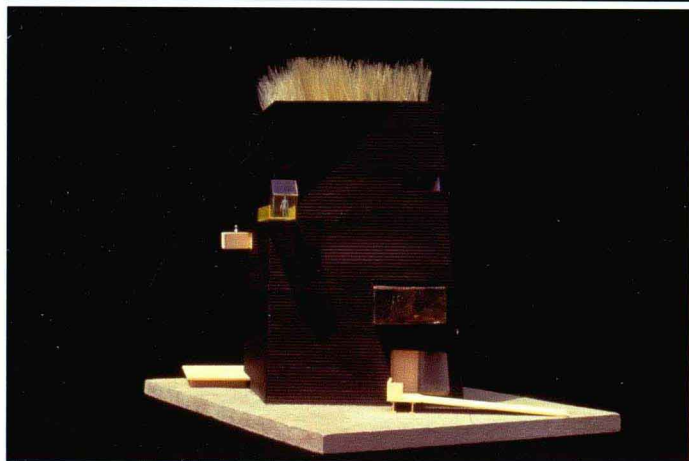
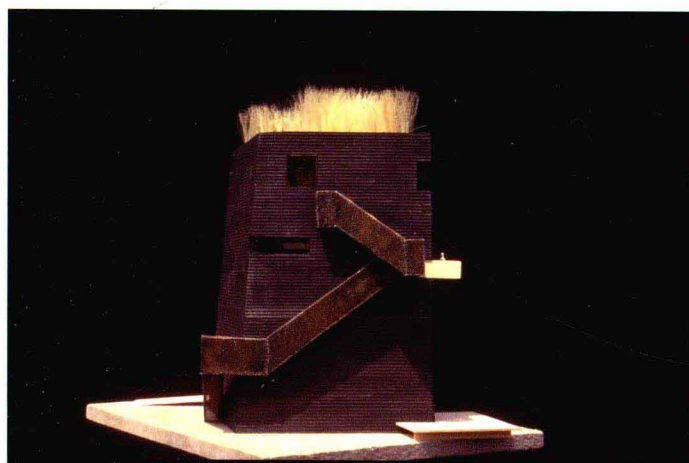
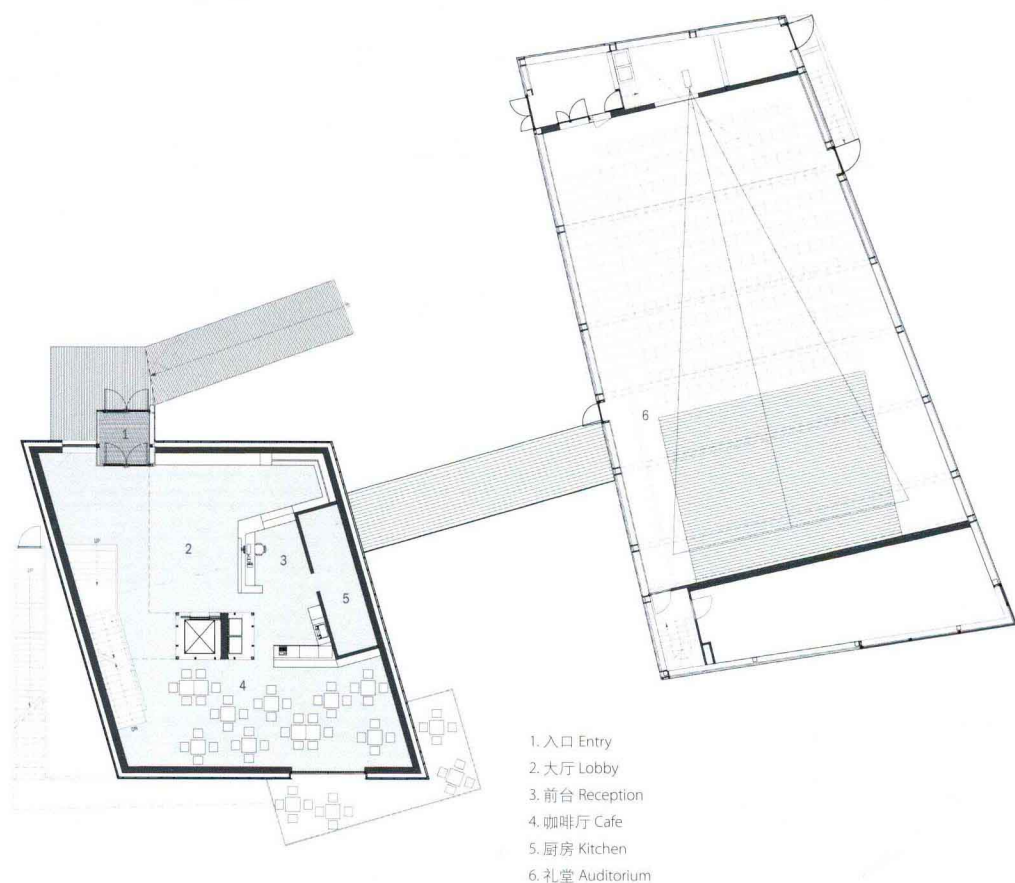
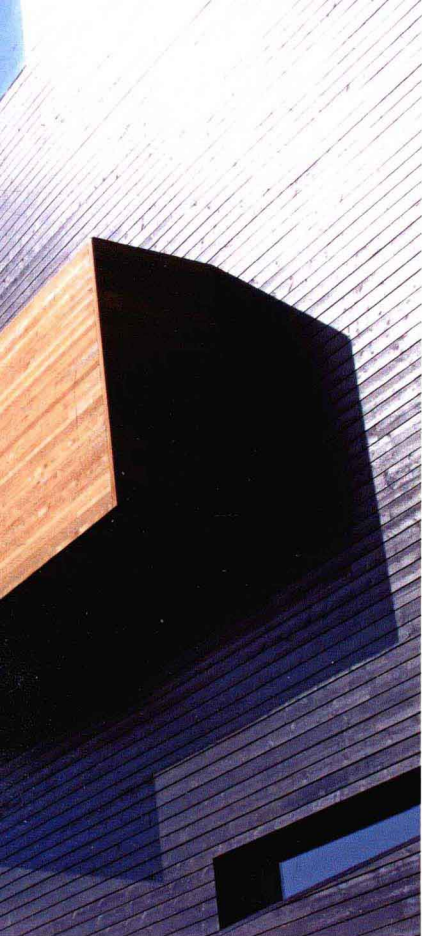


外部阳台视野极好。可以眺望山水相接的美景  
The exterior balcony overlooking mountains and waters



1. 1/8" (3mm) Thick sheet steel  
5/8" (15mm) plywood panel, frame  
of 2 1/8x7 7/8" (200mm) mineral  
wool insulation
2. Aluminium window with black finish  
and 1/8-5/8-1/8" (4/15/4mm)  
double glazing
3. 1/8" (3mm) Thick galvanized steel  
T-profile with welded steel plate  
and threaded steel pins  
supporting 3/8 + 3/8" (10+10mm)  
transparent yellow glass
4. 1/8" (3mm) thick box-shaped  
galvanized steel plate closure and  
fixing
5. 4x4" (100x100mm) steel box profile  
fastening projecting steel frame to  
reinforced concrete edging
6. Cladding in 1/8" (2.5mm) thick steel  
plates, frame supporting cladding  
in HEB 100 steel beams
7. 5/16-1/8-5/16" (8/7/8mm) double  
glazing assembly in frame at slab  
edge
8. 1/16" (2mm) thick shaped sheet  
finish
9. 4x9 1/8" (100x230mm) steel angle  
profile
10. floor in 4" (100mm) black concrete  
with ground finish, 1 1/4" (30mm)  
board insulation, projecting 7  
7/8" (200mm) reinforced concrete  
slab, 4" (100mm) board insulation,  
2x4" (50x100mm) steel C-Profile  
fastening 1/8" (2.5mm) brass grille  
cladding
11. 1/8-5/8-1/8" (4/16/4mm) wood  
double glazing assembly
12. interior sill in 1/8" (3mm) sheet  
brass, 5/8" (16mm) plywood panel,  
5/8x1 5/8" (15x40mm) wood  
batten, 1 5/8x2 5/8" (40x65 mm)  
steel C-Profile sandwiching 2  
5/8" (65mm) board insulation, 1/8"  
(3mm) sheet steel installation  
space
13. Canopy roof in 1/8" (3mm) sheet  
brass, 3 1/8" (80mm) max H board  
insulation on 17 degree slope, 5/8"  
(16mm) gypsum board, 1  
5/8x4 1/2 (40x115mm) steel  
C-Profile sandwiching 4  
1/2" (115mm) board insulation,  
1/8" (3mm) sheet steel, false  
ceiling in removable 1/8" (3mm)  
brass panels
14. 1/8" (3mm) Sheet brass, 5/8" (16mm)  
gypsum board,  
1 3/8x2" (35x50mm) wood, 2  
3/8" (60mm) board insulation, 2  
3/4x7 1/8" (70x180mm) steel  
C-Beam, gutter, IPE 120 steel beam
15. Steel entrance door with  
1/16-5/8-1/16" (5/15/5mm) double  
glazing
16. Exterior walkway in  
2x108 1/4" (50x2750mm) wood,  
9 3/8x3 1/8" (250x80mm) wood  
joists with pair of 3/8x4  
3/4" (10x120mm) bolted steel plates  
securing beams to reinforced  
concrete foundation, gravel bedding
17. 1 1/2" (40mm) Galvanized steel grill,  
4" (100mm) concrete, 2" (50mm)  
board insulation,  
11 7/8" (300mm) reinforced concrete  
slab
18. 6 1/4x6 1/4" (160x160mm) steel angle  
profile
19. 1 5/8" (40mm) Thick door with  
3 1/2x2 5/8" (90x65mm) steel frame  
with double glazing
20. Projecting walkway roof formed by  
4x1" (100x25mm) untreated cedar  
wood, (30x30mm) wood beams,  
1/8" (3mm) sheet steel, 5/16" (8mm)  
wood panel,  
5 1/2" (140mm) max H wood beam, 1  
3/8x2" (35x50mm) wood rafters, false  
ceiling in 1" (25mm) cedar wood  
panels
21. Gutter
22. External wall in 4x1" (100x25mm)  
untreated cedar wood, frame of  
4" (100mm) wood, 4x1" (100x25mm)  
untreated cedar wood
23. 4x1" (100x25mm) untreated cedar  
wood frame of 1 1/4x1 1/4"  
(30x30mm) wood, 7 7/8" (200mm)  
reinforced concrete slab

A



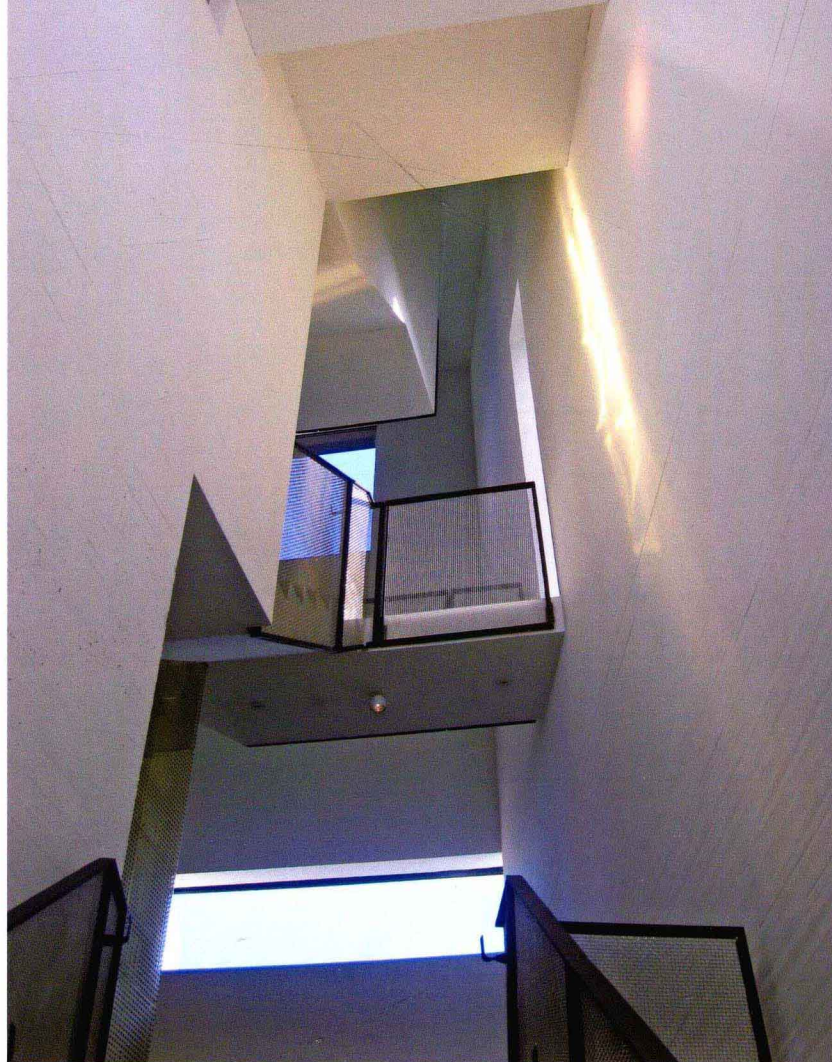
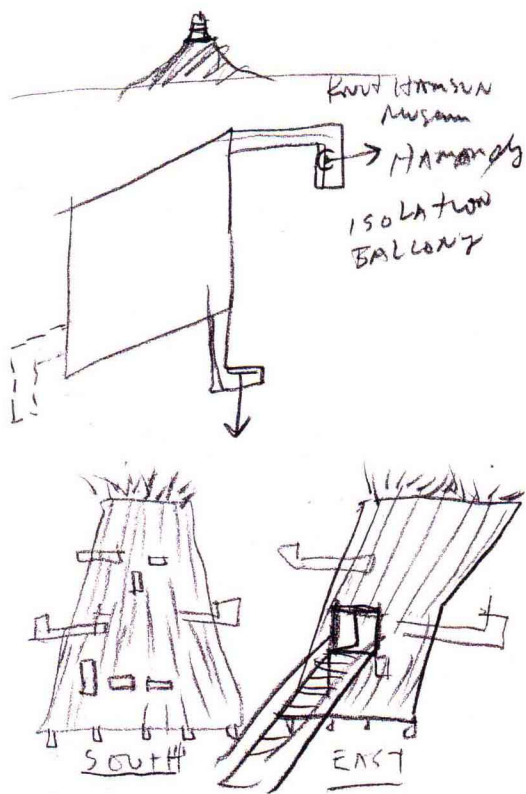
克努特·哈姆森是20世纪挪威最具创意的作家，同时是诺贝尔文学奖获得者，在他的第一本小说《饥饿》中创造了一种新的写作手法。这座纪念哈姆森的博物馆位于北极圈之上的哈马略，普瑞斯泰德村庄附近，与作者成长的农场毗邻。占地2 508平方米的博物馆囊括了展示区、图书馆及阅览室、咖啡馆和博物馆礼堂在内的几部分建筑。受到哈姆森对于人性复杂性探索的影响，被看做是一个建筑在空间和光线交错中的典型精神的浓缩，作为建筑体系中哈姆森的缩影。受到哈姆森作品的启发，Steven Holl建筑事务所设计了一个“空小提琴盒”造型的楼层，阳台的设计看起来仿佛“女孩儿挽起袖子正在擦拭黄色的窗户”。

该博物馆的设计理念“建筑等于人体：战场上的无形力量”由内而外的彰显出来。外部的木结构被隐藏着的冲击力量刺穿表面。建筑体的“脊梁”为中央电梯，由带孔的黄铜装饰而成。内部涂成白色的水泥板结构被日光的对角光线照亮，据计算，光线在每年特定日子会反弹并穿过该区域。柏油黑木外层影射挪威的中世纪木板教堂，顶楼花园上的竹制长槽模仿的是挪威传统草皮房顶。

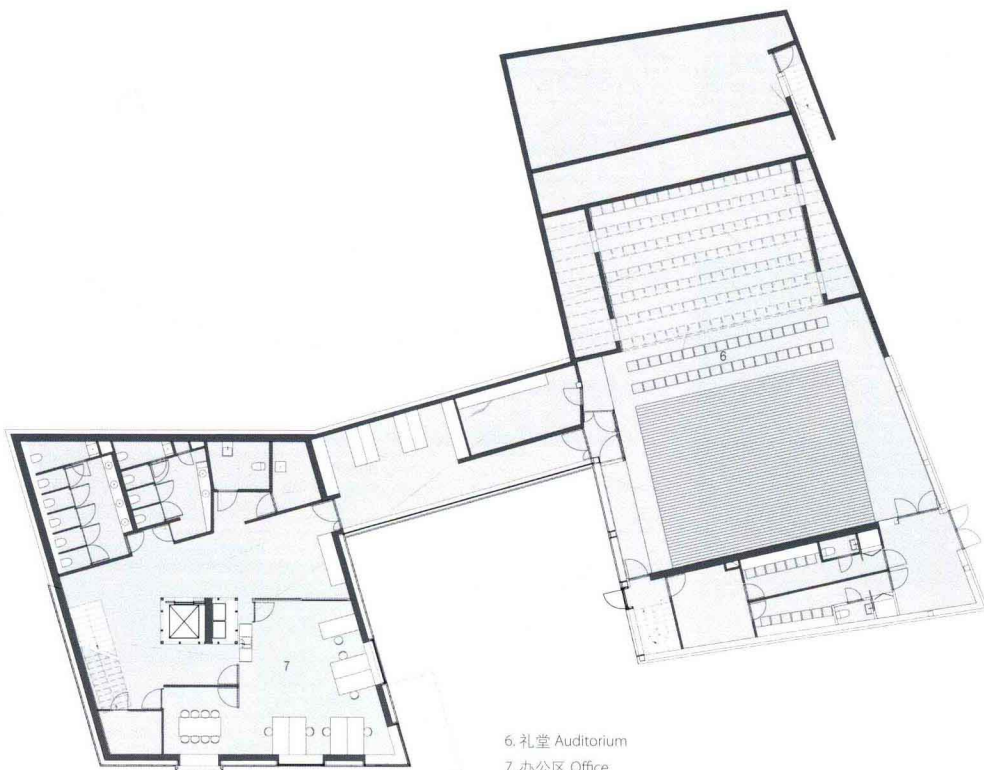
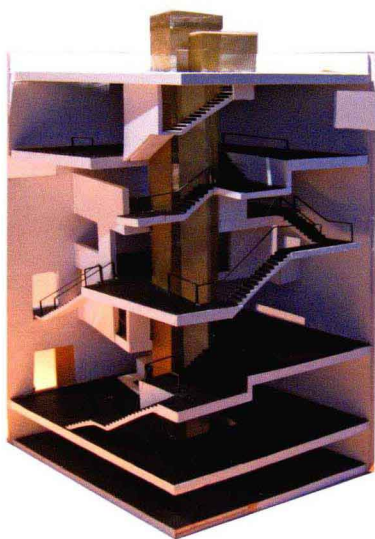
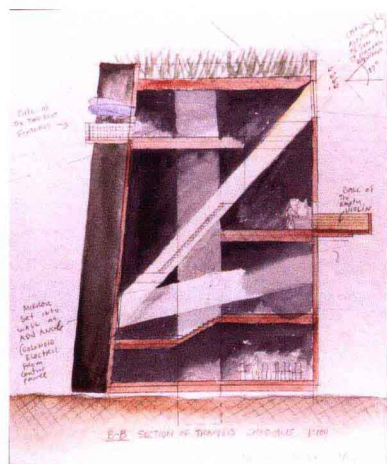
礼堂与主楼通过一条底层的大厅走廊相连，这一设计充分利用了自然地形，让自然光线照进室内。



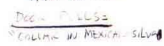
内部镂空墙壁  
Interior perforating walls

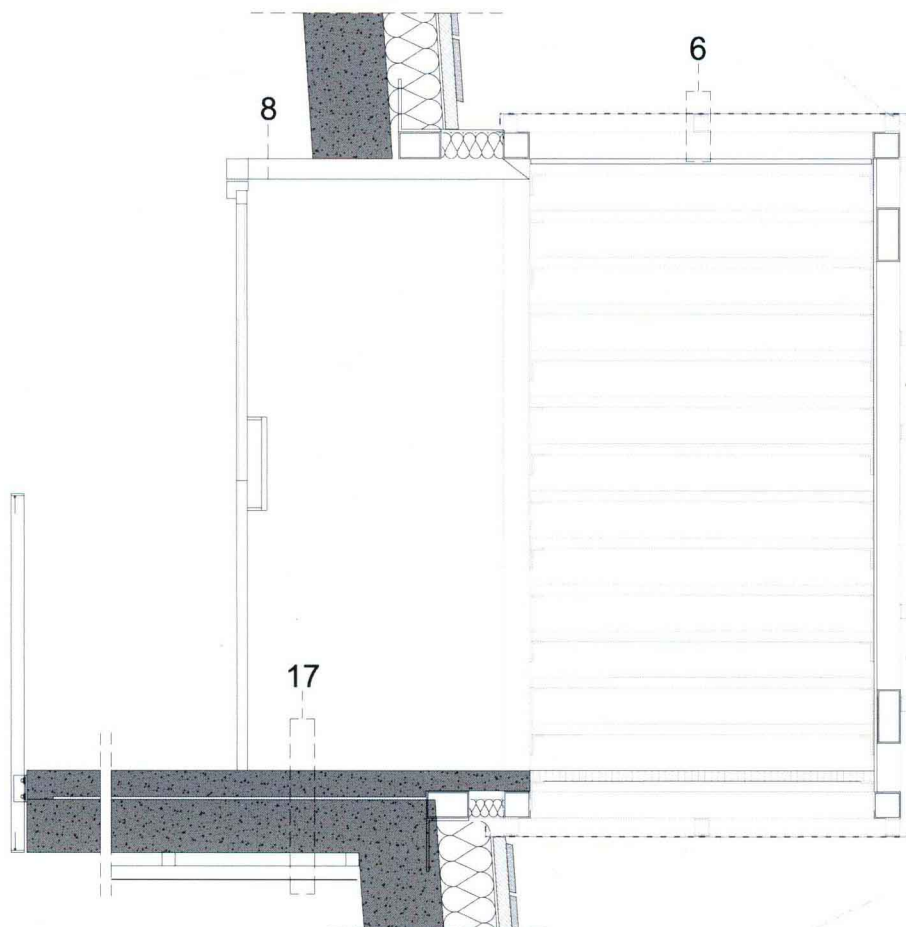


错落有致的内部空间  
Interior space



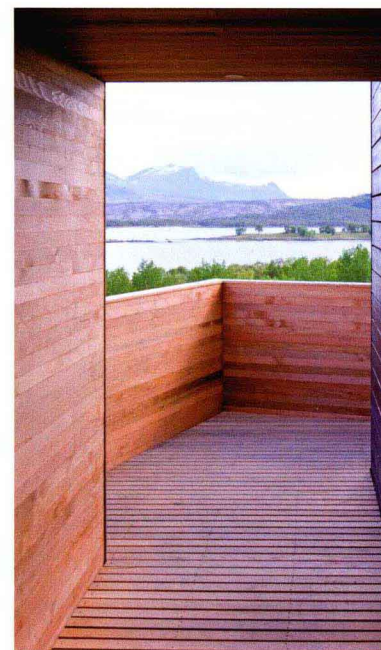
6. 礼堂 Auditorium  
7. 办公区 Office

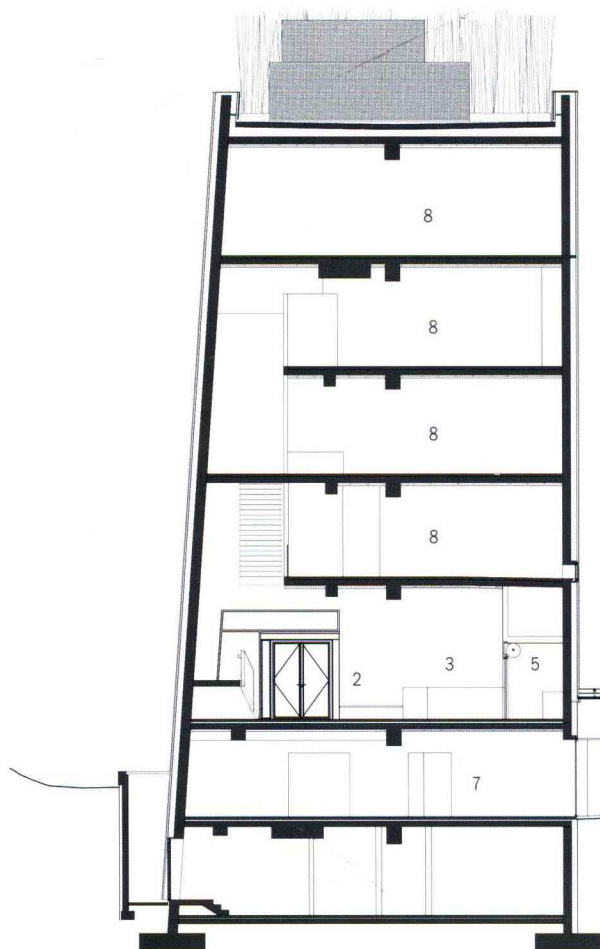
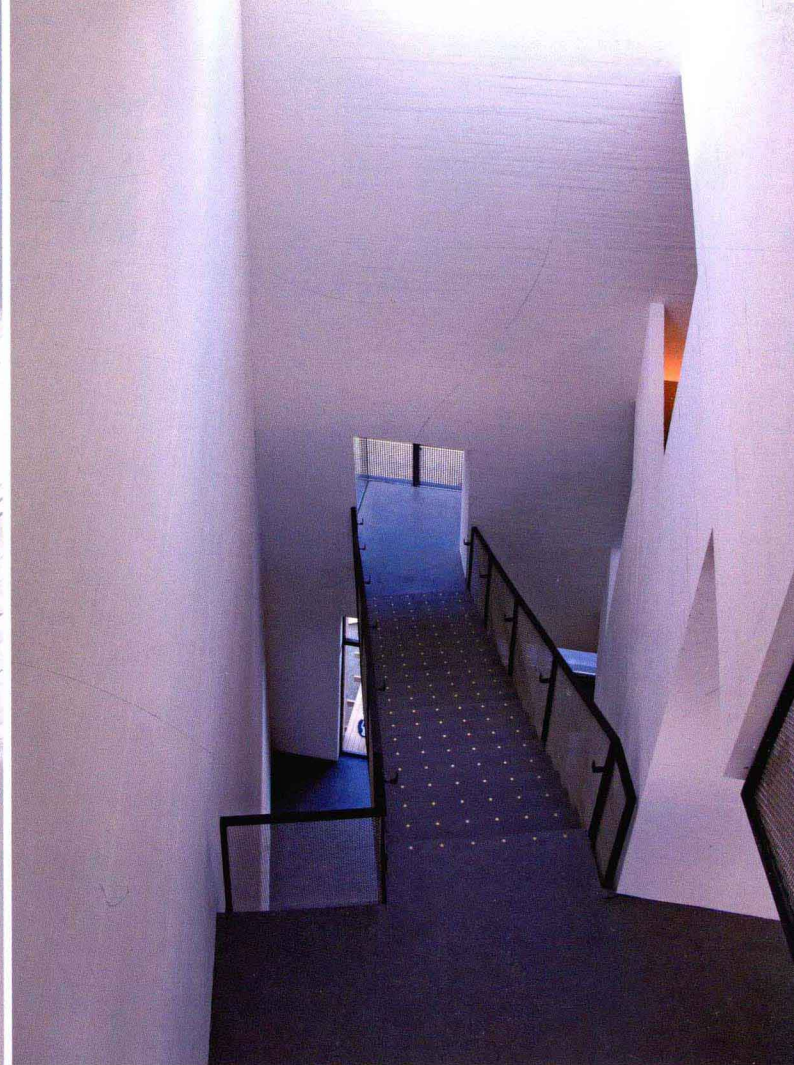
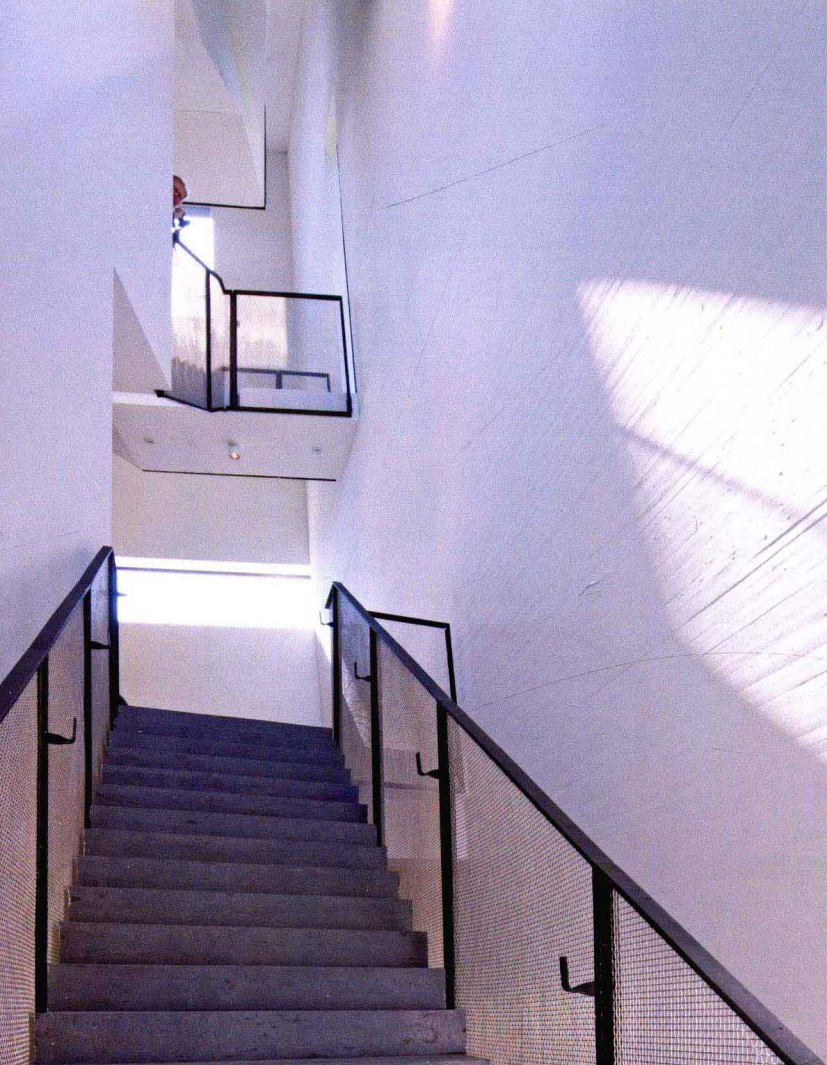




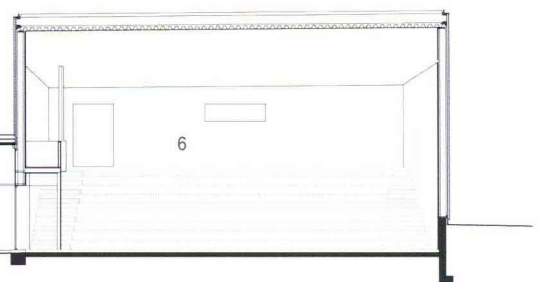
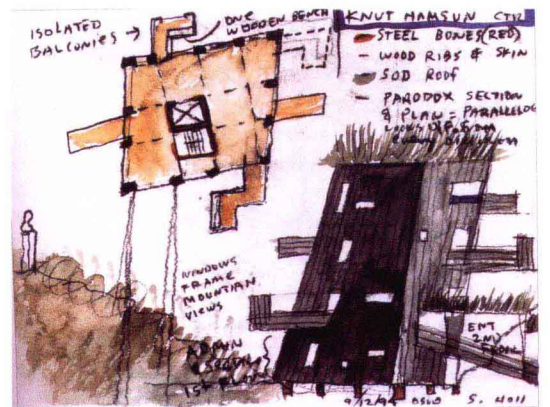
C

1. 1/8" (3mm) Thick sheet steel  
5/8"(15mm) plywood panel, frame of  
2 1/8x7 7/8" (200mm) mineral wool  
insulation
2. Aluminium window with black finish  
and 1/8-5/8-1/8"(4/15/4mm) double  
glazing
3. 1/8 (3mm) Thick galvanized steel  
T-profile with welded steel plate and  
threaded steel pins supporting 3/8 +  
3/8" (10+10mm) transparent yellow  
glass
4. 1/8 (3mm) thick box-shaped  
galvanized steel plate closure and  
fixing
5. 4x4" (100x100mm) steel box profile  
fastening projecting steel frame to  
reinforced concrete edging
6. Cladding in 1/8" (2.5mm) thick steel  
plates, frame supporting cladding in  
HEB 100 steel beams
7. 5/16-1/8-5/16" (8/7/8mm) double  
glazing assembly in frame at slab  
edge
8. 1/16" (2mm) thick shaped sheet finish
9. 4x9 1/8" (100x230mm) steel angle  
profile
10. floor in 4" (100mm) black concrete with  
ground finish, 1 1/4"(30mm) board  
insulation, projecting 7 7/8"(200mm)  
reinforced concrete slab, 4"(100mm)  
board insulation, 2x4" (50x100mm)  
steel C-Profiles fastening  
1/8"(2.5mm) brass grille cladding
11. 1/8-5/8-1/8" (4/16/4mm) wood double  
glazing assembly
12. interior sill in 1/8" (3mm) sheet brass,  
5/8"(16mm) plywood panel, 5/8x1  
5/8"(15x40mm) wood batten, 1  
5/8x2 5/8" (40x65 mm) steel  
C-Profile sandwiching 2 5/8"(65mm)  
board insulation, 1/8" (3mm) sheet  
steel installation space
13. Canopy roof in 1/8"(3mm) sheet  
brass, 3 1/8"(80mm) max H board  
insulation on 17 degree slope, 5/8"  
(16mm) gypsum board, 1 5/8x4 1/2  
(40x115mm) steel C-Profile  
sandwiching 4 1/2"(115mm) board  
insulation, 1/8"(3mm) sheet steel,  
false ceiling in removable 1/8"(3mm)  
brass panels
14. 1/8" (3mm) Sheet brass, 5/8"(16mm)  
gypsum board,  
1 3/8x2"(35x50mm) wood, 2  
3/8"(60mm) board insulation, 2  
3/4x7 1/8" (70x180mm) steel  
C-Beam, gutter, IPE 120 steel beam
15. Steel entrance door with  
1/16-5/8-1/16" (5/15/5mm) double  
glazing
16. Exterior walkway in  
2x108 1/4"(50x2750mm) wood,  
9 3/8x3 1/8"(250x80mm) wood  
joists with pair of 3/8x4  
3/4"(10x120mm) bolted steel plates  
securing beams to reinforced  
concrete foundation, gravel bedding
17. 1 1/2" (40mm) Galvanized steel grill,  
4"(100mm) concrete, 2"(50mm)  
board insulation,  
11 7/8"(300mm) reinforced concrete  
slab
18. 6 1/4x6 1/4"(160x160mm) steel angle  
profile
19. 1 5/8"(40mm) Thick door with  
3 1/2x2 5/8"(90x65mm) steel frame  
with double glazing
20. Projecting walkway roof formed by  
4x1"(100x25mm) untreated cedar  
wood, (30x30mm) wood beams,  
1/8"(3mm) sheet steel, 5/16"(8mm)  
wood panel,  
5 1/2"(140mm) max H wood beam, 1  
3/8x2"(35x50mm) wood rafters, false  
ceiling in 1" (25mm) cedar wood  
panels
21. Gutter
22. External wall in 4x1"(100x25mm)  
untreated cedar wood, frame of  
4"(100mm) wood, 4x1"(100x25mm)  
untreated cedar wood
23. 4x1"(100x25mm) untreated cedar  
wood frame of 1 1/4x1 1/4"  
(30x30mm) wood, 7 7/8" (200mm)  
reinforced concrete slab





1. 入口 Entry
2. 大厅 Lobby
3. 前台 Reception
4. 咖啡厅 Cafe
5. 厨房 Kitchen
6. 礼堂 Auditorium
7. 办公区 Office
8. 展览区 Exhibition





Knut Hamsun, Norway's most inventive twentieth-century writer and recipient of the Nobel Prize in Literature, fabricated new forms of expression in his first novel *Hunger*. This center dedicated to Hamsun is located above the Arctic Circle by the village of Presteid of Hamarøy, near the farm where the writer grew up. The 2,508 m<sup>2</sup> center includes exhibition areas, a library and reading room, a café, and an auditorium for museum and community use. Influenced by Hamsun's explorations of the intricacies of the human mind, the building is conceived as an archetypal and intensified compression of spirit in space and light, and as a Hamsun character in architectonic terms. Inspired by passages of Hamsun's texts, there is an "empty violin case" deck, while a viewing balcony is like the "girl with sleeves rolled up polishing yellow panes".

The concept for the museum, "Building as a Body: Battleground of Invisible Forces," is realized from inside and out. The wood exterior is punctuated by hidden impulses piercing through the surface. The spine of the building body, constructed from perforated brass, is the central elevator. The board form concrete structure with stained white interiors is illuminated by diagonal rays of sunlight calculated to ricochet through the section on certain days of the year. The tarred black wood exterior skin alludes to Norwegian Medieval wooden stave churches and on the roof garden, long chutes of bamboo refer to traditional Norwegian sod roofs.

The auditorium is connected to the main building via a passageway accessed through the lower lobby, which takes advantage of the natural topography, allowing for natural light along the circulation route.

博物馆地处山水之间，风光无限

The museum is located between mountains and waters



