

*Modern
Classicism*
样板间III:新贵古典

深圳市创扬文化传播有限公司 策划 徐宾宾 主编



华中科技大学出版社

<http://www.hustp.com>

图书在版编目(CIP)数据

样板间III：新贵古典 / 徐宾宾主编. — 武汉：华中科技大学出版社, 2011.12
ISBN 978-7-5609-7615-0

I. ①样… II. ①徐… III. ①住宅—室内装饰设计—图集 IV. ①TU241-64

中国版本图书馆CIP数据核字(2011)第271149号

样板间III：新贵古典

徐宾宾 主编

出版发行：华中科技大学出版社（中国·武汉）

地 址：武汉市洪山区珞喻路1037号（邮编：430074）

出 版 人：阮海洪

责任编辑：赵慧蕊

责任校对：王晓甲

责任监印：秦 英

装帧设计：彭种玉

印 刷：利丰雅高印刷（深圳）有限公司

开 本：990mm×1270mm 1/16

印 张：19

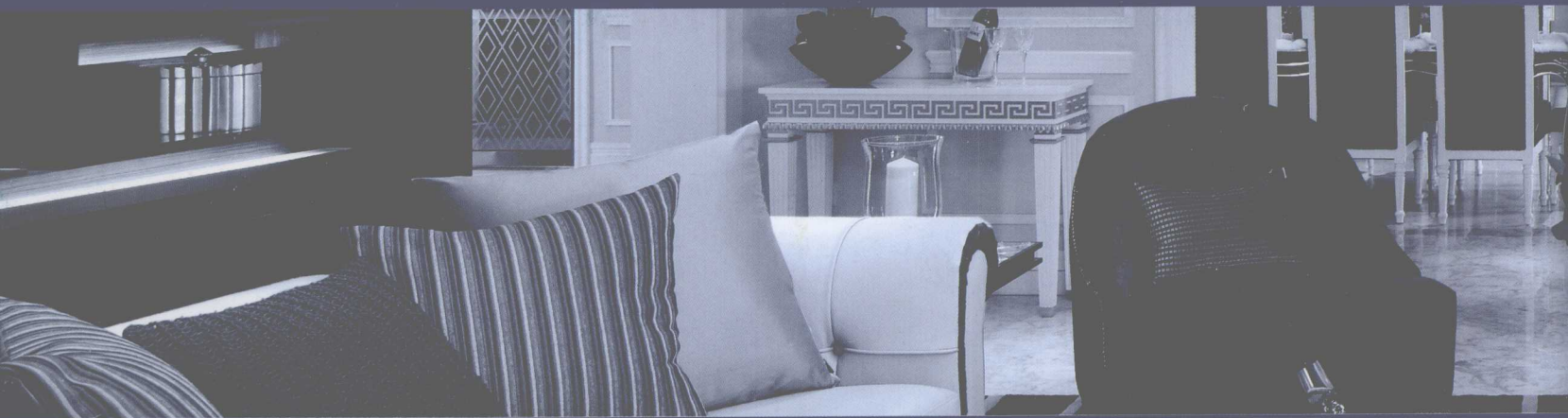
字 数：152千字

版 次：2012年2月第1版 第1次印刷

定 价：278.00元 (USD 55.99)



本书若有印装质量问题，请向出版社营销中心调换
全国免费服务热线：400-6679-118 竭诚为您服务
版权所有 侵权必究



华润新鸿基太湖国际社区
Sun Hung Kai Taihu International Community

006



084 远雄米兰苑样板房
Palazzo Milano Sample House

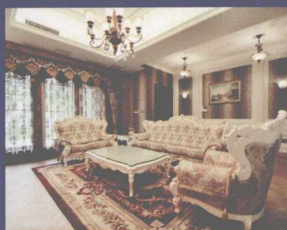
长沙堤亚纳湾样板房
Changsha Triana Bay Show Flat

010

088 广州秀山一品君庭样板房一
The Model House I of Guangzhou Xiushan Yipin Court

金地长青湾样板房H1
Jindi Changqingwan Model House H1

016



092 广州秀山一品君庭样板房二
The Model House II of Guangzhou Xiushan Yipin Court

金丰华庭
Jin Feng Hua Ting

022

096 熙龙湾样板房二
Xilong Bay Show Flat Two

金港广场
Jin Gang Plaza

030



104 熙龙湾样板房三
Xilong Bay Show Flat Three

万科金色沁园A户型
Apartment A of Vanke Golden Garden

036

110 熙龙湾样板房四
Xilong Bay Show Flat Four

万科金色沁园F户型
Apartment F of Vanke Golden Garden

042



120 托斯卡纳海岸
Tuscan Coast

福清融侨城
Fuqing Rongqiao Town

050

128 新世纪花苑
New Century Garden

华盛新外滩
Huasheng New Bund

058



134 新江湾一号样板房
New Jiangwan Show Flat No.1

汉飞向上城精装修样板间2-1D户型
Hanfei Xiangshang City Showflat Type 2-1D

064

140 新江湾二号样板房
New Jiangwan Show Flat No.2

远雄艾菲尔
YUANXIONG Eiffel

072



144 新江湾四号样板房
New Jiangwan Show Flat No.4

远雄左岸样板房
Farglory Zoan Model House

076

148 城南天府世家C型样板房
Tianfu Shijia Showflat Type C



低调的奢华 Low-Profile Luxury	156		250	上海世茂滨江花园E户型 Shanghai Shimao Riviera Garden Type E
中悦新天鹅堡 Zhongyue New Swan Castle	164		258	公园道一号 No.1 Park Road
井源居 Jingyuan Residence	174		262	上海巨鹿路 The Shanghai Julu Road
大东城欧式样板房 Da Dong Cheng European Showflat	180		266	武汉御江苑样板房 The Model House in Wuhan Yujiangyuan
灵感 The Inspiration	192		272	海伦皇宫 Helen Palace
绚丽奢华的品位 Taste of Magnificence and Luxury	198		276	御园 LOYAL GARDEN (YU YUAN)
折线摩登的品位 The Modern Taste of Fold Lines	206		282	中山滨江一号公馆样板间 The Showflat Interior Design of The Private Peninsula, Zhongshan
中源名都11号楼 The Building 11 in Zhongyuan Famous Residence	214		288	中源名苑楼板房一 Zhong Yuan Ming Yuan Show Flat 1
中源名都12号楼 The Building 12 in Zhongyuan Famous Residence	222		296	中源名苑楼板房二 Zhong Yuan Ming Yuan Show Flat 2
中源名都15号楼 The Building 15 in Zhongyuan Famous Residence	232		300	星湖丽景 Xing Hu Li Jing
中源名都16号楼 The Building 16 in Zhongyuan Famous Residence	238			
上海世茂滨江花园D户型 Shanghai Shimao Riviera Garden Type D	244			

Modern Classicism

样板间III:新贵古典

深圳市创扬文化传播有限公司 策划

徐宾宾 主编



华中科技大学出版社

<http://www.hustp.com>

此为试读, 需要完整PDF请访问: www.ertongbook.com

PREFACE 序言

MODERN CLASSICISM III

Neoclassicism is the combination of classical and modern. Its essence comes from the classicalism, but not in the style of the ancients, also not restore ancient ways, what it pursues a quite similarity with its own style. She gets out of the weakness and retains the good ones, for example, retaining the style of Louis XIV Curve and wiping off the complex decoration on the Curve; keeping some details but not the heap of details; retaining the parquet and engraved gold, but not gold light everywhere. This design of retaining material, color, and style and abandoning complex lines, decoration, and texture is no loss of character and still can be felt a trace of traditional history, rich culture and heritage, which is the neo-classical style---the perfect eclectic.

The essence of neo-classical is elegant heritage, open stance, and distinguished fine.

The characteristics of neo-classical are the lines with Lady Sense, gold, silver and dark color, and low-key luxury details.

The benefits of neo-classical are the followings: the tone can be deep and light. When using gold and dark red becomes deep, the use of white becomes light. With Rococo accessories and the optimization of Baroque, it looks distinguished and graceful. Coupled with modern leather goods or indirect bedside lamps, it is extraordinary elegant.

The interior design style of neo-classical is an improvement over the classical style. It emphasizes the style, with a simplified way, modern materials and processing technology to pursue the broad contours and features of the traditional style, and focus on decorative effect, with furnishings to enhance the characteristics of historical context. European culture with its rich artistic heritage, open and innovative design ideas and noble appearance has always been well received by everyone. Neo-classical style gives the impression of meticulousness from simple to complex, from the whole to the part, from exquisitely carved pieces to the parquet and engraved gold. On the one hand, it retains the general style of the material and color and can be felt a trace of traditional history, rich culture and heritage. On the other hand, it abandons too complex texture and decoration and simplifies lines.

Neo-classical expression can be beautiful, elegant, refined and generous. With the use of women's unique perspectives and the bold mix of material, generous and open momentum shows up following the elegant color and vocabulary. The neo-classical image in the space naturally and exclusively shows the occupants' attitude towards life and the pursuit of the taste.

新古典主义是古典与现代的结合物，它的精华来自古典主义，但不是仿古，更不是复古，而是追求神似。她去芜存青，保留了路易十四风格的线条，去除了线条上过多的繁杂装饰；保留了细节，却又没有过多的细节堆杂以至于失去重点；保留了镶花刻金，却又不是满眼金晃晃的让人眼拙。这种保留了材质、色彩、风格，摒弃了过于复杂的线条、装饰、肌理，却没有丢失性格，仍然可以强烈感受到传统的历史痕迹和浑厚的文化底蕴，便是完美折中主义的新古典主义风格。

新古典主义的精华——高雅的底蕴、开放的姿态、尊贵的精细。新古典主义的特点——Lady感的线条、金银暗调的色彩、低调奢华的细节。

新古典主义的好处——可浓可淡，色泽上多用金色和暗红就浓，稍加白色柔和则明亮而淡；加以洛可可的配饰或巴洛克的优化，便尊贵雍容；配上现代化的皮制品，或间接的床头灯，便优雅非凡。

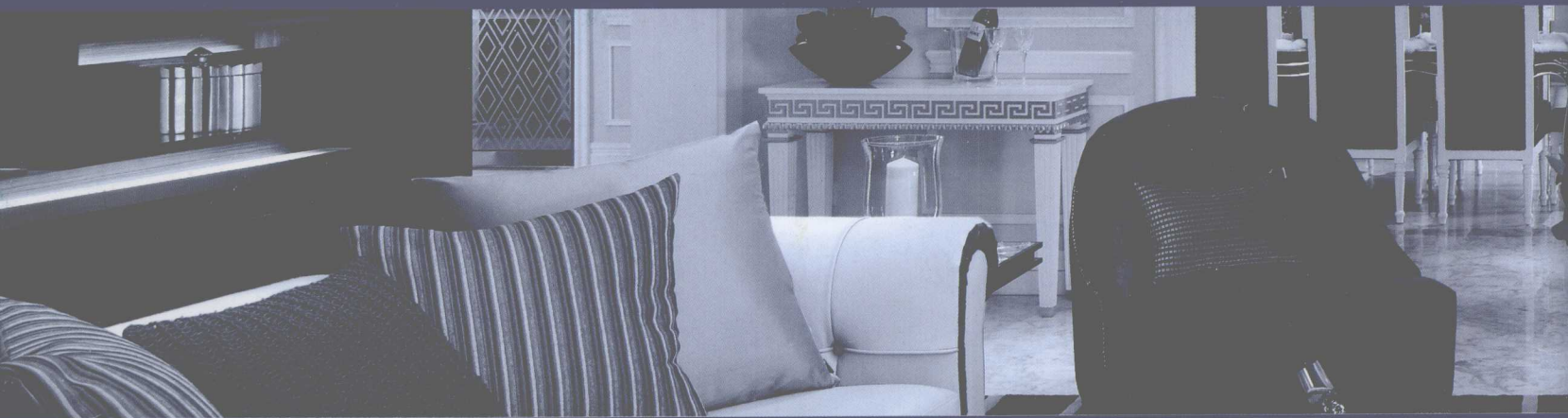
新古典主义的室内设计风格其实是经过改良的古典主义风格。它讲求风格，用简化的手法、现代的材料和加工技术去追求传统样式的大致轮廓特点；注重装饰效果，用室内陈设品来增强历史文脉特色。欧洲文化丰富的艺术底蕴，开放、创新的设计思想及其尊贵的姿容，一直以来颇受众人喜爱与追求。新古典主义风格从简单到繁杂、从整体到局部，精雕细琢，镶花刻金都给人一丝不苟的印象。一方面保留了材质、色彩的大致风格，仍然可以很强烈地感受传统的历史痕迹与浑厚的文化底蕴，同时又摒弃了过于复杂的肌理和装饰，简化了线条。

新古典的表情，可以华丽、可以优雅、可以精致丰富、可以细腻悠闲；运用女性特有的观点及素材上的大胆搭配，大方开阔的气势，循着优雅的设色及语汇，不着痕迹地显露出来，空间里的新古典意象，自然而绝对、专属而唯一地呈现出居住者的生活态度及品味的追求。

刘威

武汉刘威室内设计有限公司





华润新鸿基太湖国际社区
Sun Hung Kai Taihu International Community

006



084 远雄米兰苑样板房
Palazzo Milano Sample House

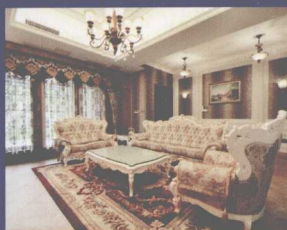
长沙堤亚纳湾样板房
Changsha Triana Bay Show Flat

010

088 广州秀山一品君庭样板房一
The Model House I of Guangzhou Xiushan Yipin Court

金地长青湾样板房H1
Jindi Changqingwan Model House H1

016



092 广州秀山一品君庭样板房二
The Model House II of Guangzhou Xiushan Yipin Court

金丰华庭
Jin Feng Hua Ting

022

096 熙龙湾样板房二
Xilong Bay Show Flat Two

金港广场
Jin Gang Plaza

030



104 熙龙湾样板房三
Xilong Bay Show Flat Three

万科金色沁园A户型
Apartment A of Vanke Golden Garden

036

110 熙龙湾样板房四
Xilong Bay Show Flat Four

万科金色沁园F户型
Apartment F of Vanke Golden Garden

042



120 托斯卡纳海岸
Tuscan Coast

福清融侨城
Fuqing Rongqiao Town

050

128 新世纪花苑
New Century Garden

华盛新外滩
Huasheng New Bund

058



134 新江湾一号样板房
New Jiangwan Show Flat No.1

汉飞向上城精装修样板间2-1D户型
Hanfei Xiangshang City Showflat Type 2-1D

064

140 新江湾二号样板房
New Jiangwan Show Flat No.2

远雄艾菲尔
YUANXIONG Eiffel

072



144 新江湾四号样板房
New Jiangwan Show Flat No.4

远雄左岸样板房
Farglory Zoan Model House

076

148 城南天府世家C型样板房
Tianfu Shijia Showflat Type C



低调的奢华 Low-Profile Luxury	156		250	上海世茂滨江花园E户型 Shanghai Shimao Riviera Garden Type E
中悦新天鹅堡 Zhongyue New Swan Castle	164		258	公园道一号 No.1 Park Road
井源居 Jingyuan Residence	174		262	上海巨鹿路 The Shanghai Julu Road
大东城欧式样板房 Da Dong Cheng European Showflat	180		266	武汉御江苑样板房 The Model House in Wuhan Yujiangyuan
灵感 The Inspiration	192		272	海伦皇宫 Helen Palace
绚丽奢华的品位 Taste of Magnificence and Luxury	198		276	御园 LOYAL GARDEN (YU YUAN)
折线摩登的品位 The Modern Taste of Fold Lines	206		282	中山滨江一号公馆样板间 The Showflat Interior Design of The Private Peninsula, Zhongshan
中源名都11号楼 The Building 11 in Zhongyuan Famous Residence	214		288	中源名苑楼板房一 Zhong Yuan Ming Yuan Show Flat 1
中源名都12号楼 The Building 12 in Zhongyuan Famous Residence	222		296	中源名苑楼板房二 Zhong Yuan Ming Yuan Show Flat 2
中源名都15号楼 The Building 15 in Zhongyuan Famous Residence	232		300	星湖丽景 Xing Hu Li Jing
中源名都16号楼 The Building 16 in Zhongyuan Famous Residence	238			
上海世茂滨江花园D户型 Shanghai Shimao Riviera Garden Type D	244			

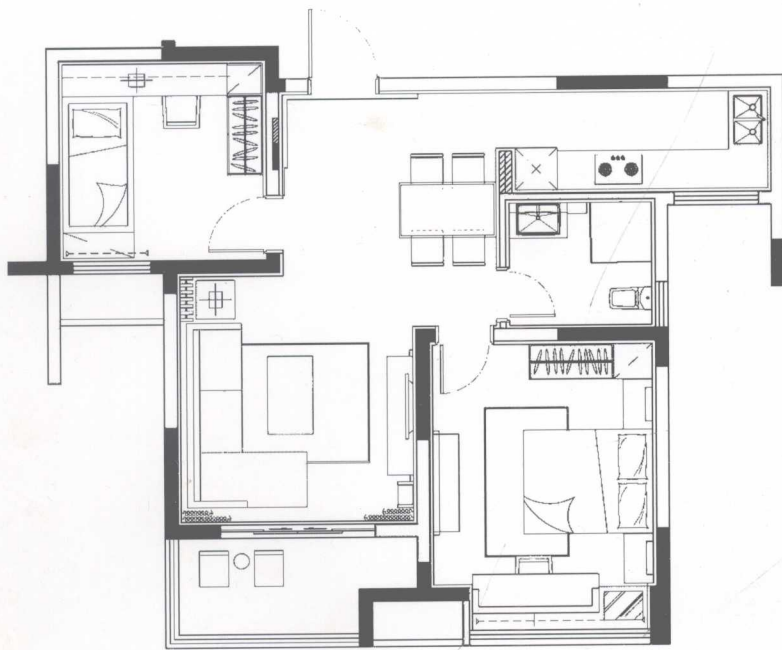


华润新鸿基太湖国际社区

CRC Sun Hung Kai Taihu International Community

设计师：刘伟婷 设计单位：刘伟婷设计师有限公司 项目地点：江苏无锡 建筑面积：76 平方米





平面布置图

We extract inspiration from nature. We composite patterns with natural things like flowers, leaves, etc. Besides, we use spatial composition to interpret different collocations of forms and colors, creating a diverse design with rich original and natural charm. Glittering furnishings, three-dimensional wall and textured materials enhance the sense of depth and fascinating atmosphere, which exudes natural and simple charm everywhere in the space.

从自然界中撷取灵感，以大自然构图，如花朵、树叶等。运用空间构图设计，演绎不同形态与颜色的搭配，创造出多变且富有原始与自然魅力的设计。闪烁的饰品、墙身立体形态和具质感的物料，增添层次感及迷人形态，处处绽放出自然简约的韵味。

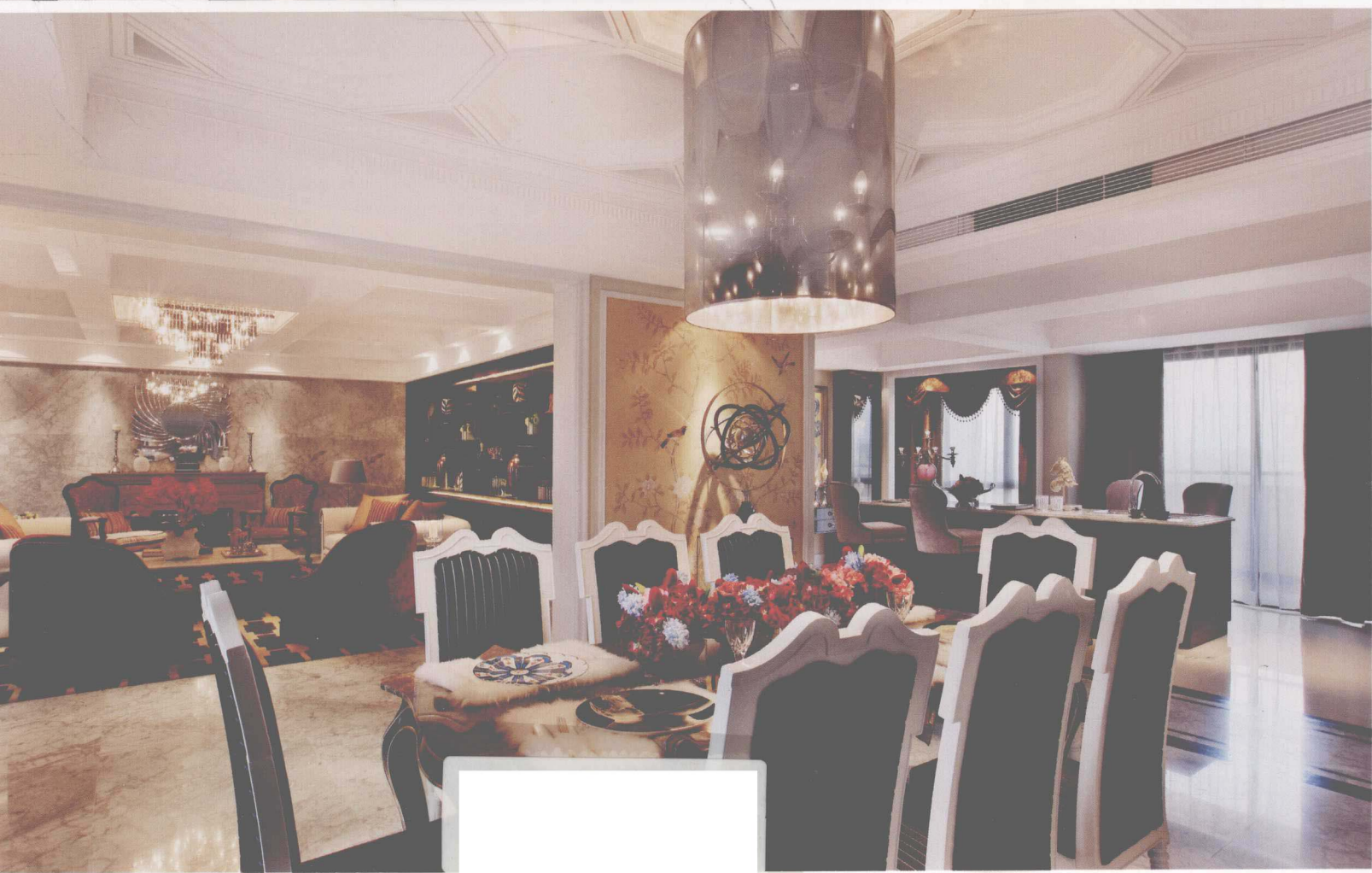




长沙堤亚纳湾样板房

Changsha Triana Bay Show Flat

设计师：戴勇 设计单位：Eric Tai Design Co., LTD戴勇室内设计师事务所 软装设计：戴勇室内设计师事务所&深圳市卡萨艺术品有限公司 项目地点：湖南长沙 建筑面积：300 平方米 主要材料：中花白云石、黑白根云石、墙纸、黑檀木、茶镜、皮革 摄影师：江国增





A river has divided a city into two halves. The left bank is unrestrained, while the right bank is dignified. If you are determined to turn right at the left bank, you could imagine yourself newly chosen by the phantom of the Louvre, and you are looking in the Champs Elysees for the ring that has been missing for centuries. You can never hold or carry away the beauty of Paris. What you can do is to simplify it, take it as a huge wardrobe and pick up the favorite one. Then you could just stand at the left bank and turn right.

When Paris is mentioned, some will think of Louvre pyramid, or the nineteenth-century literary saloon. However, what comes to my mind is the short and fine French chansons, which we always encounter in the cafes at the left bank of Seine. Sitting by the side of the quietly flowing Seine, one will stay satisfied in an entire afternoon with the company of a book and a cup of coffee. The father of music Bach once said: "A cup of coffee is worth a thousand kisses." Frenchmen's elegance and romance are intrinsic nature. In a French neo-classical space, we try to give full play to the French elegance and romance.

In this residence that has combined two unites into one, the designer has created an elegant and noble luxury living space. Black and white marble, milk-white wallpaper and white classic lines are together telling about an elegant and classic space. Flowers everywhere are so colorful that a glance of them can make viewers' heart beat faster. Sitting next to the bar in the living room, one can start his beautiful day with a cup of fragrant coffee. In the cabinet of the study room is the house owner's collection of red wine. On the desk are an open painting album and a half smoked cigar. Life of leisure is fascinating. From the background music comes Lisa Ono's "Dans Mon Ile" which brings us back to the times of classical chansons. It feels like that if we raise the curtains, we can see the sky of Paris full of drizzle and see the always-brilliant left bank of Seine. With a glass of red wine in hand, I look over the city from the window. Plenty of French charm expressed in the lyrical chansons makes us spontaneously think of the ancient buildings on the streets of Paris, Notre Dame's bell and the romantic stories written by Dumas or Hugo.

If there were the end of the world, I would wish for nothing but hand in hand with you in Paris.



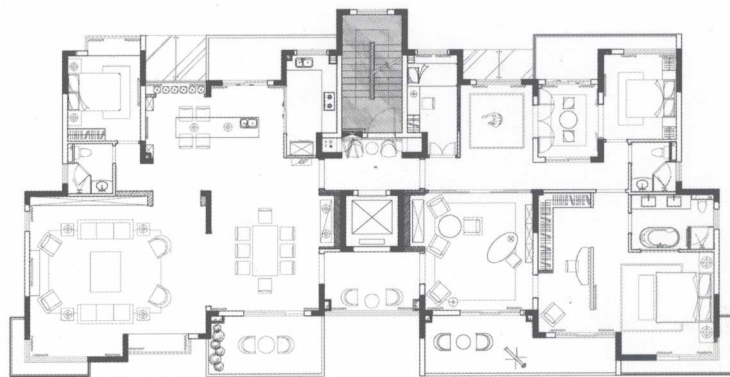


一条河将一座城分了两半，左岸洒脱，右岸凝重。执意要在左岸右转，假想自己是那个被卢浮影魅选中的新人，在香榭丽舍大道寻找那枚遗失了几个世纪的戒指。巴黎的美，载也载不动，搬也搬不完。只能化繁为简，把它当作是一只巨大的衣橱，从中挑选一件最中意的。站在左岸，然后右转。

提到巴黎，有人会想到卢浮宫的金字塔，会想到十九世纪的文艺沙龙，而我首先想到的，则是那一首首短小而精致的法国香颂，在塞纳河左岸的咖啡馆里，常常与我们不期而遇。坐在静静流淌的塞纳河边，一本书，一杯咖啡，就可以陪伴一个人度过整整一个下午。音乐之父巴赫曾说：“一杯咖啡胜过一千个吻。”法国人的优雅与浪漫是透进骨子里的。法式新古典的空间，我们尝试着把这种法式的优雅浪漫做进骨子里。

在这套由两个单位合二为一的住宅里，设计师营造出一种优雅尊贵的奢享生活空间。黑白相间的云石、乳白色的壁纸和白色的古典线脚，共同诉说一份优雅和经典。随处可见的花艺，色彩鲜艳得让心萌动。坐在客厅的吧台旁，美好的一天，从一杯香浓的咖啡开始。书房的柜子里有主人珍藏的红酒，书台上一本摊开的画册，一支抽了一半的雪茄。悠闲的生活，令人神往。背景音乐里传来小野丽莎的《左岸香颂》，把我们重新带回古典香颂的时代。好像撩开窗帘就可以望见飘满细雨的巴黎天空，望见塞纳河畔永远灿烂的左岸。捧着一杯红酒，凭窗眺望，在抒情的香颂歌声里，浓浓的法国情调会让我们不由自主地想起巴黎街头古老的建筑，想起圣母院的钟声，以及那些发生在大仲马或雨果笔下的浪漫故事。

如果有世界末日，我只想在巴黎和你手牵手。



平面布置图