

An aerial photograph of a resort pool and terrace. The pool is a large, irregularly shaped, light blue structure with a concrete border, situated on a hillside. To the left of the pool is a terrace with several tables and chairs, and a set of stairs leading down. The background shows a blue ocean with some rocks. The pool is surrounded by lush greenery and trees. To the right of the pool, there are several lounge chairs and umbrellas, some of which are orange. The overall scene is a tropical resort setting.

# RESORT

## DESIGN

# 度假村

高迪国际出版有限公司 编

中国林业出版社  
China Forestry Publishing House



# RESORT

## DESIGN

度假村

高迪国际出版有限公司 编  
陶立军 王姗姗 许晓书 译



中国林业出版社  
China Forestry Publishing House

## 图书在版编目 ( C I P ) 数据

---

度假村: 汉英对照 / 高迪国际出版有限公司编; 陶立军, 王姗姗, 许晓书译. -- 北京: 中国林业出版社, 2012.10

ISBN 978-7-5038-6742-2

I. ①度… II. ①高… ②陶… ③王… ④许… III. ①旅游度假村-建筑设计-案例-汉、英 IV. ①TU247

中国版本图书馆CIP数据核字(2012)第218041号

---

中国林业出版社·建筑与家居出版中心

责任编辑: 纪 亮 李丝丝

在线对话: 1140437118 ( QQ )

---

出版: 中国林业出版社 ( 100009 北京西城区德内大街刘海胡同 7 号 )

网址: [lycb.forestry.gov.cn](http://lycb.forestry.gov.cn)

邮箱: [cfphz@public.bta.net.cn](mailto:cfphz@public.bta.net.cn)

电话: ( 010 ) 8322 5283

发行: 新华书店

印刷: 北京利丰雅高长城印刷有限公司

版次: 2012年10月第1版

印次: 2012年10月第1次

开本: 240mm\*320mm 1/16

印张: 22.00

字数: 250千字

定价: 350.00元 ( USD 60.00 )

---

法律顾问: 北京华泰律师事务所 王海东律师 邮箱: [prewang@163.com](mailto:prewang@163.com)



# CONTENTS

## 目录

### ELOUNDA BEACH HOTEL & VILLAS

伊罗达海滩酒店

8

### HOTEL DE LA PAIX CHA AM BEACH

差安德拉帕斯酒店

106

### MANDARIN ORIENTAL RIVIERA MAYA, MEXICO

墨西哥里维埃拉玛雅文华东方酒店

20

### AKATSUKI RESORT

黎明度假村

116

### CAPELLA SINGAPORE RESORT

新加坡嘉佩乐酒店

34

### CASA DE LA FLORA

凯撒德拉花园酒店

130

### LE MERIDIEN KOH SAMUI RESORT & SPA

苏梅岛艾美水疗度假酒店

48

### MONTIS, PAI, MAE HONG SON

夜丰颂蒙提斯度假村

140

### THE KUUM HOTEL SPA & RESIDENCES

库姆水疗度假村

60

### MONTAGE RESORT AND SPA AT DEER VALLEY

鹿谷蒙太奇水疗度假村

150

### RAWI WARIN RESORT & SPA

甲米生态水疗度假村

70

### FAIRMONT ZIMBALI RESORT

费尔蒙津巴里度假村

160

### MAKENNA RESORT

马肯纳度假村

84

### AMANJIWO RESORT

阿曼佳沃度假酒店

176

### ANANTARA KIHAVAH VILLAS

克哈瓦岛安纳塔拉度假村

92

### SAFFIRE RESORT

萨菲尔度假酒店

186



**ONE & ONLY, THE PALM,  
DUBAI**

迪拜棕榈天下无双酒店

198

**SIX SENSES LAAMU**

第六感拉姆度假酒店

292

**AYANA RESORT AND  
SPA**

巴厘阿雅那水疗度假村

212

**JADE MOUNTAIN  
ESTATES**

玉山度假村

300

**CONSTANCE EPHELIA  
RESORT**

康斯坦茨·艾菲莉亚度假村

220

**O BEACH RESORT**

完美沙滩度假酒店

306

**CENTARA GRAND  
BEACH RESORT,  
PHUKET**

普吉岛中心海滩度假村

232

**WESTIN SOHNA RESORT  
& SPA**

威斯汀索赫纳水疗度假酒店

316

**CAP ROCAT**

卡普·劳卡特度假村

240

**PIMALAI RESORT & SPA**

披玛雷水疗度假村

324

**CONSTANCE HALAVELI  
RESORT**

康斯坦茨·哈拉薇丽度假村

254

**PARESA RESORT**

普吉岛帕瑞莎度假村

338

**CASTWAYS RESORT**

天涯海角度假村

266

**APPENDIX**

附录

348

**CONSTANCE MOOFUSHI  
RESORT**

康斯坦斯幕芙岛度假村

280

# RESORT

## DESIGN

度假村

高迪国际出版有限公司 编  
陶立军 王姗姗 许晓书 译

中国林业出版社  
China Forestry Publishing House



## 图书在版编目 ( C I P ) 数据

---

度假村: 汉英对照 / 高迪国际出版有限公司编; 陶立军, 王姗姗, 许晓书译. -- 北京: 中国林业出版社, 2012.10

ISBN 978-7-5038-6742-2

I. ①度… II. ①高… ②陶… ③王… ④许… III. ①旅游度假村-建筑设计-案例-汉、英 IV. ①TU247

中国版本图书馆CIP数据核字(2012)第218041号

---

中国林业出版社·建筑与家居出版中心

责任编辑: 纪 亮 李丝丝

在线对话: 1140437118 ( QQ )

---

出版: 中国林业出版社 ( 100009 北京西城区德内大街刘海胡同 7 号 )

网址: [lycb.forestry.gov.cn](http://lycb.forestry.gov.cn)

邮箱: [cfphz@public.bta.net.cn](mailto:cfphz@public.bta.net.cn)

电话: ( 010 ) 8322 5283

发行: 新华书店

印刷: 北京利丰雅高长城印刷有限公司

版次: 2012年10月第1版

印次: 2012年10月第1次

开本: 240mm\*320mm 1/16

印张: 22.00

字数: 250千字

定价: 350.00元 ( USD 60.00 )

---

法律顾问: 北京华泰律师事务所 王海东律师 邮箱: [prewang@163.com](mailto:prewang@163.com)







# PREFACE

## 序言

A retreat, a sanctuary, a hide-away, a holiday destination.....a Hotel Resort! A hotel resort, in contrast to the regular hotel establishment, provides accommodation for longer periods of time and offers unique encounters. Resorts offer experiences and entertainment activities based upon local attractions which lure people with the prospects of engaging in the exceptional and the extraordinary. A resort promises an escape into a world of excitement, pleasure and fantasy where guests are able to relax and unwind.

This retreat can be enjoyed by the whole family as children can be cared for and entertained in a safe and stimulating environment. An important aspect of resort design is to understand the guest profile.

**The key resort design elements include:**

- **Location.**
- **Fragmented planning, contextualized within the local surroundings.**
- **A distinctive architectural theme.**
- **Combination of facilities which make a variety of sporting opportunities within planned zones possible.**
- **Building arrangements which aid the relaxation and rejuvenation of the guest.**
- **Numerous food and beverage facilities offering a variety of eating and drinking experiences with a focus on local cuisine and flavours.**
- **Distinct child friendly facilities.**
- **Centrally located, oversized swimming pools or theme parks.**
- **Wellness and fitness centre facilities**
- **Conference and meeting facilities**

The most difficult stage of a resort project is usually grasping an accurate understanding of the abstract concept. The communication between the designer and the client is of the utmost importance, to define the project goals and the scope of the intended project.

Once the feasibility study is carried out, the clarity of the project direction, its magnitude and target audience is defined prior to the design process proceeding. Co-ordination and interaction with the selected resort operator representatives is exceptionally important, in order to understand and develop the space planning and its relationships between functions.

Resorts layouts are planned with a predominant focus on the contextual landscape and also the proximity to local attractions. Accessibility to the beach for a coastal resort will be of the utmost importance whilst skiing facilities will define that of the mountain resort. The opportunity to view exotic game will be the focus of a bush lodge. All these unique and striking vistas need to be fully exploited and utilized in the design.

The architectural sensitivity to the environment and the sustainable interaction between the ecology and the site is of the utmost importance, whilst the use of local materials plays a very important role in giving the resort its unique aesthetic.

The public areas need to be spacious and easily accessible and should sensitively relate to the surroundings thus creating a seamless fusion between interior and exterior spaces. The guest rooms must be comfortable and relaxing with an emphasis on views and rejuvenation.

The architecture and interior design should draw their inspiration from local styles, thus promoting the resort's true interpretation of indigenous beauty and traditions. This will serve to guarantee the resort's uniqueness and exceptional distinction.



隐居之所，避世之处，远离尘嚣，度假之地……度假村！与传统意义上的酒店不同，度假村向顾客提供较长期的住宿服务和独特的体验。度假村所提供的体验和娱乐活动，均以当地名胜为依托，吸引着具有猎奇心理的游客。度假村为顾客提供了一个充满刺激、欢乐和奇幻体验的世外桃源，使他们可以尽情放松和享受。

这样的度假场所可供举家享受，孩子们可以在一个安全、奇妙的环境中得到照看和娱乐。设计度假村的一个重要方面就是理解谁才是它的最终用户。

**度假村设计的关键包括：**

1. 选址
2. 区域设计，要与周围的环境搭配和谐
3. 独特的建筑主题
4. 硬件设施的综合运用，使之在建筑空间内提供尽可能多样化的运动方式
5. 有助于客人放松和身心修复的建筑安排
6. 以当地菜肴和风味为核心的多样化餐饮设施，并可向客人提供多样化的餐饮体验
7. 适合儿童使用的设施
8. 位于度假村中心地带的大型泳池或主题公园
9. 健身中心
10. 会议设施

设计度假村项目最困难的一个步骤就是准确地理解抽象概念，而设计师与客户之间的沟通对确定项目目标和项目策划的范围尤为重要。

项目的可行性报告被批准之后，在真正开始设计之前，还需要明确项目设计的大体方向、度假村的档次和目标消费者群体。与度假村经营者代表的合作与沟通对理解和开展空间设计和内部功能设计非常重要。

度假村的外观设计以周围风景为先决条件，同时还要考虑到与当地名胜的融合。对于海边度假村来说，能通向海滩是非常重要的，而滑雪设施则是山顶度假村的标志。观赏冒险游戏则应是丛林度假村的招牌。在设计过程中，所有的这些独特而出众的特色都应充分利用。

具备对环境、生态与度假村之间可持续互动的建筑敏感度是非常重要的。而使用当地原材料会赋予度假村独一无二的特别之美。

宽敞、便利的公共区域应该与周围的环境相搭配，营造出内部与外部之间无缝接续的感觉。以景观和休养为重心的客房则应该是舒适而令人放松的。

度假村的建筑与内部设计应该从当地建筑风格中寻求灵感，从而使度假村成为当地淳美和传统的诠释，并赋予度假村独特的韵味。



# CONTENTS

## 目录

### ELOUNDA BEACH HOTEL & VILLAS

伊罗达海滩酒店

8

### HOTEL DE LA PAIX CHA AM BEACH

差安德拉帕斯酒店

106

### MANDARIN ORIENTAL RIVIERA MAYA, MEXICO

墨西哥里维埃拉玛雅文华东方酒店

20

### AKATSUKI RESORT

黎明度假村

116

### CAPELLA SINGAPORE RESORT

新加坡嘉佩乐酒店

34

### CASA DE LA FLORA

凯撒德拉花园酒店

130

### LE MERIDIEN KOH SAMUI RESORT & SPA

苏梅岛艾美水疗度假酒店

48

### MONTIS, PAI, MAE HONG SON

夜丰颂蒙提斯度假村

140

### THE KUUM HOTEL SPA & RESIDENCES

库姆水疗度假村

60

### MONTAGE RESORT AND SPA AT DEER VALLEY

鹿谷蒙太奇水疗度假村

150

### RAWI WARIN RESORT & SPA

甲米生态水疗度假村

70

### FAIRMONT ZIMBALI RESORT

费尔蒙津巴里度假村

160

### MAKENNA RESORT

马肯纳度假村

84

### AMANJIWO RESORT

阿曼佳沃度假酒店

176

### ANANTARA KIHAVAH VILLAS

克哈瓦岛安纳塔拉度假村

92

### SAFFIRE RESORT

萨菲尔度假酒店

186



**ONE & ONLY, THE PALM,  
DUBAI**

迪拜棕榈天下无双酒店

198

**SIX SENSES LAAMU**

第六感拉姆度假酒店

292

**AYANA RESORT AND  
SPA**

巴厘阿雅那水疗度假村

212

**JADE MOUNTAIN  
ESTATES**

玉山度假村

300

**CONSTANCE EPHELIA  
RESORT**

康斯坦茨·艾菲莉亚度假村

220

**O BEACH RESORT**

完美沙滩度假酒店

306

**CENTARA GRAND  
BEACH RESORT,  
PHUKET**

普吉岛中心海滩度假村

232

**WESTIN SOHNA RESORT  
& SPA**

威斯汀索赫纳水疗度假酒店

316

**CAP ROCAT**

卡普·劳卡特度假村

240

**PIMALAI RESORT & SPA**

披玛雷水疗度假村

324

**CONSTANCE HALAVELI  
RESORT**

康斯坦茨·哈拉薇丽度假村

254

**PARESA RESORT**

普吉岛帕瑞莎度假村

338

**CASTWAYS RESORT**

天涯海角度假村

266

**APPENDIX**

附录

348

**CONSTANCE MOOFUSHI  
RESORT**

康斯坦斯幕芙岛度假村

280



■ ELOUNDA BEACH Hotel & Villas presides on the idyllic north-eastern coast of Crete.

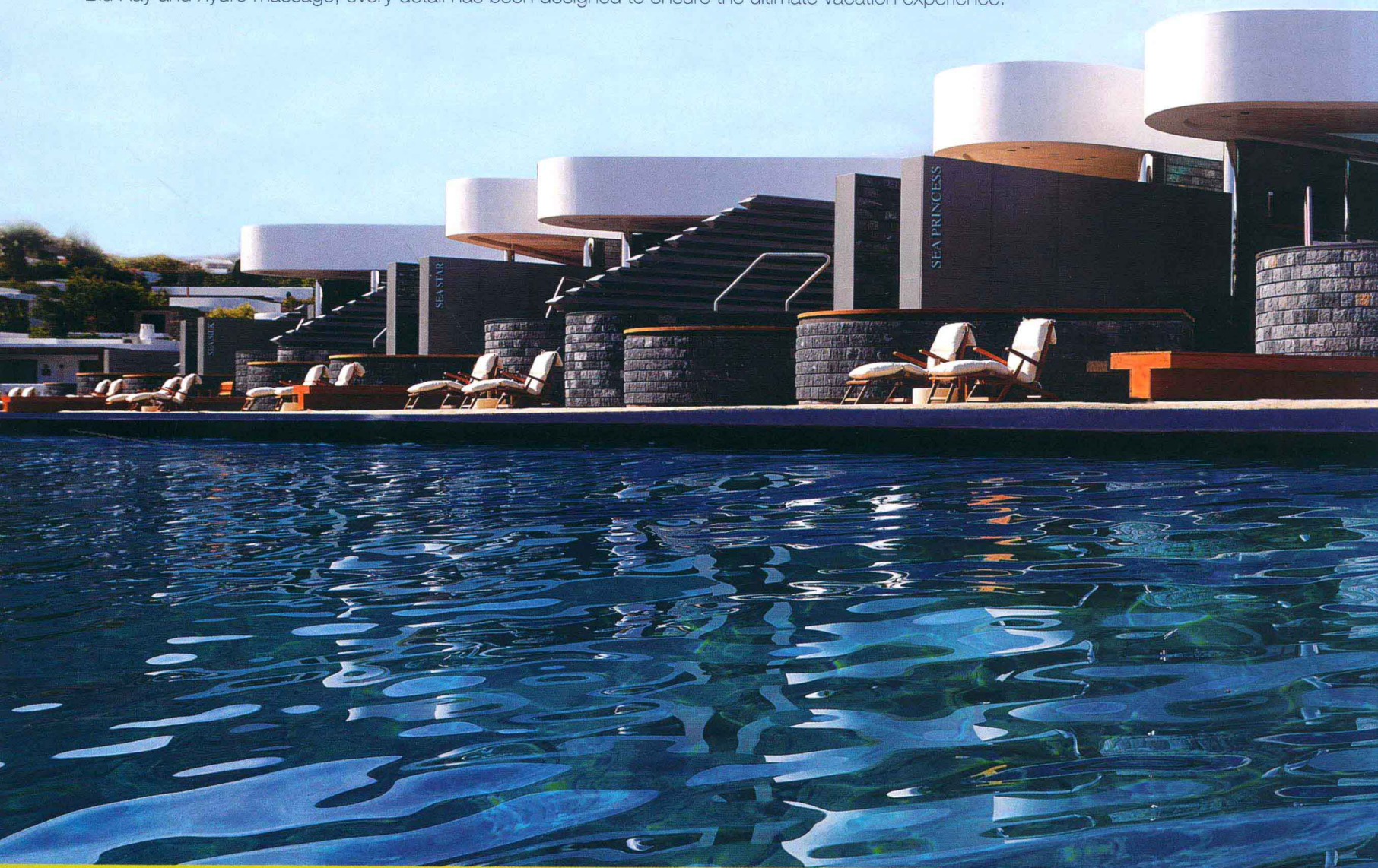
The resort, a staple on Condé Nast Traveler's Gold List and named as the Best Beach Hotel in Europe by GEO SAISON, Germany, continues to gratify visitors with an international standard of hospitality and immersion in the good life of the Greek.

The Villas project is a contemporary intervention on the coast and aims to connect these scales, acting as a link and blurring the boundaries between the land and the sea.

The floating sequence of architecturally refined spaces makes you feel enwrapped by nature. The movable internal partitions and the use of precious teak wood throughout all the spaces from living area, bedroom, bathroom, upper deck with pool, middle deck and lower deck gives the feeling of the beautiful nature to flow into your private world. The villas boast three decking areas, private swimming pool, spacious bedroom and living areas, which may be separate or open plan according to your preference and opulent bathrooms with sunken tub, heated floor and steam bath.

The use of a natural dark grey stone for the exterior wall cladding on the set the new volumes is keeping in harmony with the local environment while the use of natural materials such as wood and leather interiors enwraps the people in a discreetly opulent atmosphere, in balance with the natural surroundings.

From wireless touch panel, sonar screen, the leather wrapped ceilings, teak wood floors to the private movie theatre with Blu Ray and hydro massage, every detail has been designed to ensure the ultimate vacation experience.



# ELOUNDA BEACH HOTEL & VILLAS

## CONTRIBUTOR

Elounda Beach Hotel

## LOCATION

Elounda, Crete, Greece

## PHOTOGRAPHER

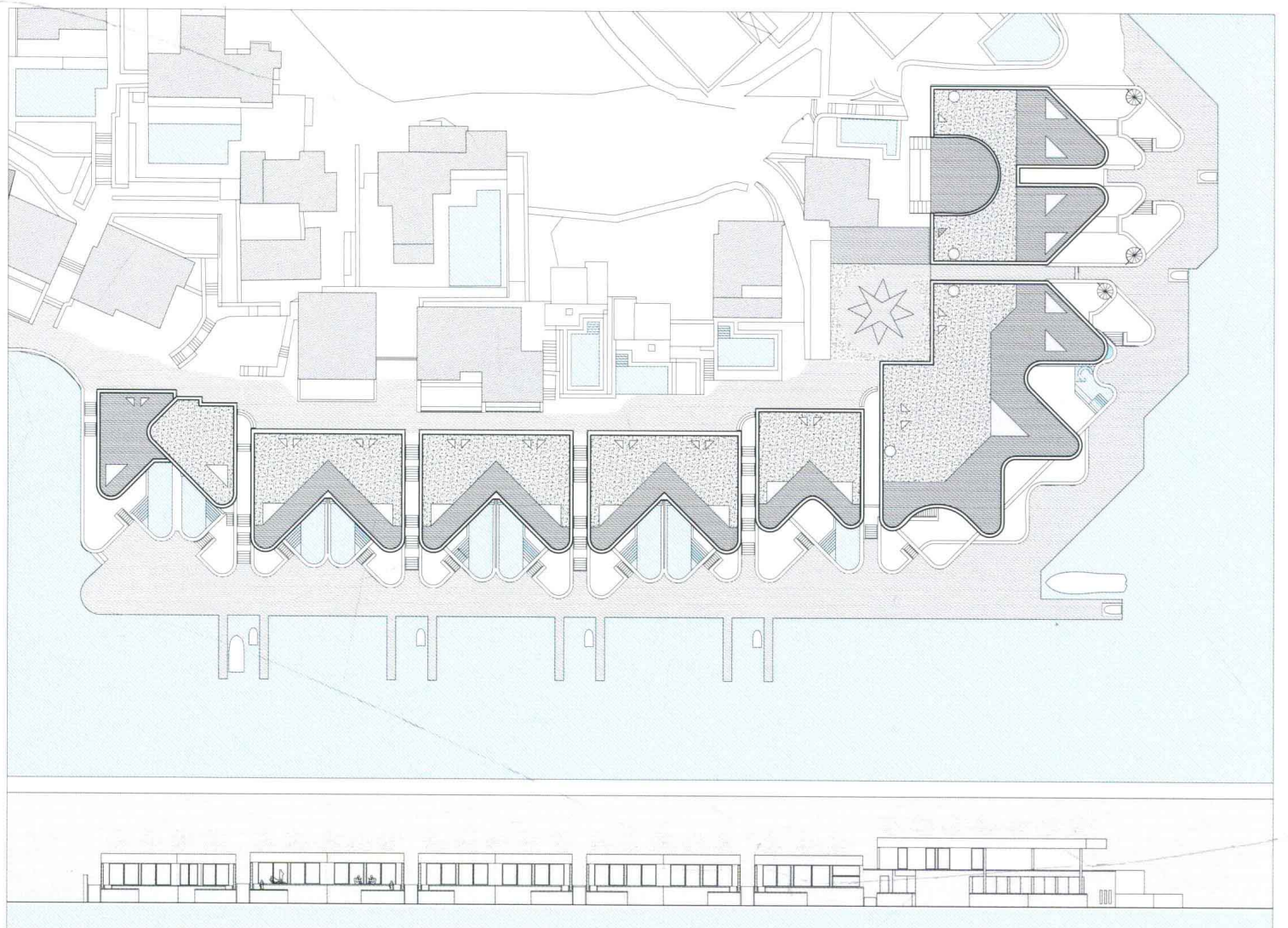
Mr. Enrico Cano

伊罗达海滩酒店









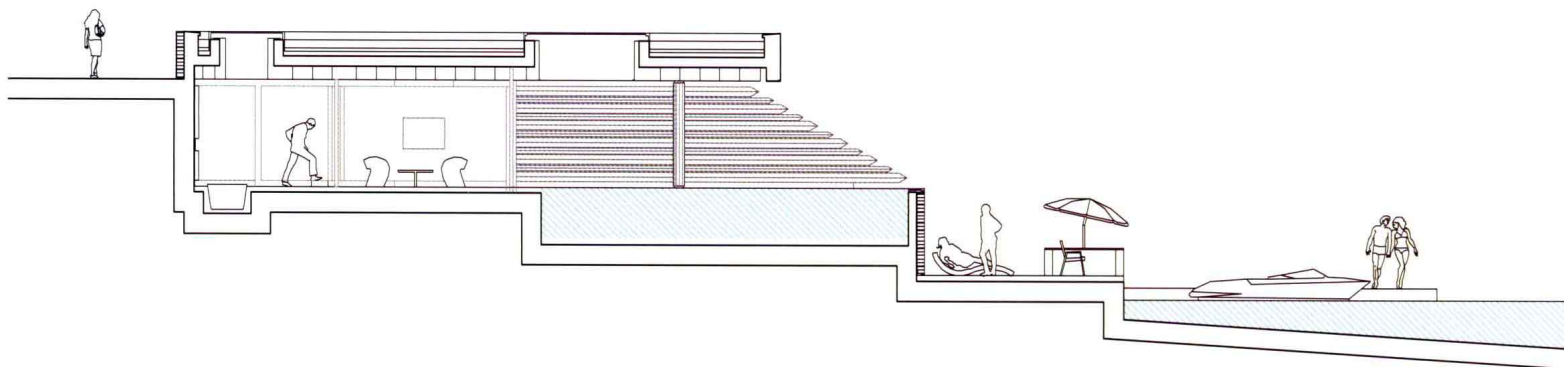
SITE PLAN AND ELEVATION

0 1m 2m 5m 10m



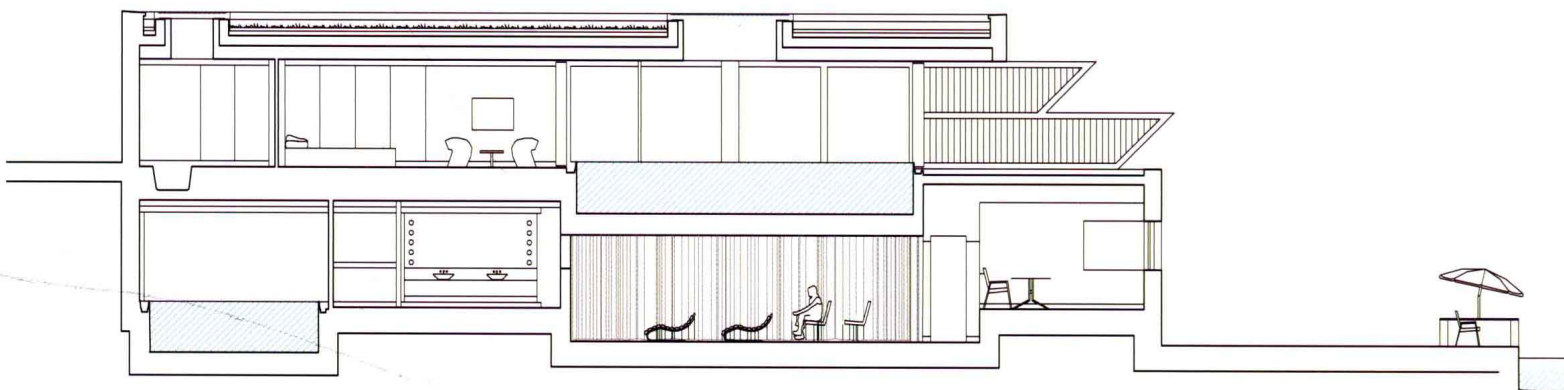






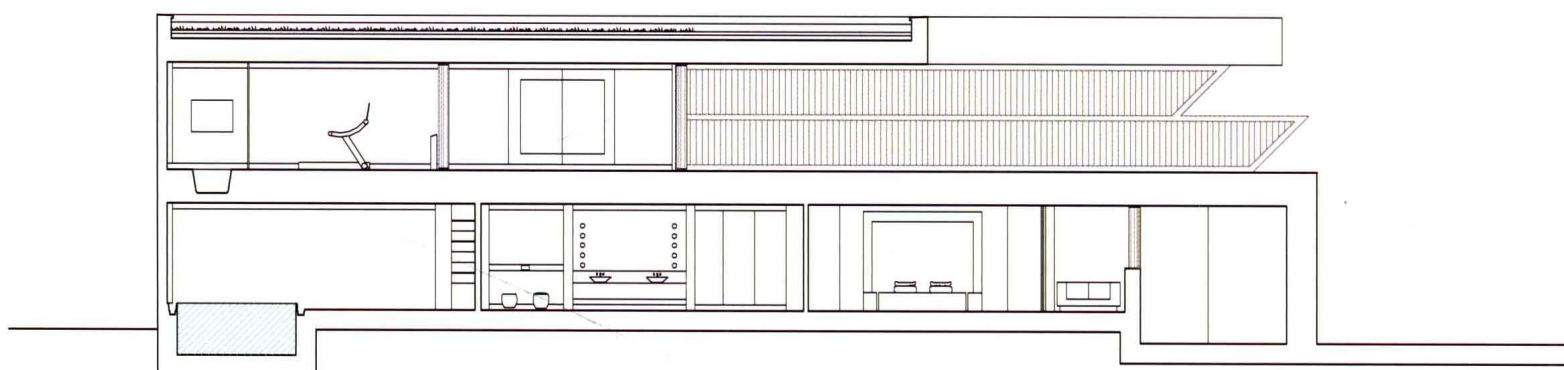
SECTION

0 1m 2m 5m 10m



SECTION

0 1m 2m 5m 10m



SECTION

0 1m 2m 5m 10m