

设计流

02

DESIGN STREAM 居住空间

深圳市南海艺术设计有限公司 / 主编

Residential space

居住空间 I

professional edition of actual scene photographing

实景拍摄专业版



■ 实景拍摄专业版
Professional Edition Of Actual Scene Photographing

居住空间 I

RESIDENTIAL SPACE



温馨时尚

Comfortable and fashionable

注意：
想利用本书所附 VCD
的读者，请持本书索取
号与本馆技术部（五
楼）联系

深圳市南海艺术设计有限公司 / 主编

南海出版公司

图书在版编目(CIP)数据

设计流.2, 居住空间/深圳市南海艺术设计有限公司主编.—海口: 南海出版公司, 2003.4
ISBN 7-5442-2442-2

I.设... II.深... III.住宅—室内装饰—建筑设计—图集 IV.TU238-64

中国版本图书馆CIP数据核字 (2003) 第019874号

SHEJI LIU 02——JUZHU KONGJIAN
设计流02——居住空间

主 编	深圳市南海艺术设计有限公司
翻 译	深圳市立言卓翻译有限公司
责任编辑	陈正云 周诗鸿
封面设计	涂丽娜
出版发行	南海出版公司 电话 (0898) 65350227
社 址	海口市蓝天路友利园大厦B座3楼 邮编 570203
经 销	新华书店
印 刷	深圳宝峰印刷有限公司
开 本	635×965mm 1/8
印 张	30
版 次	2003年4月第1版 2003年4月第1次印刷
书 号	ISBN 7-5442-2442-2
定 价	198.00元

南海版图书 版权所有 盗版必究

目录 Contents

温馨时尚

Comfortable and fashionable

新古典风格

Neoclassic style

玲珑居室巧布局

Delicate house with exquisite layout

素淡清灵非等闲

Plain, Fresh and Quite Extraordinary

经典清丽的空间印象

Classical and Elegant Space Image

流淌的典雅气息

Flowing Elegant Breath

精致曼妙的风采

Exquisite and Splendid Style

朗境清音敛风华

Bright Environment and Crystal Sound

Collecting Elegance

激情飞扬 青春焕彩

Flying Emotion and Splendid Youth

春夏秋冬交响曲

Seasonal Orchestra

古朴风味溢雅韵

Simple and Unsophisticated Style with

Elegant Charm

流行色 居家情

Popular Color Shows Residential Style

空间的韵律

Space Melody

气势卓绝 大家风范

Great Momentum and Noble Manner

朴雅隽逸

Elegant and fine

似水年华

Time Like Flowing Water

温润怡人 浓情家居

Warm and Pleasing with Strong Home Style

雅致小居

Elegant Little Residence

中西合璧显尊华

Chinese and Western Combination Showing Dignity

方正大度 笔墨飘香

Regular and Magnanimous Fragrant Writing

精简生活幸福家

Simple Life Happy Family

浪漫之旅

Romantic Trip

温婉清丽饰秀苑

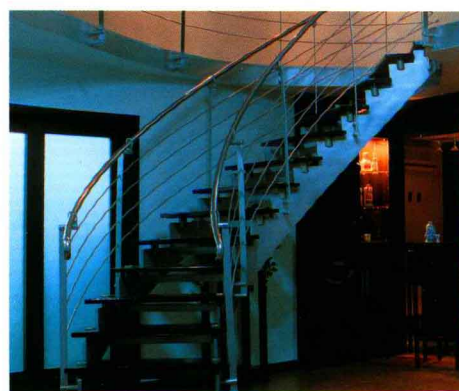
Gentle and Clear Decoration of Delicate Garden

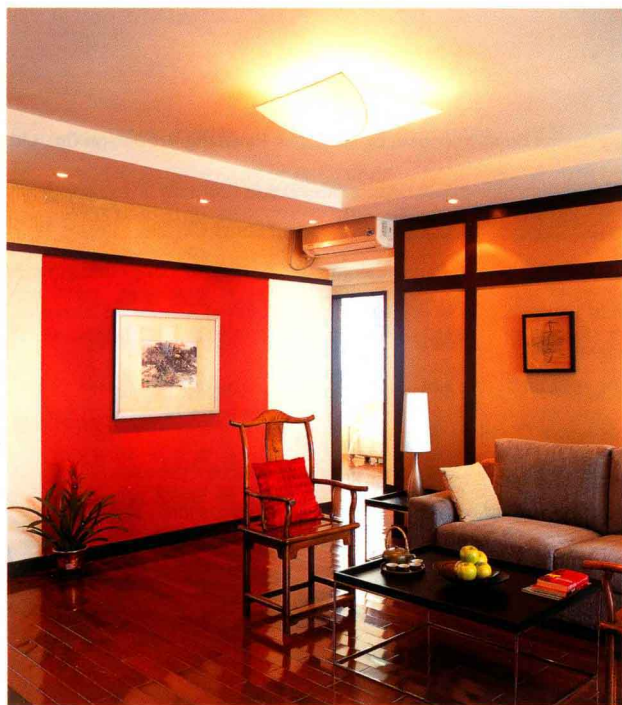
飘逸轻灵梦幻居

Elegant and flexible dreaming residence

文化传承 心灵驿站

Cultural Inheritance, A Stop for Heart





畅想乐园

Dreamful Paradise

环湖静色

Quiet Scene of Huanhu

中西居室文化的交融

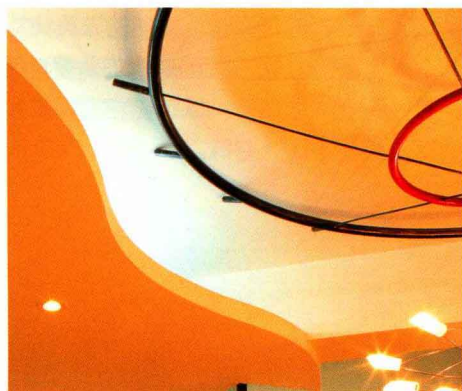
Merging of Chinese and Western Residential Culture

闲雅简约的气韵

Elegant and Concise Charm

雍雅趣致的个性空间

Elegant and Delightful Personal Space



流风余韵

Flowing wind with lingering charm

清新自然风

Fresh and Natural Style

阳光精舍

Sunlight Residence

恋家情结

Home sentiment

古雅简约东方情

Ancient Elegant and Concise Oriental Sentiment

纯净通透的视觉感受

Pure and Penetrating Visual Feeling

气韵曼雅中式风

Elegant Chinese Style

闲雅隽逸现代居

Elegant and leisure modern house

流畅细致的生活美学

Smooth and Meticulous Living Esthetics

简约时尚

Concise and Fashionable

卓犖不凡

Outstanding and Uncommon

卓雅宅第巧镶饰

Elegant House with Exquisite Decoration

温情恬雅 人性关怀

Gentle and Elegant with Humanistic Care

错落有致的空间布局

Space Layout Staggered in Good Order

绿色风景线

Green Scenery Line

高雅的生活艺术

Elegant living art

欢乐的音符

Happy Musical Note

浅谈家居装潢设计

On House Decoration Design

李益中/深圳市派尚艺术设计有限公司设计总监

1993年大连理工大学建筑系毕业

1998年创立深圳市派尚环境艺术设计有限公司

2000年度中国室内设计大赛住宅工程类一等奖

2002年度亚太区室内设计大赛样板房/展示类别荣誉奖

2002年度亚太区室内设计大赛住宅类别荣誉奖

2002年度深圳市建筑室内装饰展一等奖

2002年度深圳市建筑室内装饰展优秀奖

Li Yizhong/Design Superintendent of Shenzhen Paishang Art Design Co., Ltd.

1993 Graduated from Architecture Department of Dalian University of Technology

1998 Founded Shenzhen Paishang Environmental Art Design Co., Ltd.

2000 First Prize for Residence Project Category of China Interior Design Grand Contest

2002 Special Honor Prize for Model House/Show Category of Asia-Pacific Interior Design Grand Contest

2002 Special Honor Prize for Residence Category of Asia-Pacific Interior Design Grand Contest

2002 First Prize of Shenzhen Architecture Interior Decoration Exhibition

2002 Excellence Prize of Shenzhen Architecture Interior Decoration Exhibition

21世纪的今天,随着生活节奏的加快,生活水平的提高,家除了满足人们日常居住、情感依赖的需求,更是成为人们生活品位的一种象征。家居装潢设计也随之成为社会的热门话题,在人们心中占着举足轻重的地位。

影响家居装潢的因素有许多,例如地段、环境、户型结构、朝向,业主的知识结构、兴趣爱好、经济能力等不一而足。一般来说,一个好的设计方案应注意以下几点:

一、家居装潢设计的特点

1. 针对性——家居装潢设计一般是为满足个体家庭的居住需求服务。设计师必须分析业主家中各成员的职位、生活习惯、知识结构、兴趣爱好,等等,然后把所得信息用设计语言表达出来。

2. 实用性——普通家居装潢设计的实用性应强于展示性,这一点与样板房完全相反。

二、家居装潢设计的原则

家居装潢设计其实是户型结构的美化和再创造,以便完美地展现在业主面前。因此,家居装潢设计的关键就是:

1. 扬长——充分展示自己的优点。灵活的房间结构、大的面积、好的采光、较高的层高、良好的视野等等都可以充分展示出来,并且以设计的手法加以引导强化。比如有些房子无梁无柱,那我们可以自由组合上下功夫,展示房间间隔灵活的一面;如果层高比较高,则可以引导业主去加盖夹层,使人们

觉得房子的使用面积大于建筑面积。

2. 避短——通过设计的手法来弥补户型的缺憾。比如说房间狭小,最常用的处理手法是错觉法,利用人的视觉错觉,借用明镜的反射给人以空间扩大的感觉,也可用色彩的微差来调整改善空间;另外常用的还有放开法,通过空间的局部放开,扩大空间界面。

三、家居装潢设计的风格

就流行的风格来说,主要有如下几类:

1. 理性的现代主义——

(1) 简约之风——这种风格注重点线面之间的关系,追求一种理性的简约,体现现代感和时尚感。

(2) DIY风格——拼装式的做法,所有家具配饰均可拆卸,自己可以一个零件一个零件地组装。“Do it yourself”的概念。

2. 混融的折中风格——

在相对中性的背景之下,在陈设布置方面突破国界地域的局限,创造出既矛盾又和谐的面貌。

(1) 港式风——典型的表现是房间四周都有石膏线角、收口,陈设却都是极现代简洁的家具饰品。

(2) 禅风——在极现代的背景之下,通过对形式比例的控制,加上极富东方韵味的器物摆设,创造出清简朴实、澄澈淡定的境界,耐人寻味。

(3) 新中式风格——明清式家具的简洁一直为人们津津乐道，同时也和现代风格找到契合点。这两种简洁的精神相融相生，和谐共处，在冲突之中凸现时空的交错。这种风格很受知识分子阶层的喜欢。

(4) 新古典风格——新古典风格和建筑流派所说的后现代主义一脉相承。将欧式线条简洁化，延续古典风格的内在比例关系，延续其文脉，亦体现时代感。这种风格典雅、高贵，是新贵们极力追捧的对象。

(5) 新乡土风格

四、家居装潢设计的关键因素

如何让家居装潢变得舒适、温馨，且富有情调，如下几个因素可以帮你：

1. 光、灯具——光是营造气氛的高手。家居生活中，照明分三种方式：为空间提供基本亮度的背景照明；调和室内光差，使感觉更舒适的辅助照明；室内活动时供人们看清物体的重点照明。背景照明、辅助照明、重点照明三种照明的光亮度比例是1：3：5，这三种灯光照明组合得当可产生迷人的效果。照明设计时，有时不希望看到灯具，有时则要让灯具成为装饰的一部分。好的灯具具有很好的装饰效果，为空间增色不少。

2. 色——颜色最能刺激人的视觉神经。在设计中，当我们赋予色彩以含义时作品会更富有生命力。设计师要挖掘色彩的潜在感染力，比如江南民居的黑瓦、白墙、赭色大门传达一种素雅质朴的意象；巴洛克风格则是华丽色彩的组合，渲染豪华而古典的风格；室内环境则常以古铜、酒红等表现优雅高贵的格调……光与色应完美地配合使效果更强化，同时要注意有色光对色带来的影响。比如绿色遇红光则暗淡，呈现黑色；黄光照射黄色物体则发灰，等等。

3. 新材料、新技术——新材料、新技术的应用可以让人耳目一新，加强整个家居空间的时尚感。

4. 配饰——配饰设计的原则是少而精，并且一定要到位。我的一位老师曾说过：“装修是一门选择的艺术。”形式要选择，材料要选择，配饰亦要选择。配饰的选择看是否符合设计的风格、情调，而且要画龙点睛，点到即止。

可以说，家居装潢设计是一门现实的艺术，如何运用现有的设计元素完成不同的业主对空间的梦想，是每个设计师应该时时思考的问题。



In today's 21st century, with the speeding up of the living rhythm and improvement of the living standard, in addition to meeting people's daily residence and sentimental dependence requirement, the house has more become a symbol of the people's living taste. The house decoration design has accordingly become the hot topic of the society, taking the important position in the heart of the people.

There are many factors affecting the house decoration, such as place, environment, house layout and construction, orientation, owner's knowledge, interest and hobby, economic ability, etc. Generally speaking, a good design scheme should pay attention to the following points:

I. Feature of House Decoration Design

1. **Pertinence** — The house decoration design normally serves to meet the residential demand of the individual family. The designer must analyze the occupation, living habit, knowledge structure, interest and hobby of the family members of the owner, and then express the information acquired with design language.

2. **Practicability** — The practicability of ordinary house decoration design should be stronger than its show feature. This is completely opposite to the model house.

II. Principle of House Decoration Design

The house decoration design is actually the house structure beautifying and re-creation so as to perfectly demonstrate in front of the owner. Therefore, the key of the house decoration design is:

1. **Exploit fully to one's favorable conditions** — Fully show his own advantage. Flexible room structure, large area, good lighting, high floor level and good field of vision can be fully demonstrated, and guided and strengthened with design style. For example, some houses don't have beams and columns, then we can concentrate our efforts on the free combination and show the flexible side of the room partition; if the floor level is high, then guide the owner to add the interlayer, making people feel the usage area of the house is bigger than the floor area.

2. **Avoid unfavorable conditions** — Make up for the defects of the house through design style. For example, if the room is narrow and small, the commonly used method is the illusion one, utilizing the reflection of the bright mirror to give the people a feeling of enlarged space, the slight color difference can also be used to adjust and improve the space; besides, the commonly used method includes open one, expanding the space interface through the local



opening of the space.

III. House Decoration Design Style

As far as the fashion style is concerned, there are following main categories:

1. Rational modernism —

(1) **Concise style** — This style focuses on the relationship between the dots, lines and faces, seeks a kind of rational conciseness, and shows the modern and fashion feeling.

(2) **DIY style** — This is a kind of assembling practice. All the furniture ornaments can be dismantled and you can assemble them parts by parts. This is the concept of "Do It Yourself".

2. Mixed compromise style —

Under the relative neutral background, break the restriction of the country boundary in the aspect of arrangement and layout, creating both contradictory and harmonic style.

(1) **Fashion style** — The typical demonstration is that there are plaster lines and finishing joints surrounding the room, but the



display is very modern and concise furniture ornament.

(2) Zen style — Under the extremely modern background, through the form proportional control, together with the oriental style of appliance layout, create simple, pure, and clear boundary, quite good for people to think.

(3) New Chinese style — People have been enjoying the concise furniture in Ming Dynasty and Qing Dynasty. Meanwhile, we can find the joining point with the modern style. These two kinds of concise spirits are merging and living together, harmonic to live, showing the staggering of the time and space in the conflict. This style is quite favored by the intellectuals.

(4) Neoclassic style — The Neoclassic style comes down in one continuous line with the post-modernism as indicated in the architectural section. Simplify the European-style line, prolong the inherent proportion relationship of the classic style, continue with its coherence, and it also shows modern feeling. This style is elegant and noble, being the object highly appreciated by the new noble people.

(5) New countryside style

IV. Key Factors of House Decoration Design

How to make the house decoration become cozy, comfortable and full of sentiment? The following factors can help you:

1. Light and lamp — Light is superior in creating atmosphere. In the house life, the lighting is divided into three types: background lighting providing basic brightness for the space; auxiliary lighting adjusting the indoor light difference to make the feeling more comfortable; main lighting making the people see the objects during the indoor activity. The light brightness proportion of the background lighting, auxiliary lighting and main lighting is 1:3:5, and the appropriate lighting combination of these three types can generate attractive effect. For the lighting design, sometimes we don't hope to expose the lighting fixture, and sometimes we want the lighting fixture to become part of the decoration. Good lighting fixture has very good decoration effect, adding more charm to the space.

2. Color — The color can stimulate people's optic nerve most. In the design, when we assign the color with meaning, the works will be full of more vitality. The designer needs to explore the potential inspiration of the color. For example, the black tile, white wall and ochre door of the Jiangnan residence express a kind of simple and elegant image; the baroque style is the combination of luxuriant color, demonstrating the luxury and classical style; the indoor environment often uses bronze color and wine red to express the elegant and noble style ... the perfect coordination between the light and color makes the effect stronger; meanwhile notice the influence of colored light on the color belt. For example, the green will turn to dark when meeting the red light, showing black color; when the yellow light shines on the yellow object, it will become gray, etc.

3. New material, new technology — The utilization of new materials and new technology can refresh us and strengthen the fashion feel of the whole house space.

4. Ornament — The principle of ornament design is few but essential, and be sure to be in place. One of my teachers has said before: "Decoration is an art of choice". We have to choose the form, choose the materials, and choose the ornaments. The ornament choice is to see if conforming to the design style and sentiment, and make the finishing point. That's all.

It can be said that the house decoration design is one realistic art. How to utilize the existing design elements to complete the space dream of different owners? It is a question to be considered by every designer all the time.



▲客厅 Living room

项目名称: 风临左岸

发展商: 深业集团(深圳)有限公司

摄影: 陈思

建筑面积: 130.48m²

室内格局: 三房两厅两卫

装修材料: 木地板、地毯、墙纸、清玻等

Project name: Fenglin Zuoan

Development: Shenye Group (Shenzhen) Co., Ltd.

Photographed by: Chen Si

Floor area: 130.48m²

Indoor layout: 3 bedrooms, 1 living room,

1 dining room and 2 bathrooms

Decoration materials: Wood floor, carpet, wallpaper, clear glass, wood

此单元设计以简约及纯粹精致的手法来安排住宅的线条、设色、家具, 形成单纯华丽的新古典风格。

客厅的摆设简洁却不落俗套, 电视墙以凸出的方式做整体规划, 恰能凸显长列摆设的别出心裁。餐厅位于全室动线的交会点, 其古朴高贵的设置在公共空间里形成画龙点睛的效果。天花的独特设计也让人眼前一亮。

主卧以典雅精致为主要特色。儿童房则以清新、空透为主营造了一个舒适、功能齐全的空间, 令人印象深刻。

The design of this house arranges the house line, color and furniture through simplicity and exquisite method, forming the simple and splendid neoclassic style.

The living room layout is simple, conforms to no conventional pattern, and the television wall has an overall plan with protruding method, just highlighting the uniqueness of long display. The dining room is located at the intersecting point of the room's dynamic line, and its simple and noble setup has formed an effect of making the finishing point. The unique design of the ceiling is also quite outstanding.

The master's bedroom takes elegance and delicacy as the main feature, while the children's room creates a comfortable and completely functional space with fresh and penetrating style, quite impressing.





▲卧室 Bedroom



▼卧室 Bedroom

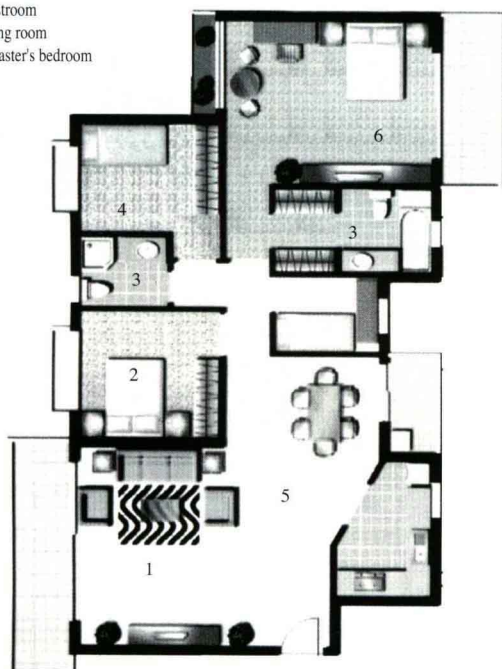


▲书房 Study room



▲卧室 Bedroom

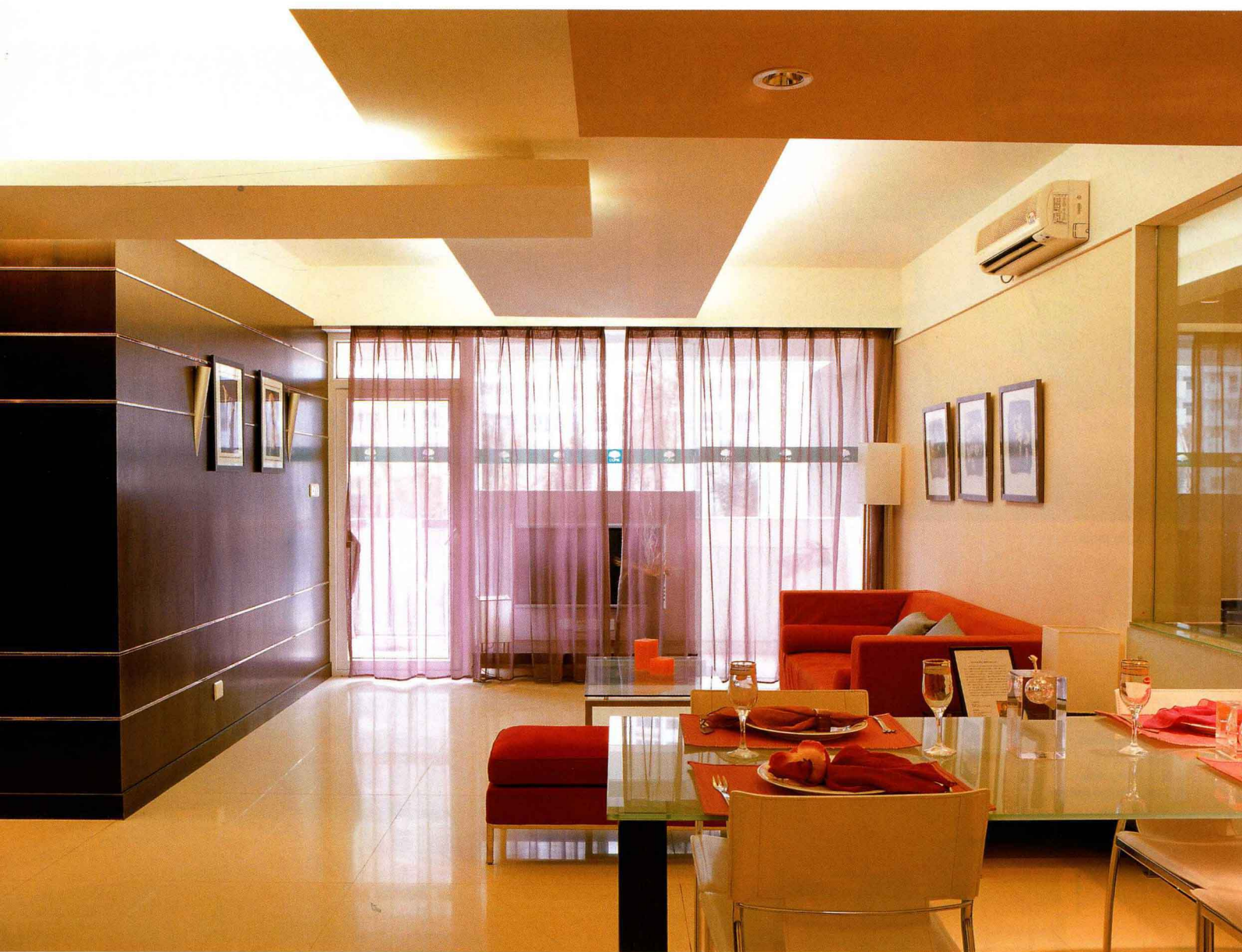
- 1. 客厅 Living room
- 2. 卧室 Bedroom
- 3. 洗手间 Washroom
- 4. 客房 Guestroom
- 5. 餐厅 Dining room
- 6. 主卧室 Master's bedroom



平面图 Plan view

▼卧室 Bedroom





▲餐厅 Dining room

项目名称: 海印长城

设计单位: 香港石安空间创建有限公司

发展商: 深圳市长城地产(集团)股份有限公司

摄影: 喻楚迪

建筑面积: 107m²

室内格局: 三房两厅

装修材料: 木材、抛光砖、墙纸

Project name: Haiyin Changcheng

Designed by: Hong Kong Shian Space Creation Co., Ltd.

Development: Shenzhen Great Wall Real Estate (Group) Co., Ltd.

Photographed by: Yu Chudi

Floor area: 107m²

Indoor layout: 3 bedrooms, 1 living room and 1 dining room

Decoration materials: Wood, polished tile, wallpaper



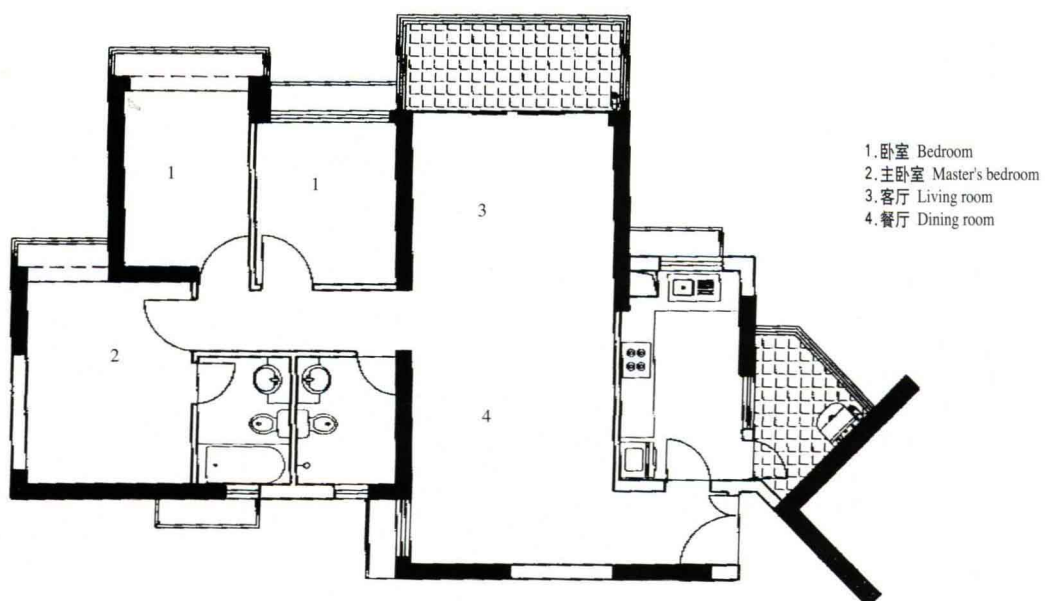
▲餐厅 Dining room

本案例中设计师大量运用玻璃的通透感，拓展了空间和视野；错落层叠的天花，使整个空间协调统一；窗台改成展桌、床位的上移都让房间的使用面积和活动空间得以增加。

In this project, the designer has utilized large amount of glass penetration and explored the space and field of vision; the staggered and stacked ceiling makes the complete space coordinated and unified; the windowsill is changed into desk with drawer, and the bed position moved upward has increased the usage area and activity space of the room.



▲厨房 Kitchen



平面图 Plan view



▲卧室 Bedroom

▼儿童房 Children's room



▼书房 Study room



▼浴室 Bathroom

