

HOT SPRING RESORT & SPA

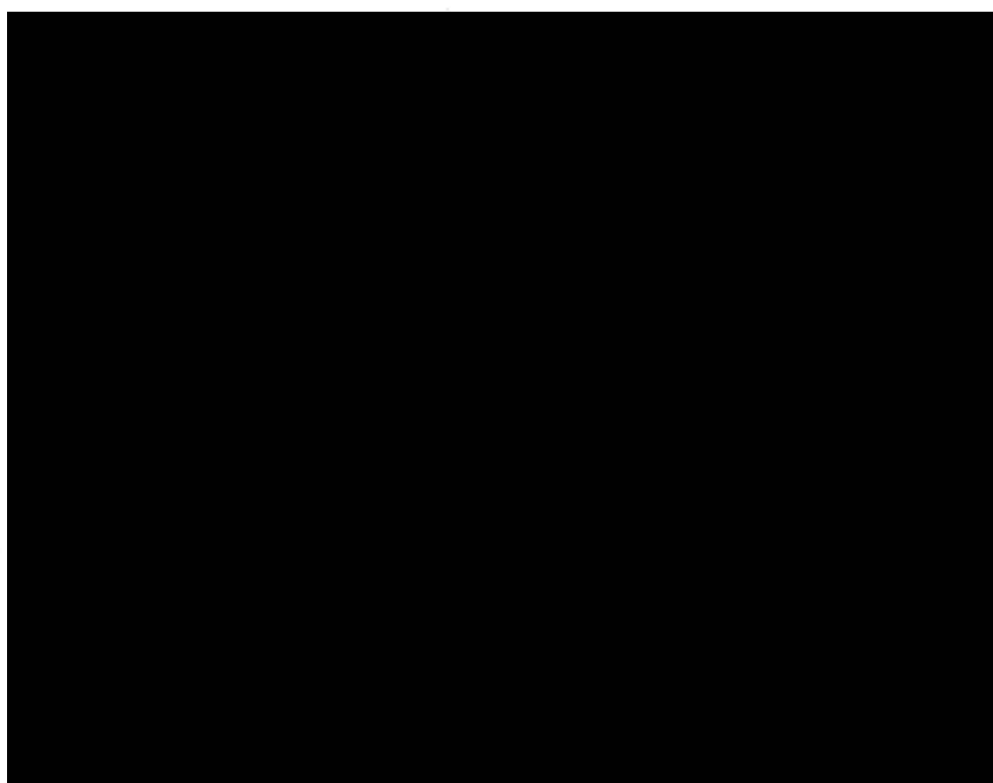
温泉度假村

高迪国际出版有限公司 编
大连理工大学出版社

HOT SPRING RESORT & SPA

温泉度假村

赵欣 译



高迪国际出版有限公司 编
大连理工大学出版社

图书在版编目 (CIP) 数据

温泉度假村: 汉英对照 / 高迪国际出版有限公司编
; 赵欣译. —大连: 大连理工大学出版社, 2013.2

ISBN 978-7-5611-7611-5

I. ①温… II. ①高… ②赵… III. ①温泉—旅游度
假村—建筑设计—世界—图集 IV. ① TU247-64

中国版本图书馆 CIP 数据核字 (2013) 第 020527 号

出版发行: 大连理工大学出版社

(地址: 大连市软件园路 80 号 邮编: 116023)

印刷: 利丰雅高印刷(深圳)有限公司

幅面尺寸: 245mm × 320mm

印 张: 21

插 页: 4

出版时间: 2013 年 2 月第 1 版

印刷时间: 2013 年 2 月第 1 次印刷

策划编辑: 袁 斌 刘 蓉

责任编辑: 刘 蓉

责任校对: 李 雪

封面设计: 郭 聪

ISBN 978-7-5611-7611-5

定 价: 320.00 元

电话: 0411-84708842

传真: 0411-84701466

邮购: 0411-84703636

E-mail: designbooks_dutp@yahoo.cn

URL: <http://www.dutp.cn>

如有质量问题请联系出版中心: (0411) 84709246 84709043

PREFACE

序言

"SPA, hot spring and bath" are a common leisure activity at all times. It used to be a ritual, a trend, a health preservation method, and a luxurious enjoyment. Tangquan Palace is considered as a treasure place by the rulers of Zhou, Qin, Han, Sui and Tang Dynasties. The Huaqing Hot Spring and the good portrayal "bathing in Huaqing Hot Spring in cold spring and enjoying the water touching the skin" are well-known by the Chinese. In the modern time of economic prosperity, people have an affluent life, thus this ancient and luxurious activity becomes a necessary facility flaunted by various hotels and resorts.

People need to take a break in the busy life. They can ease the physical fatigue through sleeping, but the mental tiredness should be wiped off through leisure activities, for example, listening to the music can soothe the mind, reading can cultivate taste, and traveling can relax the tense mood... the most special one is hot spring, which can not only help them recover from fatigue, but also endow them with joyful soul. They take a hot spring bath of mineral and enjoy the beautiful scenery in front, and the weary soul gradually relaxes with the stretch of body, and the warm hot spring water interacts between the pores and cortical cells. The sensory feeling allows their body and the spring to further communicate, and finally they enjoy not only a physical rest, but also a spiritual satisfaction.

At first, taking a hot spring bath is just to warm the body to against the cold, but later people gradually discovered the effect of hot spring on treatment. With the improvement of living standard, hot spring bath, along with visiting folk culture and enjoying local specialties, has become

spa tourism activities that people are familiar with, which is a leisure activity integrating with body and mind. I like a tourism slogan very much, it says setting out to travel is not only to repeat oneself, but to try to feel the surrounding with attention, starting once again. When I went to take hot spring bath, I took my family or some friends, and we chose morning, evening or night to enjoy the sunrise, sunset or starlight; hearing the frogs calling and smelling the sweet-scented osmanthus, and we can feel our mood starting once again. The most profound memory is that we went to a hot spring beside a wild rivulet on the hill at night. It is a pool piled with stone on site by people camping out, in the river bed, and cold water from the stream flew and splashed on our bodies. In the pitch-dark night, we occasionally took out a flashlight and could shine on the owl in the branches, and the gurgling streams and our hip-hop sound of laughter form an impressive and beautiful screen. I cannot forget the special feeling forever.

The activity of hot spring bath features various ways, functions and forms around the world, but I think hot spring bath should not be "fishing in rushing water", but to allow people to enjoy a close and intimate contact with nature through hot spring. Warming body in hot spring, we change the beautiful landscape, nice music and good friends into good ingredients and put them into the "soup" to soak slowly, and our bodies and minds are integrated with the hot spring into a whole. With physical stretch and spiritual washing, we can feel the gift of nature carefully, so as to achieve the combination of mind and nature.

LAI LIAN QU

HANCS Landscape Planning Co., Ltd.

December 19, 2012

"SPA、温泉、沐浴"自古以来就是一项共同的休闲活动。它曾经是一种仪式、一种风潮、一种养生的技术、一种奢华的享受。古有周、秦、汉、隋、唐历代统治者都视为宝地的“汤泉宫”，我们熟知的“华清池”，“春寒赐浴华清池，温泉水滑洗凝脂”便是很好的写照。而在经济繁荣人民生活富足的现代，这项古老而奢华的活动则成为各大酒店、度假村极力追捧的必备设施。

在忙碌之余，人们需要休息。身体的疲惫可以通过睡眠来消除，而心灵的休息则靠休闲活动来调节，比如听音乐可以舒缓心灵，看书可以陶冶性情，旅游可以放松紧张的心情……其中最为特别的一项当属泡温泉，它既能解乏又能愉悦心灵。一边泡着含有矿物质的泉水，一边欣赏眼前美丽的风景，疲惫的心灵随着舒展的身体逐渐放松，暖热的泉水在毛孔及皮层细胞间交互作用，感官带动身体与泉水进一步“交流沟通”，最终，人们得到的不仅是身体上的休息，更是心灵上的满足。

泡温泉最初只是为了温暖身体、抵御严寒，后来人们才逐渐发现泡温泉在理疗上的效果。随着生活条件的改善，泡温泉和参观民

俗文化、吃当地特色美食一同成为人们熟悉的温泉旅游活动，也就是结合了身心为一体的休闲活动。有一句旅游广告语我很喜欢：出发去旅行不是为了再一次重复自己，而是尝试用心灵感受周围，再一次出发。我每一次去泡温泉时都带着家人或者几个友人，选择早上、黄昏或夜里，可以看到日出、日暮或星光；听到蛙鸣，闻到桂花香，感觉都是心情的再一次出发。记忆最为深刻的一次就是夜里到山野溪旁泡温泉。那是野营的人们用现场的石头堆砌的泡池，泡池就在溪床上，不时有冷水从溪边流过溅到身上，漆黑的夜里偶尔用手电筒还可以照到停在树枝上的猫头鹰，潺潺溪流声还有我们一伙人嘻哈的笑语声，形成了一幅有声有色的美丽画面，让我永远无法忘怀。

泡温泉这项活动在全世界有着各种方式、功能、形态，但我认为泡温泉不是在汤汤水水中“浑水摸鱼”，而是让人们的身体通过温泉零距离地与自然亲密接触。用泉水温暖身体，将身边的美景、美乐、好友变成好料放进“汤”中慢慢泡，身心与泉水交融为一体，身体得到舒展，心灵得到洗涤，用心感受大自然的恩赐，从而达到心灵与大自然的合二为一。



赖连取

HANCS Landscape
Planning Co., Ltd.

2012年12月19日

CONTENTS

目 录



Mingtang Hot Spring Resort

茗汤温泉度假村



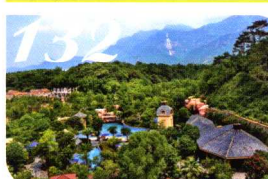
Fujian Strait Culture Homeland Hot Spring Resort

福建海峡文化原乡温泉度假村



Longmen DiPai Hot Spring Resort

龙门地派温泉酒店



Global Villa Hot Spring Paradise

锦绣香江温泉城



Wuxi Lingshan Yuanyi Ri-Star Spa Hotel

无锡灵山元一丽星温泉度假酒店



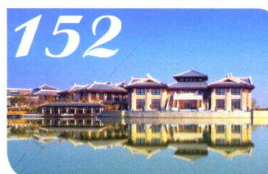
Zhongshan Hot Spring Hotel

中山温泉宾馆园林改造



Mineral Garden and Spa

矿泉花园温泉



Tianmu Lake Tuanbo Holiday Hotel

天沐湖团泊假日酒店



Dino-valley Hot Spring Resort Changzhou

常州恐龙谷温泉酒店



Tianyi Hot Spring Resort

天一温泉度假村



One & Only Hotel

开普敦 One & Only 度假酒店



Qingyuan Shampoola Resort Hotel

清远森波拉度假酒店



Hot Spring Leisure City

温都水城



Nanchang Jinyan International Hot Spring Resort Island

南昌金燕国际温泉度假岛



Wuxi Lingshan Yuanyi International Resort

无锡灵山元一国际度假村



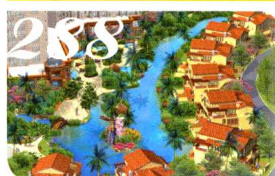
Nanhu Travel Phoenix Lake International Hot Spring Resort

南湖国旅凤凰湖国际温泉度假村



A Garda Lake Hotel with Ayurvedic Style

加尔达湖阿育吠陀风格酒店



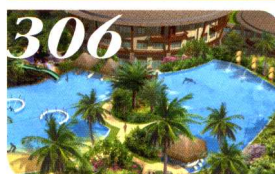
Riyuegǔ Hot Spring Country Club, Phase II

日月谷温泉乡村俱乐部二期



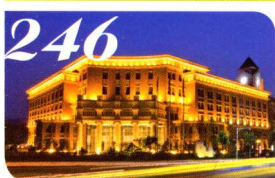
Lintong • Aegean International Hot Spring Hotel

临潼 • 爱琴海国际温泉酒店



Yuanchang Yinhe Central Lake Hot Spring Resort

源昌银河湖心岛温泉度假村



Nanjing Yuhao Tangshan Hot Spring International Hotel

南京御豪汤山温泉国际酒店



Huidong Baipenzhu Hot Spring Hotel

惠东白盆珠温泉酒店

Mingtang Hot Spring Resort

茗汤温泉度假村

项目地点 | 河北霸州

项目面积 | 120000 平方米 (第一期)

会馆面积 | 13000 平方米

设计师 | 陈源盛、曾锦玲、陈亚馨、Annelie Hakansson

设计公司 | 城市设计联盟

景观设计 | LPD Landscape Planning & Design Inc

照明设计 | MICHIKO YOKOTA and LIGHT

客户 | 茗汤休闲度假集团

摄影 | 小雄梁彦影像有限公司





How to redefine quality for 5 star resort hotel which is not mainly by it's physical luxury but more about rich nature experience is the issue the designers have and how to create resort as one sustainable environment is their main concern. Therefore, environment goes first, then landscape experience, architectural form is the last step. For them, architectural form is just based on how to integrate it with surroundings.

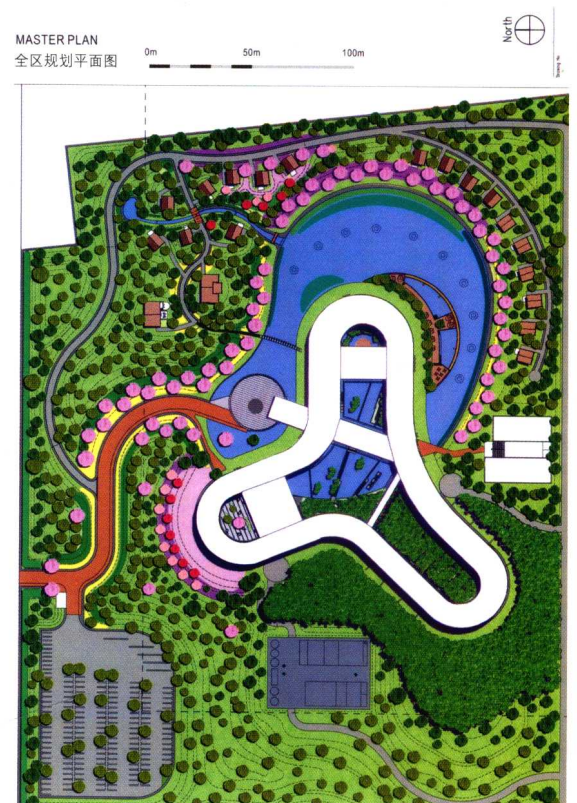
More Nature, More Sustainable

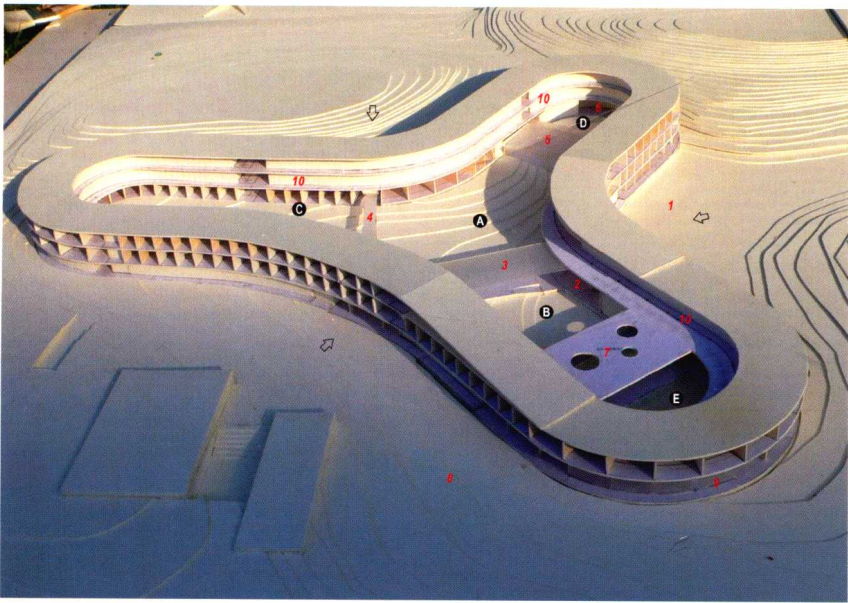
New topography created intends to respond to site's situation which is to have high hill at north side working as defense for cold winter wind from the northwest and low hill at south side to guide cool summer wind from the southeast into the site. Topography also works as base to creates different landscape typologies which will create multiple landscape experience — the hilltop as grassland, the hillside as forest, and the low land as hot spring. Hotel and villas will be set at different position and zoning as groups with different landscape themes such as hot spring resort, forest cottage, and house by the lake.

Architecture in Nature, Nature in Architecture

"Architecture in Nature, Nature in Architecture" is the basic concept for the hotel. In the way, the building is not the one that concentrates on form and style; they intend to create weak and humble architecture which is harmonious and consistent with surroundings. They take linear form for building and the linear form is as a loop. It has been put on topography which still will keep landscape inside and can give maximum proximity and access to the landscape outside. Moreover, it also works as a three-dimensional corridor to guide guests experiencing environment and as the best circulation for flow of people as well.

The designers hope this resort could be an environment which people can experience by not just only vision, but hearing, smell, and touch as well. It is just simply you can hear the voice of water, birds, and wind going through bamboo, and can feel the hot spring and smell the flower as well.

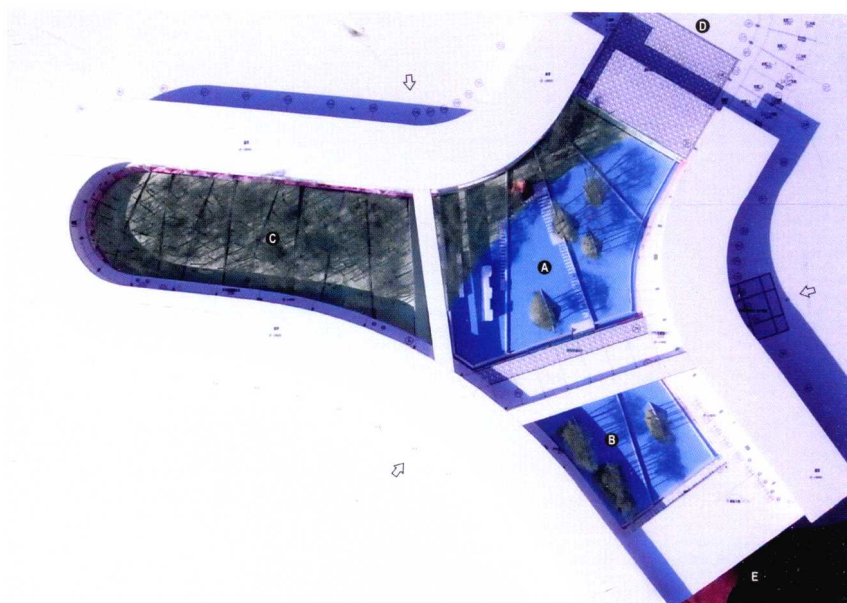




HOTEL MODEL
旅馆建筑模型

- A. WATER COURTYARD 水景中庭
- B. WATER COURTYARD 水景中庭
- C. BAMBOO COURTYARD 竹林中庭
- D. FLOWER COURTYARD 乾景中庭
- E. WATERFALL COURTYARD 水瀑中庭

- 1. Hotel entrance 温泉旅馆入口广场
- 2. Lobby 入口大厅
- 3. café 温咖啡厅廊道
- 4. Bridge 景观桥
- 5. Restaurant 餐厅开放区
- 6. Restaurant room 餐厅包厢区
- 7. Indoor swimming pool 室内温泉泳池区
- 8. outdoor swimming pool 户外温泉泳池区
- 9. SPA
- 10. 2nd Guest room & Corridor 二楼客房区及廊道



LANDSCAPE MODEL OF COURTYARD
景观中庭模型

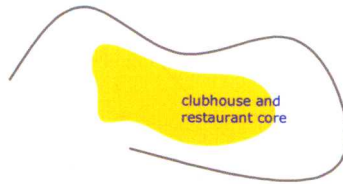
- A. WATER COURTYARD 水景中庭
- B. WATER COURTYARD 水景中庭
- C. BAMBOO COURTYARD 竹林中庭
- D. FLOWER COURTYARD 乾景中庭
- E. WATERFALL COURTYARD 水瀑中庭

1



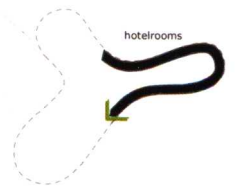
traditional block hotel break into small room
superior to the surrounding

3

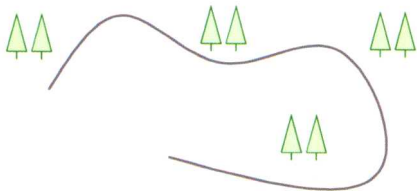


the proximity to the clubhouse and restaurant facilities

5

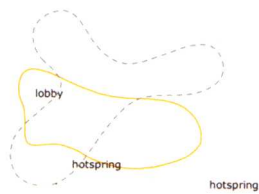


2



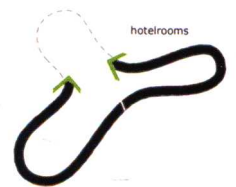
by bending the line
we optimize with the landscape connection

4

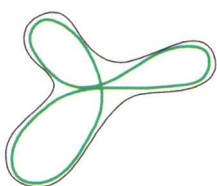


landscape site plan

6

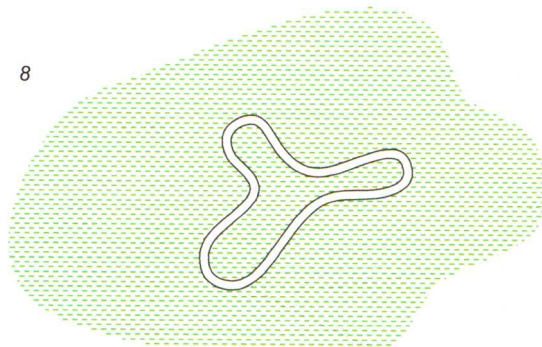


7



circulation scheme

8

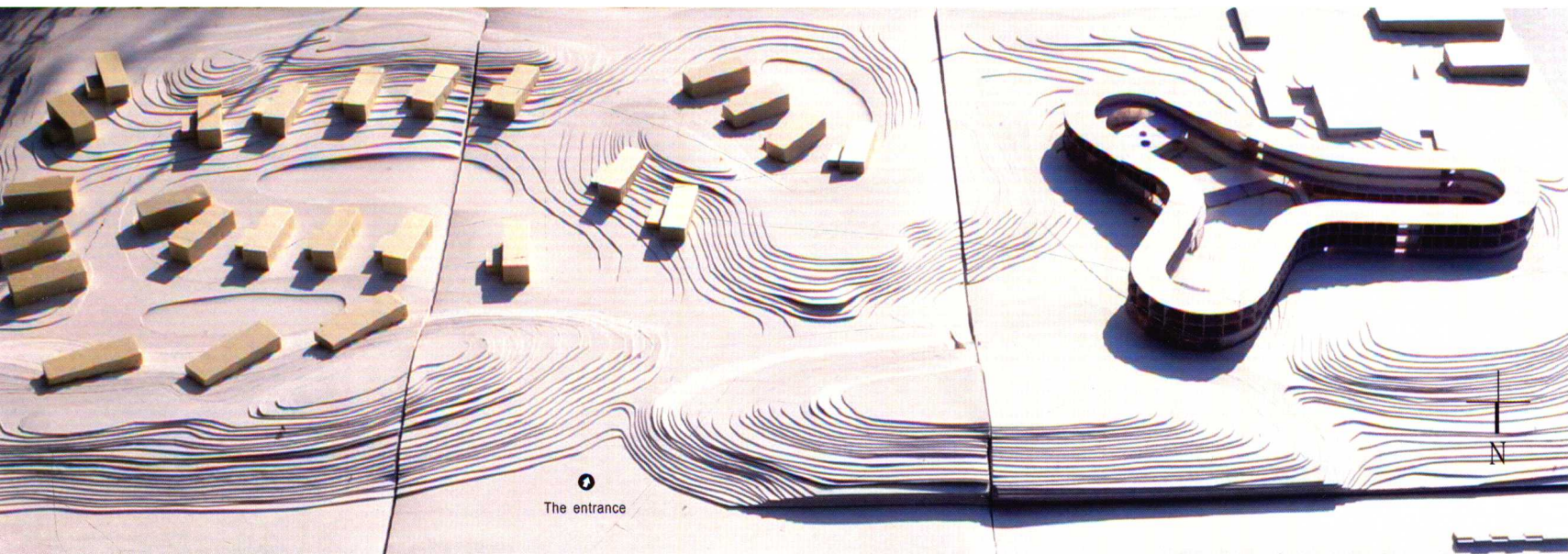


by creating a low density building gently layed out over
the hotspring landscape we aviod creating a very heavy
solid building and instead the building keeps the landscape
on all sides of the facades.

9



Mingtang hotspring resort



如何通过环境带给人心灵感受上的丰富性，而不是根据豪华程度来定义五星级度假旅馆的质量是设计师关心的议题。因此，此案的目的首先是要塑造一个适合的环境，然后再置入景观的主题与经验，最后才是建筑形式的考虑。对设计师而言，建筑最后的形式只是在思考如何与周围形成的环境相融合。

更多的自然，更多的永续

在全区布局上，藉由重新塑造的地形来响应气候对基地的影响：在北面，较高的地形如同屏障一般来阻挡冬季寒冷的西北季风，在南面则以低的地形引导夏季凉爽的东南季风进入基地。而不同的地形也形成了不同的景观类型及塑造了多样性的景观经验：丘顶 - 草原 / 山坡 - 树林 / 低地 - 温泉。环境形成之后，在不同的地形置入会馆及别墅，形成了不同景观主题的群落，例如温泉会馆、湖畔小屋或是林中木屋。

自然中的建筑，建筑中的自然

自然中的建筑、建筑中的自然，是我们会馆规划的主要概念。简而言之，它并不是一个强调造型及风格的建筑。设计师希望塑造一个谦虚且能跟环境融合一致的空间。建筑有如一个线性的环状量体，置入到基地里面却并不会将环境盖掉，同时还能带给空间与景观最大的接近机会。设计师希望建筑空间本身就如同一个三维的循环动线，是一条能够将人带入及体验环境的廊道。

设计师希望这个度假村是一个可以让人在视觉、听觉、嗅觉及触觉上都能够感受得到的环境；能听到水声、鸟声及风吹过竹林的声音，能感受到温泉及雾气，也能闻到花的味道。



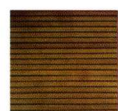


温泉会馆立面图 ELEVATION

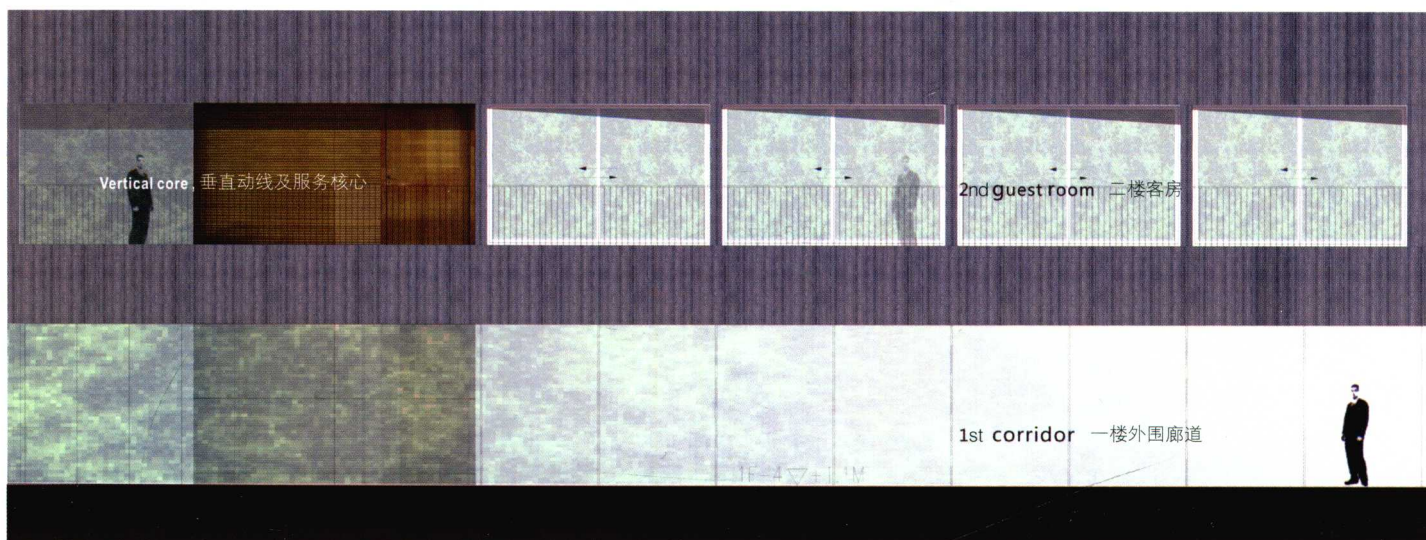
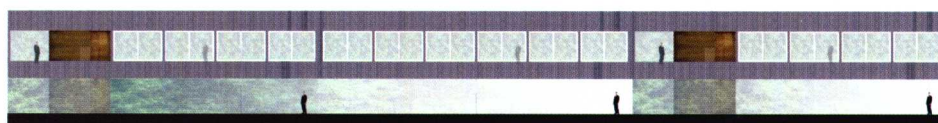
0m 10m 20m



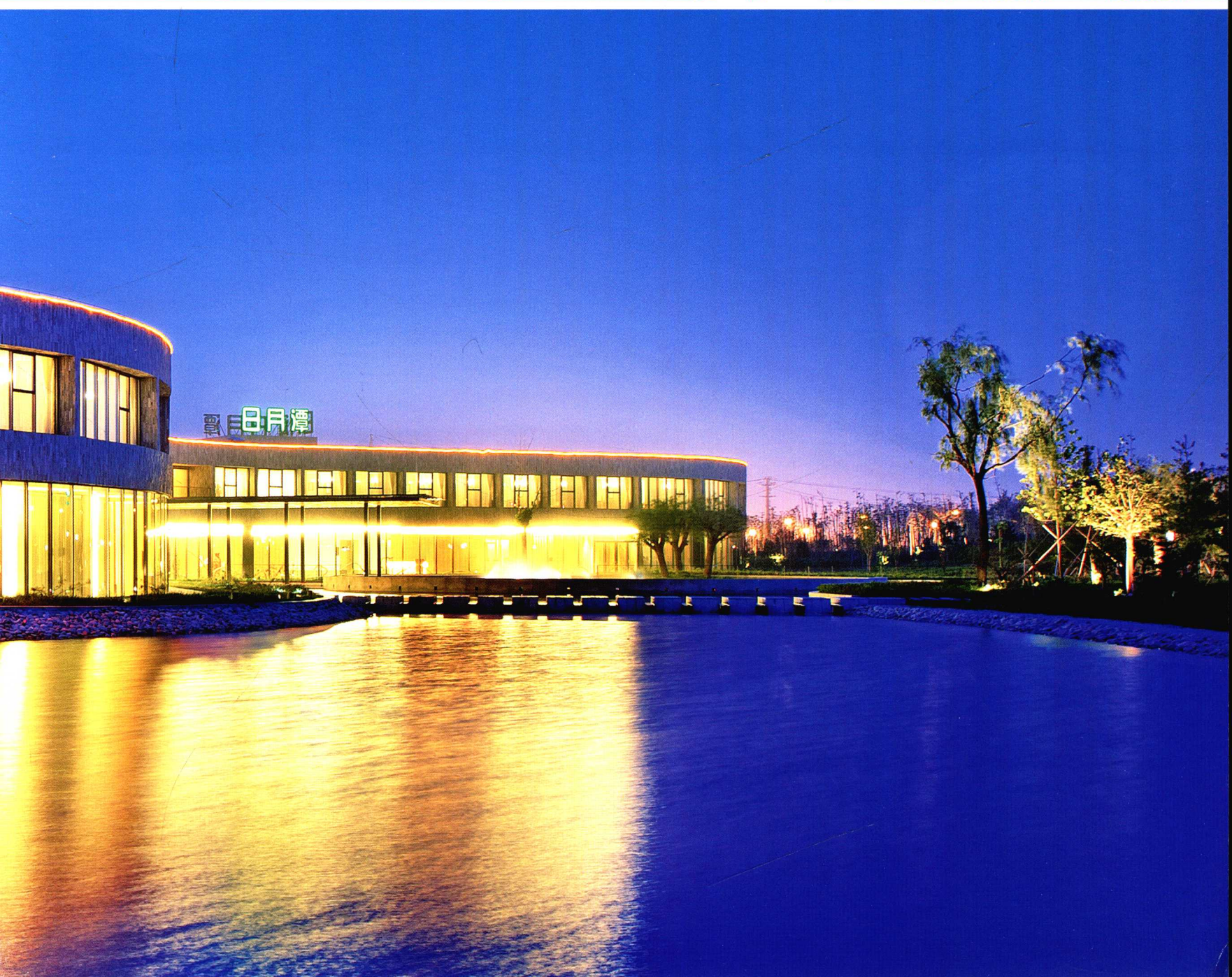
Stone 石材



Wood 实木





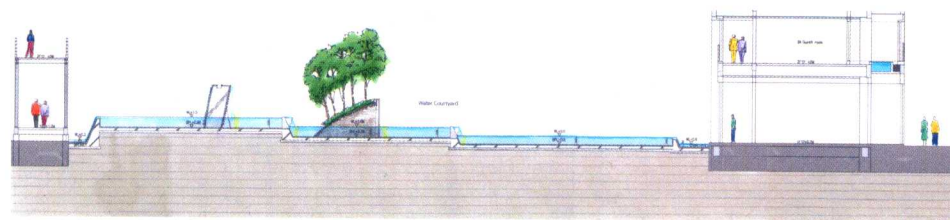




建筑 & 景观 剖面图一 SECTION-1

景观桥 - 水景中庭 - 大厅区
Bridge - Water Courtyard - Lobby

0m 4m 10m



Bridge
景观桥

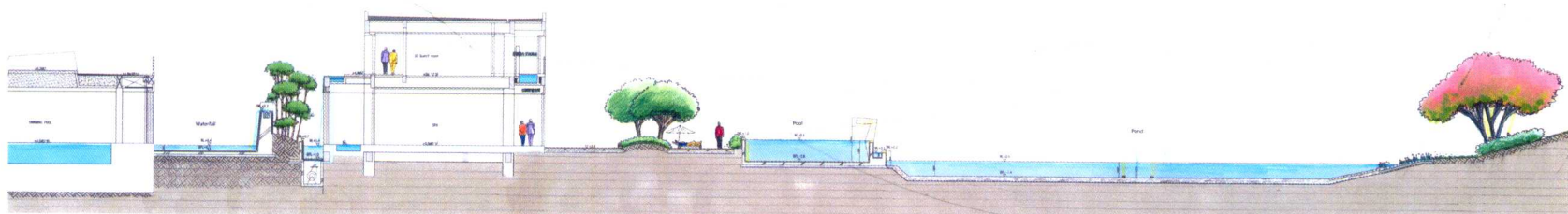
Water Courtyard
水景中庭

Lobby
大厅区

建筑 & 景观 剖面图二 SECTION-2

室内温泉泳池区 - 水瀑中庭 - SPA区 - 户外温泉泳池区 - 景观湖
Indoor Swimming Pool - Waterfall Courtyard - SPA - Outdoor Swimming Pool - Lake

0m 4m 10m



Indoor Swimming Pool
室内温泉泳池区

Waterfall Courtyard
水瀑中庭

SPA区

Outdoor Swimming Pool
户外温泉泳池区

Lake
景观湖

Path
湖边步道

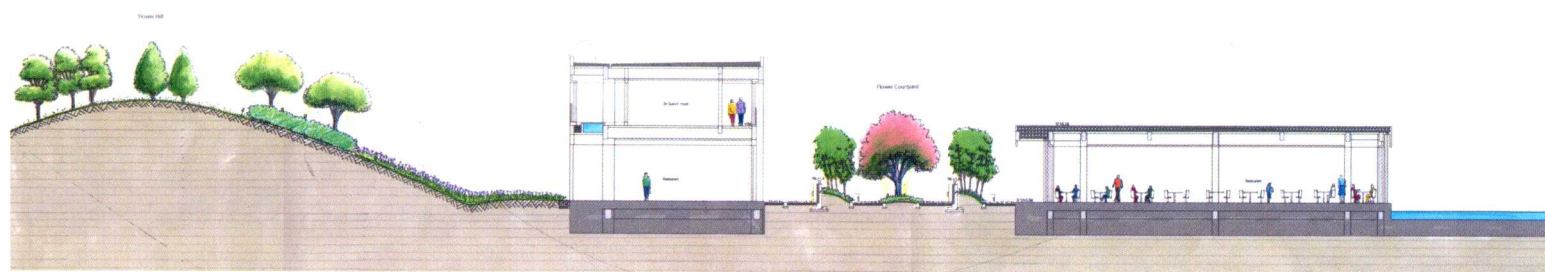


建筑 & 景观 剖面图三 SECTION-3

餐厅包厢区 - 乾景中庭 - 餐厅用餐区 - 水景中庭

Restaurant - Flower Courtyard - Restaurant - Water Courtyard

0m 4m 10m



Flower Hill
花坡

Restaurant
餐厅

Flower Courtyard
乾景中庭

Restaurant
餐厅

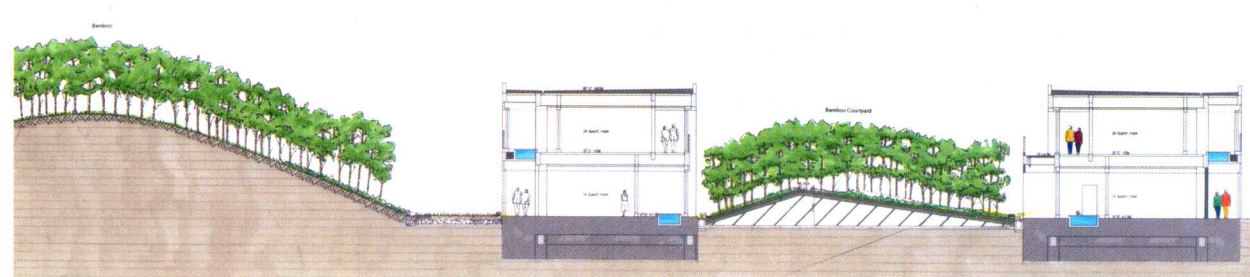
Water Courtyard
水景中庭

建筑 & 景观 剖面图四 SECTION-4

客房区 - 竹林中庭 - 客房区

Guest Room - Bamboo Courtyard - Guest Room

0m 4m 10m



Bamboo Hill
竹林

Guest Room
客房

Bamboo Courtyard
竹林中庭

Guest Room
客房区

