

Education
in Nanjing

与时俱进的

南京教育

南京市教育局
2002. 8.

教育要面向現代化，面向世界，面向未來。

鄧小平





目 录

CONTENT

各级领导关心南京教育·····	1
著名物理学家杨振宁先生在宁演讲·····	8
※ ※ ※ ※ ※ ※ ※	
自然状况·····	9
教育概况·····	10
学前教育·····	15
基础教育·····	17
特殊教育·····	31
职业教育·····	34
民办教育·····	41
成人教育·····	43
高等教育·····	47
校舍建设·····	51
教育信息化·····	57
师资队伍·····	59
教育科研·····	62
国际交流与合作·····	65



中共中央政治局常委、国务院副总理李岚清(中)视察我市琅琊路小学
Li LanQing(middle), Standing Member of Politburo, Deputy Premier inspecting Nanjing Langyalu Primary School



中共中央政治局委员、中宣部部长丁关根(右)、省委书记回良玉(右二)
视察我市玄武区社区教育
*Ding Guangen, Member of Central Politburo, Minister of Publicity Ministry(right),
Hui Liangyu, Secretary of Jiangsu Provincial CPC Committee inspecting Xuanwu
District Community education*



全国人大常委会副委员长许嘉璐(中)视察我市第一幼儿园
*Xu Jialu(middle), Deputy Chairman of the National People's Congress in-
specting Nanjing No 1 Kindergarten*



教育部部长陈至立(中)视察我市金陵中学、北京东路小学,并接受我市中学生采访
Chen Zili(middle), Minister of Education Ministry interviewed by the students of Nanjing Jinling Middle school and Nanjing Beijing donglu Primary school



教育部副部长韦钰(中)来我市长江路小学指导“做中学”
Wei Yu(middle) Deputy Minister of Education Ministry guiding “Study in the course of doing” activity in Nanjing Changjianglu Primary School



江苏省省长季允石(中)视察南京市第一中学
Ji Yunshi(middle), Governor of Jiangsu Province Nanjing No. 1 Middle School



中共江苏省委副书记、中共南京市委书记李源潮(中)在省教育学院附属高级中学
调研指导教育发展工作
*Li Yuanchao(middle), Deputy secretary of Jiangsu Provincial CPC Committee and Secretary of
Municipal CPC Committee investigating about education development in the Affiliated Middle
School of Jiangsu Education Institute*



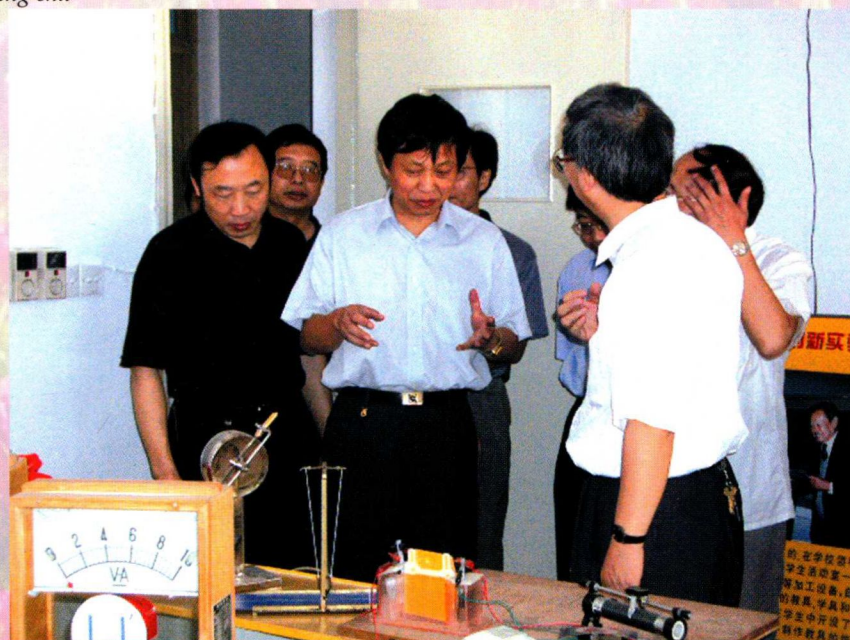
江苏省副省长王珉(右)为国家级重点职业学校——南京莫愁职业学校揭牌
Wang Min(right), Deputy governor of Jiangsu Province opens Nanjing Mochou Vocational School-state key vocational school



南京市市长罗志军(中)视察盲人学校
Luo Zhijun(middle), Mayor of Nanjing inspecting the School for the Blind People



中共南京市委副书记汪正生(中)看望幼儿园孩子们
Wang Zhengsheng(middle), Vice Secretary of CPC Nanjing Committee visiting children in the kindergarten



中共南京市委副书记陈家宝(中)指导中学教学改革
Chen Jiabao(middle), Vice Secretary of CPC Nanjing Committee giving instructions on reforms of middle school teaching



南京市副市长戴永宁(右三)在农村了解教育布局调整工作
Dai Yongning(third right), Deputy Mayor of Nanjing investigating reforms of education
in the countryside



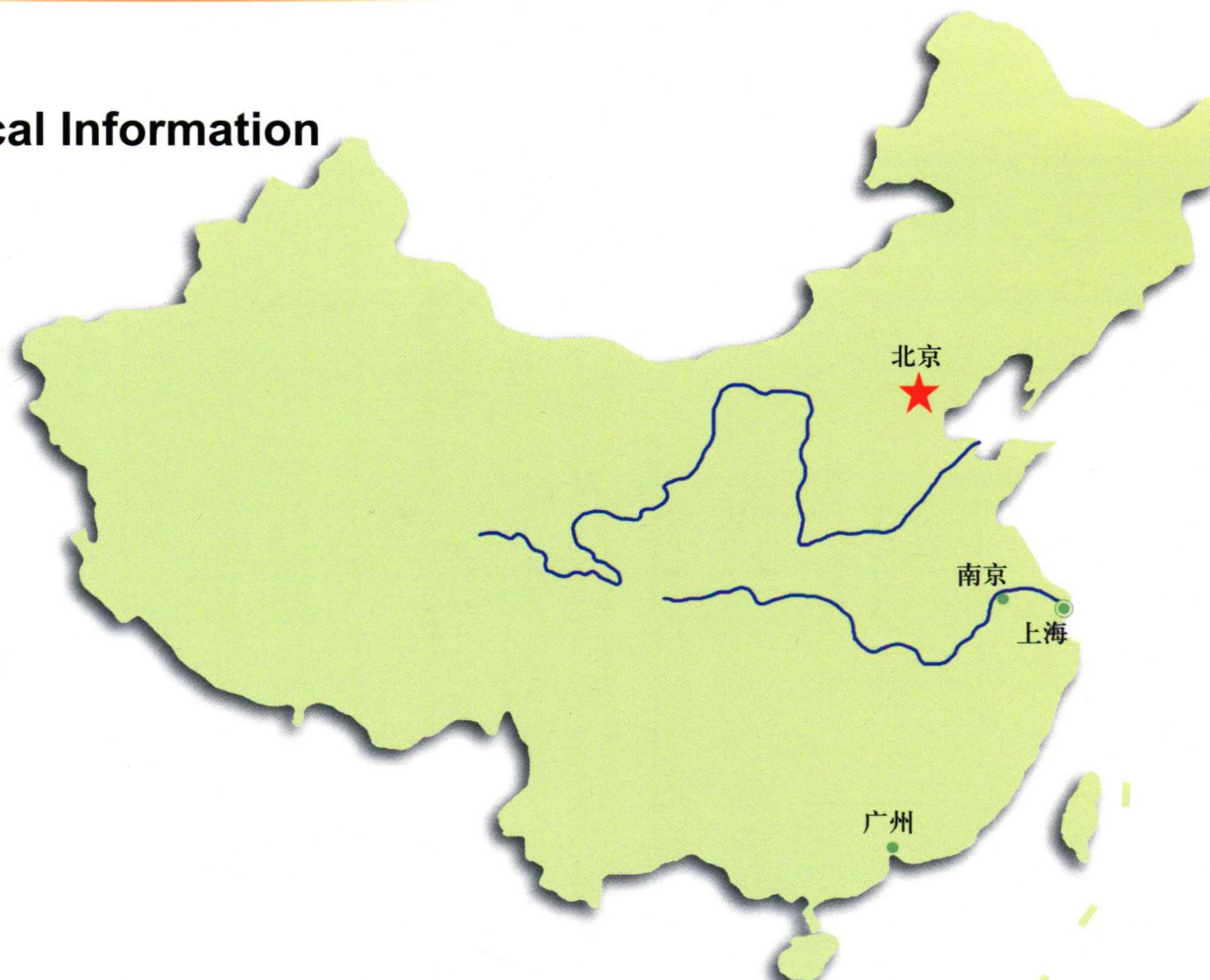
南京市副市长许仲梓(左)与孩子们亲切交谈
Xu Zhongzi(left), Deputy Mayor of Nanjing chatting with pupils



著名物理学家杨振宁先生为我市中学生作演讲
Mr Yang Zhengning, famous physicist lecturing to middle school students

自然状况

Geographical Information



▲ 南京，简称宁，江苏省省会，地处长江下游的宁镇丘陵山区，北纬 $31^{\circ}14'$ ~ $32^{\circ}36'$ ，东经 $118^{\circ}22'$ ~ $119^{\circ}14'$ 。

▲ 南京是中国七大古都之一。早在 35 万年前，就有了“南京猿人”的足迹。自公元 229 年东吴建都南京始，先后有 10 个朝代和政权在这里建都立国，留下了丰富的历史文化遗产。全市总面积 6597 平方公里，总人口 553.04 万人。境内山地、河流、平原交错，城东有钟山屏障，城南有十里秦淮。流经南京段长江的长度约 95 公里。

▲ 南京是中国重要的综合性工业生产基地，已处于工业化中期发展阶段，全市已建立起以电子、汽车、石油化工和一批特色产业为主导的综合性工业体系。

▲ As the provincial capital of Jiangsu Province, Nanjing is situated in the hilly areas of Nanjing and Zhenjiang in the lower reaches of the Yangtze River at $31^{\circ}14'$, -- $32^{\circ}36'$ and $118^{\circ}22'$ - $119^{\circ}14'$.

▲ Nanjing is one of the seven ancient capitals. As long as three hundred and fifty thousand years ago, "Nanjing Ape~~man~~" lived here. Since 229 AD when Eastern Wu set up its capital in Nanjing, ten dynasties have made Nanjing their capitals leaving rich historical and cultural relics. Nanjing has the surface area of 6597 square kilometers with the population of 5.5304 million. There are mountains, rivers and a vast expanse of plains with the Purple Mountain in the east and Qinghuai River in the south of the city. The Yangtse River running through here is 95 kilometers long.

▲ Developing at a middle-stage industrialization, Nanjing is an important comprehensive industrial production base in China. A comprehensive industrial system led by electronic, automobiles, petro-chemical and other specialty industries has been formed.

教育概况

Information on Education

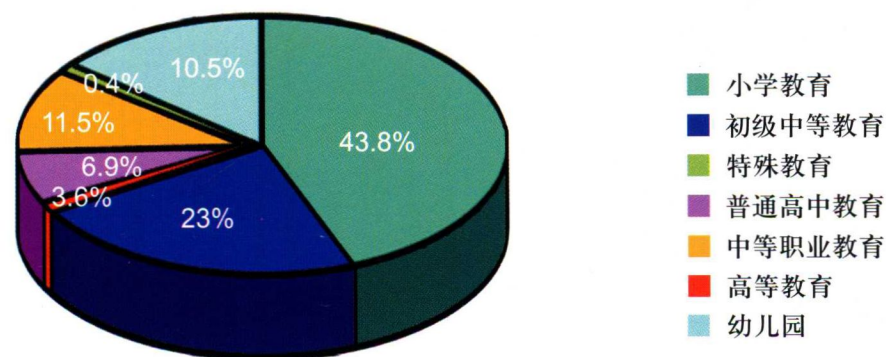
南京的教育源远流长，有文字记载的学校教育始于中国古代的汉朝时期(约公元前 30 年)。夫子庙、江南贡院等教育场所，宋朝以来就闻名全国，至今仍有遗存。南京学校云集，师资雄厚，综合性大学学科齐全，专业性大学优势明显。南京是全国四大科研和教育中心之一。在宁普通高等学校 47 所，在校学生 29 万人，在宁两院院士 73 名。全市已基本形成从幼儿教育、小学教育、初中教育、高中教育到职业教育、高等教育、成人教育比较完整的教育体系。

There is a long history of education. The recorded school education started from Han Dynasty in Ancient China (about 30 BC). Since Song Dynasty, Confucious Temple and Jiangnan Examination Room and others became famous in China. There are many universities with various faculties and teachers boasting their respective advantages. Nanjing is one of the four scientific research and education centers. There are 47 institutions of higher learning with enrollments of about tow hundred and ninety thousand students and 73 academicians. A well-rounded education system of nursery education, primary education, junior high school, senior high school, vocational education and adults education have been formed.



市属各级各类学校在校人数分布

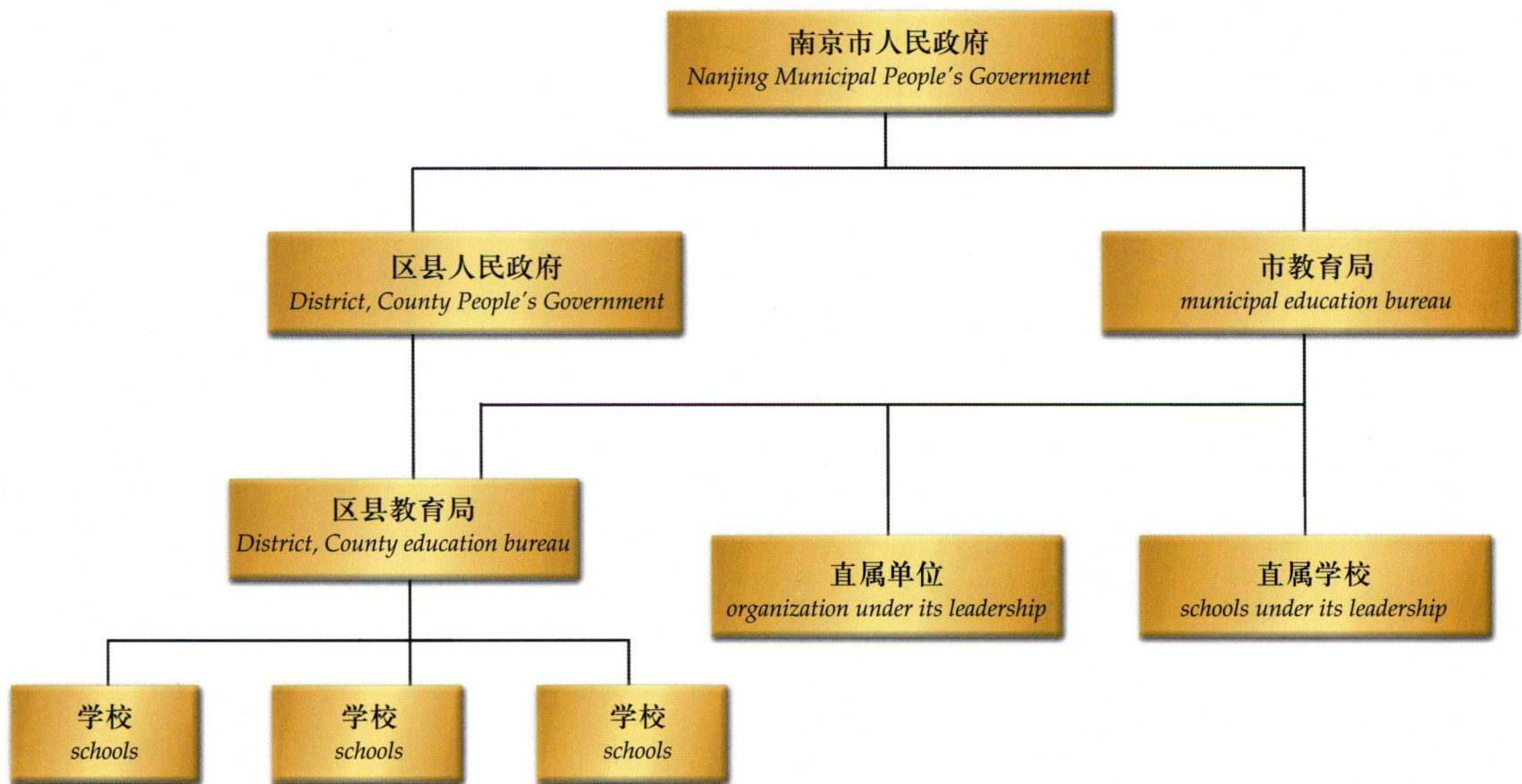
Students distribution in various schools



	学 校 数 number of schools	在校 生 数 registered students	专任教师数 registered teachers
幼 儿 园 Kindergarten	545	100961	6218
小 学 primary school	933	423041	21583
初级中学 junior middle school	199	224242	13636
特殊教育 Education for the Disabled	14	3688	352
普通高中 ordinary senior high school	85	66449	5192
中等职业教育 vocational education	116	111035	5984
高等教育 higher education	20	34872	2522
合 计 Total	1912	964288	55350

教育管理体制

Education Management Mechanism





南京市教育局局长、市委教育工委书记徐传德
Xu Chuande, Director of Nanjing Education Bureau and Secretary of CPC Education Committee