

凤凰空间·华南编辑部 编

Water 园林水景 Garden

Landscape Design Series

造园艺术设计丛书

张志军 译 曾庆文 主审

江苏人民出版社

凤凰空间·华南编辑部 编

Water Garden

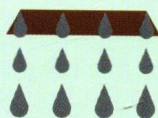
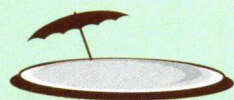
园林水景

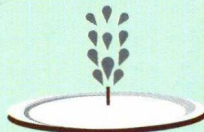
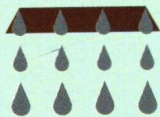
Landscape Design Series

造园艺术设计丛书

张志军 译 曾庆文 主审

江苏人民出版社

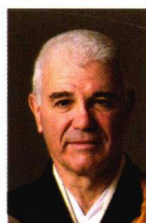




Preface 序言



本书由天津市林业果树研究所
副研究员张志军翻译。



In this book you will view many wonderful water gardens from some of the world's top designers. Some are large, some are complex, some are rather small, and some simple. What do they all have in common? They live at the intersection of art and craft.

The art of water design stems from a deep appreciation for the power and the mystery of water. Water shapes canyons and cuts granite. It can wash away cities. In the form of spring rain it regenerates life, it feeds plants, and strengthens roots. Our bodies are mostly water, and we can't survive for long without it.

The combination of water movement and plant life purifies water. Water is conveyed from the sea in the form of cloud formations to the highest mountains. From there it flows in brooks, creeks, and rivers, through irises, sedges, and other plants, purifying itself in the process.

Still water reflects the surroundings. From your perspective form and reflection behold one another. You are not it, but it is you.

The nature of water is like mind. When quiet, the chaotic swirl settles, and clarity arises. The experience of fresh, clean, and clear water can bring these qualities to us. Water has a strong power of entrainment – that is, our consciousness tracks the sounds, the moisture and feeling of water, and we meld with the qualities of water.

Water defines level. As such it gives rise to geometry and axis. Water is the basis, the ground plane. It is also buoyant and removes us from the challenges of gravity. We can float our bodies, or boats, or cargo ships on water.

Water has always been a central theme in gardens that depict Heaven. Perhaps because it reflects the sky, water joins Heaven and Earth. Pure Land gardens in Japan have a large central pond, dream-like in its beauty. Persian gardens and Mughal gardens of India are all built around water.

The craft of water design is very demanding. Water is unforgiving. If you argue with water about what is level, water always wins. Water wears things out. Water corrodes and carves deep holes in granite.

When water is precious and needs to be carefully contained, any small leak or design flaw can lose an enormous amount of water and be very difficult to detect.

A great deal of the craft of water design is ancient. However, there are some technological developments that have greatly altered the language of what is possible. With electricity came pumps, so water could be moved upward and recirculated. Also with electricity came lighting and before long we were able to put colored lights in pools of water. Then came the variable speed pump and LED lights which can display 64,000 different colors. The pumps, the lights, and sound can be controlled by a computer that can be programmed or reactive to the environment.

What I think you will find as you carefully look at the gardens in this book, is that water is only an elemental component of a total design.

The design includes the structure, the plant material, the boundaries, the qualities of the water containment, the grades, the movement of the body through the space and the eye.

Martin Mosko
Marpa Landscape Design Studio

打开这本书，你将与来自世界各地的顶级设计师一同穿梭于他们倾力打造的水景庭园中，或宏大、或繁复、或精巧、或简单。然而，尽管形式多样，形态万千，这些水景庭园无一不是艺术与手工艺的完美融合。

水景设计起源于人类对水所蕴涵的力量和奥秘的敬仰，并衍生为一门设计艺术。汇水成谷，滴水穿石，时而化身狂怒的恶魔淹没城池，时而化作绵绵春雨滋润万物，这就是水，不仅仅是构成人体的主要成分，也是维系生命的源泉。

水的净化是水体循环和植物生长的共同作用。海洋里的水经过水汽输送到山巅形成云朵，通过降水流入溪涧、湖泊和江河，再通过鸢尾属和青苔等植物来净化自身。

水映万物，从远远望去，一派虚虚实实，层层叠叠，犹如水中月、镜中花，尽管你不是倒影，倒影的却是你。

水的特性就如同人类的心神，当它安静的时候，原本的不规则的漩涡将以一种稳定的、清晰的形式呈现出来，就像我们平时接触到的新鲜的、干净的、清澈的水一样，充分体现了其静的特质。同样，水也具有强烈的带动力，促使我们的意识不自觉地追踪着水的声音、水的形态和水的触感，并被水的各种特质所征服。

水界定了空间的层次，引起了几何和轴的发生。水是底层，是地平面，带有浮力，使我们能克服地球的引力漂浮于水面，甚至在水面划船、航行。

在恍若天堂的庭园里，水总是充当着整个庭园的中心主题，倒影着天空，连接着天与地。例如，带大型中央池塘的日本净土园，如梦如幻，还有印度的波斯式花园，无一不是以水为依托而建的人间天堂。

水景的工艺设计是非常苛刻的。水是不可理喻的，它会以其独特的方式为你呈现什么是层次，同时水又是强大的，能消磨一切，能腐蚀花岗岩，并在上面雕出岩洞。

水十分珍贵，它需要你小心对待，任何一个小小的遗漏或设计瑕疵都有可能导致水体在你毫无察觉的情况下大量流失。

许多水景设计工艺都是古老的，然而，技术的发展却为它带来了无尽的可能。通过电力水泵的使用，实现了水体向上流动和水体的再循环；通过电灯的使用，我们很快就能在泳池的水里放置彩灯；最后，甚至出现了变速水泵，还有LED灯，能变换出64 000种不同颜色。水泵、灯光和流水声都能用可编程或与环境互动的电脑进行控制。

细细品味此书，你将发现水只是庭园总设计中的一个基本构成，一个完整的设计里，还包括庭园结构、植物配置和边界线的设计，以及对水容器的材质、水体的层级、空间和视觉中的水体运动形态的考虑。

Contents 目录



012	L-shape Pool	“L”形泳池
018	Country Life Pool	乡村宁静泳池
022	A Magical Setting	奇幻池
026	Cascading Pool	跌水泳池
030	Stone Paving Pool	砖砌泳池
032	Neo-Mediterranean Pool	新地中海体验泳池
036	Maximum Minimalism	极尽简约泳池
038	Playful Approach	乐趣池
042	Lap Pool	健身型泳池
044	Tropical Feeling Pool	热带风情泳池
048	Mosaic Pool	马赛克池
054	New Orleans Style Pool	新奥尔良泳池
058	Vanishing Edge Pool	无边际池
062	Sammamish Pool	姗玛米斯池
066	Symphonic Fountains	交响喷泉
070	Leisure Time	释然空间
072	Tranquil Pleasures	宁享欢沁
074	Rock Fountain	石砌喷泉
076	Van Gestel Fountain	范加斯特尔喷泉
080	Modern Gem	时尚宝石喷泉
082	Basalt Stone Fountain	玄武岩喷泉

086	Granite Water Wall	花岗岩水墙
090	Cascade from the Seat	椅下跌水
092	Lazy Day Cascade	悠然假日跌水
094	A Strip of Waterfall	狭长跌水
100	Wall Cascade	墙面跌水
104	Flood Discharge Waterfall	排洪跌水
110	The Avenue	林荫美池
114	Dragon's Cosmic Breath	龙吟池塘
118	The Five Realms	五大间
122	Windmill Pond	风车井池
124	A Wonderland	天国之岛
130	Natural Hot Tub	天然热水池
134	Paradise-lost Pond	醉梦青幻池



Pool

泳池

L-shape Pool

“L”形泳池

Country Life Pool

乡村宁静泳池

A Magical Setting

奇幻池

Cascading Pool

跌水泳池

Stone Paving Pool

砖砌泳池

Neo-Mediterranean Pool

新地中海体验泳池

Maximum Minimalism

极尽简约泳池

Playful Approach

乐趣池

Lap Pool

健身型泳池

Tropical Feeling Pool

热带风情泳池

Mosaic Pool

马赛克池

New Orleans Style Pool

新奥尔良泳池

Vanishing Edge Pool

无边际池

Sammamish Pool

姗玛米斯池

L-shape Pool

“L” 形泳池

项目名称

项目地点

面积

景观设计

摄影

Project Name Location Area Landscape Design Photography

Prive by Sansiri
Prive 公寓

Bangkok, Thailand
泰国曼谷

1 144 m²

T.R.O.P

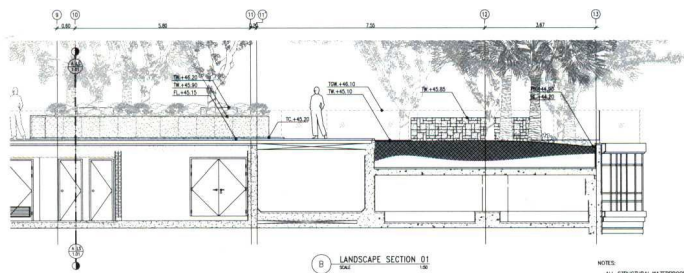
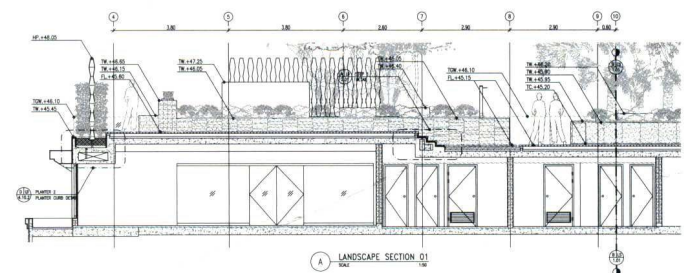
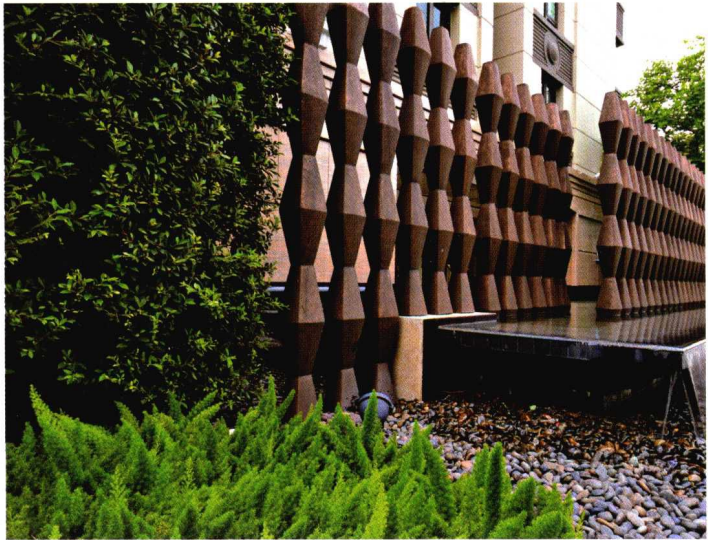
Pok Kobkongsanti, Charkrit Chartarsa



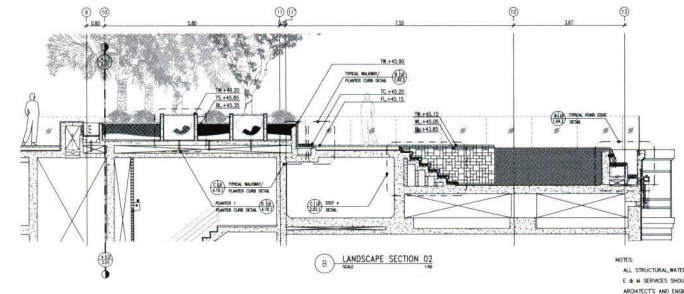
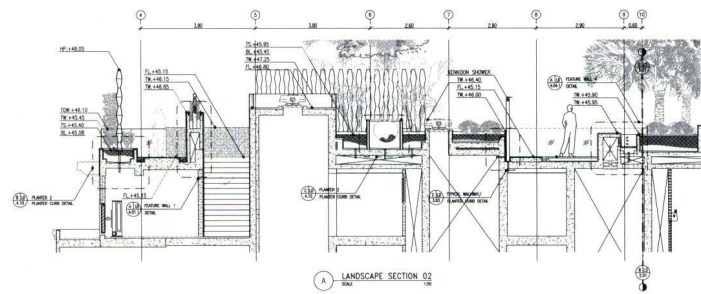
Prive' by Sansiri is an Exclusive Luxury Condominium in the Prime Bangkok Location. T.R.O.P's target group is a successful 40-plus people, so the design has to be neat and elegant and its scope includes the ground floor garden and the swimming pool on the roof.

For the ground floor, Sansiri asked the design team to create a wall to enclose and screen the Lobby from the public. However, designers found that the area was a bit small. So instead of building solid wall, which would make the area feel even smaller, designers proposed a custom-designed sculpture wall as the alternative. The wall is a series of sculptural columns, and each has some space between one another. As a result, the area has some ventilation and plays with natural light in a much more interesting way. At the base of the columns, designers strategically place a reflecting pond to make the visual even more beautiful.

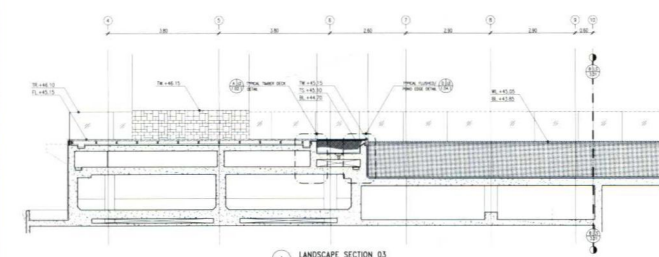




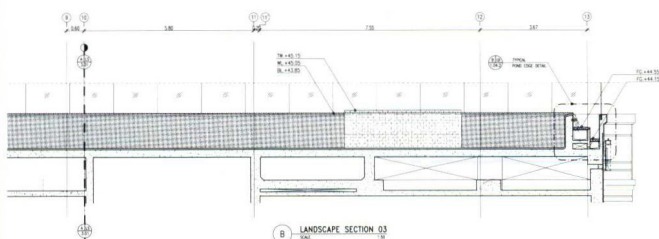
NOTES:
ALL STRUCTURAL, WATERPROOFING AND
E & M SERVICES SHOULD REFER TO
ARCHITECTS AND ENGINEER'S DETAILS



NOTES:
ALL STRUCTURAL, WATERPROOFING AND
E & M SERVICES SHOULD REFER TO
ARCHITECTS AND ENGINEER'S DETAILS

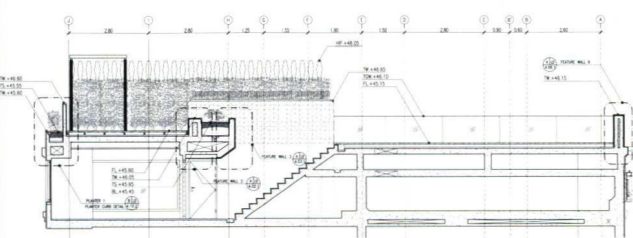


A LANDSCAPE SECTION 03
SCALE 1"=50'

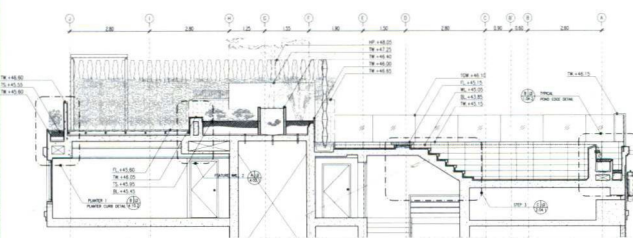


B LANDSCAPE SECTION 03
SCALE 1"=10'

NOTES:
ALL STRUCTURAL, WATERPROOFING AND
E & W SERVICES SHOULD REFER TO
ARCHITECTS AND ENGINEER'S DETAILS

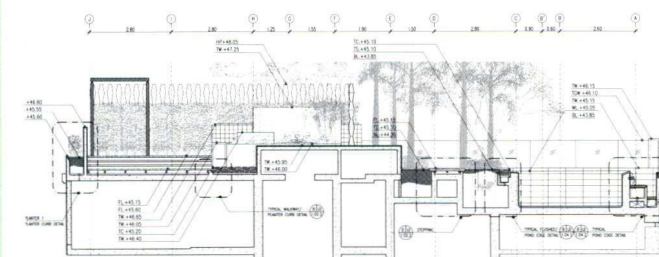


A LANDSCAPE SECTION 04

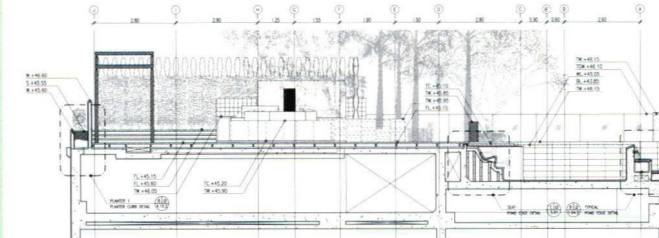


(B) LANDSCAPE SECTION 05

ALL STRUCTURAL, WATERPROOFING AND
C & M SERVICES SHOULD REFER TO
ARCHITECT'S AND ENGINEER'S DETAILS.



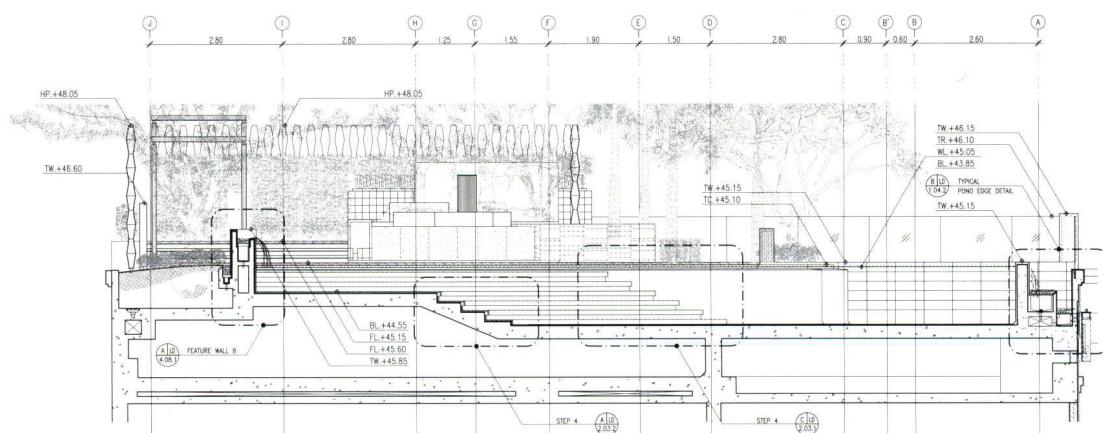
A LANDSCAPE SECTION OF



LANDSCAPE SECTION 01

NOTES:
ALL STRUCTURAL, WATERPROOFING AND
E & M SERVICES SHOULD REFER TO
ARCHITECT'S AND ENGINEER'S DETAILS





A LANDSCAPE SECTION 08
SCALE: 1:50

For the pool, originally, the architects provided a small rectangular pool in the middle of the roof. Because it had a great view here, T.R.O.P suggested them to create an L-shape pool, right at the edge of the building instead. With this design, it has one of the best views of Bangkok for the residents.

Sansiri 公司的 Prive 公寓是曼谷市中心的精品豪华公寓，以 40 岁以上的成功人士为客户群。因此，设计要求整洁而优雅，范围包括底层的花园和顶层的游泳池。

在底层花园，由于空间过小，设计师并没有按照 Sansiri 的要求建造一面实体墙把会客厅从公共区隔离，而是采用了灵活的特制雕塑墙。这个墙体由一系列的雕塑柱排列而成，柱子之间留有一定的空间，不仅使该区域空气流通，还使光线变得更富有趣味。在雕塑柱的下方，设计师特地设置了一个倒影池，使整个墙面的视觉效果更加出彩。

至于公寓的泳池，它原本被设计成一个小型的长方形泳池，位于顶层的中间，但考虑到那里视野开阔，景色优美，设计师建议把它变成一个沿着大厦边缘走向的“L”形泳池，给住户营造最佳的曼谷视野。

