



共創輝煌

Road To The Prosperous Tomorrow

中國 · 南陽

Nanyang. China

讓南陽

走向世界

讓世界

了解南陽

總編輯 張鵬
執行總編輯 王世群
總編審 劉元穎 李成軍 張封仁
總設計 冀泮壁
總策劃 梁長洲
編輯 冀泮壁 劉元穎 梁長洲 王世群
攝影 閔文然 王永泉 李書波 高巍 郭斗 劉曉
翻譯 謝澤生 陳勝安 李娟 吳長平
美術 冀泮壁 王勇
組稿 王金鈴 郭斗 張玲 何小飛 霍海振 曹青 張旭
周傳卿 馮光景 劉興闌 李松波 李璐 胡書冰 王群
承印 博達印務有限公司 香港創藝影版印刷中心
監印 王勇
編輯出版 南陽市工商業聯合會
南陽市總商會
《共創輝煌》編輯委員會



顧 問 王菊梅 王應山 王學聖

編委會主任 周志超

編委會委員 (按姓氏筆畫為序)

| | | | | |
|-----|-----|-----|-----|-----|
| 丁世顯 | 王 璋 | 王田海 | 王玉璞 | 王世群 |
| 王志遠 | 王英杰 | 王金鈴 | 王建民 | 王振江 |
| 王菊梅 | 王清華 | 王新之 | 王書愜 | 王學聖 |
| 王應山 | 水福源 | 牛振山 | 石文春 | 田向和 |
| 左德東 | 全王午 | 安身健 | 朱長青 | 朱雲申 |
| 杜 範 | 杜存堂 | 杜海濱 | 杜躍先 | 李子亮 |
| 李成軍 | 李秀蘭 | 李劍平 | 李軍彬 | 李海彬 |
| 李隆仁 | 吳章成 | 何新華 | 周志超 | 周明軍 |
| 周運生 | 金少峰 | 馬東升 | 馬鳳鳴 | 閻玉合 |
| 陳元增 | 陳冉楠 | 陳義生 | 郭慶之 | 袁晴超 |
| 唐光裕 | 高建華 | 孫同慶 | 孫君惠 | 許俊彥 |
| 梁長洲 | 張 鵬 | 張封仁 | 張瑞璋 | 張國偉 |
| 張香波 | 張金儒 | 張祖才 | 張清波 | 張新德 |
| 張嘉連 | 崔振亭 | 萬里光 | 賀國勤 | 賈崇蘭 |
| 路德群 | 楊文榮 | 楊明安 | 楊德明 | 楊德勝 |
| 鄭金周 | 翟保彬 | 齊文生 | 劉 耀 | 劉元穎 |
| 劉子雲 | 劉谷泰 | 劉宗林 | 劉振山 | 劉建國 |
| 劉群星 | 劉朝瑞 | 冀泮璧 | 燕振群 | 韓松森 |
| 魏山友 | 羅明禮 | | | |

開放的南



宛城新貌



中共南陽市委書記李清彪接見外賓



南陽梅溪賓館

南陽市雄踞豫西南，北靠伏牛山，東扶大別山，西依秦嶺，南臨漢江，是一個三面環山、南部開口的大盆地。四季分明，溫濕潤。土地肥沃，水源充足，礦藏豐富。適宜農、林、牧、副、漁各業和工業的發展，是中原大地上的一塊瑰寶。

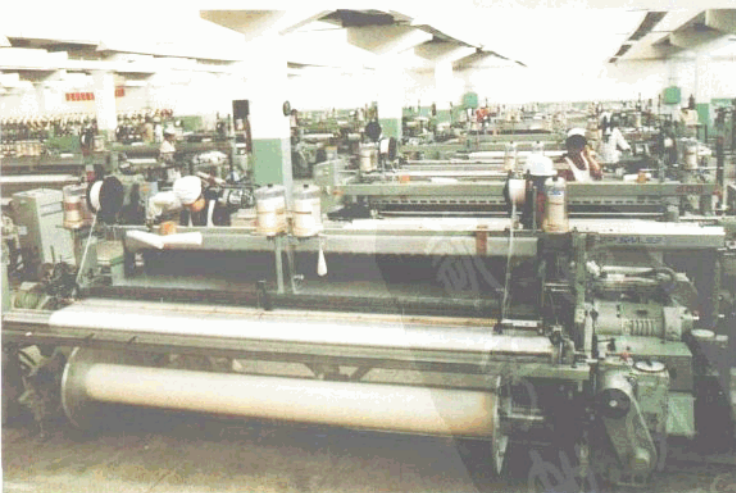
南陽市轄臥龍區、宛城區、鄧州市、鎮平縣、新野縣、唐河縣、桐柏縣、社旗縣、方城縣、南召縣、西峽縣、淅川縣、內鄉縣共13個縣(市、區)，總面積2.66萬平方公里，總人口達1000萬。

南陽有着悠久的歷史和燦爛的文化，早在戰國時期已是聞名全國的冶鐵中心，兩漢時，這裡“商遍天下，富冠海內”。東漢為光武帝發迹之地，故有“南都”“帝鄉”之稱。南陽物華天寶，英才輩出，唐代大詩人李白贊美：“此地多英豪，名播天地間”。天文學家張衡、醫學家張仲景、政治家儲藝亮、範蠡等載入史冊的政治家、科學家、文學家達兩千多人。

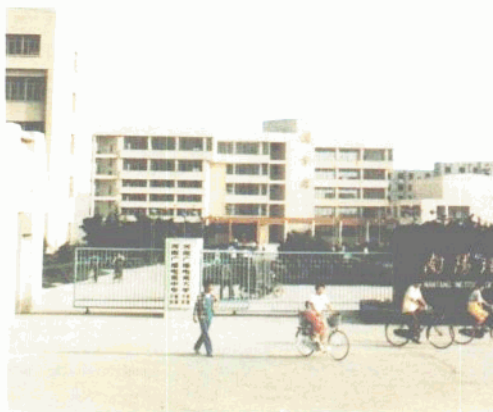
南陽有着優越的經濟地理位置：北臨煤海，南瀕長江，西靠川陝，東臨京廣大動脈，集枝鐵路縱貫南北，橫穿南陽的寧(南京)西(西安)鐵路即將動工，公路交織成網，波音737客機可直飛鄭州、廣州、深圳、北京、西安、上海等地。

南陽山川秀麗，名勝薈萃，是中原的旅遊勝地。區內有“南召猿人”和新石器時代遺址多處。夏商之後歷代古迹遍及各地。發現并挖掘恐龍蛋二千余枚，為世界之最。漢畫館、武侯祠和張衡、張仲景等名人墓地，年年吸引着數以萬計的中外遊人。此外，氣象萬千的寶天塹、太白頂國家自然保護區和丹江口水庫、鴨河口水庫等自然景觀，都是旅遊、療養的勝地。目前，全市名勝古蹟六十多處，是全國漢文化最集中的旅遊區之一。

建國四十多年來，特別是黨的十一屆三中全會以來，南陽農業經濟、工業生產、交通運輸、市場建設、城鎮面貌都有了迅猛發展。全市年產糧食40億公斤，棉花1億公斤，煙葉5000萬公斤，南陽是國家30多類定點農業商品生產基地。南陽工業形成以冶金、建材、化工、食品、奶糖、汽車配件等為主的多門類工業體系，主要產品達3000多種。



南陽絲織廠別針織機員織生產



陽歡迎您



小麥



棉花



南陽市人民政府市長符文朗接見外賓

南陽的郵電通信近幾年發展迅速，程控電話和無線信道的移動電話，可與國內各個城市和世界上180個國家和地區直接通話，電傳也可直達世界各地。

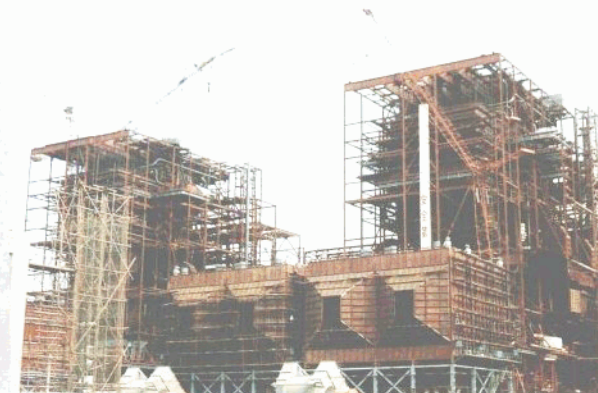
南陽電力資源充沛，除丹江口水電站和姚孟電廠供電外，還自建大小水電站300多處。鴨河口310萬千瓦伏火電廠和5萬千瓦熱電廠正在籌建，220千伏輸變電工程2座，110千伏變電站8座。這些建設可從根本上滿足本區經濟發展的需要。

近年來，南陽市積極參與國際市場的交換和競爭，培育了30多個單項出口基地，11大類280多個品種輻射五大洲50多個國家和地區。

為加快南陽經濟的發展，市委、市政府抓住機遇，優惠政策，多層次多渠道強力開展招商引資工作，近幾年越來越多的海外有識之士把目光投向南陽，已有美國、加拿大、英、日等十幾個國家和地區的商賈前來南陽觀光、旅遊、貿易、投資興辦企業。

一千萬南陽人民伸出熱情的雙手，願廣交四海朋友！

開放的南陽歡迎您！



正在施工中的310萬千瓦鴨河口發電廠



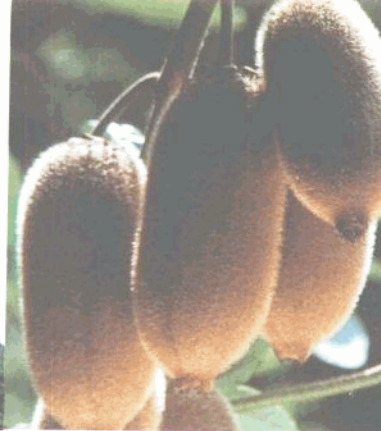
南陽理工學院



南陽商場



年產原油230萬噸的河南油田



攝猕猴桃

WELCOM TO THE OPENING CITY - NANYANG

Being grandly situated on the southern bank of Hanjiang River in southwestern Henan, Nanyang City is a large basin surrounded by mountains on three sides—the Funiu Mountains to the north, the Dabie Mountains to the east and Qiling Mountains to the west. The landscape is equally divided up by mountains, hills and plains. The climate is pleasant and marked by distinctive seasonal changes. The land is fertile with abundant water resources and rich deposits of mineral ores. Nature has blessed this treasure place in Central China Plain with all the favorable conditions for the development of agriculture, forestry, animal husbandry, sideline occupations and fisheries.

Nanyang City, with a total population of 10 million, an area of 26,600 sq. km., has under its jurisdiction two districts—Wolong and Wangcheng, a city—Dengzhou and 10 counties—Zhenping, Xinye, Tanghe, Tongbai, Sheqi, Fangcheng, Nanzhao, Xixia, Xichuan and Neixiang.

Long history and brilliant culture. Early in the Warring States Period, Nanyang had been known a national iron-smelting centre. In the Eastern Han and Western Han Dynasty, it had developed business relations all over the world and its wealth ranked the topmost in the China. It's here where Emperor Guangwu of the Eastern Han Dynasty rose to power, hence the name "Southern Capital" and "His Majesty's Hometown". The fertile land of Nanyang has also brought forth a vast continent of great men through the ages, it was reason enough for Li Bai, the famous poet in the Tang Dynasty, to sing "This place abounds in people whose fame has resounded between heaven and earth". From Chinese history books more than 2,000 of politicians, scientists and writers, such as astronomer Zhang Heng, medical saint Zhang Zhongjin, politician Zhuge Liang and great merchant Fan Li, etc., are natives of Nanyang.

Superior geo-economic location. Under the land to its north lies a vast ocean of coal deposits. The Yangtze River flows through its southern edge. Sichuan and Shaanxi are close by to the east. The trunk Beijing—Guangzhou Railway runs through its eastern fringe. The Jiaozuo—Zhucheng Railway passes through Nanyang from south to north and the Nanning—Xi'an Railway crossing Nanyang will soon break the ground. There's also an extensive highway network. Boeing 737 can now fly direct to Zhengzhou, Guangzhou, Beijing, Xi'an and Shanghai.

With picturesque landscape and a galaxy of scenic spots and places of historical interest, Nanyang is a tourism resort in Central China. The relics of "Nanzhao Ape Man" and of the New Stone Age in large number are discovered here, so are the cultural relics that date back to the Xia and Shang dynasties. There is no place in the world like Xixia County, where some 2,000 dinosaur eggs have been unearthed. The Museum of the Stone Engravings in the Han Dynasty and Wuhou Temple, the Tombs of Zhang Heng, Zhang Zhongjing, etc. are drawing millions of visitors from at home and abroad. Other natural tourist attractions and summer resorts include the spectacular Boitianman Natural Preserve Zone and Taibaiding Natural Preserve Zone, Danjiang Reservoir and Yahekou Reservoir. There are in total over 60 places of interest in Nanyang City. It's one of the most concentrated tourism attractions of the Han Dynasty Culture.



南陽大橋



南陽火車站



南陽機場

Nanyang airport

南陽飛機場



玉雕精品

In the last four decades since the foundation of the People's Republic of China, especially since the Third Plenary Session of the 11th Party Central Committee, Nanyang has taken on a new look of agricultural economy, industrial production, communication and transportation, market construction and city and town building with a great stride forward. Each year Nanyang produces 4 billion kilograms of grain, 100 million kilograms of cotton and 50 million kilograms of tobacco. Nanyang City is also a state-designated base for the production of more than 30 kinds of marketable farm produce. Its industry has taken shape a varied comprehensive system including metallurgical, building materials, chemicals, foodstuff, textile and auto parts and so on, which now produces more than 3,000 kinds of products.

Nanyang's post and telecommunication services in recent years have experienced a speedy development. With the help of programme-controlled and cordless telephones direct calls and faxes can be made in Nanyang to all cities in China and more than 180 countries and regions abroad.

Plentiful electrical energy. Besides the power supply from Danjiangkou Hydraulic Power Station and Yaomeng Power Station, there're 300 big and small sized hydraulic power stations, Yahekou Power Station with the capacity of 3,100,000 KW and a 50,000 KV thermal power station which are under construction. 220 KWV transmitting and transforming projects and 8110 KWV transformer stations. All these will provide enough power for the economic construction in this region.

In recent years, Nanyang has been actively involved in the exchange and competition in the international markets. It now operates over 30 individual exported-produce bases. More than 280 kinds of products classified in 11 categories are sold in more than 50 countries and regions.

In order to pace up the economic development of Nanyang City, the City committee and government catch every opportunity, adopt preferential policies and diversify the capital introducing channels with unspared efforts. Recently, more and more people of insight turn their eyes to Nanyang, businessmen from several dozens of countries and regions, such as America, Canada, Britain and Japan have come to Nanyang to visit, trade, invest and set up enterprises.

Ten thousand Nanyang people extend warm welcomes to friend all over the world.
Welcome to the opening city of Nanyang.



南陽漢畫館



南陽武侯祠

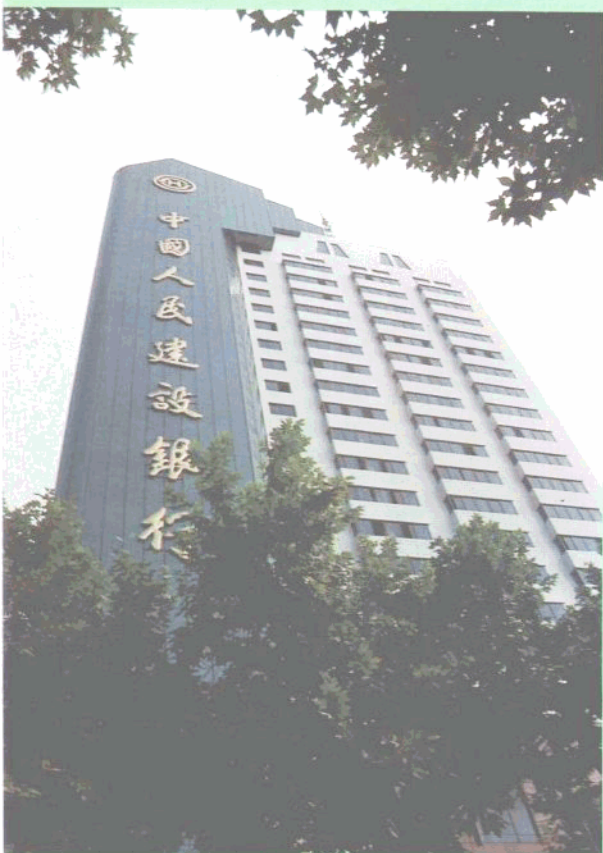


醫聖祠



花廳

南陽市建設委員會



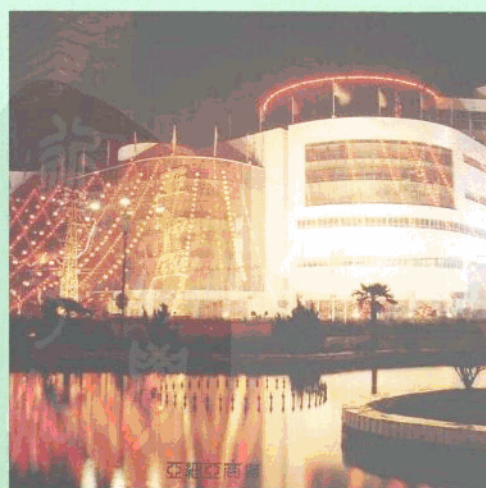
市建委主任 陳元增

南陽市建設委員會根據市委、市政府制定的“農業奠基、工業立市，科教興宛，開放帶動，城鄉一體，富縣富民奔小康”27字經濟發展戰略，堅持高起點科學做好南陽市總體規劃修編工作，強力推進“農業產業化、農村城鎮化”發展進程。按照建設現代化大南陽的戰略構想，南陽市的城鎮建設以市區為中心，東西南北交通干綫為經濟發展軸綫，星羅棋布的小城鎮為基礎，廣大農村為腹地，以點軸發展城鎮型式，向四周輻射，構建若干縣城為區域中心的城鎮群，實現城鄉一體化。據此，南陽市中心城區發展的目標是：2000年，中心城區人口達到55—60萬，建成區面積發展到60平方公里；2010年，中心城區人口達到80—90萬，建成區面積發展到90—100平方公里，全市城鎮化水平可望達到40—50%。

兩年來，市委、市政府把城市建設做為社會經濟發展的一個重要支撐點，加大投入。1995年投資0.9億元，順利完成了城市10項基礎設施重點工程，實現了城市建設第一個跨越；1996年在抓好“5橋1路”建設的同時，又把城市綠化美化工作作為城市基礎設施重點工程，各項建設工作進展順利，使城市建設與經濟社會發展同步共頻。



市工業路



亞細亞商廈



白河游览区 消陽橋

SPARE NO EFFORTS TO SET UP A FAMOUS CITY NANYANG CITY CONSTRUCTION COMMITTEE

In accordance with the economic development strategy of "Agriculture to be the foundation, Industry to be the backbone, To develop Nanyang science and education, To drive forward through opening, To combine city and rural area into one, To get every county and everyone rich and to be well-off" targeted by the City committee and government, Nanyang City Construction Committee abides by a high standard starting point to revise the overall planning of Nanyang City in a scientific way and carries the development process of "Agriculture industrialization, Countryside urbanization" a step forward with tremendous strength. According to the strategic plan of building Nanyang into a large modern city, the city proper is at the centre of Nanyang's urban construction; the main transportation lines crossing the west, east, south and north are the economic development axes, the scattered small towns are the foundation, the vast rural areas are the hinterlands; The city and towns development pattern adopts the policy of mixing spots with axes which will radiate in all directions; Several city and town groups or belts should be established and centered on the town which are at county level. By these steps, the aim of merging city and rural area into one will be finally realized. Therefore, the development target for the central city proper of Nanyang is: by the year of 2000, the population of it will climb up to 350,000—600,000, the finished construction area will reach 60 sq.km.; By the year of 2010, its population will be 800,000—900,000, the finished construction area will be 90—100 sq.km., the percentage of urbanization level of Nanyang City is expected to be 40—50%.

During the recent two years, the City committee and government have made the urban construction an important supporting point of the social economic development and put a big proportion of investments into it. The year of 1995 has seen an investment of 90 million yuan and the successful completion of the ten key infrastructural facilities projects, which realized the first stride of Nanyang's urban construction. In 1996, in addition to the construction of five bridges and one road, the urban afforestation and beauty plan is made the key projects of the urban infrastructural facilities. Every piece of construction work goes along smoothly. The urban construction and social economic development are seeing on the same track with the same speed.



人民北路



龍泉閣公園

南陽市科學技術委員會



市科委主任、黨組書記 朱傳義



南陽市科委內設9個科室，歸口管理3個副處級事業單位和7個科級事業單位，下設2個經營實體，干部職工130人。市科委長期堅持實施“科技興宛，教育為本”戰略，強化科技長入經濟實力，在推進全市經濟、社會持續快速發展中發揮了有效的作用。目前，全市各級各類科研推廣機構已發展到2000多個，其中全民科研機構46個，廠辦科研機構250個，民營科技型企業650多家；農村科技服務實體已發展到1.96萬個；70%的鄉鎮建立了科委；與20多個國家和地區的30多個科技友好組織開展了技術交流活動。近十年來，全市組織實施各類科技計劃1965項，取得市級以上重大科技成果獎1274項，累計創造經濟效益上百億元。

市科委衷心希望同國內外科技組織和有識之士建立長期良好的經濟技術合作關係。

地址：南陽市七一路140號

電話：(0377)3131514

傳真：(0377)3137675

SCIENCE AND TECHNOLOGY COMMISSION OF NANYANG CITY

There are 9 technical offices in Science and Technology Commission of Nanyang City. She administers 3 utility units in vice-department grade and 7 ones in section grade with 2 business bodies and 130 cadres and staff. Carrying out the strategy "Rejuvenating Nanyang with Science and Technology Based on Education", she has insisted in strengthening the force of developing economy with science and technology to play an effective role in pushing the rapid and continuous development of the economy and society of Nanyang city. Nowadays, there have been more than 2,000 various kinds of organizations spreading them, there are 46 state-owned scientific research organizations, 250 ones set by the factories and 650 private scientific enterprises. The science and technology servicing bodies in the countryside have reached 19,600, science and technology commissions have been set in 70% of the villages and the towns. She communicated with more than 30 friendly scientific and technological organizations in more than 20 regions and countries in the field of science and technology. For recent 10 years, she has organized to carry out 1965 items of various kinds of scientific and technological plans making 1274 items of prizes of great achievements in science and technology above the city grade creating totally economic benefit more than 10 billion yuan.

Science and Technology Commission of Nanyang City sincerely hopes to establish good and long-term relations of cooperation in economy and technology with the men of insight and science and technology organizations both at home and abroad.

Add: 140 Qiyi Road, Nanyang City.

Tel: (0377)3131514

Fax: (0377) 3137675



中國農業銀行

南陽分行



營業大樓一角



工作實行機械化

行長 鄭金周

AGRICULTURAL BANK OF CHINA NANYANG BRANCH

Rebuilt in 1979, Agricultural Bank of China Nanyang Branch has 14 subbranches at county, city and district level, 6 sub-units, 236 business departments, 200 saving centers, 4,456 farming funds agencies with 4,600 employees. So its capital force is strong with so many business points, lines and broad business coverage. The saving and loaning volume are 22 and 8 times of 1980 respectively.

The branch has not only dealt with the main credit businesses for agriculture, industry and commerce, but also new financial businesses, such as international credit, clearing, bond, lease and real estate, etc.. The service ranged from rural to city and from home to abroad. It has initially developed to be a state commercial bank with multi-functional, comprehensive, modern and all-round service. The office means developed towards modernization and electronization quickly. So far, the whole city has equipped 364 computers, the sub-branches at county, city and district level has all realized four-level (the Agricultural Bank of China, provincial, prefectural and county branch) computer integration within its circle.

By adhering to the policy of being tight and hard on both hands, the building of material civilization and spiritual civilization have proved to be successful. After being honoured as civilized unit by the provincial committee and government, it has one after another won the titles of national assisting the poor and pacifying the priority advanced unit, national finance trade advanced unit, honest building advanced unit and national agricultural fund trade ideological and political work advanced unit, spiritual civilization building advanced unit, safety operation advanced unit and so on.

中國農業銀行南陽分行於1979年恢復重建，下轄14個縣、市、區支行，6個二級單位，236個營業所（部），200個儲蓄所，4456個農金代辦站，擁有員工4600名。網點多，戰綫長，幅射面廣，資金實力雄厚。存、貸款分別是一九八〇年的二十二倍和八倍。

農業銀行南陽分行既辦理農、工、商主體信貸業務，又辦理國際信貸、結算、債券、租賃、房地產等金融新業務，服務範圍從農村到城市，從國內到國外，已初步發展成為多功能、綜合性、現代化、全方位金融服務的國家商業銀行。辦公手段現代化、電子化步伐不斷加快。目前全市已裝配計算機364臺，各縣、市、區行全部實現了系統內四級（總行、省、地、縣行）計算機聯網。

該行堅持兩手抓、兩手硬的方針，物質文明和精神文明建設獲得了雙豐收。繼省委、省政府授予文明單位后，又先後榮獲全國扶貧扶優先進集體、全國金融系統先進單位、廉潔建設先進單位和全國農村金融系統思想政治工作先進單位、精神文明建設先進單位、安全營運先進單位等稱號。

中國工商銀行 南陽分行



中國工商銀行南陽分行業務書記、行長 杜範

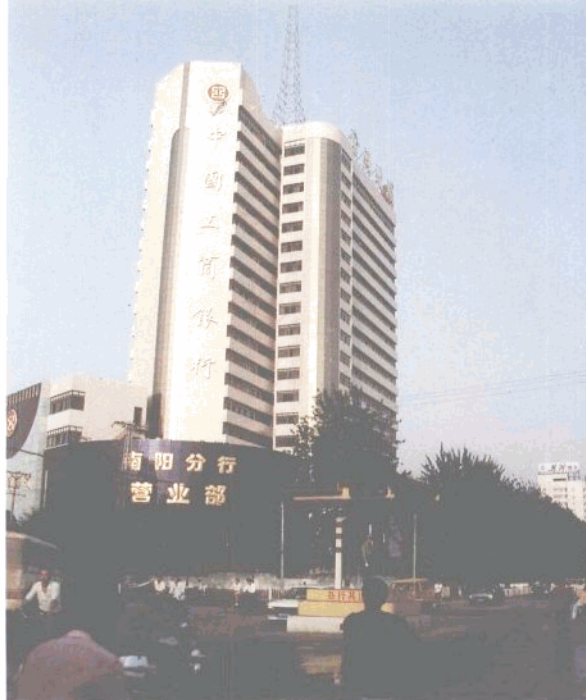


INDUSTRIAL AND COMMERCIAL BANK OF CHINA NANYANG BRANCH

Industrial and Commercial Bank of China, Nanyang Branch is a state comprehensive commercial bank with multi-functions. Its main business scope: handle the savings and deposits for city and town residents, enterprises and institutions; provide loans of floating capital and fixed assets for industrial or commercial enterprises; issue Peony Credit Card; manage the credit and development of real estate; capital remittance and clearing between different places; account transferring and cash clearing; carry out economic research and economic information consultation. Moreover, it opens many kinds of international financial business including: foreign exchange deposits, foreign exchange loans, clearing of import and export trade, foreign currency and foreign bill exchange, foreign exchange guarantee, payment upon receipt, spot and forward foreign exchange selling and buying for customers and foreign exchange clearing and selling. So far, all kinds of savings balance of the bank amount to 3.56 billion yuan; the loans balance, 3.5 billion yuan. The balance of savings and loans take up 37 per cent and 41 per cent of the total volume of finance trade in Nanyang City, respectively. The branch has also established stable and long-term credit relationship with 1,041 industrial or commercial enterprises of Nanyang, for which it has provided loans of RMB 44.7 billion yuan in total; set up business relationships on a commission basis with over 1,000 branches of over 200 international banks, for which it has provided foreign exchange loans of 35 million U.S. dollars, and handled foreign exchange clearings of 0.12 billion U.S. dollars.

The branch has unceasingly paced up the development of office modernization and business computerization. A comprehensive service system of running business comprehensively, handling business with computers, transmitting information automatically and communicating with modern means has began to take shape.

Add: No. 199, Gongye Road, Nanyang City, Henan Province.
Tel: (0377) 3134497



中國工商銀行南陽分行是綜合性多功能的國有商業銀行，主要業務範圍：辦理城鎮居民儲蓄存款和企業事業單位存款；辦理工商企業的流動資金和固定資產貸款；辦理牡丹信用卡和房地產信貸與開發業務；辦理異地資金進劃清算；辦理轉帳和現金結算；開展經濟調查和經濟信息諮詢工作。另外還開辦了多種國際金融業務，主要包括外匯存款、外匯貸款、進出口貿易結算、外幣及外幣票據兌換、外匯擔保和見證業務、代客戶辦理即期和遠期外匯買賣業務，辦理貼、售匯業務。目前，銀行各項存款餘額達到35.6億元，各項貸款餘額35億元，存貸款餘額分別占南陽市金融系統總額的37%和41%以上。銀行與全市1041家工商企業建立了長期穩定的信貸關係，累計發放人民幣貸款44.7億元；與國際上二百多家銀行的一千多個分支機構建立了代理業務關係，累計發放外匯貸款3500多萬美元，辦理外幣結算1.2億美元。

辦公現代化、業務電子化發展步伐不斷加快。初步形成了業務經營綜合化、處理業務電腦化、信息傳輸自動化、通訊聯繫現代化的綜合服務體系。

地址：河南省南陽市工業路119號
電話：(0377) 3134497





金海大廈

金海大廈是中國工商銀行南陽分行投資興建的，建築面積23700平方米，高21層，是豫西辛目前投資最多、建築面積最大、配置設備最先進、功能最齊全的綜合性大廈。大廈西半部分為寫字樓；大廈東半部分為中國工商銀行河南省豫西辛干部培訓中心，內設各類會議室、舞廳、KTV包房、客房、餐廳、康樂中心、桑拿浴等，可以為國內外社會團體提供人員培訓、食宿、康樂等全方位服務。

金海大廈下轄南陽市金海有限責任公司、南陽毛拓三生物科技有限責任公司和南陽市三野貿易有限責任公司。

法人代表、總經理：葛文輝

地址：南陽市新華西路與工業路交叉口

電話：(0377)3132201

傳真：(0377)3132201 轉

郵編：473063

拓三公司主要經營中藥醫學始祖王拓三先生的科研成果：人體細胞活性激活劑，主要有醫藥、保健品、化妝品三大類。本公司為貴國內市場的產品分為：“拓三”中藥系列“保健品”和“億化母”系列化妝品。保健品類有：平安軟膏、一生吞乳膏、老齡藥燭燭、化妝品類有：潔膚類、潤膚類、護髮類。

總經理：張士軍

地址：南陽市工業路199號

電話：(0377)3176199

JINHAI MANSION

Jinhai Mansion was built by Nanyang Branch of Commercial Bank of China, which about 21 floors' high and the building area about 23.7 thousand and square meter. The west section of the mansion is office rooms, and its east section is the cadres training center of south-west Henan Province. Commercial Bank of China, there are meeting-rooms, dancing-rooms, KTV rooms, dining rooms, guestrooms, entertainment center, Sauna bathrooms all of the rooms they have with facilities and topnotch services.

Jinhai Mansion is the general company which has three branch companies, they are: Jinhai Limited Company, Nanyang Yousan Biology and Technology Limited Company and Nanyang Sanyie Trade Liability Limited Company.

The General Manager: Nie Wengxia

Add: The cross-cross of Xinhua Road and Gongye Road, Nanyang City.

Tel: (0377) 3132201

Fax: (0377) 3132201

postcode: 473063



NANYANG YOUSAN BIOLOGY AND TECHNOLOGY LIMITED COMPANY.

Nanyang Yousan Biology and Technology Limited Company is a special agency to sell Yousan series cosmetics and health care product. Yousan B.T. Limited Company was originated by San Song Health-care Product Limited Company of Anhui Province and Nanyang Jinhai Responsibility Limited Company of Commercial Bank of China.

Yousan B.T. Limited Company is an agency of originator Wang Yousan, a balance-medical expert, their main products are: the body's cell latent energy activator, medicine, health-care product, cosmetic, Yousan traditional Chinese medicine series (health-care product) "YIHUAMU" series cosmetics, safe ointment, Yisheng Chun (Youthfulness) ointment, Mother's Good Fortune-Health-care product. The classifications of cosmetics: the skin cleaner, skin treatment, hair-nourishment.

General Manager: Zhang Shijun

Tel: (0377)3176199

Add: 199 Gongye Road, Nan Yang City



行黨組書記、行長 王書恆

中國建設銀行南陽市分行始建於1954年。其經營範圍：吸收公眾存款；發放短期、中期、長期貸款；辦理貼現、票據貼現；代理發行、兌付、承銷政府債券；買賣政府債券；同業拆借；提供信用證服務及擔保；代理收付款項；提供保管箱服務；經人民銀行批准的其它金融服務。

42年來，南陽分行全體職工拼搏進取，迅速發展，以優異的成績，確立了在南陽經濟建設中舉足輕重的地位。到1996年9月底，全行擁有各類經營機構200多個，從業人員2900多人，服務網點遍布各縣、市、區和主要鄉鎮。全行各類存款餘額25.5億元，各項貸款餘額17.6億元，成為南陽經濟建設的金融支柱。1988年以來，先後被建設銀行總行、河南省分行、原南陽地委、行署命名為“精神文明建設先進單位”，“思想政治工作先進集體”。

地址：南陽市新華西路銀星大廈

電話：(0377) 3224714

傳真：(0377) 3224714



CHINA CONSTRUCTION BANK NANYANG BRANCH

China Construction Bank Nanyang Branch was established in 1954. Its business scope is as follows: absorbing the public savings account; granting short-term, medium-term and long-term loan; settling accounts and discounting bills; acting as agent to issue cash and sell the government securities; buying and selling the government securities; calling money in the same trade; providing the service and guarantee of L/C; acting as agent to collect and pay; providing the service of safety-deposit box; other financial service through the approval of the People's Bank.

For 42 years, the staff of Nanyang Branch have strived hard to develop rapidly playing a decisive role in the economic construction of Nanyang City with excellent achievement. Till the end of September, 1996, the bank owned more than 2,000 various kinds of business organizations with more than 2900 staff members and service points spread in every county and city, industrial area and the main villages and towns. The balance of every kind of deposit reached 2.55 billion yuan and the balance of every kind of loan reached 1.76 billion yuan becoming the financial backbone of the economic construction in Nanyang City. Since 1988, she was named the titles "Advanced Unit in the Construction of Intellectual Civilization" and "Advanced Group in the Ideological and Political Work" in succession by China Construction Bank and her Henan Province Branch and the former Party Commission and the Administrative Office of Nanyang Prefecture.

Add: Silver Star Mansion, West Xinhua Road Nanyang City.

Tel: (0377) 3224714

Fax: (0377) 3224714



行領導在一線崗位指導工作



二聯廠PS版生產綫



銀行職工在銀星大廈信託部服務

南陽電力事業 電業局

RAPIDLY DEVELOPED ELECTRICAL INDUSTRY NANYANG CITY ELECTRICITY BUREAU

Located in the juncture of hydropower and thermal power between Henan and Hubei province of Central China power network, Nanyang Power Supply Area has an area of 30,000 sq. km with a population of over 10,400,000.

Nanyang City Electricity Bureau is a state big grade—two enterprise directly under Electrical Industry Bureau of Henan Province. The bureau shoulders the administration responsibility of power generating, transmitting, transforming, distributing and using for 13 counties (cities, districts) of the power supply area and two counties of Beiyang and Luanchuan which are out of the area.

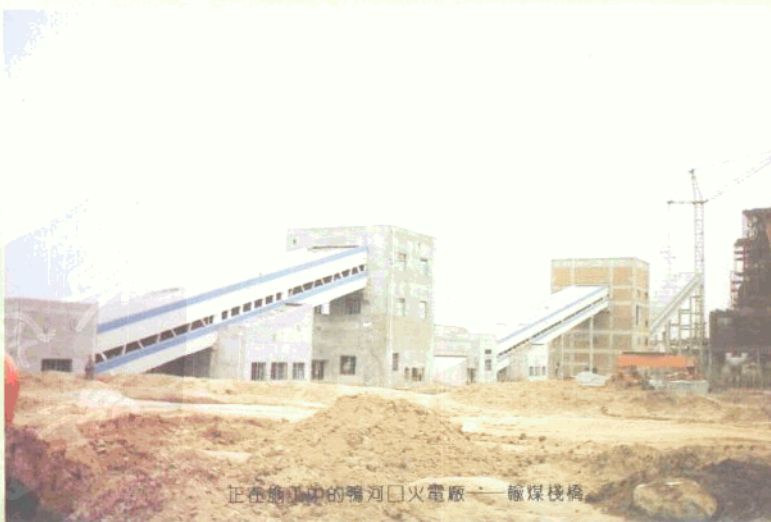
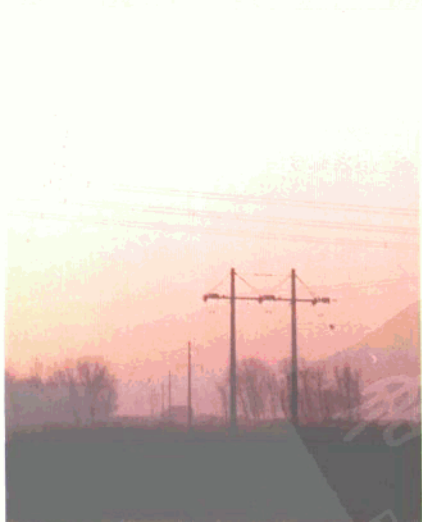
After 30 years of construction, Nanyang Power Supply Area has successively built 3724.59 km power transmission lines with the voltage level of 35 KV, 110 KV, 220 KV and 500 KV; 137 transformer substations with the voltage level above 35 LV, which formed a crossing power transmitting network linking and radiating with 15 counties (cities, districts) of and out of the area.

During the "Ninth Five—Year Plan" period, Nanyang City Electricity Bureau will put more money into the development of power network. One 500 KV, five 220 KV and seven 110 KV are under planning to further expand power supply scale. Nanyang City Committee and Government have chosen the power resources building as the breakthrough, the power plant building as the groundstone for Nanyang's prosperity, and started the construction of Yahekou Thermal Power Plant and Pushan Thermal Power Plant with planned total capacity of near 3 million KW by introducing external capital and enlivening internal capital. It's expected that they can be put into operation in 1997 and 1998, respectively. By the end of this century, Nanyang Power Supply Area will set up a main network frame made up of seven 220 KV transformer substations, of which the Yahekou Thermal Power Plant and Pushan Thermal Power Plant will be the power supporting resources. When the time comes, Nanyang power network is going to be a local power network with a yearly handling capacity of nearly 1,000,000 KW.

Glorious achievements rewarded for the arduous work. During the "Eighth Five—Year Plan" period, Nanyang City Electricity Bureau has won the first prize at the "Material and Spiritual Civilization Construction Competition" organized by Electrical Industry Bureau of Henan Province in 4 consecutive years; been appraised as "Civilized Unit" and "Spiritual and Material Civilized Unit" by Central China Power Network Bureau, Electrical Industry Bureau of Henan Province, Nanyang City Committee and Government in 9 consecutive years; "Excellent Service Unit" by Electrical Industry Bureau of Henan Province. With the enterprise spirit of "Unity, Objective, Pioneering and Service", Nanyang City Electricity Bureau has made remarkable contribution to the economic construction of Nanyang.



正在施工中的鴨河口發電廠——儲灰罐



正在施工中的鴨河口火電廠——輸煤棧橋

步入信息時代的南陽市郵電通訊



局長 劉宗林

南陽市郵電局轄全市13個縣（市、區）郵電局，擁有員工4700余名，是豫西南通信樞紐。

近幾年來，郵電局依靠科技進步，大膽引進外資，使郵電通信事業跨上了通向世界的信息大道。現在，南陽郵電擁有程控交換機容量27.56萬門，移動電話容量75000門，無線尋呼容量50萬門，長途電話達4772條，數字光纜2280公里。郵電服務網點4300多個，郵運車輛114部，郵路長25764公里，實現了城鄉通信一體化。郵電業務種類有市話、國內國際電話、傳真、移動電話、無線尋呼、電報、電子信箱、數據交換、可視電話會議、168信息、郵儲、集郵、特快專遞、報刊發行、機要、函包運、鮮花禮儀等幾十種。為南陽經濟發展鋪設了高速信息公路，為南陽社會發展做出了積極貢獻。



郵電大樓

NANYANG POST AND TELECOMMUNICATIONS ENTER INTO INFORMATION ERA

Nanyang Post and Telecommunications Bureau is a competent authorities which can control Nanyang 13 counties, the staff members about 4.7 thousand, it is the telecommunications center of southwest Henan.

Nanyang Post and Telecommunication Bureau depends on advanced science technology and import foreign capital to improve their service quality and instruments, under the staff members effort, Nanyang post and telecommunication cause is keeping pace with current of the world.

Now, Nanyang post and telecommunication can control with 275.6 thousand telephones, among them, mobile telephones about 75 thousand, wireless BP about 500 thousand, long-distance call about 4.772 thousand, digit cable about 2.28 km, the branches of Nanyang post office about 4.3 thousand, postal car about 1219, postal route about 25.764 kilometer's long. All kinds of postal and telecommunications service are: local telephones, domestic and international telephones, fax, mobile telephones, wireless BP, cable, electron letter boxes, divided groups exchanges, digit exchanges, view TV meeting, 168 information, postal deposit, stamp collecting, worldwide express mail service, the press publishing, confidential, flowers rite It has paved a information lghway for Nanyang's economic development and made great contributions to Nanyang's social developments.

通訊工作室



南陽市

審計局



局長孫君惠

南陽市審計局自1983年組建以來，嚴格按照《憲法》、《審計法》賦予的職責，致力於為發展南陽經濟服務，強化審計監督職能，審計領域不斷擴展，執法力度逐步增強。

十多年來，全市審計系統共完成審計單位（項目）9905個，審出違紀金額7.8億元，減少財政撥款2501萬元，追還侵占挪用資金2967萬元；幫助企業清理三角債167起，為企業追回拖欠資金2066萬元，促使39個企業扭虧為盈，120個盈利企業提高經濟效益。社會審計從無到有，目前全市有14個社會審計機構，完成審計25449項，內部審計機構540個，已形成網絡。

市審計機關連續13年位居全省審計系統前列，連續5年保持省級文明單位稱號，連續8年保持文明系統稱號，連續三次獲得“全國審計機關先進集體”稱號。



團結務實的領導班子

NANYANG CITY AUDIT BUREAU

Since the foundation of the Nanyang City Audit Bureau, it has devoted itself to the service for the development of Nanyang economy, strengthen the monitoring function of audit strictly complying with task authorized by the Constitution and Audit Law. The auditing scope has been gradually expanded, and the enforcement dynamics has been strengthened.

In the past decades, the whole audit system in Nanyang City have in total finished 9,905 auditing items, found out discipline breaching funds 78 million yuan, lessened financial allocation 2,501 million yuan, saved and returned misappropriate public funds 2,967 million yuan; helped the enterprises to clear triangle debts 167 pieces, got back default funds 2,066 million yuan, promoted 39 enterprises become profit making and 120 enterprises improve their economic benefits. The social audits have experienced non-existence to flourishing. At present, there're 14 social audit organs in Nanyang City, which has completed 25,449 audit items; and 540 internal audit organs which has formed an auditing network.

The audit authority of Nanyang City has ranked first class in the provincial audit system for 13 years, was honored as Civilized Unit in Henan Province in 5 consecutive years, Civilized System in Henan Province in 8 consecutive years and the "National Audit Authority Advanced Collective" in 3 consecutive times.

