



Show Flat II

European-Style Rurality

样板间 II —— 欧式田园

深圳市创扬文化传播有限公司 编
室内公共空间杂志社



华中科技大学出版社

<http://www.hustpas.com>

Show Flat II

European-Style Rurality

样板间 II —— 欧式田园

深圳市创扬文化传播有限公司 编
室内公共空间杂志社



华中科技大学出版社

<http://www.hustpas.com>

图书在版编目 (CIP) 数据

样板间II: 欧式田园 / 深圳市创扬文化传播有限公司 编.

—武汉: 华中科技大学出版社, 2010. 7

ISBN 978-7-5609-6410-2

I. ①样… II. ①深… III. ①住宅—室内装饰—建筑设计—图集 IV. ①TU241-64

中国版本图书馆CIP数据核字(2010)第136358号

样板间 II —— 欧式田园

深圳市创扬文化传播有限公司 编
室内公共空间杂志社

出版发行: 华中科技大学出版社 (中国·武汉)

地 址: 武汉市珞喻路1037号 (邮编: 430074)

出 版 人: 阮海洪

责任编辑: 张 蕊

书籍设计: 刘 丹

封面设计: 刘 丹

责任监印: 马 琳

印 刷: 利丰雅高印刷 (深圳) 有限公司

开 本: 965mm×1270mm 1/16

印 张: 20

字 数: 160千字

版 次: 2010年7月第1版

印 次: 2010年7月第1次印刷

书 号: 978-7-5609-6410-2 / TU·903

定 价: 268.00 (USD 68.00)

销售电话: (010)64155566 (兼传真), (022)60266199 (兼传真)

邮购电话: (010)64155588-8825

网 址: www.hustpas.com

(本书若有印装质量问题, 请向出版社发行科调换)

Preface



For the majority, European style equals to luxury; however, when people pursue for a vintage and elegant style, they also hope to be closer to nature, and enjoy a free and easy life style. European countryside style fits for this theme perfectly. Its classical flavor is tinted with cozy and romantic vibe, merging with nature. Besides, European countryside style allows people to feel relaxed and easy, and this is achieved by western European design technique as well as elegant expressive method. The design strives to bring people back to nature, with permeated natural flavor in the space. Some delicate ornaments are incorporated to embody an easy and comfortable living ambiance that the owner pursues. Countryside style promotes “returning to nature”, and it aesthetically promotes “natural beauty”, which holds the belief that only when people value nature and abide to the natural laws can they have a balance between physical and mental life in the ever-changing modern society. Therefore, countryside style strives to present the easy pleasures of countryside life.

European countryside style reflects a cozy and comfortable life. The various colors embody colorful life. Most people who are too busy with work get tired of the hustle and bustle in metropolises and long for the peace of countryside, however, they can't all leave city for countryside due to the stress of reality, so they begin to seek a balance between them, and home becomes the best harbor. A small door can prevent the weariness and troubles outside; while inside, it's a pleasing garden belonging to us.

Flower is usually considered as a symbol of countryside style. If you want to create a typical European countryside home interior, you should first select your favorite flower-patterned wallpaper, and decorate the wall with it, so that the home space will appear in a unity. Besides, the widely use of the same kind wallpaper saves cost and trouble than using several kinds of wallpaper. In order to match the countryside style, flower-patterned fabric sofa and beddings are selected. The sofa with big flower patterns allows the living room to be magnificent and generous, while the bedding with little flower patterns reveal the coziness of a home.

If flower is the symbol of countryside style design, then white furniture would be the major element of minimalist European style. Traditional countryside style usually adopts log-colored furniture, but actually, it only fits for large house like villa. For example, a house with a limited area of 100 square meters, if log-colored furniture were widely used in the space, the interior would be depressive. Therefore, a set of pure white furniture is used to relieve the visual impact and people will feel more comfortable.

Yu-yi Lin

Asia-Pacific Jiayi Interior Design Co, Ltd.

序

在大多数人的眼里，欧式是奢华的代名词。但是，人们在追求复古、典雅的同时，还流露出对自然的向往，向往那种恬淡、洒脱的生活方式。欧式田园风情正迎合了这一理念，古典中透露着温馨、浪漫，与自然一体。欧式田园设计可以使你体验到悠闲自在的感觉。运用西欧设计手法的大气，配合高雅格调的表现手法来体现。设计上讲求心灵的自然回归感，给人一种扑面而来的浓郁气息。把一些精细的后期配饰融入设计风格之中，充分体现业主所追求的一种安逸、舒适的生活氛围。田园风格倡导“回归自然”，美学上推崇“自然美”，认为只有崇尚自然、结合自然，才能在当今高科技快节奏的社会生活中获取生理和心理的平衡。因此田园风格力求表现悠闲、舒畅、自然的田园生活情趣。

欧式田园风格可以说是温馨生活的写照。多种色彩的搭配，象征生活的丰富多彩。忙碌的现代人厌倦了都市的喧嚣，渴望乡村的宁静，可是现实的压力又不可能让所有人都能够真正地远离都市，于是人们开始在生活中寻求二者的平衡，家是他们最好的港湾。小小的一扇家门将都市人的疲惫挡在外面，门里是一片独属于我们的惬意田园。

花朵可以说是田园风光中的标志性符号。如果你想打造一个典型的欧式田园风格的家，最先办的事就是选一款你喜欢的花朵图案壁纸。将家里的每一面墙都贴上壁纸，而且花色也十分相近，这就使得家里的整体氛围十分统一。而且一种壁纸大面积使用可以减少拼接的损耗，这些选择多种花色要经济许多。花朵布艺沙发和花朵床品都是为搭配田园风格而精心挑选的。大花的沙发可以让客厅显得大气，小花的床品则透出家的温馨。

如果说花朵是田园风格的设计符号，那么白色家具就是简欧风格构成的最主要元素。传统的田园风格喜欢使用原木色系的家具，但是那更适合别墅等大户型。例如一个只有100平方米的房子，如果大量使用木色家具会使居室显得很压抑，所以如在设计上搭配了一整套纯白色家具，这样视觉上就会舒服很多。

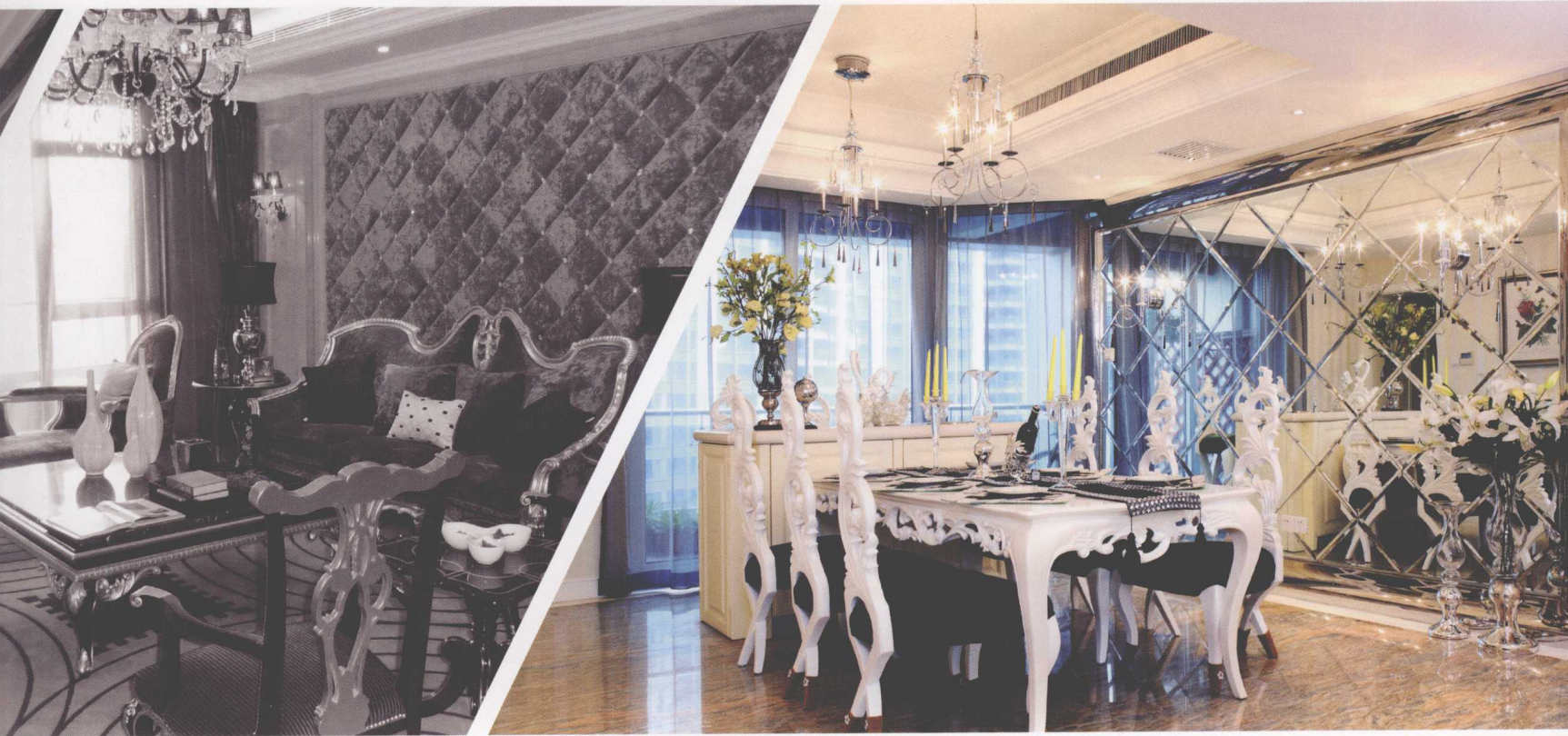
林煜毅

亚太嘉毅室内设计有限公司



contents 目录

- 006 Changsha Guanghui Lanting View No.1, 1-B Show Flat 长沙广汇兰亭峰景1期1-B样板间
- 012 Changsha Guanghui Lanting View No.2, 2-C Show Flat 长沙广汇兰亭峰景2期2-C样板间
- 018 Changsha Guanghui Lanting View No.2, 3-1 Show Flat 长沙广汇兰亭峰景2期3-1样板间
- 026 Changsha Guanghui Lanting View No.1, 1-F Show Flat 长沙广汇兰亭峰景1期1-F样板间
- 030 Changsha Guanghui Lanting View No.2, 3-3 Show Flat 长沙广汇兰亭峰景2期3-3样板间
- 036 Yiyan Dai Jiaoyu 旖旎待蕉雨
- 044 Transparent Sunshine and Sea 玲珑阳光海
- 052 Happy Gardener 幸福的园丁
- 064 Accompanied by Wind and Cloud 依风弄云影
- 072 Provence Facing toward North 南普罗旺斯向北
- 082 Bandao Guoji 半岛国际
- 090 Romantic Classicism 浪漫复古风
- 102 Zhonggong International Mansion 中庚国际华府
- 110 Yihui Jiayuan Show Flat - French Countryside Style 颐慧佳园样板房——法式田园风格
- 116 Show Flat of Building No.2, Junting Oriental Pearl 东方明珠君庭2幢样板间
- 126 European Style 欧陆风情
- 132 Austral Pearl 南国明珠29幢1501
- 140 Sunshine Seacoast Duplex Show Flat 阳光海岸复式样板间
- 148 Jiahe Shengshi Show Flat 家和盛世样板间
- 156 Zhongheng.Haihui Yuan Show Flat 中恒·海晖园样板间
- 160 Sansheng Guoling 三盛果岭



- 168 European Neo-classism 欧式新古典
- 174 Balmy Garden in the East 东方润园
- 180 Fei Style Home 非风格主义家
- 186 Understated Luxury of Dragon Phoenix Rose Garden 龙凤玫瑰园低调奢华
- 194 Nanyuan International Garden – Meeting “Victoria” by Chance 南苑国际花园——邂逅“维多利亚”
- 200 JiaBao Jing Garden in Rui'an City 瑞安嘉宝景苑
- 208 Century City nearby Xiang River I 湘江世纪城I
- 214 Century City nearby Xiang River II 湘江世纪城II
- 220 Yu Ju 域居
- 228 Flamingo Private Residence in Chongqing 重庆弗莱明戈私宅
- 236 Chongqing Shanyujian Allan Poe Show Flat 重庆山语间爱伦坡样板间
- 246 Shenzhen. New Coastline 深圳·新岸线
- 252 Hairun Honor 海润尊品
- 260 Hunan Changsha Rongke Sanwan Yingchi Residence 湖南长沙融科林宅
- 268 Ningbo Junyue Garden Residence 宁波君悦花园应宅
- 272 Pingzhen Lin Mansion 平镇林公馆
- 278 Neo – Classical Show Flat 新古典样板间
- 288 Shui'an Xingcheng Garden Villa 水岸星城花园洋房
- 296 New Crazy Housewife 新疯狂主妇
- 302 Qinglin Bay 青林湾
- 308 Show Flat No.5 of Liyang Mansion in Shanghai 上海溧阳华府5号样板间
- 314 Xiangjiang Pearl in Fuzhou 福州市香江明珠



长沙广汇兰亭峰景1期1-B样板间



设计单位 | 杨大明设计顾问事务所

施工单位 | 湖北一嘉设计装饰工程有限公司

设计师 | 杨大明 陶金丽

项目地点 | 长沙市

建筑面积 | 40平方米

主要材料 | 彩色乳胶漆、饰面板、复合地板、墙贴

摄影师 | 吴辉

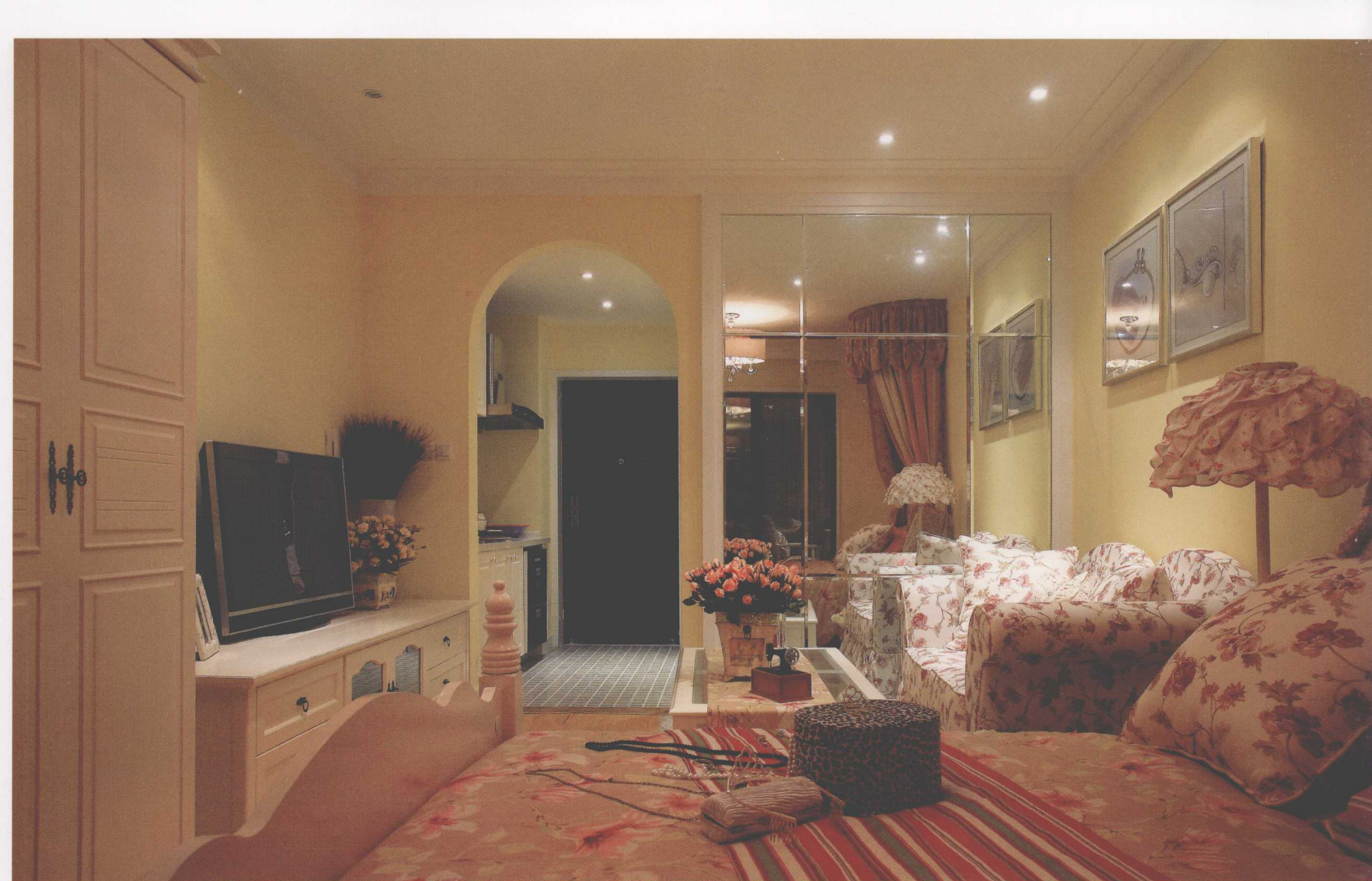
The design for this project aims to let people feel going back to nature, and it gives off a strong natural flavor. Some delicate ornaments are used and integrated into the style, which fully show

an easy, comfortable living atmosphere the owner pursues for. In the living room, various kinds of textiles with little flower patterns and hangings are widely used, the luxurious outline of furniture and the

exquisite droplight complement each other. The wall is decorated with murals, and the vases also highlight it. Besides, the flowers and green plants scattered in the space embellish it, too.







本案设计讲求心灵的自然回归感，给人一种扑面而来的浓郁气息。把一些精细的后期配饰融入设计风格之中，充分体现设计师和业主所追求的一种安逸、舒适的生活氛围。这个客厅大量使用碎花图案的各种布艺和挂饰，欧式家具华丽的轮廓与精美的吊灯相得益彰。墙壁上也并不空寂，壁画和装饰花瓶都使它增色不少，同时，空间中到处可见的鲜花和绿色植物也是很好的点缀。









设计单位 | 杨大明设计顾问事务所

施工单位 | 湖北一嘉设计装饰工程有限公司

设计师 | 杨大明 王蕾

项目地点 | 长沙市

建筑面积 | 82平方米

主要材料 | 微晶石、墙纸、实木地板、乳胶漆、软包、紫镜

摄影师 | 吴辉

The design for this project adopts improved classical style. Both the layout and each detail of the space are carefully designed. Some are simple while others are elaborated. The delicate ornaments and marquetry inlay gold leave people with deep impressions. On the one

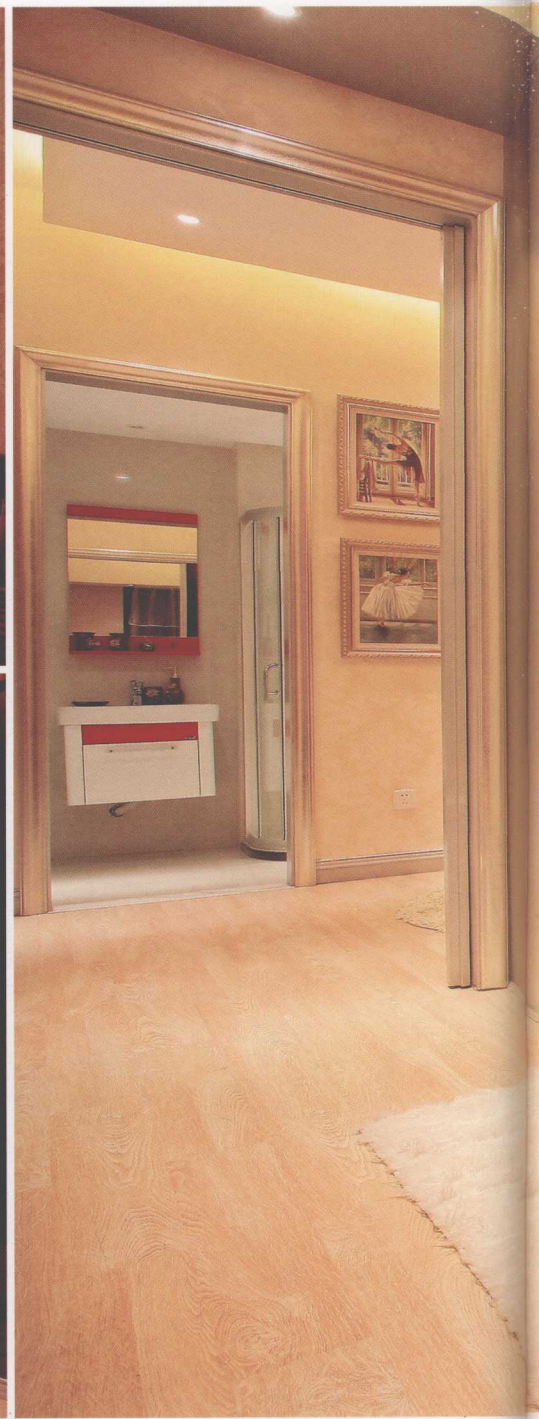
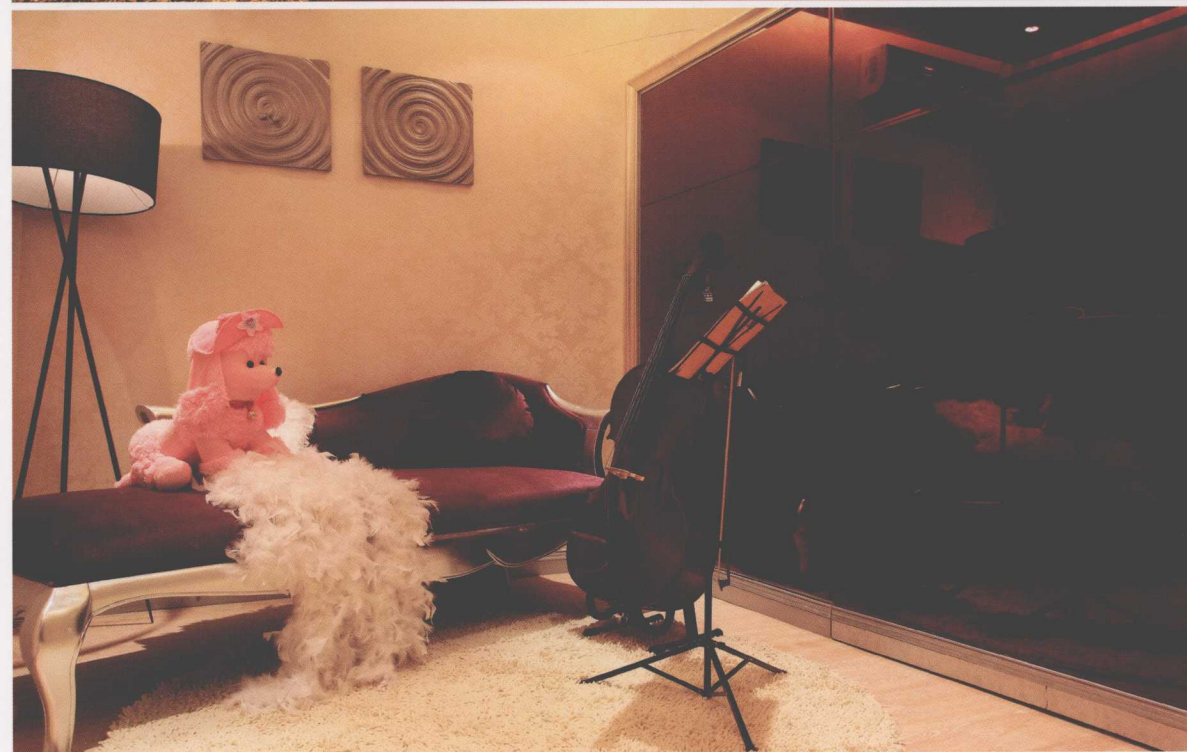
hand, color and material hole space i Garnet, golden and yellow set the color tone, matched with a little white, so the space appears bright and noble, and people would find the space open and spacious.

In the bedroom, neo-classical lightings

matched with rococo dresser, classical lace drape of bedside, added with classical ornaments such as amoretto and a baroque oil painting so that people would feel the graceful and magnificent features of classism.







本案设计风格被定义为改良后古典主义风格。空间设计从简单到繁杂、从整体到局部，精雕细琢，镶花刻金都给人一丝不苟的印象。一方面保留了色彩、材质，同时又摒弃了过于复杂的肌理和装饰，简化了线条。

暗红、金色与黄色是空间的主色调，糅合了少量白色，使空间色彩看起来明亮、大方，同时也给人以开放、宽容的非凡气度，让空间丝毫不显局促。

在卧室里，新古典主义的灯具配以洛可可式的梳妆台、古典床头蕾丝垂幔，再摆上古典样式的装饰品，如小爱神——丘比特画像，或挂一幅巴洛克时期的油画，让人们体会到古典的优雅与雍容。



