



唐艺设计资讯集团有限公司 编

Space Style Decoration

空间 · 风格 · 配饰



天津大学出版社
TIANJIN UNIVERSITY PRESS

Space Style Decoration

空间 · 风格 · 配饰

唐艺设计资讯集团有限公司 编



天津大学出版社

TIANJIN UNIVERSITY PRESS

图书在版编目 (CIP) 数据

空间·风格·配饰 / 唐艺设计资讯集团有限公司编.

—天津: 天津大学出版社, 2010.7

ISBN 978-7-5618-3523-4

I. ①空… II. ①唐… III. ①室内设计: 空间设计 IV. ①TU238

中国版本图书馆CIP数据核字 (2010) 第101151号

责任编辑: 油俊伟

流程指导: 陈 玲

文编指导: 何小兰

翻 译: 刘 兴

装帧设计:  DESIGN / QI 设计国
Mob: 13725295235 www.qi-jia.com

出版发行: 天津大学出版社

出 版 人: 杨 欢

地 址: 天津市卫津路92号天津大学内 (邮编: 300072)

电 话: 发行部: 022-27403647 邮购部: 022-27402742

网 址: www.tjup.com

印 刷: 上海瑞时印刷有限公司

经 销: 全国各地新华书店

开 本: 230mm×300mm

印 张: 20

字 数: 276千

版 次: 2010年7月第1版

印 次: 2010年7月第1次

定 价: 280.00元; USD 55.00

PREFACE

前言

At present, many people are not satisfied with the simple making up of decorative materials while decorating their houses, they hope that their homes could present strong individual style and flavor. The accessories design attracts more and more attention in the field of space design.

With the rapid development of family adornment market, the life philosophies of consumers are mature day by day, they pursue the individualized home decorations rather than the complicated design, fussy hardware decorations and complete facilities. Therefore, accessory consumption has become an emerging market gradually. The popularity of the concept of "finishing disvalued, decoration valued" subdivides the market of space design. Designers plan and coordinate the 7 kinds of home furnishings on the basis of their strong feeling for color, texture and style and their aesthetic for arts and fashion. Designers also make some overall design and details performance for beautifying the living environment, which are acceptable by consumers.

Space · Style · Decoration collects the excellent design works, providing designers with the newest and practical information and sample on the respects of space layout, style expression and accessories design.

As a book paying attention to the display for accessories designs in different styled space, this book does not only include the information for space layout and style design like other normal design books, but also introduces the design information for accessories, such as furniture, lighting, painting, home textile, floriculture, green plant and furnishing and other relative pictures. The editorial way of "style space + accessories design" in this book highlights the features of accessories as well as the integrity of space.

随着个性风格家装理念的出现,很多人在家庭装修中已经不满足于空间的设计和材料的堆砌,而是期望自己的居室能够表现出强烈的个性风格和情趣。配饰设计逐渐在空间设计的领域引起了人们更多的关注。

伴随着装饰市场的迅速发展,众多消费者的生活理念日渐成熟,他们不再追求在装修时进行复杂的设计、搞烦琐的硬件装修、要求设施的一步到位,而是转向用家居饰品彰显自己的个性。配饰消费由此逐渐成为一个新兴市场。“轻装修重装饰”理念的流行,细分了空间设计的市场,而设计师运用自己对色彩、质感和风格的整体把握能力以及对艺术、时尚的综合审美能力,将家具、灯饰、挂画、布艺、花艺、绿植、陈设品7大类家居产品进行统一规划协调,为美化家居环境做出整体设计和细节执行,这种行为也日益受到越来越多消费者的青睐。与此同时,市场也对设计师的配饰设计能力提出了更高的要求。

《空间·风格·配饰》的面世,则是对这一需求的及时回应。本书通过优秀的设计案例,在空间布局、风格表现与配饰设计方面为设计师提供最新且实用的资讯和范本,这也是本书最大的卖点。

作为一本侧重于展示不同风格空间内配饰设计的室内图书,本书的内容编排,除具备普通样板房设计类图书的空间格局及风格设计信息外,还兼具“家居配饰”设计的内容,如家具、灯饰、挂画、布艺、花艺、绿植、陈设品等相关配饰图片及配饰设计说明。本书“风格空间+配饰设计”的编排方式凸显“配饰”特色,同时兼顾空间整体性,使其既具有空间图书的特征,又有配饰设计参考的价值。

CONTENTS 目录

NEO-CLASSICAL STYLE

新 古 典 主 义



B-TYPE IN NO.1 HAIRVN PARK ROAD FUZHOU

福州海润公园道1号B户型

The living space with exotic feeling and modern classical style represents a kind of elegant aesthetics.

带有异国情调的古典主义，配以现代的居室风格，整体设计无不透露着一种优雅的居住美感。



PARIS METROPOLIS

巴黎都市

"Low-key luxury and implicit romance" — this subject is expressed incisively and vividly in the interior design of "air villa" in Paris Metropolis.

“低调的奢华加含蓄的浪漫”——这一主题在巴黎都市“空中别墅”居室的设计中得以淋漓尽致地发挥。



VILLA IN JIULONG NO.1, HANGZHOU

杭州九龙一号别墅

Pure and elegant light gray, natural strip patterns, materials full of texture, all of which reflect the mixed flavor of classicism and modernity.

纯粹而雅致的淡灰色彩、自然的条形几何图案、充满质感的材料，体现出古典与现代糅合的韵味。



SHANGHAI WESTWOOD

嘉华慧芝湖

Design and fashion are inseparable. The space featuring white new classical style of Shanghai Westwood duplex apartment is the perfect expression for fashion trend.

设计与时尚密不可分，这次为“上海慧芝湖公寓”复式住宅打造的白色新古典风格的空间，是对潮流的完美演绎。



SAMPLE HOUSE OF VILLA IN CHANGPING VANKE CITY

昌平万科城别墅样板房

The designer does not get bogged down in the concept and style, but hunts for the space effect from the building's feature and creates a natural neo-classical space atmosphere.

设计师并未拘泥于概念和风格，而是从建筑本身的特质开始探求空间效果，打造出随性而为的新古典空间氛围。



TRIUMPHANT

凯旋枫丹

This case adopts the classic contrast between black and white, which mixes the modern and traditional elements so as to express the retrofeeling of trend.

本案将经典的黑白对比设计重新搬上舞台，糅合现代与古典元素，表现出时尚的复古风情。



SAMPLE HOUSE OF M1-TYPE VILLA IN THE WONDER CITY, SHUNDE

顺德博澳城M1型别墅

This is a villa with neo-classical style; a space with fashion, luxury and elegance.

本案是定位于新古典风格的别墅户型，是一个拥有时尚、奢华、典雅的品位空间。



C-TYPE SAMPLE HOUSE IN ZHONGYUAN MINGDU

中原名都C户型

This space expresses the low-key yet luxurious classical flavor by deep colors, modern materials and design languages.

空间以深沉的色彩、现代的材质与设计语言来演绎一种低调奢华的古典气质。

NEO-CHINESE STYLE

新 中 式 风 格



CHENGDU PHOENIX CITY

成都凤凰城

Derived from the concept of Chinese ink paintings "integrating Chinese and Western arts, combining ancient and contemporary characteristics", the design utilizes the contrast between black and white to create the subtle elegance of oriental culture.

设计源于中国水墨艺术“折中中西、融会古今”的理念，运用黑与白的明暗对比营造出东方文化的含蓄优雅。



2# SAMPLE HOUSE IN JI NAN ZHONGQI TASHAN

济南中齐他山2#样板房

The open space pattern and Chinese-style design language create the free and fresh space ambience.

开放的空间格局，富有中式风情的设计语汇，打造出自由、清新的空间氛围。



JI NAN ZHONGQI TASHAN VILLA

济南中齐他山别墅

The designer expresses the quality life of great China and shows the traditional fashion by a special way in this 4-storeyed villa.

设计师以独特的方式，在这套4层别墅里诠释“盛世中国”的品质生活，完成了对传统的时尚表达。



A1-TYPE SAMPLE HOUSE IN VANKE JINYU DONGJUN

万科金域东郡A1

This Chinese-style space is filled with traditional humane spirit, expressing the warm and charming feeling.

这个具有中式风情的空间，流露出传统的人文精神，显得温暖且清秀可人。



T6-102 VILLA IN SHENZHEN CITIC MANGROVE BAY

深圳中信红树湾T6-102别墅

This case brings the traditional Chinese elements into the modern space, which adopts the technique of "landscape borrowing" to present the strong neo-Chinese style.

本案将传统中式元素引入现代空间格局，采用诸多借景手法，打造出浓郁的新中式风情。



SAMPLE HOUSE OF T1 VILLA IN JIUDING SEASHORE IMPERIAL GARDEN

九鼎滨海御庭T1别墅

The Chinese-style nobility and modern elegance are integrated in the style of neo-Orientalism, presenting the aristocratic life taste and style.

以中式高贵与现代典雅结合的新东方主义风格，彰显出贵族式的生活品位和格调。



F-TYPE SAMPLE HOUSE IN CHENGDU SPLENDID CITY

成都西锦城F型样板房

This case takes floating cloud as design theme, which is the special representative in Chinese wash painting and relief art.

浮云在中国水墨画和浮雕之中有着其他国家艺术所没有的特殊代表性——本案以此作为设计的主轴。

MIXED STYLE

混搭风格



WENQING GUBEI

温情古北

Oblique lines are used incisively and vividly in this space and the connection of lines has become the passionate meet in every time. 斜的线条在空间里被设计师发挥得淋漓尽致，每一次线与线交接，都成了不言而喻的邂逅。



WENZHOU JINXIU MINGYUAN

温州锦绣名园

The space takes "charming yuppies" as the design theme, which blends different style elements to express the delicate and fashionable life taste and reflects the living ideal of new generation of fat salary people.

空间以“迷人的雅皮族”为设计主题，融合不同风格元素表达精致时尚的生活品位，代表了新一代高薪人群的居住理念。



A01 SAMPLE HOUSE IN GUANGZHOU HUABIAO PINFENG

广州华标品峰样板房A01

The interior design makes full use of outdoor river views and it is full of artistic feeling.

这套江景豪宅，其室内设计最大化地利用了室外的无敌江景，空间氛围富于艺术品味。



FONTAINEBLEAU

枫丹白露

Characteristics of femininity and hybridity, clean and clear country style, elements of Chinese and modern style, all of which are integrated in this project.

女性气质糅合田园风格的甜美清新，又兼具英伦风的直率气质，同时还巧妙点缀了中式和现代风格的元素。



4B-TYPE SAMPLE HOUSE IN SHENYANG XIANHU INTERNATIONAL VILLA

沈阳仙湖国际别墅4B户型

This case shows the various luxurious living attitudes and expresses the natural, warm and comfortable household concept by the mixed design method.

本案以杂糅的设计方式，彰显多样的奢华生活态度，演绎回归自然、温馨舒适的家居理念。



SAMPLE HOUSE IN CRYSTAL CITY

水晶城样板房

The perfect combination of modernism and neo-classicism creates the concise but not simple space style.

现代与新古典主义在空间的完美融合，营造出简约而不简单，奢华而不失高雅的空间气质。



A-TYPE SAMPLE HOUSE IN BUILDING F OF SHENZHEN EMPEROR HARBOR

深圳皇庭港湾F栋A户型

Moroccan furniture arranges in pair with modern classical household articles to create a romantic, concise and fashionable space.

摩洛哥家具搭配现代古典家居，色调浪漫简洁，流畅而不落伍。



KENSINGTON HOUSE

Kensington 住宅

"Cream, off-white and funky" is the biggest feature of this design, creating a warm and fashionable space.

“奶油、白色和质朴的”是本案设计的最大特点，显得温馨而时尚。

SOUTHEAST ASIAN STYLE

东 南 亚 风 格



THE VIEW POINT

南沙境界

The refreshing and mysterious design style creates a nature-like living space.

清爽且略带神秘感的设计风格，营造出融入自然、怡然自得的居住空间氛围。



BROOKY HILLS

溪山美地园

This case is a sample house for semi-detached villa, which is themed by elegant Southeast Asian style.

本案为双拼别墅样板房，以东南亚主题命名，风格简洁优雅。



EIGHT THROGLOR RESIDENCE

Eight Throglor 住宅

This design takes luxurious but not multifarious decoration to create the elegant and grand living space.

以奢华而非繁杂的装饰，打造出优雅大气的生活居所。



L1A-TYPE VILLA IN THE WONDER CITY, SHUNDE

顺德博澳城L1A型别墅

The natural regional custom of Southeast Asia accompanies with the outdoor garden landscape to create the elegant life environment.

自然休闲的东南亚地域风情与户外园林景观遥相呼应，创造出精致优雅的品位生活环境。

EUROPEAN AND AMERICAN STYLE

欧 美 风 格



SAMPLE HOUSE OF F-TYPE VILLA IN SEASIDE PENINSULA

南沙滨海花园F型别墅

It takes modern European style as the theme and optimizes the space function to create a vibrant space with harmonious beauty.

以现代简约欧式为主题，优化空间功能，格调明快，显现出和谐的美感。



CIMCMOON RESORT

信盟别墅

Some complicated European style symbols are abandoned. The design presents a noble and fashionable style with modern technique.

本案的设计舍弃了烦琐、复杂的欧式符号，以现代手法演绎奢华而不失时尚个性的空间风格。



C-TYPE SAMPLE HOUSE IN SECTION A OF SUMMER PALACE GOLF CHATEAU

颐和高尔夫庄园A区C型

This case is themed by the elegant private business club to express the luxurious life of English aristocrats by modern languages.

本案以端庄、典雅的私人商务会馆为主题，用现代的语言诠释英式贵族低调奢华的生活场景。

MODERN STYLE

现代风格



DEYA BUILDING

德雅大厦

This space is featured with warm and fresh Ebay Style (the special design style of E & B Decoration Singapore). The concise and high-taste design satisfies modern people's requirement for tranquility and relaxation.

清爽温馨的“易”域风情，以简洁而不失品位的设计满足了现代人渴望宁静和放松的心境。



NANJING SHANSHUI YUNFANG

南京山水云房

The designer creates the style of LOFT in this small space. The whole space has open visual field and looks neat and tidy.

设计者在小空间中做出了LOFT的风格，整个空间显得干净利落，视野开阔。



THE VILLA IN CHENGDU JADE CITY

成都翡翠城别墅

The design follows the concise style of architecture to ensure the integrity of inside and outside, pursuing a low-key luxury while expressing the modern sense.

设计遵循建筑的简约风格，以保持其内外统一的整体性，在诠释现代感的同时，也追求一种低调奢华的品质。



B-TYPE SAMPLE HOUSE IN BUILDING F OF EMPEROR BAY

皇庭港湾F座B户型

The design abandons the serious Chinese style and fussy European style and adopts the fashionable concise style.

设计简洁大气，没有中式的沉重、欧式的繁复，恰恰符合时下鲜明的简约流行趋势。



SOUL HARBOR

心家·泊

Black, white and grey are alternated in the space harmoniously. The simple and spiffy lines send out the special temperament.

设计师将黑、白、灰和谐有序地穿插在空间当中，线条简单利落，散发着简约灵秀的独特气质。



LEE'S RESIDENCE IN ZHONGHAI WANJIN HAUYUAN FOSHAN

佛山中海万锦豪园李宅

The design is on the basis of owner's hobby. The space is reproduced through the gradually ascended structure and various individual element symbols are dotted here to make the space have abundant connotation and special sense of beauty.

设计师以业主爱好为出发点，以递进的方式进行空间再创造，点缀以个性元素符号，使空间内涵丰富并独具美感。



A-TYPE SAMPLE HOUSE IN BUILDING 7 OF TIANAN GOLF LONG GARDEN

天安高尔夫珑园7栋A户型

The modern and concise design style, simple and vivid color contrast create a comfortable living environment.

现代简约的设计风格，简单而活泼的色彩对比，营造出舒适大方的居住环境。



06 SAMPLE HOUSE IN BUILDING 1 OF STARRY WINKING

星汇云锦1栋06样板房

This case takes the concise design as the basic concept and gives full expression of the design style of concise luxury and fashionable personality.

本案以简约设计为理念，将简约奢华、时尚个性的设计风格表现得淋漓尽致。



06 SAMPLE HOUSE IN BUILDING 2 OF STARRY WINKING

星汇云锦2栋06样板间

"Human-orientation" is the first design concept of this case, the humanity is embodied in details of design meticulously, showing the sweet and harmonious feeling.

“以人为本”是本案首要的设计理念，细节处均体现出无微不至的人性化设计，洋溢着贴心而和谐的居家感受。



02 SAMPLE HOVSE IN BUILDING 3 OF STARRY WINKING

星汇云锦3栋02样板间

Designed by master of concise style—Steve Leung, this case adopts modern aestheticism and takes some simple lines to create a bright space.

由“简约大师”梁志天主笔设计，凝萃现代美学主义，以简练笔触勾勒出居所的澄净明亮。



B-TYPE SAMPLE HOUSE IN SECTION A OF SUMMER PALACE GOLF CHATEAU

颐和高尔夫庄园A区B型

This open and transparent space with the style of large club for family party, the ideal space for a colorful life.

明快通透的超大面积家族派对会所风格，是一个多姿多彩、动静皆宜的理想生活空间。



E-TYPE SAMPLE HOUSE IN CHENGDU SPLENDID CITY

成都西锦城E型样板房

The design style of minimalism expresses the living attitude of modern young people and creates the convenient household environment with a strong sense of contemporary.

本案采用简约主义的设计风格彰显现代年轻人的生活态度，打造出便利而不失时代感的家居环境。

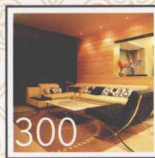


ONE BEACON HILL

毕架山1号

The designer tries to create infinitive scenes within a confined interior space, forming the "refined" and "mobile" characters of space.

设计师在有限的室内空间里创造出无限的场景，打造出优雅而灵动的空间氛围。



B-TYPE HOUSE IN ZHONGYUAN MINGDU

中原名都B户型

The design adopts simple lines and surfaces to create the graceful style, and the open layout shows the modern sense.

设计师在本案的创作中，以极简的线和面营造出典雅的风格，大气的格局极富现代感。

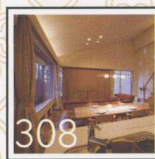


MY DREAM HOUSE

我梦想的家

The clean and simple design results in a spacious, comfortable and relaxing dream home.

简约的设计创造一个充满空间感、令人舒适和放松的梦想家园。



YH RESIDENCE IN TATESHINA KOGEN, JAPAN

日本蓼科YH邸

This case makes full use of beautiful natural landscape in Tateshina Kogen to create a "little art gallery in forest".

本案充分利用蓼科高原美丽的自然景观，打造出“森林中的小小美术馆”。



CHEUNG'S RESIDENCE

张氏公寓

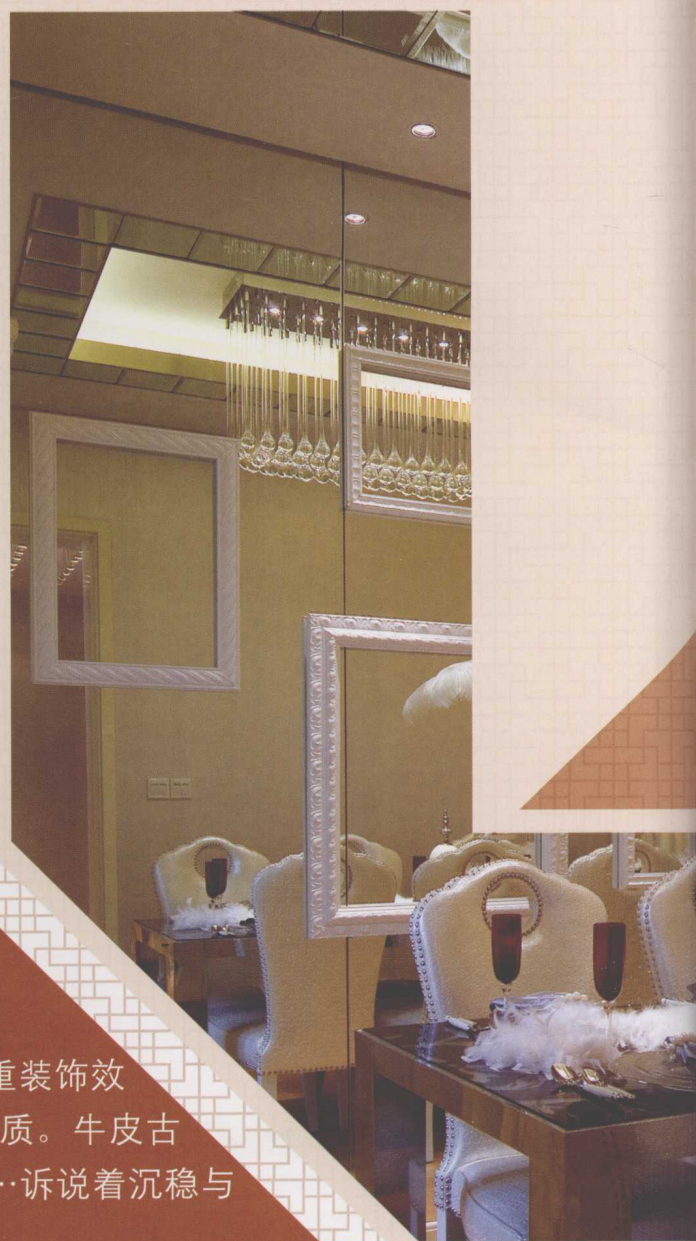
This duplex residential apartment features a basic scale of monotone throughout the space.

由始至终地使用单一色调，是这个复式住宅单位的设计元素特色。

新古典主义

经过洗礼的欧洲古典风格被再次定义，有着极强设计感和奢华感的元素被提炼出来，演绎出备受精英阶层推崇的新古典主义风格。它以时尚的理念表现最古雅的韵味，通过对传统文化的认知，将现代元素和传统元素完美结合，体现出鲜明的、令人兴奋的空间活力。

“形散神聚”是新古典家居配饰设计风格的主要特点。在注重装饰效果的同时，用现代的手法和材质还原古典家居配饰的设计气质。牛皮古铜架台灯、雕花铁架床、铜制灯具、缎面窗帘、典雅坠饰……诉说着沉稳与华贵、古典与现代的双重审美效果。



NEO-CLASSICAL STYLE

The elements full of strong design sense and luxurious feeling are extracted from the redefined European classical style to fetch the neo-classical style, which is highly praised by elite class. This style represents the classic beauty in fashionable ideas and integrates the modern elements and traditional elements perfectly through the cognition for traditional culture, expressing the bright and exciting space vitality.

"Distributing Shape with Focus on Spirit" is the main feature in decorative design of neo-classical style. It does not only lay emphasis on the decorative effect, but also emphasizes the restoration of classical characteristics by modern techniques and materials. Cowhide bronze table lamp, engraving iron bed, copper lamps, satin faced curtain, elegant aiglet... all represent the double aesthetic effect of stability and nobility, classicism and modernism.



Area: 150 m²

面积: 150 平方米

Designer: Ling Zida / Yang Jiayu

设计师: 凌子达 杨家瑀

Design Company: Kris Lin Interior Design

设计单位: 达观国际建筑室内设计事务所

Main Materials: Oak / Ebony / French Beige Marble / Emperador / Tawny Glasses

主材: 橡木、乌木、法国米黄石材、啡网纹石材、茶镜



B-TYPE IN NO.1 HAIRUN PARK ROAD FUZHOU

HARMONIOUS AESTHETIC CONSTITUTION

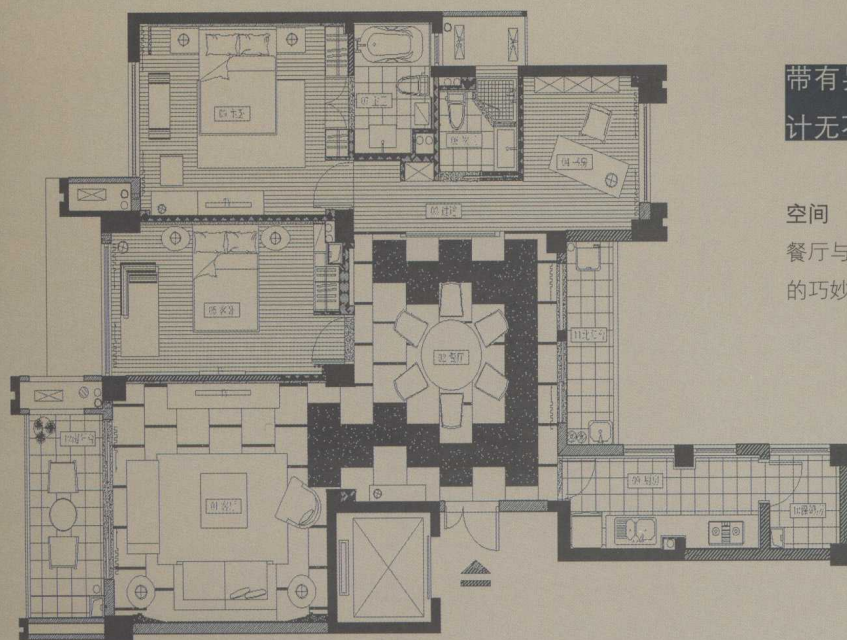
福州海润公园道1号B户型

去繁就简 姿容典雅

The living space with exotic feeling and modern classical style represents a kind of elegant aesthetics.

Space

The wall between dining room and corridor is demolished and replaced by a transparent screen. This kind of layout does not only increase a moving line, but also enhance the interaction among different functional areas.



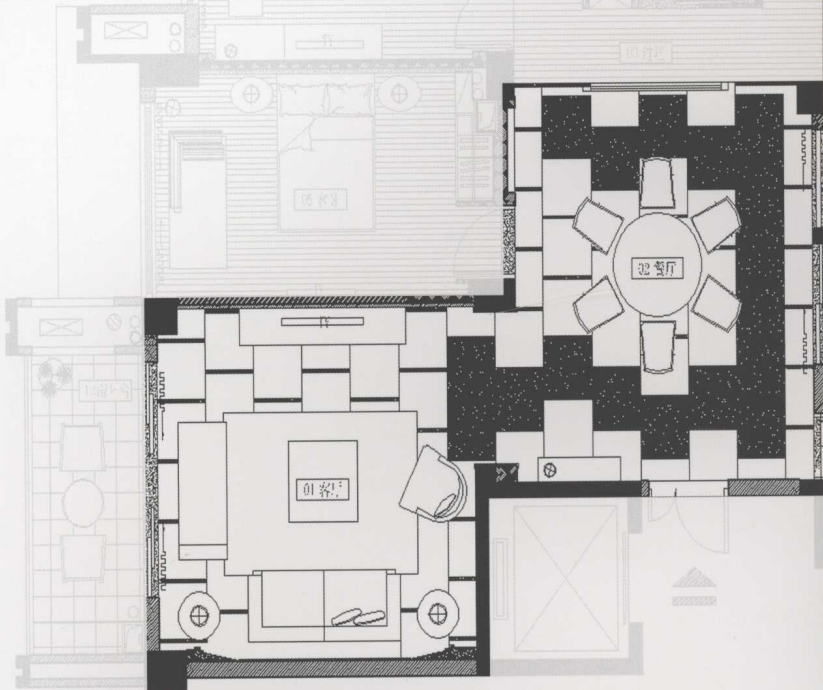
带有异国情调的古典主义，配以现代的居室风格，整体设计无不透露着一种优雅的居住美感。

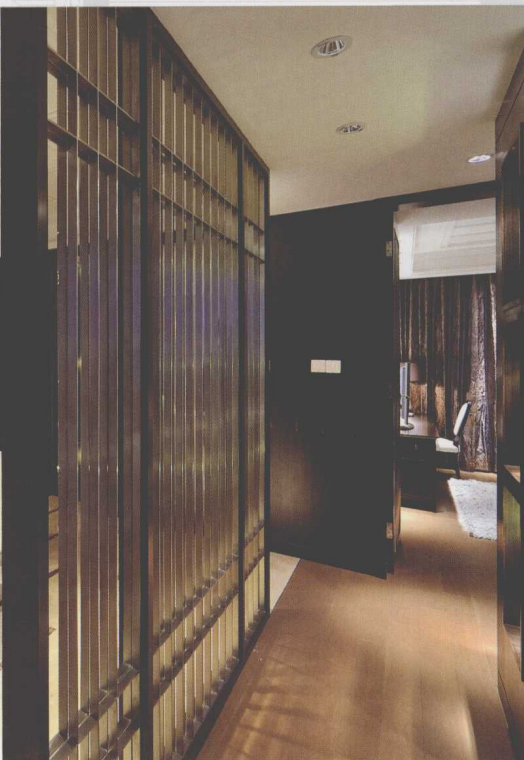
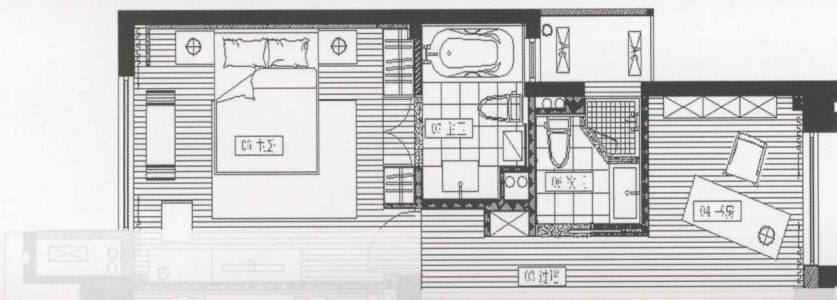
空间

餐厅与过道处的墙面被拆除，并设计成具有通透性的隔断，这是本案布局的巧妙之处。由此不仅增加一条动线，也让空间与空间之间多了份互动。

Style
The overall design adopts neo-classical style, which uses modern techniques and materials to show the classical feeling of household and makes the house have the double aesthetic effect of classicism and modernity.

风格
样板房的整体设计风格定义为新古典主义，利用现代的手法和材质还原出家居的古典气质，使家居具备古典与现代的双重审美效果。





Decoration

The space mainly uses dark-toned color complemented with cream color, other colors are blended into the paintings or flowers. The elegant curves of furniture set off the straight lines of wall face and floor to express a kind of harmonious "aesthetic constitution".

配饰

空间以深色调为主，米色调次之，其他点缀颜色都融入到油画、花卉中。造型优美的家具弧线与墙面、地面上的直线相互衬托，让人感受到一种和谐的“美学构成”。

