

最新 洗浴&SPA设计

THE LATEST BATH & SPA DESIGN

深圳市创扬文化传播有限公司 主编



华中科技大学出版社

<http://www.hzbook.com>

图书在版编目 (CIP) 数据

最新洗浴& SPA设计 / 深圳市创扬文化传播有限公司 主编.

—武汉: 华中科技大学出版社, 2010.5

ISBN 978-7-5609-5736-4

I.最… II.深… III.浴室-室内设计-图集 IV.TU241-64

中国版本图书馆CIP数据核字 (2009) 第182134号

最新洗浴& SPA设计

深圳市创扬文化传播有限公司 主编

出版发行: 华中科技大学出版社 (中国·武汉)

地 址: 武汉市武昌珞喻路1037号 (邮编: 430074)

出 版 人: 阮海洪

责任编辑: 赵爱华

责任监印: 张正林

版式设计: 张 靖

印 刷: 利丰雅高 (深圳) 印刷有限公司

开 本: 965mm × 1270mm 1/16

印 张: 13.5

字 数: 21.6千字

版 次: 2010年5月第1版

印 次: 2010年5月第1次印刷

书 号: ISBN 978-7-5609-5736-4 /TU · 707

定 价: 188.00 元

投稿热线: (010)64155588-8012 hzjztg@163.com

销售电话: (022)60266190, 60266192, 60266193, (022)60266199 (兼传真)

网 址: www.hustpas.com; www.hustp.com

(凡购本书, 如有缺页、脱页, 请向本社发行部调换)

最新 洗浴&SPA设计

THE LATEST BATH & SPA DESIGN

深圳市创扬文化传播有限公司 主编



华中科技大学出版社

<http://www.hustpas.com>



序 言

做了十几年的设计工作，今天突然给自己提出个问题：“究竟该如何做设计？”思考着这个问题，不禁哑然失笑，这个看似浅显的问题其实又是那么平实而深邃。

面对今天繁荣的室内设计行业：风尚、格调、西式、中式、混搭、现代、后现代、ARTDECO、奢华艳丽、Less is more 凡此林林总总，让人有一种无法言说的惘然和疲倦。我们处在一个瞬息万变的时代，一个power滚滚洪流奔涌不息的时代，她造就了这个行业，这个特殊群体大气磅礴的性格特质，热衷追求更高、更快的叙事语境，然而随着深层的裂变，更多元的文化诉求，她需要的是更多、更本质、更真诚、更加具有直击人心灵的智慧。而设计师的真诚不矫饰，设计师的普世的社会责任感，设计师的谦和浑厚的品格，设计师对文化的关注及传导，都将成为引起新的设计进化的生存要素，所谓的风格、手法都将成为浅层的物质体现方法，叩动心门的其实是对生活的认知和真诚的态度。

回到主题，无论是SPA也好瑜伽会馆也好，都是繁忙的都市人寻求由身至心的暂时的避世静栖的居心地，那么什么样的地方是可以让人彻底的放松呢？我认为最好最直接也最容易做到的就是投入到天地自然中去感受你本初的存在，你原始的意义，让心因为洗涤而变得清澈，就象SPA一词源于拉丁文“Solus Por Aqua”，Solus=健康，Por=经由，Aqua=水，意指用水来达到身体的健康，而YOGA的意思是“和谐、统一、相应、结合”，所以设计师能做的应该是通过空间的营造帮助人们直达本意，体悟生命。

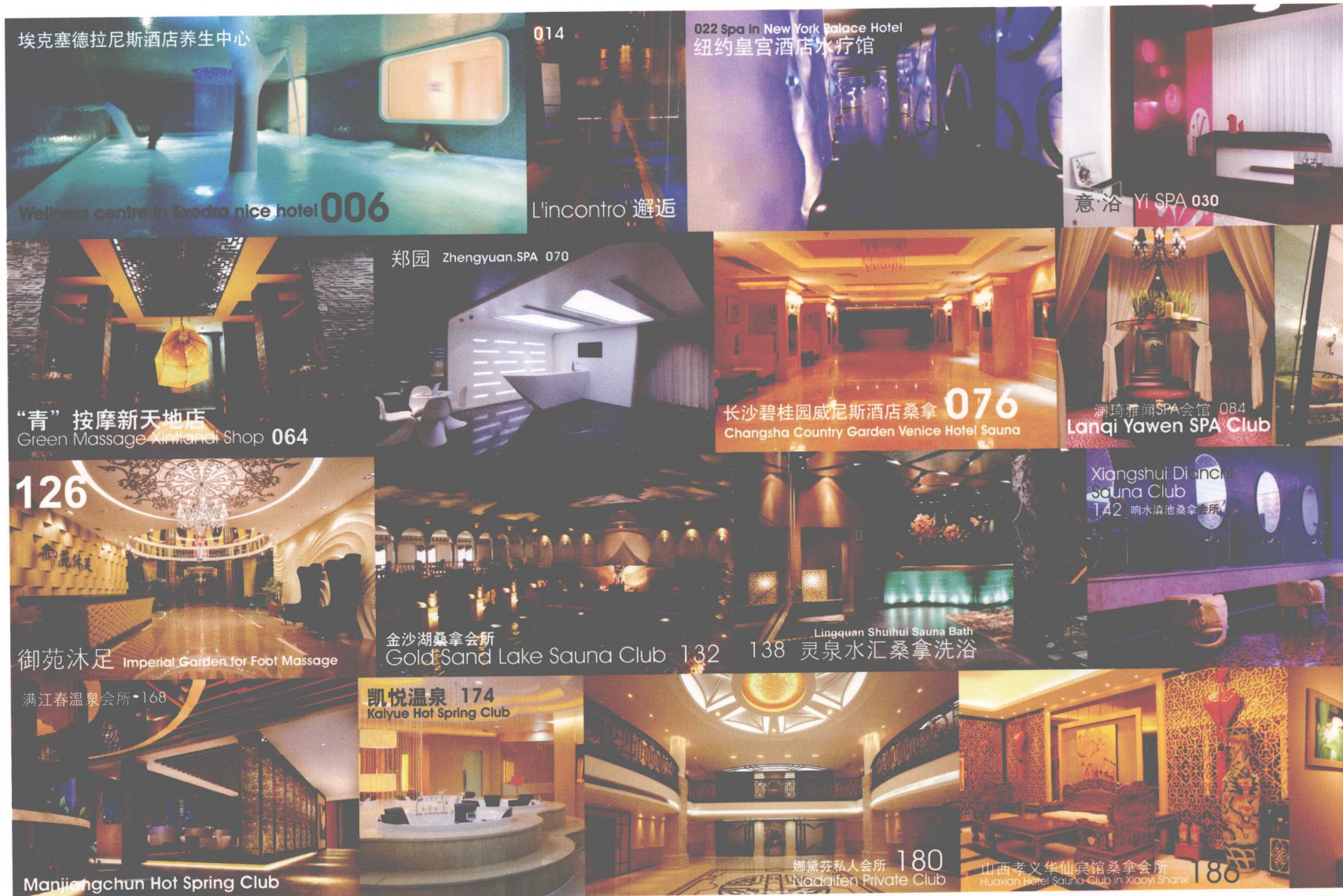
韩 松（深圳市昊泽空间设计有限公司）

preface

The design work I have done for ten years, today I ask for myself: "How do I work for design?" I am thinking for this question, and unbearable smile, this question looks simple but complexity. Today facing the prosperous interior design profession: fashion, style, western, centralized, modern, post-modern, ARTDECO, luxurious and bright, less is more.....and so on, make us have an untold disconsolate and tired. We are in a period full of changes and powerful, this period creates this profession, this special group of spacious character and keen to pursue higher, more extreme narrative environment, but with the deep fission, more diversified cultural appeal, she needs more essence, more sincerity and have more wisdom direct to human's heart. The designers are sincerely but not foppish, designer's universal social responsibility and modest character, these all will become the survival elements of promote the progress of the new design. The style and technique will be the method which reflects the shallow substances, touch the right chord is actually the attitude of life's cognition and sincere. Back to the subjects, whatever spa or yoga club is both the place for people to seek the temporary refuge from the body to the heart. So what kind of place can let us complete relax? I think the best and direct way is put you into the natural world to feel your prime existence and original value, wash your heart and make it clear, like the word SPA is derived from Latin "Solus Por Aqua", Solus= healthy, Por=from, Aqua=water, it refers to use the water to achieve healthy. And Yoga's meaning is "harmonious, unified, corresponding and combined" So the designers can do is create a space to help people direct to their intention and see into their life.

Hansong (Shen Zhen Haoze space design Co.Ltd)

目录 CONTENTS





Sheraton "Centro Histórico" Hotel
Spa & Fitness Center 036



柏莉雅女子会所 044
BOLIYA Women's Club



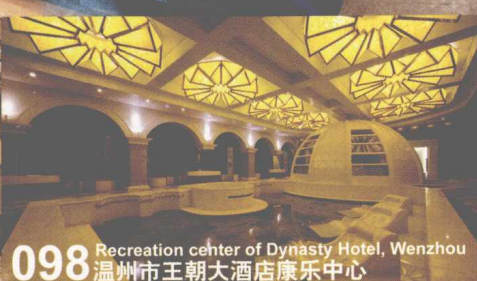
海都国际水会
Haidu International Spa 050



058
Modern Beauty Baby Tao Salon & Spa
你好漂亮陶·会所



杭州悦源SPA 092
Yueyuan SPA in Hangzhou



098 Recreation center of Dynasty Hotel, Wenzhou
温州市王朝大酒店康乐中心



金色沙妍SPA馆 106
Gold Shayan SPA



Shenzhi Tang Foot Massage

神足堂足疗会所 114



海龙足道 120
Hailong Foot Therapy & Massage Center



城良子足浴 146
Yan Cheng Liang Zi Foot Massage



南京王春美容店CFC摩登馆 152
Modern House of Wang Wang Beauty Salon



北京花水湾磁化温泉度假村
Flowery Bay Magnetic SPA Resort Beijing 156



九号会所浴馆 SPA of No.9 Club 160



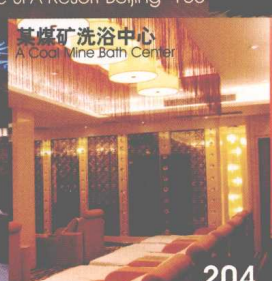
深圳广益子桑拿中心
Shenzhen Guangyizi
Sauna Center 192



金瀚洋休闲会所 196
Jinhan Yang Leisure Club



北京华逸天伦水世界 200
Beijing Huayuan Tianyun Water World



某煤矿洗浴中心
A Coal Mine Bath Center

204



素问堂 Surchoix 208

埃克塞德拉尼斯酒店养生中心 Wellness centre in Exedra nice hotel

设计公司: Simone Micheli Architectural Hero

设计师: Simone Micheli

项目地点: 法国尼斯

项目面积: 700平方米

装饰材料: 流体塑料、聚氨酯、石膏、白树脂

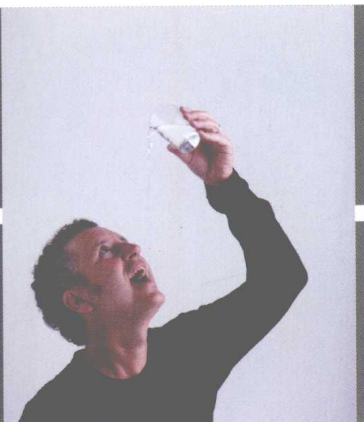
Design Company: Simone Micheli Architectural Hero

Designed by: Simone Micheli

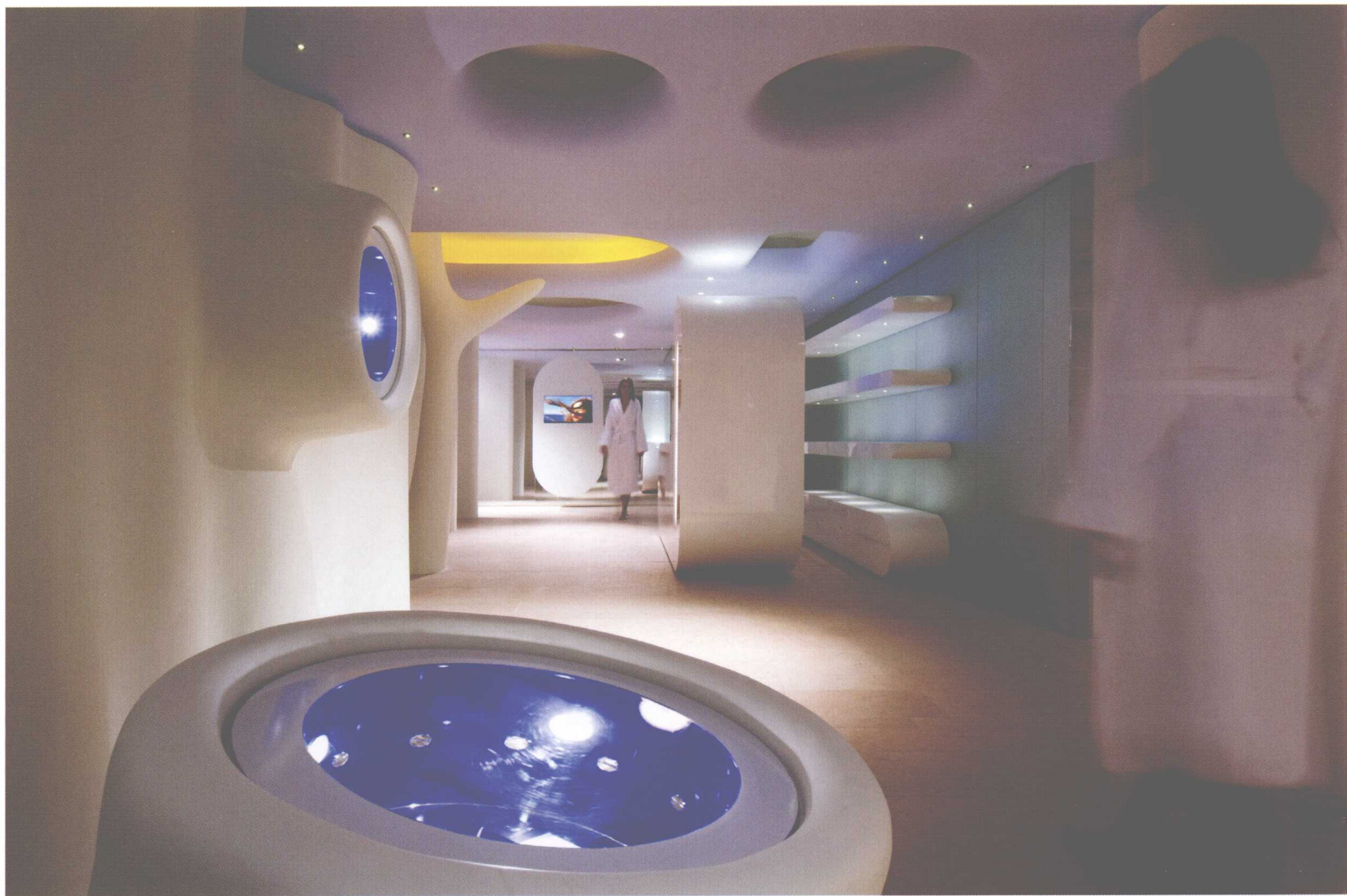
Project location: Nice, France

Project area: 700 m²

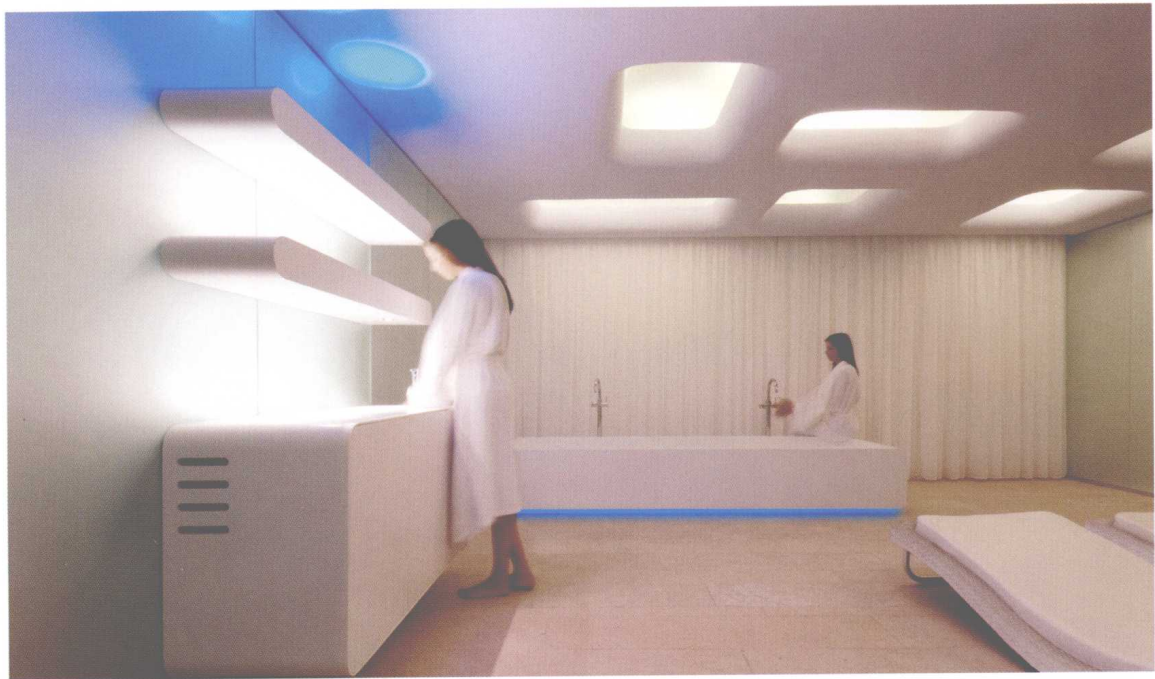
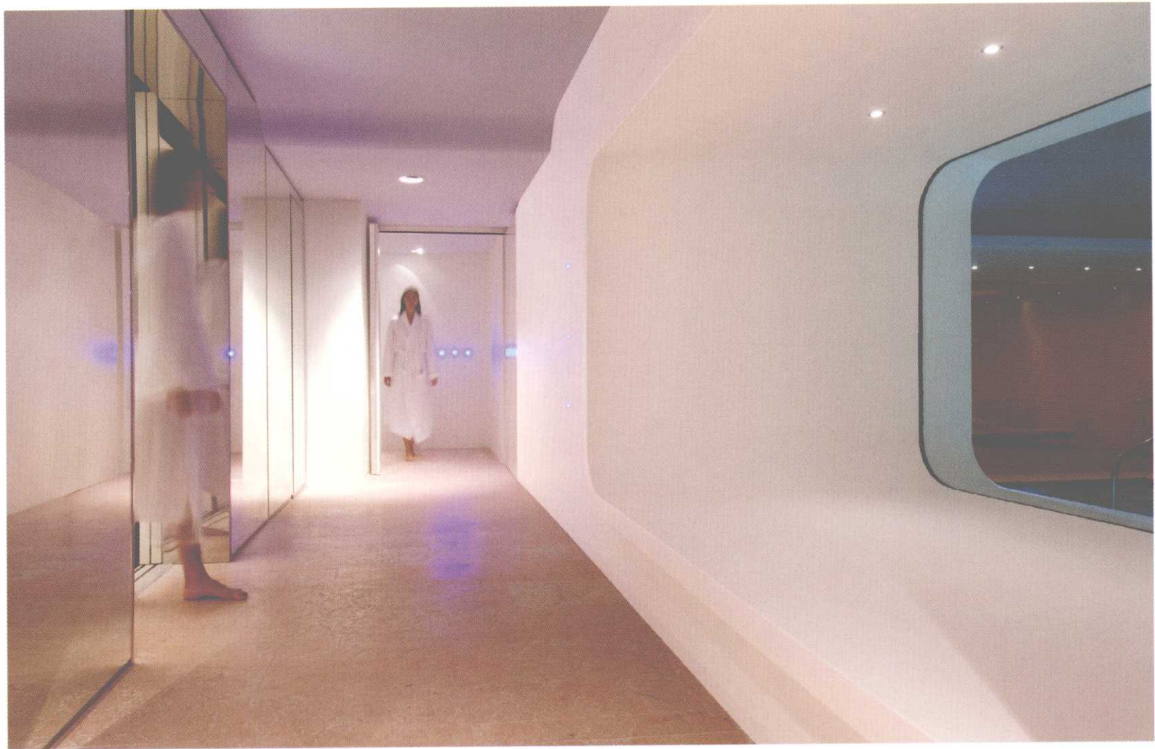
Decoration materials: Fluid plastics, polyurethane, plaster, white resin









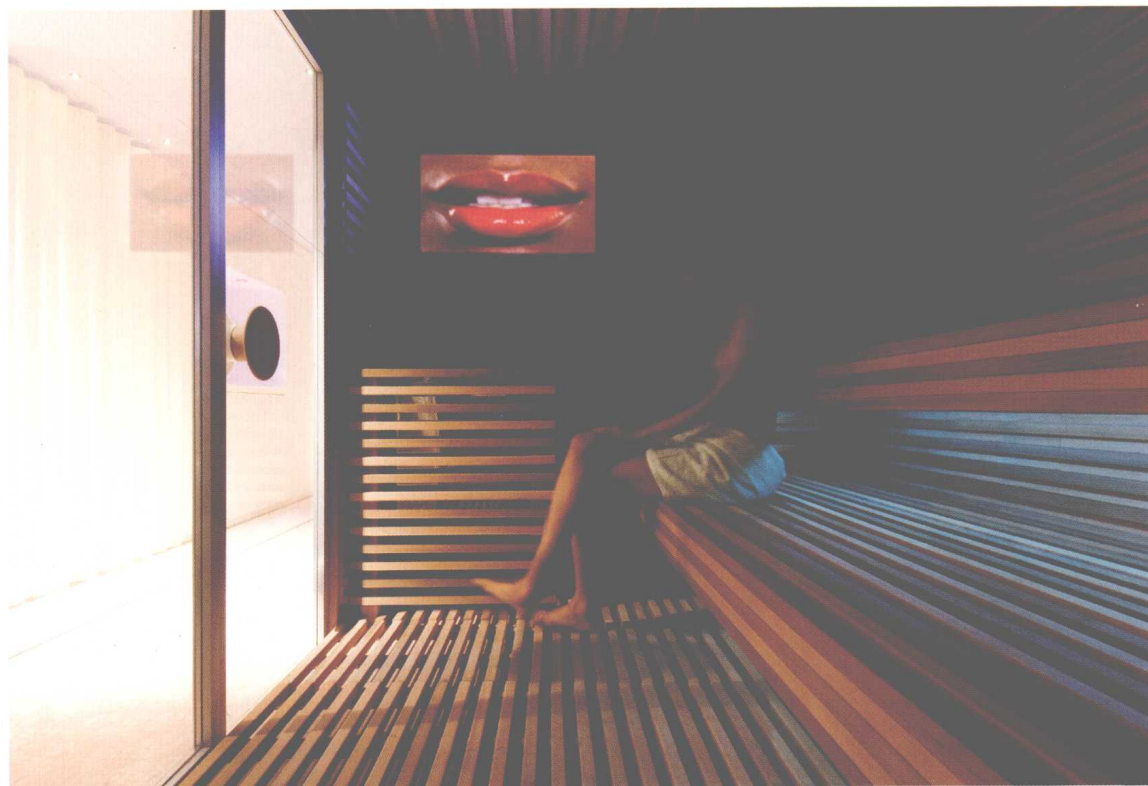


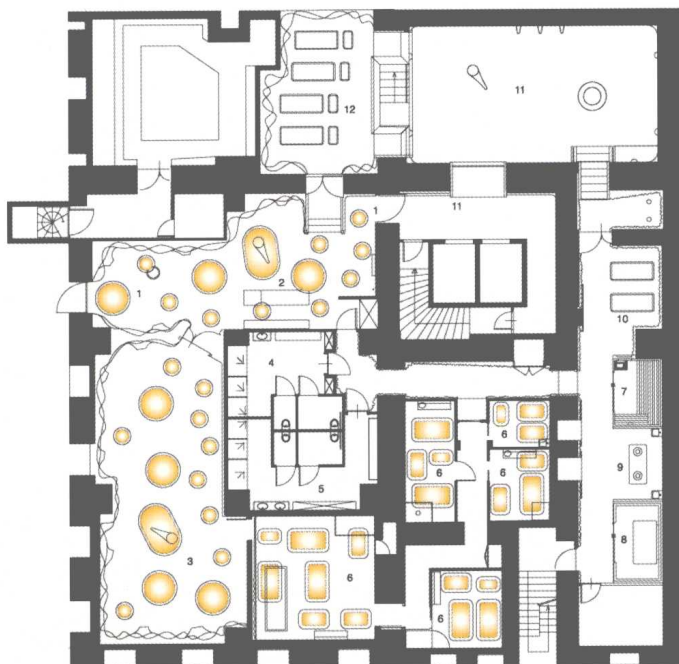


本案是一个超越时代的作品，它的表现视角是如此有力，将成为未来世界的养生中心的参考，它能把使用者带到一个立体三维的感觉空间，这是前所未有的。正是基于这样的理念，埃克塞德拉尼斯酒店新的养生中心诞生了。

这是一种3D模式，将可能的和需要的元素组合，让建筑、人体感觉和健康基因组合，使基本元素、装饰品、塑料、局部信息因素形成合力，使得客人的个体感觉直接融入空间，在美好的梦想中产生虚幻的感觉。这样一种感觉的、视觉的、概念的立体映像，就是要描绘出一种途径，把人与人之间的关系升格，建立空间和健康度，在理论大小和真实条件中，在物、面、光、色、味、声和水中产生效应。

It's about an iper-contemporary work, with Sueh a strong expressive point of view that woule become an iconical reference for the future of wellness centers in the world, which is able to involve users in a 3D pluri-sensorial dimension never seen before. From this conceptual foreword was born the new wellness centre of Exedra Nice Hotel. It is a 3D model of the possible and wanted union of architecture, sensations and wellness. It unifies the powers of the elementary elemehts,decorations,plastics and the lurd forms to lead the personal sense of the guest directly into the space and then creates an unusual experienle in a wonderful drean. It is a sinestetie, visual, conceptual and volumetric relection that means to describe a path for the celebration of the relation-ship between men, to build up space and wellness, and to cause a teactron between theoretical dimensions and composed truth, between matter,surfaces,light,colour,sound,fragrance and water.

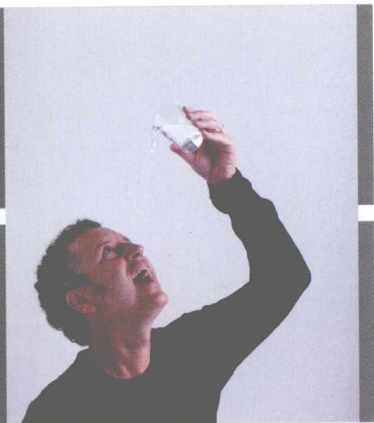




邂逅
L'incontro

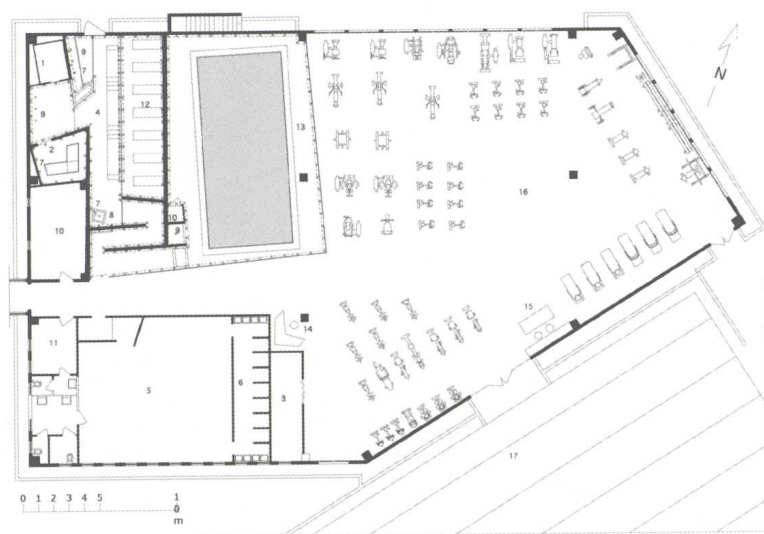
设计公司: **Simone Micheli Architectural Hero**
设计师: Simone Micheli
项目地点: 意大利
项目面积: 1100平方米
装饰材料: 黑色塑料、玻璃

Design Company: Simone Micheli Architectural Hero
Design by: Simone Micheli
Project location: Italy
Project area: 1100 m²
Decoration materials: Black plastic, glass





该建筑三大主要功能区域包括：体育馆、游泳馆和健康中心。选用夹层片麻岩和深色的本地石材来诠释这些空间，用于地板和墙壁的装饰，它创造了一段游走于半黑暗的感官旅程，象征领域和谐、内部安康的防护外衣。SPA是布局有序的房间体系，它包括芳香疗法和色彩疗法、桑拿浴、土耳其浴、冷热水交替的淋浴，芳香浴、足底按摩的雨花石小道和制冰机的休闲区。它像是一个有跳跃喷泉的天然洞穴，不同的状态，从冰到细流，穿过金属元素从岩石喷出来。因此它的构成能够引起共鸣，有活力且与风水的寓意保持一致。它将世界建筑的自然过程转变成了人造的旨在恢复生命活力的空间环境。



The new building features three main areas: the gym, the swimming pool and the wellness centre. split gneiss and dark local stone were chosen to characterise these spaces. used as the decoration of the floors and walls and create a journey of the sense through the semidarkness which is like a cover that represents harmony and interior well-being. The spa is a system of rooms laid out sequentially and includes a relaxation area offering aromatherapy and colour therapy treatments, a sauna, a Turkish bath, jet showers that alternate hot and cold water, aromatic showers, a path over river stones for plantar massages and an ice machine. It is like a natural grotto with plays of water that, in its different states – from ice to steam-spews from the rock through metal elements. The composition is thus evocative, dynamic and harmonious and, in keeping with the dictates of feng shui, transposes the natural processes of the construction of the world into an artificial spatial milieu that is for people to regenerate vital energy.