

# INTERNATIONAL DESIGN COMPETITIONS

Edited by Editorial Board of U.S.COMPETITIONS

3

美国建筑竞赛集成

美国《竞赛》杂志编辑部 编

常文心 王晨晖 米沛 译

辽宁科学技术出版社

# **INTERNATIONAL DESIGN COMPETITIONS**

Edited by Editorial Board of U.S. COMPETITIONS

3



# INTERNATIONAL DESIGN COMPETITIONS

Edited by Editorial Board of U.S.COMPETITIONS

3

美国建筑竞赛集成

美国《竞赛》杂志编辑部 编

常文心 王晨晖 米沛 译

辽宁科学技术出版社



# CONTENTS

## 目 录

- 6 **Santa Rosa Courthouse Square Competition**  
圣罗莎政府广场竞赛
  - 10 SWA Group
  - 18 Campbell & Campbell
  
- 24 **The Highline Competition**  
废弃高架铁道线竞赛
  - 28 Field Operations and Diller Scofidio + Renfro
  - 30 Zaha Hadid Architects
  - 32 TerraGRAM
  - 34 Steven Holl Architects
  
- 36 **The Transformation of Strip Malls Competition**  
老商业街改造竞赛
  - 38 MOS
  - 40 AEDS
  - 42 Aptum Architecture
  - 44 Other contestants' schemes
  
- 48 **Water Street Elevated Plaza Competition**  
华特街上升广场竞赛
  - 52 Rogers Marvel Architects and Ken Smith Landscape Architect
  - 58 William McDonough + Partners and VMDO Landscape Studio
  - 60 Weisz + Yoes, Judith Heinz, Michael Singer and the Sam Schwartz Co.
  - 64 Other contestants' schemes
  
- 76 **Rutgers' College Avenue Design Competition**  
罗格斯大学校园林荫道设计竞赛
  - 80 TEN Arquitectos/ Wallace Roberts  
Beyer Blinder Belle/Ateliers Jean Nouvel with Oehme, van  
Sweden & Associates
  - 92 Antoine Predock Architect/ Olin Partnership
  - 94 Morphosis and Hargreaves Associates
  - 98 Eisenman Architects/ Field Operations
  
- 102 **UBC's University Boulevard Competition**  
UBC大学林荫大道竞赛
  - Moore Ruble Yudell Architects and Planners with Huges Condon  
Marler Architects
  - 106 Patkau Architects
  - 110 Aliies and Morrison with Prscenium Architecture
  - 112

**114 Orange County Great Park Competition**

橘子郡大公园竞赛

- 118 Ken Smith Landscape Arch/TEN Arquitectos  
126 Royston Hanamoto Alley & Abey  
130 EMBT

**134 Buzzards Bay Bridge/Park Competition**

巴泽兹湾大桥公园竞赛

- 138 Axis Architecture  
144 Liz Swanson/Mike McCoy  
146 Martin + Cox  
150 Jhaelen Eli and Juliet Hernandez  
152 PEG

**158 Caracas Grand Central Square Competition**

加拉加斯中心大广场竞赛

- 162 University of Pennsylvania  
166 Judith Stilgenbauer, Kit Shihting Wang, Calder Gillin

**168 Washington Canal Park Competition**

华盛顿运河公园竞赛

- 172 Gustafson Guthrie Nichol Ltd.  
174 Hood Design  
176 Sasaki Associates  
178 Atelier Dreiseitl/Stephen Stimson Associates

**186 Coney Island Aquarium Competition**

科尼岛水族馆竞赛

- 190 West 8 with Weisz + Yoes Architecture  
194 Smith-Miller + Hawkinson Architects  
200 Wallace Roberts & Todd

**204 Gondwana Circle Design Competition**

冈瓦纳圈设计竞赛

- 206 Michael Overby & Emma Fuller  
Jeffrey Gordon Smith & Danielle Cegelski, Paul Morabito, Eric  
208 Silva, Bradley Sunnarbog  
210 Other contestants' schemes

**212 San Francisco Museum of Modern Art's  
Rooftop Sculpture Garden Competition**

旧金山现代艺术博物馆屋顶雕塑花园竞赛

- 216 Jensen & Macy Architects  
220 Mark Cavagnero Associates  
224 envelope A+D  
232 Fougeron Architecture  
236 Kuth/Ranieri Architects  
240 Pfau Architecture

**246 Amsterdam Schiphol Airport Competition**

阿姆斯特丹史基浦机场竞赛

- 250 Toine van Goethem  
252 Kas Oosterhuis

**254 California Highway 99 Rest Stop Competition**

加州99号高速公路休息站竞赛

- 258 Michael Wenrich  
260 Consortium Architects  
262 Laura Garofalo

**264 Chicago Protal Project Competition**

芝加哥门户项目竞赛

- 268 Leven Betts Studio  
270 Dan Rappel, Kevin Schellenbach and Isabella Gould  
272 Vitale/ Benson

**274 The New Mexico Spaceport Competition**

新墨西哥州太空站竞赛

- 278 URS/ Foster + Partners  
280 HKS/ Antoine Predock Architect  
286 Gensler/ May Keller McNamara

**290 Index**

索引



# Santa Rosa Courthouse Square Competition

圣罗莎政府广场竞赛





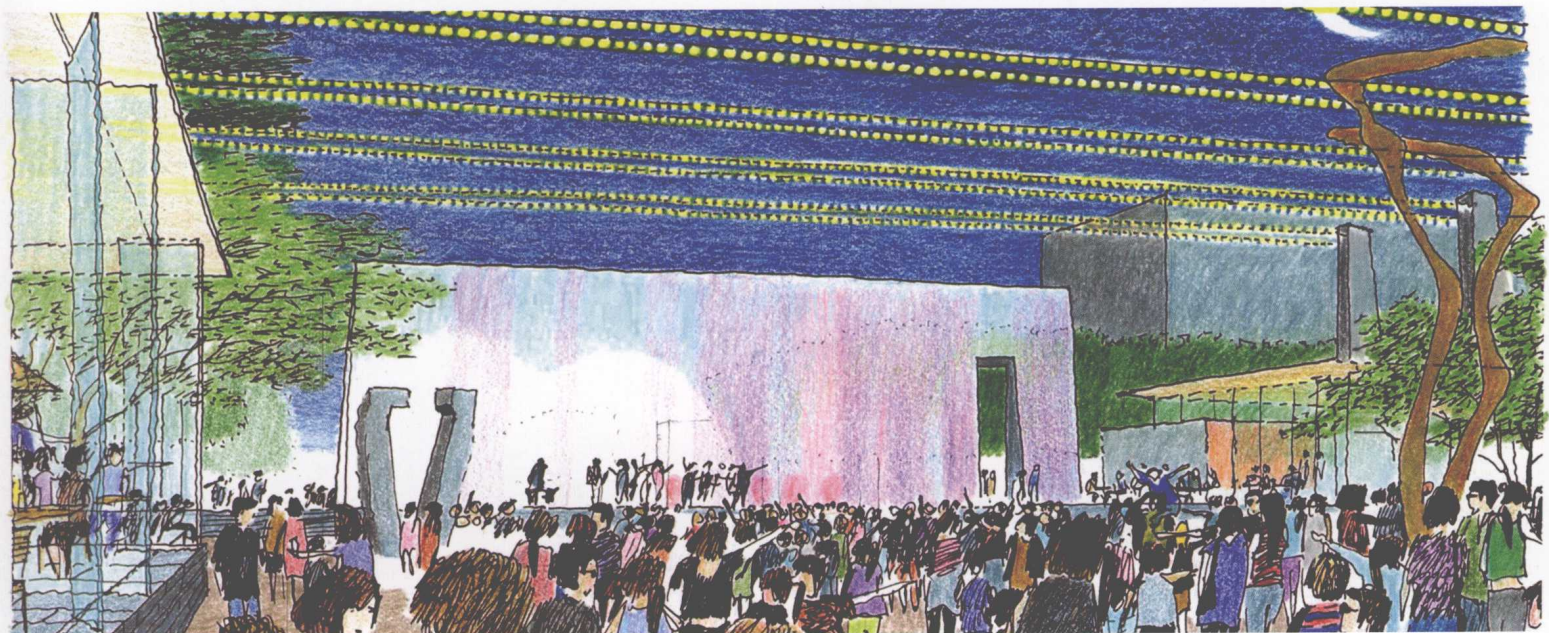


Santa Rosa 2020 outlines future growth and development of the Courthouse Square: "Courthouse Square is the focal point of the downtown often hosting performances, activities and entertainment right in the heart of downtown. It attracts business activity and patrons, retail facilities and shoppers, and performers and audiences. It is a distinctive place that residents can take pride in identifying as the center of their hometown."

To achieve the goals above, the city initiated a design competition for the redevelopment of the square in April of 2007. Competitors were asked to integrate new uses with adjacent existing uses like restaurants and retail as well as provide a large "flexible" space for performances, a community gathering space.

“圣罗莎2020计划”描述了政府广场的前景：“政府广场是圣罗莎的市中心的焦点。它的景观空间和广场区域为人们在市中心提供了一系列体育、演艺、娱乐活动。它吸引了商业活动和赞助商，零售业和店主，演员和观众。这是一个居民们能引以自豪的市中心广场。”

为了实现以上目标，圣罗莎市于2007年4月为重新开发政府广场举办了一次设计竞赛。参赛者被要求将广场的用途和周边现有的零售店、酒店结合在一起，同时为表演、社区集会提供一个安全、舒适的环境。







EXCHANGE BANK

MENDOCINO AVE

4TH STREET  
MARKET & DELI

KINDRED

CALIFORNIA  
LUGGAGE

MARK ALLEN  
JEWELERS

THE KRE

FOURTH STREET

1

2

3

4

5

6

7

8

9

14

10

11

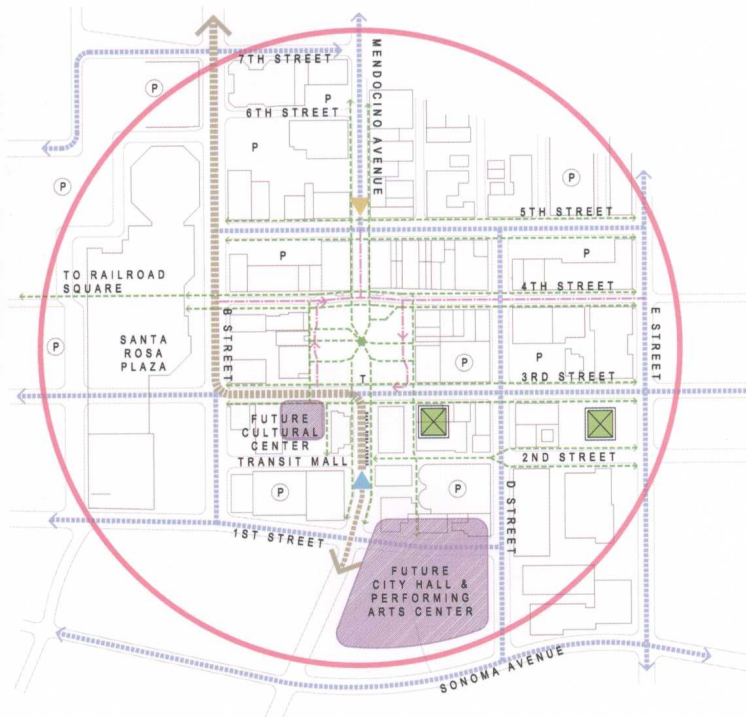
THIRD STREET

SANTA ROSA AVE

BANK OF AMERICA



## 专家点评 Remarks



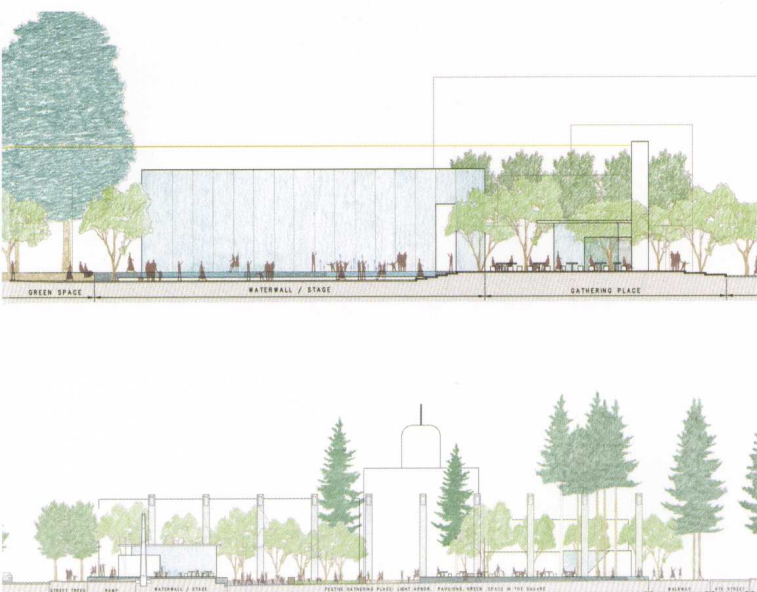
All of the designs have unique strengths and could all have just as easily resolved the issues presented in the program. But making a successful outdoor room that can function well in the context of a downtown environment will always be a challenge.

所有的参赛设计都有独特的优点，而且都能够达到竞赛的要求。所有的设计都在向创造有力的室内外连接空间发展，但是创造一个在市中心环境中能成功行使自己功能的户外空间才是更大的挑战。





## SWA Group Project 1 the first prize



The jury chose SWA Group as the winner, describing their scheme as a "powerful, big idea". Aptly titled "Santa Rosa's Green Living Room," there are quite a few "big ideas" in the SWA design, ranging from aggressive vehicular circulation strategies to photovoltaic systems on pavilions. However, the centerpiece of the SWA design is the "light arbor" that spans all of the sub-spaces around the main plaza and ties the entire project together. The "arbor" component is little more than a series of parallel light-strings stretched, but the effect is grand. In the evenings, the lights would add to the carnival-like atmosphere even with no events scheduled; but they also provide a more attractive alternative to the "safty" lighting required for almost all urban open spaces. The effect isn't limited to the evenings. Because of their size and height off the ground, the cables and lights would most likely be obscured during the daylight hours, but the massive columns supporting the light arbor provide a formal element along the edges that both defines and contains the space.

Back on the ground, the SWA plan essentially organizes the plaza around three distinct sub-spaces; two smaller, separate pavilion nodes close to the northern edge of the square and one larger cluster of structures along the Third Street edge. The smaller pavilions to the north anchor mini-plaza spaces that are slightly elevated and help create a northern boundary for the main central "flex" space. The structure along the Third Street are slightly elevated and connected to a central stage, the backdrop for the stage and also as the visual terminus of Santa Rosa Avenue.

评审委员会选择了SWA集团作为优胜者，称他们的设计是一个“有力的大创意”。SWA的作品名为“圣罗莎绿色生活空间”，有很多“大创意”：上到凉亭上的光电池系统，下至积极的车辆流通策略。但是，这一设计的核心是横跨外绕主广场的“灯轴”，它们将整个项目连结到了一起。“灯轴”其实只不过是一系列平行的光束，但是其效果显著。夜晚，即使没有活动，灯光也能营造一种嘉年华的氛围；同时，也提供几乎所有开放的城市设施所必须的安全照明。灯轴的效果还不仅仅体现在夜晚。由于电缆和灯的高度，在白天，它们看起来很不显眼，但是支撑灯轴的大型支柱在广场边缘给空间划分了分明的界限。

从地面上来看，SWA的设计主要围绕三个独立的区域展开：两个较小的凉亭在广场的北部边缘，另一幢稍大的建筑则沿第三大街建造。北侧的两个凉亭建在略微抬高的迷你广场上，在北侧为中心广场创造了一个边界。沿第三大街建造的建筑也被略微抬高，和中心舞台相连。舞台的背景是一个雕塑瀑布，瀑布也是圣罗莎大道的尽头。

