

TOP HOUSING

RIHAN CC-052X>TOP HOUSINGX> HK RIHAN INT'L CULTURE SPREAD LIMITED
香港日瀚國際文化傳播有限公司 編 <http://www.rihan.cc>

住宅特輯

《 華中科技大學出版社
www.hustp.com

RIHAN.CC>052

TOP ARCHI.1

住宅特輯

香港日瀚國際文化傳播有限公司 編

TV242-62
16:52

圖書在版編目 (CIP) 數據

Rihan.cc>052住宅特輯

香港日瀚國際文化傳播有限公司編

—武漢：華中科技大學出版社，2007年8月

(RIHAN.CC Top 建築專集)

ISBN 978-7-5609-4054-0

I. R... II. 香... III. 住宅—建築設計—作品集—世界 IV. TU241

中國版本圖書館CIP數據核字 (2007) 第081334號

Rihan.cc>052住宅特輯

香港日瀚國際文化傳播有限公司

地址：香港中環皇后大道中142-146號金利商業大廈7樓7A室

電話：(00852)25814966

傳真：(00852)28514966

移動電話：15800334158 13621898862 13916371789

主編：邢日瀚 李天彬

責任編輯：王彩霞 孫起慧

責任校對：朱霞

責任監印：蔡曉瑚

出版發行：華中科技大學出版社

地址：湖北省武漢市洪山區珞喻路1037號

郵編：430074

電話：027-87556096 (銷售) 63782221 (郵購)

版式 / 封面設計：上海日瀚文化傳播有限公司

印刷：凱基印刷 (上海) 有限公司

開本：220 mm× 300 mm

總印張 (6本)：107.5

總字數：215千字

版次：2007年8月第1版

印次：2007年8月第1次印刷

定價 (6本)：人民幣1299.00

ISBN 978-7-5609-4054-0 / TU·155

Rihan.cc>052 Top Housing

H.K. RIHAN INT'L CULTURE SPREAD LIMITED

Address / Flat / Rm 7a, 7 / F., Kimley Commercial Building,

142-146 Queen Road Central, H.K.

TEL / (00852)25814966

FAX / (00852)28514966

Mobile / 15800334158 13621898862 13916371789

Chief-editor / Xing Rihan Li Tianbin

Executive Editor / Wang Caixia Sun Qihui

Executive Proofreader / Zhu Xia

Executive Manufacture / Cai Xiaohu

Publisher / Huazhong University of Science and Technology Press

Address / No.1037 Luoyu Road, Hongshan District, Wuhan, Hubei, P.R. China

Post Code / 430074

Telephone / 027-87556096(sale) 63782221(order)

Design for Format and Cover / Shanghai Rihan Culture Propoganda Co., Ltd.

Press / Kaiji Printing Co., Ltd. Shanghai

Size of Book / 220mm× 300mm

Total Pages of Printing / 107.5

Total Words / 215 thousands

Order of Edition / The First Edition, in Aug. 2007

Order of Press / The First Edition of Press, in Aug. 2007

Price (one series) / RMB 1299.00

ISBN 978-7-5609-4054-0 / TU·155

CONTENTS

目錄

RIHAN.CC 052

TOP HOUSING / 住宅特輯

CONCEPT / 概念

SINGLE RESIDENCE / 獨立住宅

HIGH-RISE RESIDENCE / 高層社區

COMPLEX RESIDENCE / 綜合社區

RIHAN.CC 053

TOP PLAN LANDSCAPE / 規劃與景觀特輯

URBAN PLANNING / 城市規劃

DISTRICT PLANNING / 區域規劃

RESIDENCE PLANNING / 住區規劃

CONCEPT DESIGN / 概念設計

URBAN LANDSCAPE DESIGN / 城市景觀設計

URBAN LANDSCAPE / 城市景觀

RESIDENTIAL AREA LANDSCAPE / 住區景觀

RIHAN.CC 054

TOP BUSINESS / 商業特輯

COMERCIAL COMPLEX BUILDING / 綜合商業樓

SHOPPING PEDESTRIAN STREET / 商業步行街

HOTEL / 酒店

RESTAURANT CLUB & LEISURE / 餐廳 酒吧 休閒

SERVICE CENTER & BUILDING SALES OFFICE / 服務中心 售樓處

RIHAN.CC 055

TOP OFFICE.1 / 公共建築特輯

ADMINISTRATION OFFICE BUILDING / 行政辦公建築

SCIENTIFIC AND RESEARCH BUILDING / 研發建築

TRANSPORT BUILDING / 交通建築

MEDICAL BUILDING / 醫療建築

RIHAN.CC 056

TOP OFFICE.2 / 中小型辦公特輯

TOP OFFICE.2 / 中小型辦公特輯

RIHAN.CC 057

TOP OFFICE.3 / 高層辦公建築特輯

HIGH-RISE OFFICE BUILDING COLLECTION / 高層辦公建築實錄

HIGH-RISE OFFICE BUILDING ARCHITECTURE PLANS / 高層辦公建築方案

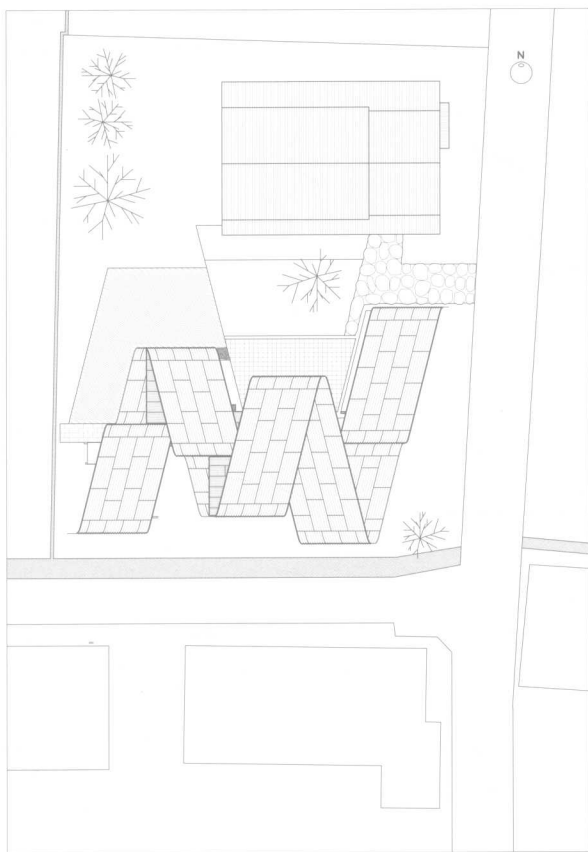
CONCEPT / 概念

- 007 Springecture Biwa / 春景·比瓦
- 013 Bubblectecture O / 泡泡·O
- 018 Wild Park / 野趣·公园
- 022 Funen / 趣·园
- 028 Lacuna / 空·隙
- 032 Design Beyond East and West AIC / Chinese Style /
DBEW / 设计·超越·东西·AIC / 中国·风格
- 036 Stacked Attics / 叠·阁
- 040 Replant / 复·植
- 044 Park House / Carstadt / 公园·住宅
- 048 HD-Plot / HD·地块
- 055 Roof Road / 屋顶·路
- 060 Pixel City / Pixel·城市
- 064 The Third Space / 第三·空间
- 065 Scenario of the Fragmented Site / 碎片·场址·情景
- 066 Lane-the Clear Brook Flowing on Dry Land / 干地·上的·清澈·溪流
urban·空间·的·流动·模式
- 067 Elimination for Morphological Sustainability / 消除·为·形态·可持续
- 068 Space Twisted / 扭曲·空间
- 070 Continuable Union / 持续·联合
- 071 Follow the Path / 跟随·路径
- 072 Again Outside / 再次·户外

TOP HOUSING

住宅特輯

CONCEPT
概念



This is a proposition which consists of various spatial com-positions produced in a simple gesture, continuous band in spiral form. Roof, wall, and slab are made of this discontinuous chain. Initially, we arranged and examined what was the necessary space. Then, in order to cover them, we have prepared every part in a factory and connected them with bolt at the site. The systematic field work shortened the construction duration and cut cost. Actually, the "Springecture Biwa" was "self-built" (built by ourselves).

Corrugated steel plate is an effective material in civil engineering structure to build structurally independent arc. Therefore, we made use of corrugated steel plate in attempt to produce large space with least materials. We believe that the composition with minimal components contributes to economic rationality.

Suitability for regional environment is from points of views of society, history, and culture.

This building has contiguous spatial relationship with the adjacent wooden houses, which brings a subtle change to ecological environment. For example, Mt.Ibuki as viewed from the building setting as a beautiful landscape backdrop pleases our perception. Additionally, the east side of old street, as crowded with visiting of neighbours redefines renewed connection with them. We planned the building preconceiving big volume of visitors and made provisions to use two buildings as one by placing grass court with a pine tree in-between wooden houses and this building opened up to each other.

This building consists of chained spaces in discontinuity by locating necessary rooms into a continuous strip, forming roof, wall, and slab. We believe in the possibility of single band in providing necessary spatial features to suffice any given program, when bent.



Project Credits:

Function: Atelier house

Site area: 862 m²

Building area: 204 m²

Total floor area: 104 m²

Building coverage ratio: 24%

Floor area ratio: 12%

Stories: 2FL

Structure: steel frame, corrugated plate

Photographer: Toshiharu Kitajima

項目檔案:

用途: 工作室

占地面積: 862 m²

建築面積: 204 m²

總建築面積: 104 m²

建築覆蓋率: 24%

建築面積比: 12%

樓層數: 兩層

結構: 鋼結構, 瓦楞板

攝影: Toshiharu Kitajima

Springtexture Biwa

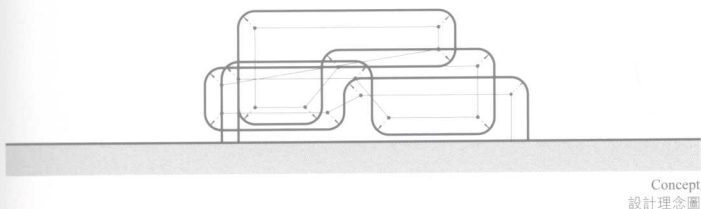
彈性築 Biwa

Architect: Shuhei Endo

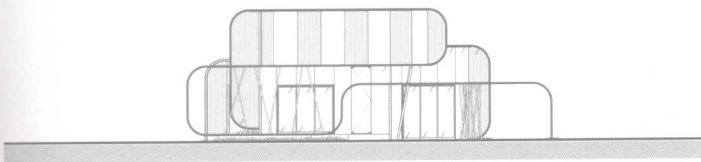
建築師: 遠藤秀平



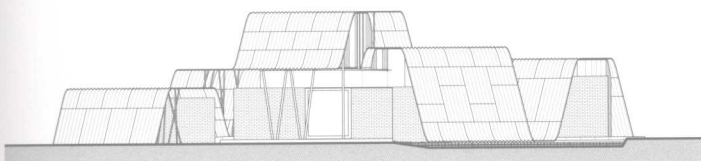




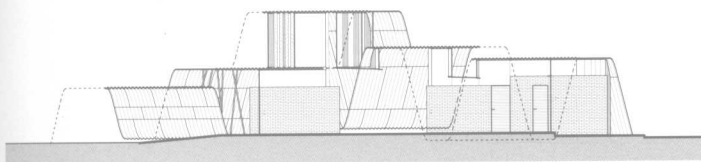
Concept
設計理念圖



East elevation
東立面圖



North elevation
北立面圖



A-A Section
A-A 剖面圖

"Springecture Harima" forms roof, wall, and slab with continuous weaving band and chains them discontinuously in a track of arc. This building, however, has a track of repetition, which combines lines and arcs. Therefore, we were able to increase efficiency in spatial use and extend the possibility of various spatial features as a result. We have explored a range of possibilities of corrugated steel plate, a self supporting material in our previous projects. The number of the projects where we used the material marks has been more than ten. Therefore, accumulation of knowledge from previous exploration has come to fruition at "Springecture Biwa". Concerns of environmental preservation on the earth and for a life cycle in buildings.

We recognize the most important factor is a study of cost reduction or least environmental load from the point of view a life-cycle in buildings.

Maintenance-free material

Corrugated plates were finished with hot-dip galvanizing which can be free from maintenance.

Recycle material

Steel plate, brick, and etc. are chosen as they can be recycled. By minimizing potential environmental load when dismembering, we have greatly reduced cost of life-cycle.

這種設計主張採用各種空間結構，以取得簡單的建築式樣和空間造型上的連續鑲邊。房頂、牆面和混凝土路面都是由這種不連續的鏈式結構組成的。我們最初布置并檢查了必須的空間，為了給這些空間設置覆蓋面，我們接着又在工廠將各個部分制成，并在場地用螺栓將其連接。系統、合理的戶外工作縮短了施工時間，節約了建築成本。事實上，“彈性築 Biwa” (Springecture Biwa) 是我們動手建設的。

瓦楞薄鋼板在土木工程結構中可以有效的建造獨立弧形的空間。因而，我們採用了瓦楞薄鋼板，從而用最少的材料建造較大的空間。我們相信，最少的建築材料可以使資源利用合理化。從社會、歷史、文化的視角來審視地區環境的適宜性

這座大樓在空間上與周圍的木房相連，這給生態環境帶來了細微的變化。例如，從建築的背景來看，伊吹山 (Mt. Ibuki) 風景優美怡人。另外，東部的老街游客雲集，產生了新的連接體。我們在規劃時就考慮到了大量的游客，充分利用兩座大樓，在木房與大樓間開闢了一片草坪，將它們連成一個整體。

這座大樓通過將不同房間成排建造，構建房頂、牆面和地板，從而形成了鏈狀的空間結構。我們相信，這樣就可以根據需要為任何計劃項目設計出足夠的空間。

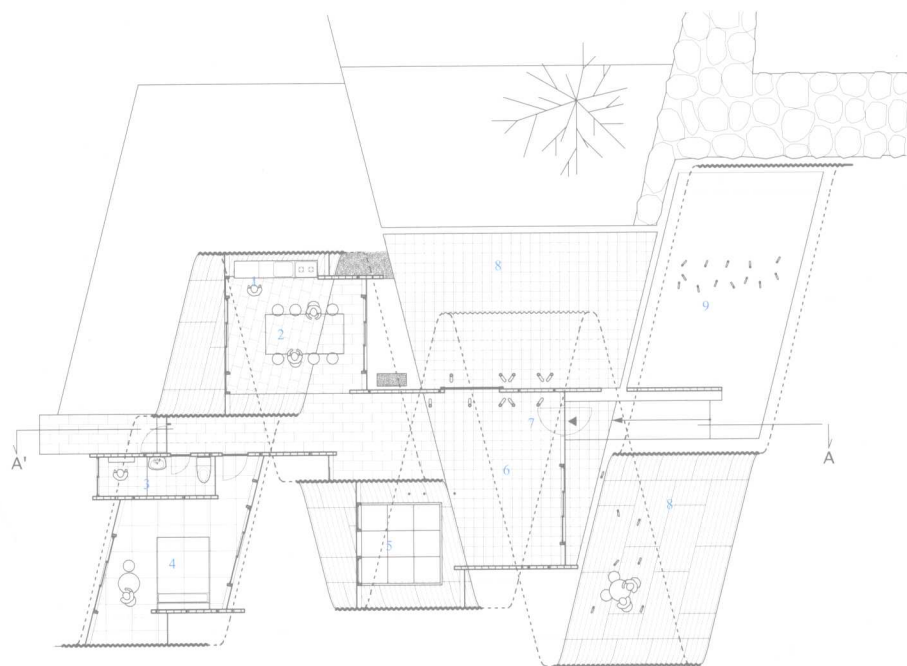
“播磨化學株式會社彈性築” (Springecture Harima) 在構建房頂、牆面和地板時採用了波狀結構，并用弧形走廊將它們連為一體。然而，這座大樓內建有集綫條和弧綫于一體的迂回走廊。因此，我們可以有效地利用空間，盡量擴大各個空間的容量。我們曾經試用過大量的瓦楞薄鋼板，這是在前期建設中被重用的支撐材料。我們已經在至少十項工程中採用過這種材料。因而，我們將在以前的探索中積累的經驗付諸實踐，設計出了“彈性築 Biwa” (Springecture Biwa)。我們從建築的使用年限的角度着手，找到了壓縮開支、減少對環境產生不良影響的最重要的決定因素。

免維護材料

瓦楞鋼板經過熱浸洗鍍鋅出爐，不需維護。

可回收材料

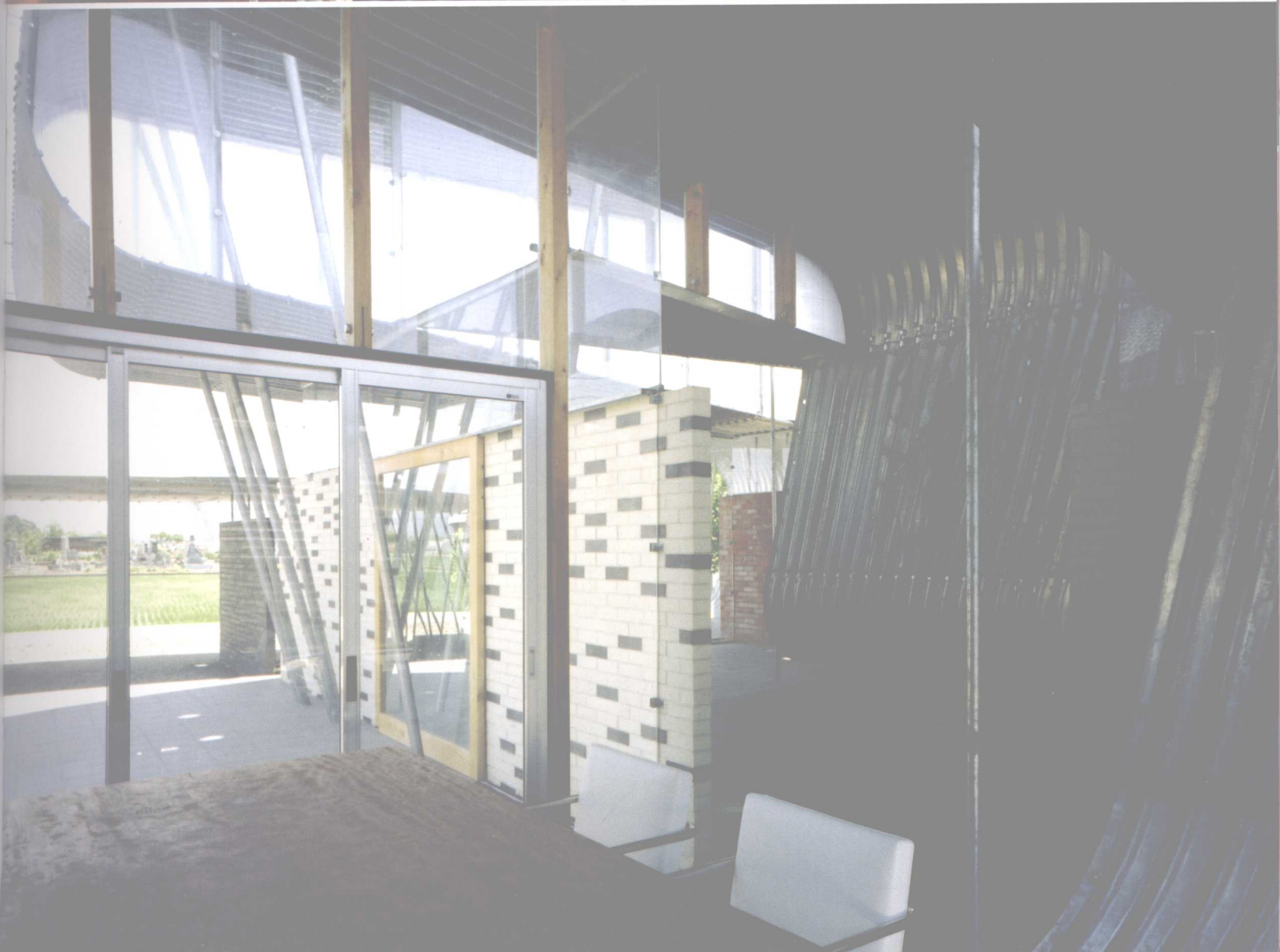
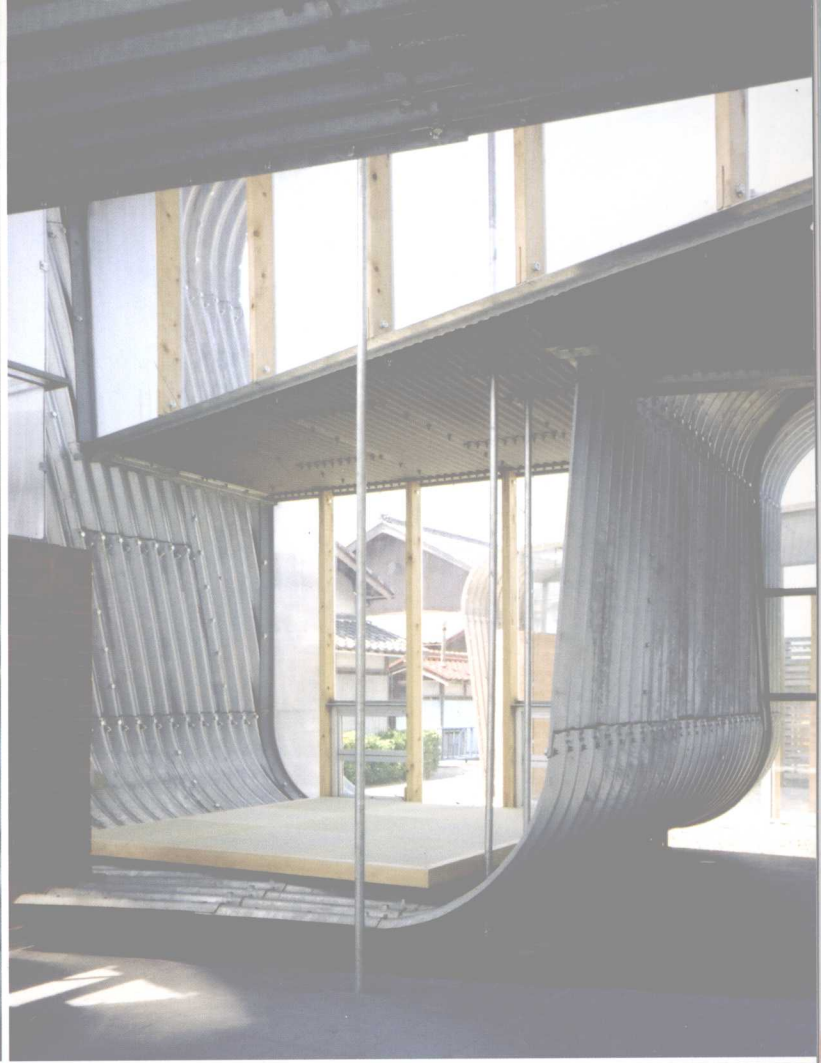
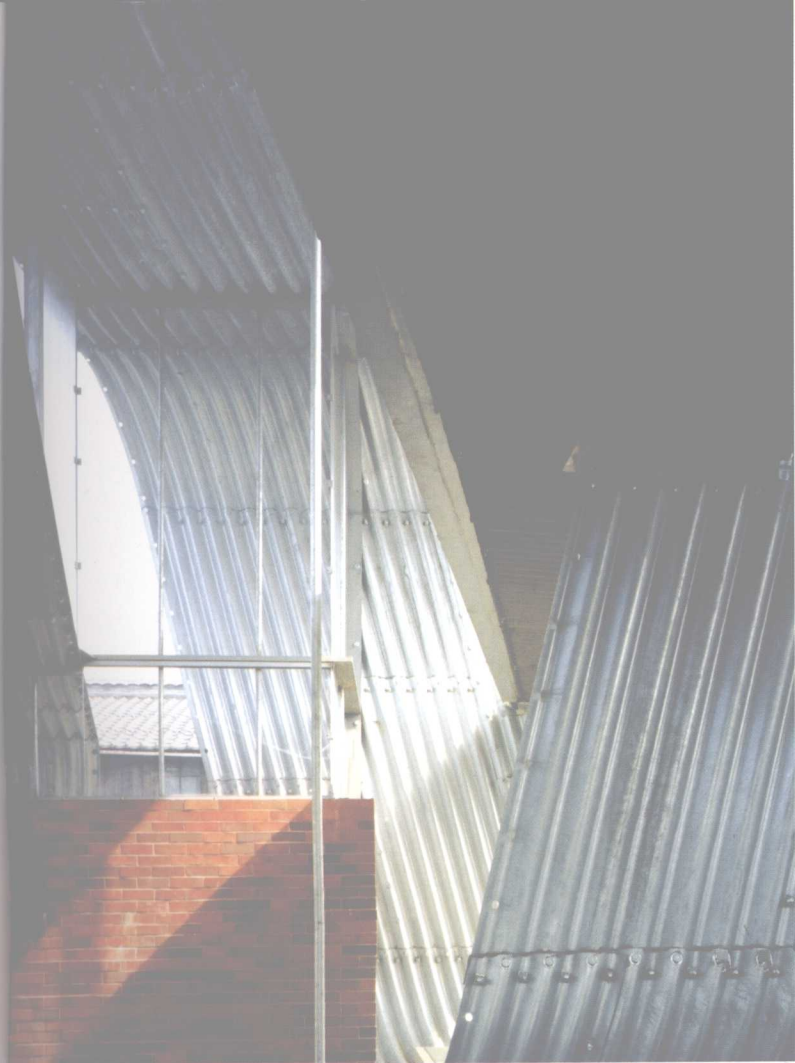
選用鋼板、磚塊等可回收材料，可最大限度地減少對環境的影響，拆遷大樓時的開支。

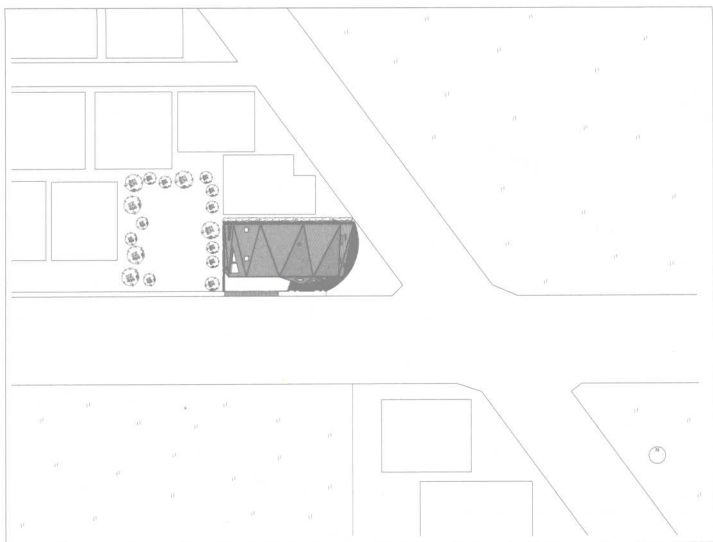


1. Kitchen
2. Dining room
3. Sanitary space
4. Bed room
5. Rest space
6. Gallery
7. Entrance
8. Terrace
9. Parking

1. 厨房
2. 餐廳
3. 衛生間
4. 臥室
5. 休息室
6. 畫廊
7. 入口
8. 陽臺
9. 停車場

Ground floor plan
底層平面圖





Project Credits:

Function : Residence facility
 Site area : 140 m²
 Total floor area : 227 m²
 Building coverage ratio : 70%
 Floor area ratio : 162%
 Stories : 2FL
 Structure : Steel frame
 Photographer : Yoshiharu Matsumura

項目檔案:

用途：住房設施
 占地面積：140 m²
 總建築面積：227 m²
 建築覆蓋率：70%
 建築面積比：162%
 樓層數：兩層
 結構：鋼結構
 攝影：Yoshiharu Matsumura

This site is a corner lot. This site is opened up in three directions except the north side.

Boards of triangular shape constitute extruding skin into four directions (the East, the West, the South, the sky) and form a roof and a wall. Thus, a difference is found within these two elements, roof and wall.

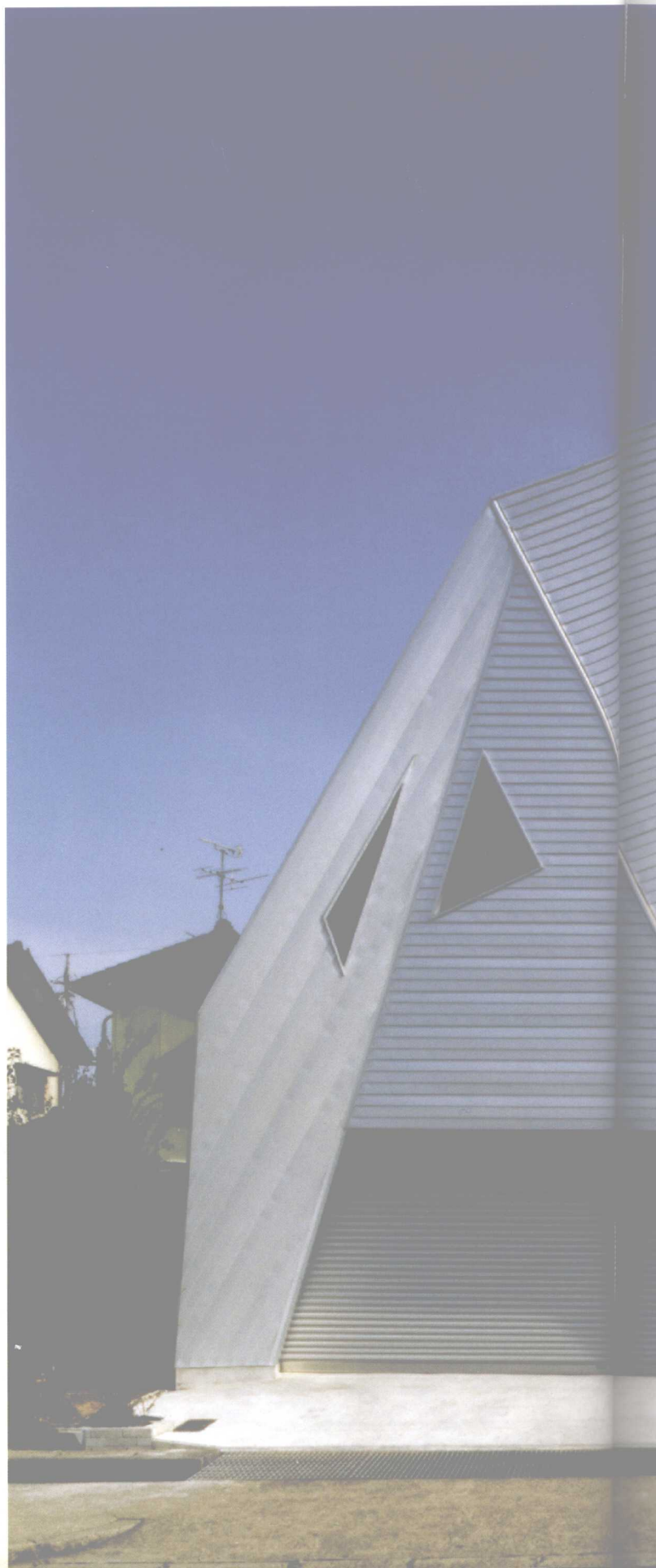
19 triangle sides composed of three main materials flank each other at varying angles. A decoration obi turning at these different angles in zigzag is visible from the outside as well as from the inside.

Air space made by sash continues as triangular shapes are conjoined by free joint. The space is defined by complex relation of three main materials attached to each other at various contact angles. It slowly transfigures itself into an aggregate of bubbles as single triangular side becomes a module that builds bigger and more complicated skin. However, this generation principle is strictly simple.

Unlike Roofecture series that is a built-form created by continuous curved or straight element, "Bubbleecture O" is a space wrapped in exterior skin that is a patchwork of triangular sidings. In its generative process, irregularity in triangles attributes to complexity in space within.

Steady blowing air through a straw into a soap water confined in a transparent box will result in increasing of air bubbles while soap film with air bulges peacefully or splits open changing the overall form and size.

"Bubbleecture O" gives various facial expressions to the building, as well as non-homogeneity and richness to the enclosed air space.

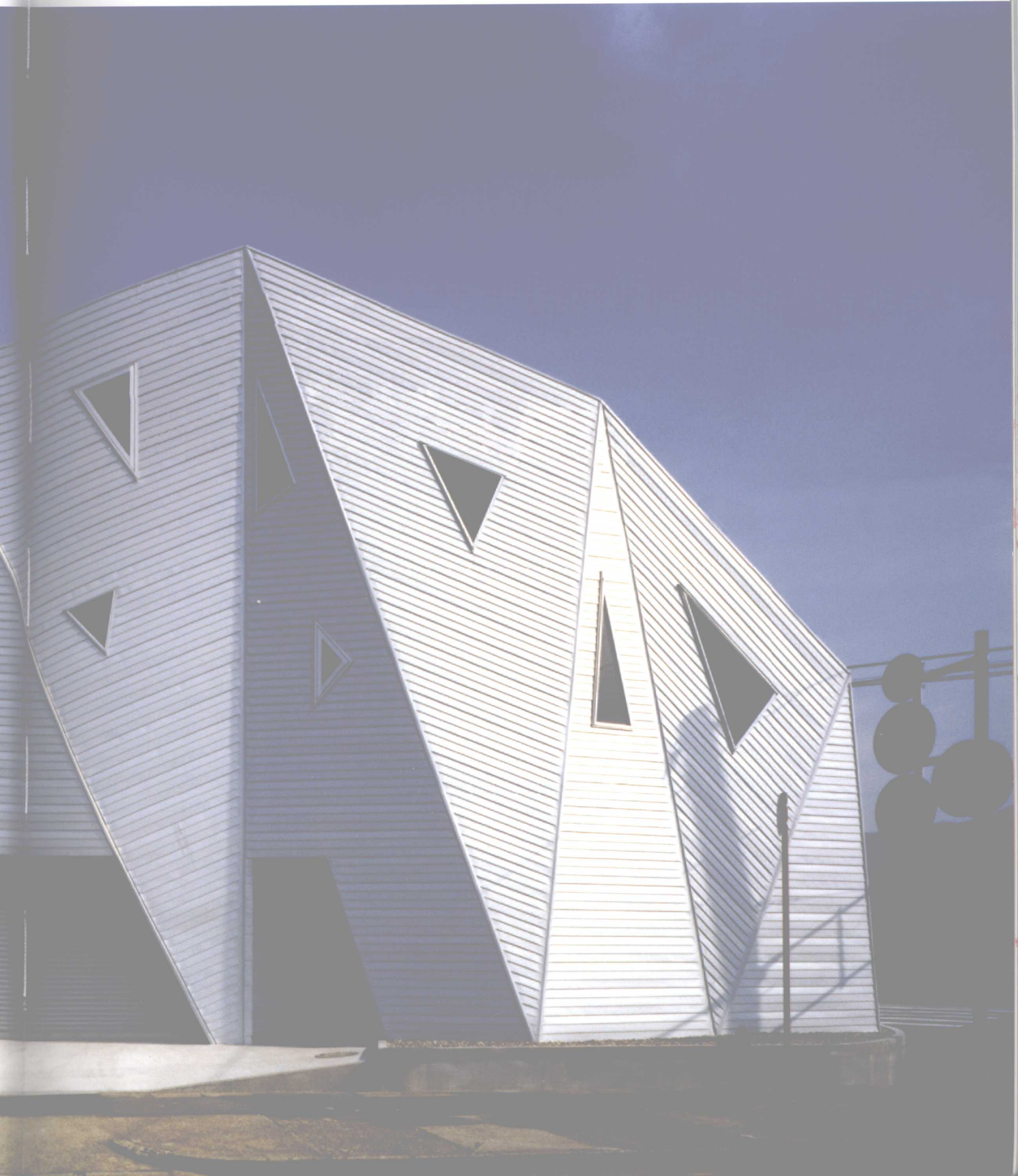


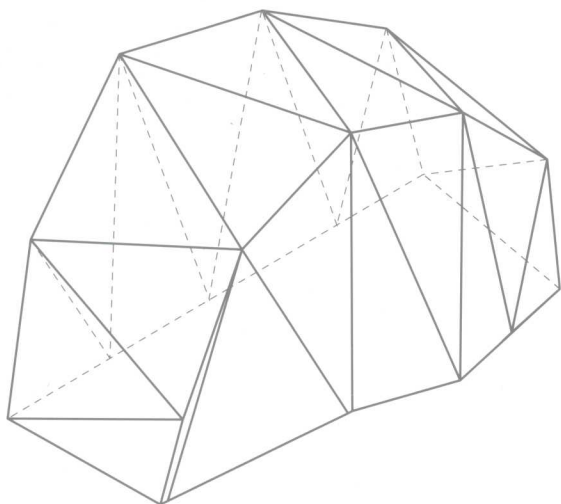
Bubbletecture O

泡泡築 O

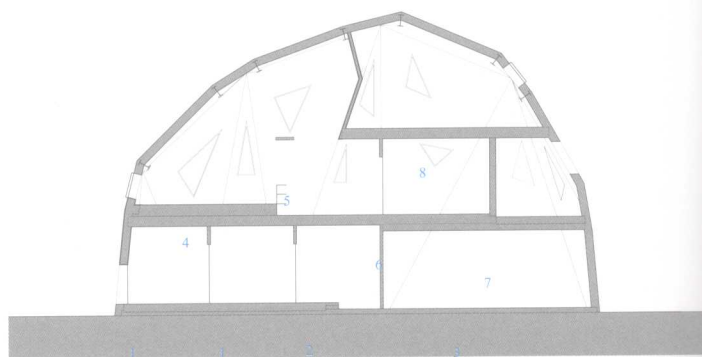
Architect : Shuhei Endo

建築師：遠藤秀平





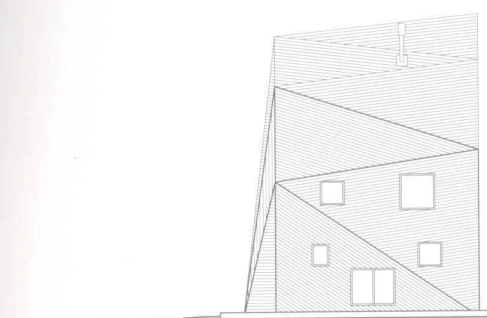
Concept
概念圖



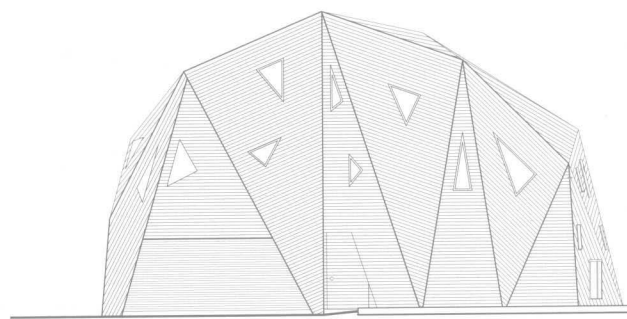
Section
剖面圖

1. Japanese style room
2. Entrance hall
3. Parking garage
4. Dining room
5. Kitchen
6. Walk-in closet
7. Terrace
8. Child's room

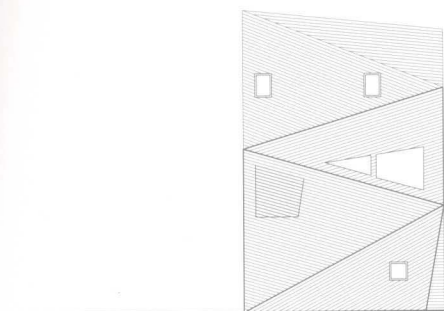
1. 日本風格的房間
2. 入口大廳
3. 車庫
4. 餐廳
5. 廚房
6. 衣物房
7. 陽臺
8. 兒童住室



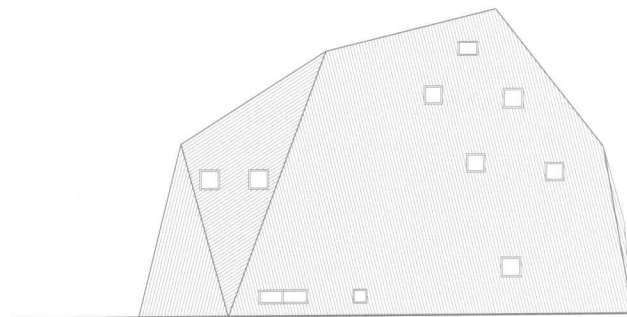
East elevation
東立面圖



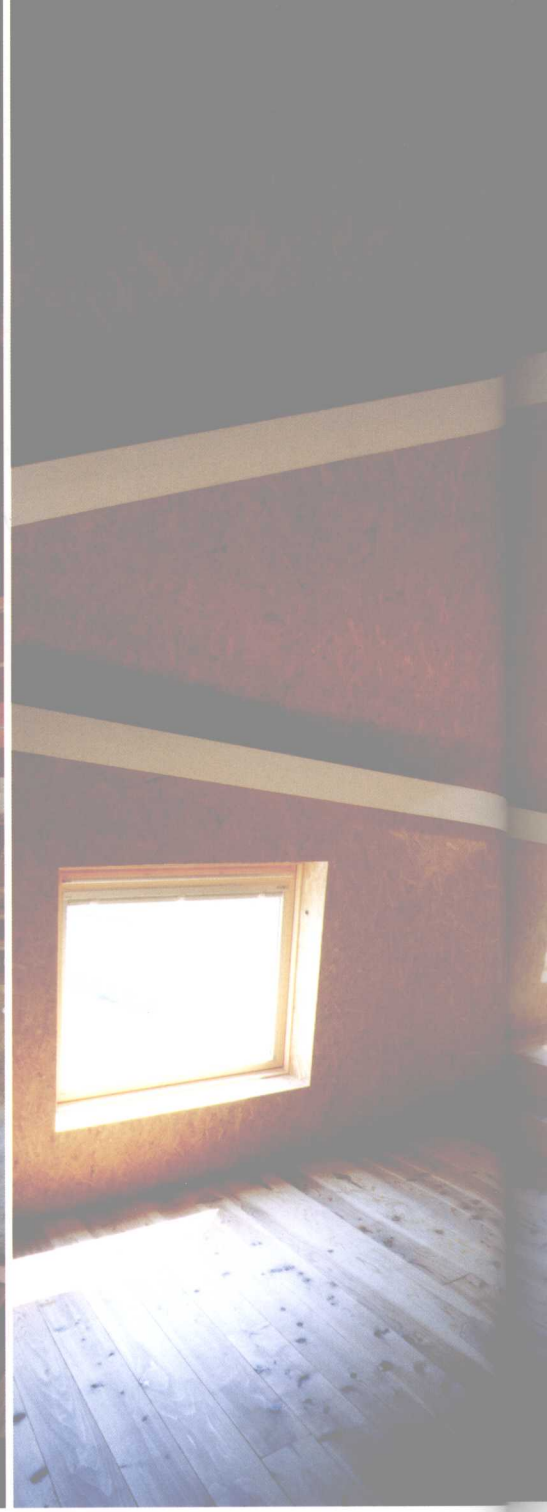
South elevation
南立面圖



West elevation
西立面圖



North elevation
北立面圖



這個場地位於拐角處，向東、西、南三個方向敞開。

三角形木板從四個方位（東、西、南、天空）嵌入建築物，構成屋頂和牆壁。這樣，屋頂和牆壁兩個部分就可區分開來。

由三種主要材料構成的十九條三角形邊緣從不同角度相互銜接。一條裝飾帶從不同角度曲折鑲嵌，從室內外都可以看出來。

由於三角形木板自然結合，窗框構成的空氣間層就可以得以延伸。從不同角度相互連接的三種主要材料決定了空間的大小。隨著單個三角形邊緣構成標準部件，使得建築表層更寬大、更複雜，空間逐漸變成一個個泡狀集

合體。但是，這種生成原則並非如此簡單。

“屋頂築”（Roofecture）系列由連續的彎曲或筆直的構件形成空間，與此不同的是，“泡泡築 O”（Bubbleecture O）是由三角形牆板拼合而成的建築外層遮蔽下的空間。這是一個生成的過程，由於內部空間變化多樣，三角形牆板就顯得不合常規。

氣流不斷通過細管吹到透明的玻璃箱中的肥皂水上，空中就不斷有肥皂泡飛舞，有的漸漸變大，有的炸開來，這就改變了整體空間的造型和大小。

“泡泡築 O”不但給大樓以各種外部特征，而且使得內部空間更加多樣，更加豐富。