

NEW LIFE-ISM HOME LIVING SPACE

新生活主义——家居生活空间

深圳市创扬文化传播有限公司 编



华中科技大学出版社

图书在版编目 (CIP) 数据

新生活主义: 家居生活空间/深圳市创扬文化传播有限公司 编.
—武汉: 华中科技大学出版社, 2010.5
ISBN 978-7-5609-6119-4
I. 新... II. 深... III. 住宅 - 室内设计 - 图集 IV. TU241-64

中国版本图书馆CIP数据核字 (2010) 第 056228 号

新生活主义: 家居生活空间

深圳市创扬文化传播有限公司 编

出版发行: 华中科技大学出版社
地 址: 武汉市珞喻路1037号 (邮编: 430074)
出 版 人: 阮海洪
责任编辑: 张 蕊
书籍设计: 万浪斌
封面设计: 万浪斌
责任监印: 马 琳
印 刷: 深圳市彩美印刷有限公司
开 本: 965mm × 1270mm 1/16
印 张: 20
字 数: 160千字
版 次: 2010年 5 月第1版
印 次: 2010年 5 月第1次印刷
书 号: ISBN 978-7-5609-6119-4/TU · 816
定 价: 258.00元 (US\$64.00)

销售电话: (010) 64155566 (兼传真), (022) 60266199 (兼传真)
邮购电话: (010) 64155588-8825
网 址: www.hustpas.com

(本书若有印装质量问题, 请向出版社发行科调换)

NEW LIFE-ISM HOME LIVING SPACE

新生活主义——家居生活空间

深圳市创扬文化传播有限公司 编

图书在版编目 (CIP) 数据

新生活主义: 家居生活空间/深圳市创扬文化传播有限公司 编.
—武汉: 华中科技大学出版社, 2010.5
ISBN 978-7-5609-6119-4
I. 新... II. 深... III. 住宅 - 室内设计 - 图集 IV. TU241-64

中国版本图书馆CIP数据核字 (2010) 第 056228 号

新生活主义: 家居生活空间

深圳市创扬文化传播有限公司 编

出版发行: 华中科技大学出版社
地 址: 武汉市珞喻路1037号 (邮编: 430074)
出 版 人: 阮海洪
责任编辑: 张 蕊
书籍设计: 万浪斌
封面设计: 万浪斌
责任监印: 马 琳
印 刷: 深圳市彩美印刷有限公司
开 本: 965mm × 1270mm 1/16
印 张: 20
字 数: 160千字
版 次: 2010年 5 月第1版
印 次: 2010年 5 月第1次印刷
书 号: ISBN 978-7-5609-6119-4/TU · 816
定 价: 258.00元 (US\$64.00)

销售电话: (010) 64155566 (兼传真), (022) 60266199 (兼传真)
邮购电话: (010) 64155588-8825
网 址: www.hustpas.com

(本书若有印装质量问题, 请向出版社发行科调换)

PREFACE

序



台北基础设计中心 总执行设计师

黄彦彦

I remember each time I open the latest magazine, I can always find marvelous interior designs. Whether in judgements of temperament, coziness or art, I can feel the dispute, conflict, contradiction and approval behind each design. From my personal view, there is no good or bad residential design, the only problem is whether the design fits the client's taste.

In a modern society, people pursue life quality. But how you define it? The answer varies according to different people's experiences and reflections. Residential community has gradually dominated the modern society. Houses with garden and backyard are rarely seen. If one can live in a house which faces the sea and lies near a mountain, his life quality must be good. Grand residence evolves into collective residence which has increased functions, but decreased area. The first step for residential design is to consider from everyday life's need: too many sundries in our daily life arouse much importance to be placed orderly, at the same time, attentions should be paid to the integration of vision and function. It is difficult to realize all the functions in unconscious way.

Residence is a private space, so its style completely depends on the client's personality. With the highly developed media such as internet and books, most people can get much information easily, and they have their own demand for personal styles and lifestyles. As a result, besides professional advices, designers should help to provide client with more suitable lifestyle, for example, the flowing line could systematize one's daily life while concealing storage and other functions.

As for life quality, it begins with the choosing of contractor, different contractors can offer different resources, construction dimensions and project qualities; Then, the living functions, forms of surrounding, i.e. CVS, greenery and garden layout; the last is the grade licensed by developer, including equipments, functions, degree of safety and environmentalism. Those above should be paid attention to before purchasing a house. Many of the problems are professional, so the client had better consult professionals before buying a house so as to avoid some minor problems.

Let's go back to residential life style. Urban life features with diet and fast pace, therefore, practical functions and appearance should be adjusted in their proportion. Besides open style kitchen, it's suggested that one customize the interior design according to his own life style for the worktop and bar counter, even for a Chinese-style kitchen and Western-style kitchen. A beautiful and practical space can be presented through appropriate choice and matching of decorations. Sound and video equipment are also valued by people nowadays, so before design, the client should often chat with the designer to find out his best life style. With the improvement of life quality, client has sometimes to give up the old habit and establish a new one to keep up with the space. It's also advised to buy something interesting to make life more colorful.

If you are interested in interior design, why not read more professional magazines? There are many know-hows for your reference, and you may gain some unexpected treasures.

记得每一次翻开新一季的杂志，总是可以看到令人惊艳的住宅设计，无论是个性、温馨或是艺术，都可以感受到每个设计背后的争执、冲突、矛盾、认同，住宅作品从个人观点来说没有好或不好，而是适合或不适合的问题。

现代的生活讲求质量，质量的定义为何，根据个人的生活体验与感受有所不同。集体式小区生活，已渐渐成为现代化社会的生活方式，鲜少能有前庭后院，现代住宅如能面海、靠山，这样才能称上好的生活质量。从前的大宅院，演化成集合式住宅，功能需求增加了，但是面积却相对减少了。住宅设计的第一步即是从生活需求考虑；生活中的杂物相当多，收纳计划非常重要，同时必须兼顾视觉与功能的整合，如何能做到无感觉的存在，就是一个大难题。

住宅是一种私密性空间，风格完全取决于客户的个性，网络、书籍的发达，大部分的人都能轻易的吸收大量的资源，对于风格、生活方式等都会有自己的需求，设计师这时候除了专业上的建议，也要为客户提供适当的生活方式，比如说透过设计动线，把一日的生活流程系统化，在动线中，暗藏了收纳、实用等功能。

提到生活质量，第一步就要从建商(开发商)挑选开始，不同规模的建商(开发商)能提供的资源相对不同，建筑量体、施工质量同样有异；第二就是生活机能，地域周遭的型态，相关的生活便利店等，包含是否规划绿地、公园等；第三即是建商(开发商)为开发案订定的等级，包含了提供的室内设备、功能、安全性、环保性等。上述为购屋时应注意之问题，里面的专业问题非常多，建议购屋前如能与相关专业人士咨询，可避免无谓的问题。

回到住宅生活型态，都市化的生活大多为轻食、快节奏，所以实用功能与美观此时就该做比例调整，比如厨房与用餐空间，除了开放式厨房，更应为自己的生活方式量身订做需要的环境，像是工作台面或是吧台，甚至可区分中式西式厨房，因应不同的需求，透过适当的挑选、搭配，就能呈现一个美观又实用的空间，视听设备也为现代人所重视，故在设计开始之前，多与设计师聊天，找出最适合自己的生活方式。生活质量的提升，有时需要客户先能放弃原有的生活习惯，建立新的习惯并保持空间环境，添购适合自己的逸品，增添生活情趣。

建议喜欢室内设计的朋友们，可以多翻阅专业的杂志，里面会有许多的诀窍供你参考，甚至会有意想不到的收获。

NEW LIFE ISM

HOME LIVING SPACE

新生活主义

家居生活空间

CON TENTS

目录



Chinese Courtyard

The Duplex House of YILI Beautiful Mountain Complex

Top Floor Apartment of LIKING Royal

Enchanting Turn of Lights and Shadows

Changsha NUDT Homes

Cheerful Quietness

Memory

Show Flat for Yi Hui Garden

Private Clubhouse for Sea Sight Residences

Changshu OLD Street Developed by Shanghai Greenland Group

Shadow

Modern Times

Roman Holiday

Fung's Residence in the Promise

Grey·Mainstream

Beautiful Scenery with Mountains and Rivers

Magnificent Mansion

Vanke Stratford 6-1

The Home of Designer

Sunco Blues II

Modern New Rich

Meet Madrid Unexpectedly

中国院子

亿力秀山某复式住宅

丽景豪庭顶楼公寓

光影轮转的魅惑

长沙科大家园

怡静

记忆

颐慧佳园样板房

观海居私人会所

上海绿地常熟老街

影

摩登时代

罗马假日

履幸福冯公馆

灰·主流

美丽山水

美庐锦园

万科红郡6#1

设计师之家

顺驰蓝调(二)

摩登新贵

邂逅马德里

006

014

022

030

038

044

050

058

064

070

078

084

092

100

106

114

122

130

138

144

150

158



Changsha Tuscany	长沙托斯卡纳	166
Imposing Mansions in Qu Jiang,Xi'an	西安曲江尚林园	172
Chan's Residence in Changsha Raycom	长沙融科陈宅	180
Tse's Mansion in Hsinchu	新竹谢公馆	188
Love in a Fallen City	倾城之恋	194
That Summer	那年夏天	202
Natural Garden	大自然花园	210
David Gorgeous Lights	大卫彩光	214
Magnificent Landscaper	山水华门	220
Vista Mandarin	瑞景文化	226
No.1 park Road	公园道一号	234
City Corner	城市角落	242
Harmony Source Residence II	和源居 (二)	248
Crystal Love	水晶之恋	254
No.1 Park Road	公园道1号	260
Gloria Garden	巨洋花园	266
Poon's House in DAZHI	大直潘邸	274
Water Town Beautiful Area	江南水都美域	280
WUYI Oasis	武夷绿洲	288
Sample Room for Villa#81 in Top View Lakeland,WUXI	无锡湖玺庄园别墅81号样板房	296
The 80s	80年代	304
Wuhan Bund Palm Springs	武汉外滩棕榈泉	312

C

中国院子 CHINESE COURTYARD



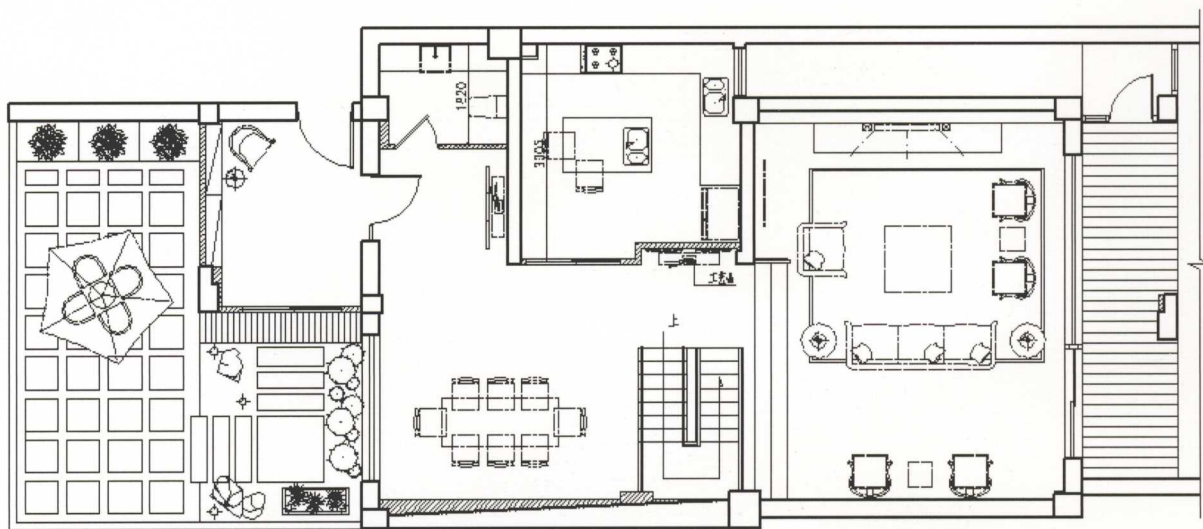
张欢：设计 师
张欢室内建筑：设计公司
武汉市汉正街98号：公司地址
湖北武汉：项目地址
220平方米：建筑面积
墙纸、地板、楼梯：主要材料
吴辉：摄影 师

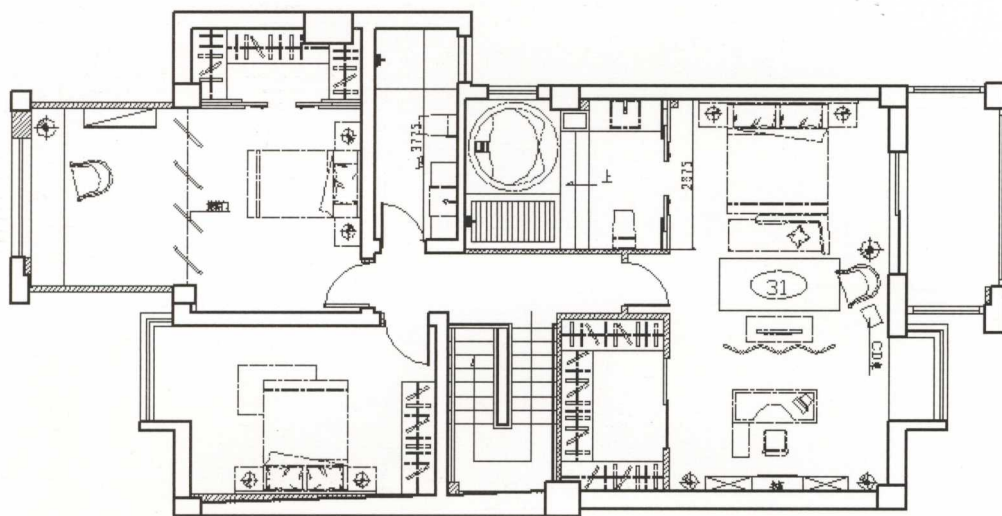
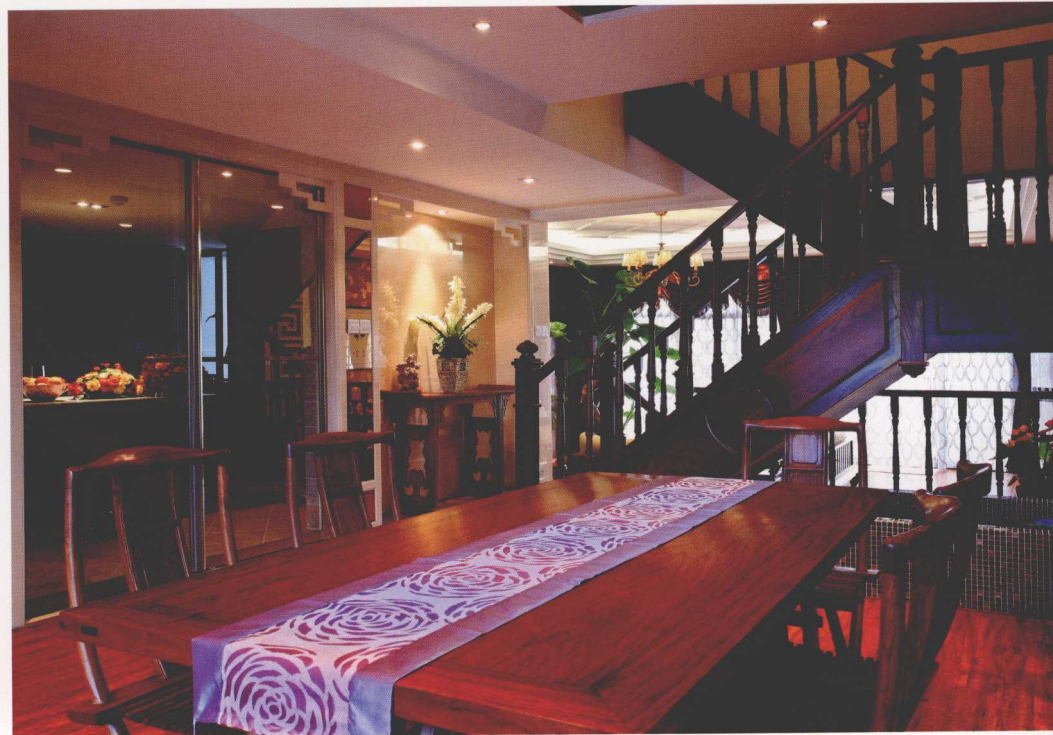


As the house is far away from a busy city geographically, the owner required the designer to make the space show the feeling and atmosphere of a home. The most special thing is one scene appears with moving step and another step leads to another scene, walking from entrance hall, foyer, dinning room to the inward step by step not only allows family members and friends to enjoy a visual feast but also taste the cultural atmosphere of the house, experiencing the owner's deep cultural foundation.

It's not a luxury to grow lotus at home any more. In the artificial pool beside dinning room, lotuses are in a bloom, fishes are playing, what a vigorous view. Through the designer's meticulous arrangement, natural scenes in front terrace and back courtyard have everything that one expects to find, slopes, grassy areas, plants. Natural and artificial, exterior and interior compliment with and respond to each other in a perfect way. Home-in which a hill looks around emotionally and water winds interestingly.















本居室的地理位置远离闹市，主人要求设计者能够让空间体现出一种家的感觉与氛围。移步一景，再移步再一景，是最特别之处，门厅、玄关、餐厅，一步步走来，除了能够让亲朋好友欣赏到一场视觉盛宴之外，还能品味出这套居室的文化气息，并感受到房屋主人深厚的文化底蕴。

家中养荷，不再是奢望。餐厅边的人造水池，有荷花的绽放，也有鱼儿的嬉戏，一派生气勃勃的景象。前露台后庭院的自然景观，经过设计者的细心雕琢，坡地、果岭、植被，应有尽有。自然与人造，室外与室内，相得益彰，互相呼应，恰到好处。

家——山顾盼有情，水曲折有致。

T

亿力秀山某复式住宅

THE DUPLEX
HOUSE OF YILI
BEAUTIFUL

MOUNTAIN COMPLE



叶斌：方案审定
刘建达、黄小华：设计 师
福建国广一叶建筑装饰设计工程有限公司家装6所：设计公司
福州：项目地址
280平方米：建筑面积
米黄大理石、木地板、通体砖、红橡木面、墙纸：主要材料



The house integrates two generation's different thoughts and ideas, therefore, how to coordinate the owners' thoughts and finalize design scheme has become the key to the project. The first floor is designed as modern minimal Chinese style by maximizing the utilization of spatial structure and striving to make individual space connect with each other to achieve the effect of view borrowing and view changing with steps. Wooden grid partition and tearoom greatly enhance the charm of Chinese space, enriching visual effect. The second floor is boldly adopted with the design catering to younger generation, where broke through space and layout display modern young people's life taste, cultivation and open, free lifestyle. In the bathroom, convenient, technical living and minimal modern aesthetic are shown perfectly.

