

中国传世玉器全集

CHINESE JADES IN TRADITIONAL COLLECTIONS

8

清

QING



科学出版社

www.sciencep.com

中国传世玉器全集

Chinese Jades in Traditional Collections

古方/主编

Gu Fang

8

清

Qing

科学出版社

北京

目 录

CONTENTS

清代(续)

- | | |
|---------------|--|
| 1 弦纹玉尊 | <i>Zun</i> Vessel with Raised Lines |
| 2 兽面纹玉尊 | <i>Zun</i> Vessel with Animal Masks |
| 3 兽面纹玉鼎 | <i>Ding</i> Tripod with Animal Masks |
| 5 兽面纹玉鼎 | <i>Ding</i> Tripod with Animal Masks |
| 6 兽面纹翡翠鼎 | <i>Ding</i> Tripod with Animal Masks |
| 7 兽面纹玉簋 | <i>Gui</i> Container with Animal Masks |
| 8 兽面纹玉簋 | <i>Gui</i> Container with Animal Masks |
| 9 兽面纹玉簋 | <i>Gui</i> Container with Animal Masks |
| 10 龙纹玉爵 | <i>Jue</i> Wine Vessel with Dragons |
| 11 兽面纹玉爵 | <i>Jue</i> Wine Vessel with Animal Masks |
| 12 蕉叶纹玉觚 | <i>Gu</i> Vessel with Descending Leaves |
| 13 螭龙纹玉觚 | <i>Gu</i> Vessel with Felines |
| 14 兽面纹玉觚 | <i>Gu</i> Vessel with Animal Masks |
| 15 兽面纹玉觚 | <i>Gu</i> Vessel with Animal Masks |
| 16 螭纹玉觚 | <i>Gu</i> Vessel with Felines |
| 17 龙凤海棠纹玉觚 | <i>Gu</i> Vessel with a Dragon, a Phoenix and Begonias |
| 18 人物异兽纹玉觚 | <i>Gu</i> Vessel with Figures and Animals |
| 19 夔柄玉觚 | <i>Gu</i> Vessel with a Dragon Handle |
| 20 龙纹兽形玉觥 | Beast-shaped <i>Gong</i> Vessel with Dragons |
| 21 双螭纹玉觥 | <i>Gong</i> Vessel with Double Felines |
| 22 水晶双螭纹觥 | <i>Gong</i> Vessel with Double Felines |
| 23 缠枝莲纹玉提梁卣 | <i>You</i> Vessel with Lotuses |
| 24 翡翠龙纹提梁卣 | <i>You</i> Vessel with a Handle and Dragons |
| 25 蕉叶谷纹玉卣 | <i>You</i> Vessel with Grains |
| 26 莲鹭荷叶形玉卣 | <i>You</i> Vessel with Lotuses and an Aigrette |
| 27 凤首衔梁玉卣双耳玉瓶 | Vase with Double Handles and <i>You</i> Vessel with a Phoenix Holding a Handle |
| 28 龙纹玉瓶 | Vase with and a Dragon a Poem |
| 29 凤螭纹双联玉瓶 | Two Connected Vases with a Phoenix and Felines |
| 30 饕餮纹贯耳玉瓶 | Vase with Tubular Handles and <i>Taotie</i> Animal Masks |
| 31 兽面纹玉瓶 | Vase with Animal Masks |
| 32 兽面纹玉瓶 | Vessel with Animal Masks |
| 33 梅花纹玉瓶 | Vase with Plum Blossoms |
| 34 盘龙戏珠纹玉瓶 | Vase with a Dragon Playing with a Fire Ball |
| 35 荷花纹玉瓶 | Vase with Lotuses |
| 36 花卉山石纹玉瓶 | Vase with Flowers and Rocks |
| 37 兽面纹玉扁瓶 | Vase with Animal Masks |
| 38 双凤耳玉瓶 | Vase with Double Phoenix Handles |
| 39 梅花纹玉瓶 | Vase with Plum Blossoms |
| 40 兽面纹玉瓶 | Vase with Animal Masks |
| 41 龙凤纹玉瓶 | Vase with a Dragon and a Phoenix |

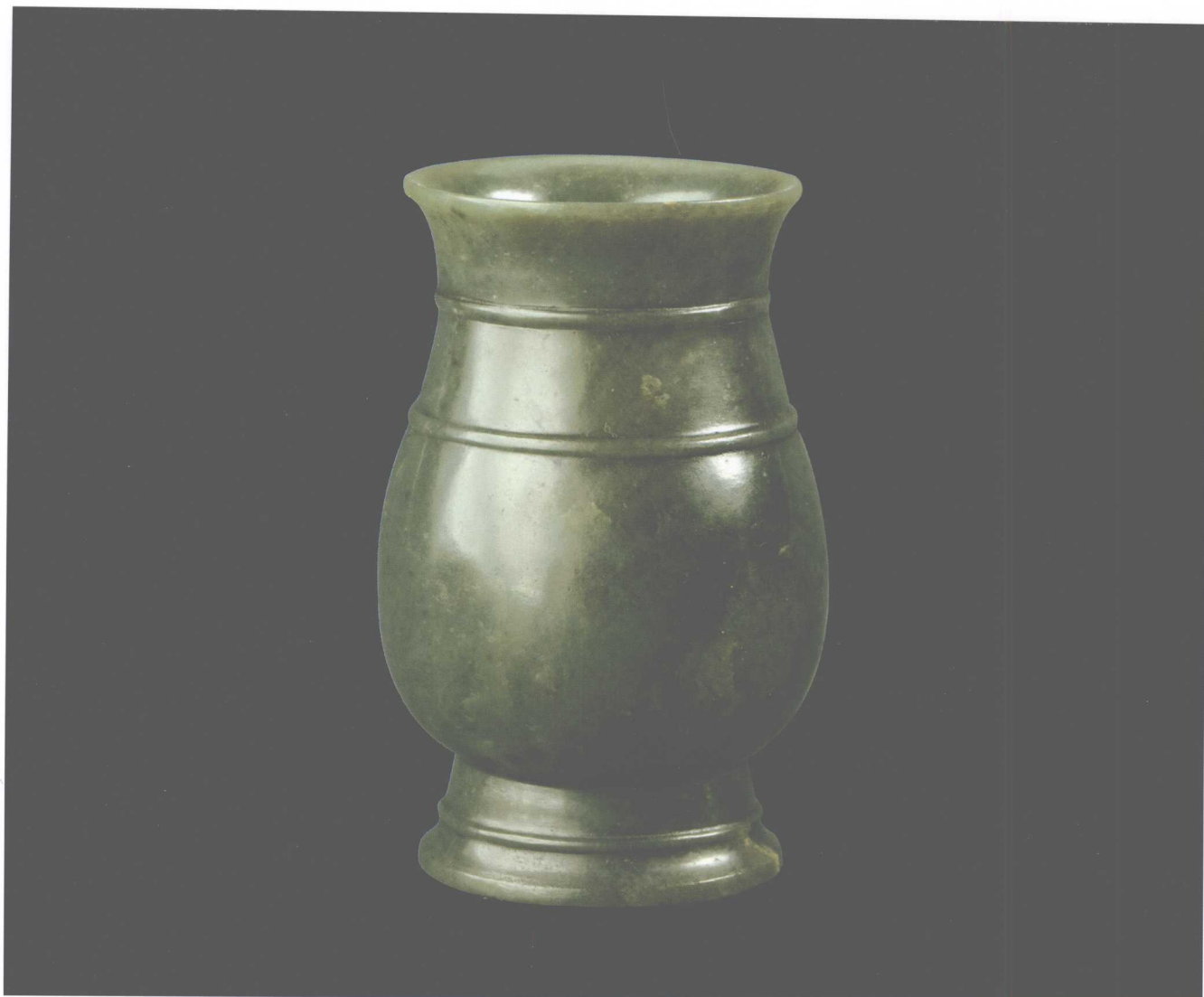
- 42 龙凤纹玉瓶
43 麒麟座玉扁瓶
44 龙凤纹玉瓶
45 盘龙纹宝月形玉瓶
46 花鸟纹玉瓶
47 山水人物纹玉瓶
48 莲蝉纹玉梅瓶
49 兽面纹玉瓶
50 兽面纹玉瓶
51 描金兽面纹贯耳玉瓶
52 四耳环链玉瓶
53 兽面纹玉瓶
54 莲瓣纹玉瓶
55 花鸟纹玉瓶
56 凤螭纹玉瓶
57 花果纹玉瓶
58 饕餮纹玉瓶
59 童子葫芦形玉瓶
60 双联玉瓶
61 龙纹玉瓶
62 兽面纹玉瓶
63 兽面纹玉瓶
64 童子纹玉瓶
65 兽面纹玉瓶玉盒
66 云纹龙首玉瓶
67 蕃莲纹玉瓶
68 龙螭纹玉瓶
69 翡翠兽衔活环耳瓶
70 水晶花鸟纹瓶
71 芙蓉石松鹤纹瓶
72 珊瑚兽面莲纹瓶
73 兽面纹玉执壶
74 双凤形玉执壶
75 玉执壶
76 花瓣纹玉执壶
77 福寿纹葫芦形玉执壶
78 鹿首玉壶
79 獬豸形玉壶
80 蕃莲纹玉壶
81 莲瓣纹玉执壶
82 蕃莲纹玉执壶
83 嵌金丝花草纹玉壶
84 芙蓉石喜鹊登梅纹壶
85 团花纹五环玉罐
86 团龙松鹤纹玉盒
87 寿字纹玉盒
88 牡丹纹玉盒
89 五蝠捧寿纹玉盒
90 寿字纹玉盒
- Vase with a Dragon and a Phoenix
Vase with *Qilin* Chinese Unicorn-shaped Base
Vase with a Dragon and a Phoenix
Vase with Dragons
Vase with Birds and Flowers
Vase with Mountains Landscape
Vase with Lotuses and Cicadas
Vase with Animal Masks
Vase with Animal Masks
Vase with Handles and Animal Masks Tracing in Gold
Vase with Four Loops and a Chain
Vase with Animal Masks
Vase with Lotus Petals
Vase with Flowers and Birds
Vase with a Phoenix and a Feline
Vase with Flowers and Fruits
Vase with *Taotie* Animal Masks
Vase in the Shape of a Gourd with Boys
Two Connected Vases
Vase with Dragons
Vase with Animal Masks
Vase with Animal Masks
Vase with Boys
Vase and Box with Animal Masks
Vase with Clouds and a Dragon Head Base
Vase with Lotuses
Vase with a Dragon and a Feline
Vase with Beasts Holding Loop Rings
Vase with Birds and Flowers
Vase with Pines and Cranes
Vase with Animal Masks and Lotuses
Wine Ewer with Animal Masks
Wine Ewer with Two Phoenixes
Wine Ewer
Wine Ewer with Flower Petals
Gourd-shaped Wine Ewer with a Character and Bats
Wine Ewer with a Deer Head
wine Ewer in the Shape of *Xiezhi* Imaginary Beast
Wine Ewer with a Lid, Loop Rings, Four Feet and Lotuses
Wine Ewer with Lotus Petals
Wine Ewer with Lotuses
Vessel with Flowers and Gold Inlaid
Vessel with Magpies Standing on Prune Trees
Jar with Five Rings and Flowers
Box with Dragons, Cranes and Pines
Box with a Character, Flowers and Birds
Box with Peonies
Box with Five Bats around a Character
Box with a Character

- 91 花卉纹玉盒 Box with Flowers
92 如意云纹玉盒 Box with Clouds
93 莲花形双层玉盒 Lotus-flower-shaped Containers
94 莲瓣纹玉盒 Container in the Shape of a Lotus Flower
95 玉胭脂盒 Cosmetic Box
96 鹌鹑形玉盒 (1对) Pair of Quail-shaped Boxes
97 石榴形玉盒 Pomegranate-shaped Box
98 螭龙纹五格玉盒 Box with Five Cells and Felines
99 花卉纹环形玉盒 Ring-shaped Box with Flowers
100 梅花形六格玉盒 Plum-blossom-shaped Box with Six Cells
101 花卉纹玉香熏 Censer with Flowers
102 八宝纹玉香熏 Censer with Eight Treasures
103 云龙纹玉香熏 Censer with a Dragon in Clouds
104 翡翠花卉纹盒 (1对) Pair of Boxes with Flowers
105 篮纹玉鼻烟壶 Snuff Bottle with Basket Weaves
106 锦囊形玉鼻烟壶 Bag-shaped Snuff Bottle
107 山水诗文纹玉鼻烟壶 Snuff Bottle with Landscape and a Poem
108 白猿献寿玉鼻烟壶 Snuff Bottle with a Monkey Holding a Peach
109 仕女图玉鼻烟壶 Snuff Bottle with a Beauty
110 双龙纹玉鼻烟壶 Snuff Bottle with Double Dragons
111 花卉蝴蝶纹玉鼻烟壶 Snuff Bottle with Flowers and Butterflies
112 拳形玉烟嘴 Fist-shaped Cigarette Holder
113 佛手形玉鼻烟壶 Snuff Bottle in the Shape of a Buddha's Hand Citron
114 蝙蝠形玉鼻烟壶 Bat-shaped Snuff Bottle
115 鱼形鼻烟壶 Fish-shaped Snuff Bottle
116 兔形玉鼻烟壶 Rabbit-shaped Snuff Bottle
117 山形玉鼻烟壶 Mountain-Shaped Snuff Bottle
118 翡翠鼻烟壶 Snuff Bottle
119 玛瑙鼻烟壶 Snuff Bottle
120 发晶鼻烟壶 Snuff Bottle
121 寿字纹玉鼻烟壶 Snuff Bottle with a Characters
122 喜鹊登梅翡翠鼻烟壶 Snuff Bottle with Magpies Standing on a Prune Tree
123 翡翠瓜形鼻烟壶 Melon-shaped Snuff Bottle
124 玛瑙鼻烟壶 Snuff Bottle with a Coral Lid
125 玛瑙鼻烟壶 (3件) Snuff Bottle (3 Pieces)
126 玛瑙钓鱼纹鼻烟壶 Snuff Bottle with Fishing Scene
127 刘海戏金蟾玛瑙鼻烟壶 Snuff Bottle with *Liuhai* Immortal Playing with a Golden Toad
128 佛手形玛瑙鼻烟壶 Snuff Bottle in the Shape of a Buddha's Hand Citron
129 珊瑚福寿纹鼻烟壶 Snuff Bottle with Bats, Peaches and a Character
130 琉璃神话人物纹鼻烟壶 Snuff Bottle with Immortals
131 桃蝠纹套料玉鼻烟壶 Snuff Bottle with Peaches and Bats
132 玉烛台 (1对) Pair of Candlesticks
133 海晏河清玉烛台 Candlestick in the Shape of a Swallow
134 珐琅风挡玉烛台 (1对) Pair of Candlesticks with Enamel Windscreens
135 玉灯盏 Lamp
136 玉灯盏 (1对) Pair of Lamps
137 云龙纹三镶玉冠架 Hat Support with Inlaid Three Jade Plaques and Dragons, Clouds
138 翡翠螭衔环形帐钩 (1对) Pair of Bed-curtain Hooks with a Feline Holding a Ring Design
139 花叶纹玉经架 Stand for Islam Book with Flowers and Leaves

- 140 嵌白玉船形紫檀首饰盒 Ship-shaped Jewelry Box with Inlaid Jade Ornaments
141 玉围棋子 Pieces of Go Chess
142 猪肉形石 Pork-shaped Rock
143 翡翠七弦琴 Zither
144 云龙纹玉摆件 Boulder with Dragons and Clouds
145 龙纽玉玺 Imperial Seal with a Dragon Handle
146 “皇帝之宝”玉玺 Imperial Seal with Four Characters
147 龙纽玉玺 Imperial Seal with a Dragon Handle
148 龙纽玉印 Seal with a Dragon Handle
149 狮纽水晶印 Seal with a Lion-shaped Handle
150 狮纽水晶印 Seal with a Lion-shaped Handle
151 龙纽玉印 Seal with a Dragon Handle
152 “慈禧皇太后之宝”玉玺 Seal of *Cixi* Empress Dowager
153 龙纽玉玺 Seal with a Dragon Handle
154 羊纽玉印 Seal with a Ram Handle
155 兽纽玉印 Seal with a Beast-shaped Handle
156 童子纽玉印 Seal with a Boy-shaped Handle
157 龟纽玉印 Seal with a Turtle-shaped Handle
158 拱形纽玉印(2件) Seals with an Arched Handle (2 Pieces)
159 龙纽翡翠印 Seal with a Dragon Handle
160 云瀑飞枫图玉笔筒 Brush Pot with Mountains Landscape
161 “岁寒三友图”玉笔筒 Brush Pot with Pines, Bamboos and Plum Blossoms
162 山水人物纹玉笔筒 Brush Pot with Figures in Mountains Landscape
163 蝠鹿灵芝纹玉笔筒 Brush Pot with Bats, Deer and Ganoderma
164 高士图玉笔筒 Brush Pot with a Scholar in Mountains Landscape
165 童戏纹玉笔筒 Brush Pot with Playing Children
166 梅花纹玉笔筒 Brush Pot with Plum Blossoms
167 花鸟纹玉笔筒 Brush Pot with Flowers and Birds
168 鹤鹿同春玉笔筒 Brush Pot with Cranes and Deer
169 玉笔筒 Brush Pot
170 山水人物纹玉笔筒 Brush Pot with Mountains Landscape
171 山水人物纹玉笔筒 Brush Pot with Mountains Landscape
172 山水人物纹玉笔筒 Brush Pot with Mountains Landscape
173 仙山楼阁纹玉笔筒 Brush Pot with Mountains Landscape
174 盆花形寿山石笔筒 Flowerpot-shaped Brush Pot
175 紫毫玉提笔(1对) Pair of Brushes
176 玉提笔 Brush
177 玉笔杆 Shaft of Brush
178 桥形玉笔架 Bridge-shaped Brush Rest
179 凤竹纹玉笔架 Brush Rest with a Phoenix and Bamboos
180 五子登科玉笔架 Brush Rest in the Shape of Five Boys
181 三峰形玉笔架 Brush Rest in the Shape of Three Mountain Peaks
182 三峰形玉笔架 Brush Rest in the Shape of Three Mountain Peaks
183 双鹅玉笔架 Brush Rest in the Shape of Double Geese
184 三阳开泰玉笔架 Brush Rest in the Shape of Three Rams
185 竹节纹玉臂搁 Arm Rest in the Shape of a Bamboo Joint
186 竹节形玉臂搁 Arm Rest in the Shape of a Bamboo Joint
187 花鸟诗文玉臂搁(1对) Pair of Arm Rests with Flowers, Birds and a Poem
188 松竹纹玉臂搁 Arm Rest with Pines and Bamboos

- | | |
|----------------|--|
| 189 凤竹纹玉臂搁 | Arm Rest with a Phoenix and Bamboos |
| 190 仕女纹玉臂搁 | Arm Rest with a Beauty |
| 191 古琴形玉臂搁 | Arm Rest in the Shape of a Zither |
| 192 御制诗文玉镇纸 | Paper-weight with Poems |
| 193 双龙纹玉镇纸 | Paper-weight with Double Dragons |
| 194 桃鹤纹玉砚 | Inkslab with Peaches and a Crane |
| 195 翡翠花蝶纹双层砚 | Double Layers of Inkslab with Flowers and Butterflies |
| 196 荷叶形玉砚 | Inkslab in the Shape of a Lotus Leaf |
| 197 螭纹玉洗 | Brush Washer with Felines |
| 198 福庆寿纹玉洗 | Brush Washer with a Character and Bats |
| 199 龙凤纹玉洗 | Brush Washer with Dragons and Phoenixes |
| 200 鱼纹玉洗 | Brush Washer with Fish |
| 201 双鱼纹玉洗 | Brush Washer with Double Fish |
| 202 螭纹玉洗 | Brush Washer with Felines |
| 203 蝶耳玉洗 | Brush Washer with Butterfly Handles |
| 204 莲鱼纹玉洗 | Brush Washer with Fish and Lotus |
| 205 四耳活环玉洗 | Brush Washer with Four Handles and Rings |
| 206 蜻蜓环耳双联玉洗 | Two Connected Brush Washers with Dragonflies Holding Rings |
| 207 松纹玉洗 | Brush Washer with Pines |
| 208 婴戏图玉洗 | Brush Washer with Playing Boys |
| 209 五子登科纹玉洗 | Brush Washer with Five Boys |
| 210 翡翠腊梅卧犬纹洗 | Brush Washer with a Dog and Wintersweet |
| 211 回纹方形玉洗 | Square Brush Washer with Square Spirals |
| 212 四足玉洗 | Brush Washer with Four Feet |
| 213 如意耳桃形玉洗 | Peach-shaped Brush Washer with <i>Ruyi</i> Handles |
| 214 莲花形玉洗 | Lobed Brush Washer |
| 215 莲荷鱼蛙纹玉洗 | Brush Washer in the Shape of a Lotus Leaf with a Frog and a Fish |
| 216 瓜形玉洗 | Brush Washer in the Shape of a Melon |
| 217 瓜形玉洗 | Brush Washer in the Shape of a Melon |
| 218 荷叶形玉洗 | Brush Washer in the Shape of a Lotus Leaf |
| 219 灵芝形玉洗 | Brush Washer in the Shape of a Glossy Ganoderma |
| 220 葫芦形玉洗 (1对) | Pair of Brush Washers in the Shape of Gourds |
| 221 葵花形玉洗 | Brush Washer in the Shape of a Sunflower |
| 222 荷叶形玉洗 | Brush Washer in the Shape of a Lotus Leaf |
| 223 灵芝形玉洗 | Brush Washer in the Shape of a Ganoderma |
| 224 桃形玉洗 | Brush Washer in the Shape of a Peach |
| 225 松鹤纹玉洗 | Brush Washer with Pines and Cranes |
| 226 莲纹玉洗 | Brush Washer with Lotus |
| 227 蕃莲纹八棱形玉洗 | Lobed Brush Washer with Lotus |
| 228 寿桃形玉洗 | Brush Washer with Peaches and a Character |
| 229 蕉叶形玉洗 | Brush Washer in the Shape a Banana Leaf |
| 230 翡翠菊花纹洗 | Brush Washer with Chrysanthemums |
| 231 玛瑙花瓣形洗 | Brush Washer in the Shape of Flower Petals |
| 232 玛瑙桃形洗 | Brush Washer in the Shape of a Peach |
| 233 玛瑙荷叶形洗 | Brush Washer in the Shape of a Lotus Leaf |
| 234 玛瑙叶形洗 | Brush Washer in the Shape of Two Leaves |
| 235 玛瑙松梅纹洗 | Brush Washer with Pines and Plum Blossoms |
| 236 犀牛玉砚滴 | Ink Well in the Shape of a Rhinoceros |
| 237 鹤形玉水丞 | Ink Well in the Shape of a Seated Crane |

238	云龙纹玉水丞	Ink Well with Dragons and Clouds
239	双螭耳玉水丞	Ink Well with Double Felines
240	玛瑙蟠龙纹水丞	Ink Well with Dragons
241	天禄形玉水丞	Ink Well in the Shape of <i>Tianlu</i> Imaginary Beast
242	天禄形玉砚滴	Ink Well in the Shape of <i>Tianlu</i> Imaginary Beast
243	鹤形玉水丞	Ink Well in the Shape of a Crane
244	桃形玉水丞	Ink Well in the Shape of a Peach
245	双桃形玉水丞	Ink Well in the Shape of Double Connected Peaches
246	三阳开泰玉水丞	Ink Well with Three Rams
247	菊花形玉水丞	Chrysanthemum-shaped Ink Well
248	双螭纹水丞	Ink Well with Double Felines
249	象形玉水丞	Ink Well in the Shape of an Elephant
250	桃形玉水丞	Ink Well in the Shape of a Peach
251	五子登科纹玉水丞	Ink Well with Five Playing Boys
252	花卉纹玉水丞	Ink Well with Flowers
253	宝相花纹玉印盒	Container for Ink Paste with Rosettes
254	螭纹玉印盒	Container for Ink Paste with Felines
255	双联玉印盒	Two Connected Containers for Ink Paste
256	玛瑙印盒	Container for Ink Paste



弦纹玉尊

清代

高10.8、口径5.8、底径5厘米

现藏于福建博物院

玉质青碧色，细腻温润。侈口，短颈，长椭圆形腹，高圈足外张，颈部、肩部、圈足分别雕刻有三道凸弦纹。

（撰文：林丹 摄影：黄海）

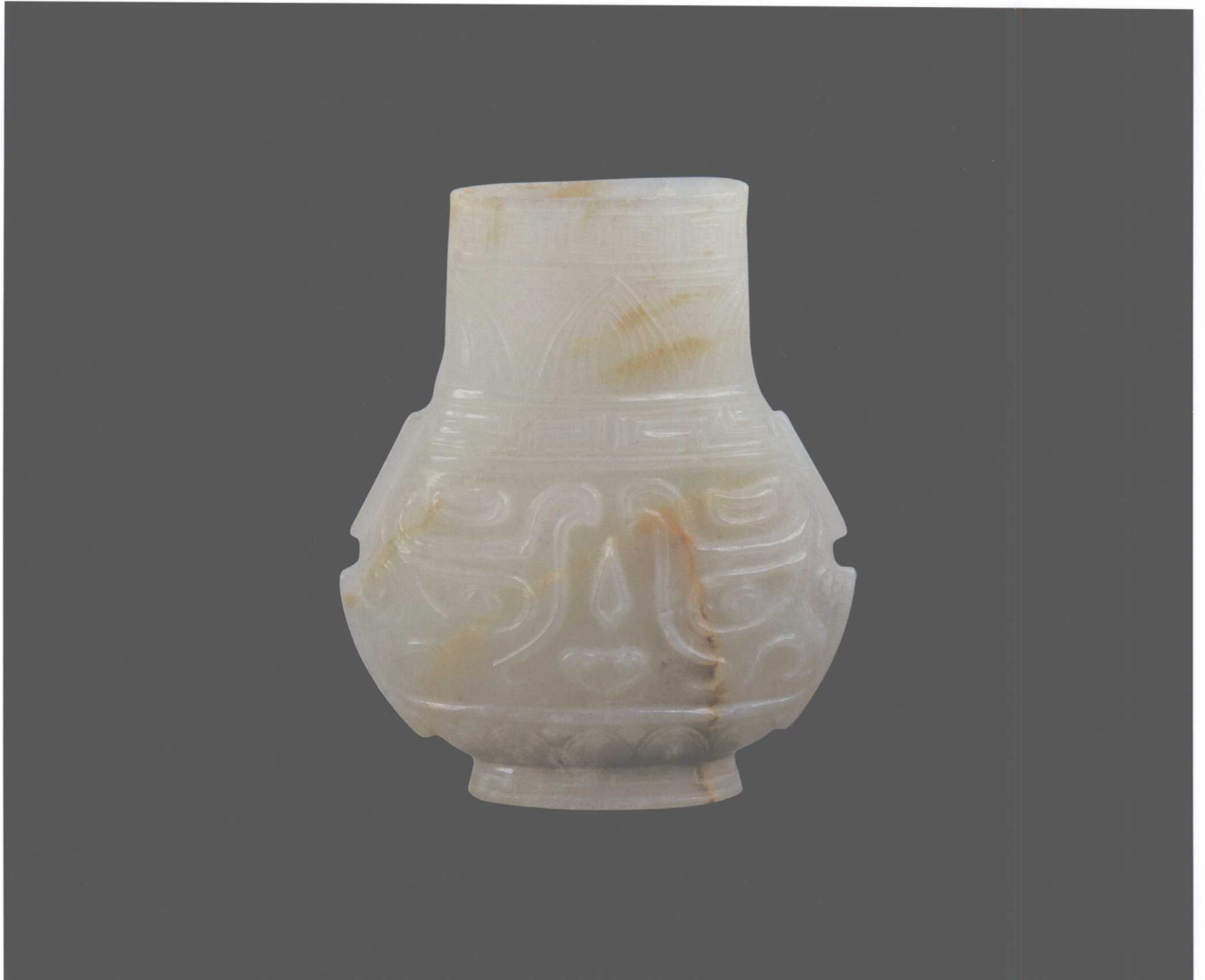
Zun Vessel with Raised Lines

Qing Dynasty

Jade

Height 10.8 cm

Fujian Museum



兽面纹玉尊

清代

高9.3、宽7.5、厚3.5厘米

现藏于常熟博物馆

青玉，有黄色沁斑。仿古彝器造型。主体浅浮雕兽面纹，口沿、肩部及足部饰回纹，颈、腹部饰蕉叶纹和仰莲纹。每组图案均用阴刻栏线分隔，圈足较高。因用籽料随形琢空而成，瓶颈角度略有偏位。

(撰文：陈颖 摄影：邹建东)

Zun Vessel with Animal Masks

Qing Dynasty

Jade

Height 9.3 cm

Changshu Museum



兽面纹玉鼎

清代

高19.4、宽17.4厘米

现藏于天津博物馆

玉质青白色。鼎的两侧各有一立耳；腹部浮雕兽面纹，四足刻有兽面纹和蕉叶纹。玉鼎造型仿商周青铜器雕琢，为清代仿古玉佳作。

（撰文：曹平 摄影：贾凡）

Ding Tripod with Animal Masks

Qing Dynasty

Jade

Height 19.4 cm

Tianjin Museum



兽面纹玉鼎

清乾隆时期

高27、长26、宽14.7厘米

现藏于西藏博物馆

玉质碧绿色，凝重深沉。由整块碧玉琢制而成。直口，平唇，立耳，束颈，腹略宽，平底，下承四柱足。颈、腹有对应的八道凸戟。口外沿饰一周阴刻回纹，颈部浅浮雕一周蝉纹，腹部两面以云雷纹作地，浅浮雕兽面纹，足上部浅浮雕云纹。底部有“乾隆年制”双行四字阴刻款。此鼎形制较大，规整浑厚，是乾隆年间仿古彝器的精品。

(撰文: 巴桑潘多、严晓勤 摄影: 严钟义)

Ding Tripod with Animal Masks

Qianlong Period, Qing Dynasty

Jade

Height 27 cm

Tibet Museum





兽面纹翡翠鼎

民国

通高26、口径8.3~14.5厘米

现藏于北京颐和园

翡翠质地，色泽莹润。鼎盖可与鼎身分开。盖顶部雕有狻猊纽，形象生动，四周雕有夔凤等纹饰；鼎身两侧雕有龙耳、活环，正背面雕有兽面纹，古朴神秘。方鼎用料厚重，采用减地浅浮雕、镂雕、透雕、线刻等技法，雕琢细致精美。

（撰文：周尚云 摄影：杨京京）

Ding Tripod with Animal Masks

The Republic Period

Jadeite

Total Height 26 cm

Beijing Summer Palace



兽面纹玉簋

清代

通高12.5、口径11.1、底径8.2厘米

现藏于武汉博物馆

玉质青色。分为身、盖两部分，盖顶空心，雕仰莲纹，盖面雕兽面纹。口沿外镂空雕两兽首耳，接于腹部。腹部雕兽面纹。高圈足，圈足内外凸雕一周覆莲纹。造型古朴典雅，纹饰规整精细。

(撰文：吴力群 摄影：左易正)

Gui Container with Animal Masks

Qing Dynasty

Jade

Total Height 12.5 cm

Wuhan Museum



兽面纹玉簋

清代

通高14.8、通耳宽21.8、口径15.2厘米

现藏于辽宁省博物馆

碧玉质。仿青铜簋式样，椭圆体，透雕龙首形双耳，兽吞式三足，有盖。器腹与盖的外壁浮雕兽面纹下压雷纹地，盖纽透雕云龙纹。玉色深沉，器体厚重，极具青铜器庄重肃穆的韵味。

（撰文：周晓晶 摄影：林利）

Gui Container with Animal Masks

Qing Dynasty

Jade

Total Height 14.8 cm

Liaoning Provincial Museum



兽面纹玉簋

清代

通高8.9、宽13.9、口径8厘米

现藏于天津博物馆

玉质青白色，纯净无瑕。簋盖为八瓣花形捉手，圆口椭圆腹，盖与腹均刻以雷纹为地的兽面纹，镂雕两龙首作耳，椭圆圈足。造型模仿商周青铜器，琢工至精。

(撰文：徐春苓 摄影：贾凡)

Gui Container with Animal Masks

Qing Dynasty

Jade

Total Height 8.9 cm

Tianjin Museum