

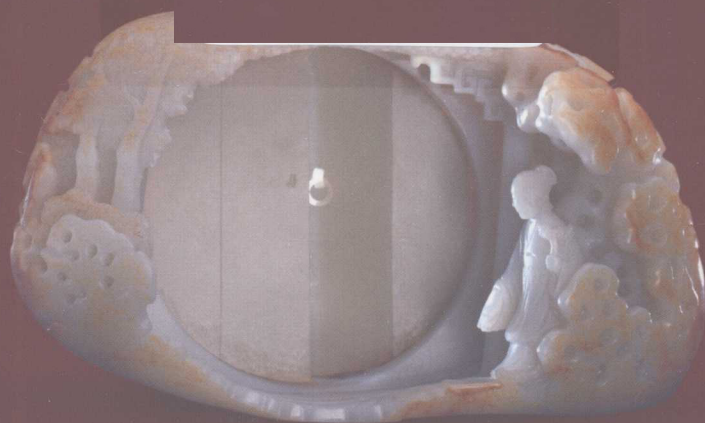
# 中国传世玉器全集

CHINESE JADES IN TRADITIONAL COLLECTIONS

7

清

QING



科学出版社  
www.sciencep.com

# 中国传世玉器全集

Chinese Jades in Traditional Collections

古方/主编

Gu Fang

— ◆ 7 —

清

Qing

科学出版社

北京

# 目 录

## CONTENTS

### 清代(续)

- |              |   |
|--------------|---|
| 1 翡翠人物诗文插屏   | Table Screen with Figures and a Poem  |
| 2 平金川碑文玉插屏   | Table Screen with Inscriptions  |
| 3 平准噶尔碑文玉插屏  | Table Screen with Inscriptions  |
| 4 三阳开泰玉插屏心   | Screen with Three Rams Design   |
| 5 螭纹璧形玉插屏    | Table Screen with an Inlaid Disk Decorated with Felines                           |
| 6 璧形玉插屏      | Table Screen with an Inlaid Disk and a Poem                                       |
| 7 璧形玉插屏      | Table Screen with an Inlaid Disk and a Poem                                       |
| 8 福禄寿纹玉插屏    | Table Screen with Gods of Happiness, Wealth and Longevity                         |
| 9 嵌玉饰木镜架     | Wood Mirror Stand with Inlaid Ornament in the Shape of Beasts                     |
| 10 女织图玉插屏    | Table Screen with Ladies Weaving Design   |
| 11 翡翠山水人物纹插屏 | Table Screen with Landscape and Figures   |
| 12 梅花诗文玉插屏   | Table Screen with a Branch of Plum Blossom and a Poem                             |
| 13 玉套环       | Multi-rings-shaped Sculpture  |
| 14 携琴访友图玉座屏  | Table Screen with a Man and a Boy Holding Zither for Visiting a Friend            |
| 15 玉插屏(3件)   | Two <i>Bi</i> Disks Decorated with Felines and a Gourd-shaped Sculpture           |
| 16 福禄寿纹玉屏心   | Screen with Landscape and an Old Man and a Deer Design                            |
| 17 山水人物纹玉屏心  | Screen with Landscape and Figures Design  |
| 18 宴饮图玉屏心    | Screen with Figures Enjoying Feast Design   |
| 19 山水人物诗文玉屏心 | Screen with Landscape, Figures and a Poem Design                                  |
| 20 山水诗文玉屏心   | Screen with Landscape and a Poem  |
| 21 童子洗象玉屏    | Table Screen with Boys Washing an Elephant Design                                 |
| 22 玉桐荫仕女图    | Sculpture with a Beauty Walking into a Gate Design                                |
| 24 五老游山图玉山子  | Boulder with Five Old Men Travelling in Mountains Landscape                       |
| 25 黄山飞龙峰图玉山子 | Boulder with <i>Huangshan Feilong</i> Peaks                                       |
| 26 携琴访友图玉山子  | Boulder with a Man Holding a Zither Visting His Friend in Mountains Landscape     |
| 27 戏猿图玉山子    | Boulder with Monkeys Playing in Mountains Landscape                               |
| 28 炼药仙人图玉山子  | Boulder with a Taoist Figure in Mountains Landscape                               |
| 29 榕阴高士图玉山子  | Boulder with a Scholar in Mountains Landscape                                     |
| 30 秋山行旅图玉山子  | Boulder with Travelers in Autumn Mountains Landscape                              |
| 31 浴马图玉山子    | Boulder with a Man Washing a Horse in Mountains Landscape                         |
| 32 灞桥觅句图玉山子  | Boulder with a Scholar in Mountains Landscape                                     |
| 33 白鹿洞图玉山子   | Boulder with <i>Bailu</i> Cave  |
| 35 大禹治水图玉山子  | Boulder with Water Control by <i>Dayu</i> in Mountains Landscape                  |
| 36 会昌九老图玉山子  | Boulder with Nine Old Men Meeting in <i>Huichang</i> Reign in Mountains Landscape |
| 37 采玉图玉山子    | Boulder with Excavating Jade Mine in Mountains Landscape                          |
| 38 耕读图玉山子    | Boulder with Farming and Reading in Mountains Landscape                           |
| 39 题诗玉山子     | Mountain-shaped Boulder with Poems  |
| 40 长眉罗汉玉山子   | Boulder with an Arhat in Mountains Landscape                                      |

- 41 罗汉玉山子  
42 十八罗汉玉山子  
43 松鹤人物玉山子  
44 三阳开泰玉山子  
45 山水人物纹玉山子  
46 山林隐逸图玉山子  
47 山间行旅图玉山子  
48 仙人出行图玉山子  
49 八仙图玉山子  
50 携琴访友图玉山子  
  
51 麻姑献寿图玉山子  
52 五老图玉山子  
53 老子出关图玉山子  
54 苍松骏马图玉山子  
55 观潮图玉山子  
56 松鹤图玉山子  
57 松下问路图玉山子  
  
58 松鹤人物玉山子  
59 山石松鹤玉山子  
60 山水亭台玉山子  
61 山水人物玉山子  
62 山水人物玉山子  
63 松下人物玉山子  
64 山水人物玉山子  
65 山水人物玉山子  
66 山水人物玉山子  
67 山水人物玉山子  
68 山水图玉山子  
69 山水人物玉山子  
70 松林人物玉山子  
71 松石人物玉山子  
72 松石人物玉山子  
73 松鹤人物玉山子  
74 松石人物玉山子  
75 松鹿人物玉山子  
76 鹤鹿山水玉山子  
77 松鹤鹿纹玉山子  
78 鹤鹿纹玉山子  
79 萱草灵芝纹玉山子  
80 亭台人物玉山子  
81 云龙莲鱼图玉摆件  
82 秋山行旅图玉山子  
83 龙纹玉如意  
84 古希天子玉如意  
85 寿字八宝纹玉如意  
86 福寿纹玉如意  
87 花草纹玉如意
- Boulder with an Seated Arhat in Mountains Landscape  
Boulder with Eighteen Arhats in Mountains Landscape  
Boulder with Figures in Mountains Landscape  
Boulder with Three Rams in Mountains Landscape  
Boulder with Figures in Mountains Landscape  
Boulder with a Scholar in Mountains Landscape  
Boulder with Travelers in Mountains Landscape  
Boulder with Immortals in Mountains Landscape  
Boulder with Eight Immortals in Mountains Landscape  
Boulder with a Man and a Boy Holding a Zither Visiting a Friend in Mountains Landscape  
  
Boulder with *Magu* Fairy Celebrating Birthday in Mountains Landscape  
Boulder with Five Famous Old Men in Mountain Landscape  
Boulder with *Laozi* Taoist Founder in Mountains Landscape  
Boulder with Horses in Mountains Landscape  
Boulder with Figures Watching the Tide  
Boulder with Pines and Cranes in Mountains  
Boulder with a Man Asking the Way under Pine Trees in Mountains Landscape  
  
Boulder with Pines, Cranes and Figures in Mountains Landscape  
Boulder with Pines and Cranes in Mountains  
Boulder with Mountains Landscape  
Boulder with Mountains Landscape  
Boulder with Mountains Landscape  
Boulder with Mountains Landscape  
Boulder with Mountains Landscape  
Boulder with Figures in Mountains Landscape  
Boulder with Figures in Mountains Landscape  
Boulder with Figures in Mountains Landscape  
Boulder with Mountains Landscape  
Boulder with Figures in Mountains Landscape  
Boulder with Figures in Mountains Landscape  
Boulder with Figures in Mountains Landscape  
Boulder with Figures in Mountains Landscape  
Boulder with Figures in Mountains Landscape  
Boulder with Mountains Landscape  
Boulder with Mountains Landscape  
Boulder with Mountains Landscape  
Boulder with Mountains Landscape  
Boulder with Figures and Pavilions in Mountains Landscape  
Mountain-shaped Carving with Dragons, Fish, Lotuses and Clouds  
Boulder with Travelers in Autumn Mountains Landscape  
*Ruyi* Scepter with a Dragon Plaque  
*Ruyi* Scepter with Characters  
*Ruyi* Scepter with a Character and Eight Treasures  
*Ruyi* Scepter with a Bat and a Knot  
*Ruyi* Scepter with Flowers

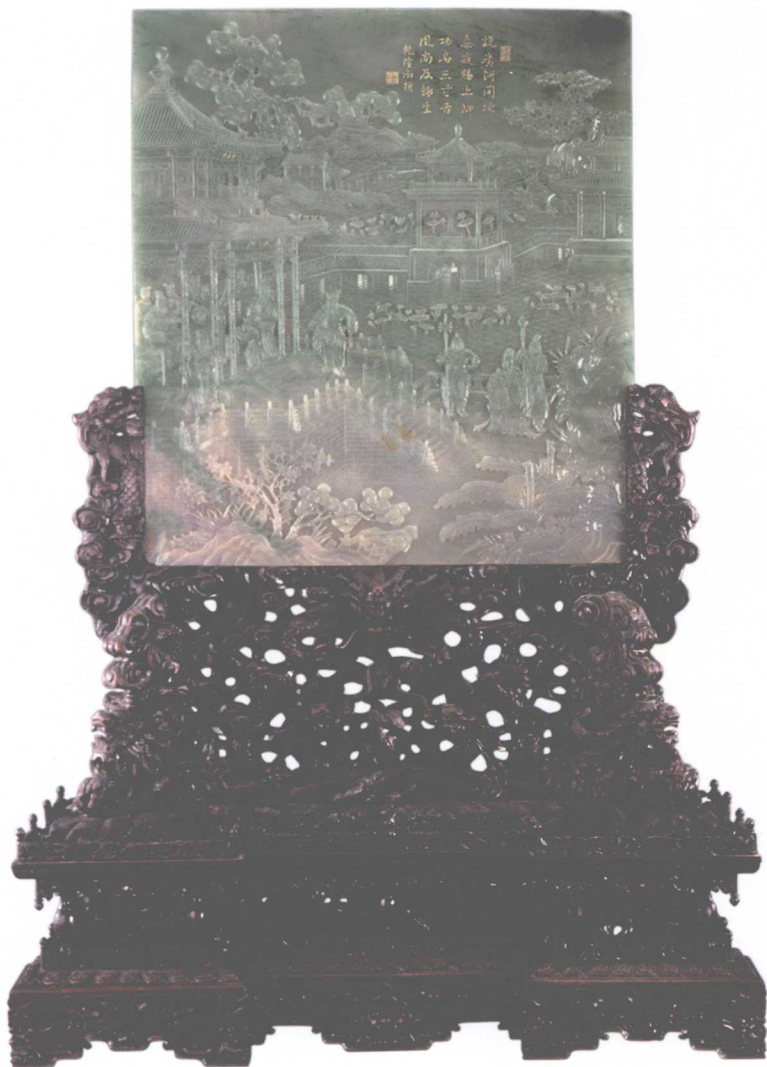
88	松鹤蝠灵纹玉如意	<i>Ruyi Scepter with a Pine, a Crane, a Bat and a Gynophores</i>
89	双鱼蝠桃纹玉如意	<i>Ruyi Scepter with Double Fish and a Peach</i>
90	云蝠纹玉如意	<i>Ruyi Scepter with Bats and Clouds</i>
91	福禄寿纹玉如意	<i>Ruyi Scepter with a Peach, a Citron and a Bat</i>
92	山水人物纹玉如意	<i>Ruyi Scepter with Mountains Landscape</i>
93	螭纹翡翠如意	<i>Ruyi Scepter with Felines</i>
94	蟠龙戏珠纹玉如意	<i>Ruyi Scepter with a Dragon Playing with a Fire Ball</i>
95	海鹤添寿纹玉如意	<i>Ruyi Scepter with Sea and Cranes</i>
96	螭纹玉如意	<i>Ruyi Scepter with Felines</i>
97	吉祥如意玉如意	<i>Ruyi Scepter with Inlaid Four Characters</i>
98	兽面纹玉如意	<i>Riyi Scepter with an Animal Mask</i>
99	灵芝形玉如意	<i>Ganoderma-shaped Ruyi Scepter</i>
100	灵芝形玉如意	<i>Ganoderma-shaped Ruyi Scepter</i>
101	灵芝形玉如意	<i>Ganoderma-shaped Ruyi Scepter</i>
102	螭纹玉如意	<i>Ruyi Scepter with Felines</i>
103	卷云纹玉如意	<i>Ruyi Scepter with Clouds</i>
104	福寿纹玉如意	<i>Ruyi Scepter with Bats and Peaches</i>
105	福寿三果纹玉如意	<i>Ruyi Scepter with Bats and Fruits</i>
106	八仙人物纹玉如意	<i>Ruyi Scepter with Eight Immortal Figures</i>
107	八仙祝寿纹玉如意	<i>Ruyi Scepter with Eight Immortals Extending Birthday Congratulations</i>
108	八仙纹玉如意	<i>Ruyi Scepter with Eight Immortals</i>
109	福寿八宝纹玉如意	<i>Ruyi Scepter with Bats and Eight Treasures</i>
110	松鹿石榴纹玉如意	<i>Ruyi Scepter with Pines, Deers and Pomegranates</i>
111	玛瑙灵芝形如意	<i>Ganoderma-shaped Ruyi Scepter</i>
112	红木柄花卉纹三镶玉如意 (9件)	<i>Red Wood Ruyi Scepter with Inlaid Three Jade Plaques with Flowers (9 Pieces)</i>
113	红木柄三镶玉如意	<i>Red Wood Ruyi Scepter with Inlaid Three Jade Plaques</i>
114	紫檀柄松鹿纹三镶玉如意	<i>Narra Ruyi Scepter with Inlaid Three Jade Plaques with Pines and Deer</i>
115	檀木柄八宝纹三镶玉如意	<i>Narra Ruyi Scepter with Inlaid Three Jade Plaques with Eight Treasures</i>
116	红木柄三镶玉如意	<i>Red Wood Ruyi Scepter with Inlaid Three Jade Plaques</i>
117	木柄云蝠纹三镶玉如意	<i>Wood Ruyi Scepter with Inlaid Three Jade Plaques with Bats and Clouds</i>
118	红木柄鹌鹑纹三镶玉如意	<i>Red Wood Ruyi Scepter with Inlaid Three Jade Plaques with Quails</i>
119	红木柄福寿纹三镶玉如意	<i>Red Wood Ruyi Scepter with Inlaid Three Jade Plaques with a Character and Bats</i>
120	檀木柄三镶龙纹玉如意	<i>Narra Ruyi Scepter with Inlaid Three Jade Plaques with Dragons</i>
121	龙穿花纹玉如意瓦 (3件)	<i>Plaque of Ruyi Scepter with Dragons and Flowers (3 Pieces)</i>
122	蝙蝠鲤鱼纹玉如意瓦	<i>Plaque of Ruyi Scepter with Bats and Carps</i>
123	麦穗鹌鹑纹玉如意瓦	<i>Plaque of Ruyi Scepter with Wheat Heads and Quails</i>
124	镶宝石福寿图玉如意瓦	<i>Plaque of Ruyi Scepter with Bats and Inlaid Gems</i>
125	玉佛手摆件	<i>Buddha's Hand Citron</i>
126	玉佛手	<i>Buddha's Hand Citron</i>
127	玉佛手	<i>Buddha's Hand Citron</i>
128	春江行船玉摆件	<i>Carving of a Travelling Boat</i>
129	春江泊船玉摆件	<i>Carving of a Boat with Figures</i>
130	玉渔船	<i>Fishing Boat</i>
131	童鹤纹觚形玉花插	<i>Gu-shaped Vase with a Boy and a Crane</i>
132	佛手形玉花插	<i>Vase in the Shape of a Buddha's Hand Citron</i>
133	佛手形玉花插	<i>Vase in the Shape of a Buddha's Hand Citron</i>
134	佛手形玉花插	<i>Vase in the Shape of a Buddha's Hand Citron</i>

- |                 |  |
|-----------------|--|
| 135 佛手形玉花插      | Vase in the Shape of a Buddha's Hand Citron                      |
| 136 佛手形玉花插      | Buddha Finger-shaped Flower Vase                                 |
| 137 佛手形玉花插      | Vase in the Shape of a Buddha's Hand Citron                      |
| 138 玉兰花形玉花插     | Vase in the Shape of a Magnolia                                  |
| 139 玉兰花形玉花插     | Vase in the Shape of a Magnolia                                  |
| 140 玉兰花形玉花插     | Vase in the Shape of a Magnolia                                  |
| 141 玉兰花形玉花插     | Vase in the Shape of a Magnolia                                  |
| 142 玉兰花形玉花插     | Vase in the Shape of a Magnolia                                  |
| 143 凤竹形玉花插      | Vase in the Shape of a Bamboo                                    |
| 144 鱼龙形玉花插      | Vase in the Shape of Fish-dragons                                |
| 145 鱼龙形玉花插      | Vase in the Shape of a Fish-dragon                               |
| 146 荷花形玉花插      | Vase in the Shape of a Lotus Flower                              |
| 147 莲荷形玉花插      | Vase with a Lotus Leaf, a Bud and Roots                          |
| 148 荷叶形玉花插      | Vase in the Shape of a Lotus Leaf                                |
| 149 荷叶形玉花插      | Vase in the Shape of a Lotus Leaf                                |
| 150 松鹿纹玉花插      | Vases in the Shapes of Double Pine Trunks                        |
| 151 梅竹纹玉花插      | Vase with Plum Blossoms and Bamboos                              |
| 152 岁寒三友玉花插     | Vase with Pines, Bamboos and Plum Blossoms                       |
| 153 螭虎纹水晶花插     | Vase with Felines  |
| 154 松竹梅纹玛瑙花插    | Vase with Pines, Bamboos and Plum Blossoms                       |
| 155 花鸟纹玛瑙花插     | Vase with Birds and Flowers                                      |
| 156 牡丹双雀纹寿山石花插  | Vase with Double Birds and Peonies                               |
| 157 兽面纹玉炉       | Censer with Animal Masks   |
| 158 龙凤纹玉熏炉      | Censer with Dragons and Phoenixes                                |
| 159 双兽耳活环玉炉     | Censer with Double Beast-shaped Handles and Rings                |
| 160 兽面纹玉炉       | Censer with Animal Masks   |
| 161 夔龙纹玉炉       | Censer with Dragons  |
| 162 饕餮纹玉炉       | Censer with <i>Taotie</i> Animal Masks                           |
| 163 兽面纹玉炉       | Censer with Animal Masks   |
| 164 兽面纹玉炉       | Censer with Animal Masks   |
| 165 兽面纹玉炉       | Censer with Animal Masks   |
| 166 兽面纹玉炉       | Censer with Animal Masks   |
| 167 四柱形玉炉、瓶、盒三式 | Censer in the Shape of Four Tubes, a Vase and a Box              |
| 168 水晶兽纽炉       | Censer with an Animal Knob                                       |
| 169 水晶双耳炉       | Censer with Double Handles                                       |
| 170 翡翠龙纹亭式炉     | Pavilion-shaped Censer with Dragons                              |
| 171 龙纹四出玉炉      | Censer with Dragons  |
| 172 鼎式玉熏炉       | <i>Ding</i> Tripod-shaped Censer                                 |
| 173 饕餮纹鼎式玉炉     | <i>Ding</i> Tripod-shaped Censer with <i>Taotie</i> Animal Masks |
| 174 环带纹玉炉       | Censer with Waves  |
| 175 出戟方鼎式玉炉     | Censer with Notches  |
| 176 兽面纹玉炉       | Censer with Animal Masks   |
| 177 兽耳双环玉炉      | Censer with Animal Handles and Rings                             |
| 178 龙首双耳玉炉      | Censer with Double Dragon Handles                                |
| 179 角端形玉香熏      | Censer in the Shape of an Imaginary Beast                        |
| 180 蕃莲纹玉熏炉      | Censer with Lotuses  |
| 181 蕃莲纹玉熏炉      | Censer with Lotuses  |
| 182 兽面纹玉熏炉      | Censer with Animal Masks   |
| 183 牡丹纹玉香熏      | Censer with Peonies  |

- |                    |   |
|--------------------|---|
| 184 牡丹纹玉香熏         | Censer with Peonies                               |
| 185 花口玉炉           | Lobed Censer with Flowers                         |
| 186 牡丹纹玉香熏         | Censer with Peonies                               |
| 187 兽面纹高足玉香熏       | Stem Bowl with Animal Masks                       |
| 189 亭式玉香筒 (1对)     | Pair of Pavilion-shaped Incense Burners           |
| 189 玉杯             | Cup   |
| 190 双耳玉杯           | Cup with Double Handles                           |
| 191 玉耳杯            | Wine Cup with Double Handles                      |
| 192 茄形玉杯           | Eggplant-shaped Cup                               |
| 193 瓜形玉杯           | Lobed Cup   |
| 194 犀角形螭虎纹玉杯       | Rhyton-shaped Cup with Felines                    |
| 195 玉爵形杯、玉盏托       | <i>Jue</i> Wine and Saucer                        |
| 196 鹿耳玉杯、玉托盘       | Cup with Double Deer Handles and Saucer           |
| 197 玉盏、玉盏托         | Cup and Saucer                                    |
| 198 菱花形玉盏托、玉杯 (1对) | Pair of Lobed Saucers and Cups                    |
| 199 桃枝纹玉盏托         | Saucer with Branches of Peaches                   |
| 200 菱花形玉盏托         | Lobed Saucer                                      |
| 201 菊花纹活环耳玉杯       | Cup with Double Handles, Rings and Chrysanthemums |
| 202 双兽耳玉杯          | Cup with Double Beast Handles                     |
| 203 山水纹玉杯          | Cup with Mountains Landscape                      |
| 204 梅花纹双耳玉杯        | Cup with Plum Blossom Handles                     |
| 205 花口形玉杯          | Lobed Cup   |
| 206 匚形玉杯           | <i>Yi</i> Ewer-shaped Cup                         |
| 207 双螭纹玉杯          | Cup with Double Felines                           |
| 208 螭纹匚形玉杯         | <i>Yi</i> Ewer-shaped Cup with Felines            |
| 209 匚形活环玉杯         | <i>Yi</i> Ewer-shaped Cup with a Ring             |
| 210 兽面纹匚形玉杯        | <i>Yi</i> Ewer-shaped Cup with Animal Masks       |
| 211 觚形玉杯           | <i>Gu</i> -shaped Cup                             |
| 212 铺首纹玉杯          | Cup with Animal Masks                             |
| 213 玉耳杯            | Cup with Double Handles                           |
| 214 花瓣形羊首玉杯        | Lobed Cup with a Ram Head                         |
| 215 鹰熊玉合卺杯         | Two Connected Cups with an Eagle and a Bear       |
| 216 花结纹玉合卺杯        | Two Connected Cups with Flowers                   |
| 217 青田石双螭耳杯        | Cup with Double Feline Handles                    |
| 218 玉钵             | Bowl  |
| 219 七佛纹玉钵          | Bowl with Seven Buddhas                           |
| 220 云龙纹玉瓮          | Jar with Dragons and Clouds                       |
| 221 玉碗             | Bowl  |
| 222 玉碗             | Bowl  |
| 223 玉碗             | Bowl  |
| 224 玉碗             | Bowl  |
| 225 龙纹玉碗           | Bowl with Dragons                                 |
| 226 坐佛纹玉碗          | Bowl with Seated Buddhas                          |
| 227 玉碗             | Bowl with the Mark of <i>Jiaqing</i> Reign        |
| 228 玉碗             | Bowl  |
| 229 花瓣纹玉碗          | Bowl with Flower Petals                           |
| 230 玉碗             | Bowl  |
| 231 牡丹纹玉碗 (1对)     | Pair of Bowls with Peonies                        |
| 232 寿字纹玉盖碗         | Bowl with Characters and a Lid                    |

- |     |            |  |
|-----|------------|--|
| 233 | 嵌金丝花卉纹玉碗   | Bowl with Flowers and Gold Inlay                                       |
| 234 | 描金嵌宝石玉碗    | Bowl with Inlaid Gems and Gold Tracery                                 |
| 235 | 蕃莲纹玉碗 (1对) | Pair of Bowls with Lotuses   |
| 236 | 嵌金丝玉盖碗     | Bowl with a Lid and Gold Inlay   |
| 237 | 玉盖碗        | Bowl with a Lid  |
| 238 | 菊花形玉碗      | Chrysanthemum-shaped Bowl  |
| 239 | 描金花瓣形玉碗    | Lobed Bowl with Gold Tracery   |
| 240 | 玉盘         | Dish   |
| 241 | 玉盘         | Dish   |
| 242 | 菊瓣纹玉盘      | Dish with Chrysanthemum Petals   |
| 243 | 菊瓣纹玉盘      | Plate with Chrysanthemum Petals  |
| 244 | 玉盘         | Dish   |
| 245 | 玉盘         | Dish   |
| 246 | 莲花纹玉盘      | Dish with Lotuses  |
| 247 | 描金银八宝纹玉攒盘  | Plate Set with Eight Treasures in Gold and Silver                      |
| 248 | 玉烟盘 (一套2件) | Set of Plates for Opium (2 Pieces)                                     |
| 249 | 阿拉伯文玉盘     | Dish with Arabian Inscriptions   |
| 250 | 琥珀秋叶形碟     | Leaf-shaped Plate  |
| 251 | 天鸡形玉尊      | <i>Tianji</i> Phoenix-shaped <i>Zun</i> Vessel                         |
| 252 | 兽面纹菱口玉尊    | <i>Zun</i> Vessel with Lobed Mouth and Animal Masks                    |
| 253 | 蕉叶纹四兽衔环玉尊  | <i>Zun</i> Vessel with Four Beasts Holding Rings and Descending Leaves |
| 254 | 天鸡形玉尊      | Phoenix-shaped <i>Zun</i> Vessel                                       |
| 255 | 飞黄形玉尊      | <i>Feihuang</i> Unicorn-shaped <i>Zun</i> Vessel                       |
| 256 | 双凤纹六环玉尊    | <i>Zun</i> Vessel with Six Rings and Double Phoenixes                  |





## 翡翠人物诗文插屏

清乾隆时期

高44.4、宽38.1、厚1.8厘米

现藏于北京颐和园

翡翠质地。插屏呈长方形，采用整块翡翠原料，以浮雕的手法琢刻而成。正面表现的是战国时期“甘罗拜相”的场面，并附有乾隆皇帝的御制诗一首；背面雕有玉堂富贵纹饰。翠料色泽浓绿柔和，花纹雕饰层次丰富，布局协调，为翠雕工艺的上乘佳品。颐和园20世纪50年代入藏。

(撰文：刘重广 摄影：杨京京)

## Table Screen with Figures and a Poem

Qianlong Period, Qing Dynasty

Jade

Height 44.4 cm

Beijing Summer Palace

## 平金川碑文玉插屏

清乾隆时期

通高34.5、宽11厘米，玉屏心高21、宽8厘米

现藏于辽宁省博物馆

碧玉质。玉屏心两面镌刻楷书填金文字，一面刻“庭过部伍于衽席……己巳二月之望日金”，另一面刻“川平定捷音至京……商可否”。此段文字为乾隆十四年（1749年）《御制平定金川告成太学碑文》之一部分。按照上海古籍出版社出版《清高宗御制文初集》卷十七的排版，碑文共计58列，而玉插屏每面的文字约占书中的6.5列，据此推算，此式玉插屏若刻全部碑文需9单面，若碑文题目独占一面，则正好是5块玉屏心。按此块玉屏心所刻文字在碑文中的位置，它应该是其中的第三块。下配有雕花木座。

（撰文：周晓晶 摄影：林利）

## Table Screen with Inscriptions

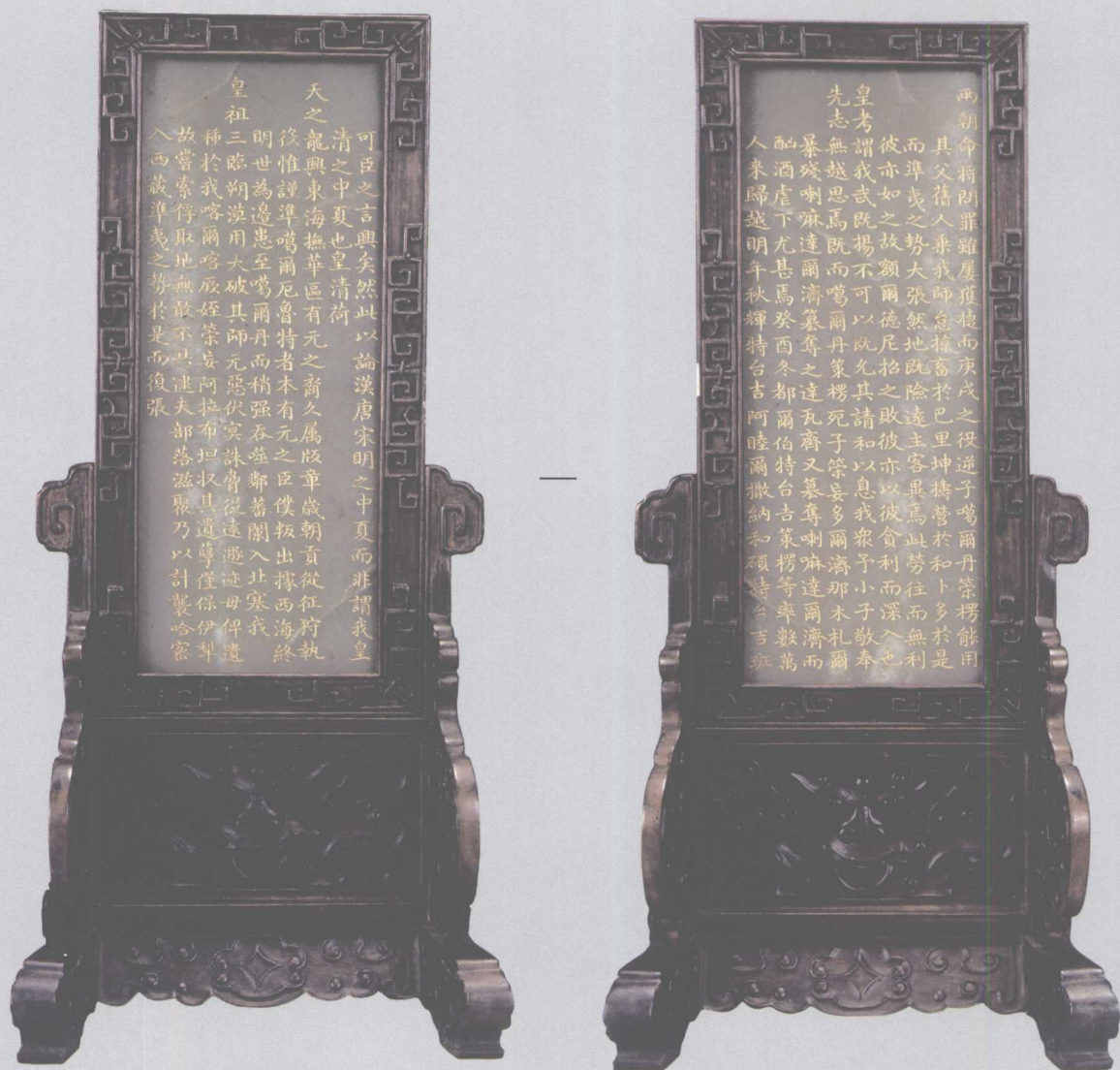
Qianlong Period, Qing Dynasty

Jade and wood

Total height 34.5 cm

Liaoning Provincial Museum





### 平准噶尔碑文玉插屏

清乾隆时期

通高34.5、宽11厘米，玉屏心高21、宽8厘米

现藏于辽宁省博物馆

玉质青色。玉屏心两面镌刻填金文字，一面刻“可臣之言兴矣……准夷之势于是而复张”，另一面紧接前文，刻“两朝命将问罪……辉特台吉阿睦尔撒纳、和硕台吉班”。此段文字为乾隆二十年（1755年）御制《平定准噶尔告成太学碑文》之一部分。按照《清高宗御制文初集》卷十九的排版，碑文共计89列，而玉插屏每面的文字约占书中的10列，据此推算，此式玉插屏若刻全部碑文需9单面，若碑文题目占据一面，正好是5块插屏心。按文字在碑文中的位置，估计此件玉插屏是其中的第二块。下配雕花木座。

（撰文：周晓晶 摄影：林利）

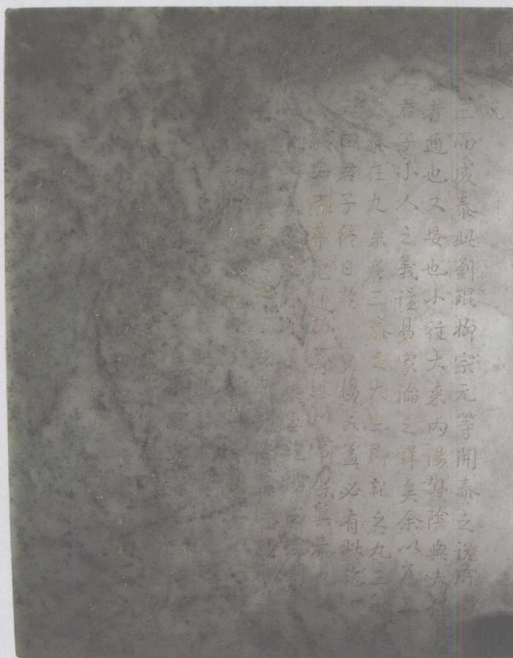
### Table Screen with Inscriptions

Qianlong Period, Qing Dynasty

Jade and Wood

Total Height 34.5 cm

Liaoning Provincial Museum



### 三阳开泰玉插屏心

清乾隆时期

高26.25、宽19.55、厚1.75厘米

现藏于辽宁省博物馆

碧玉质。正面浅浮雕三只羊在太阳照耀下的草地上漫步的情景，背面阴刻乾隆御制文《开泰说》，描金行书。按易经，阴历的十月为坤卦，纯阴之象；十一月为复卦，一阳生于下；十二月为临卦，二阳生于下；正月为泰卦，三阳生于下。因此，“三阳开泰”即指一年中正月之时，冬去春来，阴消阳长。因“羊”与“阳”同音，古字“羊”字又与“祥”相通，所以往往以三只羊的图案象征“三阳开泰”，意寓吉祥亨通，作为岁首称颂之语。

（撰文：周晓晶 摄影：林利）

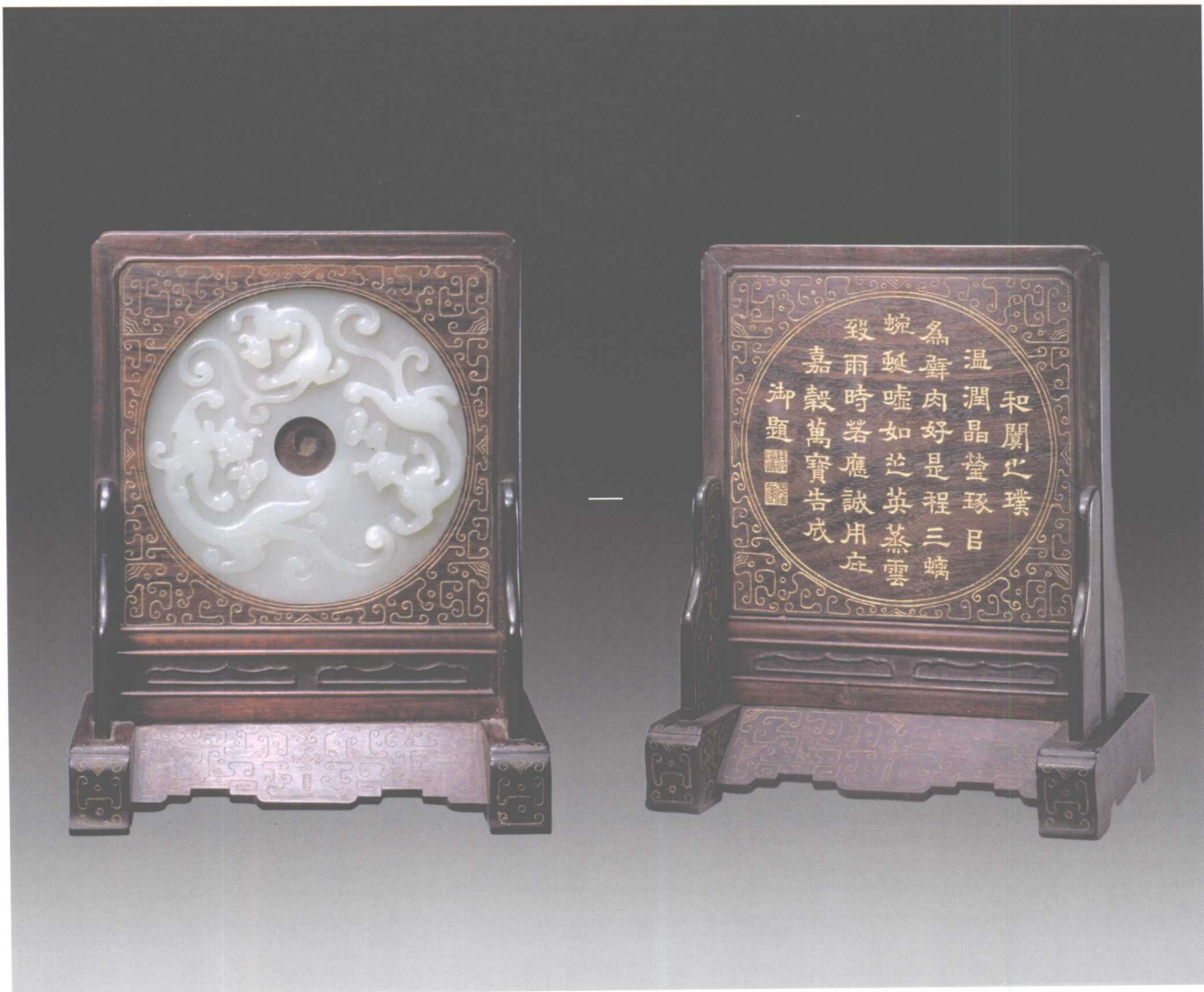
### Screen with Three Rams Design

Qianlong Period, Qing Dynasty

Jade

Height 26.25 cm

Liaoning Provincial Museum



## 螭纹璧形玉插屏

清乾隆时期

通高21.7、通宽17、璧直径12厘米

现藏于故宫博物院

红木为座。正面中间镶嵌白玉三螭纹璧。壁上高浮雕三条螭龙盘旋嬉戏，两只较大者口衔灵芝，小者回首相望，均为分叉花卷尾。有仿古风韵。木座雕变形夔龙纹，勾金线。背圆形开光，内刻乾隆御题文：“和田之璞，温润晶莹。琢以为辟，肉好是程。三螭蜿蜒，嘘如芷英。蒸云致雨，时名应诚。用庇嘉谷，万宝告成。”后题款“御题”，铃两方朱文方章：“几暇怡情”、“得佳趣”。此两方章均为乾隆之闲章。

(撰文：徐琳 摄影：赵山)

## Table Screen with an Inlaid Disk Decorated with Felines

Qianlong Period, Qing Dynasty

Jade and Wood

Total Height 21.7 cm

The Palace Museum



## 璧形玉插屏

清乾隆时期

通高41.8、通宽26.7、底宽13、璧直径19.8厘米

现藏于北京颐和园

璧为青玉质地，有黄色沁斑。璧体平圆，外圈阴刻兽面双蛇身卷曲纹饰，内圈雕琢排列整齐的蒲纹装饰，内、外圈有两圈圆形阴刻线相隔，璧面抛光较好。插屏框为紫檀制作，雕有海水龙纹等纹饰，正面中心位置雕刻坤卦符号，插屏背面雕刻隶书御制诗《题周玉璧》：“围好琢嘉谷芝纹外绕之制，虽非子执器，则实周遗古气，如可挹土华，常自披寸阴珍，是竟兴嗣讜言垂。乾隆丁亥夏日御题。”颐和园旧藏。

（撰文：周尚云 摄影：杨京京）

## Table Screen with an Inlaid Disk and a Poem

Disk: Han Dynasty

Table Screen: Qianlong Period, Qing Dynasty

Jade and Wood

Total Height 41.8 cm

Beijing Summer Palace



## 璧形玉插屏

清乾隆时期

通高41.8、通宽26.7、底宽13、璧直径19.8厘米

现藏于北京颐和园

璧为青玉质地，有黄色沁斑。璧体平圆，外圈阴刻兽面双蛇身卷曲纹饰，内圈雕琢排列整齐的蒲纹装饰，内、外圈有两圈圆形阴刻线相隔，璧面抛光较好。插屏框为紫檀制作，雕有海水龙纹等纹饰，正面中心位置雕刻乾卦符号，插屏背面雕刻隶书御制诗《题汉玉谷璧》：“玉坚土性脆，此理实易见，玉入土多年，土蚀玉如烂谷，璧实周制谁则强名汉，刚斧泯玉文，望若土一片，惟土能生谷，妙趣供绎玩。乾隆丁亥季夏御题。”颐和园旧藏。

（撰文：周尚云 摄影：杨京京）

## Table Screen with an Inlaid Disk and a Poem

Disk: Han Dynasty

Table Screen: Qianlong Period, Qing Dynasty

Jade and Wood

Total Height 41.8 cm

Beijing Summer Palace

## 福禄寿纹玉插屏

清乾隆时期

通高24.8、通宽21.7、底宽12.9厘米

玉屏长14.8、宽10.9厘米

现藏于故宫博物院

在紫檀木座上镶嵌椭圆形青白玉插屏心，插屏围绕中轴可转动。一面浮雕福、禄、寿三星，三人均注视着—个孩童，似乎把祝福都寄托于他。旁有松树、山石、兰草。另一面刻御制福禄寿三星赞，后落款“臣周煌敬书”，并有朱文方章“臣”及白文方章“周煌”，字均泥金。三星赞御制文词句是从《诗经》、《易经》、《尚书》中节选而来，在宫中多种器物上均有篆刻。此器玉质温润，刻工精细，紫檀座边也饰夔龙回纹，中间亦饰有兰花、灵芝、山石，可谓工精质美。

(撰文：徐琳 摄影：赵山)



## Table Screen with Gods of Happiness, Wealth and Longevity

Qianlong Period, Qing Dynasty

Jade and Wood

Total Height 24.8 cm

The Palace Museum







### 嵌玉饰木镜架

清乾隆时期

通高24.2、宽23.2厘米

现藏于台北故宫博物院

木框座架内嵌一透雕的群兽形玉饰，玉饰为碧玉质。纹样以山峦为基底，云气自山头向外散逸，珍禽异兽穿梭其间。木座的正面刻“乾隆年制”，座的背面刻乾隆皇帝壬午年御制诗一首，诗录于《清高宗御制诗文全集》御制诗三集册五卷十七页十。

(图片与文字说明由得意典藏提供)

### Wood Mirror Stand with Inlaid Ornament in the Shape of Beasts

Qianlong Period, Qing Dynasty

Jade and Wood

Total Height 24.2 cm

Taipei National Palace Museum