

北京古典图文化传播有限公司 编著

COLLECTION OF THE
DETAILS IN HOTEL SPACE

GUEST

酒店空间细部集成 客房

STANDARD ROOM
标准客房

PRESIDENTIAL SUITE
总统套房

豪华套房
DELUXE SUITE

图书在版编目(CIP)数据

酒店空间细部集成. 客房: 汉英对照/北京吉典博
图文化传播有限公司编著. —福州: 福建科学技术出版
社, 2010. 3

ISBN 978-7-5335-3543-8

I. ①酒… II. ①北… III. ①饭店-空间设计: 细部
设计-图集 IV. ①TU247. 4-64

中国版本图书馆CIP数据核字(2010)第024483号

主 编: 李壮

副 主 编: 李秀 夏秀田 刘云 单连杰

编 委: 位郁斌 刘 云 韦成刚 许 昊 李元培 徐翔洲 杨 莹 谷艳凤 高 红
夏春雪 王 岩 蒋 曼 陈佳红 王 超 王 博 吕冬晶 娄 耸 李玲玲
周 爽 周 妍 陈明阳 黄 择 周 博 陆倩倩 陆 茁 王小燕 王亚楠
周 菲 于洪波 宋占生 韩 静 孙洪艳 徐迎春 张婷婷 李凤娇 佟晶晶
李 鑫 路 平 邓 娇 纪永飞 王 健 何 鹏 杨 旭 盖世宇 孙慧婧
周 怡 吴琳琳 马 进 王雪娇 朱兴华 宁成龙 隋立欣 卓 著 潘丽娜
胡 爽 张 建 王 迪 高 彬 徐 曼 张 雪 陈 莹 苏秀颖 王 秀
王 丽 杨 晨 李 娜 都宽平 李 莹 杨 翠 李 岩 肖 齐 张子博
李红韵 景 泉 凌 宇 李 闯 刘 丹 王 雪 王小哲 吴玖慧 黄欣姝
任芳芳

组 稿: 张吉

文字说明: 夏秀田

翻 译: 国歌

设计制作: 杜鑫 孔瑞洁

设计总监: 陈利



书 名 酒店空间细部集成 客房

编 著 北京吉典博图文化传播有限公司

出版发行 福建科学技术出版社(福州市东水路76号, 邮编350001)

网 址 www.fjstp.com

经 销 各地新华书店

印 刷 恒美印务(广州)有限公司

开 本 889毫米×1194毫米 1/12

印 张 27

图 文 324码

版 次 2010年3月第1版

印 次 2010年3月第1次印刷

书 号 ISBN 978-7-5335-3543-8

定 价 298.00 元

书中如有印装质量问题, 可直接向本社调换

COLLECTION OF THE DETAILS
IN HOTEL SPACE

GUEST

酒店空间细部集成 客房
北京吉典博图文化传播有限公司 编著

BOUTIQUE HOTEL

LOBBY AREA

1

2

3

4

5

6

7

8

9

10

11

12

13

14

15

16

17

18

19

20

21

22

23

24

25

26

27

28

29

30

31

32

33

34

35

36

37

38

39

40

41

42

43

44

45

46

47

48

49

50

51

52

53

54

55

56

57

58

59

60

61

62

63

64

65

66

67

68

69

70

71

72

73

74

75

76

77

78

79

80

81

82

83

84

85

86

87

88

89

90

91

92

93

94

95

96

97

98

99

100

101

102

103

104

105

106

107

108

109

110

111

112

113

114

115

116

117

118

119

120

121

122

123

124

125

126

127

128

129

130

131

132

133

134

135

136

137

138

139

140

141

142

143

144

145

146

147

148

149

150

151

152

153

154

155

156

157

158

159

160

161

162

163

164

165

166

167

168

169

170

171

172

173

174

175

176

177

178

179

180

181

182

183

184

185

186

187

188

189

190

191

192

193

194

195

196

197

198

199

200

201

202

203

204

205

206

207

208

209

210

211

212

213

214

215

216

217

218

219

220

221

222

223

224

225

226

227

228

229

230

231

232

233

234

235

236

237

238

239

240

241

242

243

244

245

246

247

248

249

250

251

252

253

254

255

256

257

258

259

260

261

262

263

264

265

266

267

268

269

270

271

272

273

274

275

276

277

278

279

280

281

282

283

284

285

286

287

288

289

290

291

292

293

294

295

296

297

298

299

300

301

302

303

304

305

306

307

308

309

310

311

312

313

314

315

316

317

318

319

320

321

322

323

324



SOFITEL WANDA BEIJING	158
SHANGRI-LA_ SHANGHAI	164
168	JW MARRIOTT HOTEL SHANGHAI
172	HYATT ON THE BUND SHANGHAI
178	SHANGHAI MARRIOTT HOTEL HONGQIAO
184	JIN JIANG HOTEL
188	ZHONGBANG HOTEL
190	196 JIA SHANGHAI
206	210 FUCHUN RESORT
220	224 YALONG BAY MANGROVETREE RESORT SANYA
228	232 TOP BOUTIQUE HOTEL
234	MILLENNIUM HONGQIAO HOTEL SHANGHAI
236	PULLMAN SHANGHAI SKYWAY HOTEL
238	242 THE MANSION HOTEL
250	256 HOTEL G BEIJING
262	268 B' LAVII HOUSE

3

PRESIDENTIAL SUITE 总统套房

YALONG BAY MANGROVETREE RESORT SANYA
三亚亚龙湾红树林度假酒店

274

280

THE PENINSULA BEIJING
王府饭店

288

PUDONG SHANGRI-LA_ SHANGHAI
上海浦东香格里拉酒店

PORTMANRITZ-CARLTON,SHANGHAI
上海波特曼丽嘉酒店

294

THE ST REGIS SHANGHAI
上海瑞吉红塔大酒店

JW MARRIOTT HOTEL SHANGHAI
上海明天广场J.W.万豪酒店

306

310 SHANGHAI MARRIOTT HOTEL HONGQIAO
上海万豪虹桥酒店

MILLENNIUM HONGQIAO HOTEL SHANGHAI
上海千禧海鸥酒店

318

目录

STANDARD ROOM

标准客房

酒店标准客房是所有酒店设计定位的主体，其设计风格和功能定位决定了未来酒店的入住率，是酒店经营好坏的主要决定因素之一。标准客房的设计风格直接体现了酒店的文化定位及经营服务的理念，它的设计标准也决定了整个酒店的档次。如何通过标准客房设计突出酒店自身的个性，使其独树一帜，是每个酒店设计追求的目标。随着中国市场的成熟，越来越多的国际酒店管理集团的进驻，酒店客房的设计已经与国际化标准接轨，酒店标准客房的设计过程已经变成了一个综合各专业的综合设计，单纯从设计角度考虑设计已经不能满足现在的要求，如何借鉴成功的案例，如何研究成功的案例，成为设计师必须面对的问题。

Standard guest room is the subject of the design orientation of all hotels, and its design style and function orientation decide the future occupancy rate of a hotel. It is one of the main decisive factors that affect the operation condition of a hotel. The design style of the standard guest room can reflect the cultural orientation and the operation and service concept of a hotel directly, and the design standard of the standard guest room also decides the grade of the whole hotel. How to express and highlight the individuality of a hotel and develop a style of its own through design is the goal that every hotel designer pursues. As Chinese market becomes more and more mature and more and more international hotel management groups enter into the market, the design of guest room of hotel has linked with internationalized standards, and the interior design process of the standard guest room has become a comprehensive design integrating varied disciplines. The design considered merely from the angle of design has been not able to satisfy the present requirements. How to borrow ideas from successful cases, and how to study into the successful cases are the problems the hotel interior designers must be faced with.

TOP BOUTIQUE HOTEL
淘璞精品酒店

SWISSOTEL GRAND SHANGHAI
上海宏安瑞士酒店
PENTHOUSE

MILLENNIUM HONGQIAO HOTEL SHANGHAI
上海千禧海鸥酒店

SHERATON ALOFT
喜来登 雅乐轩

LAPIS CASA BOUTIQUE HOTEL

RADISSON HOTEL PUDONG CENTURY PARK SHANGHAI

THE H HOTEL SHANGHAI
上海鸿酒店

HI HOTEL

THE OPPOSITE HOUSE

太古瑜舍

COLLECTION OF THE DETAILS
IN HOTEL SPACE

PULLMAN SHANGHAI SKYWAY HOTEL

上海斯格威铂尔曼大酒店

上海浦东香格里拉酒店

PUDONG SHANGRI-LA_ SHANGHAI

HYATT THE BUND SHANGHAI

上海外滩茂悦酒店

URBN HOTELS SHANGHAI

上海雅悦酒店

YALONG BAY MANGROVETREE RESORT SANYA

三亚亚龙湾红树林度假酒店

PIERONE BOUTIQUE HOTEL

一号码头精品酒店

RENAISSANCE SHANGHAI YUYUAN HOTEL

THE EMPEROR
上海豫园万丽酒店
皇家驿站

HOTEL G BEIJING

北京极栈酒店

RENDEZVOUS MERRY HOTEL SHANGHAI

上海美丽园龙都大酒店

FORTUNE LAND INTERNATIONAL HOTEL BEIJING

北京富邦国际酒店

SOFITEL BOAO HOTEL

博鳌索菲特大酒店

ZHONGBANG HOTEL

中邦酒店

THE WESTIN BUND CENTER SHANGHAI

上海外滩中心威斯汀

酒店空间细部集成 客房

A-LIVE DESIGN HOTEL SHANGHAI

上海丽府酒店

标准客房

STANDARD ROOM

苏州亚致精品酒店

HOTEL ONE SUZHOU

JIN JIANG HOTEL

锦江饭店

JIA SHANGHAI

PUDI BOUTIQUE HOTEL

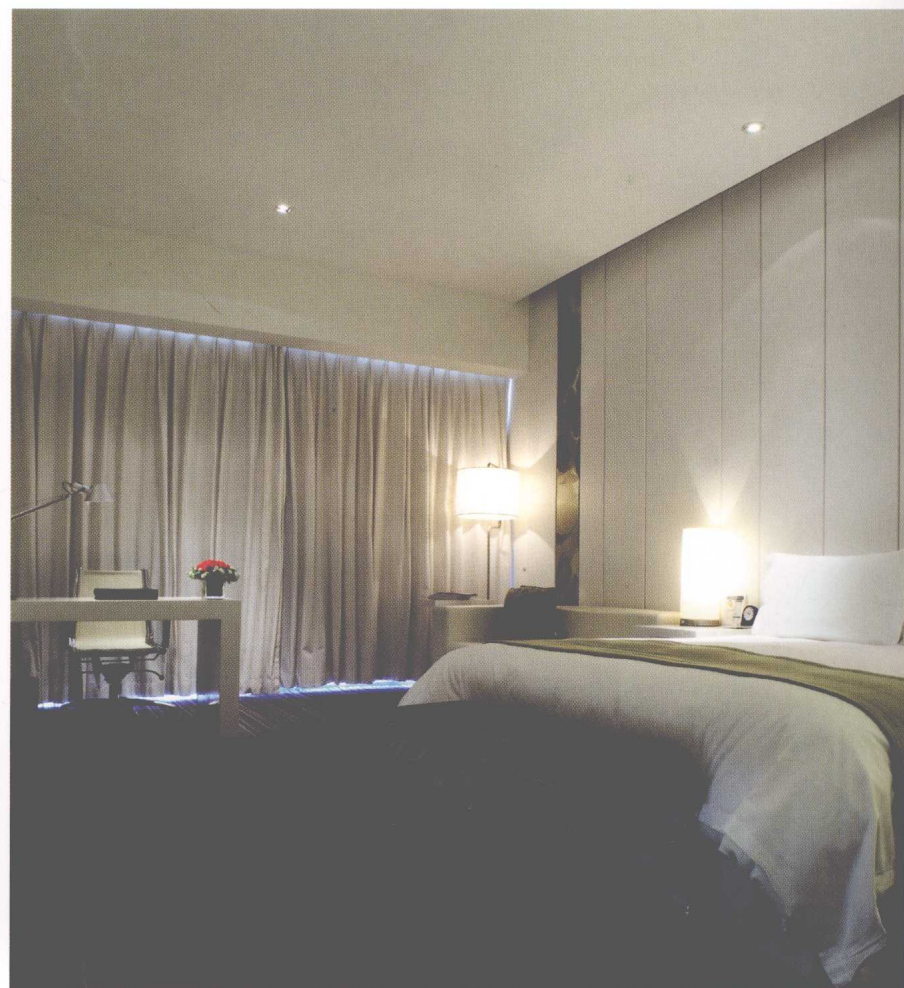
璞邸精品酒店

SOFITEL WANDA BEIJING

北京万达索菲特酒店

FUCHUN RESORT

富春山居



作为酒店标准客房，极简风格是设计主调。这里的设计手法与酒店的整体风格相呼应，从大堂公共空间进入到客房层，走廊细部手法富于变化而又统一，单一的色调中变化的造型贯穿整个建筑空间。客房设计风格与功能布局也突出了这种极简的设计手法。入口的门厅、睡眠区及工作区通过固定家具得以合理划分，省却了繁杂的装饰。在功能设置上采用了液晶电视等先进的电器设备，节省了室内空

As the standard guest room of the hotel, simple style is the keynote of its design. The design methods of the guest room match well with the overall style of the hotel. The design techniques of the corridor from the public hall to the floor where guest room is located are varied yet harmonious. The varied shapes in monotonous hue run through the whole architectural space. The interior design style and the functional layout of the guest room also highlight the simple design method. The entrance hall, the sleeping area and the working area are separated properly by the furniture, which are released from the miscellaneous adornments. In respect of functional arrangement, the guest room is equipped with liquid crystal television etc. advanced electrical

间，迷你吧和书写台被简洁的造型家具连接成一个整体，在白色的背景墙面上形成了雕塑般的效果，建筑感极强；卫生间采用通透的玻璃隔断，体现了目前五星级酒店的发展趋势，同样的白色调卫生间给人以整洁干净的气氛。

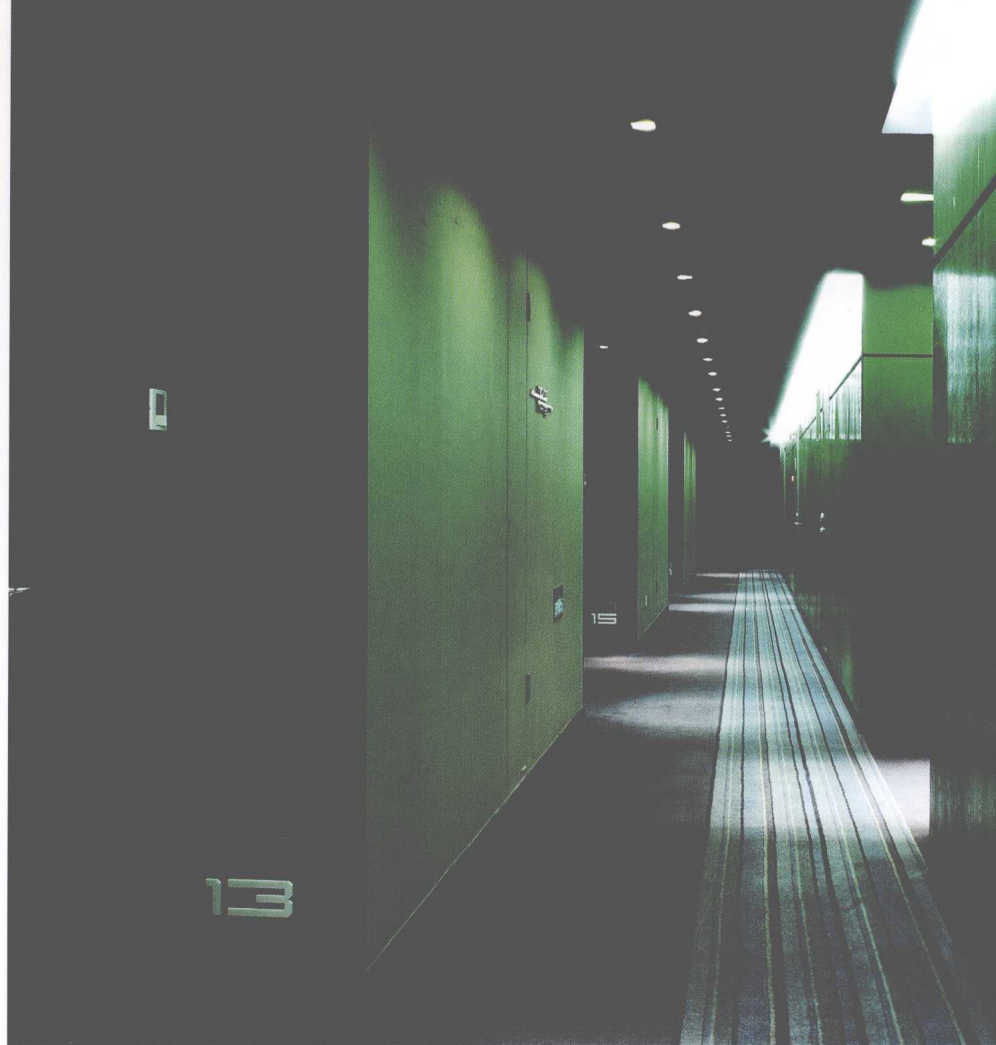
入口门厅的天花吊顶既解决了检修口细部收口的问题，同时在设计风格上与地毯的线条相呼应。

equipment, to save the interior space; mini bar and writing counter are connected into a whole by the furniture with simple shapes, and achieve the sculpture like effect on the white background wall with strong sense of architecture; the penetrating glass partition is applied to the toilet, which reflects the trends of the current five-star hotels. Likewise, the toilet with white hue produces neat and clean atmosphere.

The ceiling of the entrance hall not only solves the finish problem of the details of the access door, but also echoes the lines on the carpet in design style.







室内空间装饰语言停留在简洁的灰白之间，装饰照明和造型间的有机结合也仅仅停留在功能的范围内。室内色彩划分成两块：地面的灰色和天花与地面为一体的白色。为了避免单调的色彩形成的冰冷感，地毯采用条形的纹理，与白色的体块形成了明快的对比。

客房设计风格充分体现简约设计手法，疏密有致的线条在大块的灯光照射下对比明显。门厅入口的镜面推拉门扩大了空间的视野，反射的室内景观更加增强了空间的对比效果。

走道空间的地毯产生的心理暗示使得客人在进入客房后有一种归属感；明亮的客房卫生间为客人营造宾至如归的感受。

The decoration languages of the interior space stay between the simple gray and white, and the organic combination of the decorative lighting and the shaping is just within the range of function. The interior colors are divided into two systems, i.e. the gray system of the ground and the white system of the ceiling and the ground as a whole. To avoid the cold feeling brought by the monotonous color, the stripe texture is applied to the carpet to contrast with the white block.

The interior design style fully mirrors the simple design technique. The strips with different distances between lines produce striking contrast under the massive light. The mirror sliding door at the entrance hall enlarges the visual field of the space, reflecting the interior landscape, which improves the contrast effect of the space.

The psychological hint generated by the carpet in walkway gives guests a sense of belonging after entering into the room. The bright toilet in the guest room makes guests feel at home.



太古瑜舍是一家典型的设计酒店，由日本著名设计师隈研吾设计；酒店的室内空间充满了典型的东方文化特色，突出了独特视角下现代东方文化的精髓。如酒店的名字一样，太古瑜舍的客房设计理念体现了主人对宾客的接待礼遇。干净的房间、宽敞明亮的环境、温暖的礼遇，都是酒店客房给客人提供的服务。

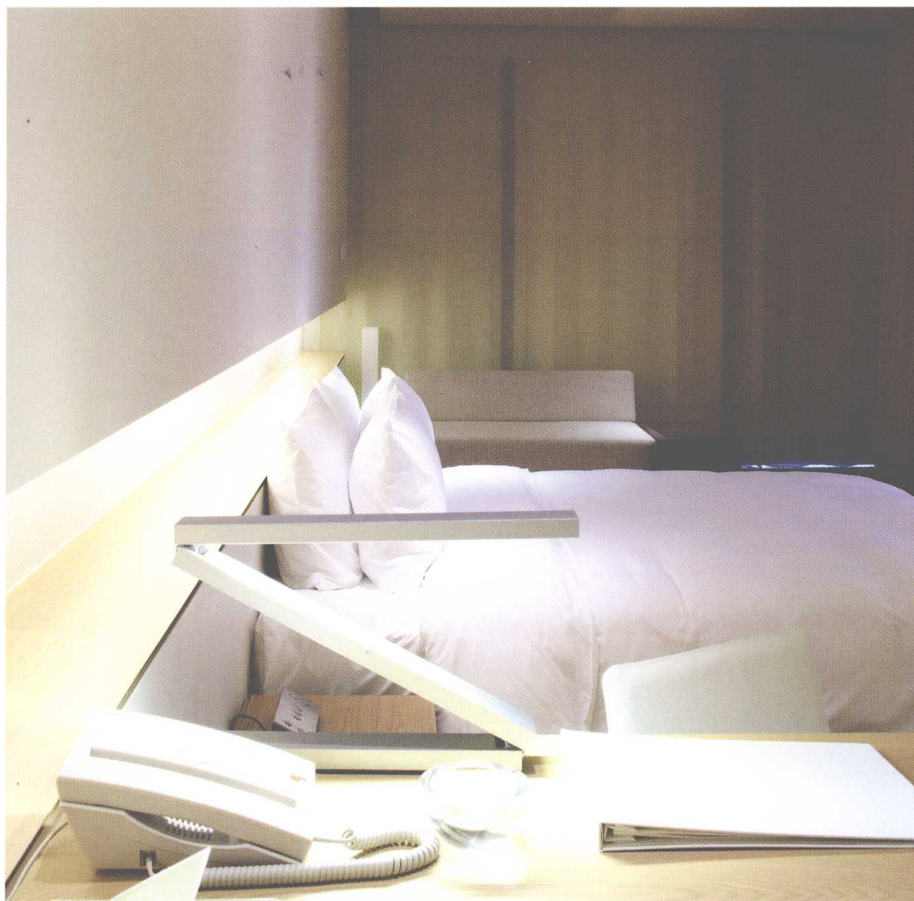
The Opposite House is a typical design hotel, designed by Japanese famous designer Kengo Kuma; the interior space of the hotel is pervaded by the typical features of the orient culture, highlighting the style with oriental modern cultural background under unique angle. Like the name of the hotel, the design concept of the guest room of the Opposite House reflects the host's courteous reception of guests. Clean room, spacious environment and warm reception are the service provided for the guests by the hotel.

客房的室内功能布局同样体现了极简的风格，功能设置比较简单，没有了五星级酒店中常有的迷你吧等家具设施，这些功能被集中在酒店的特色酒吧内，以便客人可以在一个公共环境内感受到异国风情；通过木质材料来烘托空间的温暖感，木质家具和白色家具穿插使用，使空间中的色彩达到雅致的均衡效果；衣橱上的线条与木纹的天然纹理相互呼应，形成了空间中的自然和人工的变化与统一。

In respect of colors, wood materials are employed to set off the warmth of the space, the alternate application of furniture and white furniture make the colors in the space achieve elegant balance effect. The lines on the wardrobe set off the natural grains of the wood, forming change and unity of natural and artificial elements in the space. Distances between lines produce striking contrast under the massive light. The mirror sliding door at the entrance hall enlarges the visual field of the space, reflecting the interior landscape, which improves the contrast effect of the space.







为了突出室内空间的开敞明亮，设计师运用大面积的镜面来反射室内环境，形成了令人振奋的视觉效果。这种设计手法突破了以往酒店客房设计惯用的设计方式，充分地床屏背景墙的造型作为镜子内的反射素材，从而形成空间中奇幻的效果；通过灯光装饰打破室内空间的宁静，在空间中形成张力。简洁的材料装饰与设计手法高度统一，木质材料增添了空间的自然特色。

To highlight the openness and brightness of the interior space, the designer adopts large area of mirrors to reflect the interior environment, achieving the exhilarating effect. Such kind of design method gets rid of the usual design ways in which the mirrors are applied in the guest room of the hotel, and fully takes the shapes of the background wall of the headboard as the reflected materials in the mirror, achieving magical and illusory effect in the space. Decorative lighting breaks the peace of the interior space and forms tensile force in the space. Simple decorative materials keep highly consistent with the design techniques. Wood materials add natural features to the space.

客房设计突出自然亲切的主题，主要通过材质的对比来实现，木头成为室内空间的主要装饰元素。推拉的活动门节省了室内空间，同时方便客人的使用。卫生间的木质浴缸和洗手盆给客人形成了强烈的亲切感，给整个酒店客房增添了一种别致的趣味，并成为客房设计亮点。因为来这里入住的客人大多是世界各地到北京旅游的外国游客，因此酒店客房内卫生间的设计格外突出宽敞、明亮的特点。

The design of guest room puts stress on natural and intimate theme, which is realized through the contrast of materials. Wood becomes the main decorative elements of the interior space. The sliding door not only saves the interior space, but also provides convenience for guests. The wood bathtub and hand basin in the toilet give guests strong sense of warmth and intimacy; moreover, they add a piece of distinctive interest to the guest room of the whole hotel and become the highlight in the guest room.



