

现代 办公空间

SAMSUNG

ELECTRONICS

图书在版编目(CIP)数据

现代办公空间/贝思出版有限公司编.—沈阳: 辽宁
科学技术出版社, 2001.6

ISBN 7-5381-3407-7

I. 现… II. 贝… III. 办公室—建筑设计—图集

IV. TU243-64

中国版本图书馆CIP数据核字(2001)第13419号

出 版 者: 辽宁科学技术出版社

(地址: 沈阳市和平区十一纬路25号 邮编: 110003)

印 刷 者: 广州培基印刷镭射分色有限公司

发 行 者: 各地新华书店

开 本: 635mm × 965mm 1/8

字 数: 200千字

印 张: 26

印 数: 1~4000册

出版时间: 2001年6月第1版

出印时间: 2001年6月第1次印刷

责任编辑: 符宁 郭健

封面设计: 金丹 王晶

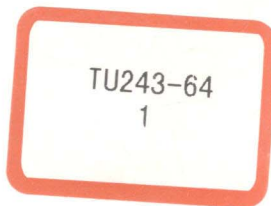
版式设计: 金丹 王晶

责任校对: 杨余庆

定 价: 180.00元

邮购咨询电话 024-23284502

TU243-64



现代 办公空间



CONTENTS

目录

FINANCIAL

金融

- 6 Back to Basic — Belgian Bank
返璞归真 — 华比银行
- 11 "Pretended" — Easyway International Holdings Ltd.
"伪装" — 顺成国际集团
- 15 The Office of Glass — Grand Generale Asset Management Ltd.
玻璃的办公室 — 广通资产管理有限公司
- 20 Give It a Change — Celestial Asia Securities Holdings Ltd.
来一点改变 — 时富投资集团有限公司
- 26 Banking on collaboration — Industrial & Commercial, Bank of China, Shanghai Headquarters
合作结晶 — 中国工商银行上海市分行
- 36 Banking on Style and Simplicity — Huamu Training Center Building of China Construction Bank
简洁·适度·高效 — 建设银行花木培训中心大楼
- 42 A Fine Balance and Style — Dao Heng Bank / Guoco Group
细致的平衡与风格 — 道亨银行及 国浩集团
- 56 Simply Innovation — Jardine Fleming Investment Centre
纯粹创新 — JF 投资中心
- 62 Re-imaging the Banking Service — Standard Chartered Bank
重塑银行形象 — 渣打银行

TECHNOLOGY 科技

- 70 The best of both worlds — Allied Signal Laminate System Pacific Ltd.
对比中的和谐 — Allied Signal Laminate System
- 74 The All-important reception — Samsung Electronics HK Co., Ltd.
万千宠爱在一身 — 三星电子香港有限公司
- 78 Dual Use for Colour — Nortel Networks; Beijing
双重功能的色彩 — 北方电讯
- 87 All Roads Lead to Rome — Quamnet
异曲同工 — Quamnet
- 92 All things considered — IBM SISC New Office
关切全面 — IBM SISC 部门新办公室
- 97 Vision Impossible — iAdvantage Internet Service Centre
虚实相杂 — 互联优势服务中心
- 104 Between traditions — Asia On Line (HK) Ltd. Head Office
传统之间 — Asia On Line (HK) Head Office
- 110 Shells in a sea of blue — Office of GlobalStar Entertainment & Technologies Co Ltd.
蓝色工作间 — Global Star Entertainment & Technologies 办公室
- 116 Cyber - iData Centre for "Powerbase".
网际空间 Powerbase 的数据资料中心

CREATIVE 创作

- 122 Pure Coincidence? — Communications Excellence Dentsu HK Branch
如有类同, 是否巧合?
- 126 Same yet Different — Saatchi & Saatchi / Zenith Media
和而不同 — 盛世长城国际广告
- 132 Upshot of Open-mindedness — Dentsu Young & Rubicam Brand Communications
开明之物 — 电通扬雅品牌传播
- 136 Corporate Multi-Culture — AC Nielsen
多元文化的集合 — AC Nielsen

- 146 Based on basics — EDGE Architects Office
以本为本 — EDGE Architects 办公室
- 150 Blend of Artistic Visions — R & C Communications
兼收并蓄 — 伟思广告有限公司
- 158 Youngish office for forward-thinking company — Alex Choi Design Ltd.
新生代工作坊 — 蔡明治设计有限公司办公室
- 164 Conjuring up an illusion of Japanese style — Tommy Li Design Workshop
溢发和风联想 — 李永铨设计厦
- 169 The less, the better, — PJR Design
少的是好 — 潘居然设计室
- 174 Simple sophistication — Saatchi & Saatchi Office
寓繁于简 — Saatchi & Saatchi 办公室

COMMERCIAL 商业

- 186 Underlying Japanese Spirit — Uchida Yoko (HK) Ltd.
深藏不露的日本情怀 — 内田洋行 (香港)有限公司
- 190 Tiny Little Things — Hogan Group Office
小东西 — Hogan Group Office
- 194 Plainness & Clarity — Office of Walker Shop Footwear Ltd.
朴实·明晰 — Walker Shop Footwear Ltd. 办公室
- 198 Pearl Salon — Showroom / Office of Tasaki Shinju
珍珠廊 — 田崎珍珠陈列室暨办公室
- 202 Black Lofty Manner — Michel of Hong Kong (Dongguan) Limited Office
黑色尊贵 — 美商洋行 (东莞) 办事处

INDEX

索引

- 206 Designer Index
设计师索引



金融

Back to Basic — Belgian Bank

返璞归真 — 华比银行

Client 客户：Belgian Bank 华比银行

Location 地点：21/F, 25/F & 27/F of Belgian Bank Tower, Gloucester Road, Wan Chai, H. K.

香港湾仔告士打道华比大厦 21、25 及 27 楼

Total Area 总面积：1,110 sq. m./ 平方米

Design 设计：Kim Design Co. (Kim Man) 建文设计公司 (文剑芳)



Recessed circular lighting fixture and patterned marble flooring in the reception lobby of the Belgian Bank head office. 圆形凹槽天花灯及云石拼花地板，构成了 27 楼接待大堂的设计特色。



Reception area of the Private Banking Department on 25/F. 25 楼“私人财务部门”的接待处。

Interior designers are routinely preoccupied with bringing improvements to the end user's living standards (both at the home and in office) when funds and space are scarce.

The design of the Belgian Bank Tower illustrates a typical response.

Pragmatic Designs

The project spanned the bank's head office inside Belgian Bank Tower and other branches.

The designer adopted a neat and straightforward approach in Belgian Bank Tower. A circular recessed lighting fixture and patterned marble flooring was the design essence of the lobby hall (27/F). The main problem in the lobby was the low ceiling height (only 2.25m) which was resolved by using a recessed lighting fixture which, apart from its obvious function, visually adds to the height of the space.

室内设计师的众多使命中，有一个经常遇到的课题：如何能善用有限的资源和空间，以改善使用者的生活（包括家居和工作）质量。华比大厦（21、25 及 27 楼）的设计，用于回答上述课题，是一个不错的示范。

务实的设计

整个设计方案包括了华比银行的总办事处及其他分行，简洁和直截了当是其设计特色。位于总办事处 27 楼的接待处大堂，以圆形的凹槽天花灯及相对应的拼花地板，来欢迎每一位访客。由于层高比较低矮（只有 2.25 米），凹槽天花灯的设计便发挥了两项功能，一是照明，二是开阔空间的视觉高度。

21 楼的培训室的设计，照顾了多方面的需要。首先，空间可以按照人数的多寡，有弹性地划分成一至三间面积大小不同的房间，相反，也可以拆掉所有间隔，变成一间可容纳 170 人的培训/会议室。





Lobby on 21/F.
21 楼大堂。



Reception lobby of the Belgian Bank head office.
27 楼接待大堂的设计特色。



Vertical linear patterned panels make the floor volume look higher.
垂直纹的装饰面板，令层高看起来比实际的高。

The partition design of the training room (21/F) fulfills various needs. It is divisible into three rooms of different sizes which can accommodate up to 170 people if all the partitioning is pushed aside.

Three A/V screens capable of playing simultaneous videos were installed in the training room and two other rooms. This enables staff training programmes to take place beyond the physical boundaries of particular rooms. Moreover, steel boards were hidden behind the padded panels in the training room. Not a single inch of space is wasted since staff can use magnetic holders to stick papers on the wall during their speech or reports.

Colour Codes

Three different types of wood were used for different areas. Light-coloured beech wood was used in the reception lobby to give a warm and welcoming feeling. Medium-coloured cherry wood was used in the conference and training rooms. And dark reddish mahogany was used in executive offices. Apart from being decorative, the different coloured wood serves as a tool to differentiate space.

在培训室及另外两间办公室内，各安装了一个可同步放映的电视屏幕，换言之，员工的培训或会议的进行毋须只局限于某一个房间内。而为了善用培训室空间，设计师在一面有衬垫的装饰面板后装上了铁板，方便员工在演说或汇报途中于墙上使用磁石贴。

深浅有度

对于木材的选色，设计师也有其原则。共选用了三种主要的木材，有用于各个接待区域的、颜色较浅的榉木；用于会议室和培训室的、中间色系的樱桃木；及用于高级行政人员办公室的、深啡红色的桃花心木。不同颜色及深浅度的木料，除了装饰点缀的媒介外，同时也用以区分各个不同功能的空间。

Flexible partition system and bowstring ceiling in the training room (21/F) capable of accommodating a maximum of 170 people.

21楼培训室的天花成弓形，间隔以灵活多变为主，最多可容纳170人。





Some branch designs undertaken by the designer: Belgian Bank at Yau Ma Tei (top); and Tsuen Wan Branch (below).
除了为总行进行设计外，设计师也负责其他分行的设计任务。上：油麻地分行、下：荃湾分行。



Unified Style for Branches

As to the design of branches, a new set of guidelines were laid down. For instance, the main colour scheme is composed of black, grey and red. To a certain extent, however, design uniqueness is allowed such as the wave-shaped loft in Tsuen Wan Branch.

Just because a pragmatic design approach is adopted doesn't mean aesthetic considerations have to be dispensed with as is evident in the bank's head office and branches.

分行设计统一化

至于分行的设计，则可概括成“异中见同”。“同”的，是每间分行的色彩设计皆十分接近，以黑、灰、红为主调，以配合公司的统一形象。而“异”的，则是每间分行均在一定程度上存在着个别的设计特色，如荃湾分行的波浪型阁楼造型即是一例。

以实用为大前提的设计，并不等同于要完全摒弃美观的考虑，诚如这间银行总办事处及其分行的设计。

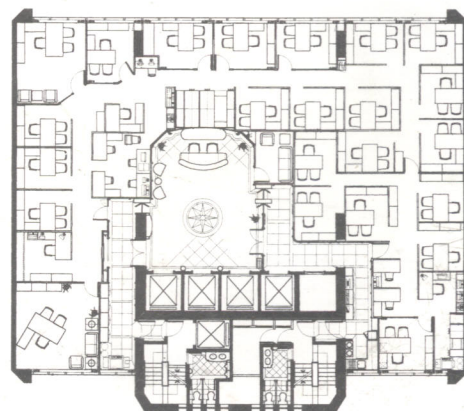
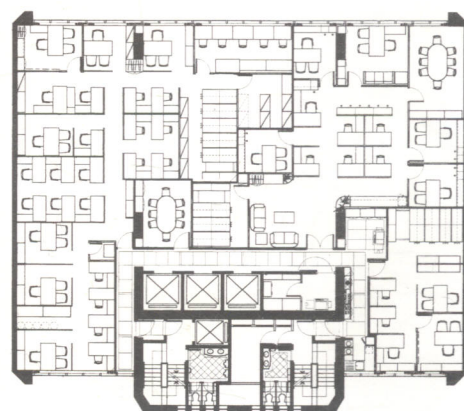
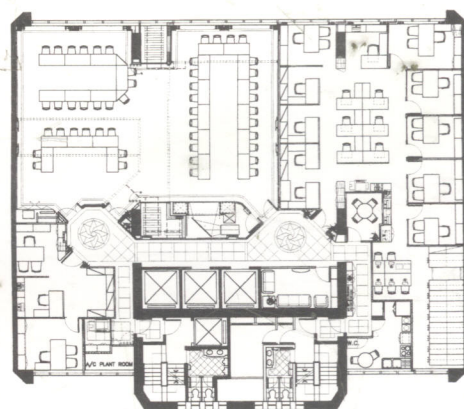
Belgian Bank 华比银行

Fitting-out Main Contractors 装修总承包商：Carmen Interiors (21/F), Contract Interiors (Asia) Ltd. (25/F & 27/F)

Furniture 家具：Lamex Trading Co. Ltd. 美时文仪有限公司

Carpet 地毯：LBM Ltd. 美迅有限公司

Fire Services 消防：Jackson Fire Protection & Engineering Co.



Floor plans of 21/F, 25/F and 27/F, Belgian Bank Tower. 华比大厦 21、25 及 27 楼平面图。

"Pretended" — Easyway International Holdings Ltd . “伪装” — 顺成国际集团

Client 客户：Easyway International Holdings Ltd. 顺成国际集团

Location 地点：Queen's Road, Central, H.K. 香港中环皇后大道中

Area 面积：180 sq. m./ 平方米

Design 设计：R.C. Interior Design Ltd.

Photography 摄影：Docu Man



Cylindrical reception area.

圆柱形的接待空间，为办公室添上个性。



The round shape functionally directs visitors to different areas in the office.
接待处的圆形在功能上引导访客前往办公室各部门。



Having seen the client turn down previous design proposals, the designer understood the client to have unconventional expectations. He suggested an office in a hi-tech, avant-garde style. First impressions are of an office in the forefront of technology but, in reality, this is the Hong Kong office of a finance and investment company with Chinese interests.

Cylinder in Black White & Grey

The reception area was deliberately shaped in a cylindrical form to attract visitor's attention.

设计师参考了多个不被采纳的设计案，揣摩客户所要求的，应并非传统的办公室形象，于是产生出这个高科技和较前卫的设计。办公室令人乍看还以为是专营尖端科技产品的公司，其实它是一间中资金融投资公司的香港办事处。

黑白灰的圆柱体

接待空间设计成圆柱状，从走廊望进来，即成为办公室的标志。圆形的运用发挥了功能和美观两大优点。



Conference room in
metallic silver grey, black
and white.
银灰、黑与白的会议室。



Carpet tiles in two patterns
differentiate the public areas
from the private.
两种不同图案的方格地毯，区
分了公众与私人空间。



A meeting table in director's room.
董事室内的会议桌。

The circular space has the added benefit of providing a shortcut from the reception to the inner parts of the office. The floor plan reveals that the area was divided into two halves by a passage. This enables visitors to have direct access to different departments.

The curved backdrop logo wall was inlaid with three stainless steel trimmings (each of which was longer than twenty feet). The floor was paved with pure black granite and white crystalline stones. The only object with corners was the rectangular receptionist's desk. Sand mirrors wrapped the four sides of the rectangle while a flat light-box was employed as the desk-top. The desk looked outstanding and fulfilled the client's expectations of a space-age object.

Stainless Steel Doors

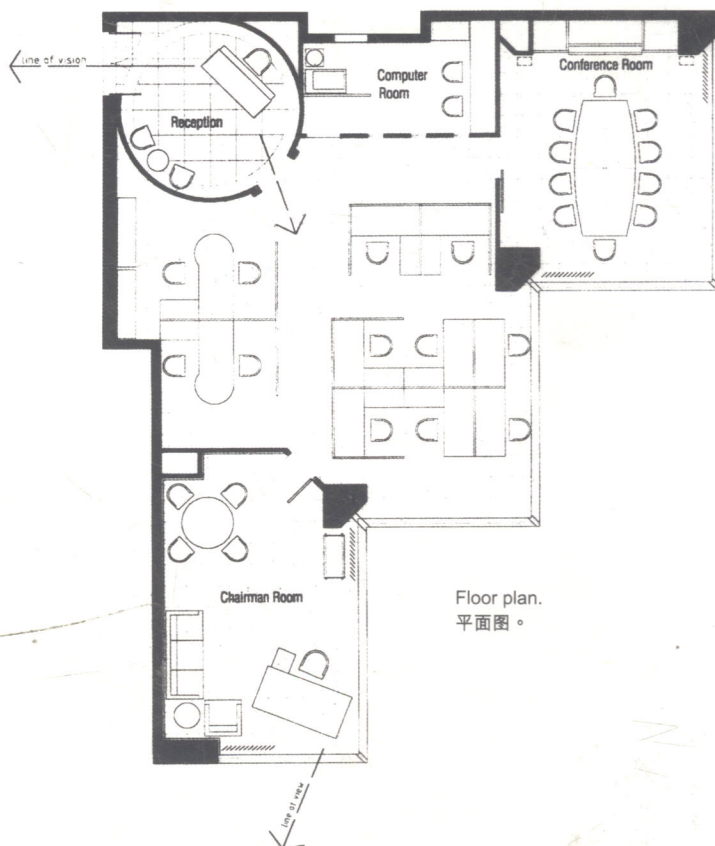
Stainless steel doors are rarely seen in offices but these were used in the conference room and director's room. The former, which was activated by an infrared ray sensor, was reminiscent of sci-fi movies.

功能上，圆形的空间设计提供了一条由接待处至办公室内的捷径。从平面图里看，圆形的空间其实被一入行通道分成两个半圆，访客进入接待处后，只须沿此通道越过柜台即能直达办公室的内部，毋须左转右拐。

美观方面，接待处的弧形背景墙镶有三条6.1米长的不锈钢装饰带，地面铺上圆形纯黑麻石以及由白水晶石砌成的环状图案。在浑圆的空间里，只有接待员柜台是呈方形的，周边以砂镜围拢，台面为一个扁平的灯箱，整个柜台显得十分突出，也符合了客户对营造高科技感的要求。

铜门铁壁

会议室与董事室的门，竟然是用整扇的不锈钢门，相信这出现于一般办公室的几率颇低。会议室那一扇的成本较高，因为它利用红外线感应，全自动操控开关的动作，很有科幻电影的味道。



Floor plan.
平面图。

The Office of Glass — Grand Generale Asset Management Ltd.

玻璃的办公室 — 广通资产管理有限公司

Client 客户: Grand Generale Asset Management Ltd. 广通资产管理有限公司

Location 地点: Central Plaza, Harbour Road, Wan Chai, H.K. 香港湾仔港湾道中环中心

Area 面积: 230 sq. m./ 平方米

Design 设计: Kim Design Co. (Kim Man) 建文设计公司 (文剑芳)

Fitting-out Main Contractor 装修总承包商: Carmen Interiors

The oval-shaped reception area has two separate entrances leading to the conference room and staff area respectively.
呈椭圆形的接待区域, 有两个独立入口, 分别通往会议室及职员区。

